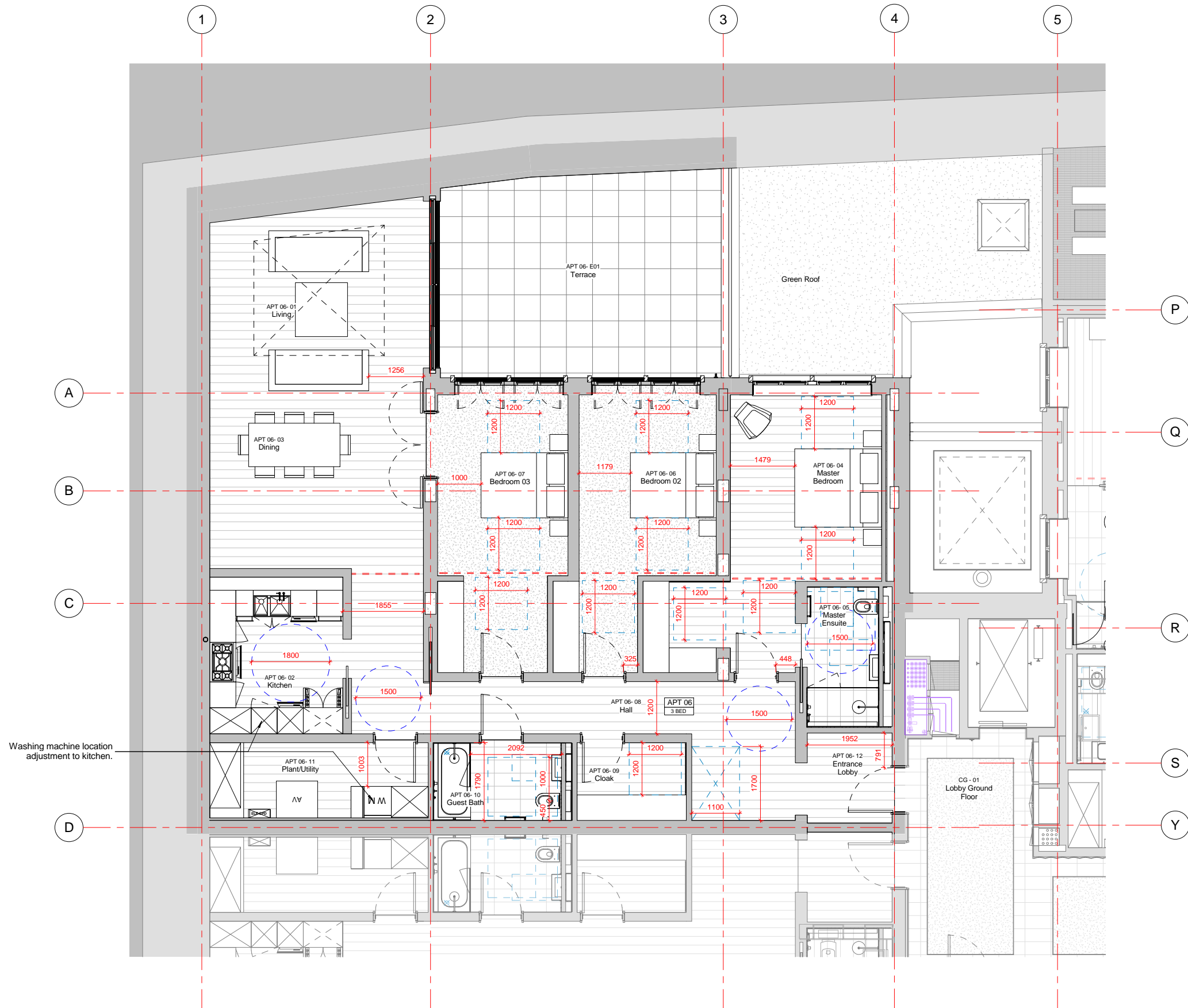


General notes:
 This drawing is copyright of KSR architects. This drawing must be read in conjunction with the Designer's Risk Assessment, specification and all other relevant documentation and drawings. KSR architects accept no liability for any expense, loss or damage of whatsoever nature and however arising from any variation made to this drawing or in the execution of the work to which it relates which has not been referred to them and their approval obtained.
 Do not scale from this drawing or the digital data, only figured dimensions are to be used. For Planning refer to linear scale.
 Check all dimensions on site prior to carrying out any works - advise of any discrepancy
 Notes/Legends

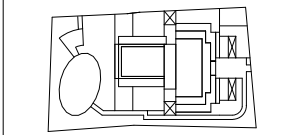


1 Wheelchair Accessible- Apartment 06
 1 : 50

Revised to David Fowler MMA Application comments 13 Mar 18 JR
 Rev Description Date Chkd

© KSR architects
 Stamp

MMA Application



KSRARCHITECTS
 KSR Architects LLP
 14 Grosvenor Street
 London W1T 0ND
 info@ksrarchitects.com
 t +44 (0)20 7682 5000
 www.ksrarchitects.com

Project:
 29 NEW END

Title:
 Wheelchair Housing Apartment
 06 & Apartment 05 similar

Date: Mar 2018 Drawn By: KSR Checked: JR
 Scale: 1:50 @ A1 1:100 @ A3 Status: Planning

Project Ref: NEN Drawing No: NEN - PL-500 Revision: -