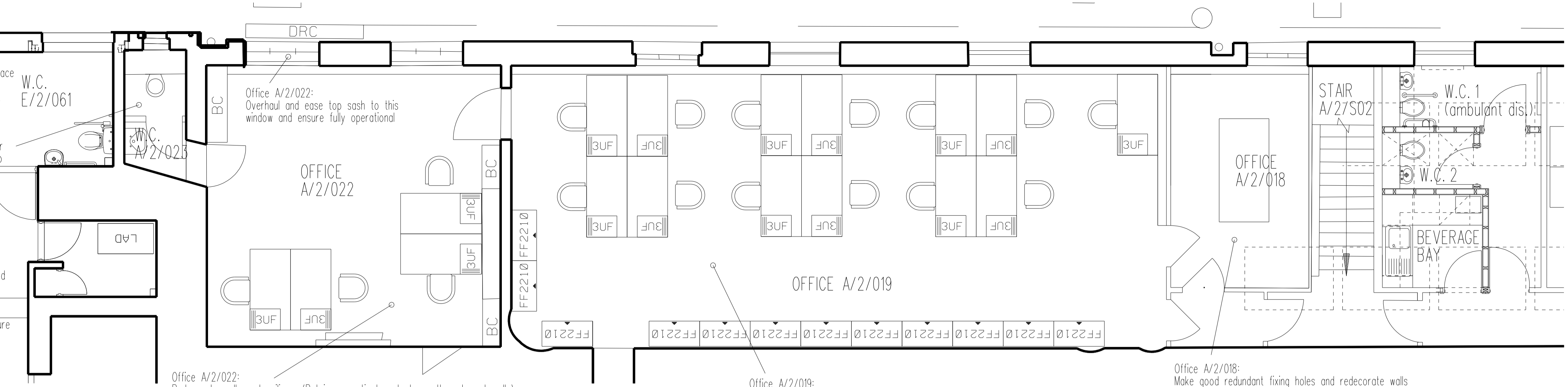


W.C. A/2/023:
Clean down toilet pan and replace seat and cover to match extg. Replace whb and taps and under counter water heater.
Take off existing glazed wall tiles and replace with new tiling (2 courses x 2 courses). Redecorate walls and ceilings inc. bulkhead. Redecorate cistern enclosure. Redecorate window and replace pull cord and provide pulley. Replace vinyl flooring with new safety floor with coved skirting and new transition strip to office flooring.

Generally where heating pipework and electrical conduits have been previously painted in with walls, and ceilings, the redecoration is to include these elements too.
Electrical and mechanical items and fittings such as teleflex gear not previously painted are to be protected and cleaned on completion.

Check and clean all window grilles and ensure that they run free and true on completion (work limited to lubrication only)



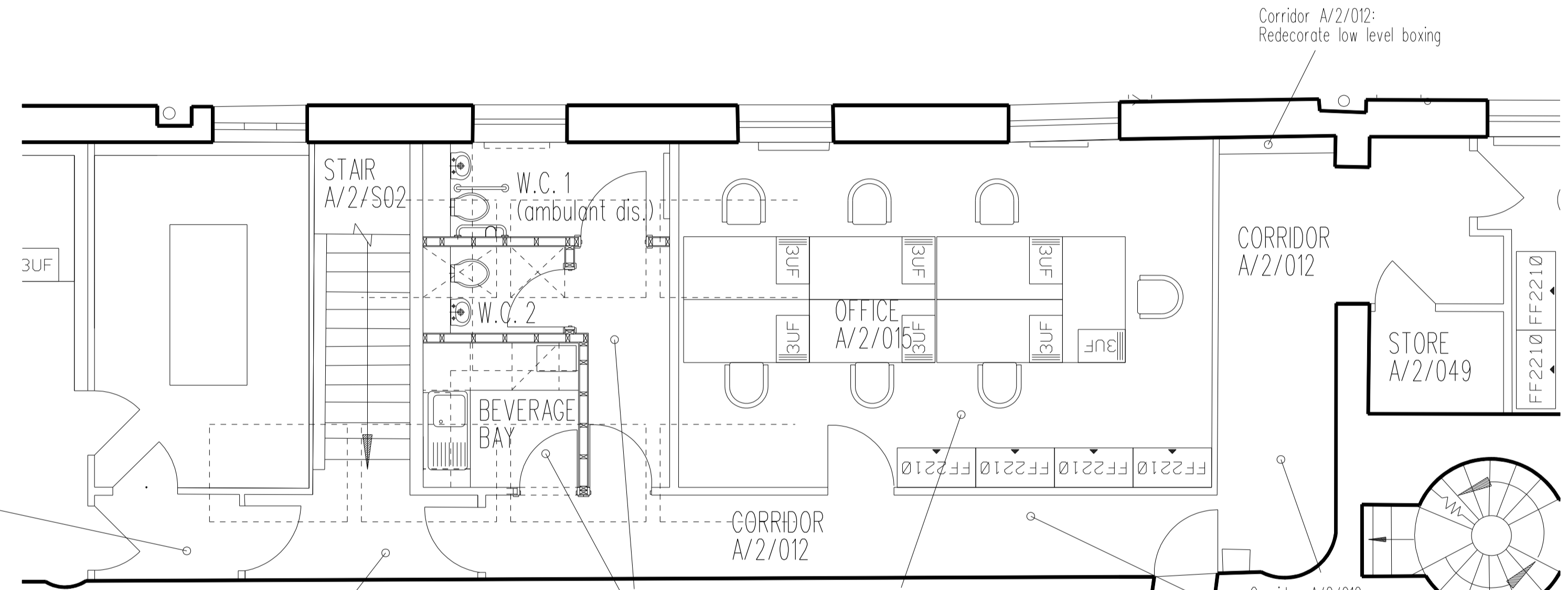
PLAN AT NORTH END

Office A/2/022:
Redecorate walls and ceilings. (Retain magnetic boards to north and west walls). Redecorate panelled door leaf, frame and architrave to Office A/2/019. Redecorate flush door, frame and architrave to w.c. A/2/021. Redecorate deep moulded skirtings. Protect bookcases, fireplace and chandelier and clean down on completion. Retain carpet floor tiles.

Office A/2/019:
Redecorate walls and ceilings. Redecorate door frames, architraves and deep moulded skirtings. Retain carpet floor tiles but allow for localised replacement where damaged or missing (see schedule of works for quantities).

Office A/2/018:
Make good redundant fixing holes and redecorate walls and ceilings. Redecorate (219 x 25mm) skirtings and door frames and architraves (69 x 129mm) to corridor and Office A/2/019. Retain carpet floor tiles. Re-fix pull handle to sash.

Lobby adjacent stairs A/2/S02:
Redecorate walls and ceiling in lobby area. Redecorate deep moulded skirtings, door frames and architraves. Retain carpet tiles in lobby.



PLAN AT CENTRAL STAIR AREA

Top landing to stairs A/2/S02:
Redecorate walls only in staircase area (make good to damaged areas to walls at top of stairs). Redecorate door frames and architraves. Replace carpet to top of stairs with new carpet. Tiles and replace top stair nosing to match existing. Replace plain vinyl skirtings.

Beverage Bay and w.c.s:
Remove extg cupboard units and fittings and form new Beverage Bay and w.c. areas as detailed on drawing ADI/1 including new fire door and frame (retain extg fire door for re-use).

Office A/2/015:
Redecorate walls and ceilings (rooflight aprons excluded). Redecorate plain timber skirtings, door frame and architrave. Local replacement of carpet tiles where soiled (see schedule of works for quantities).

Corridor A/2/012:
Redecorate walls and ceilings. Replace vinyl floor covering and non-coved vinyl skirting. Redecorate door frames and architraves. Redecorate flush door to Store A/2/049. Make good to damaged clear finish to door leaf to office A/2/015.

Generally where heating pipework and electrical conduits have been previously painted in with walls, and ceilings, the redecoration is to include these elements too. Electrical and mechanical items and fittings not previously painted are to be protected and cleaned on completion.

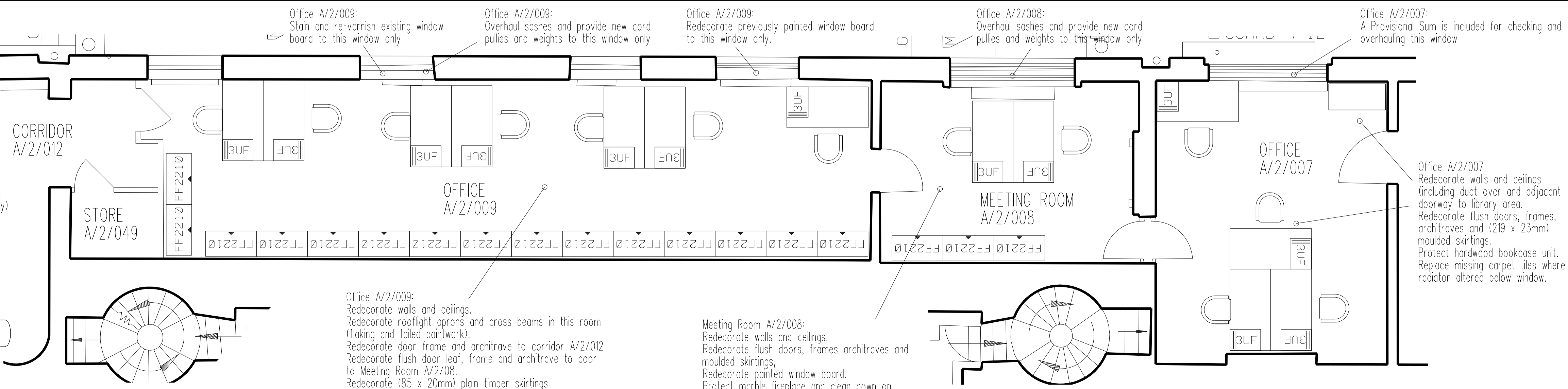
Check and clean all window grilles and ensure that they run free and true on completion (work limited to lubrication only)

Store A/2/049:
No decorations or any other works required internally to the store. (door leaf, frames and architrave on corridor side to be redecorated)

PLAN AT SOUTH END

Generally where heating pipework and electrical conduits have been previously painted in with walls, and ceilings, the redecoration is to include these elements too. Electrical and mechanical items and fittings not previously painted are to be protected and cleaned on completion.

Check and clean all window grilles and ensure that they run free and true on completion (work limited to lubrication only)



Office A/2/009:
Redecorate walls and ceilings. Redecorate rooflight aprons and cross beams in this room (flaking and failed paintwork). Redecorate door frame and architrave to corridor A/2/012. Redecorate flush door leaf, frame and architrave to door to Meeting Room A/2/008. Redecorate (85 x 20mm) plain timber skirtings. Local replacement of carpet tiles where soiled or missing (see schedule of works for quantities).

Meeting Room A/2/008:
Redecorate walls and ceilings. Redecorate flush doors, frames architraves and moulded skirtings. Redecorate painted window board. Protect marble fireplace and clean down on completion.

Office A/2/007:
Redecorate walls and ceilings (including duct over and adjacent doorway to library area). Redecorate flush doors, frames, architraves and (219 x 23mm) moulded skirtings. Protect hardwood bookcase unit. Replace missing carpet tiles where radiator altered below window.

Office A/2/009:
Stain and re-varnish existing window board to this window only

Office A/2/009:
Overhaul sashes and provide new cord pulleys and weights to this window only

Office A/2/009:
Redecorate previously painted window board to this window only.

Office A/2/008:
Overhaul sashes and provide new cord pulleys and weights to this window only

Office A/2/007:
A Provisional Sum is included for checking and overhauling this window

NOTES
THE CONTRACTOR AND HIS SUB-CONTRACTORS ARE TO VERIFY ALL DIMENSIONS ON SITE BEFORE MAKING SHOP DRAWINGS OR COMMENCING MANUFACTURE

FOR TENDER

B	Desk at south end A/2/019 omitted as Client request 27.02.18. window repairs noted in A/2/022, A/2/009, A/2/008 and A/2/007. Drawing issue annotated FOR TENDER	01.03.18
A	Deskings shown to south end office as initial briefing pack	20.02.18

AMENDMENTS

THE BRITISH MUSEUM
SAP WORKS 2018

PANIZZISUITE
PROPOSED PLAN AT LEVEL 2

scale 1:50 @ A1 date FEB 2018

job no. 17-209

drawing no. AB 1/3

client THE TRUSTEES OF THE BRITISH MUSEUM

FRANK TIMOTHY ASSOCIATES LIMITED
Chartered Architectural Technologist

Oakfields, 18 Piper Road, Yate
South Gloucestershire BS37 5SY
Telephone 01454 880395 Fax 01454 880396