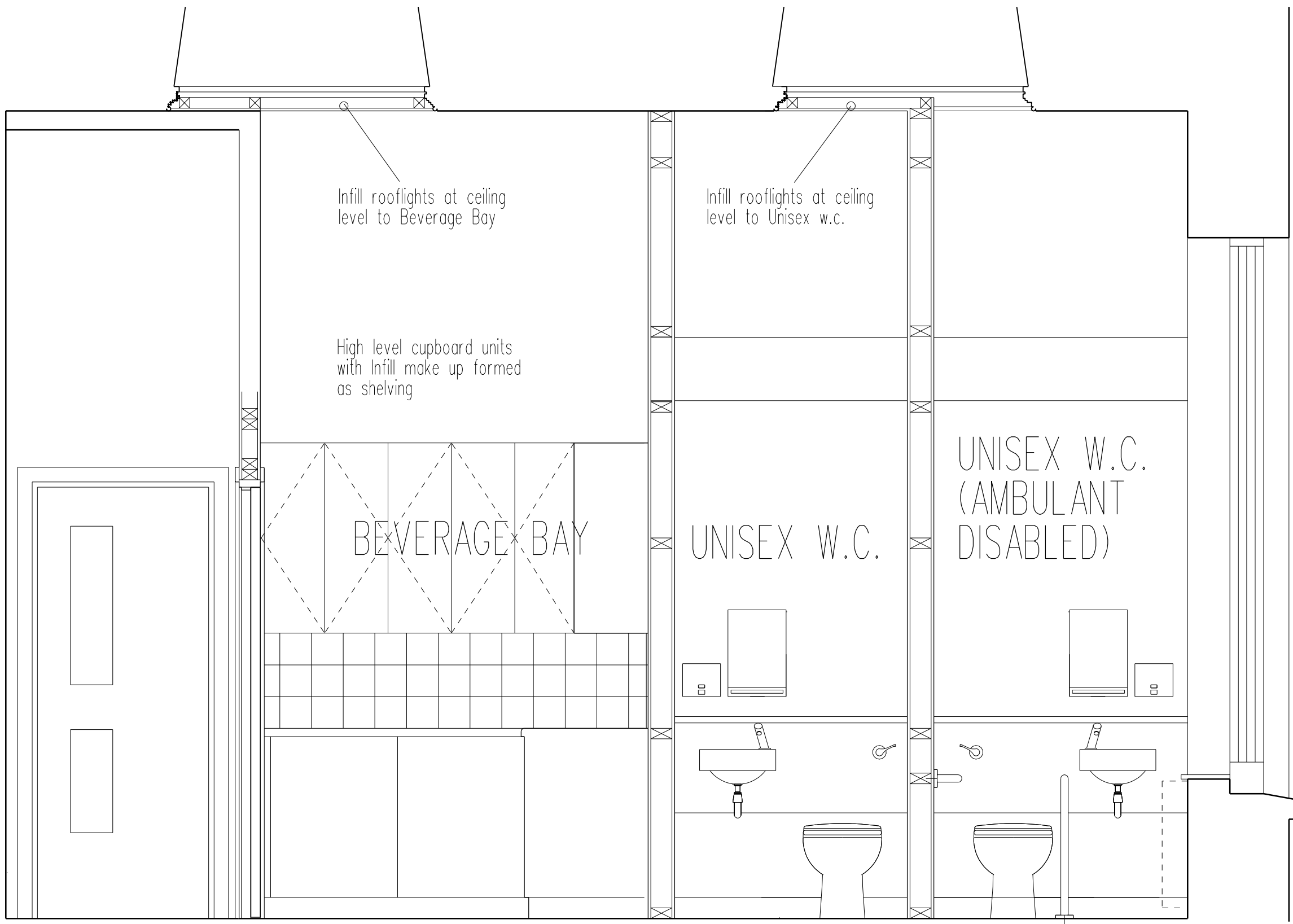
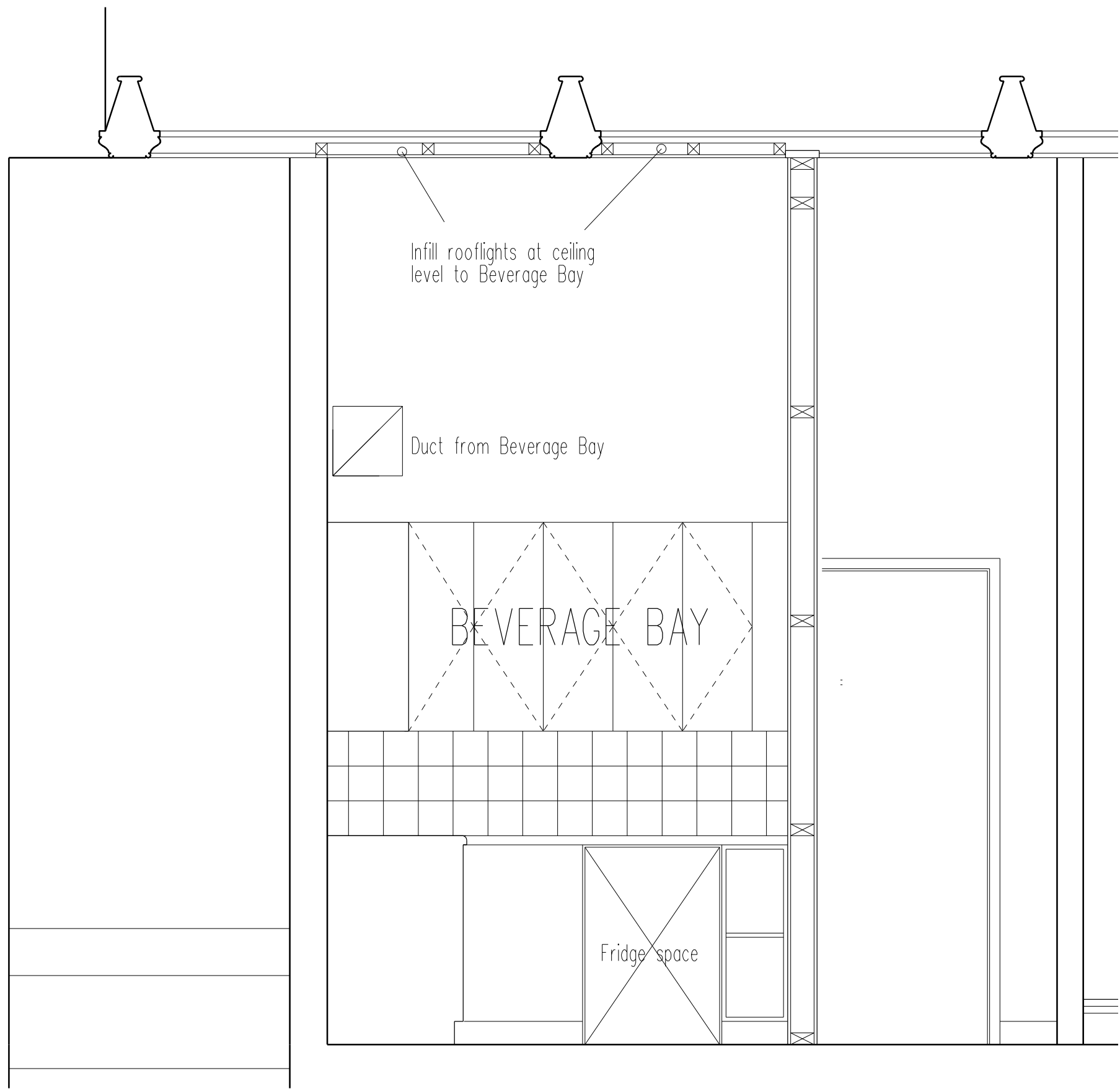


- Reposition radiator and make good to walling for decoration.
- End cubicle to be ambulant disabled with wall and floor mounted grab rails and Armitage Shanks Doc M Ambulant Care w.c. Pack but with special floor mounted grab rail to one side as shown.
- Line of rooflight opening over is shown as broken line
- New stud partitioning taken full height and formed from 100 x 50mm timber studs at 400mm centres, lined each side with Glasroc F Multiboard with skim coat
- New painted flush door to Ambulant Disabled cubicle
2040 x 826 x 44mm leaf with 126 x 32mm lining and 44 x 13mm stop.
69 x 19mm painted architraves with pencil rounded edges.
Door to be undercut for transfer air
- New painted flush doors to non-ambulant cubicle
2040 x 726 x 44mm leaf with 126 x 32mm lining and 44 x 13mm stop.
69 x 19mm painted architraves with pencil rounded edges.
Door to be undercut for transfer air
- Vinyl safety flooring to w.c.s and Beverage Bay areas all coved and welded skirtings
- 600mm deep worktop to kitchen units, space for refrigerator on east side wall, all with high level cupboard units. Teas point and hot and cold taps to stainless steel sink unit
- Carefully remove existing oak faced door and frame from kitchen and set aside and re-use to the same position after adapting partition to suit new door opening to Beverage Bay. Provide 500 x 150mm intumescent transfer grille to door leaf. Provide new 69 x 19mm painted softwood architraves to corridor side and simple plaster stop detail to room side.
- New oak faced flush door to Beverage Bay with vision panel
2040 x 726 x 44mm leaf with 126 x 32mm painted lining and 44 x 13mm stop with smoke and fire seals all to be FD30S. Intumescent transfer grille to floor leaf 150 x 500mm nominal. 69 x 19mm painted architraves with pencil rounded edges all to match existing

- Fire rated partition to corridor to be maintained. Make good where door openings formed and line seal with intumescent around all new and re-used door frames and studs
- Fire rated FD30S fire door to Beverage Bay with vision panels to match existing with fire resistant glazing and closer
- 3 courses 150 x 150mm glazed tiling over worktop



SECTION LOOKING NORTH



SECTION LOOKING EAST

NOTES

THE CONTRACTOR AND HIS SUB-CONTRACTORS ARE TO VERIFY ALL DIMENSIONS ON SITE BEFORE MAKING SHOP DRAWINGS OR COMMENCING MANUFACTURE

NOTES:

window head is approx 3.1m above floor level

Beam soffits are approx 3.82m above floor level

FOR TENDER

B	Drawing issue annotated FOR TENDER	01.03.18
A	Rooflight closed to Beverage Bay in addition to Unisex w.c. Vent duct increased in size. Kitchen units and sink rationalised. Intumescent grilles noted to corridor doors (w.c. doors to be undercut).	26.02.18

AMENDMENTS

THE BRITISH MUSEUM
SAP WORKS 2018

PANIZZISUITE
DETAILED ARRANGEMENT
OF W.C.S / BEVERAGE BAY

scale 1: 20 @ A1 date FEB 2018

job no.
17-209

drawing no.
AD1/1

A B

client

THE TRUSTEES OF
THE BRITISH MUSEUM

FRANK TIMOTHY ASSOCIATES LIMITED
Chartered Architectural Technologist

Oakfields, 18 Piper Road, Yate
South Gloucestershire BS37 5SY

Telephone 01454 880395

Fax 01454 880396