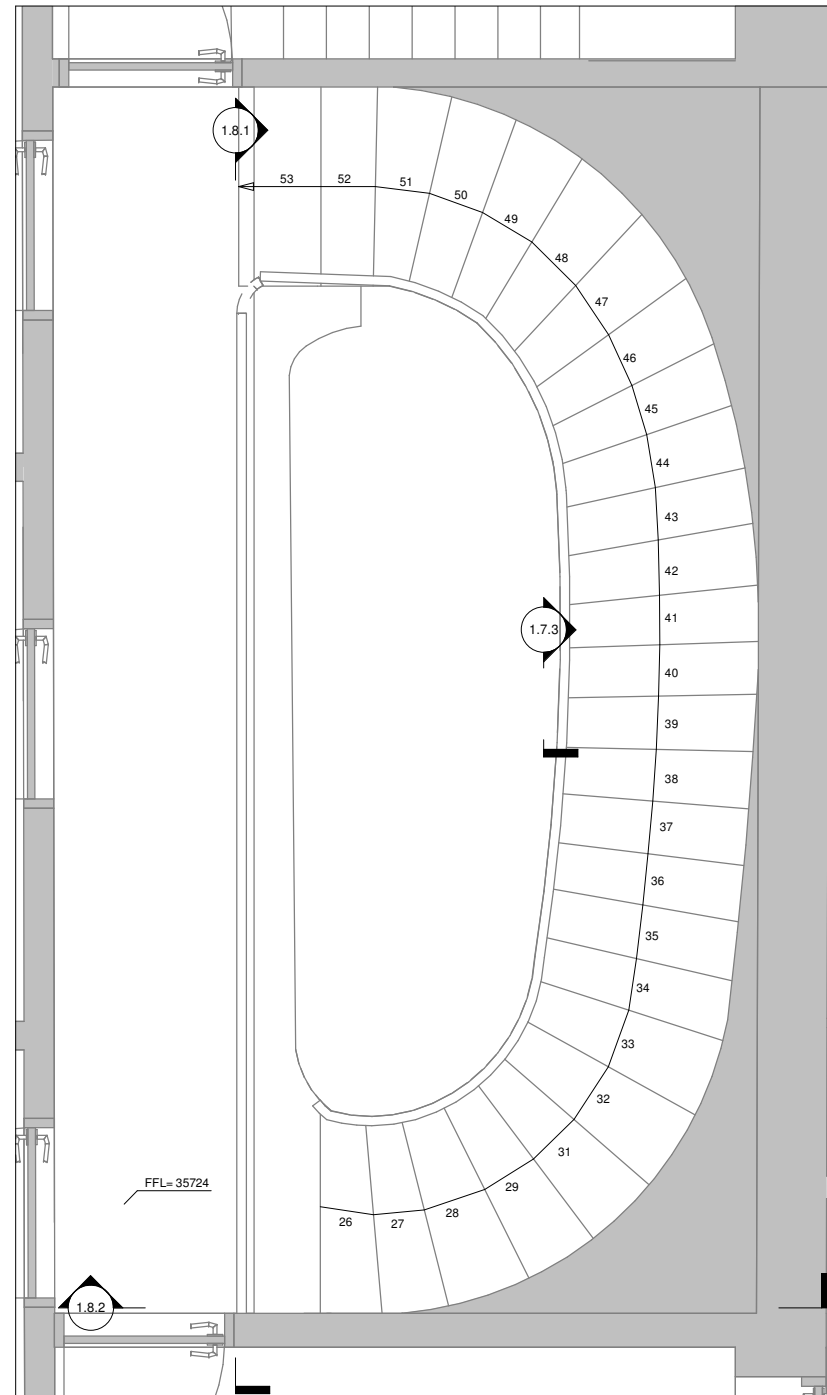


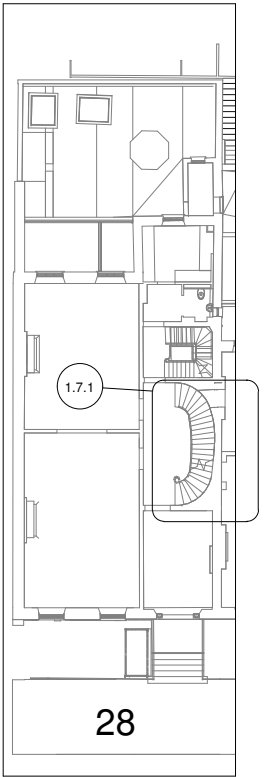
1 Ground to First Floor Staircase Plan  
1 : 20



2 First to Second Floor Staircase Plan  
1 : 20

**Stone Staircase Repair Notes**

- SS.1 Generally provide temporary support for stair flights, and not through or via flights below.
- SS.2 Rake out or saw cut and remove existing mortar from all stone joints, and replace with dry pack mortar, using steel tools to ram into full joint thickness.
- SS.3 Allow ten days for mortar to cure and then carefully remove temporary supports.
- SS.4 Repair cracks in stone skirtings, stone treads, plinths etc., with epoxy resin repair mortar using injection through fine tubes where necessary.
- SS.5 Stonework adjacent to joints to be protected using latex masking compounds or other similar techniques.

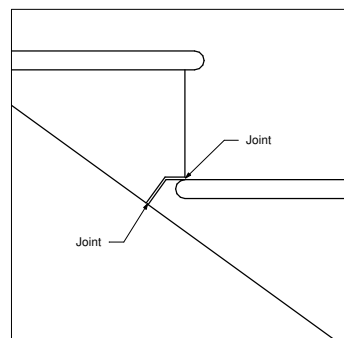


0 Site Plan  
1 : 200

**Notes**  
 G.1 This drawing is to be read in conjunction with all relevant Architects and Engineers drawings and specifications.  
 G.2 Do not scale from a paper or digital version of this drawing. Use written or stated dimension only.  
 G.3 For general notes refer to drawing 17/059/1.1  
 This drawing is the copyright of Barton Engineers & may not be copied, altered or reproduced in any way or passed to a third party without their written Authority  
 Status

**Tender**  
 Not for Construction

Issues / Revisions  
 P1 Issued for Comments 120218 WK  
 T1 Issued for Tender 210218 WK



3 Detail 1.7.3  
1 : 5

**Barton Engineers**

Studio 121, Westbourne Studios  
 242 Acklam Road, London W10 5JJ  
 telephone +44(0)20 7631 0348  
 mail@bartonengineers.co.uk  
 http://www.bartonengineers.co.uk

Project  
**28 Russell Square**

Title  
**Main Staircase Plans**

Scales  
 1:20@A1

Designed by  
**Bob Barton**

Drawn by  
**Catherine Hide**

Drawing number  
**17/059/1.7**

Checked by  
**Bob Barton**

Rev.  
**T1**