

General Notes

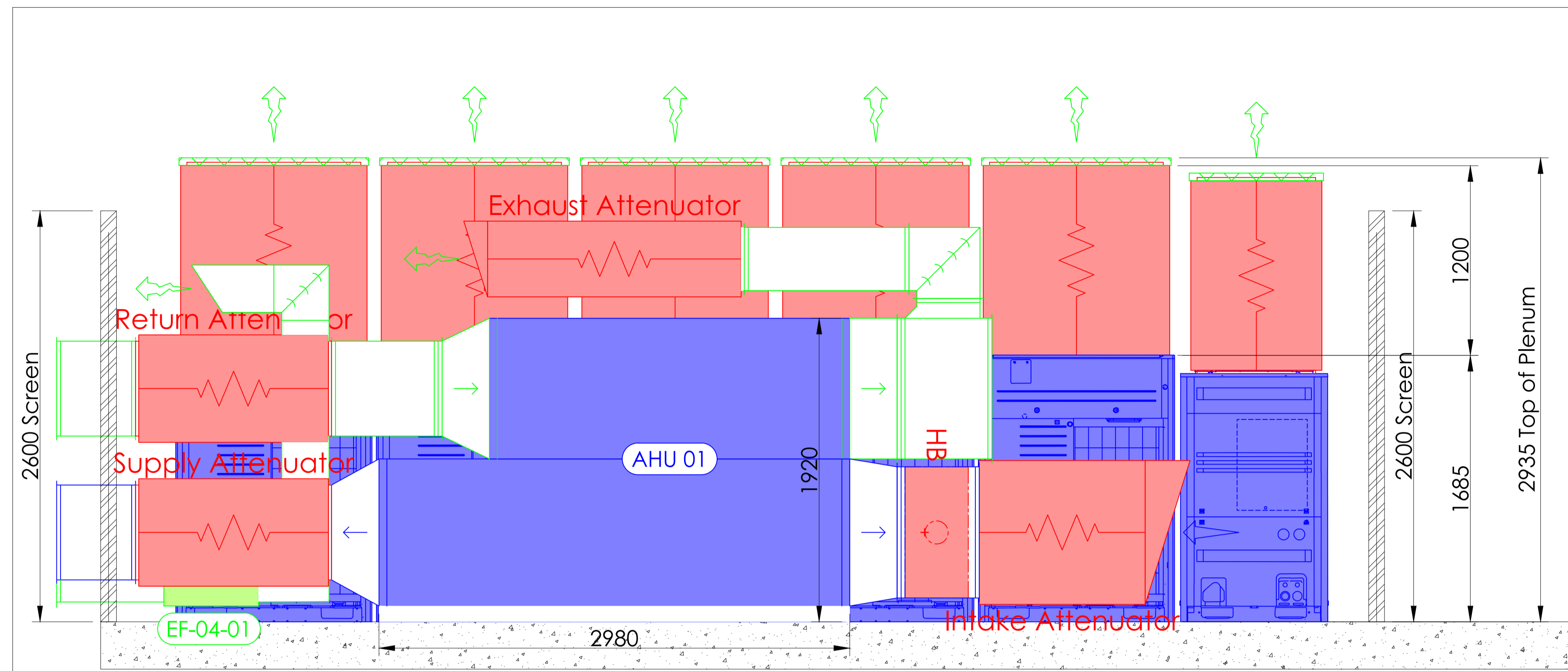
This drawing must not be scaled. All dimensions to be checked.

This drawing is to be read in conjunction with all relevant structural engineer's drawing and details, the specification for the works, the relevant architects drawings and any other specialists drawings.

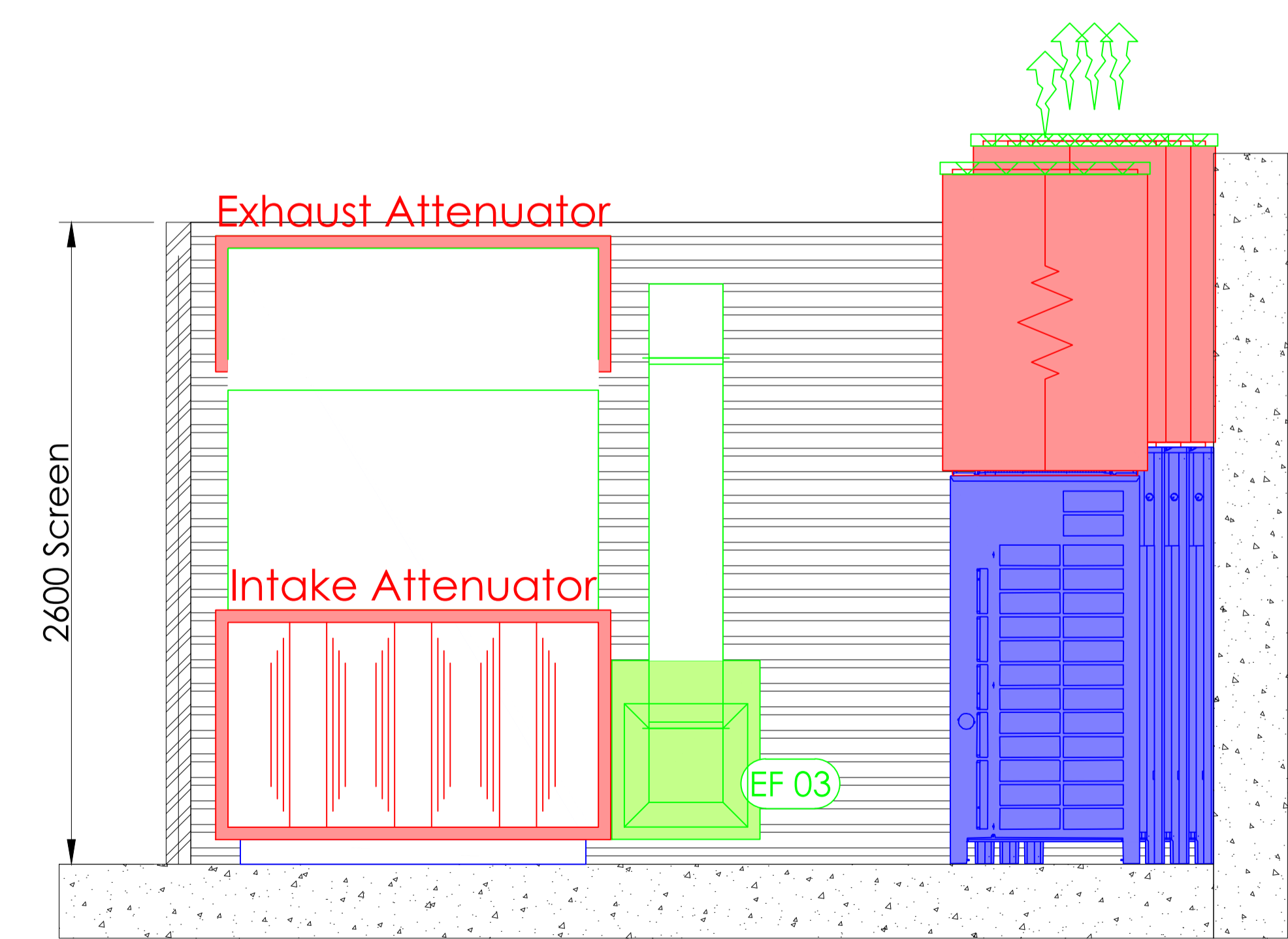
Note that 'As Installed Record Drawings' should be used for co-ordination of MEP Systems. This drawing is for Design intent only.

MECHANICAL LEGEND	
	Existing Units
	New Units
	Relocated Units
	Existing Services
	New CHW Services
	New LTHW Services
	New Refrigerant Services
	New Condensate Services
	AC Controller
	Temperature Sensor
	New Supply Air / Fresh Air
	New Return Air / Extract
	Relocated Supply Air / Fresh Air
	Relocated Return Air / Extract
	Extract Fan
	Volume Control Damper
	Motorized Control Damper
	Fire Damper
	Heater Battery
	Attenuator / Silencer
	CO2 Sensor
	Access Panel
	Cut Back Linear Diffuser

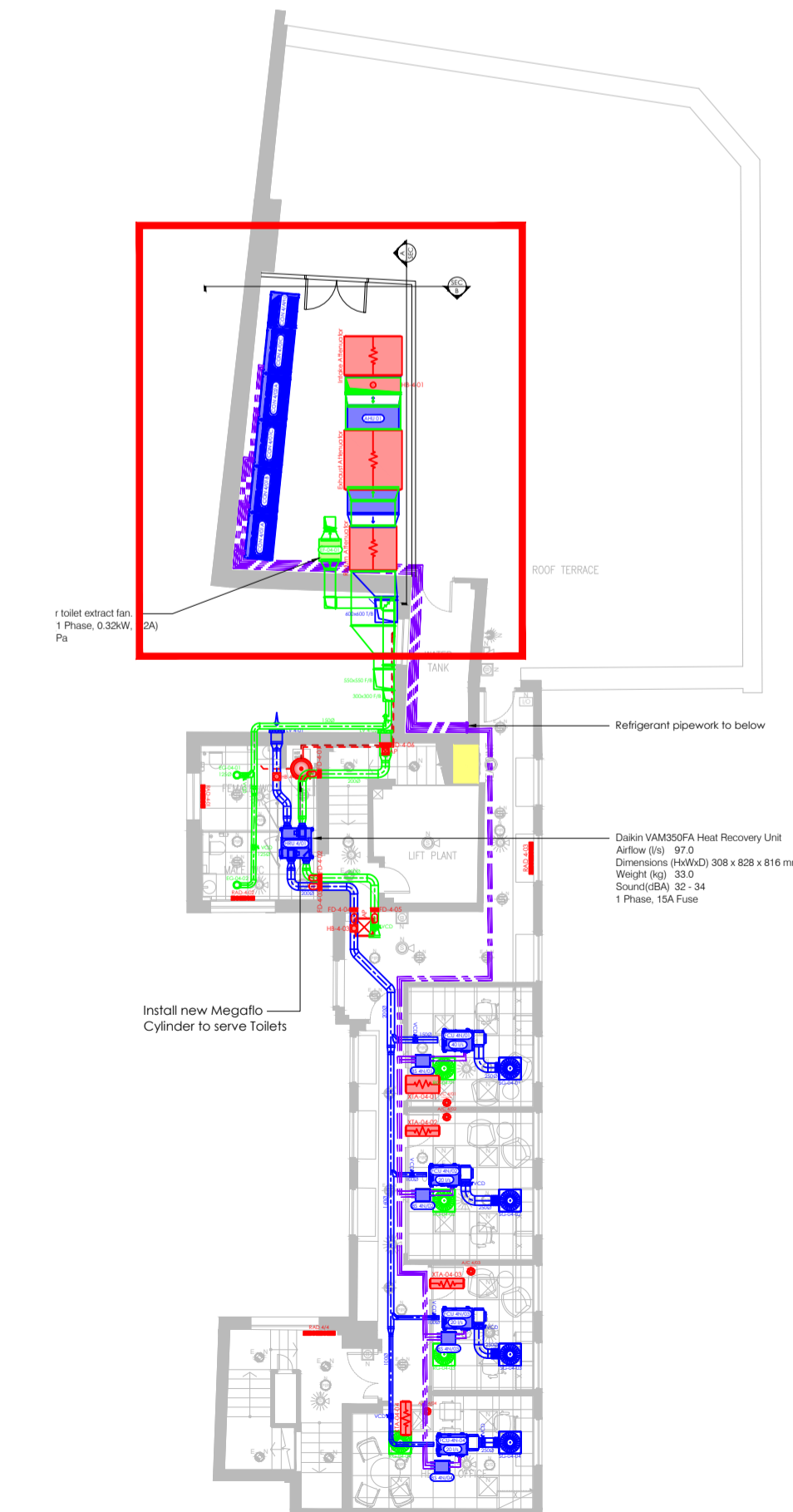
Return Air Path Opening:
The following opening sizes shall be made in the full height partitioning within the ceiling space in the following rooms:
Quiet Room / Office - 200x100
Meeting Room - 300x200



Section A



Section B



A	Extract Fan	F.C.	08-03-18
	First Issue	F.C.	03-03-18
Rev	Description	By	Date

Conditioned Environment
Specialists in Mechanical Services

Conditioned Environment
(Mechanical Services) Ltd
245 Acton Lane, Park Royal
London NW10 7NR
T 020 8453 1010
F 020 8965 8469
E enquiries@c-env.co.uk
www.c-env.co.uk

Client
Maris

Project
Fordham University
150-152 Clerkenwell Road
London - EC1R 5EQ

Drawing Title
4th Floor Plant Enclosure Sections

Drawing Status
CONSTRUCTION

Designed By	Drawn By	Checked By
J.G.	F.C.	K.S.

1st Issue Date	Scale @ A1
05-03-18	1:20

Project	Serv.	Floor	Ref	Sheet	Rev
4424	M	04	MEC	02	A