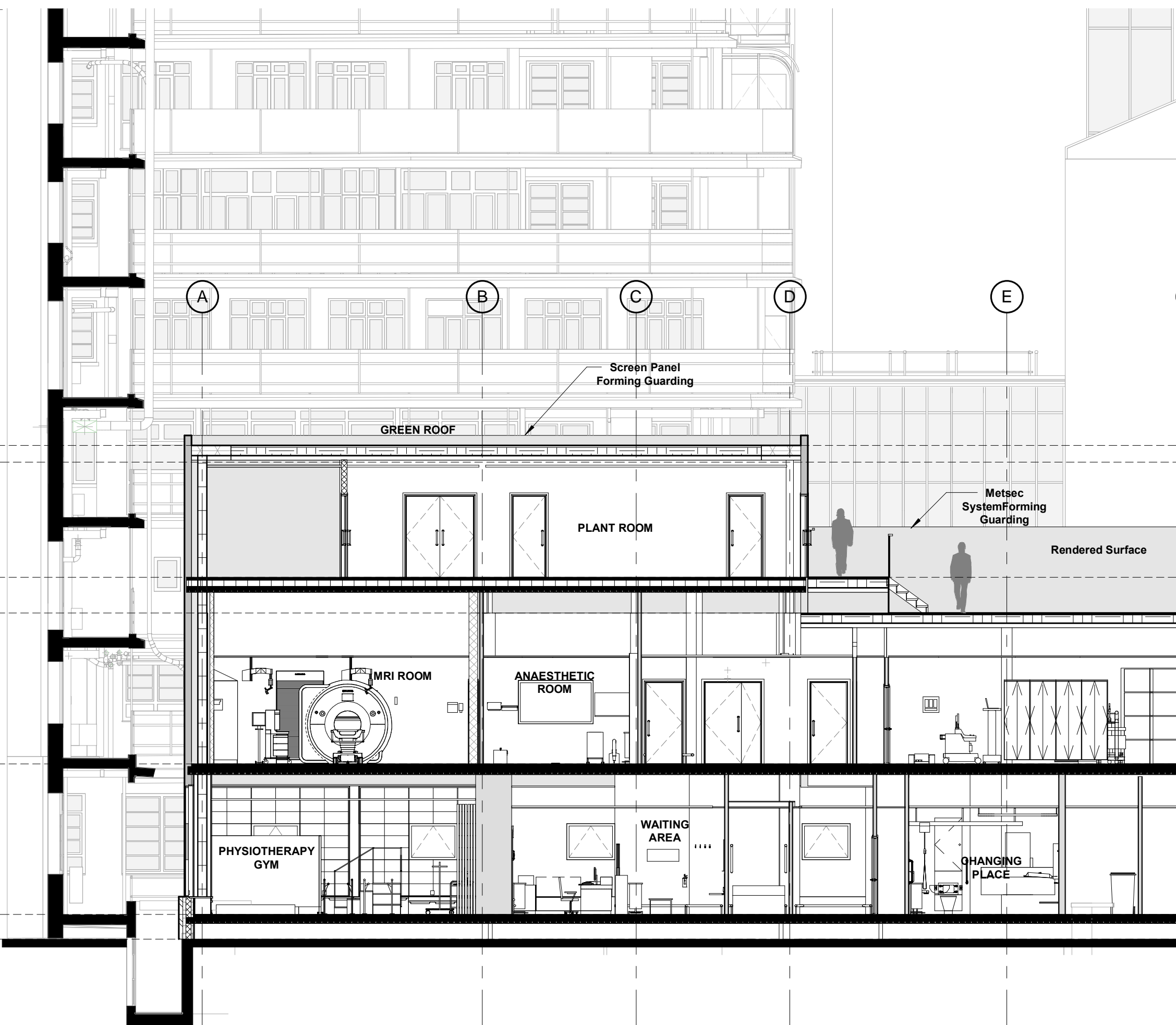
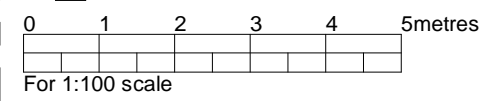


THIS DRAWING IS PROTECTED BY COPYRIGHT - FIGURED DIMENSIONS ONLY TO BE TAKEN FROM THIS DRAWING. DIMENSIONS TO BE CHECKED ON SITE AND ANY DISCREPANCIES REPORTED TO THE ARCHITECT IMMEDIATELY.
 PURPOSE OF ISSUE - A = FOR COMMENT/ CO-ORDINATION B = FOR INFORMATION C = FOR APPROVAL D = FOR TENDER E = FOR CONSTRUCTION F = FINAL DESIGN DRAWING

Rev	Rev Date	Revision Description	Drawn/Checked	Purpose of Issue
A	07/04/2017	General Update	VS/MH	A
B	13/04/2017	General Update	VS/MH	A
C	28/04/2017	Pricing Issue	VS/MH	P
D	12/05/2017	For Planning	VS/MH	C
E	25/05/2017	For Planning	VS/MH	P
F	06/06/2017	For Planning	VS/MH	P
G	01/12/2017	For comments	FY/MH	A



- Level Roof 35485.00 mm
- VCB Floor Level 05 35060.00 mm
- Level 04A 32135.00 mm
- Level 04 31235.00 mm
- Level 03 27410.00 mm
- Level 02 23585.00 mm
- Level Courtyard 22960.00 mm



FOR APPROVAL

For Section Lines See Drawing 16021(01)029 - Proposed Level 02 (Ground Floor) Plan showing surrounding clinical uses

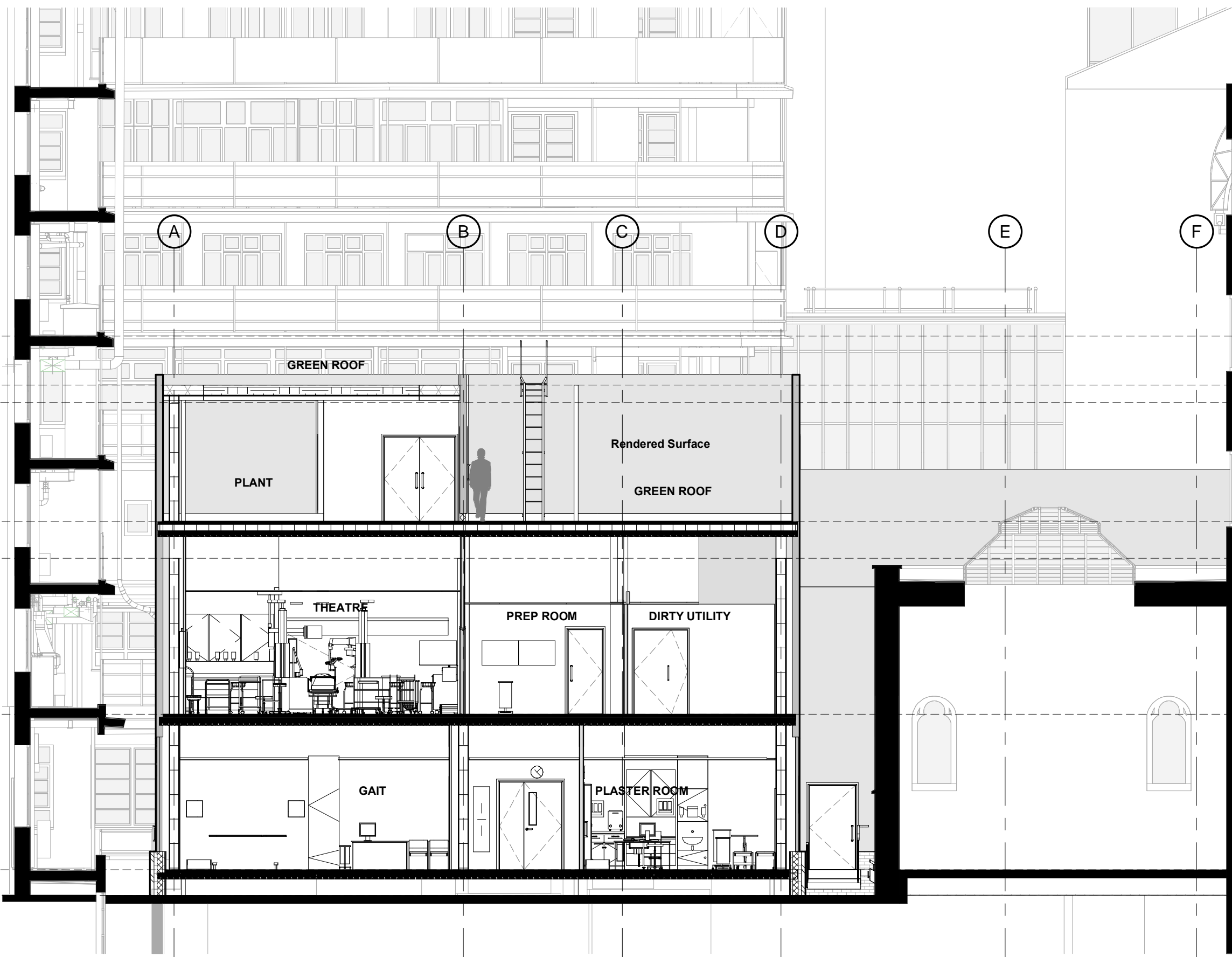
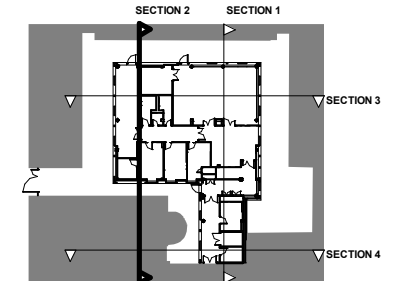
Proposed Section 1	16021	(03)006	G
	JOB NUMBER	DRAWING NUMBER	REV
Great Ormond Street Hospital for Children - NHS Foundation Trust	27/03/2017	As indicated	
	DATE	SCALE @ A3	

Ansell & Bailey LLP Chartered Architects, 24-32 Stephenson Way, London, NW1 2HD, 020 73870141, architects@ansellandbailey.com

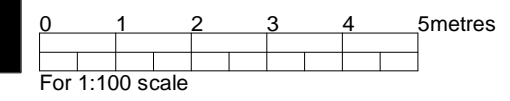
ANSELL + BAILEY

THIS DRAWING IS PROTECTED BY COPYRIGHT - FIGURED DIMENSIONS ONLY TO BE TAKEN FROM THIS DRAWING. DIMENSIONS TO BE CHECKED ON SITE AND ANY DISCREPANCIES REPORTED TO THE ARCHITECT IMMEDIATELY.
 PURPOSE OF ISSUE - A = FOR COMMENT/CO-ORDINATION B = FOR INFORMATION C = FOR APPROVAL D = FOR TENDER E = FOR CONSTRUCTION F = FINAL DESIGN DRAWING

Rev	Rev Date	Revision Description	Drawn/Checked	Purpose of Issue
A	07/04/2017	General Update	VS/MH	A
B	13/04/2017	General Update	VS/MH	A
C	28/04/2017	Pricing Issue	VS/MH	P
D	12/05/2017	For Planning	VS/MH	C
E	25/05/2017	For Planning	VS/MH	P
F	06/06/2017	For Planning	VS/MH	P
G	01/12/2017	For comments	FY/MH	A



- Top Parapet 36685.00 mm
- Level Roof 35485.00 mm
- VCB Floor Level 05 35060.00 mm
- Level 04A 32135.00 mm
- Level 04 31235.00 mm
- Level 03 27410.00 mm
- Level 02 23585.00 mm
- Level Courtyard 22960.00 mm



FOR APPROVAL

For Section Lines See Drawing 16021(01)029 - Proposed Level 02 (Ground Floor) Plan showing surrounding clinical uses

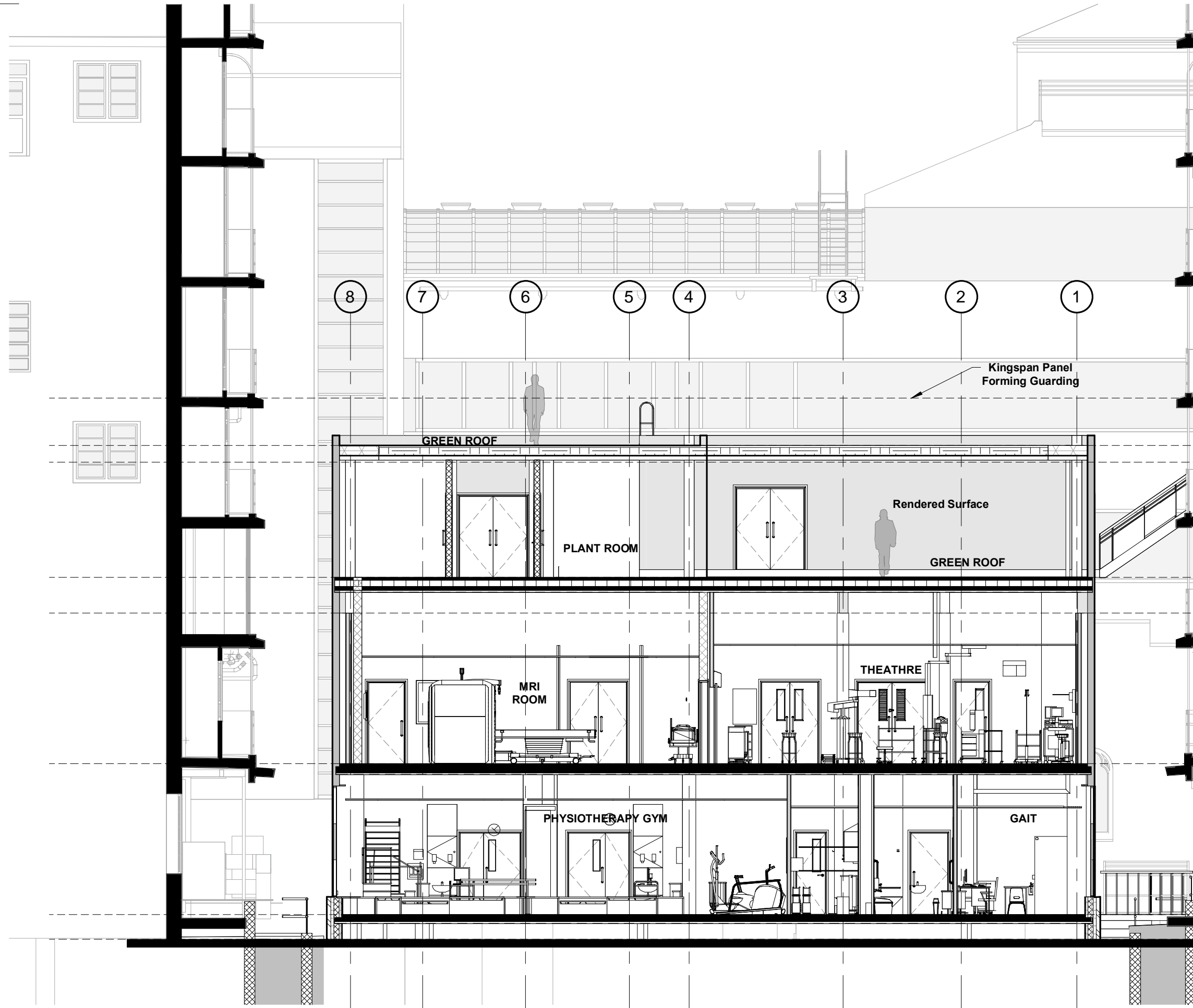
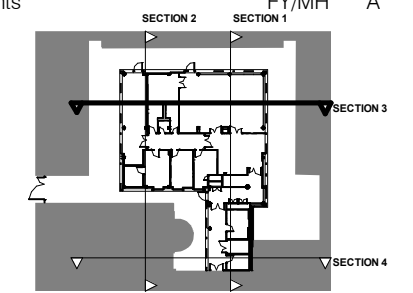
Proposed Section 2	16021	(03)007	G
	JOB NUMBER	DRAWING NUMBER	REV
Great Ormond Street Hospital for Children - NHS Foundation Trust	27/03/2017	As indicated	
	DATE	SCALE @ A3	

Ansell & Bailey LLP Chartered Architects, 24-32 Stephenson Way, London, NW1 2HD, 020 73870141, architects@ansellandbailey.com

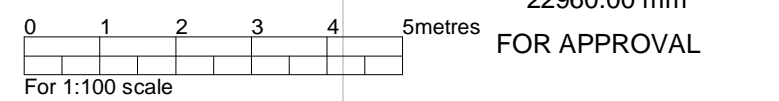
ANSELL + BAILEY

THIS DRAWING IS PROTECTED BY COPYRIGHT - FIGURED DIMENSIONS ONLY TO BE TAKEN FROM THIS DRAWING. DIMENSIONS TO BE CHECKED ON SITE AND ANY DISCREPANCIES REPORTED TO THE ARCHITECT IMMEDIATELY.
 PURPOSE OF ISSUE - A = FOR COMMENT/CO-ORDINATION B = FOR INFORMATION C = FOR APPROVAL D = FOR TENDER E = FOR CONSTRUCTION F = FINAL DESIGN DRAWING

Rev	Rev Date	Revision Description	Drawn/Checked	Purpose of Issue
A	07/04/2017	General Update	VS/MH	A
B	13/04/2017	General Update	VS/MH	A
C	28/04/2017	Pricing Issue	VS/MH	P
D	12/05/2017	For Planning	VS/MH	C
E	25/05/2017	For Planning	VS/MH	P
F	06/06/2017	For Planning	VS/MH	P
G	01/12/2017	For comments	FY/MH	A



- Top Parapet 36685.00 mm
- Level Roof 35485.00 mm
- VCB Floor Level 05 35060.00 mm
- Level 04A 32135.00 mm
- Level 04 31235.00 mm
- Level 03 27410.00 mm
- Level 02 23585.00 mm
- Level Courtyard 22960.00 mm



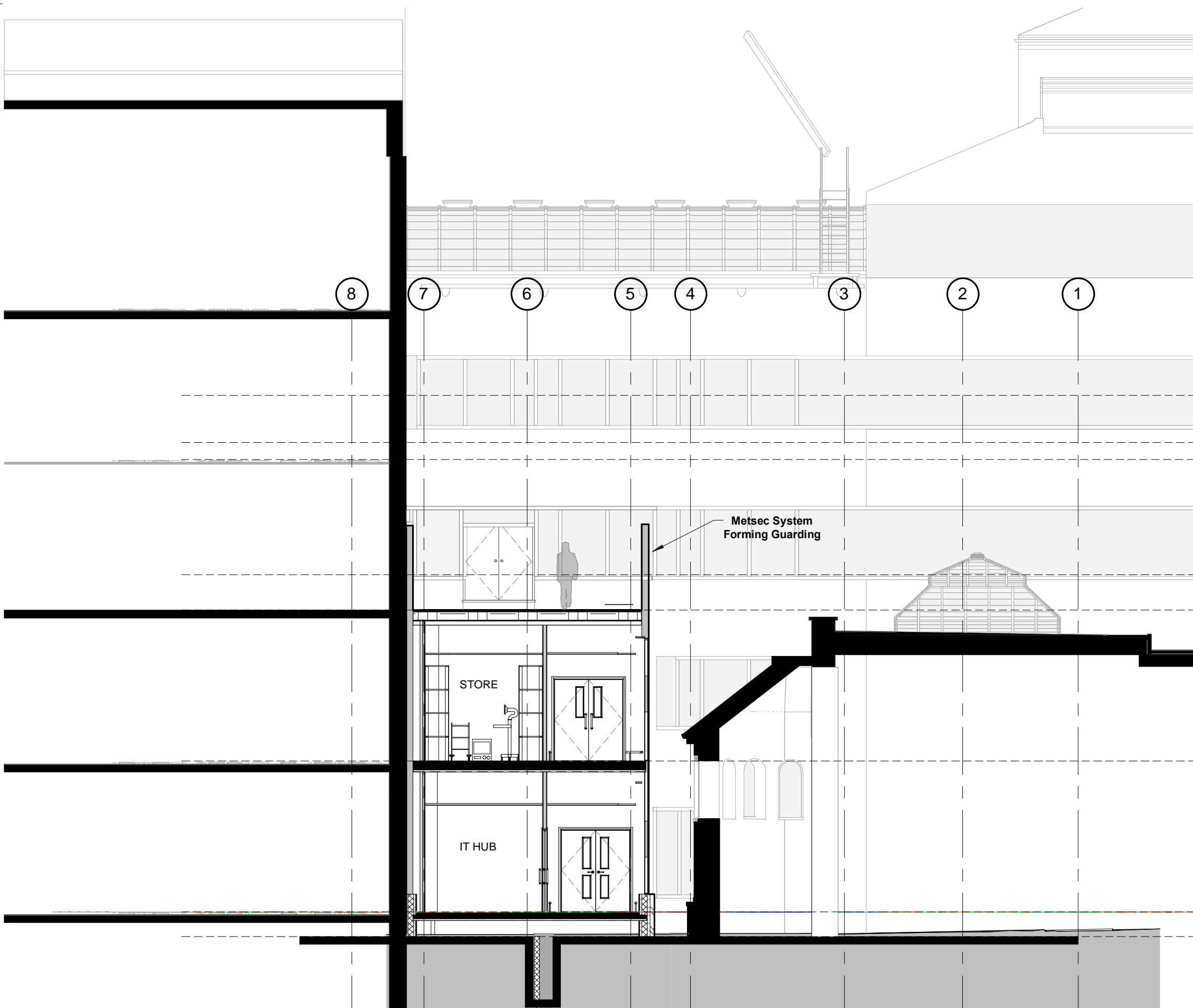
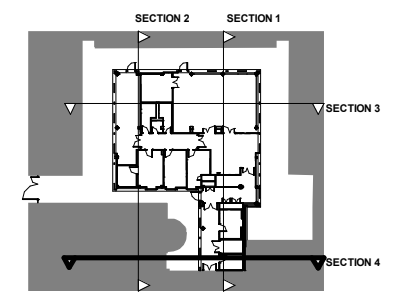
For Section Lines See Drawing 16021(01)029 - Proposed Level 02 (Ground Floor) Plan showing surrounding clinical uses

Proposed Section 3	16021 JOB NUMBER	(03)008 DRAWING NUMBER	G REV
Great Ormond Street Hospital for Children - NHS Foundation Trust	27/03/2017 DATE	As indicated SCALE @ A3	

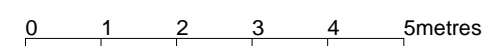
Ansell & Bailey LLP Chartered Architects, 24-32 Stephenson Way, London, NW1 2HD, 020 73870141, architects@ansellandbailey.com

THIS DRAWING IS PROTECTED BY COPYRIGHT - FIGURED DIMENSIONS ONLY TO BE TAKEN FROM THIS DRAWING. DIMENSIONS TO BE CHECKED ON SITE AND ANY DISCREPANCIES REPORTED TO THE ARCHITECT IMMEDIATELY.
 PURPOSE OF ISSUE - A = FOR COMMENT/CO-ORDINATION B = FOR INFORMATION C = FOR APPROVAL D = FOR TENDER E = FOR CONSTRUCTION F = FINAL DESIGN DRAWING

Rev	Rev Date	Revision Description	Drawn/Checked	Purpose of Issue
A	07/04/2017	General Update	VS/MH	A
B	13/04/2017	General Update	VS/MH	A
C	28/04/2017	Pricing Issue	VS/MH	P
D	12/05/2017	For Planning	VS/MH	C
E	25/05/2017	For Planning	VS/MH	P
F	01/12/2017	For comments	FY/MH	A
G	09/03/2018	Link Plant removed	FY/MH	A



- Top Parapet 36685.00 mm
- Level Roof 35485.00 mm
- VCB Floor Level 05 35060.00 mm
- Level 04A 32135.00 mm
- Level 04 31235.00 mm
- Level 03 27410.00 mm
- Level 02 23585.00 mm
- Level Courtyard 22960.00 mm



For 1:100 scale

Proposed Section 4	16021	(03)009	G
	JOB NUMBER	DRAWING NUMBER	REV
Great Ormond Street Hospital for Children - NHS Foundation Trust	27/03/2017	As indicated	
	DATE	SCALE @ A3	

For Section Lines See Drawing 16021(01)029 - Proposed Level 02 (Ground Floor) Plan showing surrounding clinical uses

Ansell & Bailey LLP Chartered Architects, 24-32 Stephenson Way, London, NW1 2HD, 020 73870141, architects@ansellandbailey.com