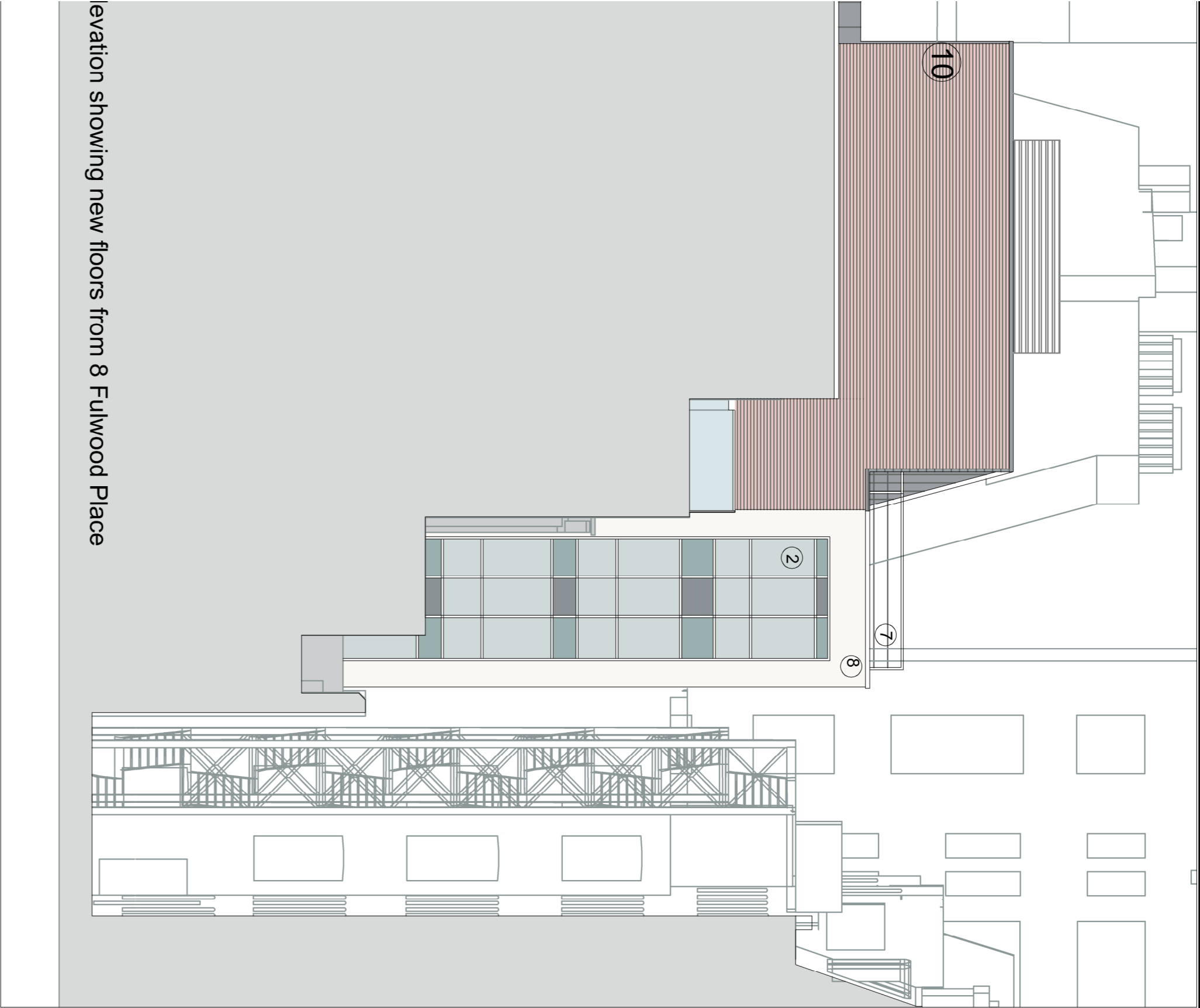


This drawing is copyright and may not be reproduced without the permission of gcp
Chartered Architects Ltd. • All drawings to be read in conjunction with the project
and Caddis of practice. • Except for the purposes of assessing planning
and Caddis of practice, no part of this drawing may be reproduced, stored in a
retrieval system, or transmitted in any form or by any means, electronic, mechanical,
photocopying, recording, or by any information storage and retrieval system, without
the prior written permission of gcp Chartered Architects Ltd.

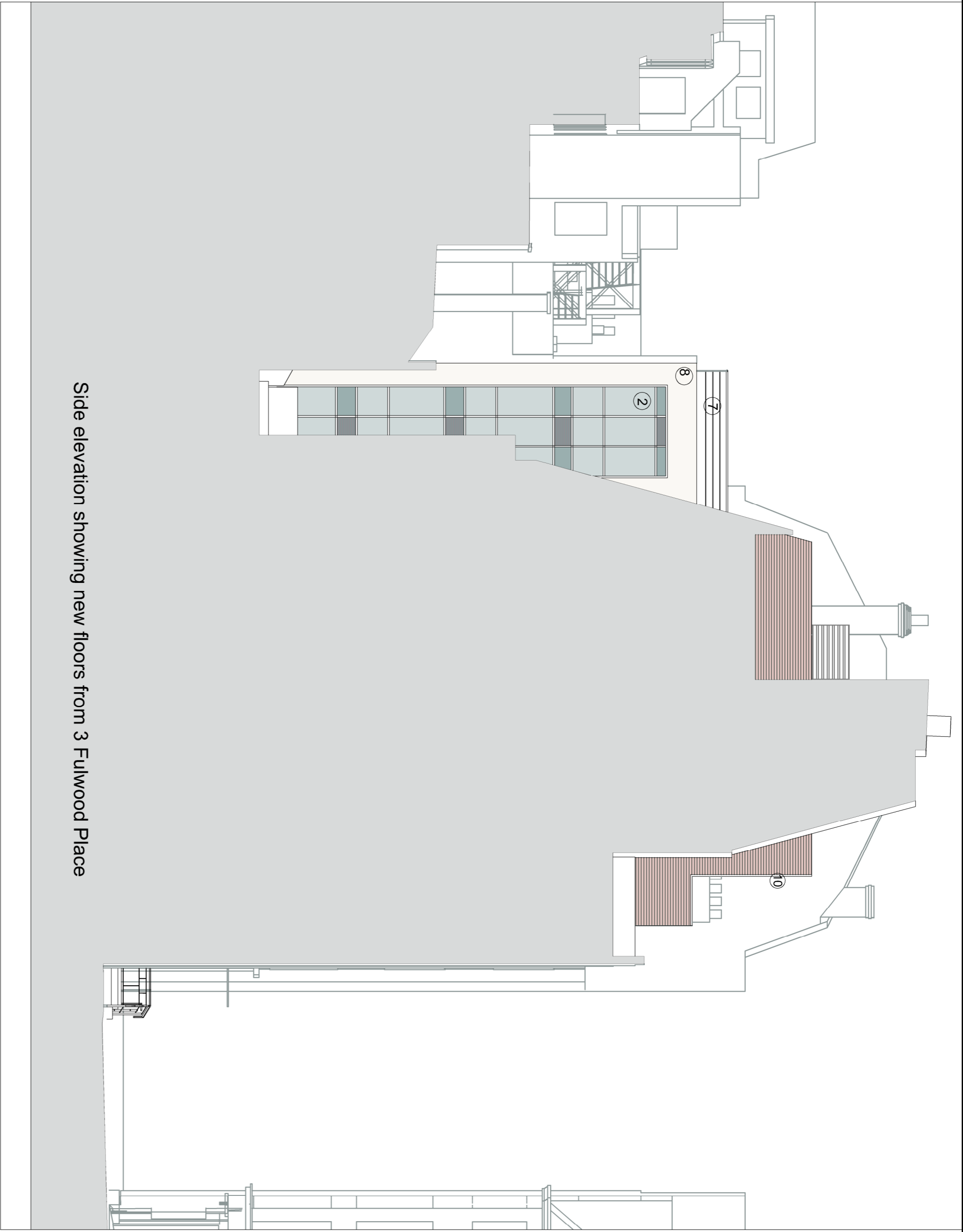


Legend

- 1 Introducing vertical zinc cladding with natural finish.
- 2 New black colour self finish colour coated aluminium solar glass and opening lights, including doors at fifth floor level to access terrace areas.
- 3 Replacement double glazed aluminium framed windows to front elevation onto Fulwood Place and rear elevation in grey colour coated battery finish.
- 4 Proprietary self finish through colour thin coat render system or insulation to rear elevation - colour white.
- 5 Curved automated glass door lobby drum unit.
- 6 Remodelled entrance ramp and steps with balustrade system in colour coated black steel with stainless steel handrailing - see drawing 220 for details.
- 7 Stainless steel balustrade to roof terraces - see drawing 221 for details.
- 8 New insulated render system.
- 9 Brick slip mill panels. Brick to match existing.
- 10 Brick finish to extension flank walls. Brick to match existing.



Elevation showing new floors from 8 Fulwood Place



Side elevation showing new floors from 3 Fulwood Place



Indicative plant compound set back from front elevation on roof.



Indicative plant compound set back from rear elevation on roof behind 1.1m high acoustic fence.

| | |
|---|--|
| gcp Chartered Architects | |
| gcp Chartered Architects | architects project management sustainable design |
| Studio 10, County 2, Green Way, Brixton B8 8J, London SW9 6JL | enquiries@gcp.co.uk |
| 020 7733 0000 | www.gcp.co.uk |
| Project Title | |
| Elizabeth House | |
| 4 / Fulwood Place - London | |
| Drawing Title | |
| Proposed Elevations and Sections | |
| Drawn By: TML | Date: June 2017 |
| Checked By: JPL | Scale: 1:100 @ A1 |
| Drawing No: 17008/205 | Rev: H |
| Status: PLANNING | |

ERROR: dictfull
OFFENDING COMMAND: image
STACK: