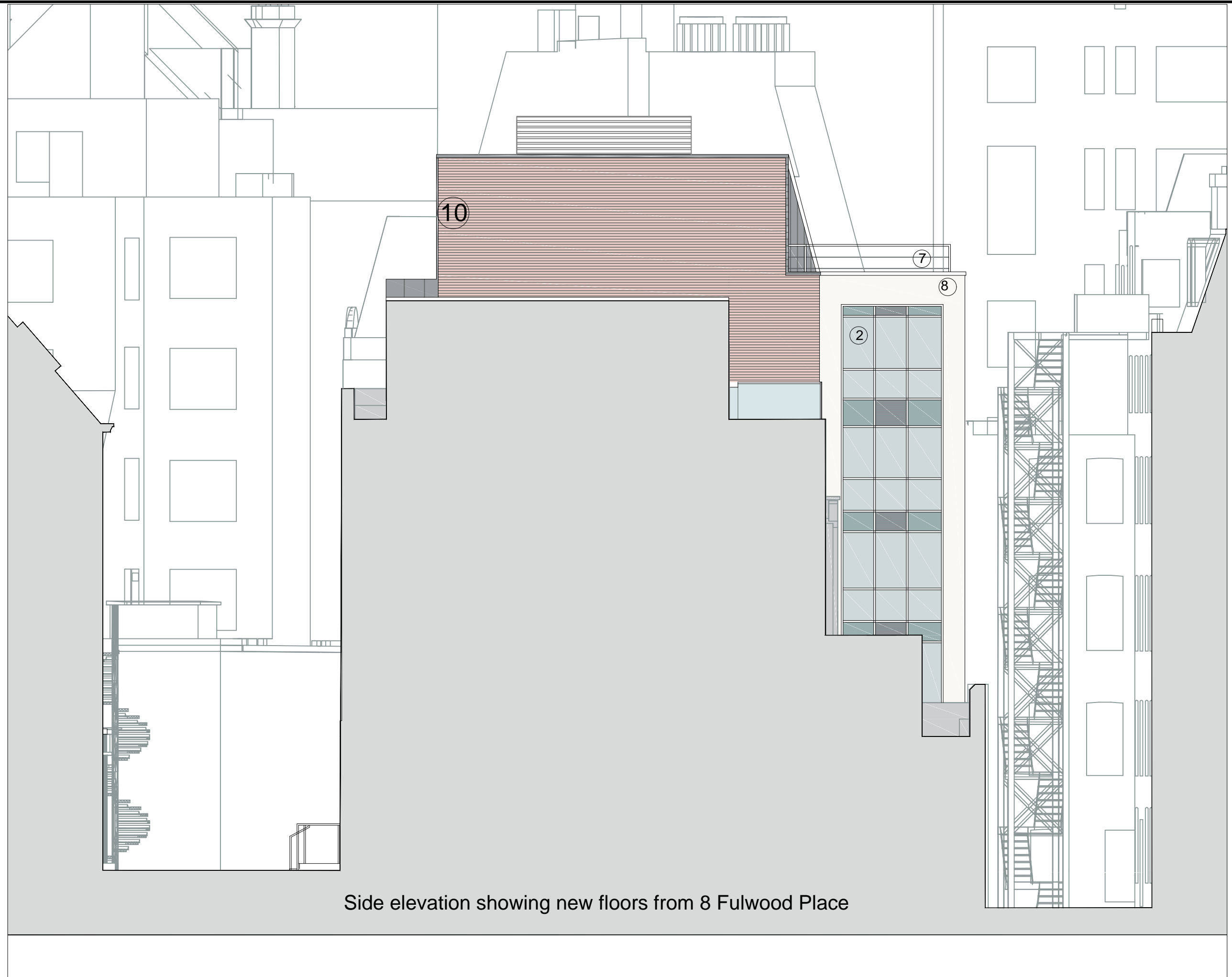


This drawing is copyright and may not be reproduced without the permission of gcp Chartered Architects Ltd. All drawings to be read in conjunction with the project specification with all works carried out in accordance with the latest British Standards and Codes of practice. Except for the purposes of assessing planning applications, this drawing is not to be scaled. Use figured dimensions only. All dimensions are to be checked on site and any discrepancies between this drawing and other information given elsewhere must be reported to gcp Chartered Architects before work proceeds.



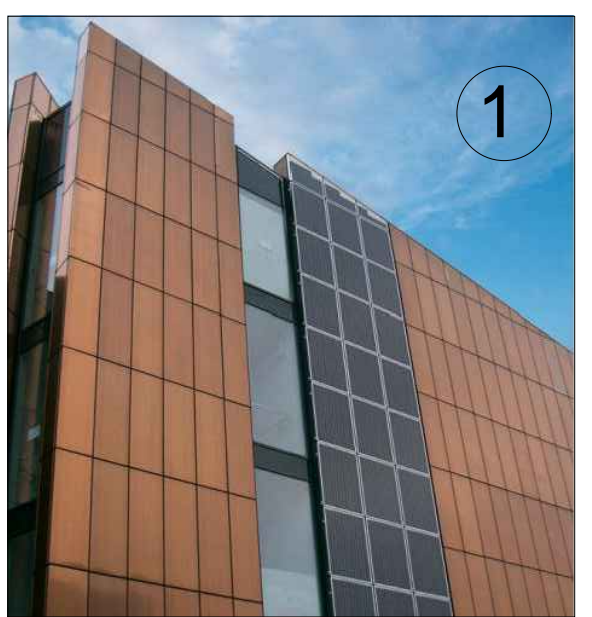
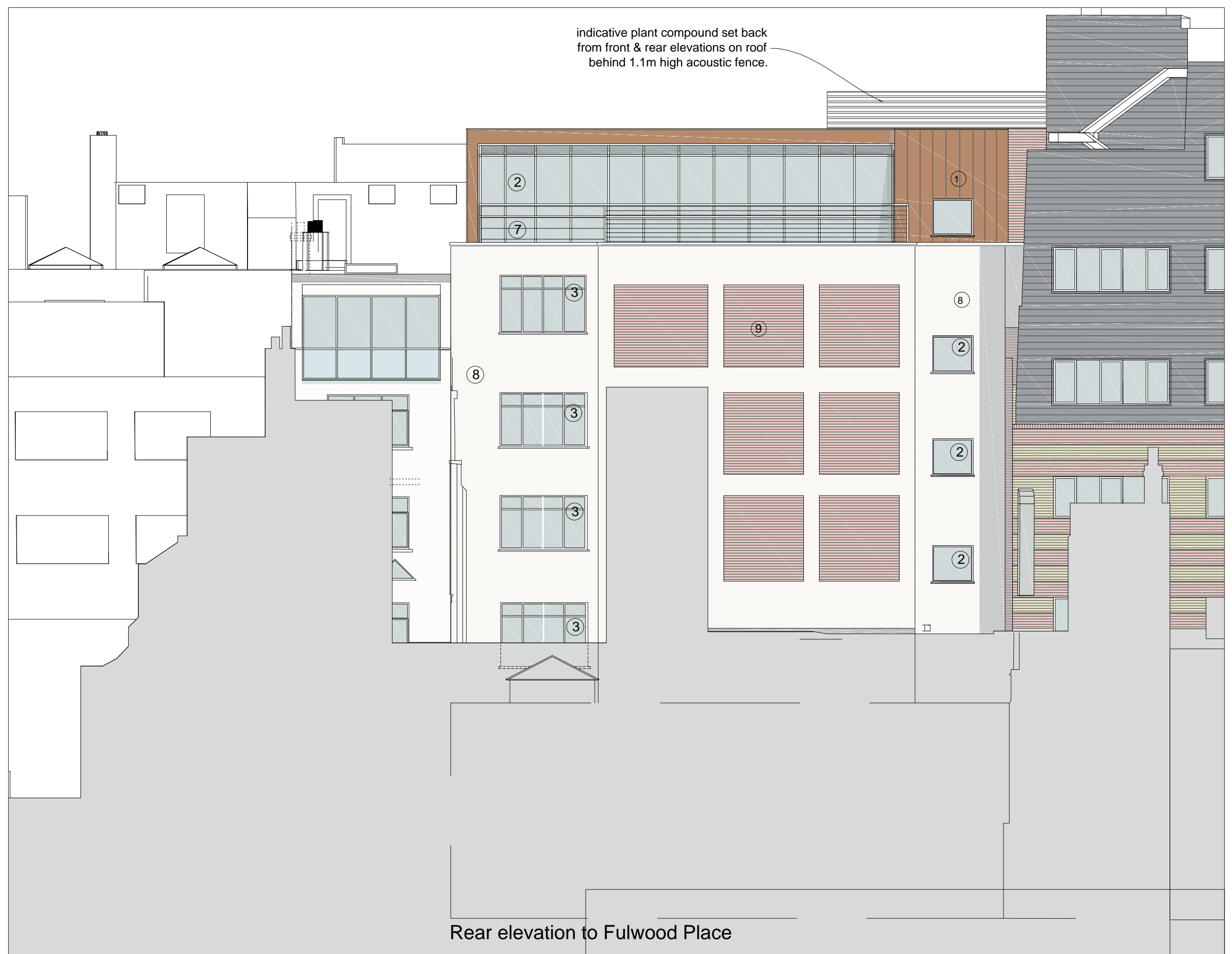
Side elevation showing new floors from 8 Fulwood Place



Side elevation showing new floors from 3 Fulwood Place



Rear elevation to Fulwood Place



**Legend**

- ① Interlocking vertical Bronze cladding.
- ② New black colour self finish colour coated aluminium framed windows and curtain walling systems, with solar glass and opening lights, including doors at fifth floor level to access terrace areas
- ③ Replacement double glazed aluminium framed windows to front elevation onto Fulwood Place and rear elevation in grey colour coated factory finish
- ④ Proprietary self finish through colour thin coat render system on insulation to rear elevation - colour white
- ⑤ Curved automated glass door lobby drum unit
- ⑥ Remodelled entrance ramp and steps with balustrade system in colour coated black steel with stainless steel handrailing - see drawing 220 for details
- ⑦ Stainless steel balustrade to roof terraces - see drawing 221 for details
- ⑧ New insulated render system.
- ⑨ Brick slip infill panels. Brick to match existing.
- ⑩ Brick finish to extension flank walls. Brick to match existing on and adjacent to site.

Revision	Description	Rev By	Date
I	Metal cladding amended to bronze	-	13.03.2018
H	Mansard removed	-	06.03.2018
G	Roof extension material amended	-	16.02.2018
F	Roof extension set back	-	13.02.2018
E	Rear elevation materials amended	-	18.12.2017
D	Planning submission	-	23.10.2017
C	amended front elevation	-	10.10.2017
B	4th fl set back indicated	-	31.07.2017
A	Pre-Planning submission	-	09.06.2017

**gcp Chartered Architects**  
 architecture project management sustainable design  
 Suite 10, Conum 2  
 Conum Office Park  
 Crown Way  
 Wansley  
 Bristol BS30 8FJ  
 T: 0117 9670286  
 mail@gcparch.co.uk  
 www.gcparch.co.uk

Project Title: Elizabeth House  
 4-7 Fulwood Place - London  
 Drawing Title: Proposed Elevations and Sections  
 Drawn By: TM Date: June 2017  
 Checked By: JPL Scale: 1:100 @ A1  
 Drawing No: 17008/205 Rev: I  
 Status: PLANNING