

# Conway Street, London, W1T

For Sale: 1 Bedroom Apartment – Offers in the region of £619,950

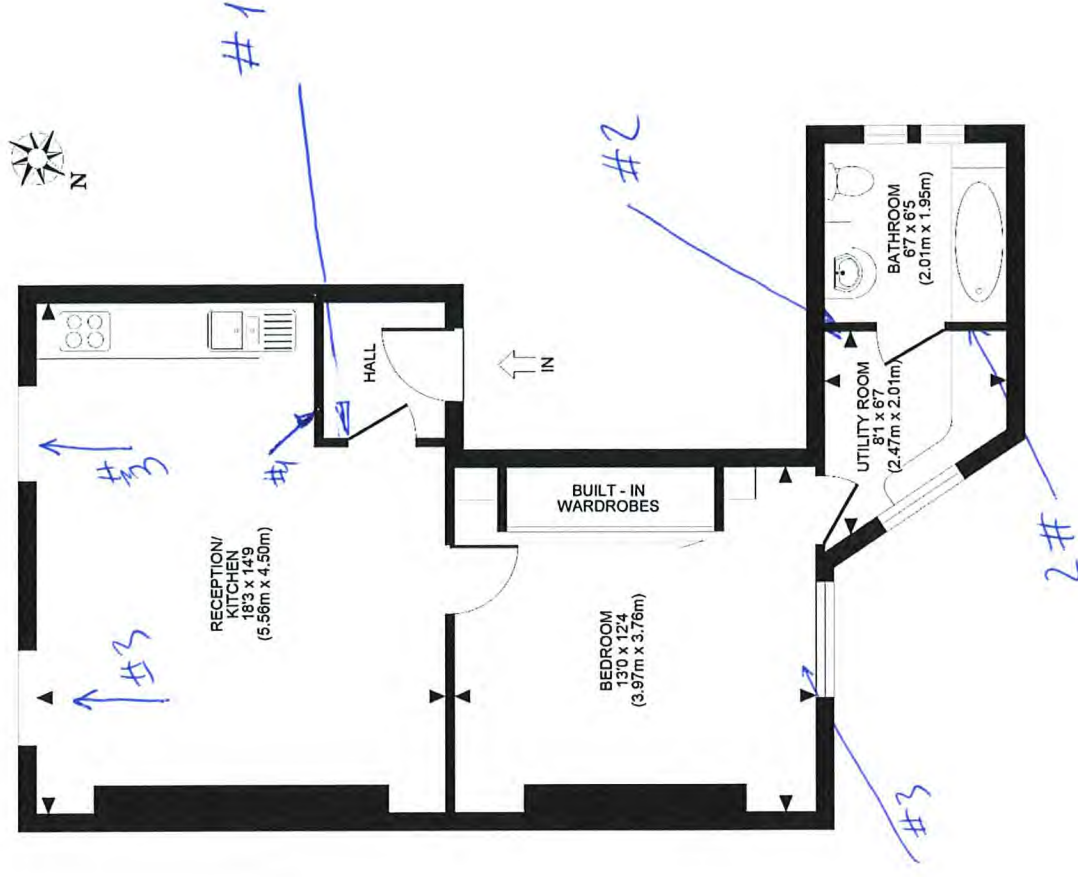
# ANTON PAGE





Beautifully presented, light and airy apartment in a well-kept Georgian property on the edge of Fitzroy Square gardens on Conway Street, W1T

CONWAY STREET, W1  
TOTAL APPROX FLOOR PLAN AREA 517 SQ.FT (48 SQ.M.)  
SECOND FLOOR



A beautiful and wonderfully positioned City pad, early viewing is highly recommended.

The property benefits from very quiet residential surroundings whilst being a short walk from the array of shops and restaurants on Charlotte street, as well as an extensive list of transport options.

The apartment is spacious, well-proportioned and is located on the second floor of end of terrace Georgian property. Whilst the property is leasehold, there are discussions amongst the current residents regarding purchasing a Share of Freehold ownership.

Transport all within a 5-minute walk: Warren Street, Great Portland Street, Regents Park, Goodge Street, Bond Street, Oxford Circus.

- Beautiful end of terrace Georgian property
- Next to Fitzroy Square Gardens
- Lovely bright and airy apartment
- High ceilings – large sash windows
- Great condition throughout
- Quiet central location
- Option to purchase share of freehold
- Outstanding location and transport links
- Offered chain free







**For further information please contact:**

**ANTON PAGE**  
**020 7336 1313**

**[spage@antonpage.com](mailto:spage@antonpage.com)**  
**[wswinburn@antonpage.com](mailto:wswinburn@antonpage.com)**

This message is intended solely for the use of the individual or organization to whom it is addressed. It may contain privileged or confidential information. If you have received this message in error, please notify the originator immediately. If you are not the intended recipient, you should not use or disclose the contents of this message. Nothing in this message constitutes a legal contract or purchasing order. All information or opinions expressed in this message and/or any attachments are those of the author and are not necessarily those of Anton Page LLP. Anton Page LLP accepts no responsibility for the loss or damage arising from its use, including damage from virus or other malicious executable code. All transactions are subject to contract and information contained in this e-mail may not be correct.

21 Pear Tree Street  
London EC1V 3AP  
[www.antonpage.com](http://www.antonpage.com)