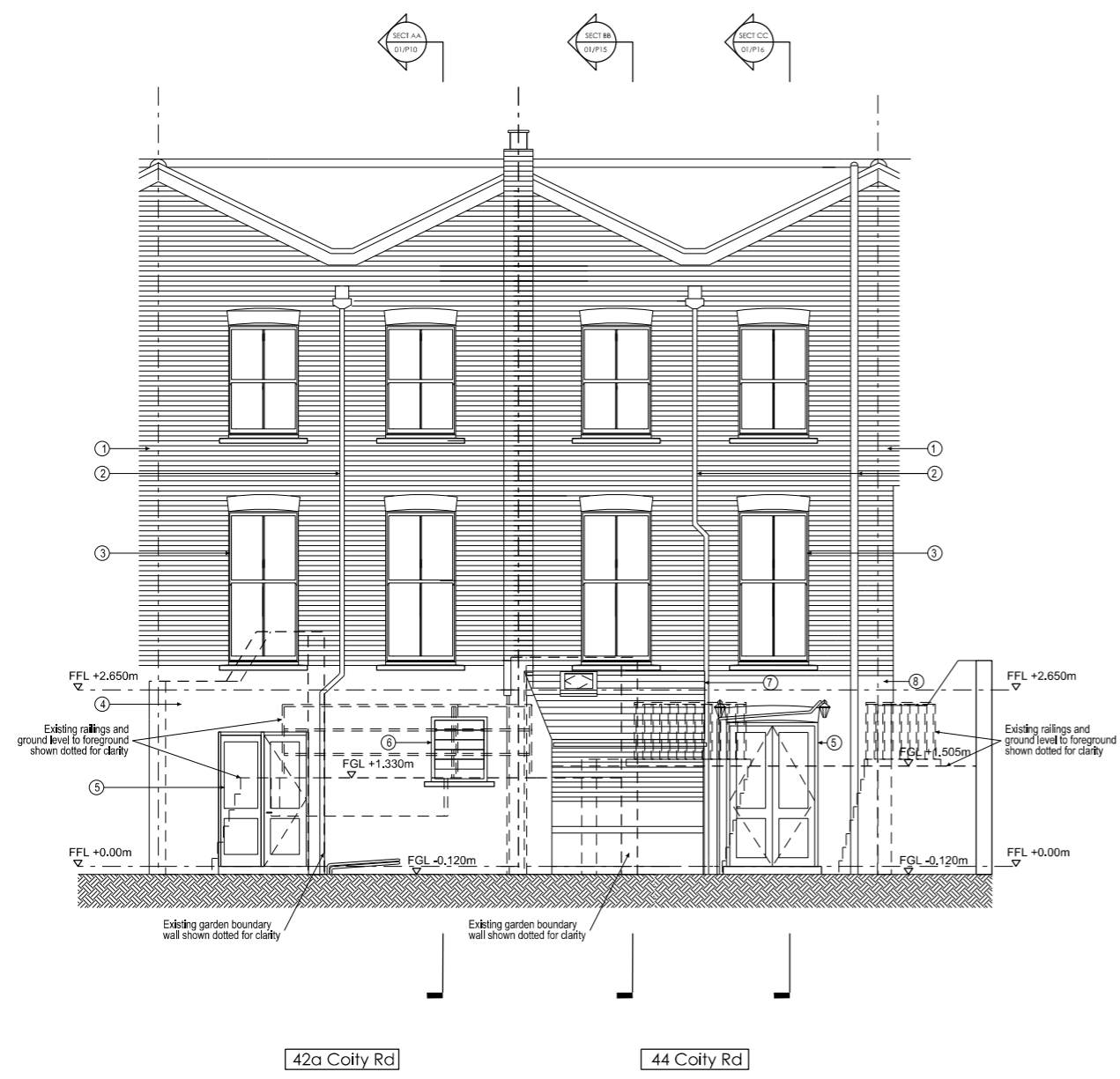


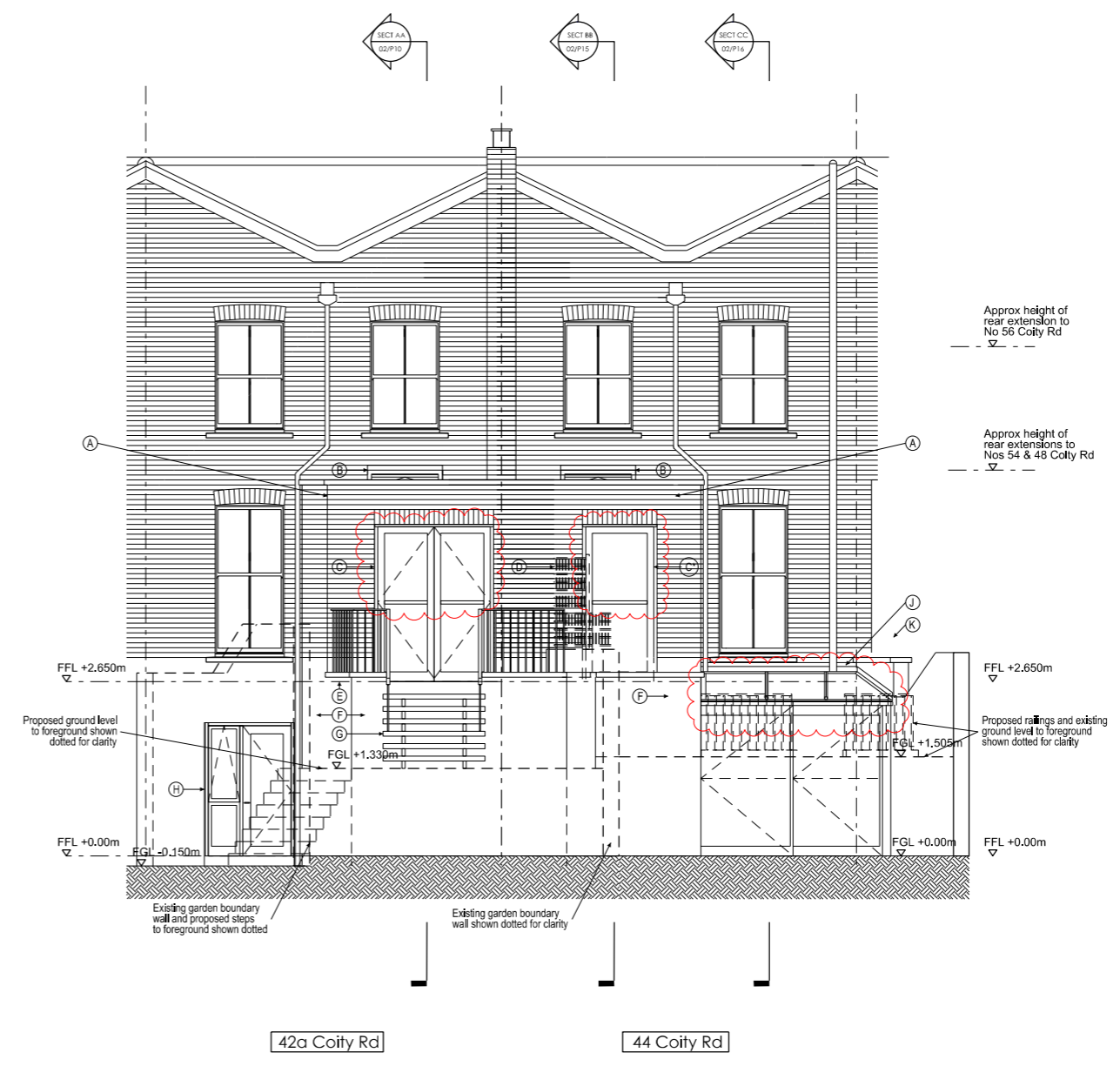
NOTES:

- Materials Key - Existing**
- 1 Yellow London Stock Brick
 - 2 Black plastic rainwater downpipes and black cast iron soil vent pipes
 - 3 White painted, single glazed timber sash windows
 - 4 White painted render
 - 5 White painted, single glazed timber door and fixed window
 - 6 Metal framed, translucent single glazed louvre window
 - 7 Fairly white painted brick rear extension with monopitch slate roof and Velux type opening roof light
 - 8 White painted brick

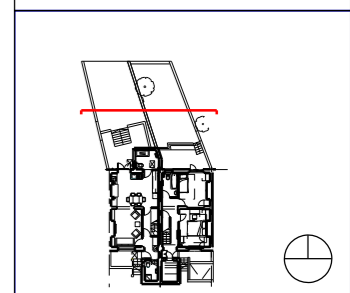
- Materials Key - Proposed**
- A Yellow London Stock Brick rear extension with pre-cast concrete copings
 - B Opening Velux style composite rooflight with translucent film for privacy
 - C White painted, double glazed timber bi-fold doors with top-hung opening windows over
 - C' White painted, fixed double glazed timber window with top-hung opening windows over. All to have translucent film for privacy.
 - D Timber trellis privacy screen
 - E Dark painted steel balustrade
 - F White painted render
 - G Dark painted steel staff and balustrade with timber treads
 - H White painted, double glazed timber door with top-hung opening and fixed windows to the side.
 - J Double glazed conservatory with metal framed sliding doors and top hung windows above
 - K Garden boundary wall raised, with concrete coping added



01 - Existing Elevation looking South 1:50 @A1



02 - Proposed Elevation Looking South 1:50 @A1



REV	DATE	DETAIL	DRN	CHK
01	20.11.17	Detail design option: Penetration and profile to conservatory amended. Penetration to new extension amended. - refer revision details	AA	SG

PROJECT TITLE
NEW EXTENSIONS
 42A & 44 Coity Rd, KENTISH TOWN

DRAWING TITLE	
Elevation 01: Existing & Proposed	
DATE	SCALE
07.04.2017	1:50 @A1 1:100 @A3
STATUS	DRAWN
PLANNING	CHECKED

DRAWING NUMBER	REVISION
42A & 44_Coity_P_20	01

Alexander Abbey, 42A Coity Rd, Kentish Town, London NW5 4RY.
 Mob: 07791 731 121. e-mail: alex.abbey@cullinstudio.com
 © Alexander Abbey 2017

