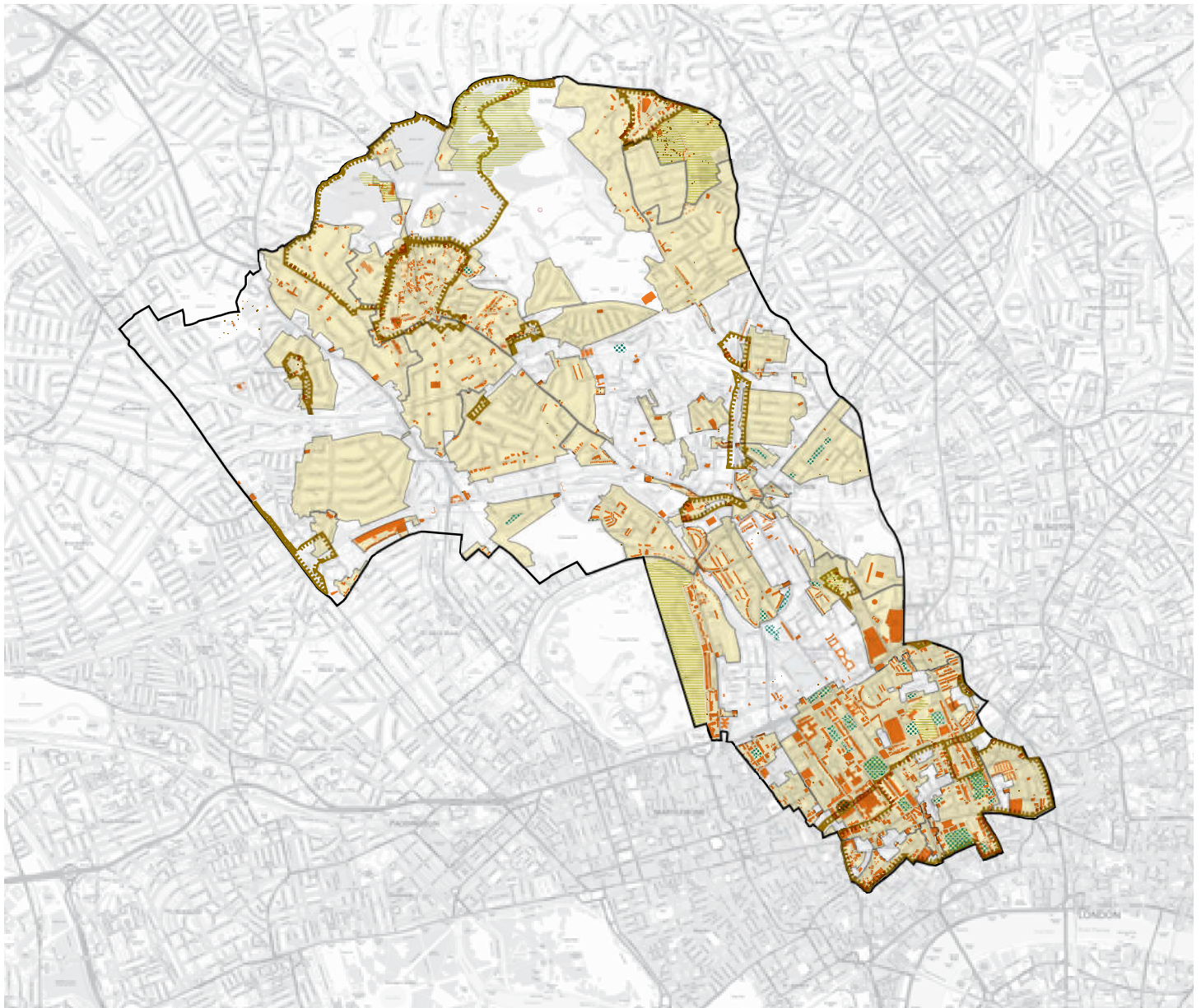








Heritage

Camden's heritage

- 7.39 Camden has a rich architectural heritage with many special places and buildings from throughout Camden's history (see Map 4: Heritage and Archaeological Sites on page 234). 39 areas, covering much of the borough, are designated as conservation areas, recognising their special architectural or historic interest and their character and appearance. We have prepared conservation area statements, appraisals and management strategies that provide further guidance on the character of these areas. We will take these documents into account as material considerations when we assess applications for planning permission in these areas.
- 7.40 Over 5,600 buildings and structures in Camden are nationally listed for their special historical or architectural interest and 53 of the borough's squares are protected by the London Squares Preservation Act 1931. In addition, 14 open spaces in Camden are on Historic England's Register of Parks and Gardens. The Council also maintains a local list of over 400 non-designated heritage assets. Camden also has a generally well-preserved archaeological heritage, with 13 identified archaeological priority areas, although this can be vulnerable to development and changes in land use.
- 7.41 The Council places great importance on preserving the historic environment. Under the Planning (Listed Buildings and Conservation Areas) Act the Council has a responsibility to have special regard to preserving listed buildings and must pay special attention to preserving or enhancing the character or appearance of conservation areas. The National Planning Policy Framework states that in decision making local authorities should give great weight to conservation of designated heritage assets in a manner appropriate to their significance. The Council expects that development not only conserves, but also takes opportunities to enhance, or better reveal the significance of heritage assets and their settings.

Map 4: Heritage and Archaeological Sites



- | | | |
|---|--|--|
|  Conservation area |  London Squares |  Borough boundary |
|  Listed building |  Gardens and Squares of Historic Interest | |
|  Archaeological priority area | | |

Policy D2 Heritage

The Council will preserve and, where appropriate, enhance Camden's rich and diverse heritage assets and their settings, including conservation areas, listed buildings, archaeological remains, scheduled ancient monuments and historic parks and gardens and locally listed heritage assets.

Designated heritage assets

Designated heritage assets include conservation areas and listed buildings. The Council will not permit the loss of or substantial harm to a designated heritage asset, including conservation areas and Listed Buildings, unless it can be demonstrated that the substantial harm or loss is necessary to achieve substantial public benefits that outweigh that harm or loss, or all of the following apply:

- a. the nature of the heritage asset prevents all reasonable uses of the site;
- b. no viable use of the heritage asset itself can be found in the medium term through appropriate marketing that will enable its conservation;
- c. conservation by grant-funding or some form of charitable or public ownership is demonstrably not possible; and
- d. the harm or loss is outweighed by the benefit of bringing the site back into use.

The Council will not permit development that results in harm that is less than substantial to the significance of a designated heritage asset unless the public benefits of the proposal convincingly outweigh that harm.

Conservation areas

Conservation areas are designated heritage assets and this section should be read in conjunction with the section above headed 'designated heritage assets'. In order to maintain the character of Camden's conservation areas, the Council will take account of conservation area statements, appraisals and management strategies when assessing applications within conservation areas.

The Council will:

- e. require that development within conservation areas preserves or, where possible, enhances the character or appearance of the area;
- f. resist the total or substantial demolition of an unlisted building that makes a positive contribution to the character or appearance of a conservation area;
- g. resist development outside of a conservation area that causes harm to the character or appearance of that conservation area; and
- h. preserve trees and garden spaces which contribute to the character and appearance of a conservation area or which provide a setting for Camden's architectural heritage.

Listed Buildings

Listed buildings are designated heritage assets and this section should be read in conjunction with the section above headed 'designated heritage assets'. To preserve or enhance the borough's listed buildings, the Council will:

- i. resist the total or substantial demolition of a listed building;
- j. resist proposals for a change of use or alterations and extensions to a listed building where this would cause harm to the special architectural and historic interest of the building; and
- k. resist development that would cause harm to significance of a listed building through an effect on its setting.

Archaeology

The Council will protect remains of archaeological importance by ensuring acceptable measures are taken proportionate to the significance of the heritage asset to preserve them and their setting, including physical preservation, where appropriate.

Other heritage assets and non-designated heritage assets

The Council will seek to protect other heritage assets including non-designated heritage assets (including those on and off the local list), Registered Parks and Gardens and London Squares.

The effect of a proposal on the significance of a non-designated heritage asset will be weighed against the public benefits of the proposal, balancing the scale of any harm or loss and the significance of the heritage asset.

Enhancing the historic environment

7.42

The Council has a proactive approach to conserving heritage assets. In addition to the application of Local Plan policies the Council protects the historic environment through the following areas of work:

- Conservation Area Management Strategies: The Council works with the Conservation Area Advisory Committees to update and support the implementation of the strategies.
- Heritage at Risk: The Council identifies buildings and structures at risk and proactively seeks to conserve and where required put them back into viable use, including identifying sources of funding.
- Local list of undesignated heritage assets: The Council introduced the local list in 2015 and it will be updated annually.
- Guidance: The Council has adopted detailed guidance for the preservation of heritage assets in the supplementary planning document Camden Planning Guidance on design, and Retrofitting Planning Guidance (for sustainability measures in historic buildings). The Council updates planning guidance as required.

- Area based work: Conservation and enhancement of the historic environment is a key objective of area action plans and the Site Allocations. The Fitzrovia Area Action Plan for example sets principles for developing key sites which retain and enhance the setting of listed buildings.

7.43 The Council recognises that development can make a positive contribution to, or better reveal the significance of, heritage assets and will encourage this where appropriate. Responding appropriately to the significance of heritage assets and its setting can greatly enhance development schemes (for example, King's Cross Central).

Designated heritage assets

7.44 Designated heritage assets include listed buildings and structures, registered parks and gardens and conservation areas. The Council will apply the policies above and will not permit harm to a designated heritage asset unless the public benefits of the proposal outweigh the harm. Further guidance on public benefits is set out in National Planning Practice Guidance (Paragraph: 020 Reference ID: 18a-020-20140306). Any harm to or loss of a designated heritage asset will require clear and convincing justification which must be provided by the applicant to the Council. In decision making the Council will take into consideration the scale of the harm and the significance of the asset.

7.45 In accordance with the National Planning Policy Framework the Council will only permit development resulting in substantial harm to or loss to a grade II listed building, park or garden in exceptional circumstances and will only permit development resulting in substantial harm to or loss to a grade I and II* listed building, grade I and II* registered park or garden in wholly exceptional circumstances.

Conservation areas

7.46 In order to preserve or enhance important elements of local character, we need to recognise and understand the factors that create that character. The Council has prepared a series of conservation area statements, appraisals and management plans that assess and analyse the character and appearance of each of our conservation areas and set out how we consider they can be preserved or enhanced. We will take these into account when assessing planning applications for development in conservation areas. We will seek to manage change in a way that retains the distinctive characters of our conservation areas and will expect new development to contribute positively to this. The Council will therefore only grant planning permission for development in Camden's conservation areas that preserves or enhances the special character or appearance of the area.

7.47 The character of conservation areas derive from the combination of a number of factors, including scale, density, pattern of development, landscape, topography, open space, materials, architectural detailing and uses. These elements should be identified and responded to in the design of new development. Design and Access Statements should include an assessment of local context and character and set out how the development has been informed by it and responds to it.