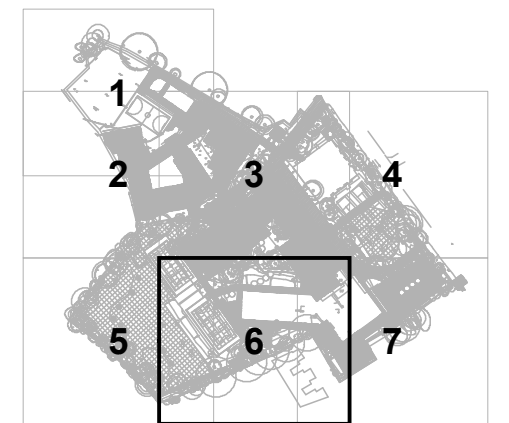


KEY

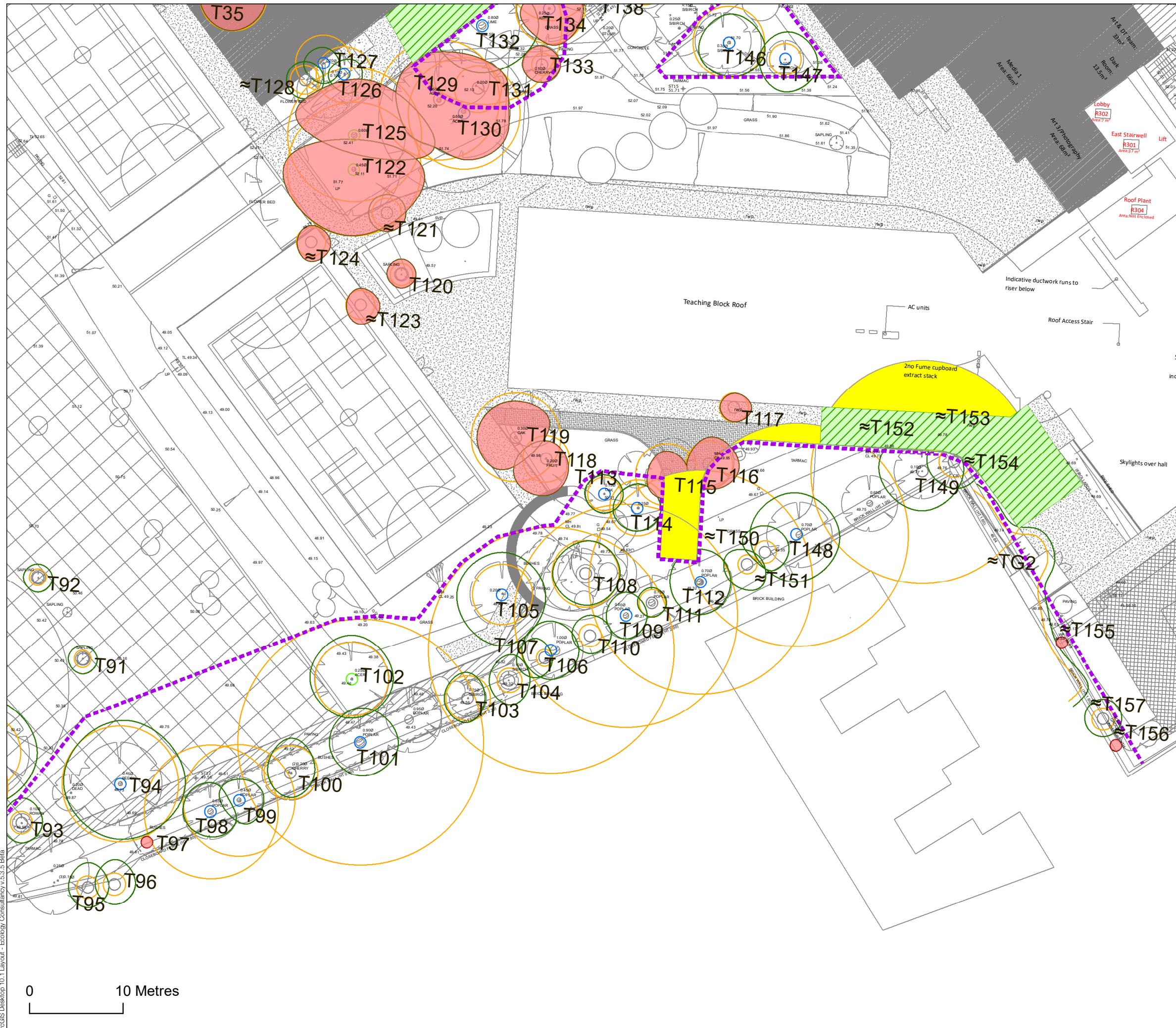
	Category A - Trees
	Category B - Trees with moderate quality and value
	Category C - Trees with low quality and value
	Category U - Trees with significant overall decline
	Crown spread
	Root Protection Area (RPA)
	Trees to be removed
	Incursions
	Figure 2 BS5837: 2012 Specification fencing (High Impact Areas)
	Permanent ground protection/specialist foundation





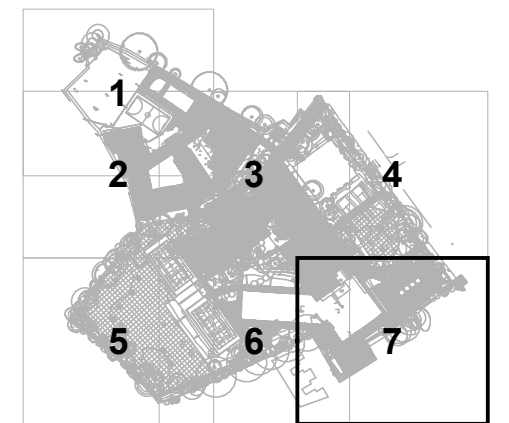
KEY

- Category A - Trees
- Category B - Trees with moderate quality and value
- Category C - Trees with low quality and value
- Category U - Trees with significant overall decline
- Crown spread
- Root Protection Area (RPA)
- Trees to be removed
- Incursions
- Figure 2 BS5837: 2012 Specification fencing (High Impact Areas)
- Permanent ground protection/specialist foundation



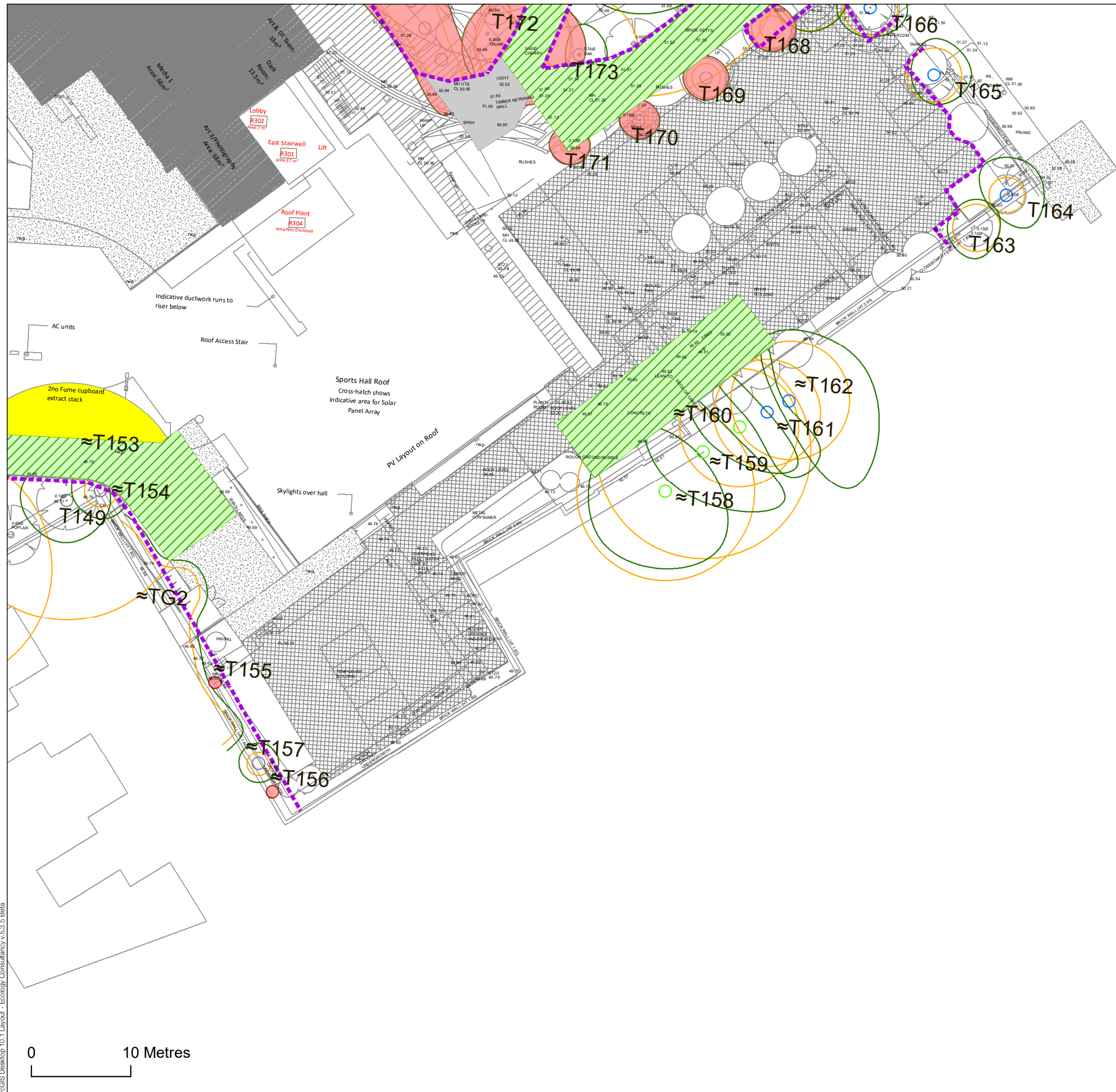
0 10 Metres





KEY

- Category A - Trees
- Category B - Trees with moderate quality and value
- Category C - Trees with low quality and value
- Category U - Trees with significant overall decline
- Crown spread
- Root Protection Area (RPA)
- Trees to be removed
- Incursions
- Figure 2 BS5837: 2012 Specification fencing (High Impact Areas)
- Permanent ground protection/specialist foundation



0 10 Metres