

Project No 779	Project Branch Hill	Issue Date 09.03.18	Page No 1
Document 709	Title External Materials Schedule	Revision PL01	Author PN



Contents

1.0	Building Exteriors	2
1.1	Finishes Location View	2
1.2	Specification	2

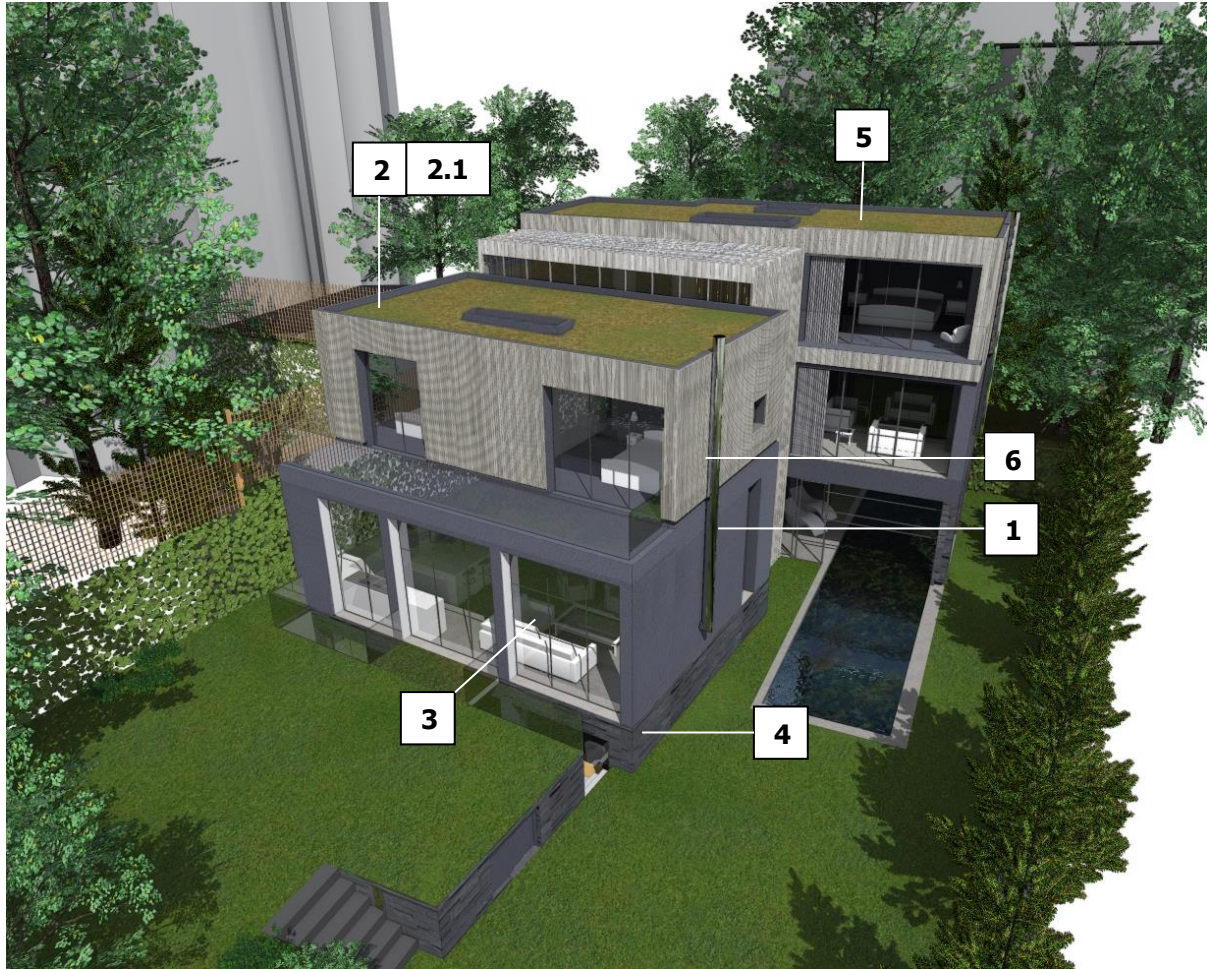
Rev	Date	Change/ Comments	Author
PL01	09.03.18	Planning Conditions Approval	PN

P:\750-800\0779 - Branch Hill\04 Job Administration\18.00 Specifications\779.18.709 External Materials Specification Planning.docx



Building Exteriors




1.1 Finishes Location View






1.2 Specification

Item	Element	Description
1	External Render RN01	Thin layer render system from Bauder. SilikonTop K1.5, colour 0894 with all associated system elements. System applied on Kingspan Kooltherm K5 boards, suitability confirmed by Baunit. Baunit, W/ www.other.baunit.com



			
2	Batten cladding to FF	Millboard Square Edging battens, finish Golden oak. Product code MEUN32G. Size 50mm wide, 33mm deep.	
2.1	FF Cladding backing membrane	20mm gap with DuPont Tyvec UV Façade membrane backing.	
3	Aluminium Fenestrations and Flashing	<p>Polyester powder coated aluminium profiles, colour RAL7016. Relates to all external fenestrations (refer to fenestration schedule) main parapet wall flashing. Recommended supplier for fenestrations is Northolt Glass who have assisted with the design process and frame selection;</p> <p>Rooflights by Glazing Vision or similar to be finished in standard system finish PPC dark grey finish;</p>	

<p>4</p>	<p>Stone plinth, planters, retaining garden wall</p>	<p>Split face stone. Norstone Charcoal XLV Cladding W/ www.norstone.co.uk; E/ sales@norstoneuk.com</p> 
<p>5</p>	<p>Green Roof Planting</p>	<p>Extensive green roof from Bauder, 80mm soil build up. Plug plants, type TBC with Bauder.</p>  <p>Refer to build up drawings and Bauder technical specification for further information</p> <p>Gravel perimeter band: River washed 20-40mm rounded gravel, light colour</p> 
<p>6</p>	<p>Flues and flue termination</p>	<p>Stainless steel double lined flues with proprietary terminations. Details to be developed with Contractor's specialist fireplace supplier (CDP);</p> 