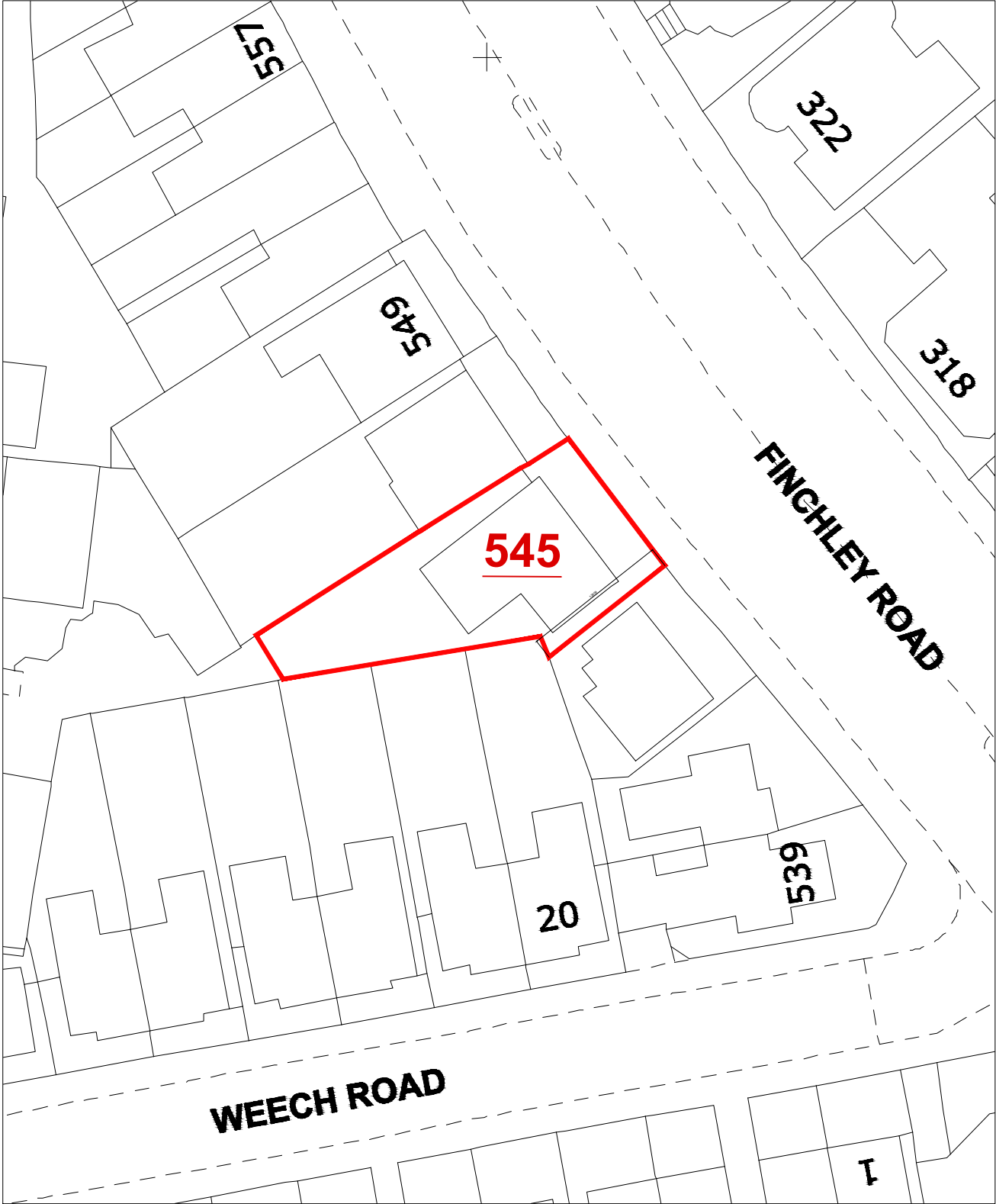
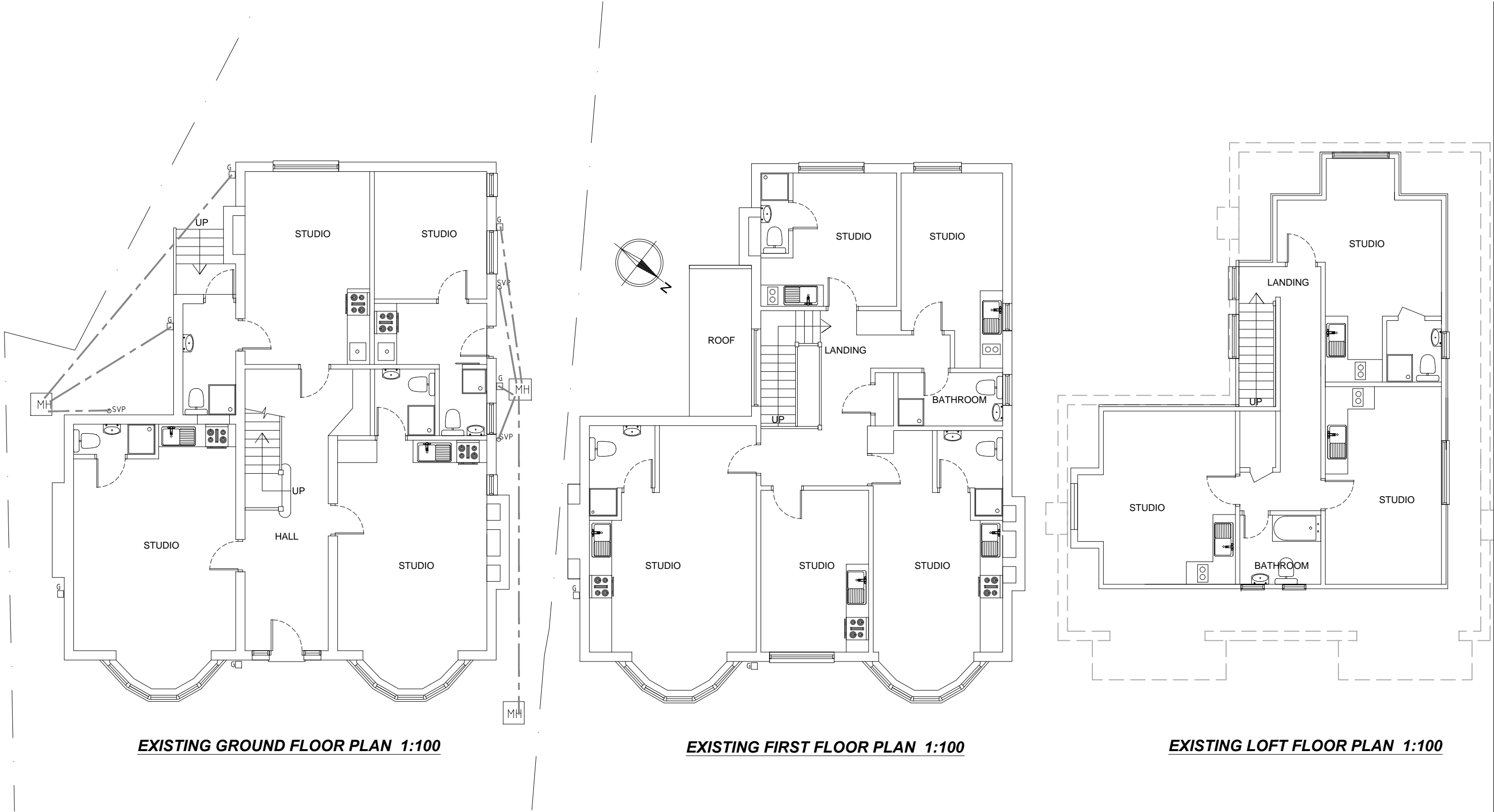


LOCATION PLAN 1:1250



BLOCK PLAN 1:500

Revision A (March 2018): External changes to windows removed from plans					<div>Client</div> <div>545 Finchley Road London, NW3 7BJ</div>	<div>Scale</div> <div>1:500, 1:1250</div>	<div>Date</div> <div>Oct 2017</div>	<div>Homecraft Design Studios Homecraft Design Studios Group Ltd.</div> <div>3 Pennine Parade, Pennine Drive London, NW2 1NT</div> <div>Mobile: 07958 501134 Email: h768@btinternet.com</div>
				<div>Scheme</div> <div>Conversion of existing HMO to a single dwellinghouse</div>	<div>Drawn by: HS Checked by: Approved by:</div>	<div>Rev.</div> <div>A.</div>		
				<div>Title</div> <div>Location &amp; Block plans</div>	<div>Drawing No.</div> <div>201710/545FR/S1</div>			
	Rev.	Description	Date					



EXISTING GROUND FLOOR PLAN 1:100

EXISTING FIRST FLOOR PLAN 1:100

EXISTING LOFT FLOOR PLAN 1:100



Revision A (March 2018): External changes to windows removed from plans				<div>Client</div> <div>545 Finchley Road London, NW3 7BJ</div>	<div>Scale</div> <div>1:100</div>	<div>Date</div> <div>Oct 2017</div>	<div>Homecraft Design Studios</div> <div>Homecraft Design Studios Group Ltd.</div> <div>3 Pennine Parade, Pennine Drive London, NW2 1NT</div> <div>Mobile: 07958 501134</div> <div>Email: h768@btinternet.com</div>
				<div>Scheme</div> <div>Conversion of existing HMO to a single dwellinghouse</div>	<div>Drawn by: HS</div> <div>Checked by:</div> <div>Approved by:</div>	<div>Rev.</div> <div>A.</div>	
				<div>Title</div> <div>Existing Plans</div>	<div>Drawing No.</div> <div>201710/545FR/01</div>		
	Rev.	Description	Date				



EXISTING FRONT ELEVATION 1:100



EXISTING REAR ELEVATION 1:100



EXISTING SIDE ELEVATION 1:100

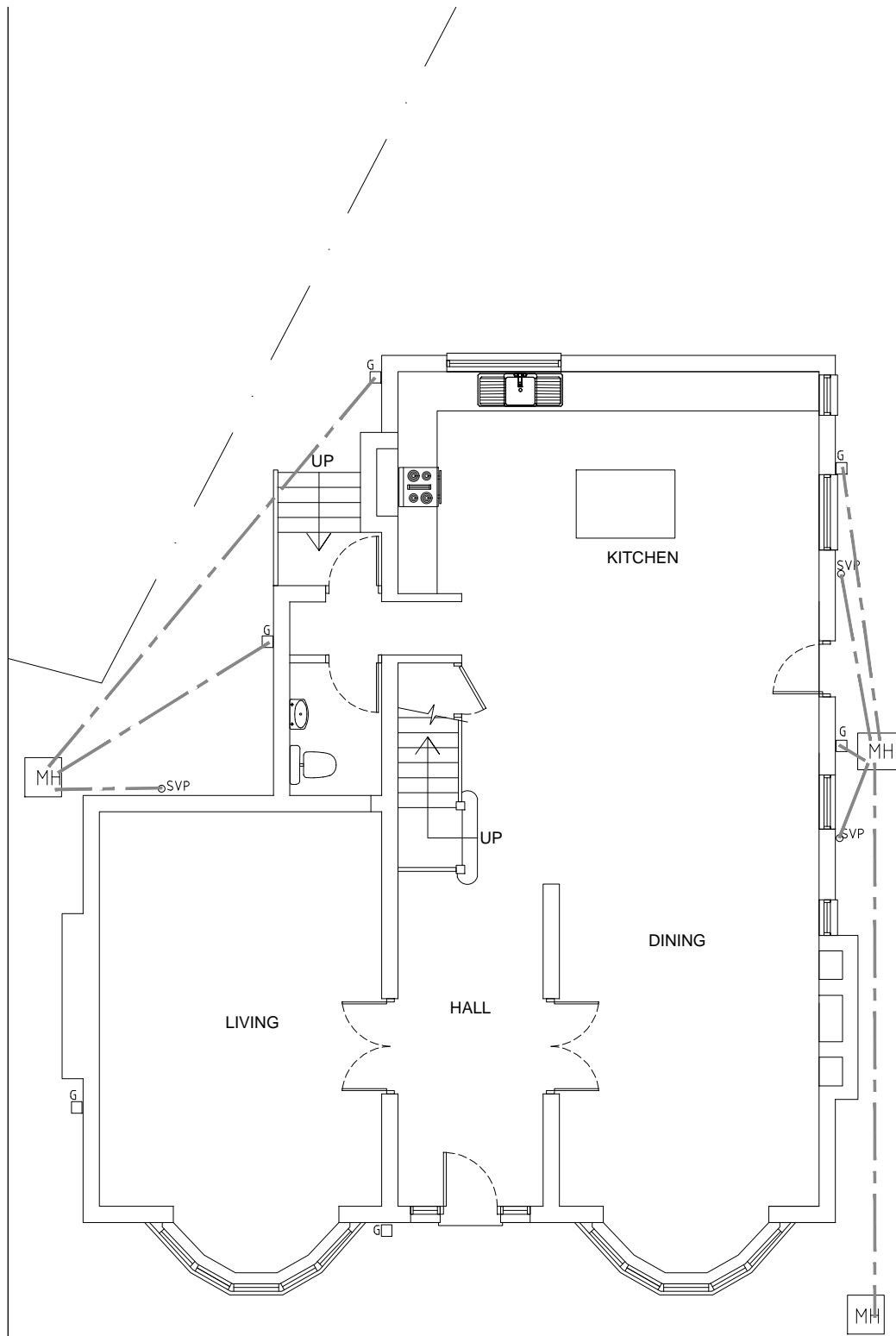


Revision A (March 2018): External changes to windows removed from plans

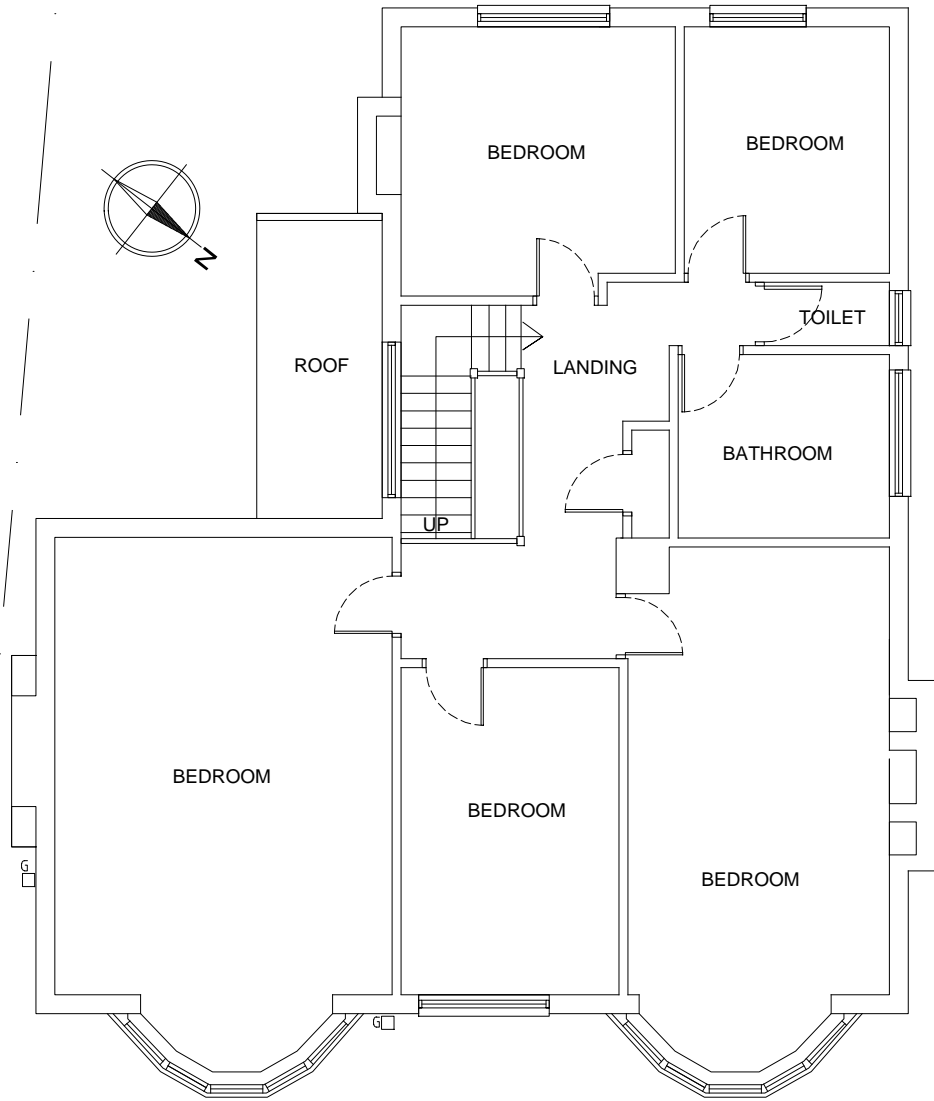
Rev.	Description	Date

Client	545 Finchley Road London, NW3 7BJ	Scale	1:100	Date	Oct 2017
Scheme	Conversion of existing HMO to a single dwellinghouse	Drawn by: HS Checked by: Approved by:		Rev.	A.
Title	Existing Elevations	Drawing No.	201710/545FR/02		

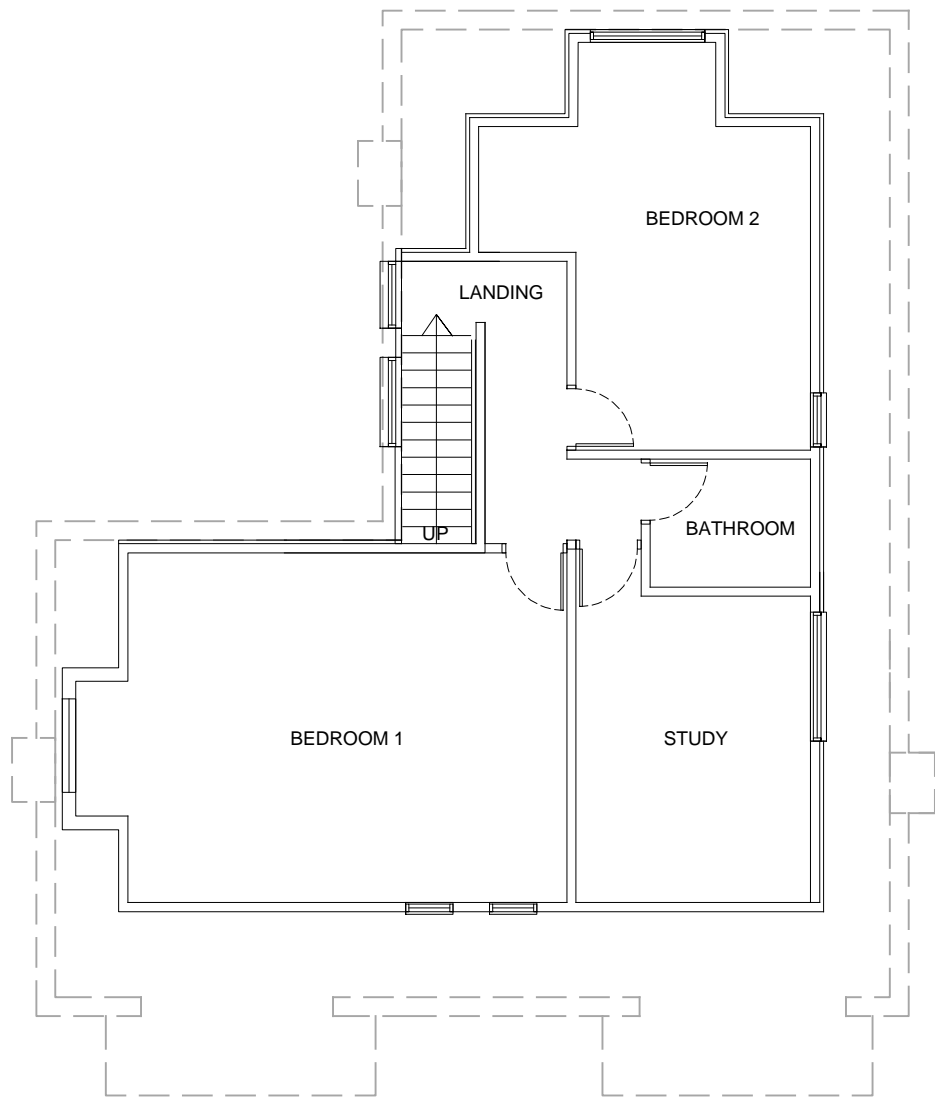
Homecraft Design Studios Homecraft Design Studios Group Ltd. 3 Pennine Parade, Pennine Drive London, NW2 1NT Mobile: 07958 501134 Email: h768@btinternet.com
---



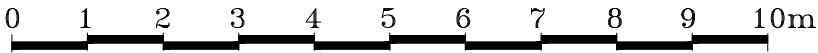
**PROPOSED GROUND FLOOR PLAN 1:100**



**PROPOSED FIRST FLOOR PLAN 1:100**



**PROPOSED LOFT FLOOR PLAN 1:100**



Revision A (March 2018): External changes to windows removed from plans				Client	545 Finchley Road London, NW3 7BJ	Scale	1:100	Date	Oct 2017	Homecraft Design Studios Homecraft Design Studios Group Ltd.  3 Pennine Parade, Pennine Drive London, NW2 1NT  Mobile: 07958 501134 Email: h768@btinternet.com
				Scheme	Conversion of existing HMO to a single dwellinghouse	Drawn by: HS Checked by: Approved by:		Rev.	A.	
				Title	Proposed Plans	Drawing No. 201710/545FR/03				
	Rev.	Description	Date							