

**SUPPLEMENTARY ARBORICULTURAL INFORMATION REVISION A MARCH 2018**

Date: 9th August 2017

Horse Chestnut T1 - street tree. 12metres high/ stem dia. 375mm/ RPA radius = 4.5 metres

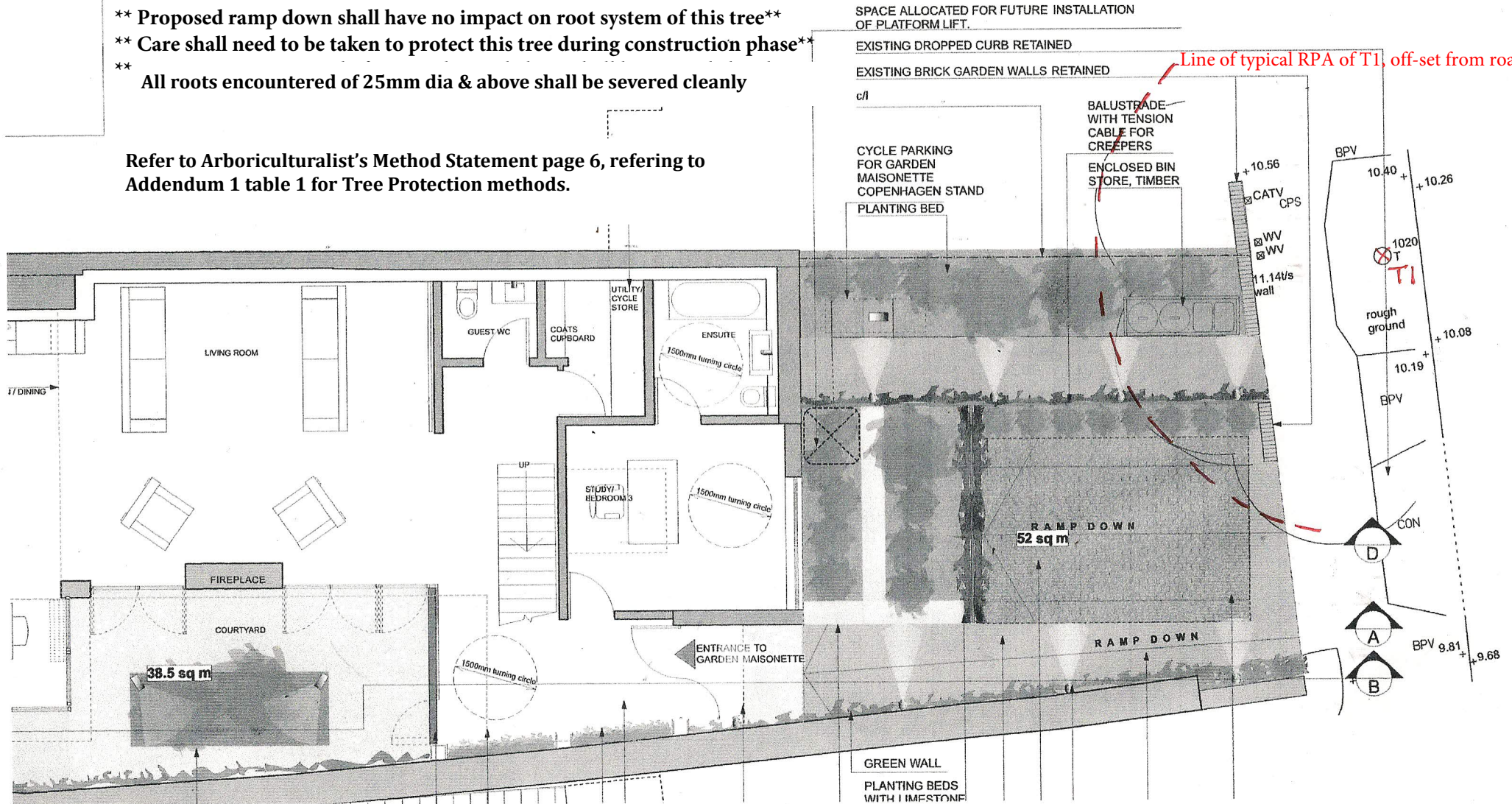
RPA = root protection area, off-set to allow for affect of road sub-base on root development

BS5837:2012 classification = B1

**PLEASE NOTE:**

- \*\* Proposed ramp down shall have no impact on root system of this tree\*\*
- \*\* Care shall need to be taken to protect this tree during construction phase\*\*
- \*\* All roots encountered of 25mm dia & above shall be severed cleanly

Refer to Arboriculturalist's Method Statement page 6, referring to Addendum 1 table 1 for Tree Protection methods.



SPACE ALLOCATED FOR FUTURE INSTALLATION OF PLATFORM LIFT.

EXISTING DROPPED CURB RETAINED

EXISTING BRICK GARDEN WALLS RETAINED

c/l

CYCLE PARKING FOR GARDEN MAISONETTE COPENHAGEN STAND PLANTING BED

BALUSTRADE WITH TENSION CABLE FOR CREEPERS

ENCLOSED BIN STORE, TIMBER

Line of typical RPA of T1, off-set from road by 15%

+10.56  
CATV CPS  
WV  
WV  
11.14Us wall

BPV 10.40 +10.26  
1020 T  
rough ground  
10.19 +10.08  
BPV

RAMP DOWN 52 sq m

RAMP DOWN

ENTRANCE TO GARDEN MAISONETTE

CON  
D  
A  
B  
BPV 9.81 +9.68

GREEN WALL  
PLANTING BEDS WITH LIMESTONE