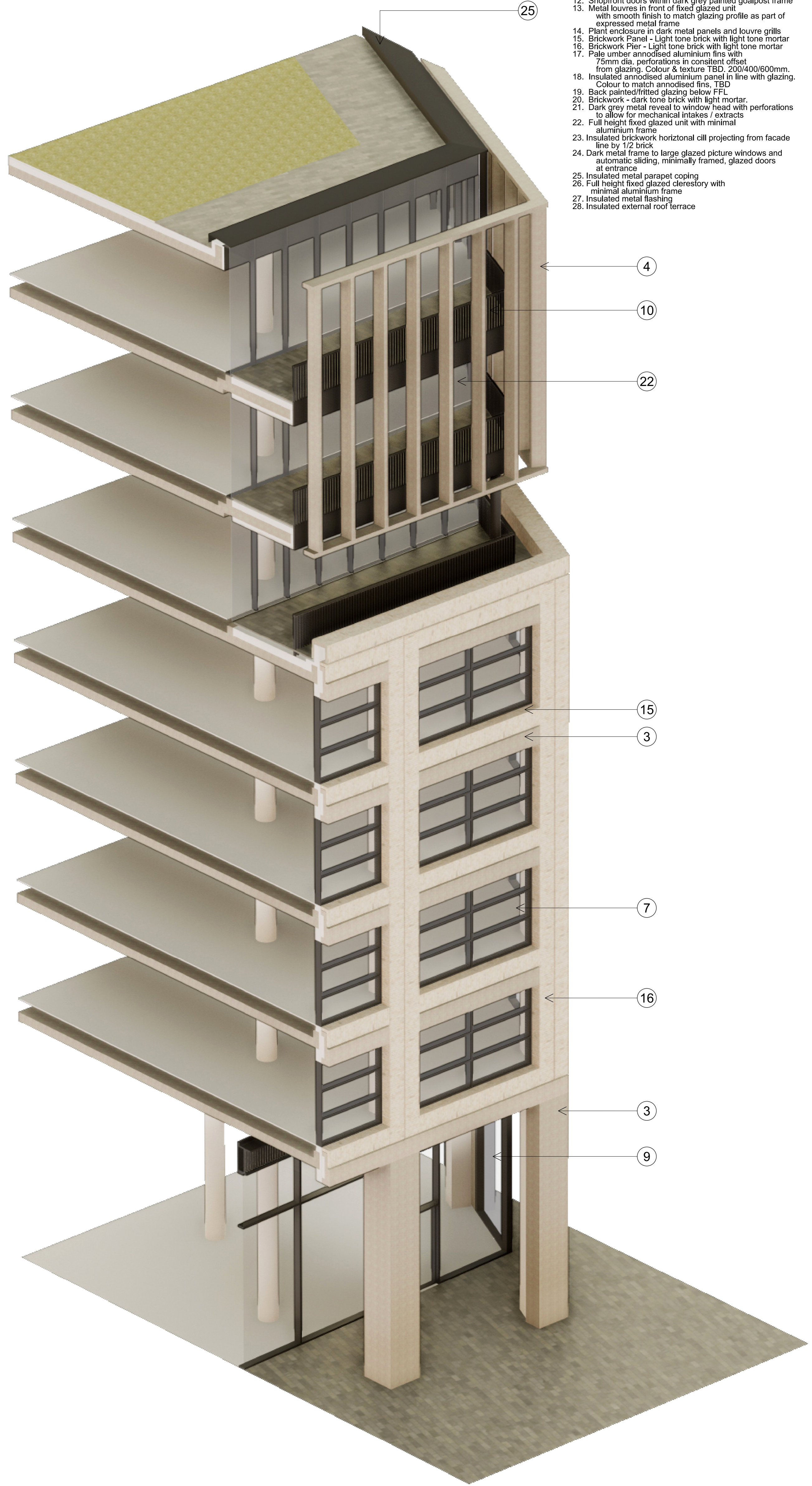


01 Detailed Section - Business / retail entrance, typical office floorplate, upper storey terraces



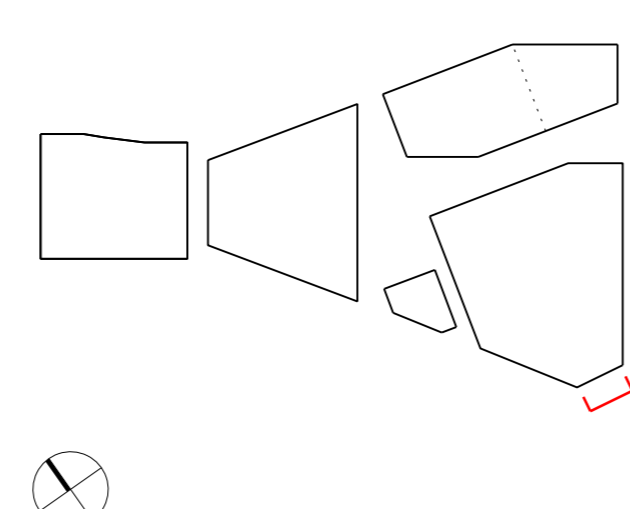
02 Axonometric - Business / retail entrance, typical office floorplate, upper storey terraces

1. Brickwork Panel - Midtone brown with light tone mortar
2. Brickwork Pier - Midtone brown with light tone mortar
3. Insulated precast concrete
4. Precast concrete fins
5. Metal louvres to retail unit with smooth finish to match glazing profile as part of expressed metal frame
6. Curtain wall glazing system
7. Fixed double glazed unit to offices with dark grey aluminium profile
8. Fixed double glazed unit and entrance to office within expressed dark grey goalpost frame.
9. Fixed double glazed shopfront unit and door to retail within expressed dark grey goalpost frame.
10. Metal balustrades painted dark grey to match glazing frame.
11. Office doors within dark grey painted goalpost frame
12. Shopfront doors within dark grey painted goalpost frame
13. Metal louvres in front of fixed glazed unit with smooth finish to match glazing profile as part of expressed metal frame
14. Plant enclosure in dark metal panels and louvre grills
15. Brickwork Panel - Light tone brick with light tone mortar
16. Brickwork Pier - Light tone brick with light tone mortar
17. Pale amber anodised aluminium fins with 75mm dia. perforations in consistent offset from glazing. Colour & texture TBD. 200/400/600mm.
18. Insulated anodised aluminium panel in line with glazing. Colour to match anodised fins. TBD
19. Back painted/fritted glazing below FFL
20. Brickwork - dark tone brick with light tone mortar
21. Dark grey metal reveal to window head with perforations to allow for mechanical intakes / extracts
22. Full height fixed glazed unit with minimal aluminium frame
23. Insulated brickwork horizontal cill projecting from facade line by 1/2 brick
24. Dark metal frame to large glazed picture windows and automatic sliding, minimally framed, glazed doors at entrance
25. Insulated metal parapet coping
26. Full height fixed glazed clerestory with minimal aluminium frame
27. Insulated metal flashing
28. Insulated external roof terrace

Revisions
180308 Issued for Planning

By: KC
Chk: JS

Notes



Bennetts Associates Architects
 1 Rawstorne Place London EC1V 7NL
 T +44 (0)20 7520 3300 F +44 (0)20 7520 3333
 E mail@bennettsassociates.com
For Bennetts Associates' electronic information issue disclaimer - www.bennettsassociates.com/information/disclaimer

Project	The Ugly Brown Building		Project No. 1603
Reef Estates			
Drawing Title	Drawing Number	Revision	
Building C3	1603_P_455	\	
Proposed Bay Study	Scale @ A3	Scale @ A1	Revision Date
South West Elevation	1 : 100	1 : 50	180308
Retail entrance, office, terraces & parapet			YY MM DD