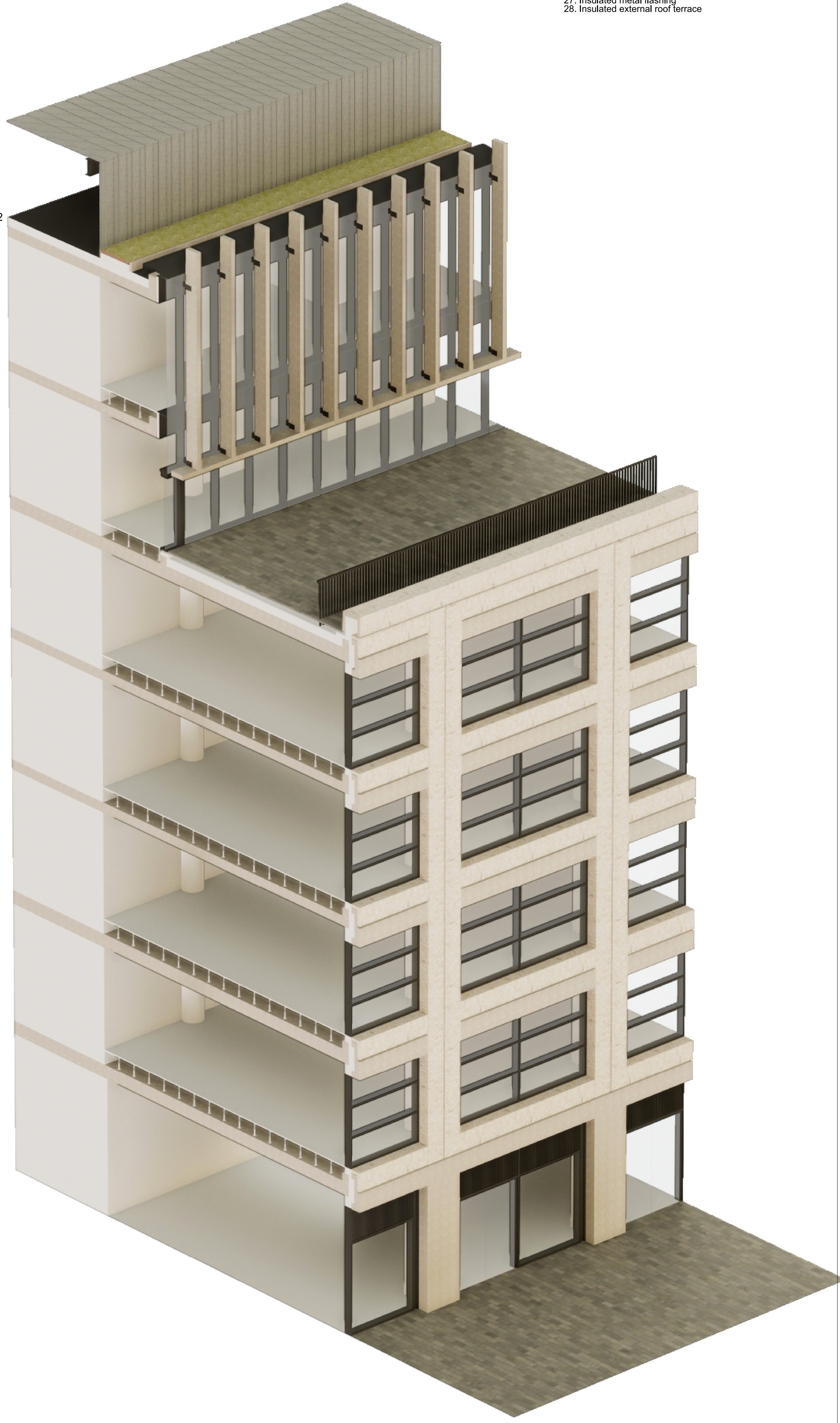


1. Brickwork Panel - Midtone brown with light tone mortar
2. Brickwork Pier - Midtone brown with light tone mortar
3. Insulated precast concrete
4. Precast concrete fins
5. Metal louvres to retail unit with smooth finish to match glazing profile as part of expressed metal frame
6. Curtain wall glazing system
7. Fixed double glazed unit to offices with dark grey aluminium profile
8. Fixed double glazed unit and entrance to office within expressed dark grey goalpost frame.
9. Fixed double glazed shopfront unit and door to retail within expressed dark grey goalpost frame.
10. Metal balustrades painted dark grey to match glazing frame.
11. Office doors within dark grey painted goalpost frame
12. Shopfront doors within dark grey painted goalpost frame
13. Metal louvres in front of fixed glazed unit with smooth finish to match glazing profile as part of expressed metal frame
14. Plant enclosure in dark metal panels and louvre grills
15. Brickwork Panel - Light tone brick with light tone mortar
16. Brickwork Pier - Light tone brick with light tone mortar
17. Pale amber anodised aluminium fins with 75mm dia. perforations in consistent offset from glazing. Colour & texture TBD. 200/400/600mm.
18. Insulated anodised aluminium panel in line with glazing. Colour to match anodised fins. TBD
19. Back painted/fritted glazing below FFL
20. Brickwork - dark tone brick with light mortar
21. Dark grey metal reveal to window head with perforations to allow for mechanical intakes / extracts
22. Full height fixed glazed unit with minimal aluminium frame
23. Insulated brickwork horizontal cill projecting from facade line by 1/2 brick
24. Dark metal frame to large glazed picture windows and automatic sliding, minimally framed, glazed doors at entrance
25. Insulated metal parapet coping
26. Full height fixed glazed clerestory with minimal aluminium frame
27. Insulated metal flashing
28. Insulated external roof terrace



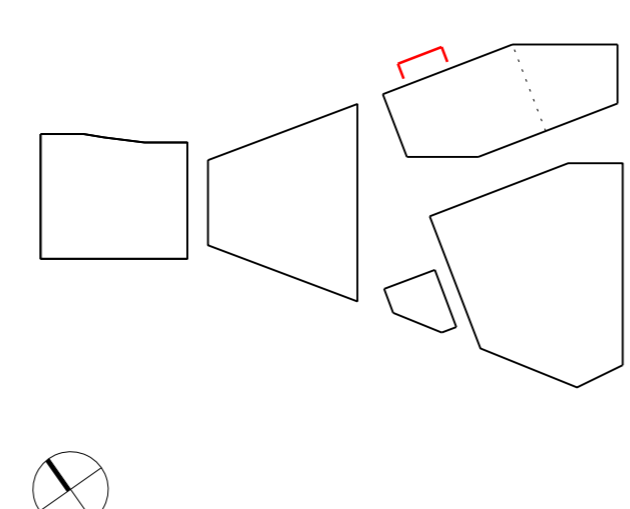
01 Detailed Section - Retail entrance, typical office, terrace, upper storey pavillion & plant screen

02 Axonometric - Retail entrance, typical office floorplate, terrace, upper storey expression & plant screen

Revisions
180308 Issued for Planning

By Chk
KC JS

Notes



Bennetts Associates Architects
1 Rawstorne Place London EC1V 7NL
T +44 (0)20 7520 3300 F +44 (0)20 7520 3333
E mail@bennettsassociates.com
For Bennetts Associates' electronic information issue disclaimer - www.bennettsassociates.com/informationaldisclaimer/

Project		Project No. 1603
The Ugly Brown Building		
Reef Estates		
Drawing Title	Drawing Number	Revision
Building C1	1603_P_452	\
Proposed Bay Study	Scale @ A3	Scale @A1
Regents canal walkway	1 : 100	1 : 50
Retail entrance, office, pavillion & parapet	Revision Date	
	180308	
	YY MM DD	