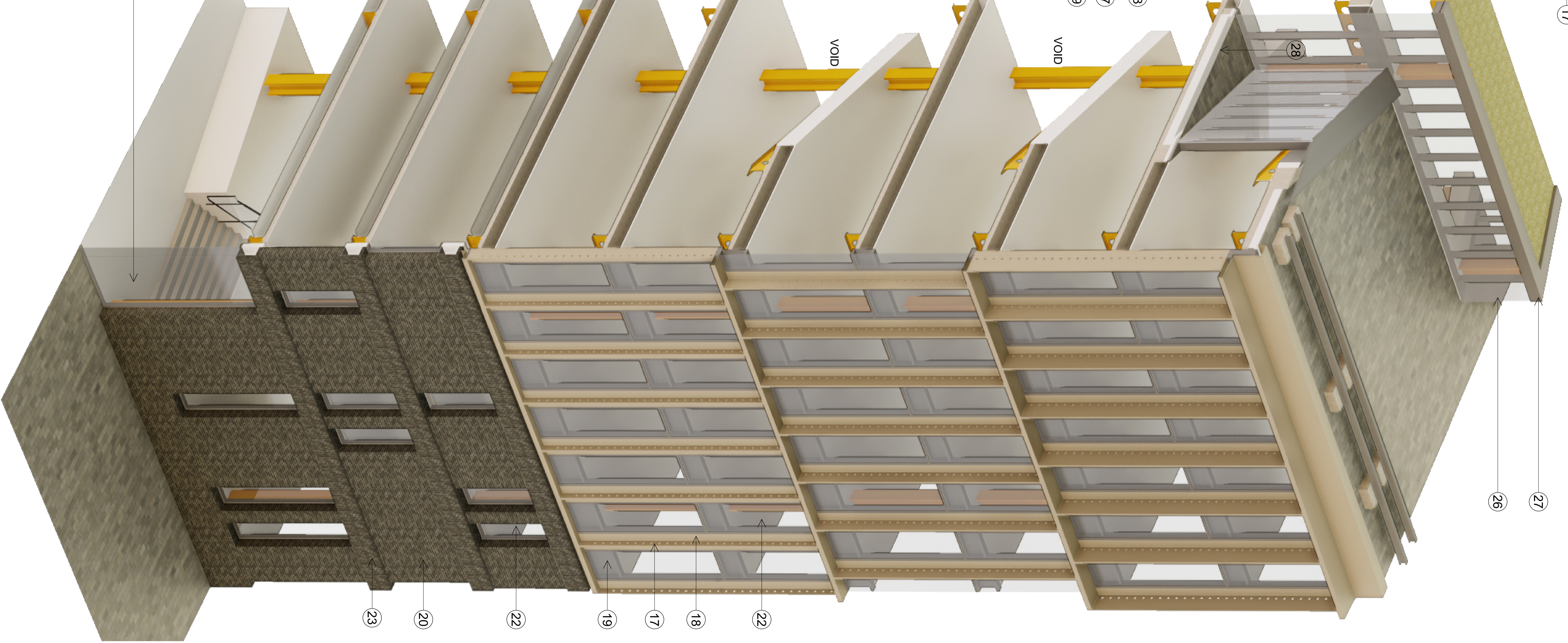


01 Detailed Section - South Elevation Hotel & Office floors with voids

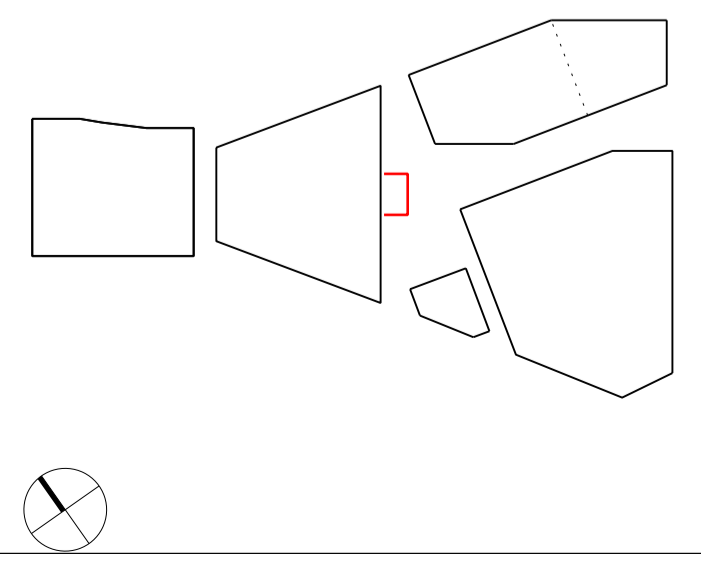


02 Axonometric - South Elevation Hotel & Office floors with voids

- 17. Pipe number anodised aluminium fins with 75mm dia perforations in consistent offset from glazing. Colour & texture TBD. 200/4/00/600mm.
- 18. Insulated metal parapet coping with 100mm FFL. Insulated metal parapet coping with 100mm FFL.
- 19. Back painted/primed glazing below FFL.
- 20. Brickwork - dark tone brick with light mortar.
- 21. Full height fixed glazed unit with minimal perforations to allow for mechanical intakes / extracts.
- 22. Full height fixed glazed unit with minimal perforations to allow for mechanical intakes / extracts.
- 23. Insulated brickwork horizontal sill projecting from facade line by 12 brick.
- 24. Dark metal frame to large glazed picture windows and entrance.
- 25. Insulated metal parapet coping.
- 26. Full height fixed glazed unit with minimal perforations to allow for mechanical intakes / extracts.
- 27. Insulated metal flashing.
- 28. Insulated external roof terrace.

Revisions	By	Chk
180308 Issued for Planning	JS	SE

By	Chk	Notes



Bennetts Associates Architects
 1 Rawstorne Place London EC1V 7NL
 T +44 (0)20 7520 3300 F +44 (0)20 7520 3333
 E mail@bennettsassociates.com

Project
The Ugly Brown Building
 Reef Estates

Drawing Title
Building B
 Proposed Bay Study
 South Elevation

Project No.	Revision	Revision Date
1603	1	180308

Drawing Number	Scale @ A3	Scale @ A1
1603_P_451	1 : 100	1 : 50