

Revisions	By	Chk
A 170601 Issued for Planning	JS	DK
B 170714 Issued for Planning	JS	DK
C 170810 Final comments from DP9 & Reef issued for Planning	AD	DK
C 180308 Issued for Planning	JS	SE

REGENTS CANAL

Notes

AFFORDABLE - SOCIAL

- 2 bed
- 3 bed

AFFORDABLE - INTERMEDIATE

- 1 bed
- 2 bed

PRIVATE

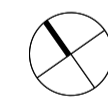
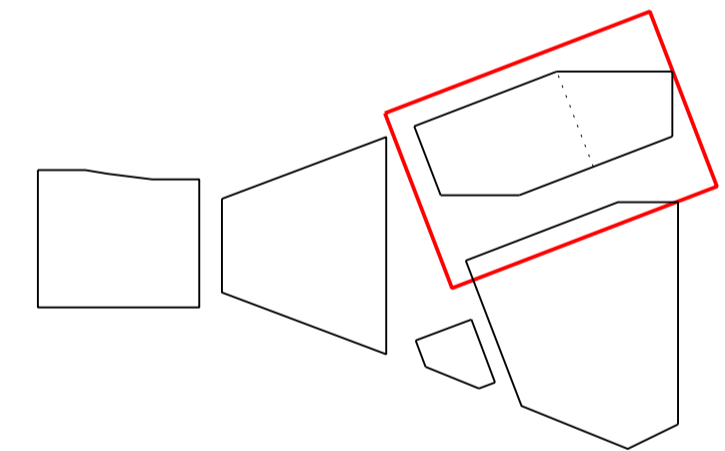
- Studio
- 1 bed
- 2 bed

ANNOTATIONS

- L Living Room
- K Kitchen
- MB Master Bedroom
- B Bedroom

All units designed to AD Part M Vol1 M4(2) 2015 Wheelchair Accessible & Adaptable Dwellings except where noted:

- WU AD Part M4(3) Wheelchair User Accessible Dwelling
- WA AD Part M4(3) Wheelchair Adaptable Dwelling



Bennetts Associates Architects

1 Rawstorne Place London EC1V 7NL
 T +44 (0)20 7520 3300 F +44 (0)20 7520 3333
 E mail@bennettsassociates.com

For Bennetts Associates' electronic information issue disclaimer - www.bennettsassociates.com/informationanddisclaimer/

Project 1603 Project No. 1603

The Ugly Brown Building
 Reef Estates

Drawing Title
 Proposed Residential Tenure Plan
 Level 00 Ground Floor

Drawing Number
 1603_P_130

Revision
 C

Scale @ A3
 1:250

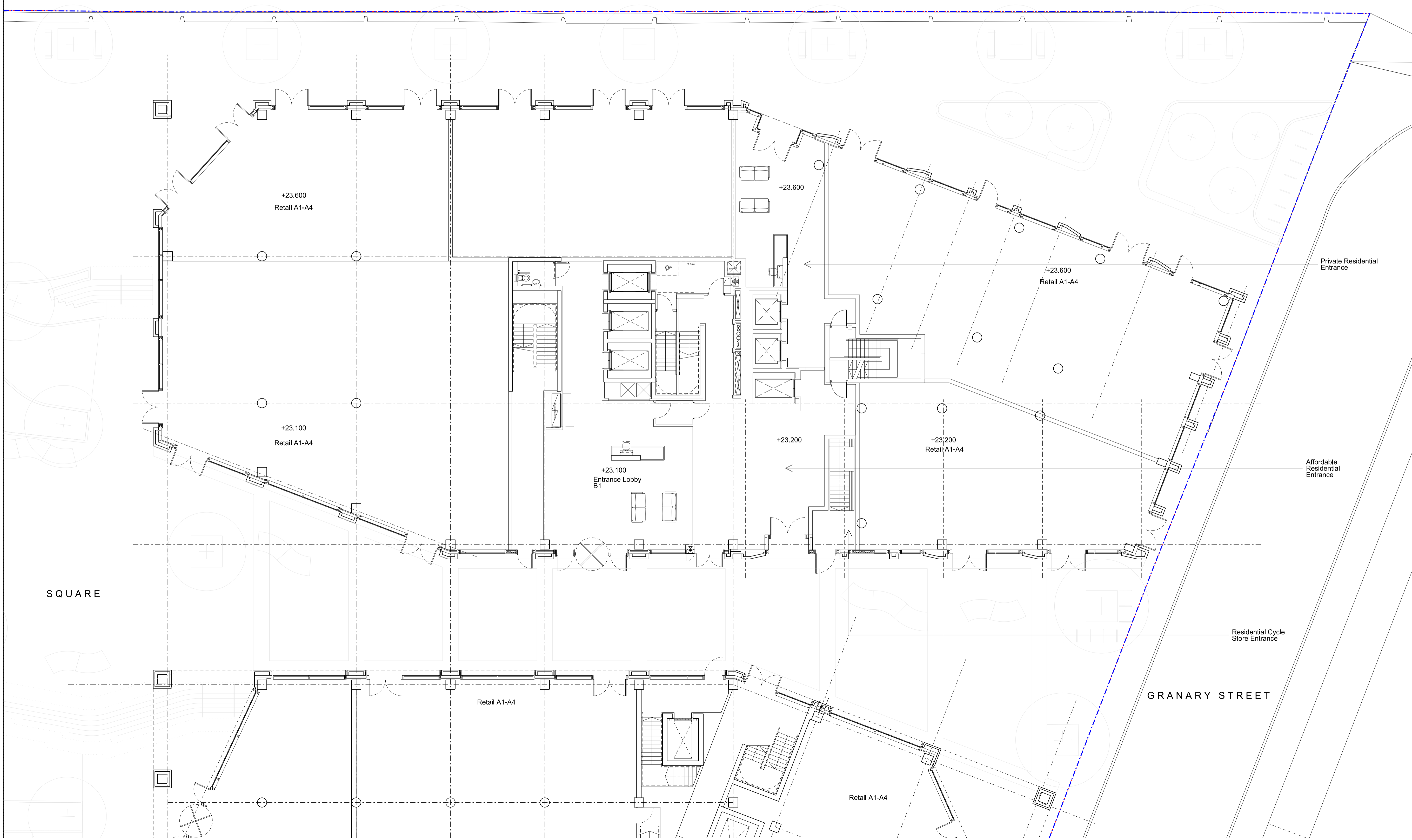
Scale @A1
 1:125

Revision Date
 180308

YY MM DD

SQUARE

GRANARY STREET



+23.600
Retail A1-A4

+23.600

+23.600
Retail A1-A4

+23.100
Retail A1-A4

+23.200

+23.200
Retail A1-A4

+23.100
Entrance Lobby
B1

Private Residential
Entrance

Affordable
Residential
Entrance

Residential Cycle
Store Entrance

Retail A1-A4

Retail A1-A4

Revisions	By	Chk
A 170601 Issued for Planning	JS	DK
B 170714 Issued for Planning	JS	DK
C 170810 Final comments from DP9 & Reef issued for Planning	AD	DK
C 180308 Issued for Planning	JS	SE

Notes

AFFORDABLE - SOCIAL

- 2 bed
- 3 bed

AFFORDABLE - INTERMEDIATE

- 1 bed
- 2 bed

PRIVATE

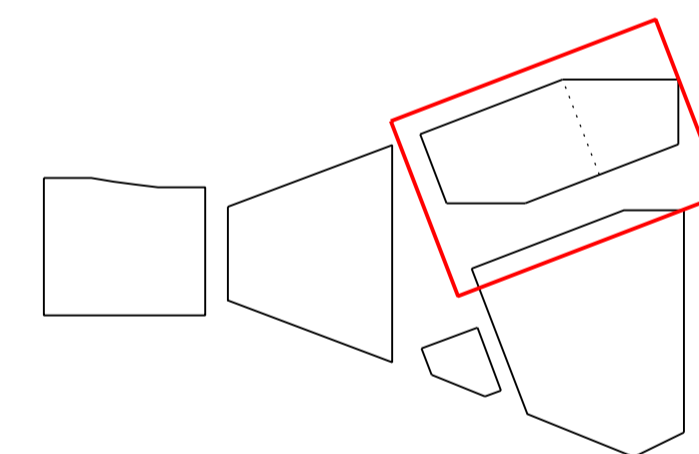
- Studio
- 1 bed
- 2 bed

ANNOTATIONS

- L Living Room
- K Kitchen
- MB Master Bedroom
- B Bedroom

All units designed to AD Part M Vol1, M4(2) 2015 Wheelchair Accessible & Adaptable Dwellings except where noted:

- WU AD Part M4(3) Wheelchair User Accessible Dwelling
- WA AD Part M4(3) Wheelchair Adaptable Dwelling



Bennetts Associates Architects

1 Rawstorne Place London EC1V 7NL
T +44 (0)20 7520 3300 F +44 (0)20 7520 3333
E mail@bennettsassociates.com

For Bennetts Associates' electronic information issue disclaimer - www.bennettsassociates.com/informationanddisclaimer/

Project **The Ugly Brown Building** Project No. 1603
Reef Estates

Drawing Title
Proposed Residential Tenure Plan
Residential Level 01

Drawing Number 1603_P_131 Revision C

Scale @ A3 1:250 Scale @A1 1:125 Revision Date 180308
YY MM DD



Revisions	By	Chk
A 170601 Issued for Planning	JS	DK
B 170714 Issued for Planning	JS	DK
C 170810 Final comments from DP9 & Reef issued for Planning	AD	DK
C 180308 Issued for Planning	JS	SE

Notes

AFFORDABLE - SOCIAL

- 2 bed
- 3 bed

AFFORDABLE - INTERMEDIATE

- 1 bed
- 2 bed

PRIVATE

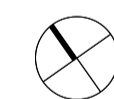
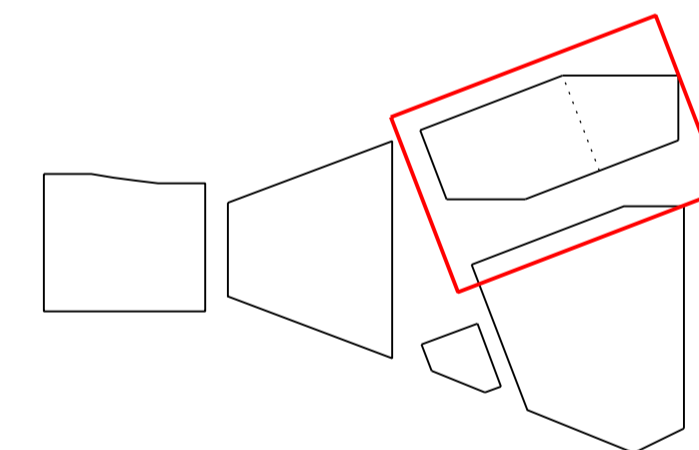
- Studio
- 1 bed
- 2 bed

ANNOTATIONS

- L Living Room
- K Kitchen
- MB Master Bedroom
- B Bedroom

All units designed to AD Part M Vol1, M4(2) 2015 Wheelchair Accessible & Adaptable Dwellings except where noted:

- WU AD Part M4(3) Wheelchair User Accessible Dwelling
- WA AD Part M4(3) Wheelchair Adaptable Dwelling



Bennetts Associates Architects

1 Rawstorne Place London EC1V 7NL
 T +44 (0)20 7520 3300 F +44 (0)20 7520 3333
 E mail@bennettsassociates.com

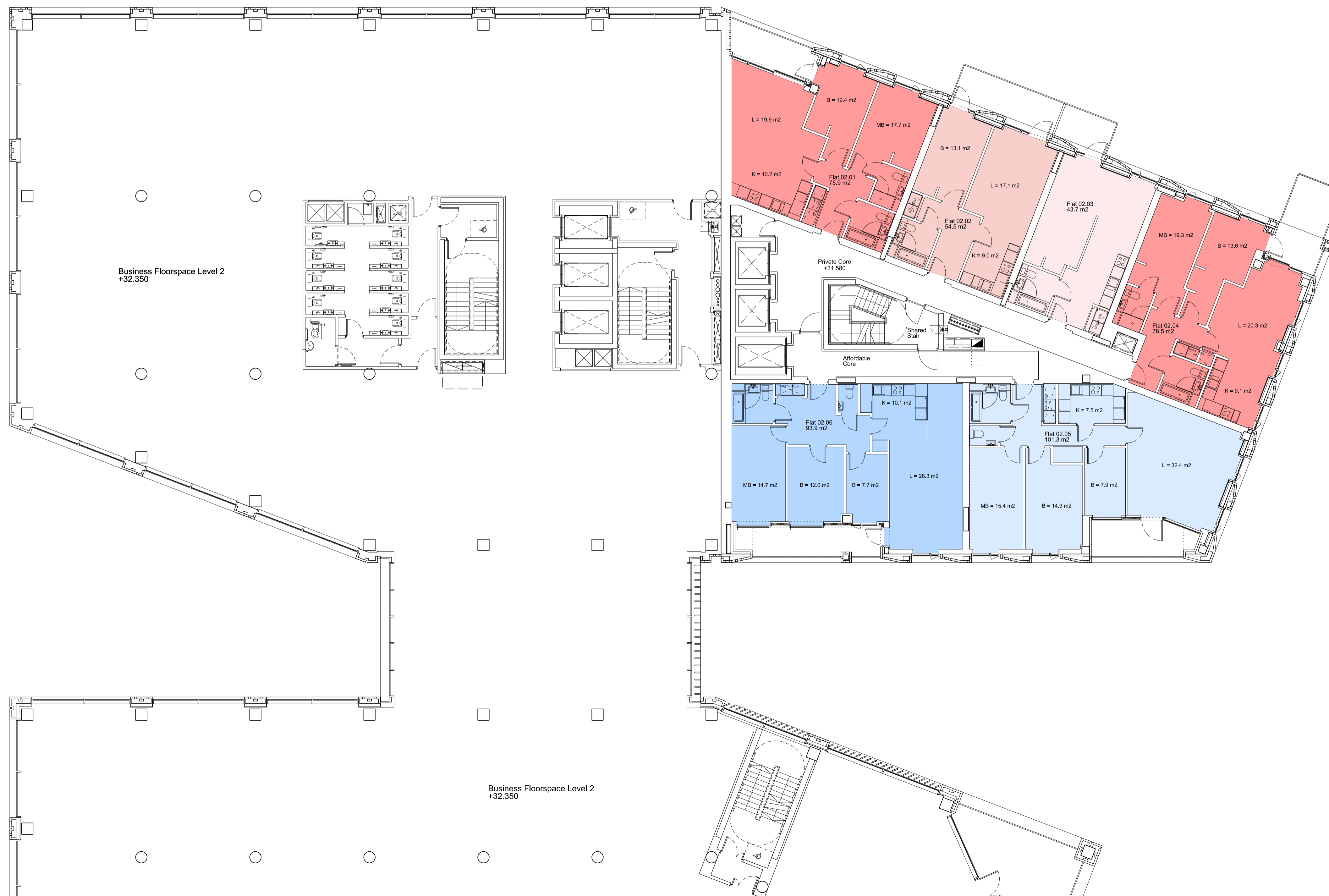
For Bennetts Associates' electronic information issue disclaimer -
www.bennettsassociates.com/informationanddisclaimer/

Project Project No. 1603
The Ugly Brown Building
 Reef Estates

Drawing Title
Proposed Residential Tenure Plan
 Residential Level 02

Drawing Number Revision
 1603_P_132 C

Scale @ A3 Scale @A1 Revision Date
 1:250 1:125 180308
 YY MM DD



Revisions	By	Chk
A 170601 Issued for Planning	JS	DK
B 170714 Issued for Planning	JS	DK
C 170810 Final comments from DP9 & Reef issued for Planning	AD	DK
C 180308 Issued for Planning	JS	SE

Notes

AFFORDABLE - SOCIAL

- 2 bed
- 3 bed

AFFORDABLE - INTERMEDIATE

- 1 bed
- 2 bed

PRIVATE

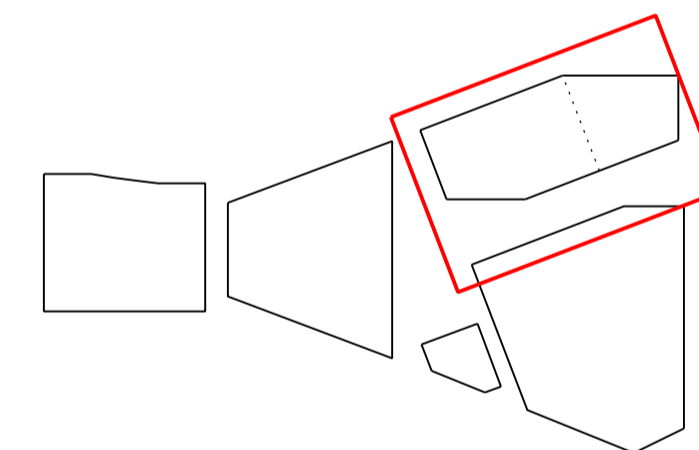
- Studio
- 1 bed
- 2 bed

ANNOTATIONS

- L Living Room
- K Kitchen
- MB Master Bedroom
- B Bedroom

All units designed to AD Part M Vol1, M4(2) 2015 Wheelchair Accessible & Adaptable Dwellings except where noted:

- WU AD Part M4(3) Wheelchair User Accessible Dwelling
- WA AD Part M4(3) Wheelchair Adaptable Dwelling



Bennetts Associates Architects

1 Rawstorne Place London EC1V 7NL
T +44 (0)20 7520 3300 F +44 (0)20 7520 3333
E mail@bennettsassociates.com

For Bennetts Associates' electronic information issue disclaimer -
www.bennettsassociates.com/informationanddisclaimer/

Project Project No. 1603
The Ugly Brown Building
Reef Estates

Drawing Title
Proposed Residential Tenure Plan
Residential Level 03

Drawing Number Revision
1603_P_133 C

Scale @ A3 Scale @A1 Revision Date
1:250 1:125 180308
YY MM DD



Revisions	By	Chk
A 170601 Issued for Planning	JS	DK
B 170714 Issued for Planning	JS	DK
C 170810 Final comments from DP9 & Reef issued for Planning	AD	DK
C 180308 Issued for Planning	JS	SE

Notes

AFFORDABLE - SOCIAL

- 2 bed
- 3 bed

AFFORDABLE - INTERMEDIATE

- 1 bed
- 2 bed

PRIVATE

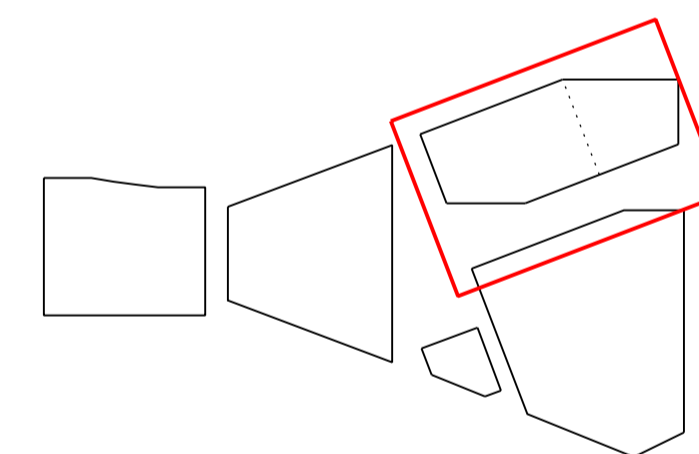
- Studio
- 1 bed
- 2 bed

ANNOTATIONS

- L Living Room
- K Kitchen
- MB Master Bedroom
- B Bedroom

All units designed to AD Part M Vol1, M4(2) 2015 Wheelchair Accessible & Adaptable Dwellings except where noted:

- WU AD Part M4(3) Wheelchair User Accessible Dwelling
- WA AD Part M4(3) Wheelchair Adaptable Dwelling



Bennetts Associates Architects

1 Rawstorne Place London EC1V 7NL
 T +44 (0)20 7520 3300 F +44 (0)20 7520 3333
 E mail@bennettsassociates.com

For Bennetts Associates' electronic information issue disclaimer -
www.bennettsassociates.com/informationanddisclaimer/

Project Project No. 1603
The Ugly Brown Building
 Reef Estates

Drawing Title
Proposed Residential Tenure Plan
 Residential Level 04

Drawing Number Revision
 1603_P_134 C

Scale @ A3 Scale @A1 Revision Date
 1:250 1:125 180308
 YY MM DD



Revisions	By	Chk
A 170601 Issued for Planning	JS	DK
B 170714 Issued for Planning	JS	DK
C 170810 Final comments from DP9 & Reef issued for Planning	AD	DK
C 180308 Issued for Planning	JS	SE

Notes

AFFORDABLE - SOCIAL

- 2 bed
- 3 bed

AFFORDABLE - INTERMEDIATE

- 1 bed
- 2 bed

PRIVATE

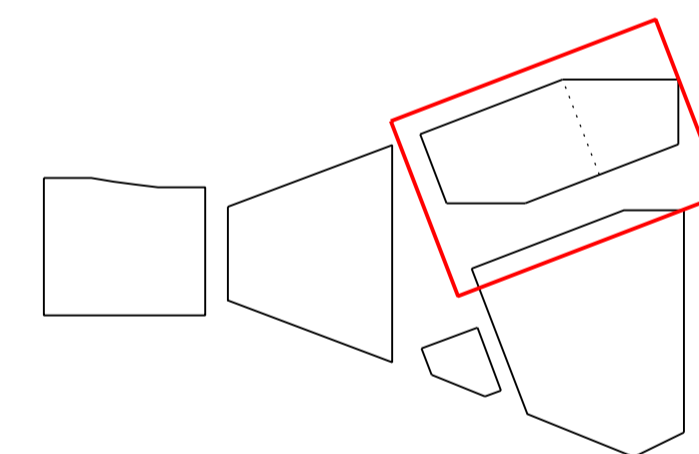
- Studio
- 1 bed
- 2 bed

ANNOTATIONS

- L Living Room
- K Kitchen
- MB Master Bedroom
- B Bedroom

All units designed to AD Part M Vol1, M4(2) 2015 Wheelchair Accessible & Adaptable Dwellings except where noted:

- WU AD Part M4(3) Wheelchair User Accessible Dwelling
- WA AD Part M4(3) Wheelchair Adaptable Dwelling



Bennetts Associates Architects

1 Rawstorne Place London EC1V 7NL
 T +44 (0)20 7520 3300 F +44 (0)20 7520 3333
 E mail@bennettsassociates.com

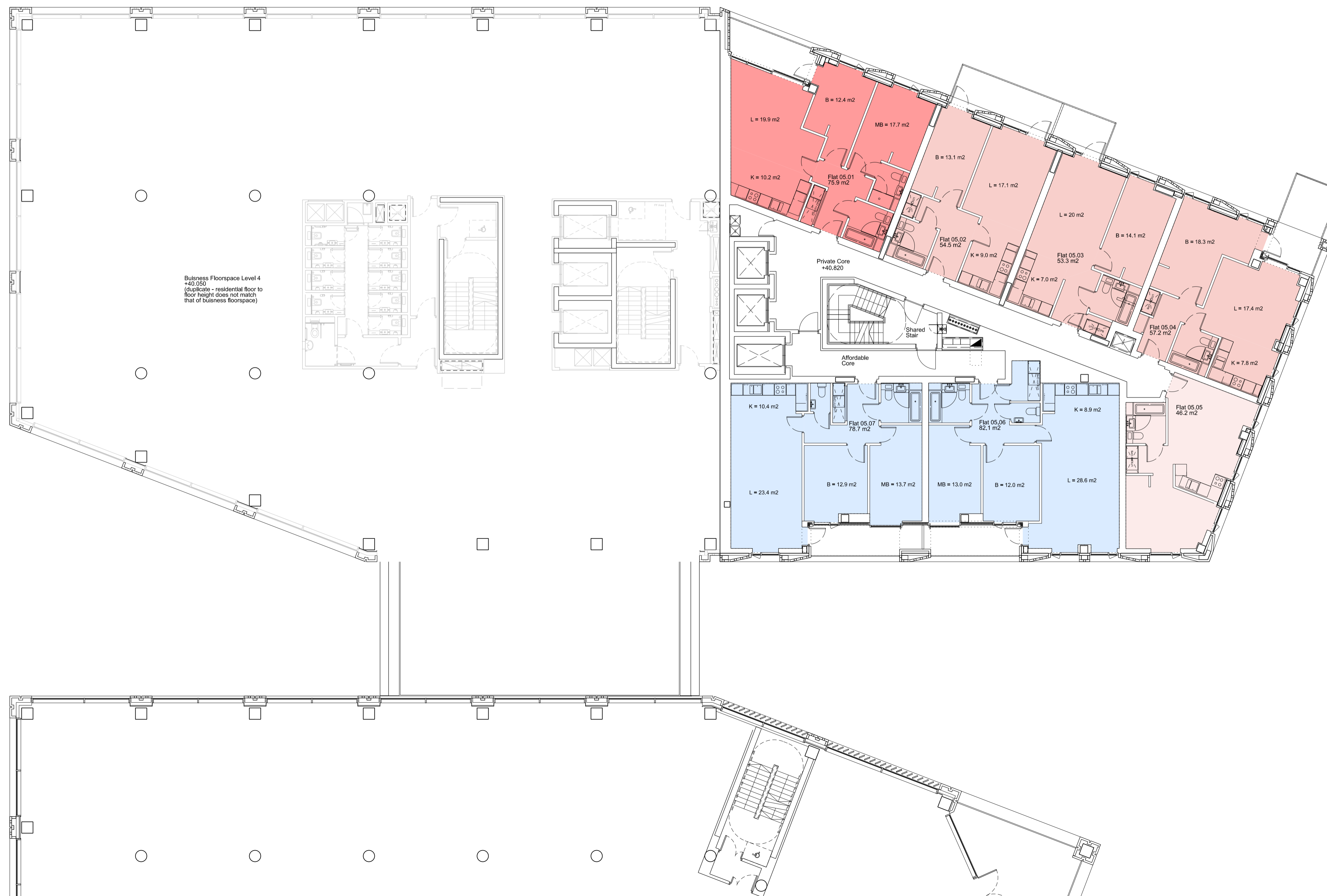
For Bennetts Associates' electronic information issue disclaimer -
www.bennettsassociates.com/informationanddisclaimer/

Project Project No. 1603
The Ugly Brown Building
 Reef Estates

Drawing Title
Proposed Residential Tenure Plan
Residential Level 05

Drawing Number Revision
1603_P_135 **C**

Scale @ A3 Scale @A1 Revision Date
1:250 **1:125** **180308**
 YY MM DD



Revisions	By	Chk
A 170601 Issued for Planning	JS	DK
B 170714 Issued for Planning	JS	DK
C 170810 Final comments from DP9 & Reef issued for Planning	AD	DK
C 180308 Issued for Planning	JS	SE

Notes

AFFORDABLE - SOCIAL

- 2 bed
- 3 bed

AFFORDABLE - INTERMEDIATE

- 1 bed
- 2 bed

PRIVATE

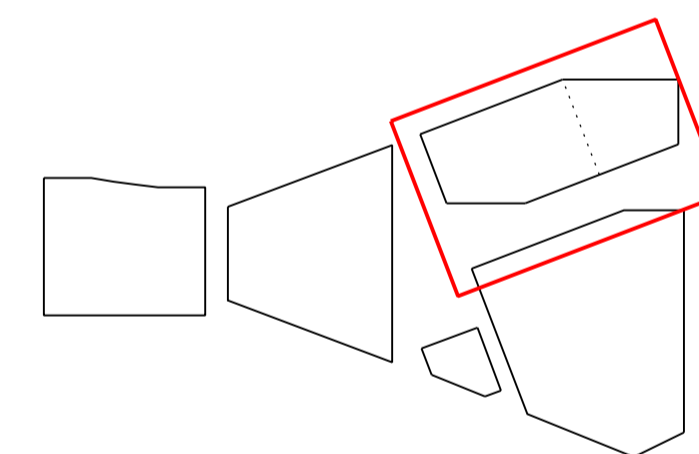
- Studio
- 1 bed
- 2 bed

ANNOTATIONS

- L Living Room
- K Kitchen
- MB Master Bedroom
- B Bedroom

All units designed to AD Part M Vol1, M4(2) 2015 Wheelchair Accessible & Adaptable Dwellings except where noted:

- WU AD Part M4(3) Wheelchair User Accessible Dwelling
- WA AD Part M4(3) Wheelchair Adaptable Dwelling



Bennetts Associates Architects

1 Rawstorne Place London EC1V 7NL
T +44 (0)20 7520 3300 F +44 (0)20 7520 3333
E mail@bennettsassociates.com

For Bennetts Associates' electronic information issue disclaimer -
www.bennettsassociates.com/informationanddisclaimer/

Project 1603 Project No. 1603

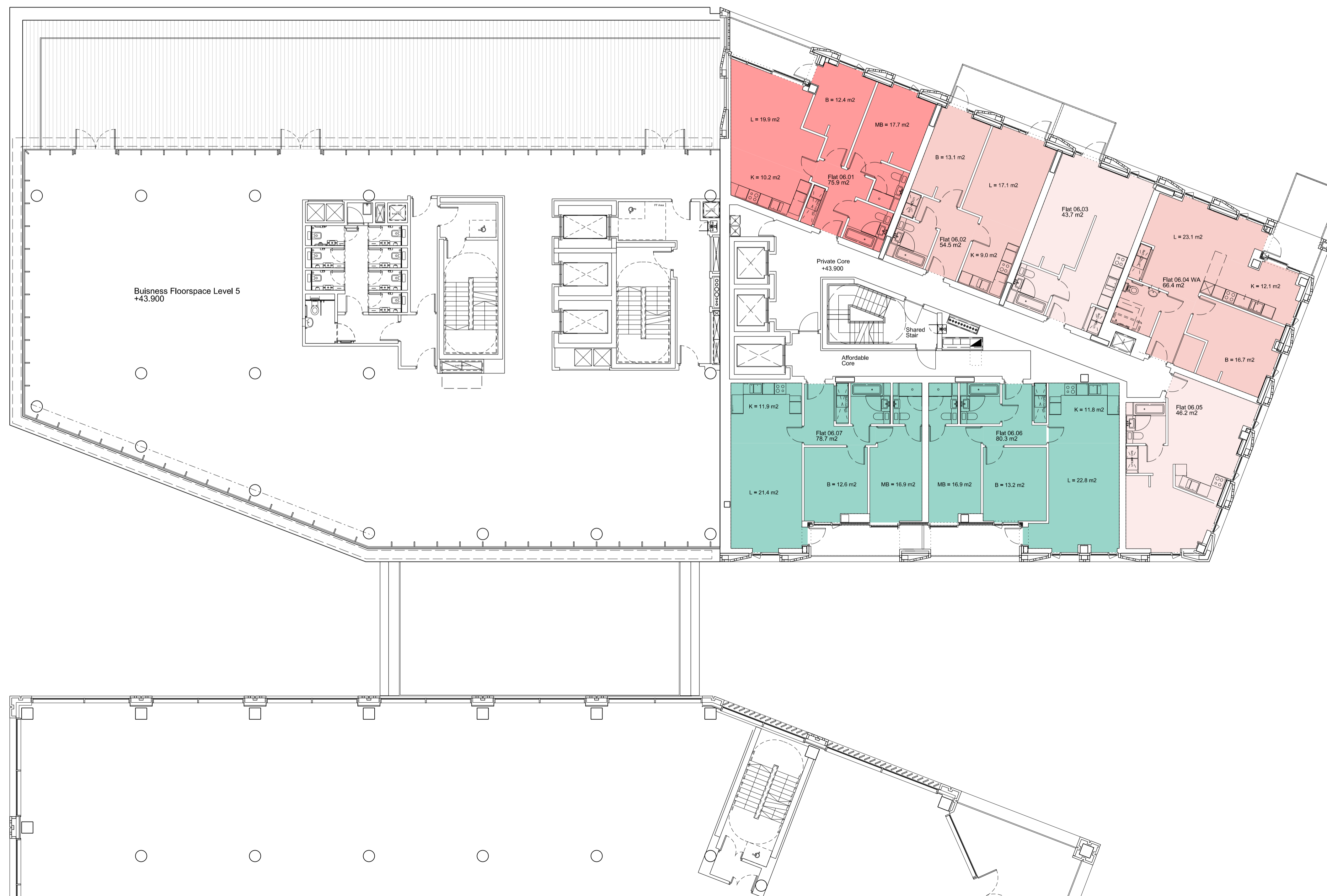
The Ugly Brown Building
Reef Estates

Drawing Title
Proposed Residential Tenure Plan
Residential Level 06

Drawing Number
1603_P_136

Revision
C

Scale @ A3 1:250 Scale @A1 1:125 Revision Date 180308
YY MM DD



Revisions	By	Chk
A 170601 Issued for Planning	JS	DK
B 170714 Issued for Planning	JS	DK
C 170810 Final comments from DP9 & Reef issued for Planning	AD	DK
C 180308 Issued for Planning	JS	SE

Notes

AFFORDABLE - SOCIAL

- 2 bed
- 3 bed

AFFORDABLE - INTERMEDIATE

- 1 bed
- 2 bed

PRIVATE

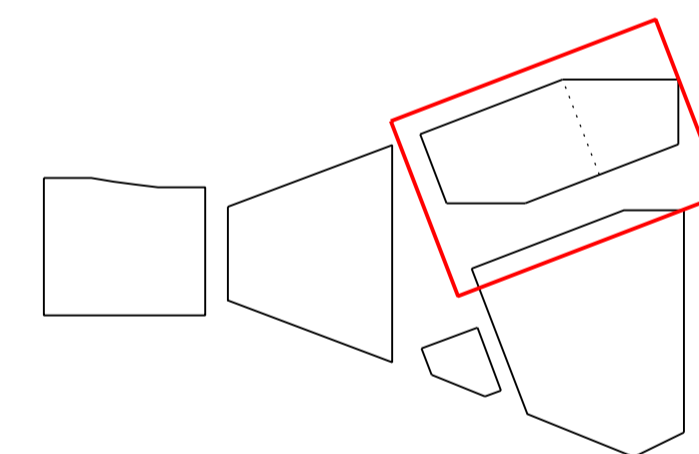
- Studio
- 1 bed
- 2 bed

ANNOTATIONS

- L Living Room
- K Kitchen
- MB Master Bedroom
- B Bedroom

All units designed to AD Part M Vol1, M4(2) 2015 Wheelchair Accessible & Adaptable Dwellings except where noted:

- WU AD Part M4(3) Wheelchair User Accessible Dwelling
- WA AD Part M4(3) Wheelchair Adaptable Dwelling



Bennetts Associates Architects

1 Rawstorne Place London EC1V 7NL
T +44 (0)20 7520 3300 F +44 (0)20 7520 3333
E mail@bennettsassociates.com

For Bennetts Associates' electronic information issue disclaimer -
www.bennettsassociates.com/informationanddisclaimer/

Project 1603 Project No. 1603

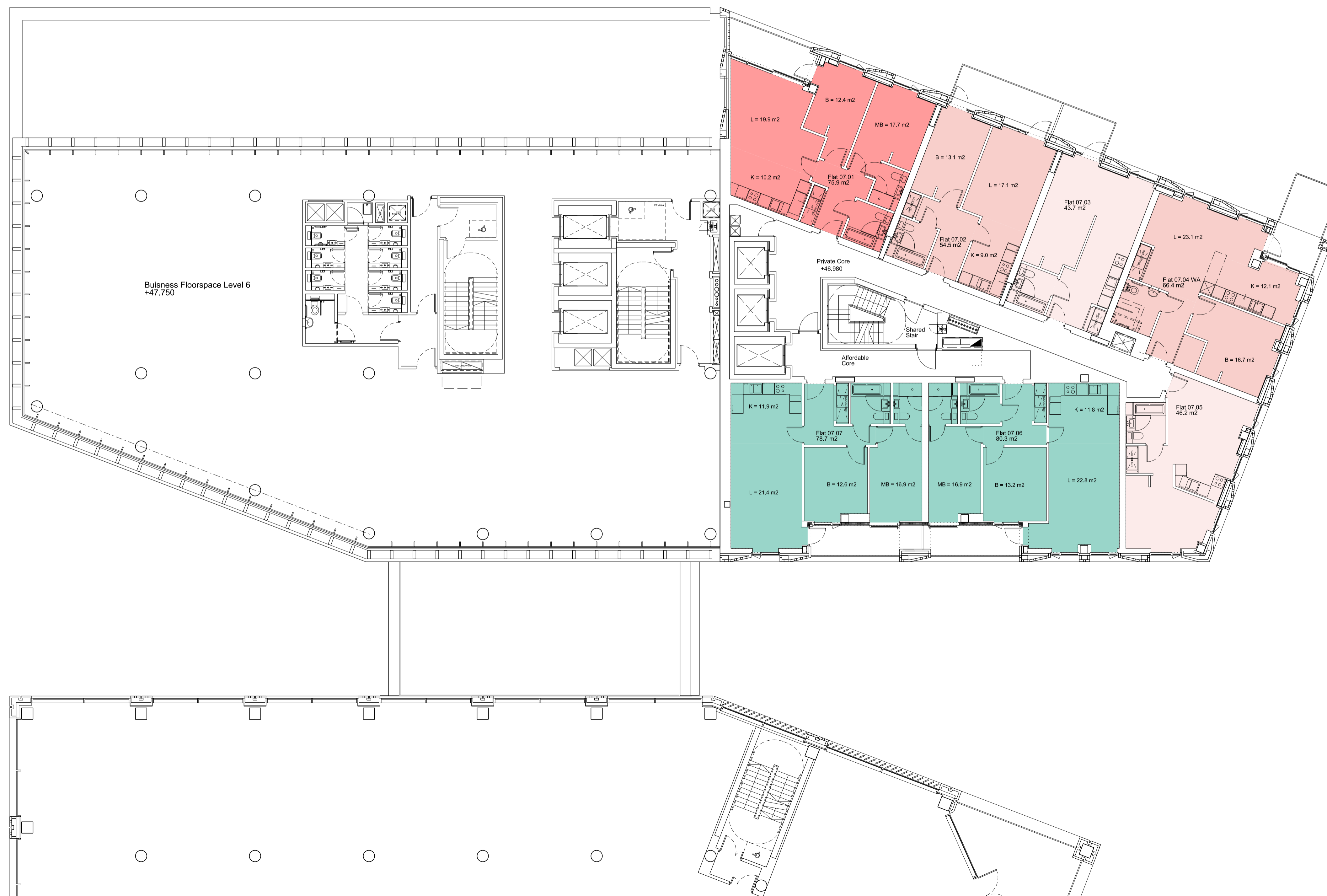
The Ugly Brown Building
Reef Estates

Drawing Title
Proposed Residential Tenure Plan
Residential Level 07

Drawing Number
1603_P_137

Revision
C

Scale @ A3 1:250 Scale @A1 1:125 Revision Date
180308
YY MM DD



Revisions	By	Chk
A 170601 Issued for Planning	JS	DK
B 170714 Issued for Planning	JS	DK
C 170810 Final comments from DP9 & Reef issued for Planning	AD	DK
C 180308 Issued for Planning	JS	SE

Notes

AFFORDABLE - SOCIAL

- 2 bed
- 3 bed

AFFORDABLE - INTERMEDIATE

- 1 bed
- 2 bed

PRIVATE

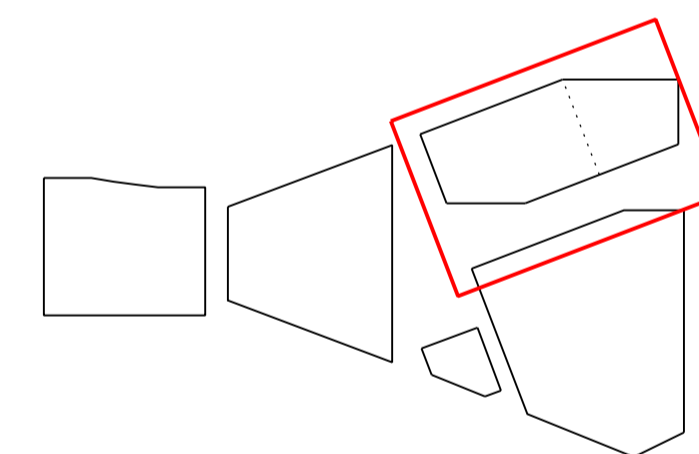
- Studio
- 1 bed
- 2 bed

ANNOTATIONS

- L Living Room
- K Kitchen
- MB Master Bedroom
- B Bedroom

All units designed to AD Part M Vol1, M4(2) 2015 Wheelchair Accessible & Adaptable Dwellings except where noted:

- WU AD Part M4(3) Wheelchair User Accessible Dwelling
- WA AD Part M4(3) Wheelchair Adaptable Dwelling



Bennetts Associates Architects

1 Rawstorne Place London EC1V 7NL
 T +44 (0)20 7520 3300 F +44 (0)20 7520 3333
 E mail@bennettsassociates.com

For Bennetts Associates' electronic information issue disclaimer - www.bennettsassociates.com/informationanddisclaimer/

Project Project No. 1603
The Ugly Brown Building
 Reef Estates

Drawing Title
Proposed Residential Tenure Plan
Residential Level 08

Drawing Number Revision
1603_P_138 **C**

Scale @ A3 Scale @A1 Revision Date
1:250 **1:125** **180308**
 YY MM DD



Notes

AFFORDABLE - SOCIAL

- 2 bed
- 3 bed

AFFORDABLE - INTERMEDIATE

- 1 bed
- 2 bed

PRIVATE

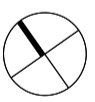
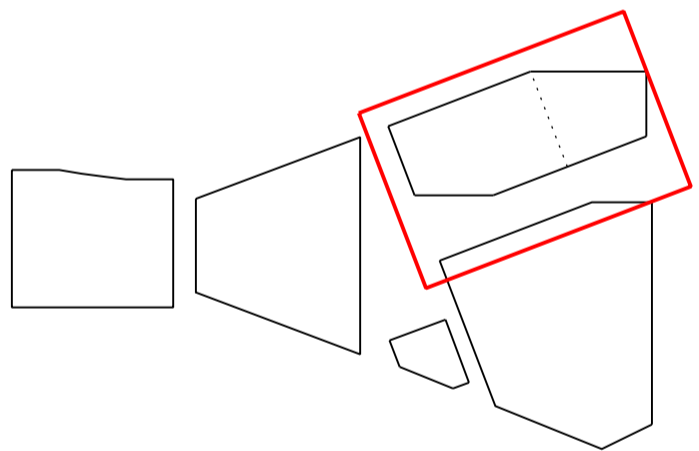
- Studio
- 1 bed
- 2 bed

ANNOTATIONS

- L Living Room
- K Kitchen
- MB Master Bedroom
- B Bedroom

All units designed to AD Part M Vol1, M4(2) 2015
 Wheelchair Accessible & Adaptable Dwellings
 except where noted:

- WU AD Part M4(3) Wheelchair User Accessible Dwelling
- WA AD Part M4(3) Wheelchair Adaptable Dwelling



Bennetts Associates Architects

1 Rawstorne Place London EC1V 7NL
 T +44 (0)20 7520 3300 F +44 (0)20 7520 3333
 E mail@bennettsassociates.com

For Bennetts Associates' electronic information issue disclaimer -
 www.bennettsassociates.com/informationanddisclaimer/

Project Project No. 1603

The Ugly Brown Building
 Reef Estates

Drawing Title
 Proposed Residential Tenure Plan
 Residential Level 09

Drawing Number Revision
 1603_P_139 B

Scale @ A3 Scale @A1 Revision Date
 1:250 1:125 180308
 YY MM DD

