

Revisions	By	Chk
A 170601 Issued for Planning	JS	DK
B 170714 Issued for Planning	JS	DK
C 170810 Final comments from DP9 & Reef issued for Planning	AD	DK
C 180308 Issued for Planning	JS	SE

REGENTS CANAL

Notes

AFFORDABLE - SOCIAL

- 2 bed
- 3 bed

AFFORDABLE - INTERMEDIATE

- 1 bed
- 2 bed

PRIVATE

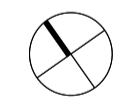
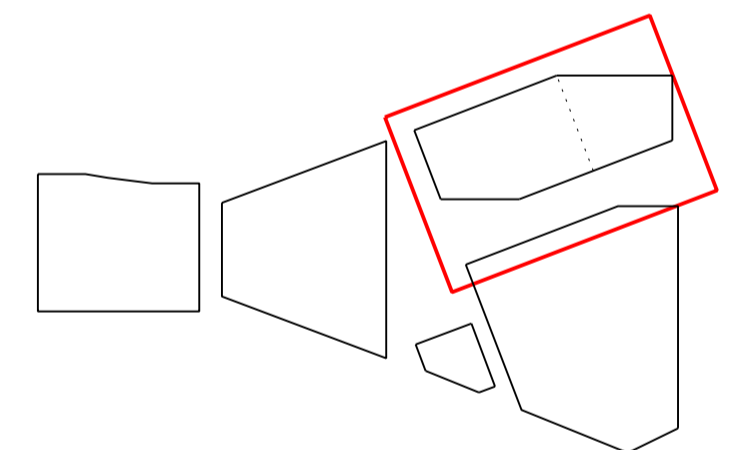
- Studio
- 1 bed
- 2 bed

ANNOTATIONS

- L Living Room
- K Kitchen
- MB Master Bedroom
- B Bedroom

All units designed to AD Part M Vol1, M4(2) 2015 Wheelchair Accessible & Adaptable Dwellings except where noted:

- WU AD Part M4(3) Wheelchair User Accessible Dwelling
- WA AD Part M4(3) Wheelchair Adaptable Dwelling



**Bennetts Associates Architects**

1 Rawstorne Place London EC1V 7NL  
T +44 (0)20 7520 3300 F +44 (0)20 7520 3333  
E mail@bennettsassociates.com

For Bennetts Associates' electronic information issue disclaimer - www.bennettsassociates.com/informationanddisclaimer/

Project 1603 Project No. 1603

**The Ugly Brown Building**  
Reef Estates

Drawing Title  
Proposed Residential Tenure Plan  
Level 00 Ground Floor

Drawing Number 1603\_P\_130 Revision C

Scale @ A3 1:250 Scale @A1 1:125 Revision Date 180308 YY MM DD

SQUARE

GRANARY STREET



Revisions	By	Chk
A 170601 Issued for Planning	JS	DK
B 170714 Issued for Planning	JS	DK
C 170810 Final comments from DP9 & Reef issued for Planning	AD	DK
C 180308 Issued for Planning	JS	SE

Notes

AFFORDABLE - SOCIAL

- 2 bed
- 3 bed

AFFORDABLE - INTERMEDIATE

- 1 bed
- 2 bed

PRIVATE

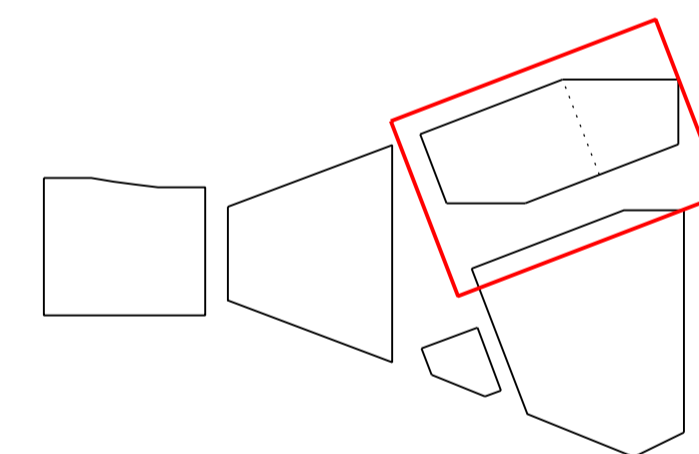
- Studio
- 1 bed
- 2 bed

ANNOTATIONS

- L Living Room
- K Kitchen
- MB Master Bedroom
- B Bedroom

All units designed to AD Part M Vol1, M4(2) 2015 Wheelchair Accessible & Adaptable Dwellings except where noted:

- WU AD Part M4(3) Wheelchair User Accessible Dwelling
- WA AD Part M4(3) Wheelchair Adaptable Dwelling



**Bennetts Associates Architects**

1 Rawstorne Place London EC1V 7NL  
T +44 (0)20 7520 3300 F +44 (0)20 7520 3333  
E mail@bennettsassociates.com

For Bennetts Associates' electronic information issue disclaimer - www.bennettsassociates.com/informationanddisclaimer/

Project **The Ugly Brown Building** Project No. 1603  
**Reef Estates**

Drawing Title  
**Proposed Residential Tenure Plan**  
**Residential Level 01**

Drawing Number **1603\_P\_131** Revision **C**

Scale @ A3 **1:250** Scale @A1 **1:125** Revision Date **180308**  
YY MM DD



Revisions	By	Chk
A 170601 Issued for Planning	JS	DK
B 170714 Issued for Planning	JS	DK
C 170810 Final comments from DP9 & Reef issued for Planning	AD	DK
C 180308 Issued for Planning	JS	SE

Notes

AFFORDABLE - SOCIAL

- 2 bed
- 3 bed

AFFORDABLE - INTERMEDIATE

- 1 bed
- 2 bed

PRIVATE

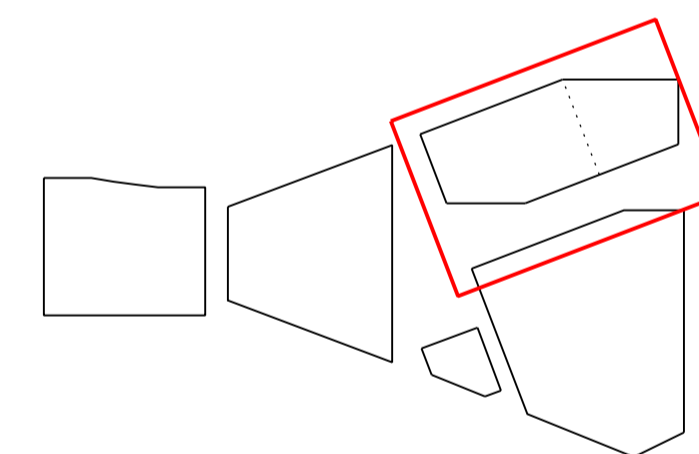
- Studio
- 1 bed
- 2 bed

ANNOTATIONS

- L Living Room
- K Kitchen
- MB Master Bedroom
- B Bedroom

All units designed to AD Part M Vol1, M4(2) 2015 Wheelchair Accessible & Adaptable Dwellings except where noted:

- WU AD Part M4(3) Wheelchair User Accessible Dwelling
- WA AD Part M4(3) Wheelchair Adaptable Dwelling



**Bennetts Associates Architects**

1 Rawstorne Place London EC1V 7NL  
T +44 (0)20 7520 3300 F +44 (0)20 7520 3333  
E mail@bennettsassociates.com

For Bennetts Associates' electronic information issue disclaimer - www.bennettsassociates.com/informationanddisclaimer/

Project **The Ugly Brown Building** Project No. 1603  
**Reef Estates**

Drawing Title  
**Proposed Residential Tenure Plan**  
**Residential Level 02**

Drawing Number **1603\_P\_132** Revision **C**

Scale @ A3 **1:250** Scale @A1 **1:125** Revision Date **180308**  
YY MM DD



Revisions	By	Chk
A 170601 Issued for Planning	JS	DK
B 170714 Issued for Planning	JS	DK
C 170810 Final comments from DP9 & Reef issued for Planning	AD	DK
C 180308 Issued for Planning	JS	SE

Notes

AFFORDABLE - SOCIAL

- 2 bed
- 3 bed

AFFORDABLE - INTERMEDIATE

- 1 bed
- 2 bed

PRIVATE

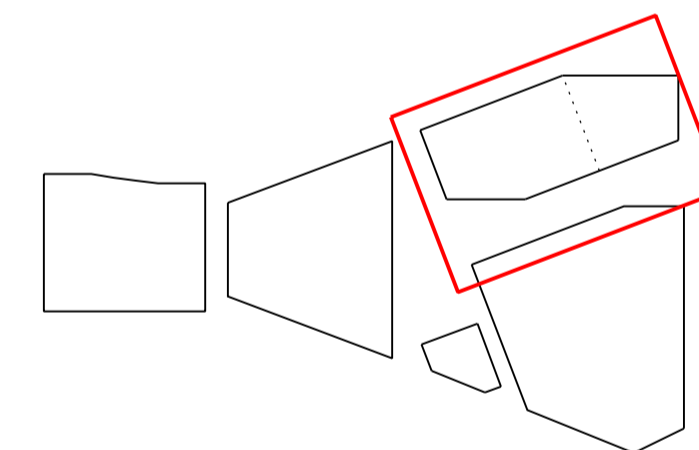
- Studio
- 1 bed
- 2 bed

ANNOTATIONS

- L Living Room
- K Kitchen
- MB Master Bedroom
- B Bedroom

All units designed to AD Part M Vol1, M4(2) 2015 Wheelchair Accessible & Adaptable Dwellings except where noted:

- WU AD Part M4(3) Wheelchair User Accessible Dwelling
- WA AD Part M4(3) Wheelchair Adaptable Dwelling



**Bennetts Associates Architects**

1 Rawstorne Place London EC1V 7NL  
T +44 (0)20 7520 3300 F +44 (0)20 7520 3333  
E mail@bennettsassociates.com

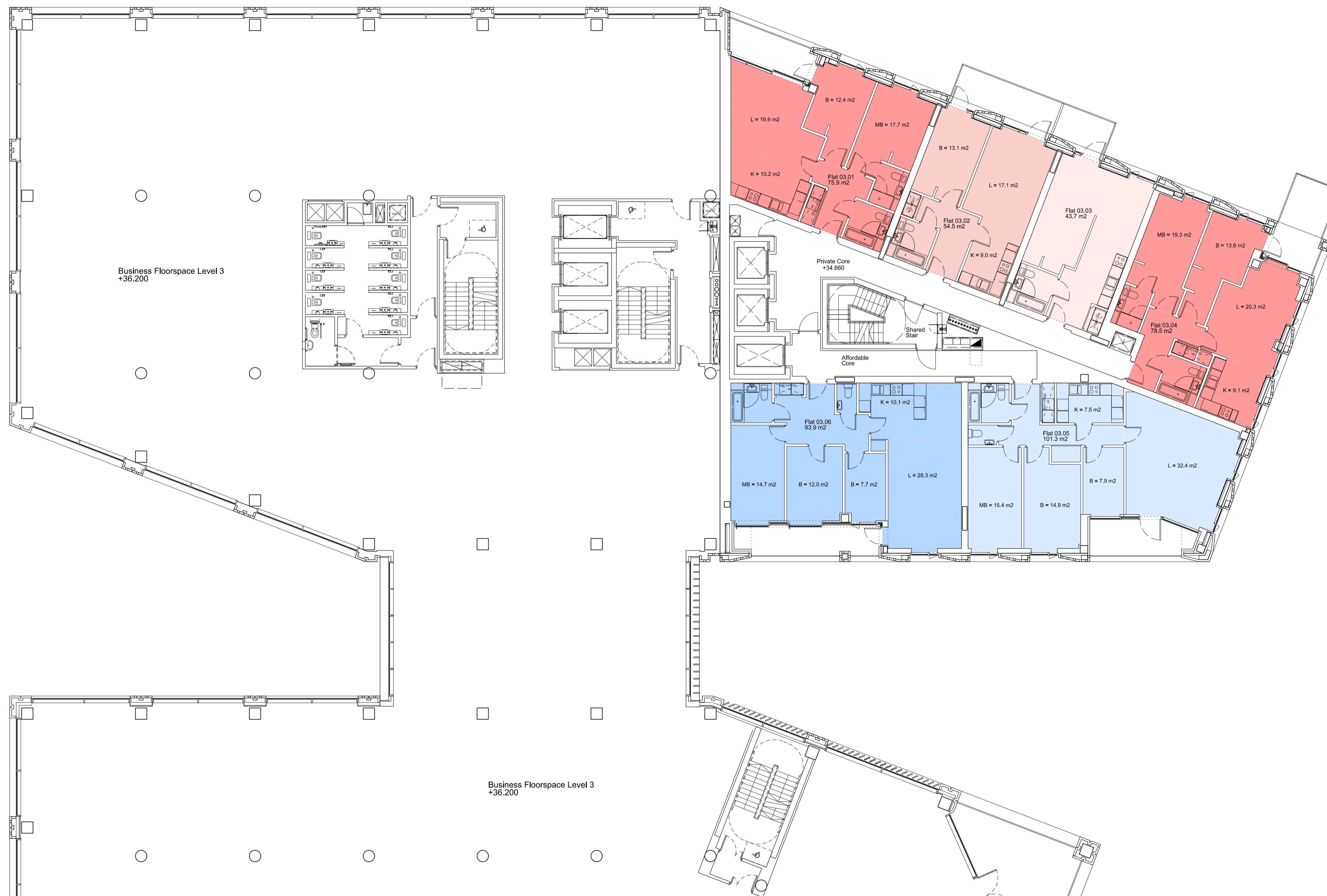
For Bennetts Associates' electronic information issue disclaimer - [www.bennettsassociates.com/informationanddisclaimer/](http://www.bennettsassociates.com/informationanddisclaimer/)

Project Project No. 1603  
**The Ugly Brown Building**  
Reef Estates

Drawing Title  
**Proposed Residential Tenure Plan**  
Residential Level 03

Drawing Number Revision  
**1603\_P\_133** C

Scale @ A3 Scale @A1 Revision Date  
**1:250** **1:125** **180308**  
YY MM DD



Revisions	By	Chk
A 170601 Issued for Planning	JS	DK
B 170714 Issued for Planning	JS	DK
C 170810 Final comments from DP9 & Reef issued for Planning	AD	DK
C 180308 Issued for Planning	JS	SE

Notes

AFFORDABLE - SOCIAL

- 2 bed
- 3 bed

AFFORDABLE - INTERMEDIATE

- 1 bed
- 2 bed

PRIVATE

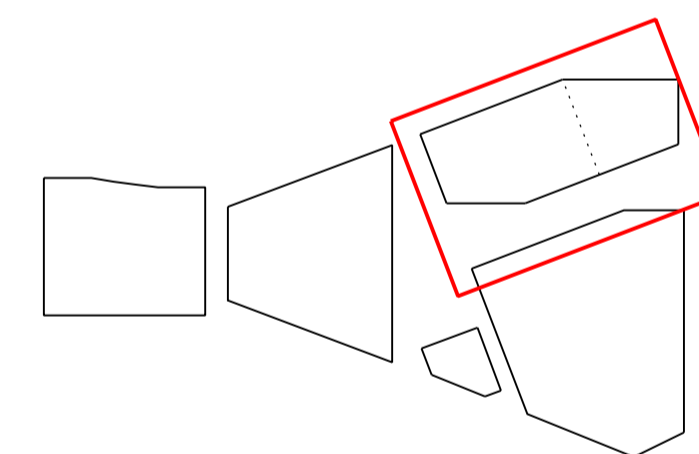
- Studio
- 1 bed
- 2 bed

ANNOTATIONS

- L Living Room
- K Kitchen
- MB Master Bedroom
- B Bedroom

All units designed to AD Part M Vol1, M4(2) 2015 Wheelchair Accessible & Adaptable Dwellings except where noted:

- WU AD Part M4(3) Wheelchair User Accessible Dwelling
- WA AD Part M4(3) Wheelchair Adaptable Dwelling



**Bennetts Associates Architects**

1 Rawstorne Place London EC1V 7NL  
T +44 (0)20 7520 3300 F +44 (0)20 7520 3333  
E mail@bennettsassociates.com

For Bennetts Associates' electronic information issue disclaimer -  
[www.bennettsassociates.com/informationanddisclaimer/](http://www.bennettsassociates.com/informationanddisclaimer/)

Project Project No. 1603  
**The Ugly Brown Building**  
Reef Estates

Drawing Title  
**Proposed Residential Tenure Plan**  
Residential Level 04

Drawing Number Revision  
1603\_P\_134 C

Scale @ A3 Scale @A1 Revision Date  
1:250 1:125 180308  
YY MM DD



Revisions	By	Chk
A 170601 Issued for Planning	JS	DK
B 170714 Issued for Planning	JS	DK
C 170810 Final comments from DP9 & Reef issued for Planning	AD	DK
C 180308 Issued for Planning	JS	SE

Notes

AFFORDABLE - SOCIAL

- 2 bed
- 3 bed

AFFORDABLE - INTERMEDIATE

- 1 bed
- 2 bed

PRIVATE

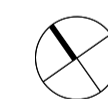
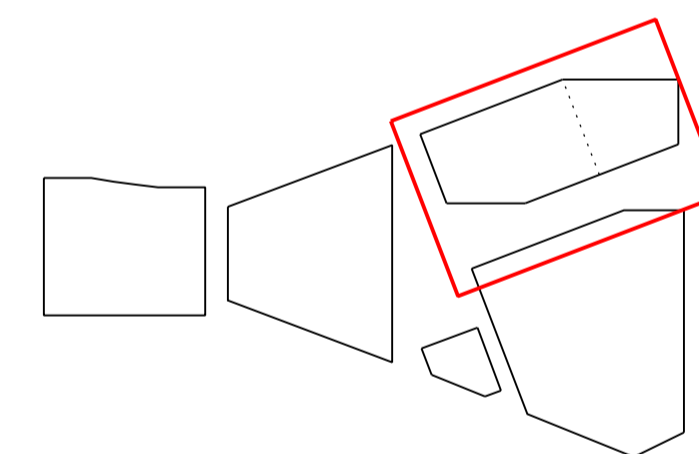
- Studio
- 1 bed
- 2 bed

ANNOTATIONS

- L Living Room
- K Kitchen
- MB Master Bedroom
- B Bedroom

All units designed to AD Part M Vol1, M4(2) 2015 Wheelchair Accessible & Adaptable Dwellings except where noted:

- WU AD Part M4(3) Wheelchair User Accessible Dwelling
- WA AD Part M4(3) Wheelchair Adaptable Dwelling



**Bennetts Associates Architects**

1 Rawstorne Place London EC1V 7NL  
 T +44 (0)20 7520 3300 F +44 (0)20 7520 3333  
 E mail@bennettsassociates.com

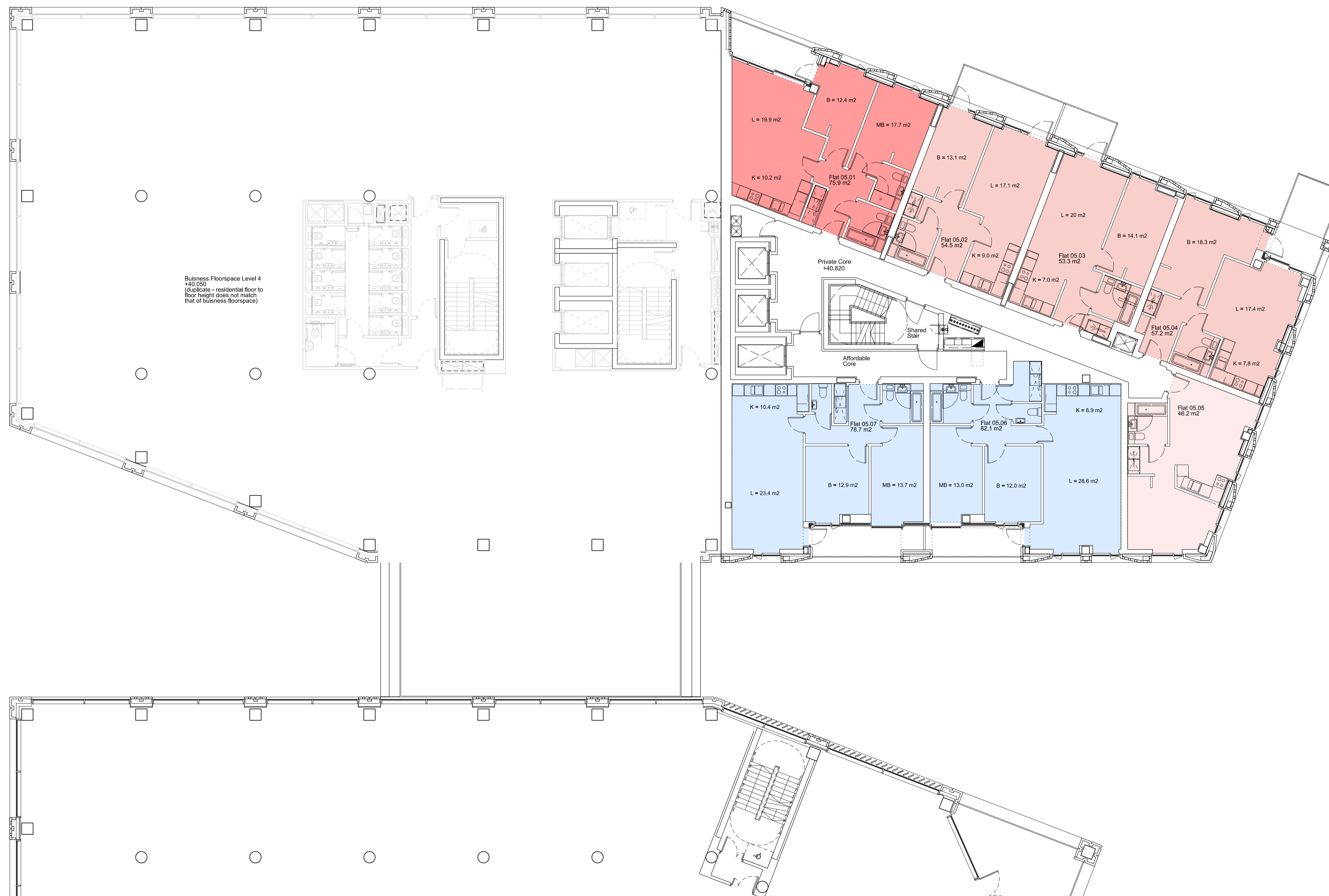
For Bennetts Associates' electronic information issue disclaimer -  
[www.bennettsassociates.com/informationanddisclaimer/](http://www.bennettsassociates.com/informationanddisclaimer/)

Project Project No. 1603  
**The Ugly Brown Building**  
 Reef Estates

Drawing Title  
**Proposed Residential Tenure Plan**  
**Residential Level 05**

Drawing Number Revision  
**1603\_P\_135** **C**

Scale @ A3 Scale @A1 Revision Date  
**1:250** **1:125** **180308**  
 YY MM DD



Revisions	By	Chk
A 170601 Issued for Planning	JS	DK
B 170714 Issued for Planning	JS	DK
C 170810 Final comments from DP9 & Reef issued for Planning	AD	DK
C 180308 Issued for Planning	JS	SE

Notes

AFFORDABLE - SOCIAL

- 2 bed
- 3 bed

AFFORDABLE - INTERMEDIATE

- 1 bed
- 2 bed

PRIVATE

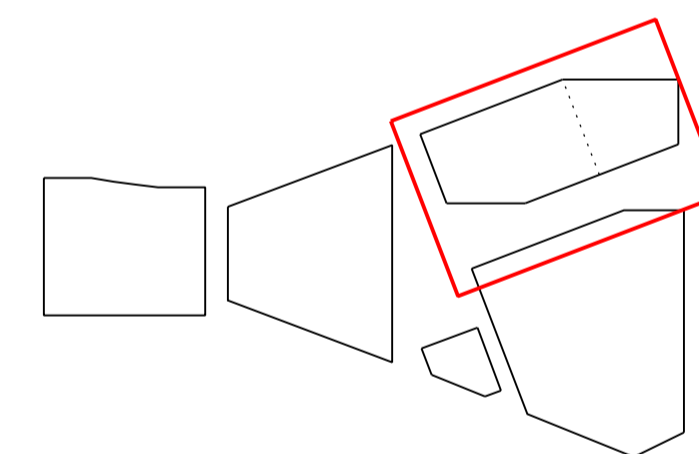
- Studio
- 1 bed
- 2 bed

ANNOTATIONS

- L Living Room
- K Kitchen
- MB Master Bedroom
- B Bedroom

All units designed to AD Part M Vol1, M4(2) 2015 Wheelchair Accessible & Adaptable Dwellings except where noted:

- WU AD Part M4(3) Wheelchair User Accessible Dwelling
- WA AD Part M4(3) Wheelchair Adaptable Dwelling



**Bennetts Associates Architects**

1 Rawstorne Place London EC1V 7NL  
 T +44 (0)20 7520 3300 F +44 (0)20 7520 3333  
 E mail@bennettsassociates.com

For Bennetts Associates' electronic information issue disclaimer -  
[www.bennettsassociates.com/informationanddisclaimer/](http://www.bennettsassociates.com/informationanddisclaimer/)

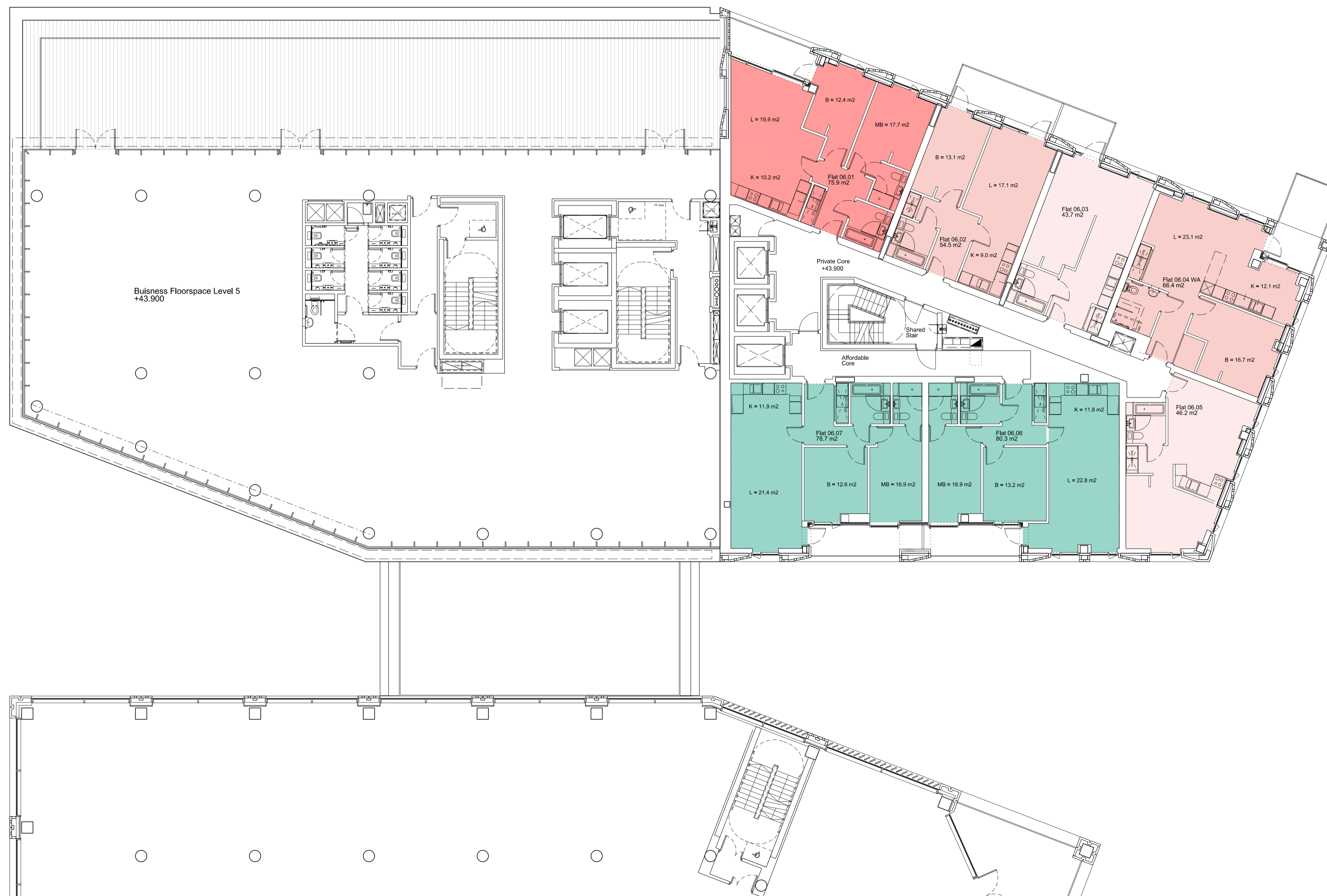
Project 1603 Project No. 1603

**The Ugly Brown Building**  
 Reef Estates

Drawing Title  
 Proposed Residential Tenure Plan  
 Residential Level 06

Drawing Number 1603\_P\_136 Revision C

Scale @ A3 1:250 Scale @A1 1:125 Revision Date 180308  
 YY MM DD



Revisions	By	Chk
A 170601 Issued for Planning	JS	DK
B 170714 Issued for Planning	JS	DK
C 170810 Final comments from DP9 & Reef issued for Planning	AD	DK
C 180308 Issued for Planning	JS	SE

Notes

AFFORDABLE - SOCIAL

- 2 bed
- 3 bed

AFFORDABLE - INTERMEDIATE

- 1 bed
- 2 bed

PRIVATE

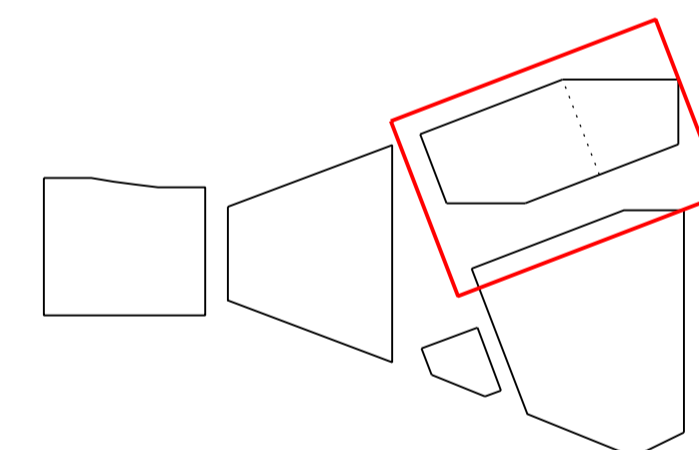
- Studio
- 1 bed
- 2 bed

ANNOTATIONS

- L Living Room
- K Kitchen
- MB Master Bedroom
- B Bedroom

All units designed to AD Part M Vol1, M4(2) 2015 Wheelchair Accessible & Adaptable Dwellings except where noted:

- WU AD Part M4(3) Wheelchair User Accessible Dwelling
- WA AD Part M4(3) Wheelchair Adaptable Dwelling



**Bennetts Associates Architects**

1 Rawstorne Place London EC1V 7NL  
T +44 (0)20 7520 3300 F +44 (0)20 7520 3333  
E mail@bennettsassociates.com

For Bennetts Associates' electronic information issue disclaimer - www.bennettsassociates.com/informationanddisclaimer/

Project Project No. 1603  
**The Ugly Brown Building**  
Reef Estates

Drawing Title  
Proposed Residential Tenure Plan  
Residential Level 07

Drawing Number Revision  
1603\_P\_137 C

Scale @ A3 Scale @A1 Revision Date  
1:250 1:125 180308  
YY MM DD





Revisions	By	Chk
A 170601 Issued for Planning	JS	DK
B 170714 Issued for Planning	JS	DK
C 170810 Final comments from DP9 & Reef issued for Planning	AD	DK
C 180308 Issued for Planning	JS	SE

Notes

AFFORDABLE - SOCIAL

- 2 bed
- 3 bed

AFFORDABLE - INTERMEDIATE

- 1 bed
- 2 bed

PRIVATE

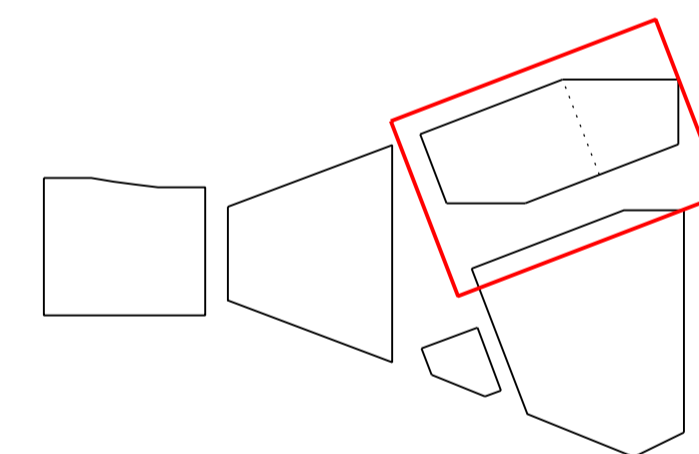
- Studio
- 1 bed
- 2 bed

ANNOTATIONS

- L Living Room
- K Kitchen
- MB Master Bedroom
- B Bedroom

All units designed to AD Part M Vol1, M4(2) 2015 Wheelchair Accessible & Adaptable Dwellings except where noted:

- WU AD Part M4(3) Wheelchair User Accessible Dwelling
- WA AD Part M4(3) Wheelchair Adaptable Dwelling



**Bennetts Associates Architects**

1 Rawstorne Place London EC1V 7NL  
T +44 (0)20 7520 3300 F +44 (0)20 7520 3333  
E mail@bennettsassociates.com

For Bennetts Associates' electronic information issue disclaimer - [www.bennettsassociates.com/informationanddisclaimer/](http://www.bennettsassociates.com/informationanddisclaimer/)

Project 1603 Project No. 1603

**The Ugly Brown Building**  
Reef Estates

Drawing Title  
Proposed Residential Tenure Plan  
Residential Level 08

Drawing Number  
1603\_P\_138

Revision  
C

Scale @ A3 1:250 Scale @A1 1:125 Revision Date 180308  
YY MM DD



Notes

AFFORDABLE - SOCIAL

- 2 bed
- 3 bed

AFFORDABLE - INTERMEDIATE

- 1 bed
- 2 bed

PRIVATE

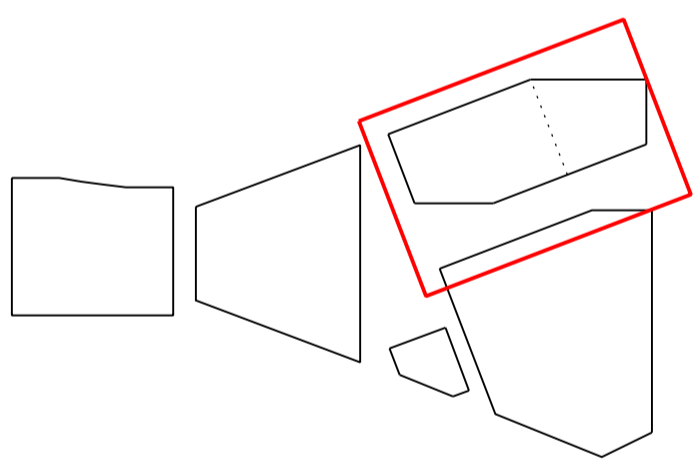
- Studio
- 1 bed
- 2 bed

ANNOTATIONS

- L Living Room
- K Kitchen
- MB Master Bedroom
- B Bedroom

All units designed to AD Part M Vol1, M4(2) 2015  
 Wheelchair Accessible & Adaptable Dwellings  
 except where noted:

- WU AD Part M4(3) Wheelchair User Accessible Dwelling
- WA AD Part M4(3) Wheelchair Adaptable Dwelling



**Bennetts Associates Architects**

1 Rawstorne Place London EC1V 7NL  
 T +44 (0)20 7520 3300 F +44 (0)20 7520 3333  
 E mail@bennettsassociates.com

For Bennetts Associates' electronic information issue disclaimer -  
 www.bennettsassociates.com/informationanddisclaimer/

Project Project No. 1603

**The Ugly Brown Building**  
 Reef Estates

Drawing Title  
**Proposed Residential Tenure Plan**  
 Residential Level 09

Drawing Number  
**1603\_P\_139**

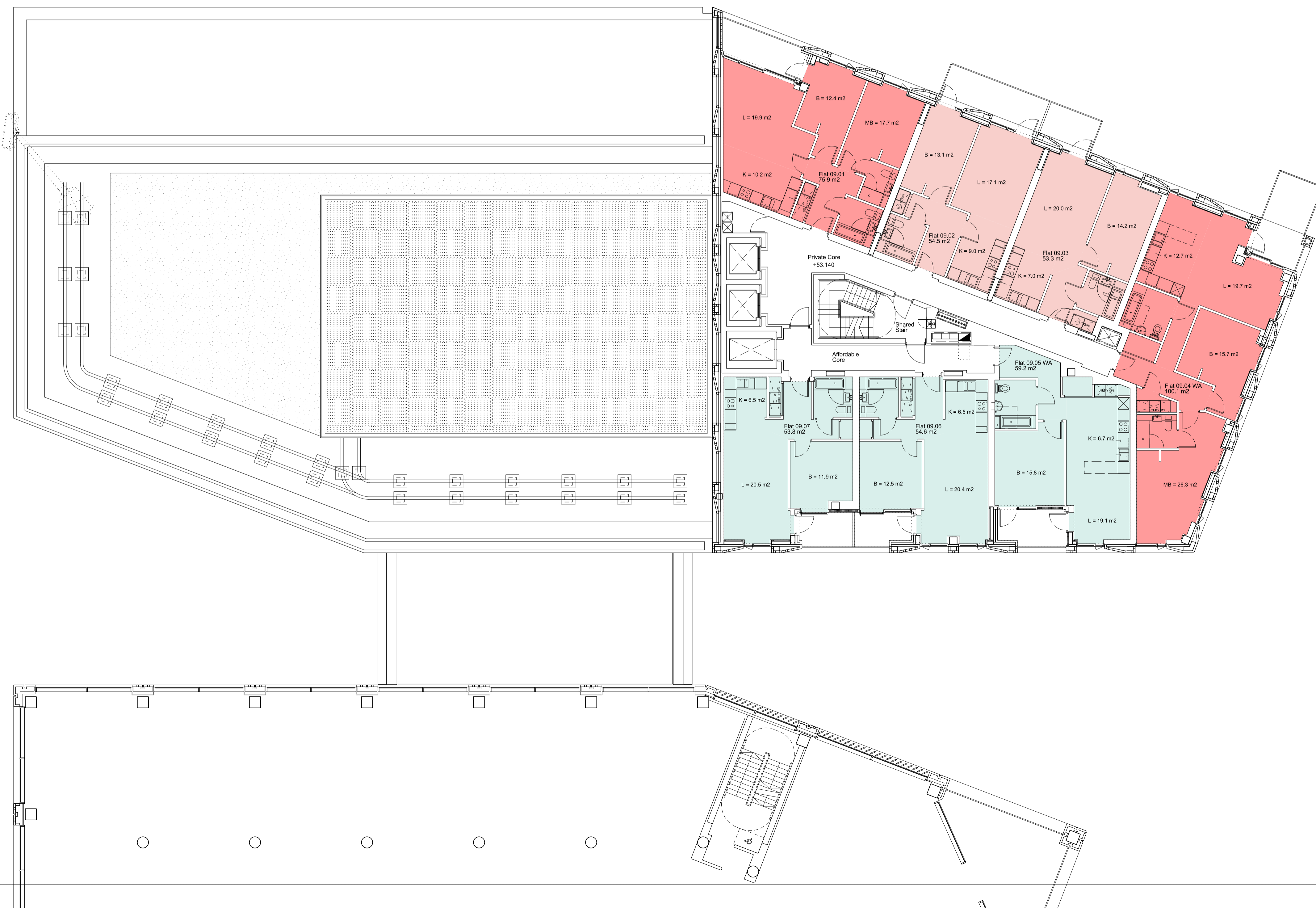
Revision  
**B**

Scale @ A3  
**1:250**

Scale @A1  
**1:125**

Revision Date  
**180308**

YY MM DD



Notes

AFFORDABLE - SOCIAL

- 2 bed
- 3 bed

AFFORDABLE - INTERMEDIATE

- 1 bed
- 2 bed

PRIVATE

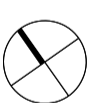
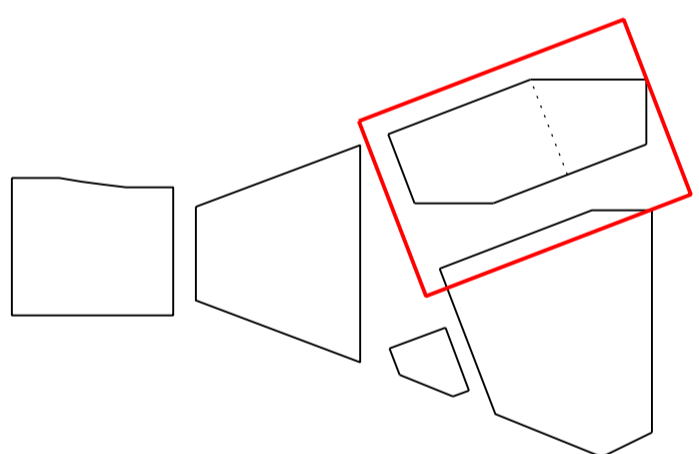
- Studio
- 1 bed
- 2 bed

ANNOTATIONS

- L Living Room
- K Kitchen
- MB Master Bedroom
- B Bedroom

All units designed to AD Part M Vol1, M4(2) 2015  
 Wheelchair Accessible & Adaptable Dwellings  
 except where noted:

- WU AD Part M4(3) Wheelchair User Accessible Dwelling
- WA AD Part M4(3) Wheelchair Adaptable Dwelling



**Bennetts Associates Architects**

1 Rawstorne Place London EC1V 7NL  
 T +44 (0)20 7520 3300 F +44 (0)20 7520 3333  
 E mail@bennettsassociates.com

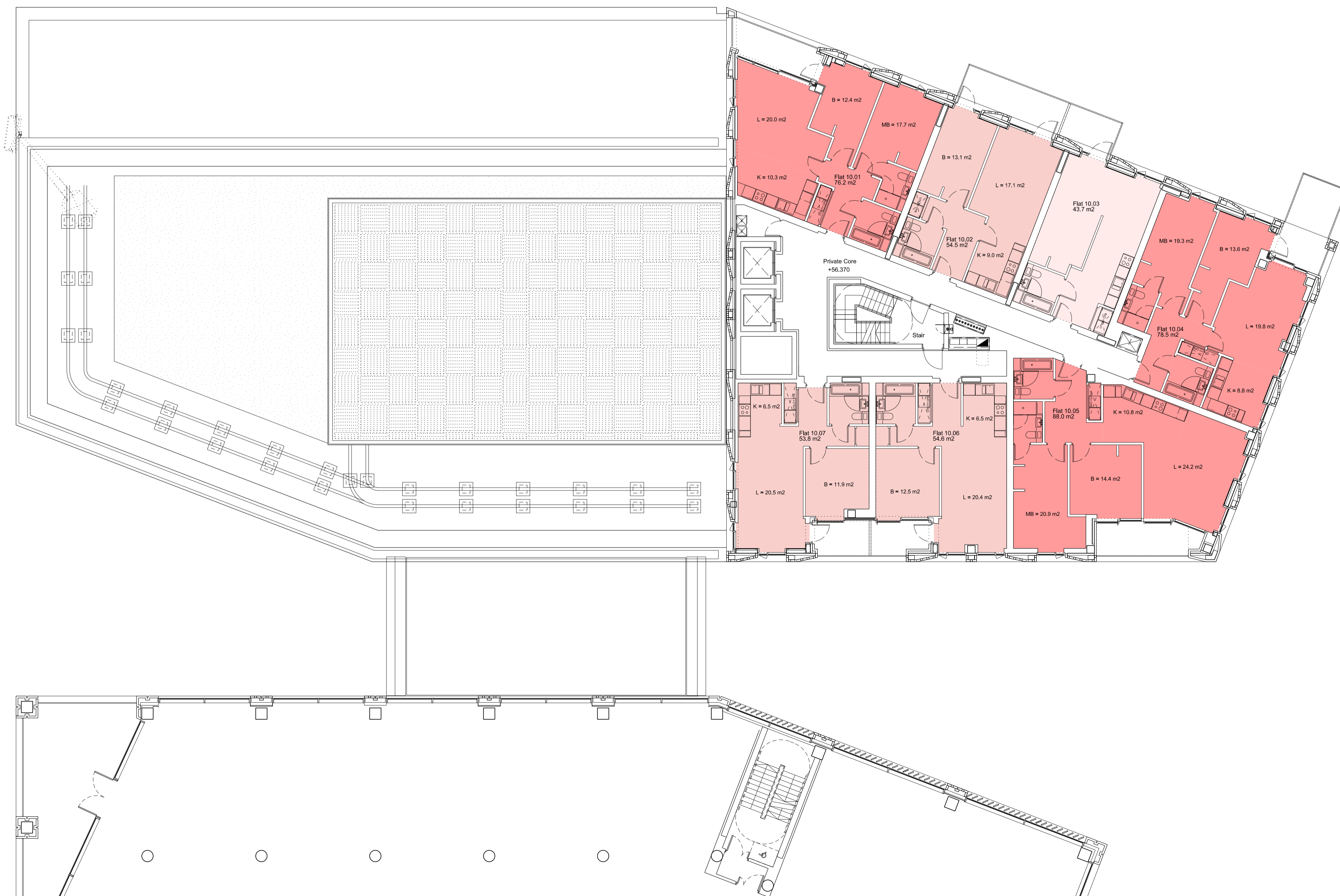
For Bennetts Associates' electronic information issue disclaimer -  
[www.bennettsassociates.com/informationanddisclaimer/](http://www.bennettsassociates.com/informationanddisclaimer/)

Project Project No. 1603  
**The Ugly Brown Building**  
 Reef Estates

Drawing Title  
**Proposed Residential Tenure Plan**  
**Residential Level 10**

Drawing Number Revision  
**1603\_P\_140** **B**

Scale @ A3 Scale @A1 Revision Date  
**1:250** **1:125** **180308**  
 YY MM DD



Notes

AFFORDABLE - SOCIAL

- 2 bed
- 3 bed

AFFORDABLE - INTERMEDIATE

- 1 bed
- 2 bed

PRIVATE

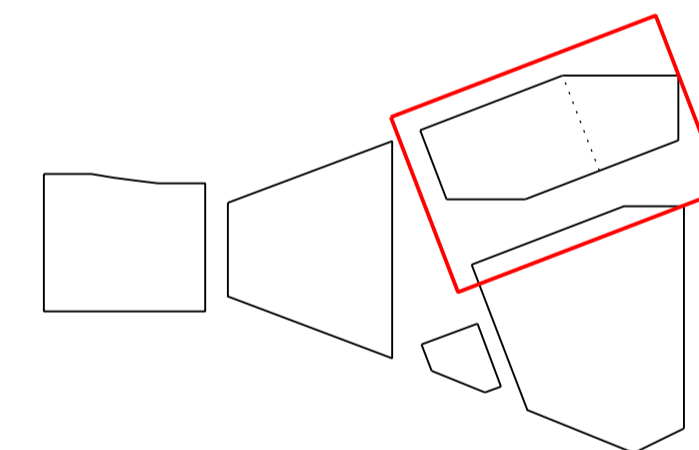
- Studio
- 1 bed
- 2 bed

ANNOTATIONS

- L Living Room
- K Kitchen
- MB Master Bedroom
- B Bedroom

All units designed to AD Part M Vol1, M4(2) 2015  
 Wheelchair Accessible & Adaptable Dwellings  
 except where noted:

- WU AD Part M4(3) Wheelchair User Accessible Dwelling
- WA AD Part M4(3) Wheelchair Adaptable Dwelling



**Bennetts Associates Architects**

1 Rawstorne Place London EC1V 7NL  
 T +44 (0)20 7520 3300 F +44 (0)20 7520 3333  
 E mail@bennettsassociates.com

For Bennetts Associates' electronic information issue disclaimer -  
 www.bennettsassociates.com/informationanddisclaimer/

Project Project No. 1603  
**The Ugly Brown Building**  
 Reef Estates

Drawing Title  
**Proposed Residential Tenure Plan**  
 Residential Level 11

Drawing Number  
**1603\_P\_141**

Revision  
**B**

Scale @ A3 Scale @A1 Revision Date  
 1:250 1:125 180308  
 YY MM DD

