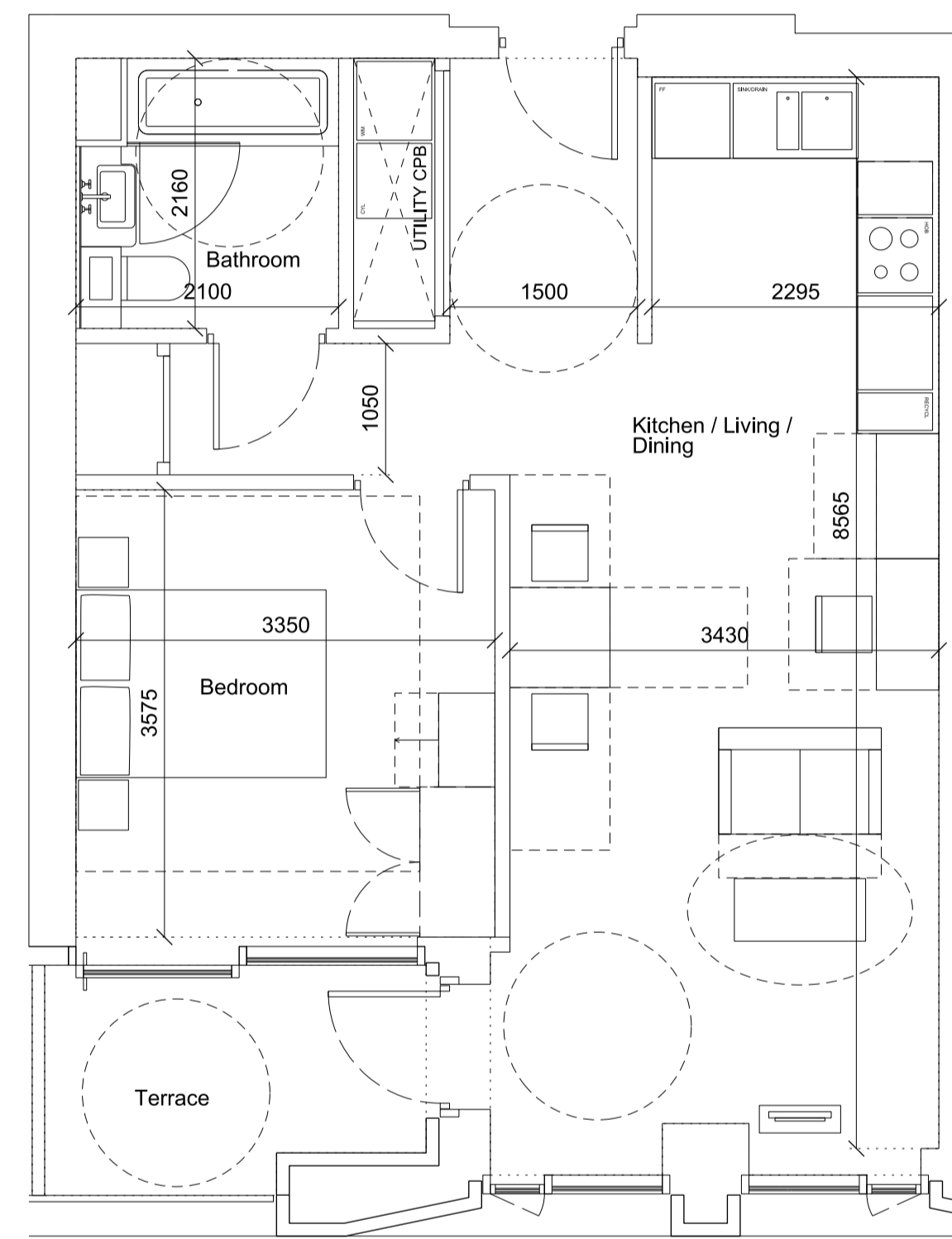
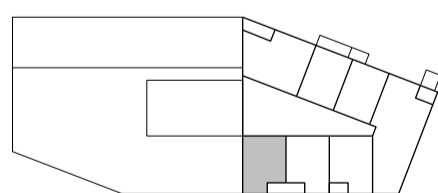


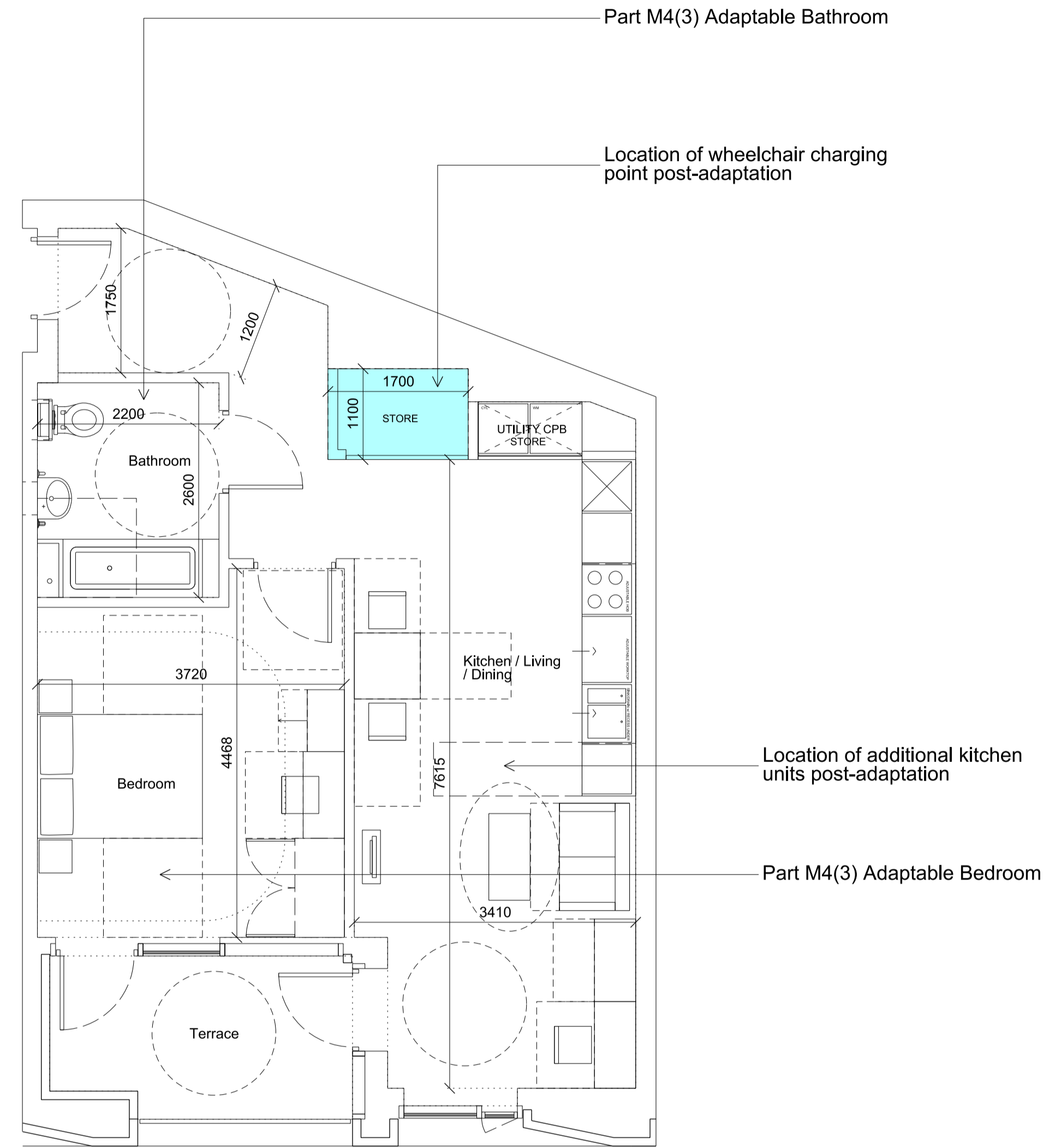
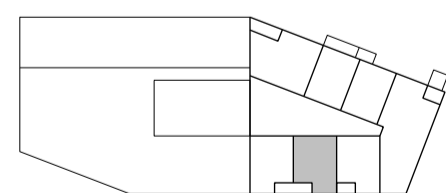
01 A-01-01 Affordable 1 bed 2 person 53.8 sqm

Unit Numbers:  
 Intermediate 08.07, 09.07



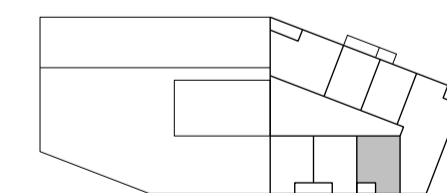
02 A-01-02 Affordable 1 bed 2 person 54.6 sqm

Unit Numbers:  
 Intermediate 08.06, 09.06



03 A-01-03 Affordable 1 bed 2 person Wheelchair Adaptable 59.2 sqm

Unit Numbers:  
 Intermediate 08.05, 09.05



Notes

All units designed to AD Part M Vol1 M4(2) 2015 Wheelchair Accessible & Adaptable Dwellings except where noted:  
 AD Part M4(3) Wheelchair User Accessible Dwelling  
 AD Part M4(3) Wheelchair Adaptable Dwelling

**Bennetts Associates Architects**

1 Rawstorne Place London EC1V 7NL  
 T +44 (0)20 7520 3300 F +44 (0)20 7520 3333  
 E mail@bennettsassociates.com

For Bennetts Associates' electronic information issue disclaimer - www.bennettsassociates.com/informationanddisclaimer/

Project Project No. 1603  
**The Ugly Brown Building**  
 Reef Estates

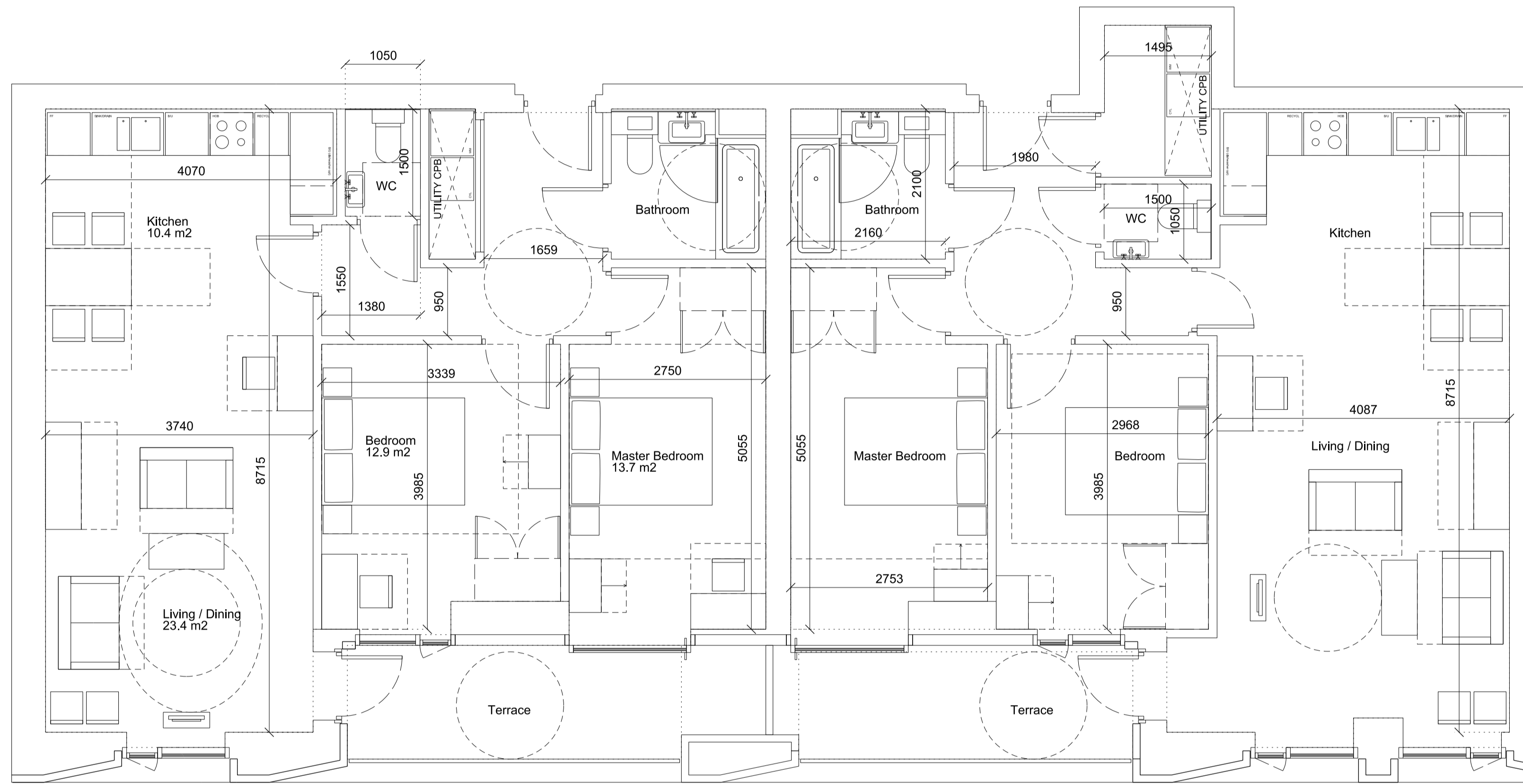
Drawing Title  
 Proposed  
 Residential Accommodation Unit Types

Drawing Number Revision  
 1603\_P\_1030 B

Scale @ A3 Scale @A1 Revision Date  
 1 : 100 1 : 50 180308  
 YY MM DD

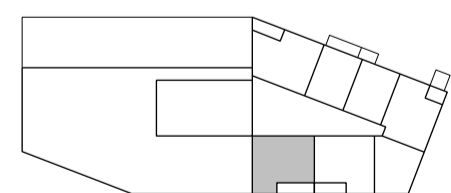
Notes

All units designed to AD Part M Vol1 M4(2) 2015  
 Wheelchair Accessible & Adaptable Dwellings  
 except where noted:  
 AD Part M4(3) Wheelchair User Accessible Dwelling  
 AD Part M4(3) Wheelchair Adaptable Dwelling



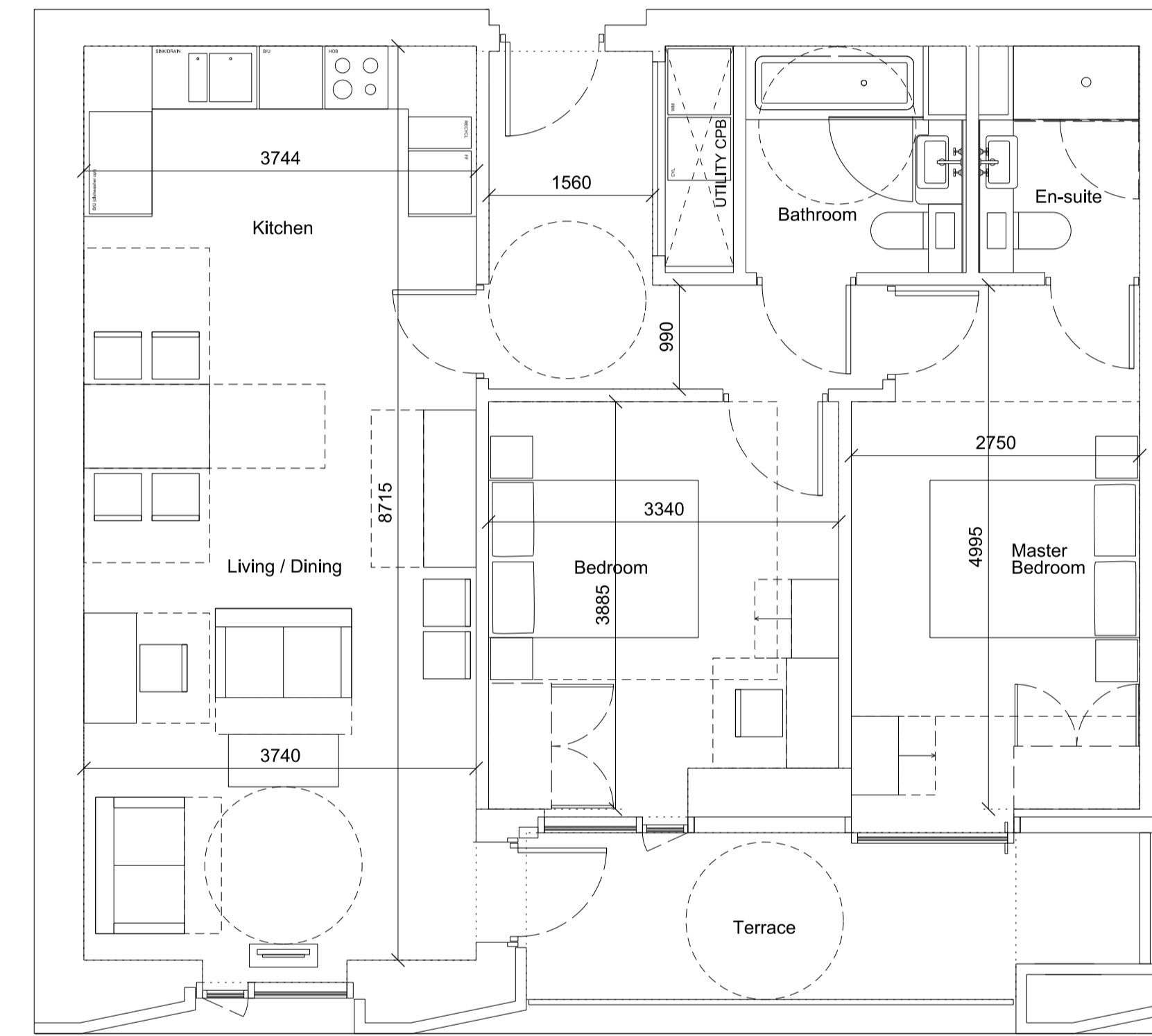
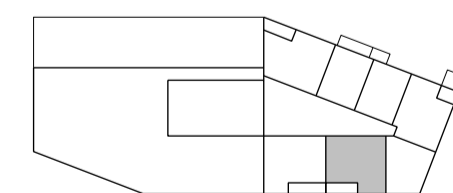
01 A-02-01 Affordable 2 bed 4 person 78.7 sqm

Unit Numbers:  
 Social 05.07



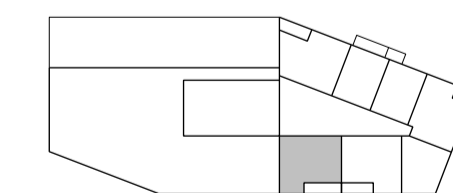
02 A-02-02 Affordable 2 bed 4 person 82.1 sqm

Unit Numbers:  
 Social 05.06



01 A-02-03 Affordable 2 bed 4 person 78.7 sqm

Unit Numbers:  
 Intermediate 06.07, 07.07



**Bennetts Associates Architects**

1 Rawstorne Place London EC1V 7NL  
 T +44 (0)20 7520 3300 F +44 (0)20 7520 3333  
 E mail@bennettsassociates.com  
For Bennetts Associates' electronic information issue disclaimer -  
[www.bennettsassociates.com/information/disclaimer/](http://www.bennettsassociates.com/information/disclaimer/)

Project Project No. 1603  
**The Ugly Brown Building**  
 Reef Estates

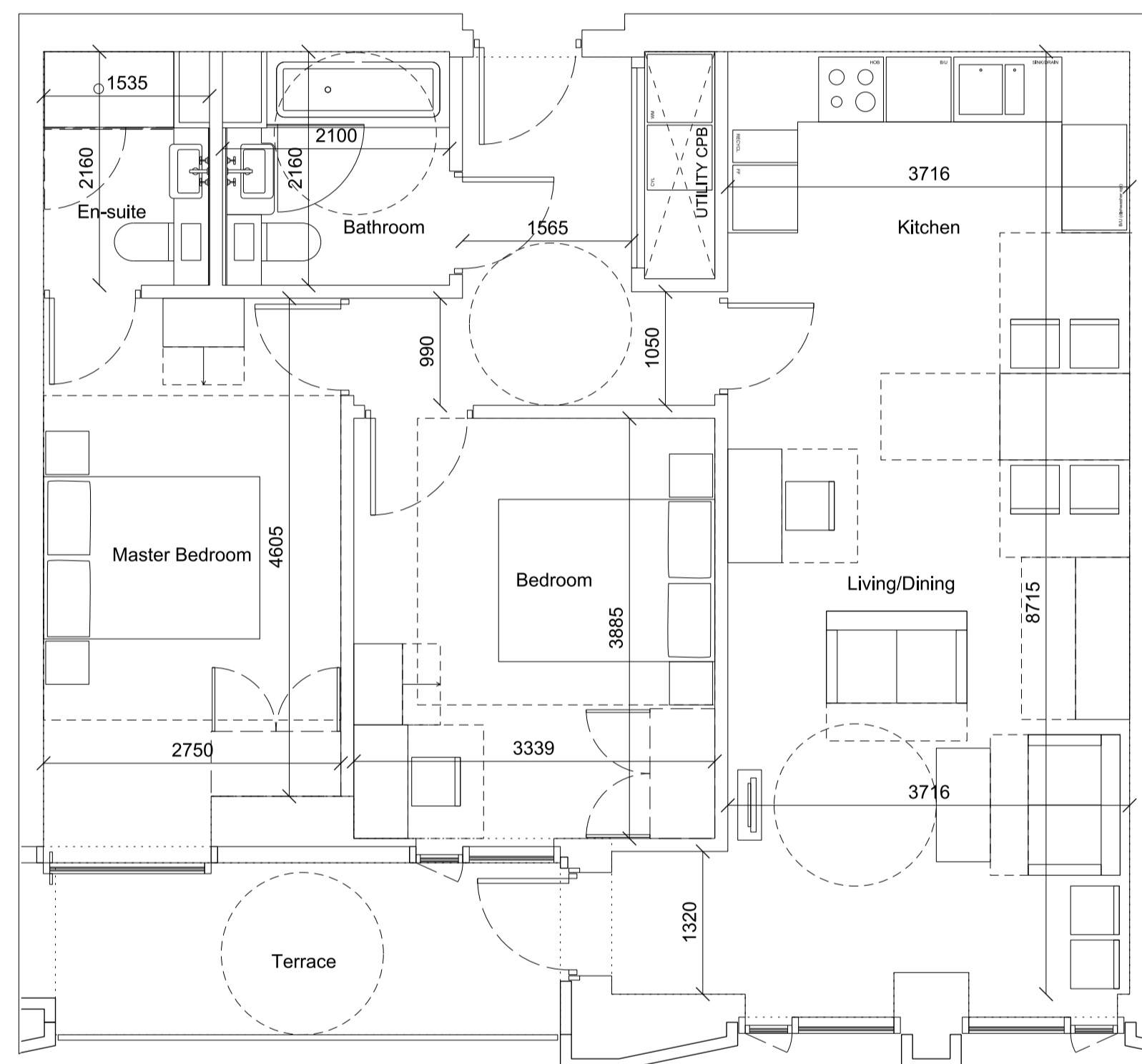
Drawing Title  
 Proposed  
 Residential Accommodation Unit Types

Drawing Number Revision  
 1603\_P\_1031 B

Scale @ A3 Scale @A1 Revision Date  
 1 : 100 1 : 50 180308  
 YY MM DD

Notes

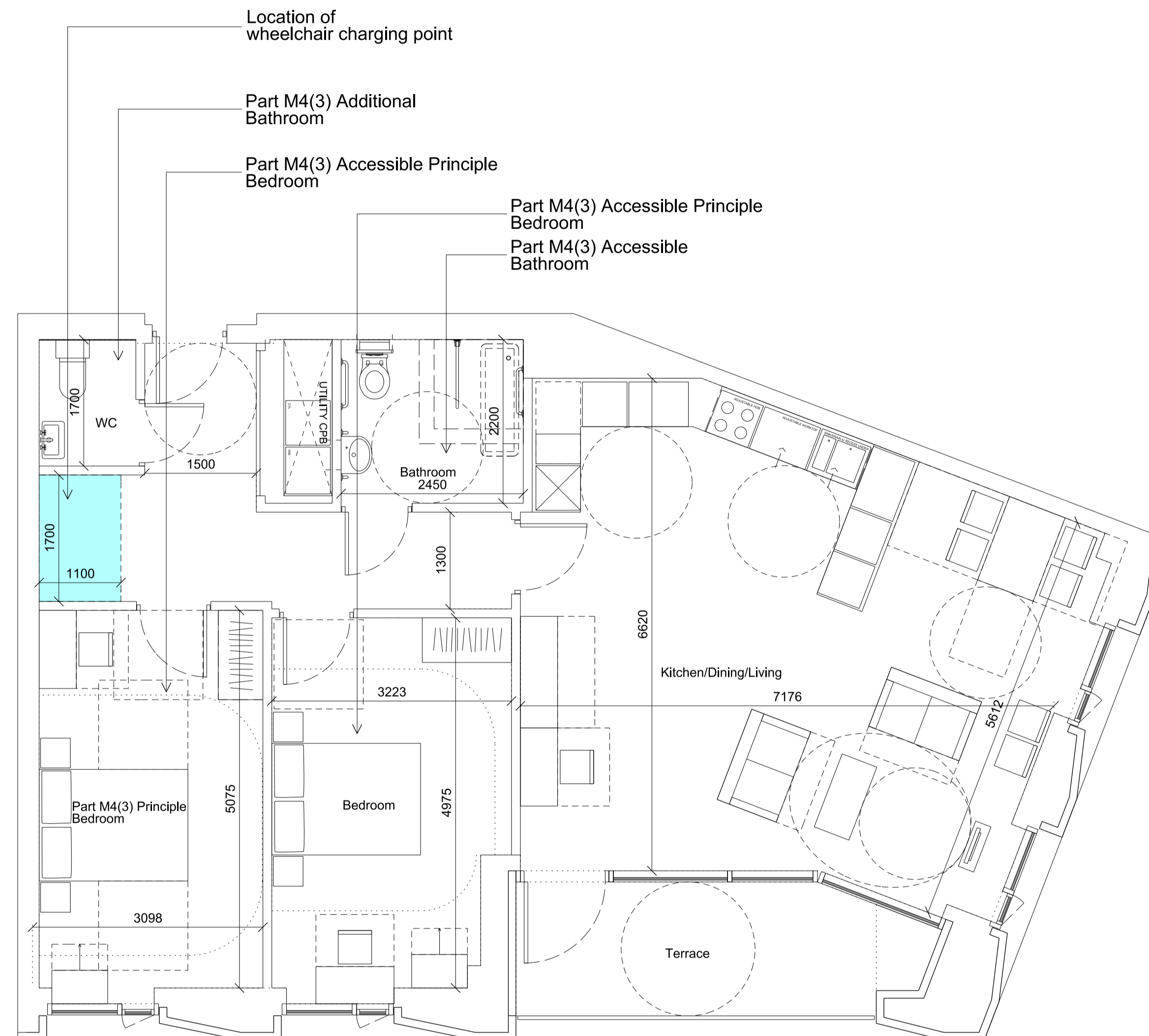
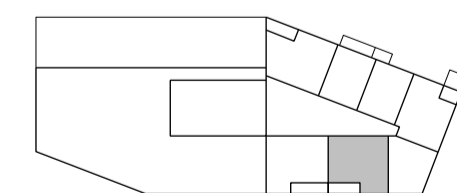
All units designed to AD Part M Vol1 M4(2) 2015 Wheelchair Accessible & Adaptable Dwellings except where noted:  
 AD Part M4(3) Wheelchair User Accessible Dwelling  
 AD Part M4(3) Wheelchair Adaptable Dwelling



01 A-02-04 Affordable 2 bed 4 person 80.3 sqm

Unit Numbers:

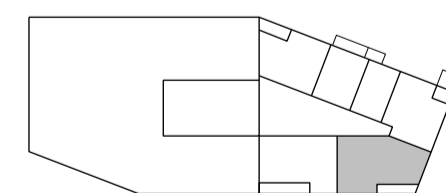
Intermediate 06.06, 07.06



02 A-02-05 Affordable 2 bed 4 person Wheelchair User Accessible 100.8 sqm

Unit Numbers:

Social 01.05



**Bennetts Associates Architects**

1 Rawstorne Place London EC1V 7NL  
 T +44 (0)20 7520 3300 F +44 (0)20 7520 3333  
 E mail@bennettsassociates.com

For Bennetts Associates' electronic information issue disclaimer -  
[www.bennettsassociates.com/information/disclaimer/](http://www.bennettsassociates.com/information/disclaimer/)

Project Project No. 1603

**The Ugly Brown Building**  
 Reef Estates

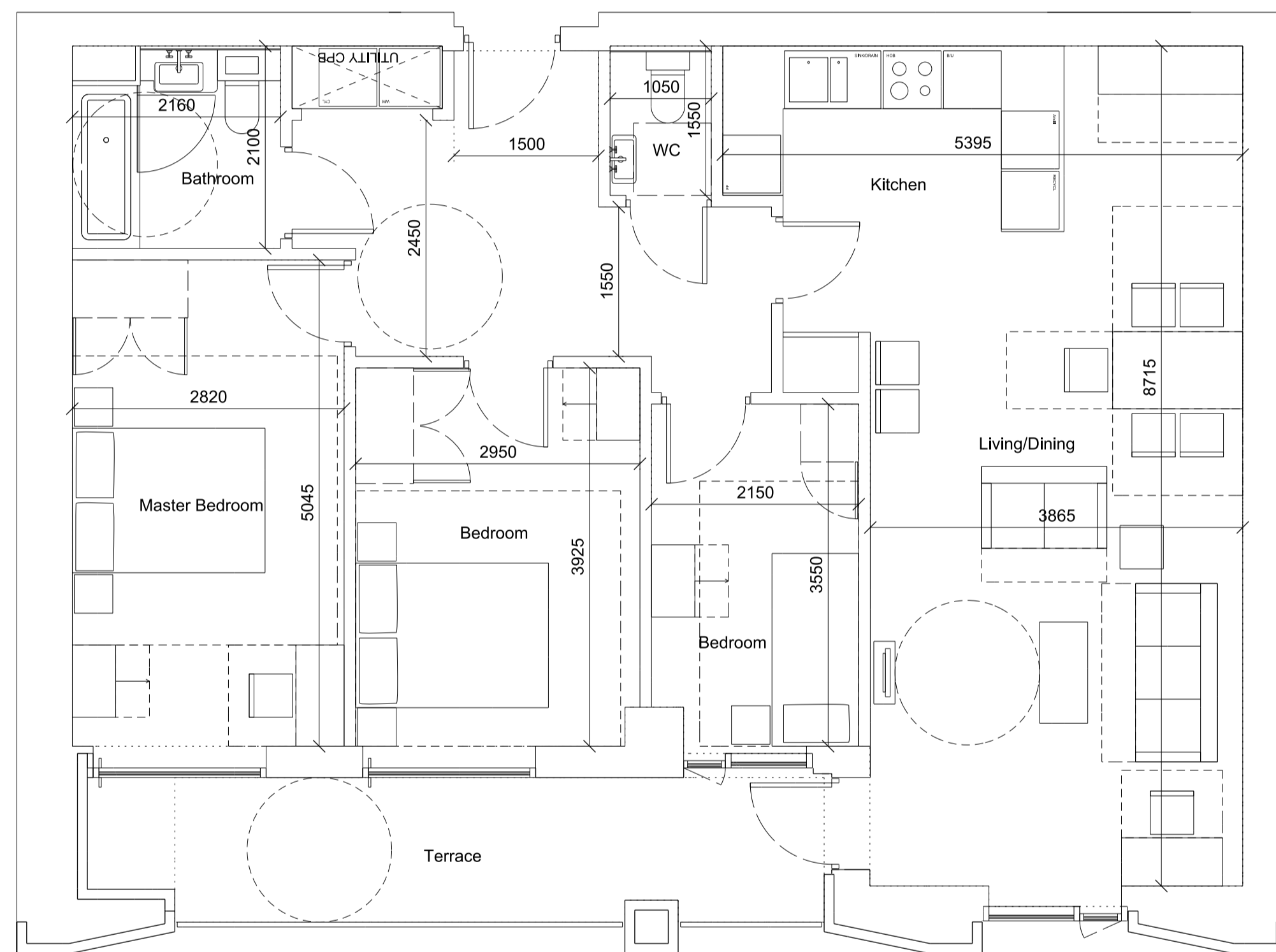
Drawing Title  
 Proposed  
 Residential Accommodation Unit Types

Drawing Number	Revision
1603_P_1032	B

Scale @ A3	Scale @A1	Revision Date
1 : 100	1 : 50	180308
		YY MM DD

Notes

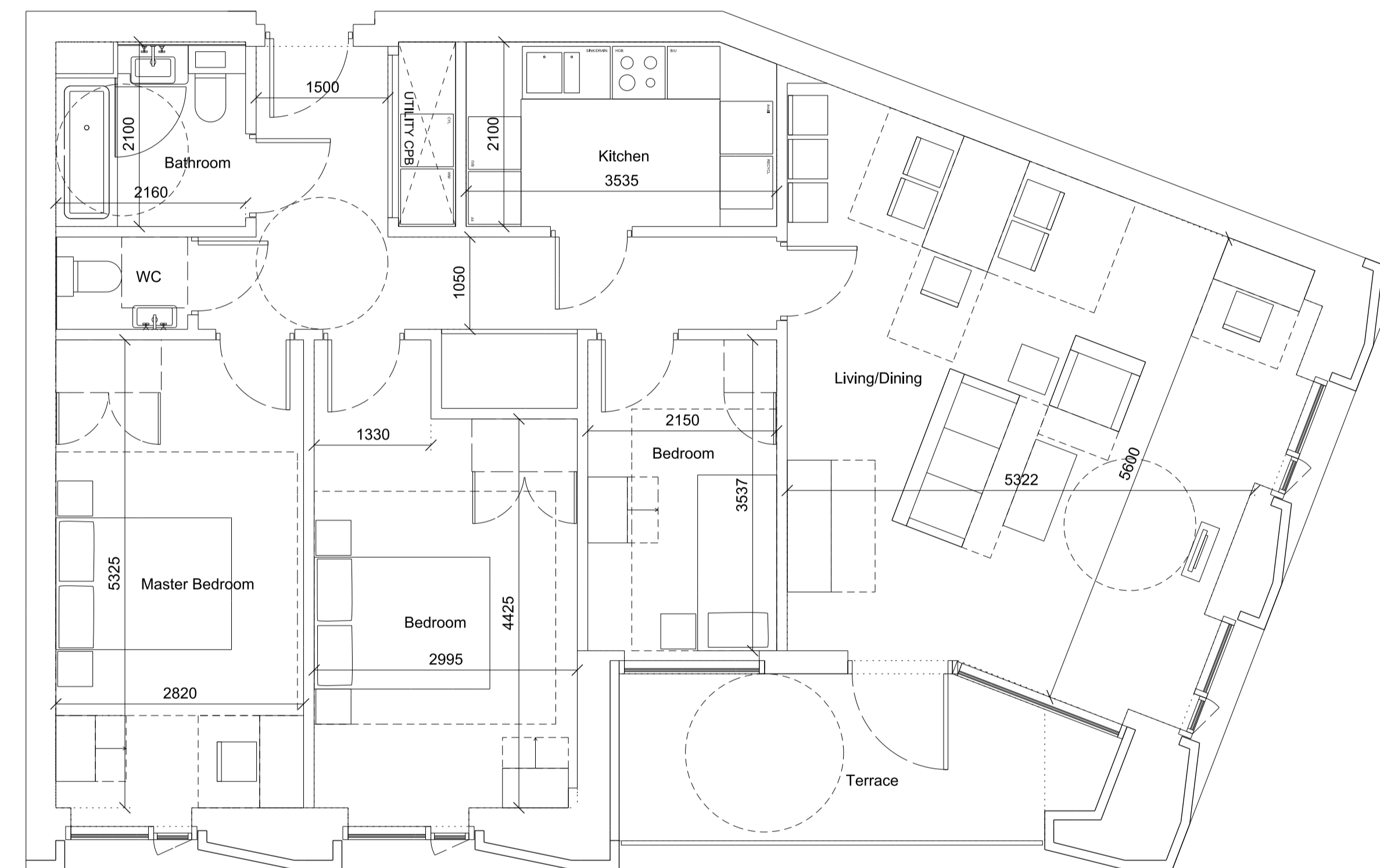
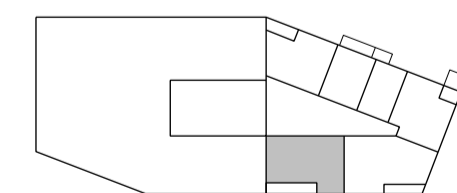
All units designed to AD Part M Vol1 M4(2) 2015  
 Wheelchair Accessible & Adaptable Dwellings  
 except where noted:  
 AD Part M4(3) Wheelchair User Accessible Dwelling  
 AD Part M4(3) Wheelchair Adaptable Dwelling



01 A-03-01 Affordable 3 bed 5 person 93.9 sqm

Unit Numbers:

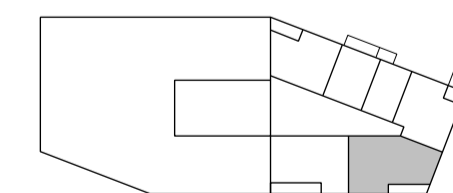
Social 01.06, 02.06, 03.06, 04.06



02 A-03-02 Affordable 3 bed 5 person 101.3 sqm

Unit Numbers:

Social 02.05, 03.05, 04.05



**Bennetts Associates Architects**

1 Rawstorne Place London EC1V 7NL  
 T +44 (0)20 7520 3300 F +44 (0)20 7520 3333  
 E mail@bennettsassociates.com

For Bennetts Associates' electronic information issue disclaimer -  
 www.bennettsassociates.com/information/disclaimer/

Project Project No. 1603  
**The Ugly Brown Building**  
 Reef Estates

Drawing Title  
**Proposed**  
**Residential Accommodation Unit Types**

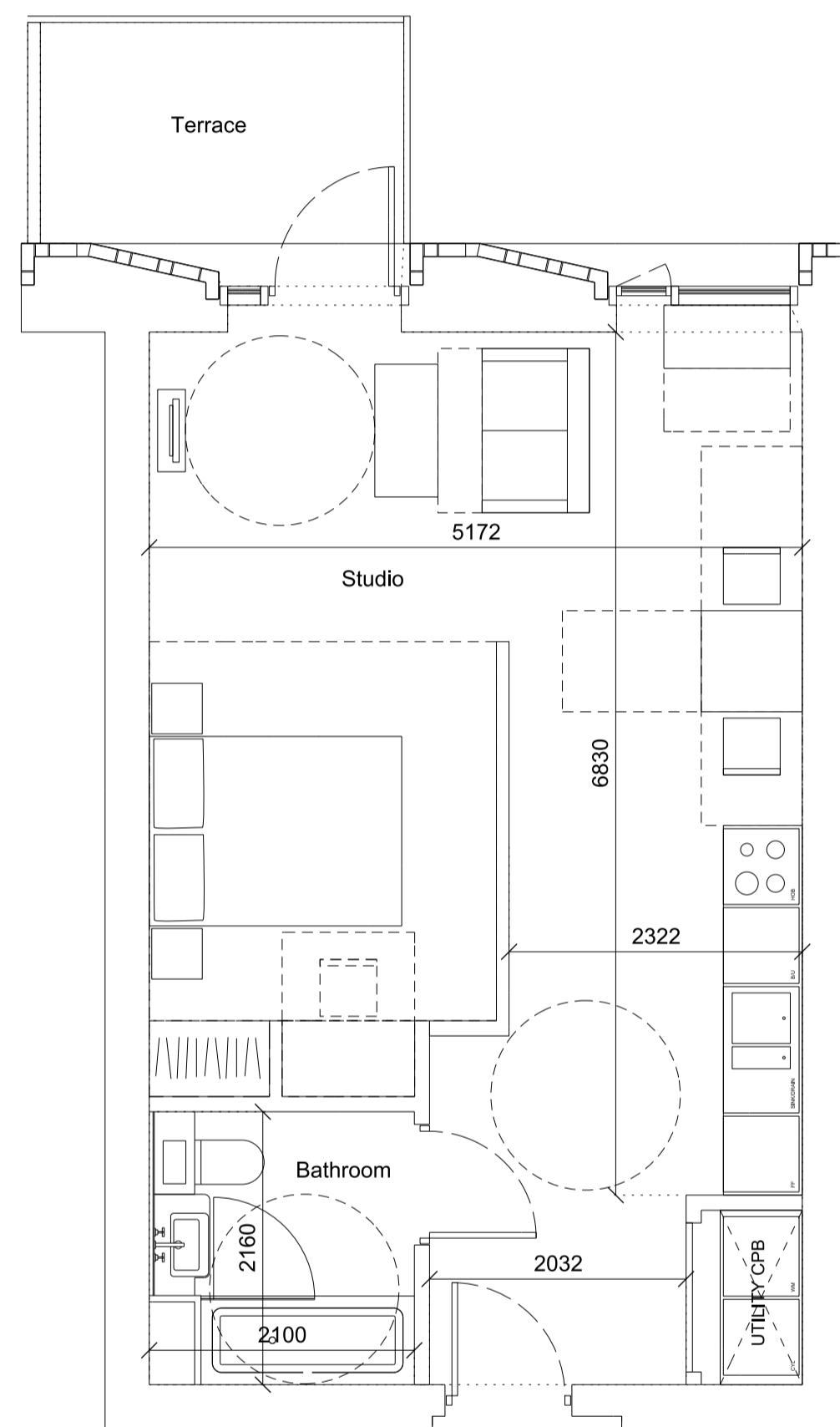
Drawing Number  
**1603\_P\_1033**

Revision  
**B**

Scale @ A3 Scale @A1 Revision Date  
**1 : 100 1 : 50 180308**  
 YY MM DD

Notes

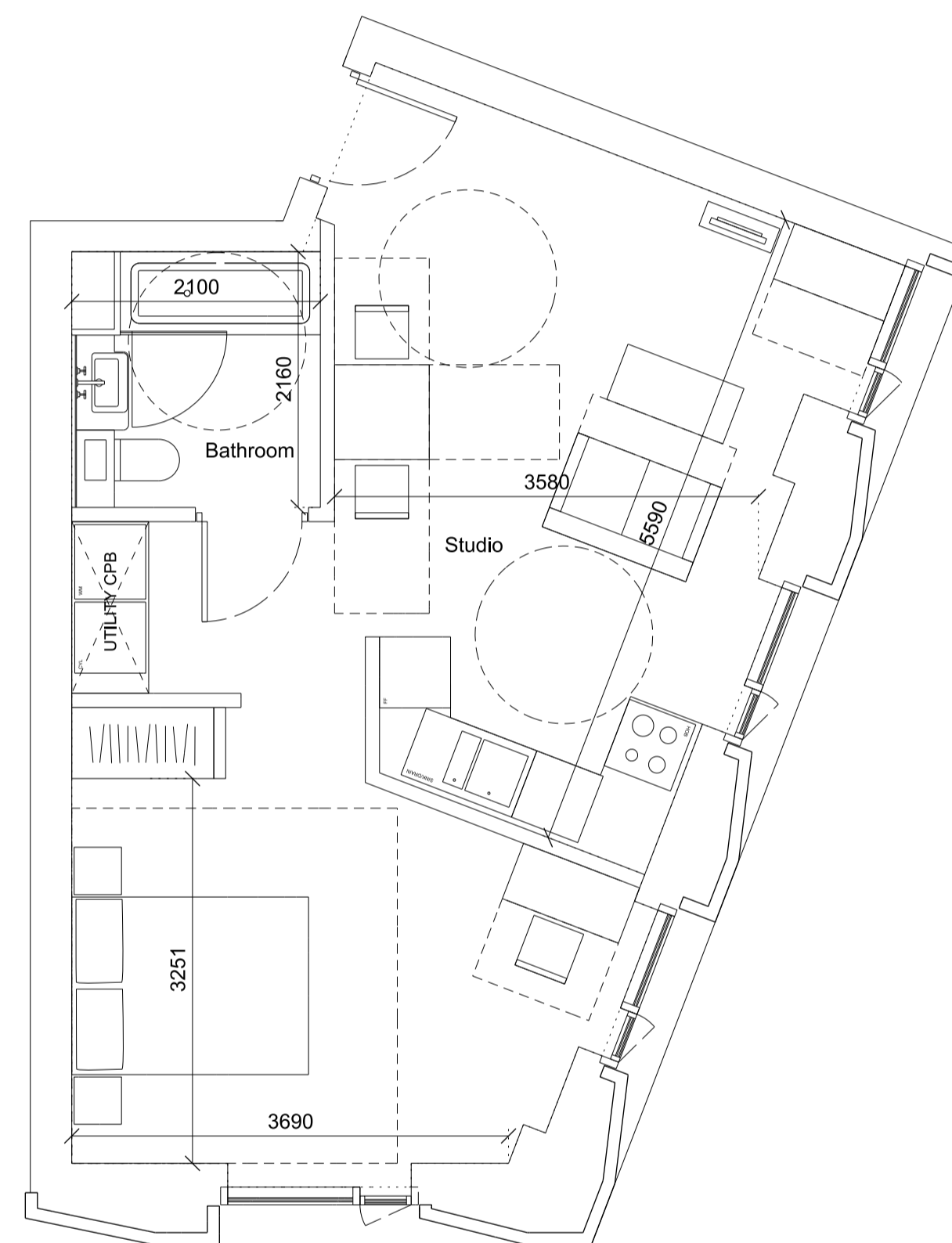
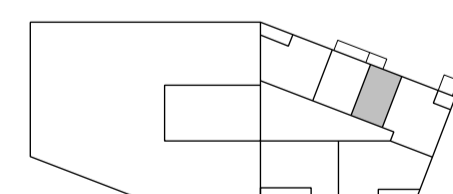
All units designed to AD Part M Vol1 M4(2) 2015  
 Wheelchair Accessible & Adaptable Dwellings  
 except where noted:  
 AD Part M4(3) Wheelchair User Accessible Dwelling  
 AD Part M4(3) Wheelchair Adaptable Dwelling



01 P-ST-01 Private Studio 43.7 sqm

Unit Numbers:

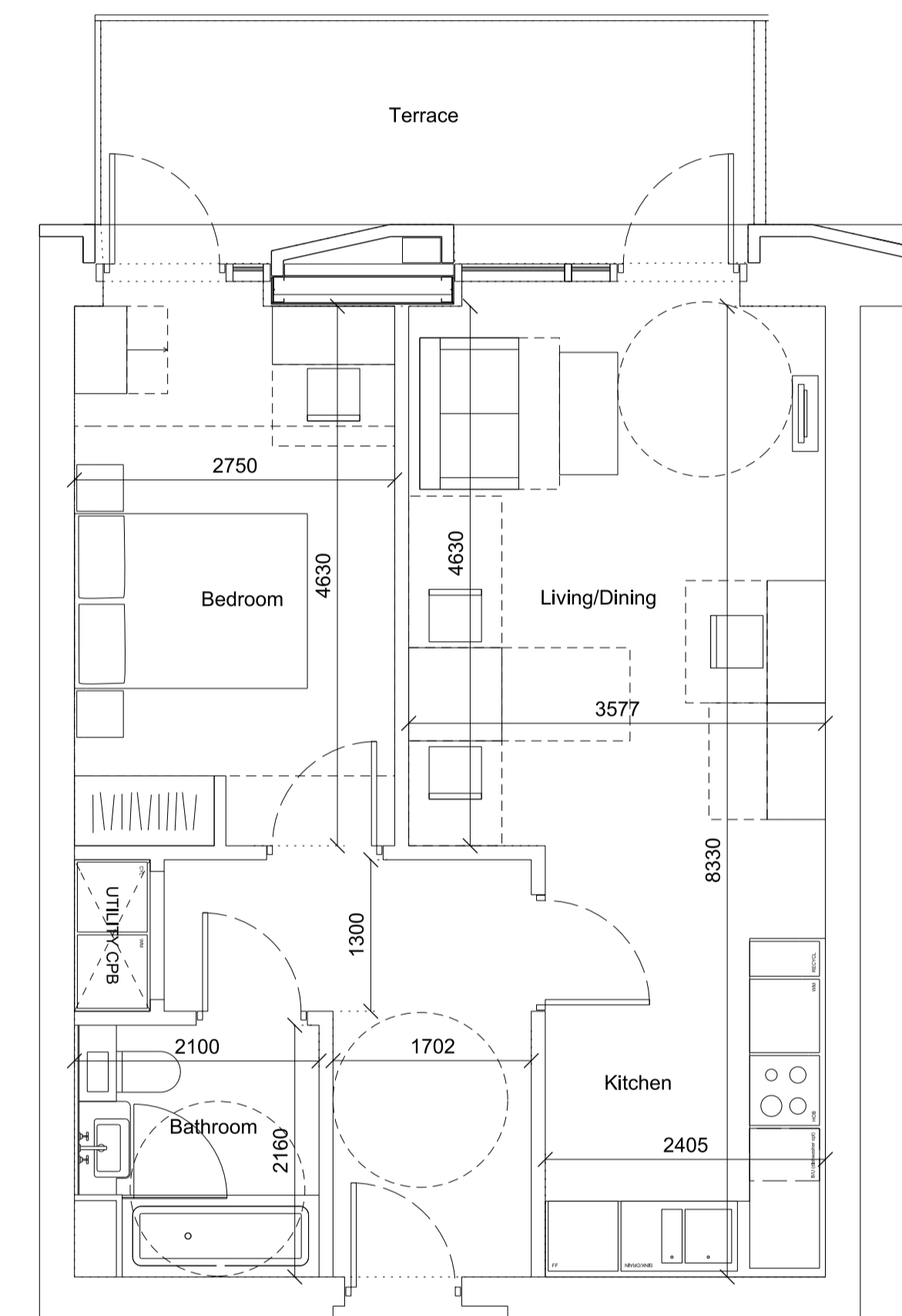
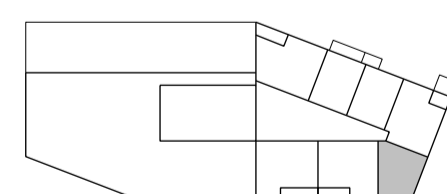
Private 01.03, 02.03, 03.03, 06.03, 07.03, 10.03, 11.03



02 P-ST-02 Private Studio 47.5 sqm

Unit Numbers:

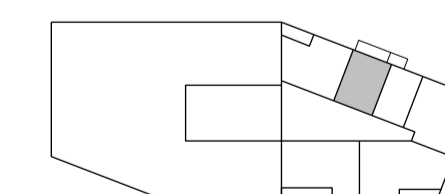
Private 05.05, 06.05, 07.05



03 P-01-01 Private 1 bed 2 person 54.5 sqm

Unit Numbers:

Private 01.02, 02.02, 03.02, 04.02, 05.02, 06.02, 07.02, 08.02, 09.02, 10.02



**Bennetts Associates Architects**

1 Rawstorne Place London EC1V 7NL  
 T +44 (0)20 7520 3300 F +44 (0)20 7520 3333  
 E mail@bennettsassociates.com

For Bennetts Associates' electronic information issue disclaimer -  
 www.bennettsassociates.com/informationanddisclaimer/

Project Project No. 1603  
**The Ugly Brown Building**  
 Reef Estates

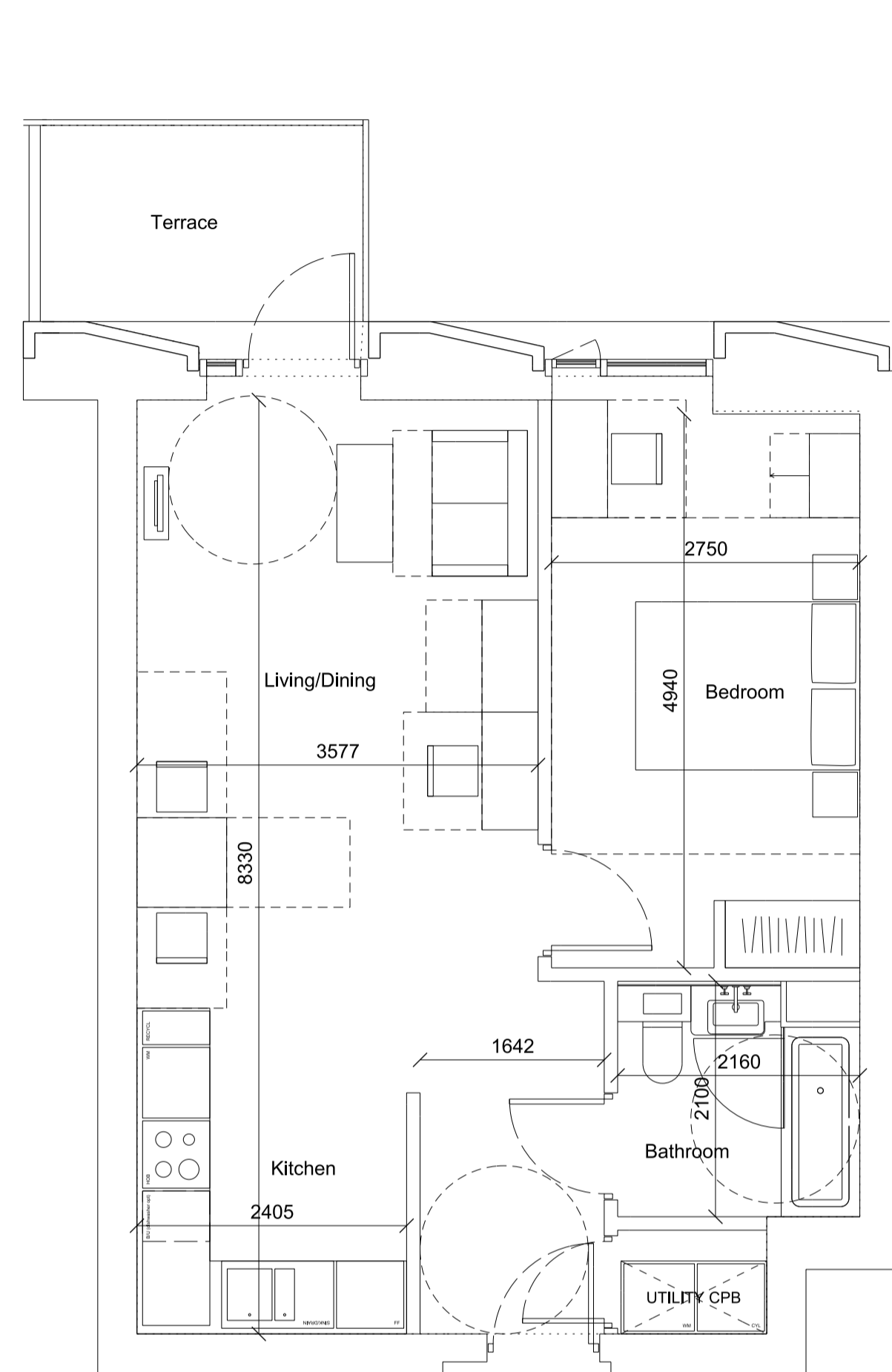
Drawing Title  
**Proposed**  
**Residential Accommodation Unit Types**

Drawing Number	Revision
1603_P_1034	B

Scale @ A3	Scale @A1	Revision Date
1 : 100	1 : 50	180308
		YY MM DD

Notes

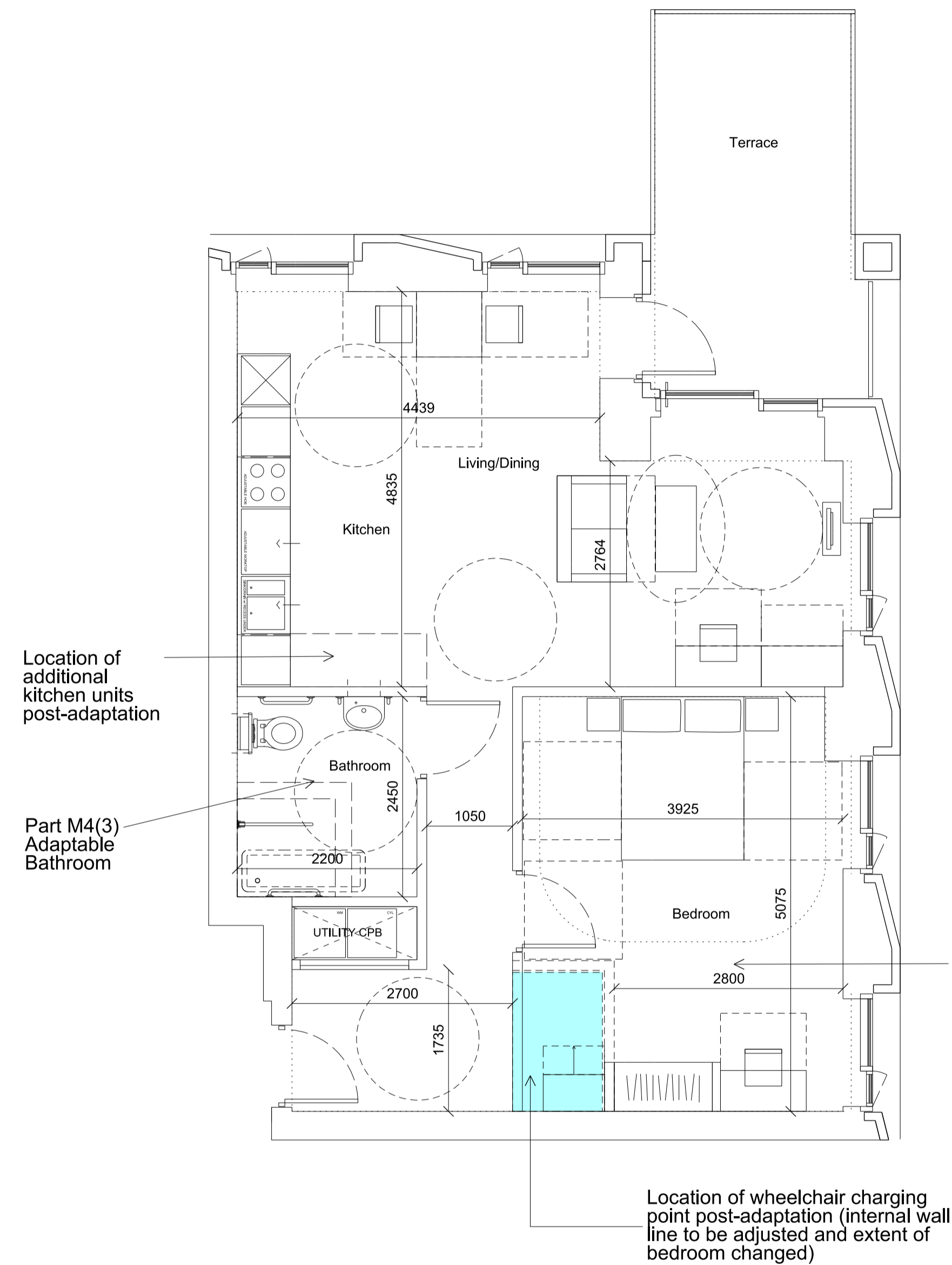
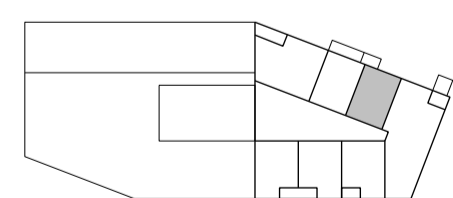
All units designed to AD Part M Vol1 M4(2) 2015  
 Wheelchair Accessible & Adaptable Dwellings  
 except where noted:  
 AD Part M4(3) Wheelchair User Accessible Dwelling  
 AD Part M4(3) Wheelchair Adaptable Dwelling



01 P-01-02 Private 1 bed 2 person 53.3 sqm

Unit Numbers:

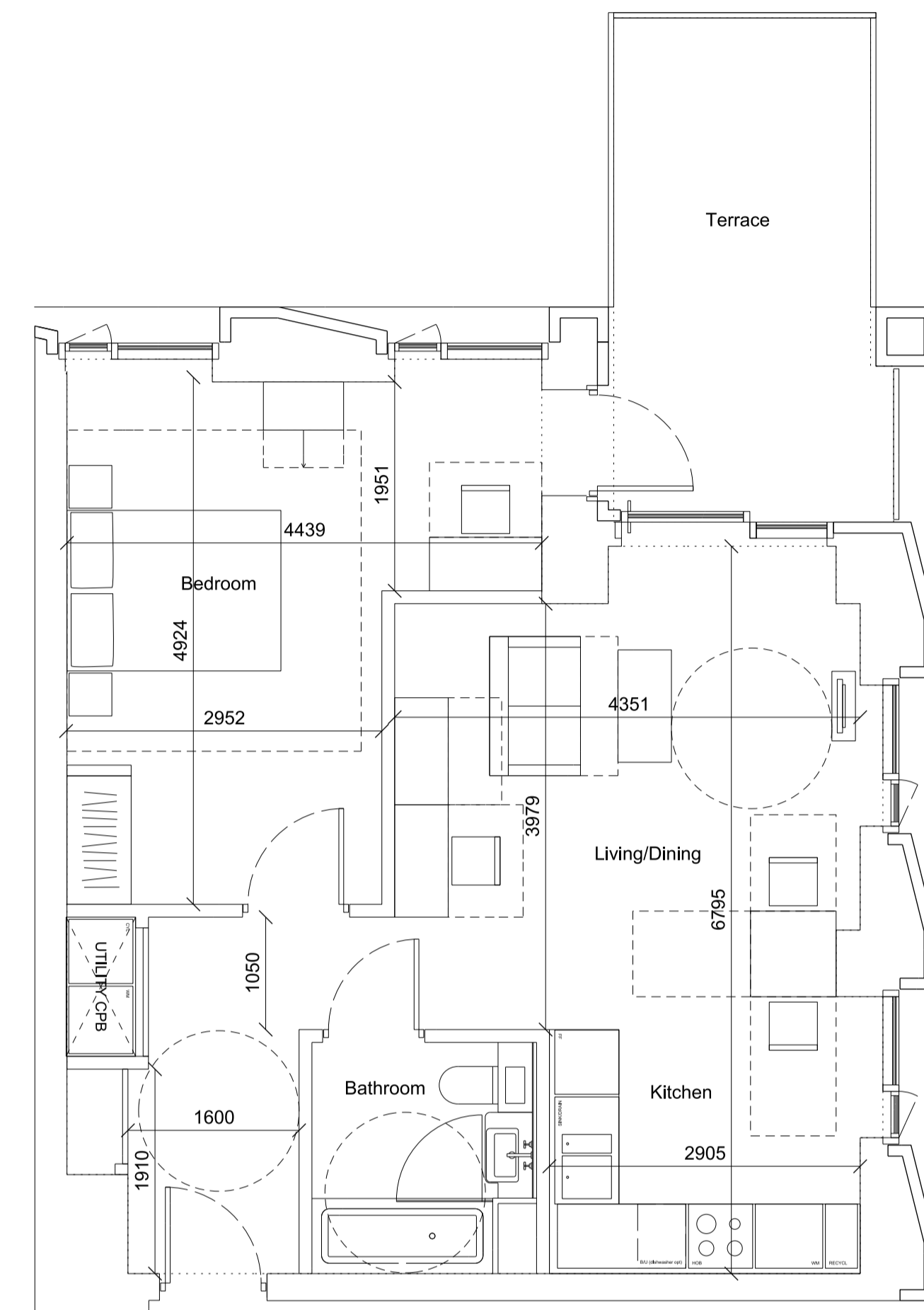
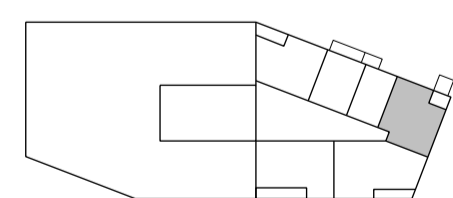
Private 04.03, 05.03, 08.03, 09.03



02 P-01-03 Private 1 bed 2 person Wheelchair Adaptable 67.2 sqm

Unit Numbers:

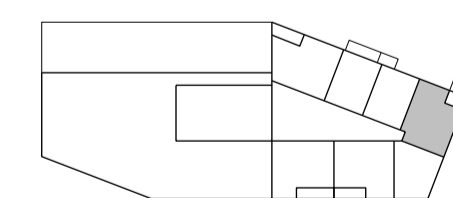
Private 04.04



03 P-01-04 Private 1 bed 2 person 57.2 sqm

Unit Numbers:

Private 05.04



**Bennetts Associates Architects**

1 Rawstorne Place London EC1V 7NL  
 T +44 (0)20 7520 3300 F +44 (0)20 7520 3333  
 E mail@bennettsassociates.com

For Bennetts Associates' electronic information issue disclaimer -  
 www.bennettsassociates.com/informationanddisclaimer/

Project 1603 Project No. 1603

**The Ugly Brown Building**  
 Reef Estates

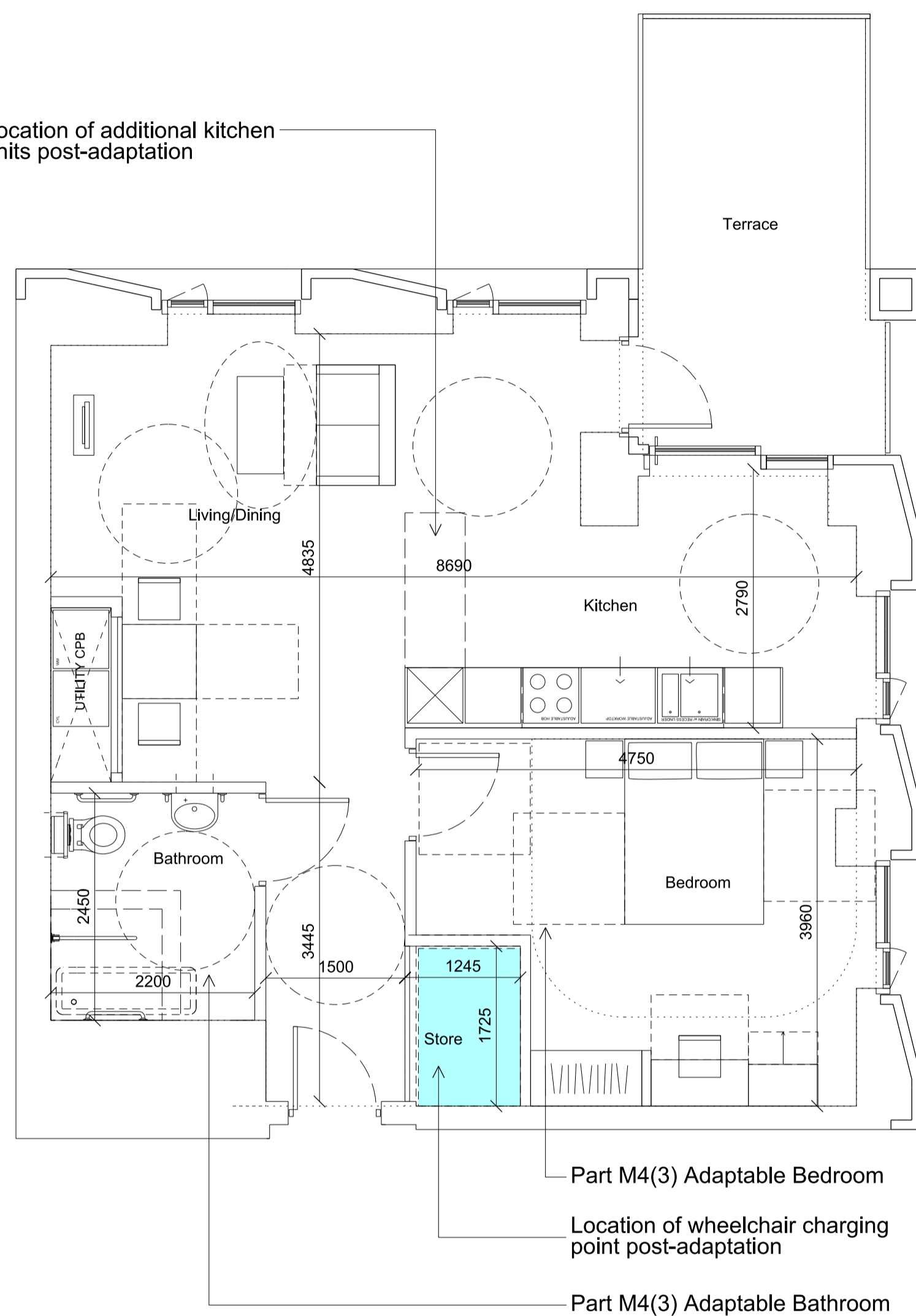
Drawing Title  
 Proposed  
 Residential Accommodation Unit Types

Drawing Number  
 1603\_P\_1035

Revision  
 B

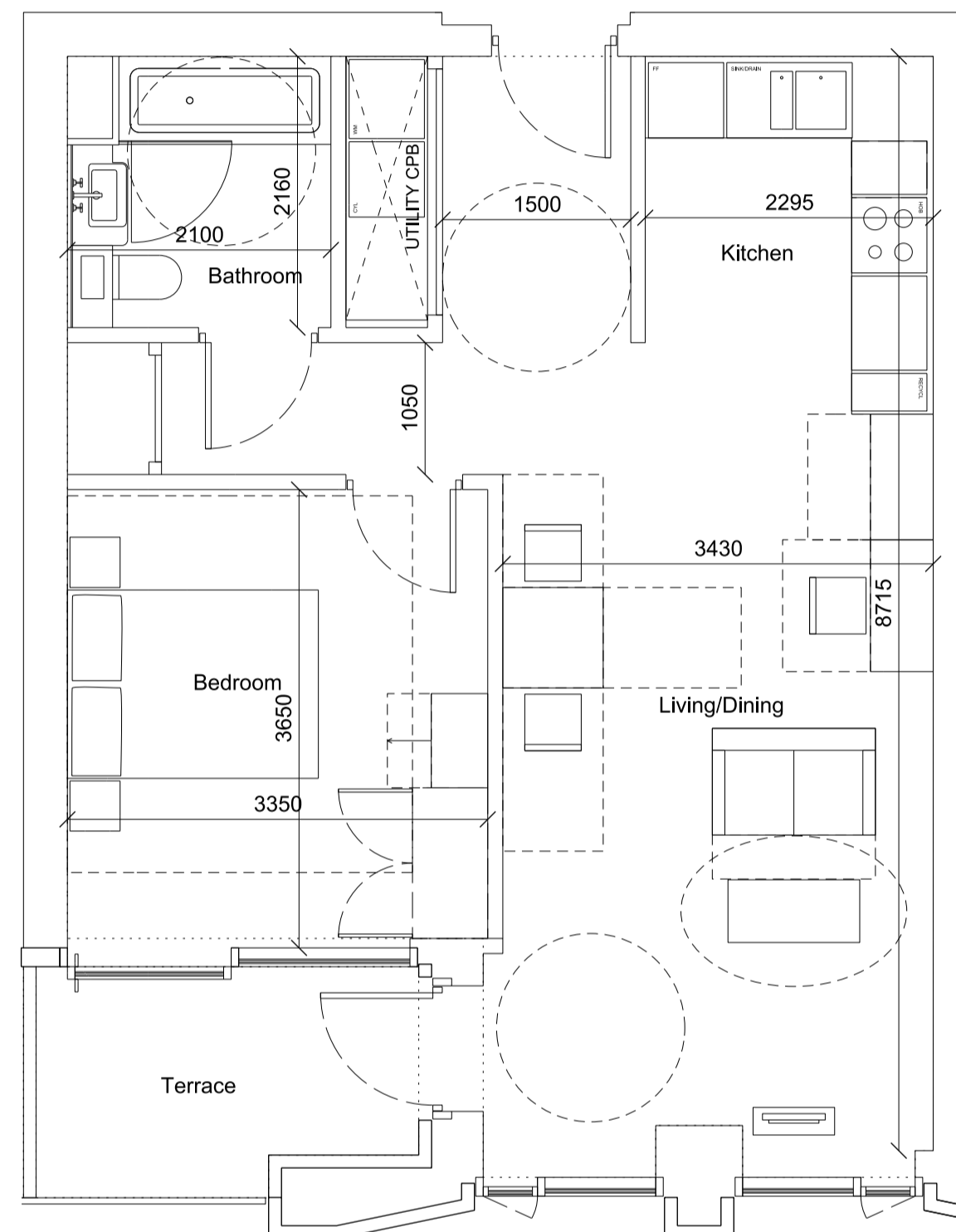
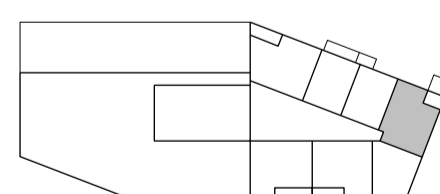
Scale @ A3 1 : 100  
 Scale @A1 1 : 50  
 Revision Date 180308  
 YY MM DD

Location of additional kitchen units post-adaptation



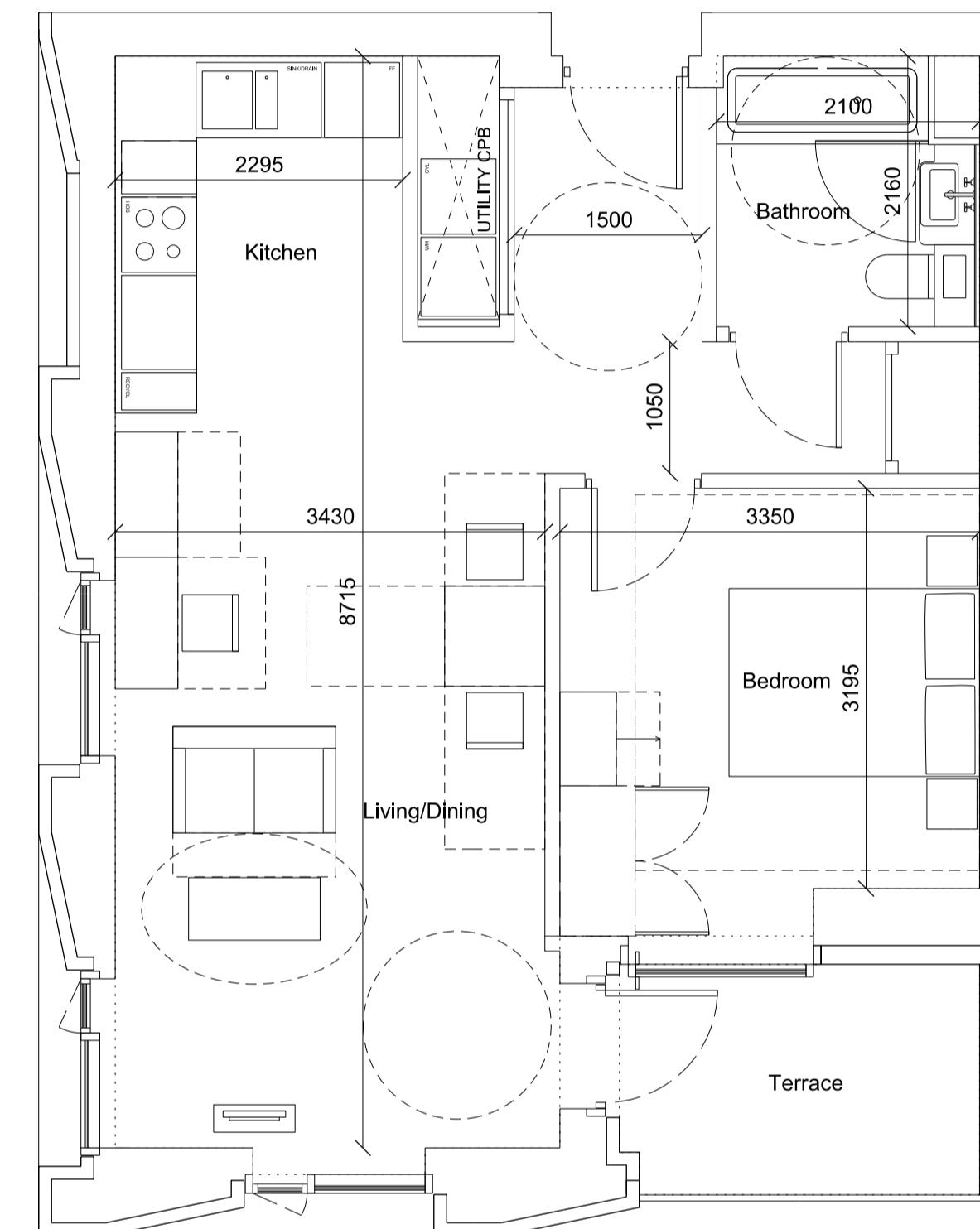
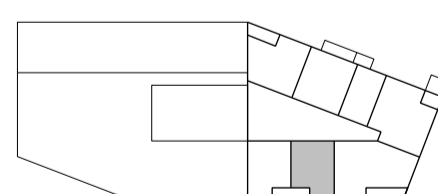
01 P-01-05 Private 1 bed 2 person Wheelchair Adaptable 66.4 sqm

Unit Numbers:  
 Private 06.04, 07.04



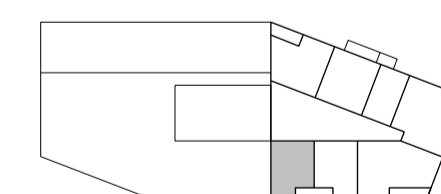
02 P-01-06 Private 1 bed 2 person 54.6 sqm

Unit Numbers:  
 Private 10.06, 11.06



03 P-01-07 Private 1 bed 2 person 53.8 sqm

Unit Numbers:  
 Private 10.07



Notes

All units designed to AD Part M Vol1 M4(2) 2015 Wheelchair Accessible & Adaptable Dwellings except where noted:  
 AD Part M4(3) Wheelchair User Accessible Dwelling  
 AD Part M4(3) Wheelchair Adaptable Dwelling

**Bennetts Associates Architects**

1 Rawstorne Place London EC1V 7NL  
 T +44 (0)20 7520 3300 F +44 (0)20 7520 3333  
 E mail@bennettsassociates.com

For Bennetts Associates' electronic information issue disclaimer - www.bennettsassociates.com/informationanddisclaimer/

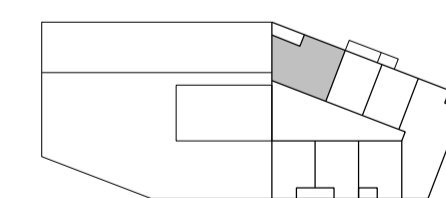
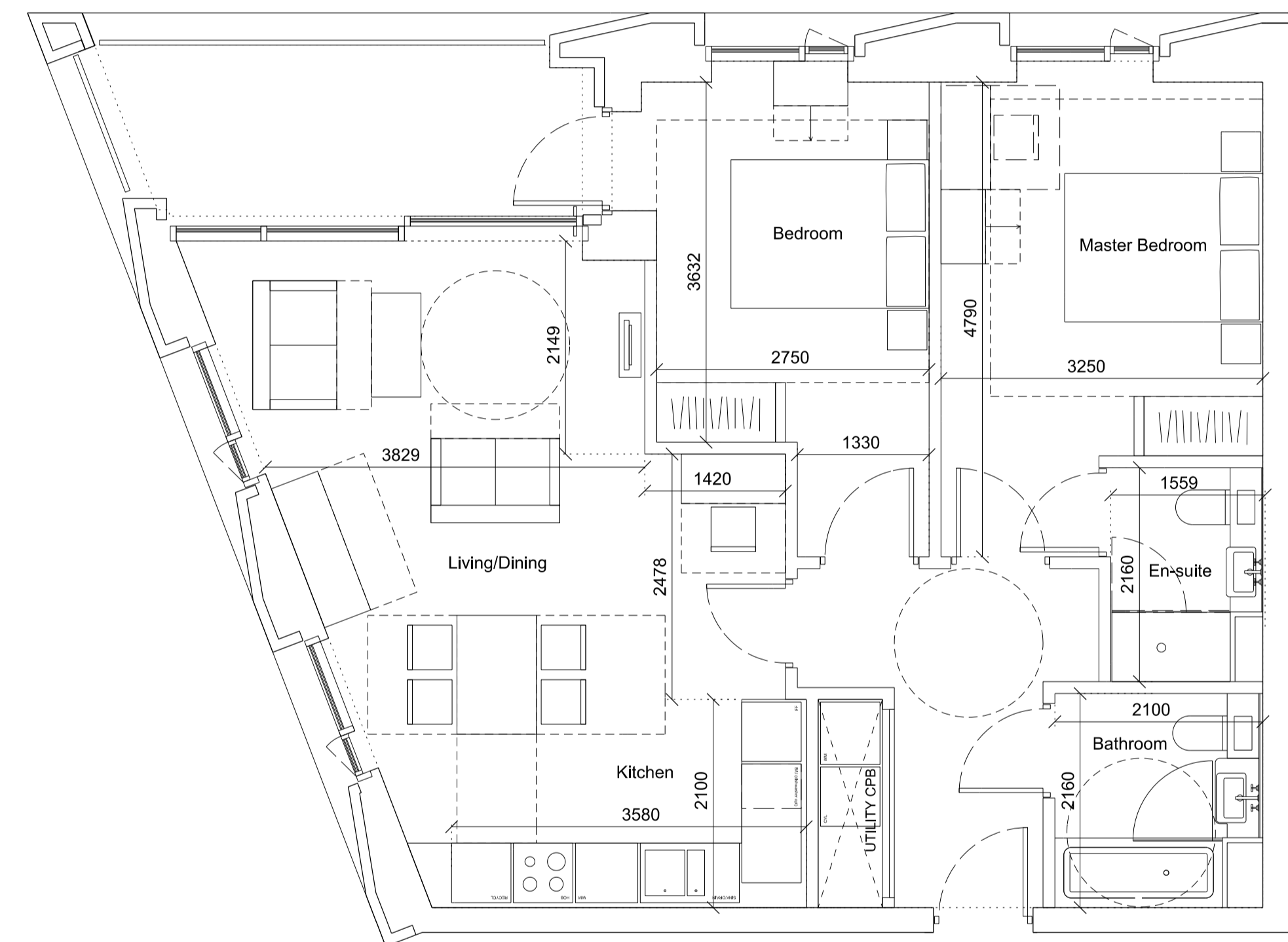
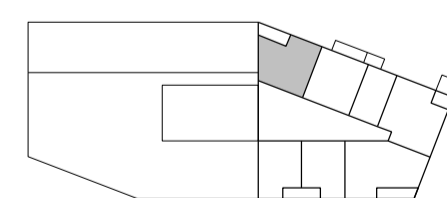
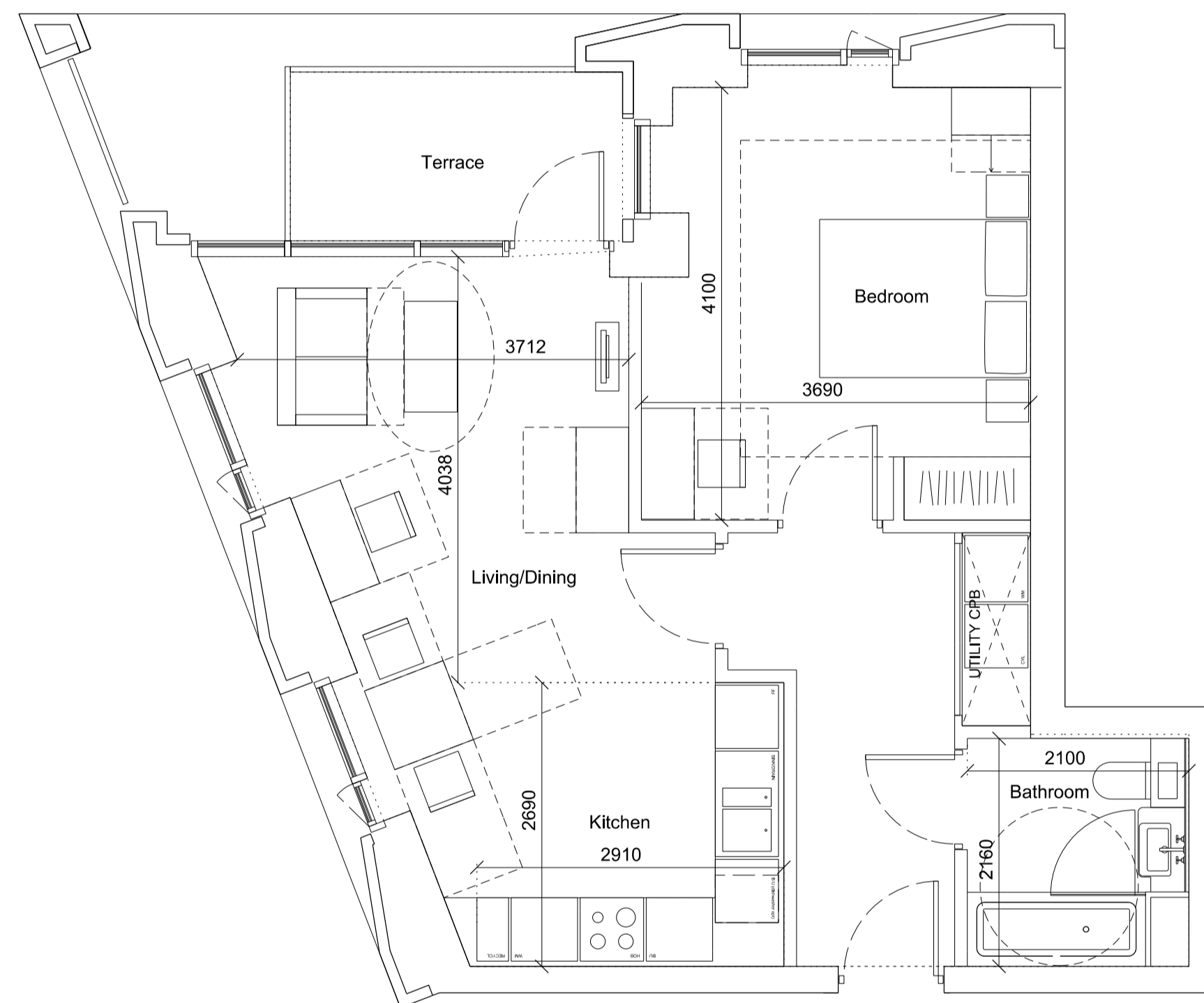
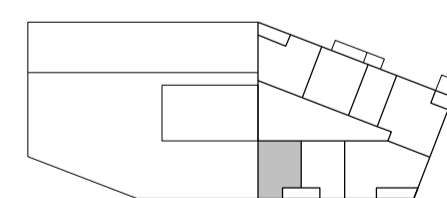
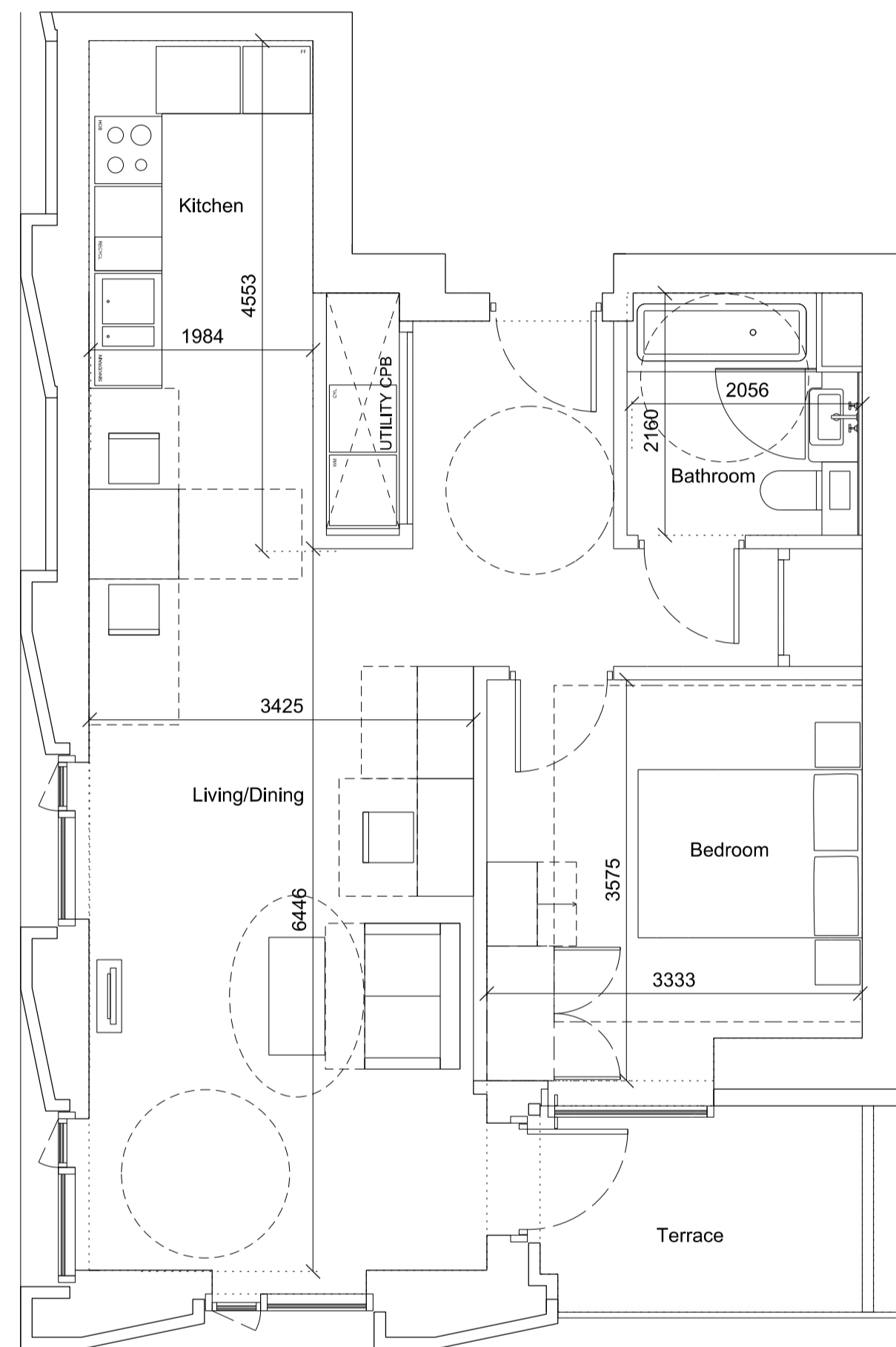
Project **The Ugly Brown Building** Project No. 1603  
 Reef Estates

Drawing Title  
**Proposed Residential Accommodation Unit Types**

Drawing Number  
**1603\_P\_1036**

Revision  
**B**

Scale @ A3 1 : 100  
 Scale @ A1 1 : 50  
 Revision Date **180308**  
 YY MM DD



Notes

All units designed to AD Part M Vol1 M4(2) 2015  
Wheelchair Accessible & Adaptable Dwellings  
except where noted:  
AD Part M4(3) Wheelchair User Accessible Dwelling  
AD Part M4(3) Wheelchair Adaptable Dwelling

**Bennetts Associates Architects**

1 Rawstorne Place London EC1V 7NL  
T +44 (0)20 7520 3300 F +44 (0)20 7520 3333  
E mail@bennettsassociates.com

For Bennetts Associates' electronic information issue disclaimer -  
www.bennettsassociates.com/informationanddisclaimer/

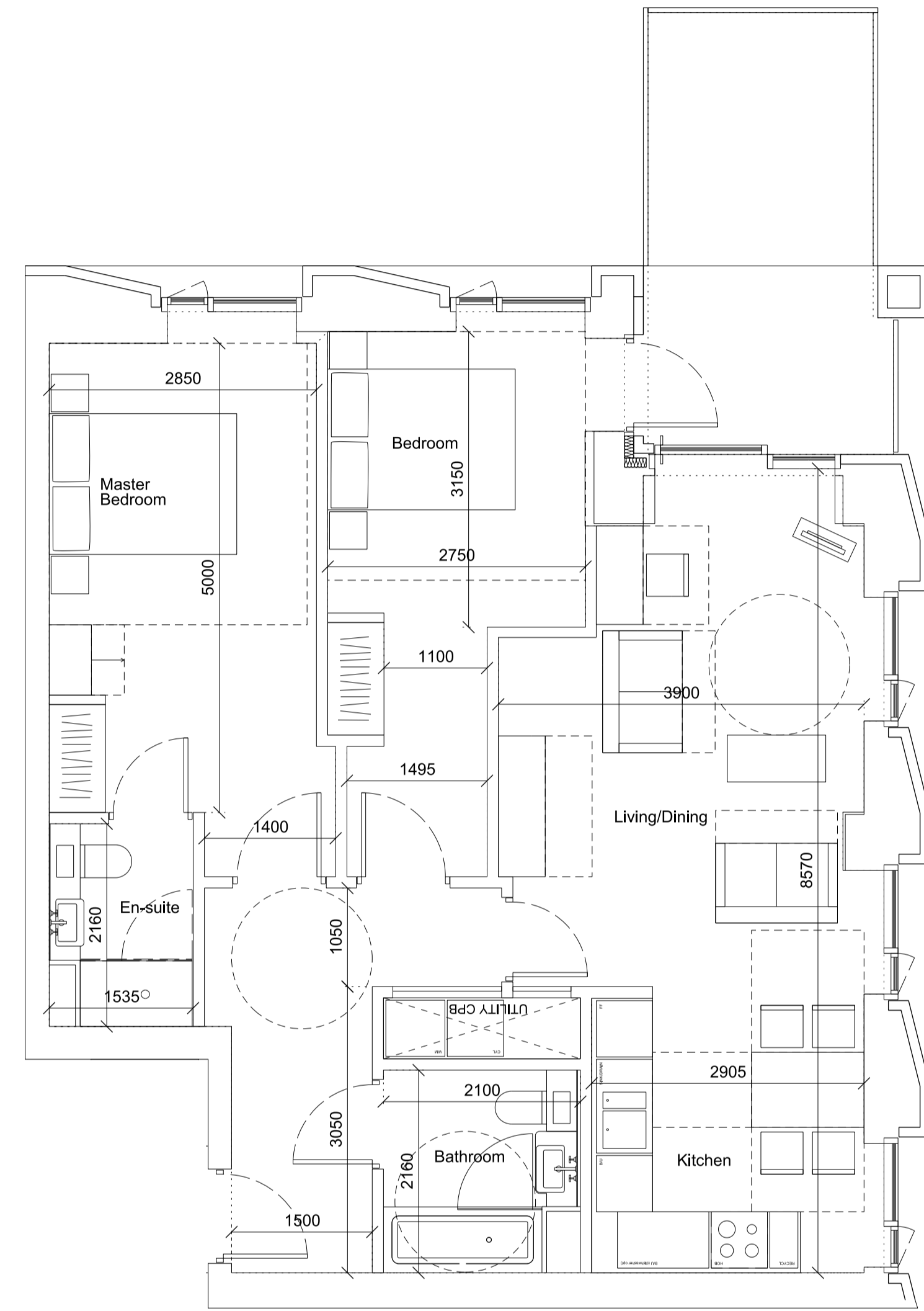
Project Project No. 1603  
**The Ugly Brown Building**  
Reef Estates

Drawing Title  
**Proposed**  
**Residential Accommodation Unit Types**

Drawing Number	Revision
1603_P_1037	B

Scale @ A3	Scale @A1	Revision Date
1 : 100	1 : 50	180308
		YY MM DD

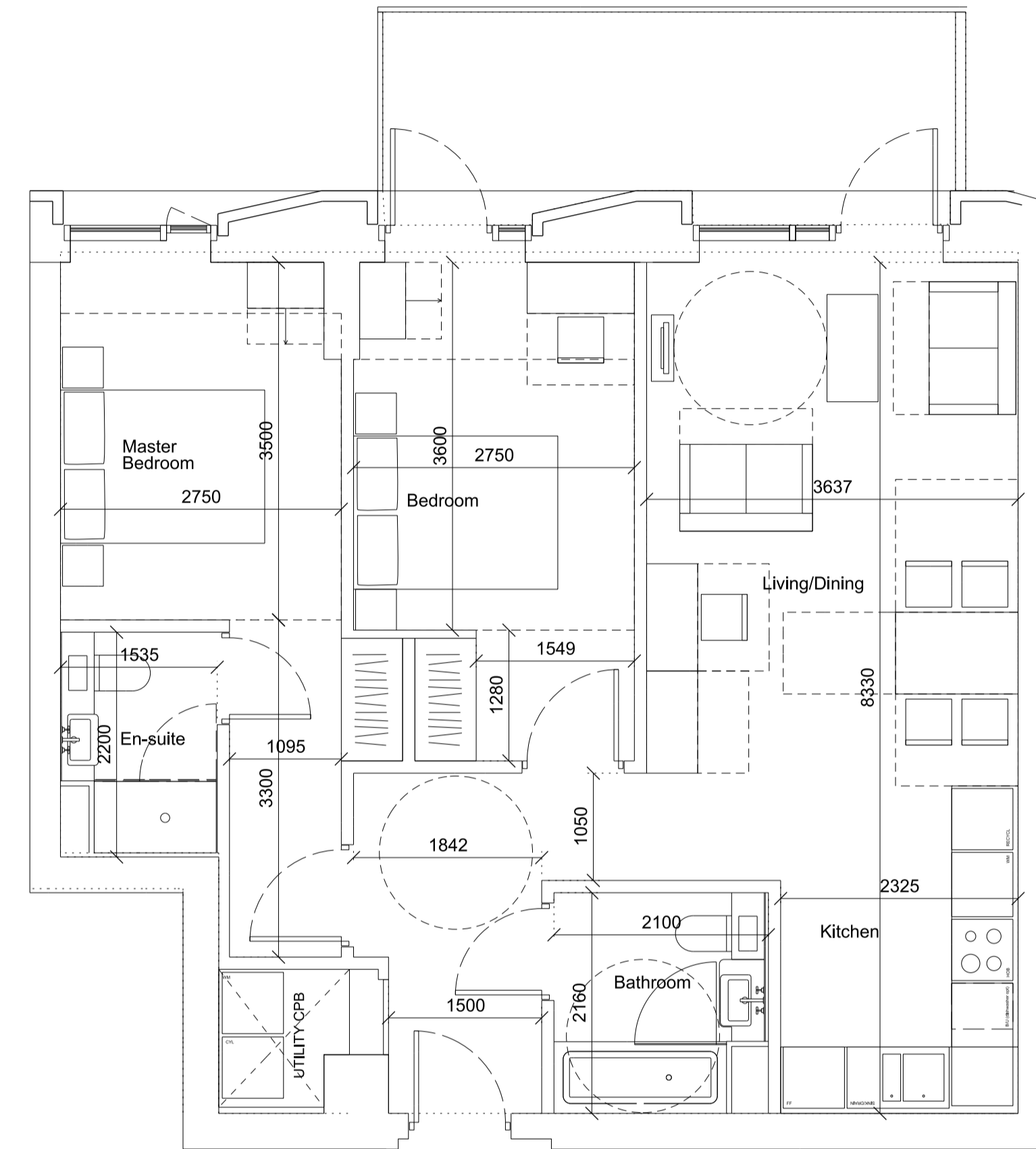
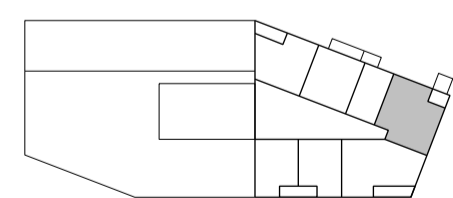




01 P-02-02 Private 2 bed 4 person 78.5 sqm

Unit Numbers:

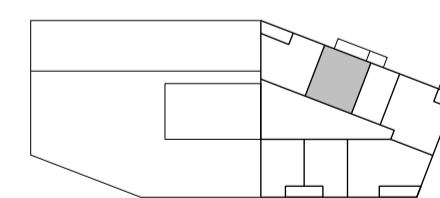
Private 01.04, 02.04, 03.04, 10.04, 11.04



02 P-02-03 Private 2bed 4 person 75.1sqm

Unit Numbers:

Private 11.02



Notes

All units designed to AD Part M Vol1 M4(2) 2015  
 Wheelchair Accessible & Adaptable Dwellings  
 except where noted:  
 AD Part M4(3) Wheelchair User Accessible Dwelling  
 AD Part M4(3) Wheelchair Adaptable Dwelling

**Bennetts Associates Architects**

1 Rawstorne Place London EC1V 7NL  
 T +44 (0)20 7520 3300 F +44 (0)20 7520 3333  
 E mail@bennettsassociates.com

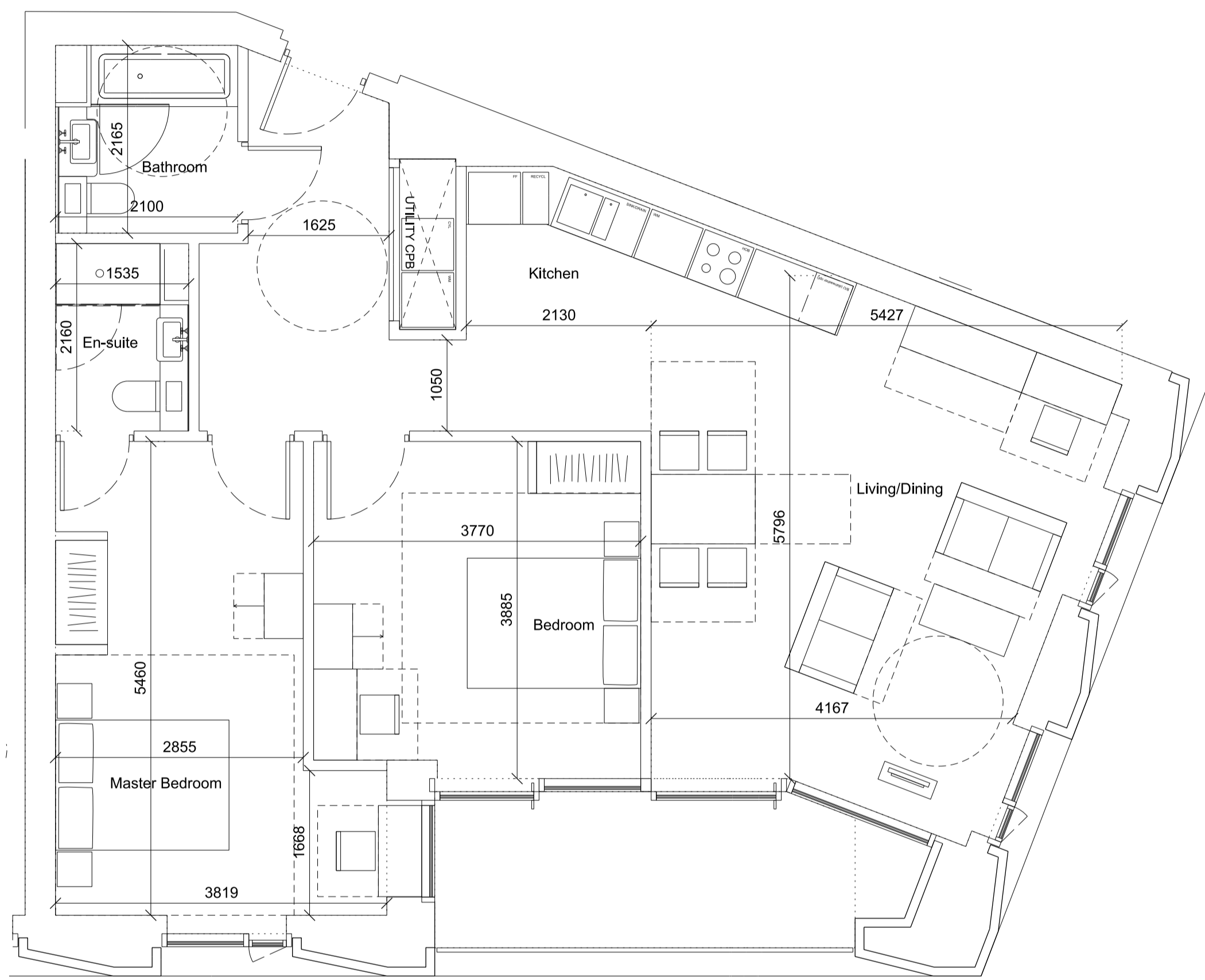
For Bennetts Associates' electronic information issue disclaimer -  
 www.bennettsassociates.com/informationanddisclaimer/

Project Project No. 1603  
**The Ugly Brown Building**  
 Reef Estates

Drawing Title  
**Proposed**  
**Residential Accommodation Unit Types**

Drawing Number Revision  
 1603\_P\_1038 /

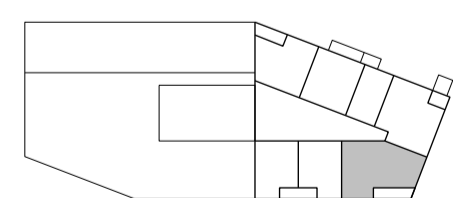
Scale @ A3 Scale @A1 Revision Date  
 1 : 100 1 : 50 180308  
 YY MM DD



01 P-02-04 Private 2 bed 4 person 88 sqm

Unit Numbers:

Private 10.05, 11.05

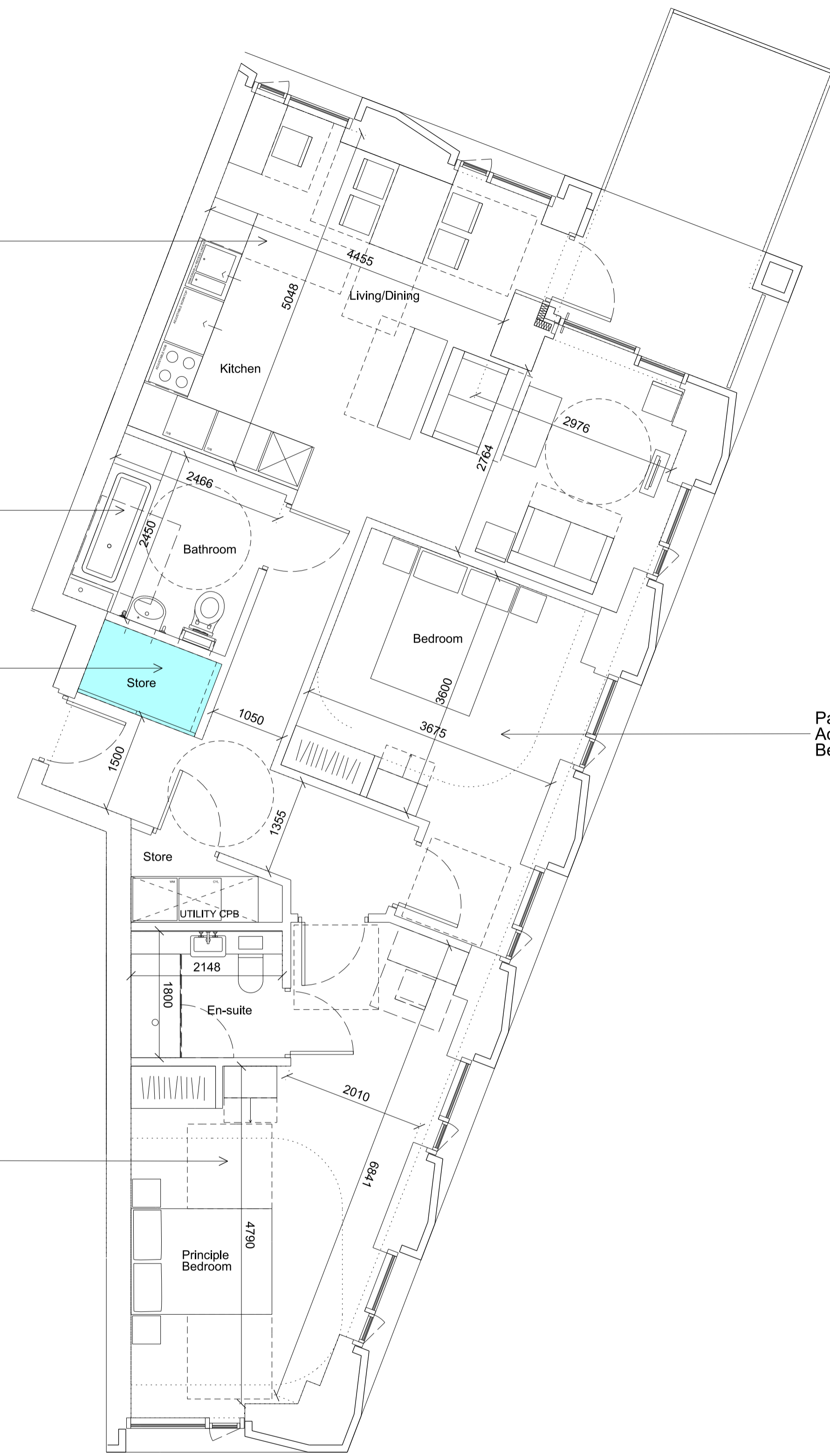


Location of future kitchen worktop extension

Part M4(3) Adaptable Bathroom

Location of wheelchair charging point post-adaptation (internal wall line to be adjusted)

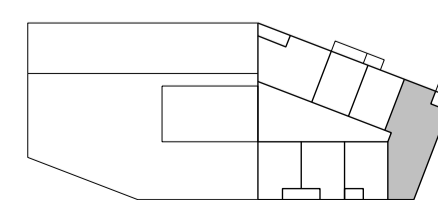
Part M4(3) Adaptable Bedroom



02 P-02-05 Private 2bed 4 person Wheelchair Adaptable 100sqm

Unit Numbers:

Private 08.04, 09.04



Notes

All units designed to AD Part M Vol1 M4(2) 2015 Wheelchair Accessible & Adaptable Dwellings except where noted:  
 AD Part M4(3) Wheelchair User Accessible Dwelling  
 AD Part M4(3) Wheelchair Adaptable Dwelling

**Bennetts Associates Architects**

1 Rawstorne Place London EC1V 7NL  
 T +44 (0)20 7520 3300 F +44 (0)20 7520 3333  
 E mail@bennettsassociates.com

For Bennetts Associates' electronic information issue disclaimer - www.bennettsassociates.com/informationanddisclaimer/

Project 1603 Project No. 1603  
**The Ugly Brown Building**  
 Reef Estates

Drawing Title  
 Proposed  
 Residential Accommodation Unit Types

Drawing Number 1603\_P\_1039 Revision /

Scale @ A3 1 : 100 Scale @A1 1 : 50 Revision Date 180308  
 YY MM DD