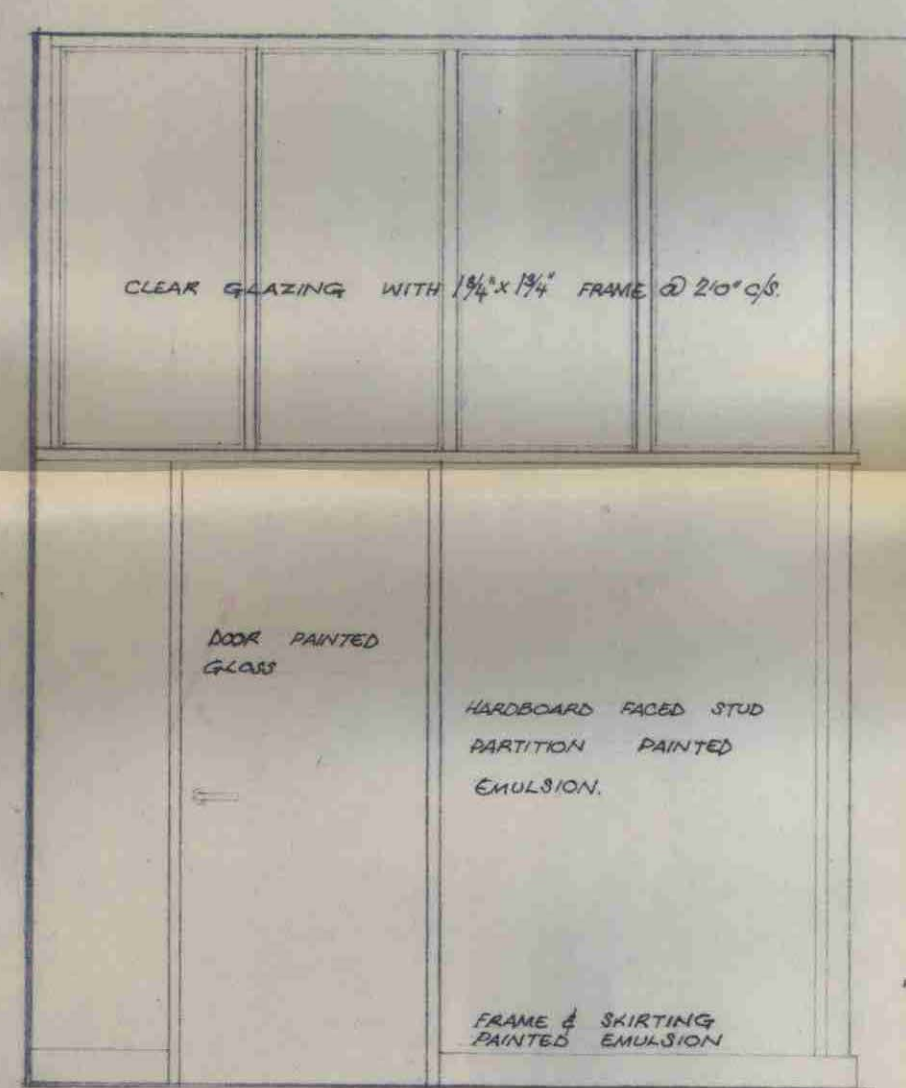
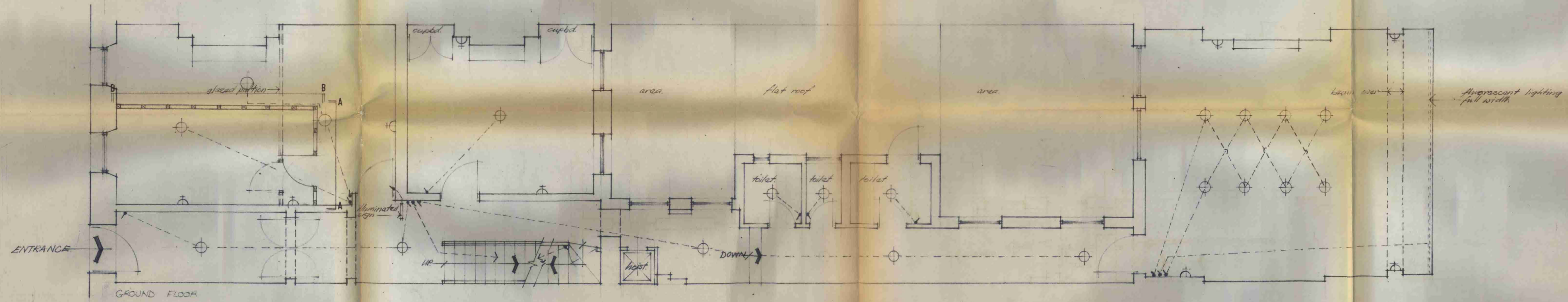
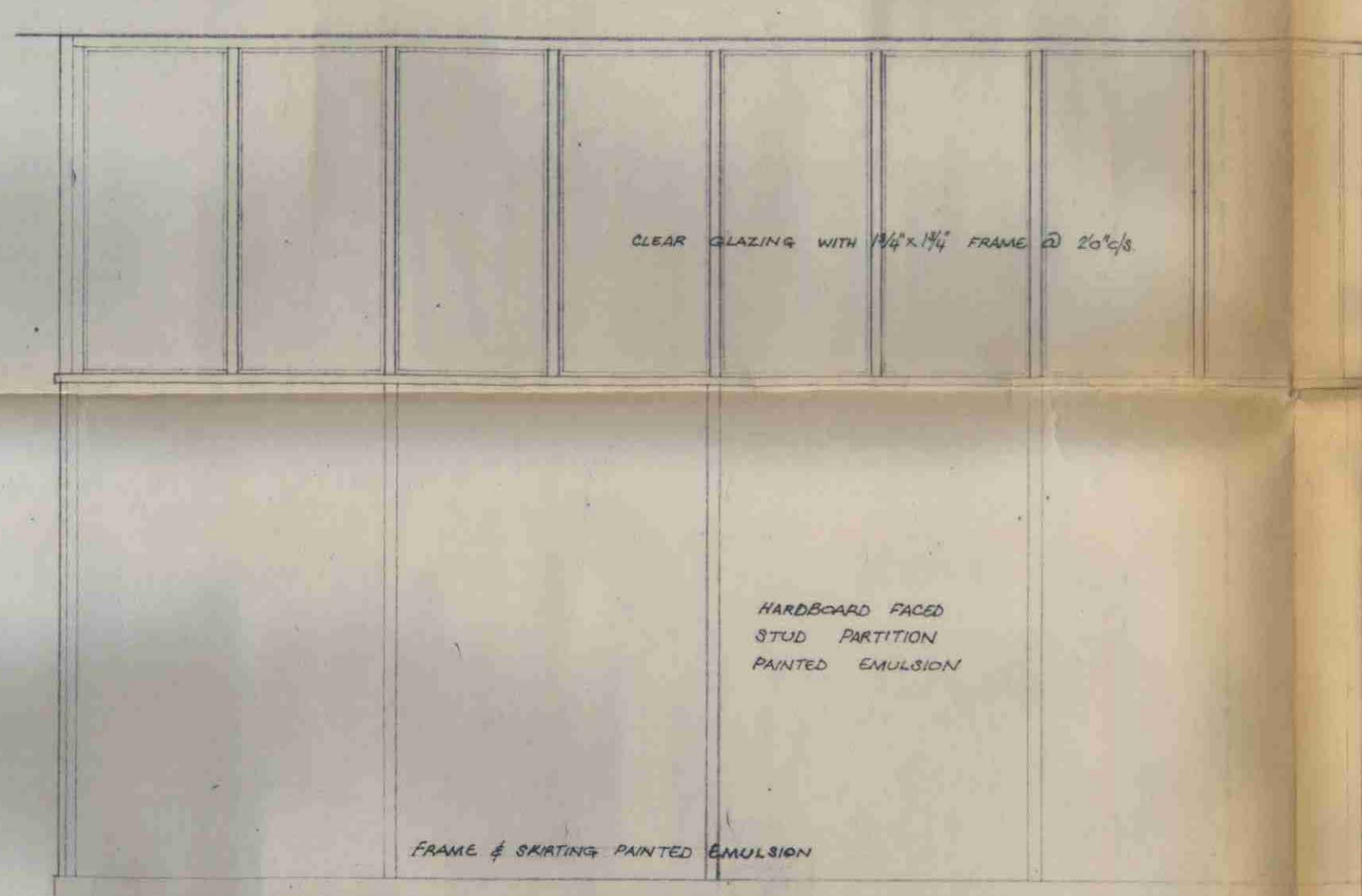


REVISIONS

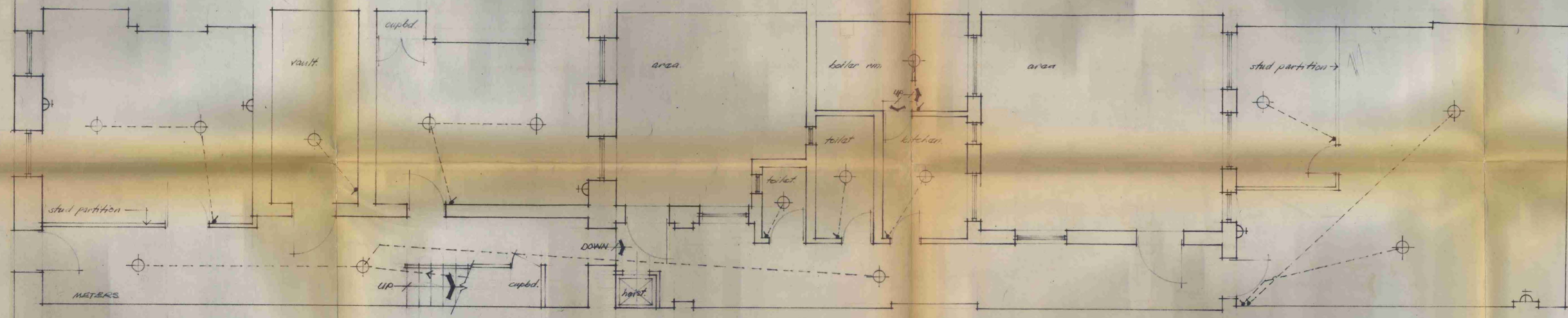
- A. PARTITION RE-ARRANGED IN GROUND FLOOR FRONT OFFICE 2-1-70
- B. 1/2"-10" ELEVATIONS OF STUD PARTITIONS IN GROUND FLOOR FRONT OFFICE ADDED 17-4-70



ELEVATION A-A



ELEVATION B-B



BASEMENT

LONDON BOROUGH OF CAMDEN
 APPROVED PLANS
 12 AUG 1970
 ON BEHALF OF THE COUNCIL

No 33 BEDFORD SQ
 LONDON W.C.1
 Basement & Ground floor plans.

Scale: 1/4" = 10'
 Date: Feb 68

Drawing Number: B.

Sir John Burnet, Tait and Partners
 Architects
 10 Bedford Square, London, W.C.1

CTP/N13/316/2/H0139