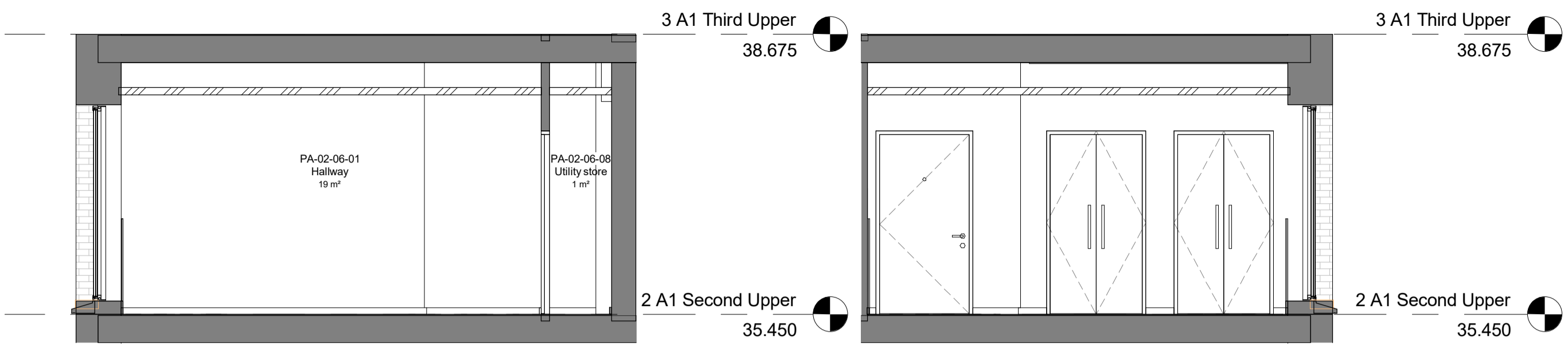


1 Flat type B1 Plan
1:50

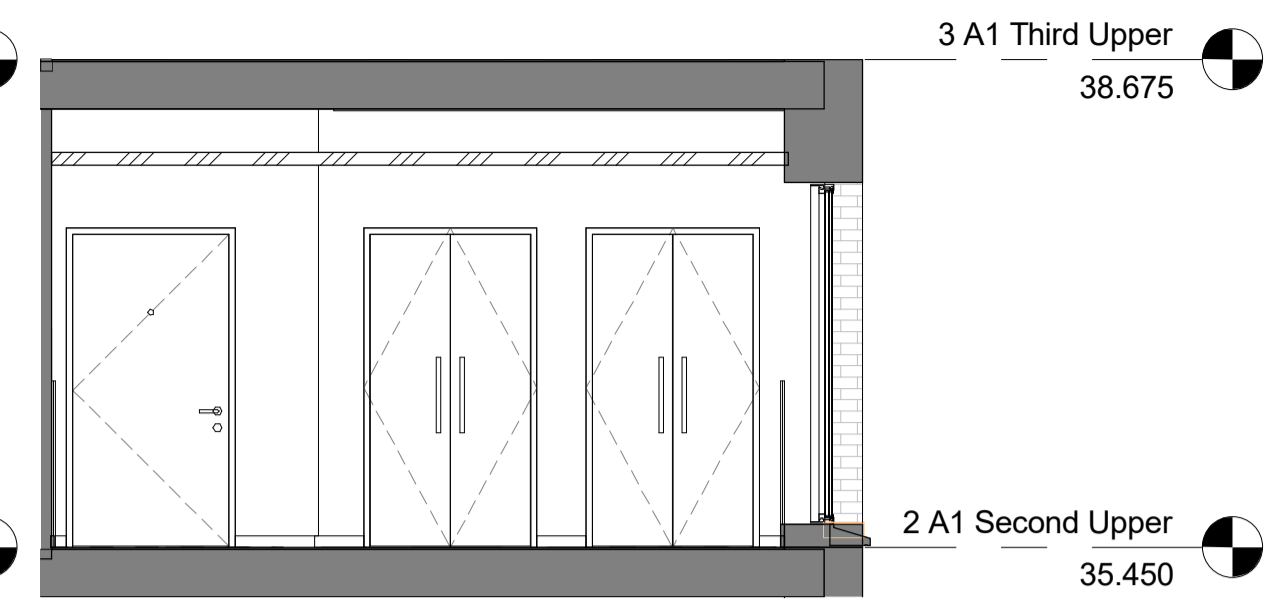
AG Flat Areas - P5				
Department	Occupancy	Number	Area	Name
PA-04-06				
P5a	3B5P	PA-04-06-01	12 m ²	Hallway
P5a	3B5P	PA-04-06-02	27 m ²	Living / dining
P5a	3B5P	PA-04-06-03	12 m ²	Kitchen
P5a	3B5P	PA-04-06-04	13 m ²	Double bedroom
P5a	3B5P	PA-04-06-05	13 m ²	Double bedroom
P5a	3B5P	PA-04-06-06	8 m ²	Single bedroom
P5a	3B5P	PA-04-06-07	5 m ²	Bathroom
P5a	3B5P	PA-04-06-08	3 m ²	WC
P5a	3B5P	PA-04-06-09	1 m ²	Utility store
P5a	3B5P	PA-04-06-10	1 m ²	Hall store
10			95 m ²	
PA-05-06				
P5b	3B5P	PA-05-06-01	11 m ²	Hallway
P5b	3B5P	PA-05-06-02	27 m ²	Living / dining

AG Flat Areas - P5				
Department	Occupancy	Number	Area	Name
P5b	3B5P	PA-05-06-03	12 m ²	Kitchen
P5b	3B5P	PA-05-06-04	13 m ²	Double bedroom
P5b	3B5P	PA-05-06-05	13 m ²	Double bedroom
P5b	3B5P	PA-05-06-06	8 m ²	Single bedroom
P5b	3B5P	PA-05-06-07	5 m ²	Bathroom
P5b	3B5P	PA-05-06-08	3 m ²	WC
P5b	3B5P	PA-05-06-09	1 m ²	Utility store
P5b	3B5P	PA-05-06-10	1 m ²	Hall store
10			95 m ²	
PA-06-03				
P5c	3B5P	PA-06-03-01	12 m ²	Hallway
P5c	3B5P	PA-06-03-02	27 m ²	Living / dining
P5c	3B5P	PA-06-03-03	12 m ²	Kitchen
P5c	3B5P	PA-06-03-04	13 m ²	Double bedroom

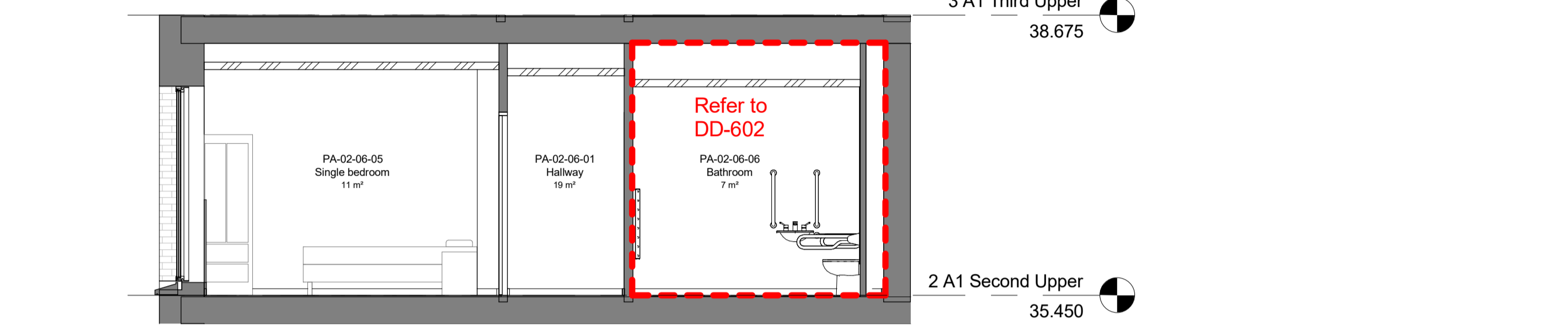
AG Flat Areas - P5				
Department	Occupancy	Number	Area	Name
P5c	3B5P	PA-06-03-05	13 m ²	Double bedroom
P5c	3B5P	PA-06-03-06	8 m ²	Single bedroom
P5c	3B5P	PA-06-03-07	5 m ²	Bathroom
P5c	3B5P	PA-06-03-08	3 m ²	WC
P5c	3B5P	PA-06-03-09	1 m ²	Utility store
P5c	3B5P	PA-06-03-11	1 m ²	Hall store
10			95 m ²	



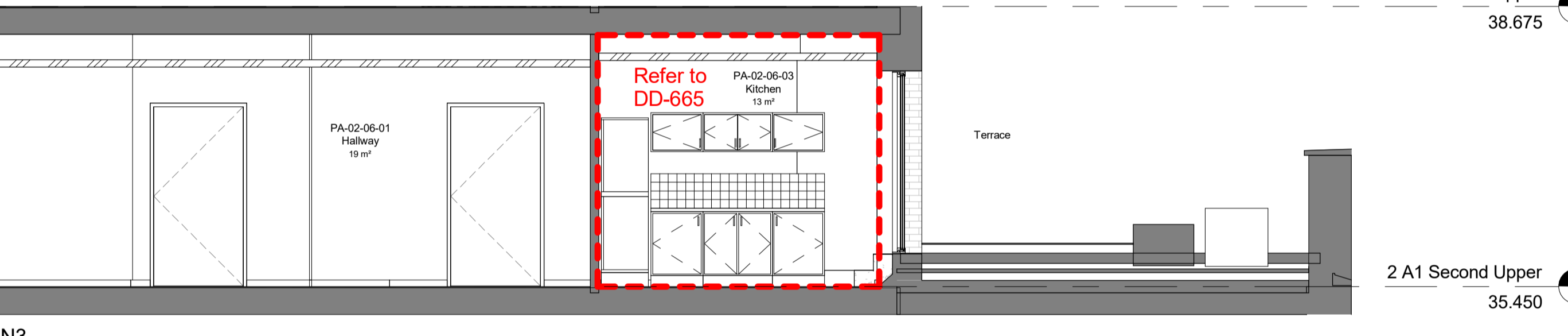
2 IE-B1-E1
1:50



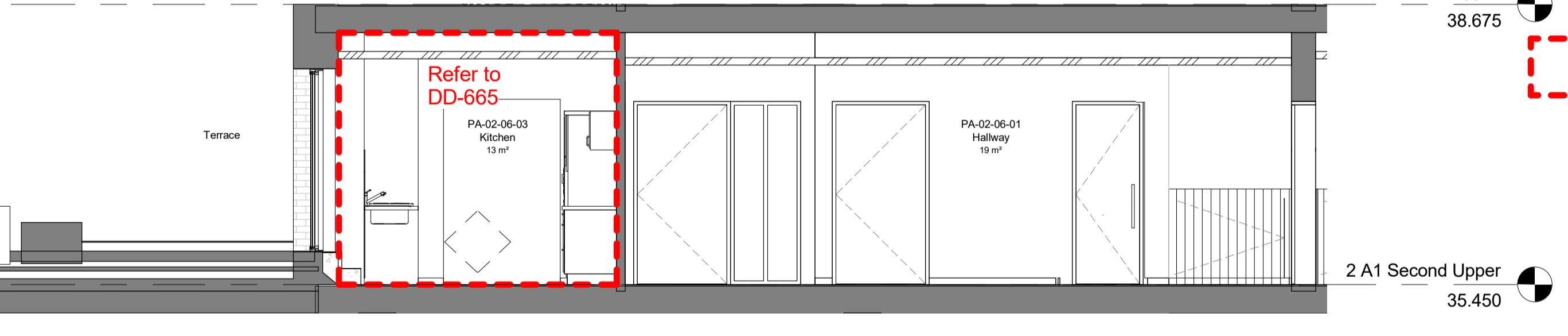
3 IE-B1-W1
1:50



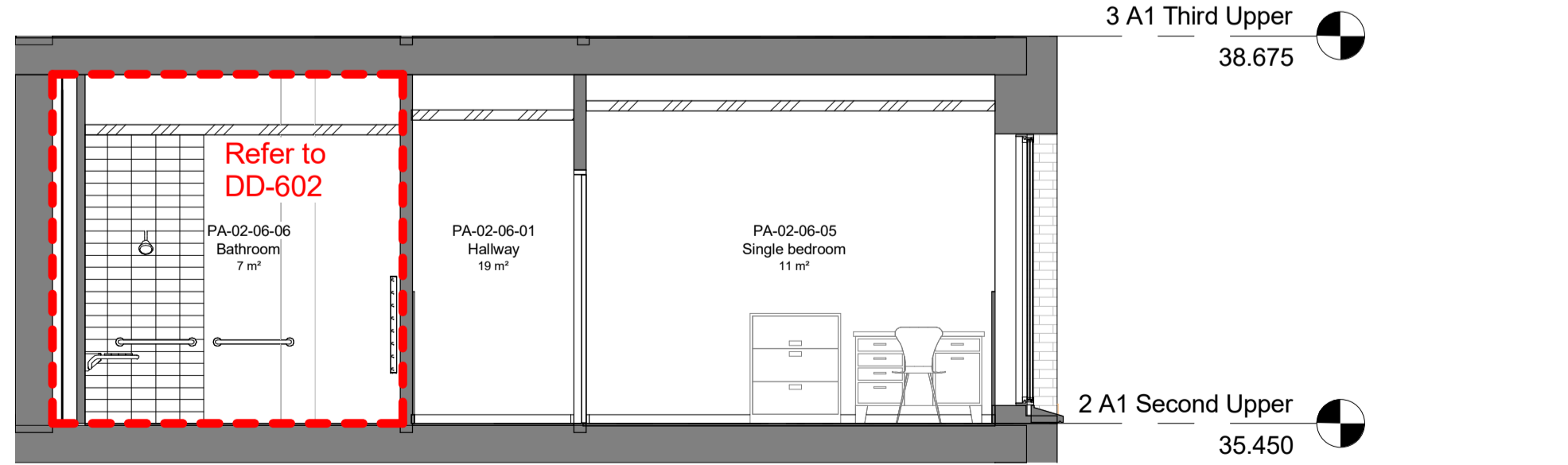
4 IE-B1-E2
1:50



6 IE-B1-N3
1:50



7 IE-B1-S3
1:50



5 IE-B1-W2
1:50

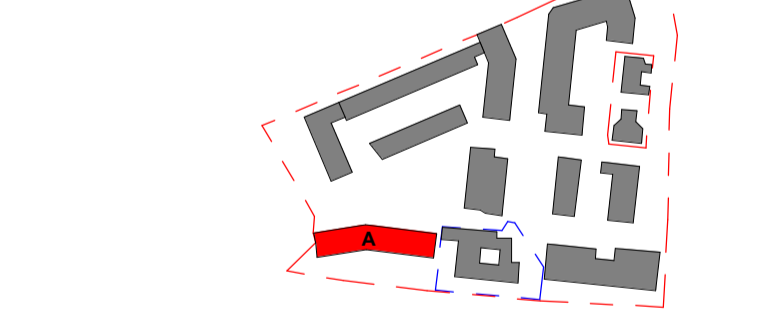
Notes
This drawing is © Archtype Ltd
Check this drawing is the latest revision.
Do not scale from this drawing.
Do not use the information on this drawing without checking all dimensions on site.
Do not use any areas indicated for either valuation, purchase, sale or any other form of legally binding contract.
Do not reproduce any part of this drawing without prior written consent.
Report any discrepancies on this document to Archtype.
Read this drawing in conjunction with the associated models, specifications and related consultant's documents.
Equivalent products / materials may be Approved where the Employer's Requirements, Thermal Performance, Airtightness and any other specified performance requirements are met. Subject to Archtype 'Acceptance'.
All materials to be certified to comply with BS 14001 or BES6001 or be able to provide a Chain of Custody certificate in order to comply Code for Sustainable Homes. All timber species and sources used in this development are not to be listed on the CITES appendices for endangered or threatened species (appendix I, II or III)

Notes:
- All H/B areas here are taken from their DWGs issued with EIR - App. 6.
- The flat type GIA calculations include all internal walls and columns and area occupied by the reveals of windows when measured and assessed as the internal dominant face. This description above has been taken from the following document available online "RICS property measurement 1st edition, PGGuidance 2015". Note this document supersedes the previous rules of measurement from RICS and references GIA floor area calculations in comparison with IPMS 2 method of GIA measurement Code of Measuring Practice

Refer to DD-600 series for accurate setting out of bathrooms
Refer to DD-650 series for accurate setting out of kitchens
Elevations indicative here only

Rev	Date	Description	Drawn	Checked
5	28.02.18	Amendments for planning	CR	AMF
4	31.01.18	LAST ISSUE FOR CONSTRUCTION	IC	RW
3	06.12.16	Updates as response to Occupational Therapist comments	IC	RW
2	19.10.15	Issued for Building Control	CD	EB
1	11.08.15	Preliminary Issue	CD	EB

LAST ISSUE FOR CONSTRUCTION



LONDON: 020 7403 2889 WWW.ARCHTYPE.CO.UK HEREFORD: 01981 542 111

Client: Hill Partnership Ltd for Camden Council

Project: Agar Grove Block A

Drawing Title: Flat type B1

Project Originator Type Role Phase Block Unit Unique ID
T14011 - ART - DR - A - 1a A 00 - GA-733

Status: Code Suitability Description
A Issued for Construction

Revision: Code Revision Description
Z5 Revision description as above

Scale: As indicated @ A1 Date: 02 Feb 15

Drawn by: IC Checked by: CD

Internal Project Ref: 8090 Model Ref: AG-RAC2015-A-A