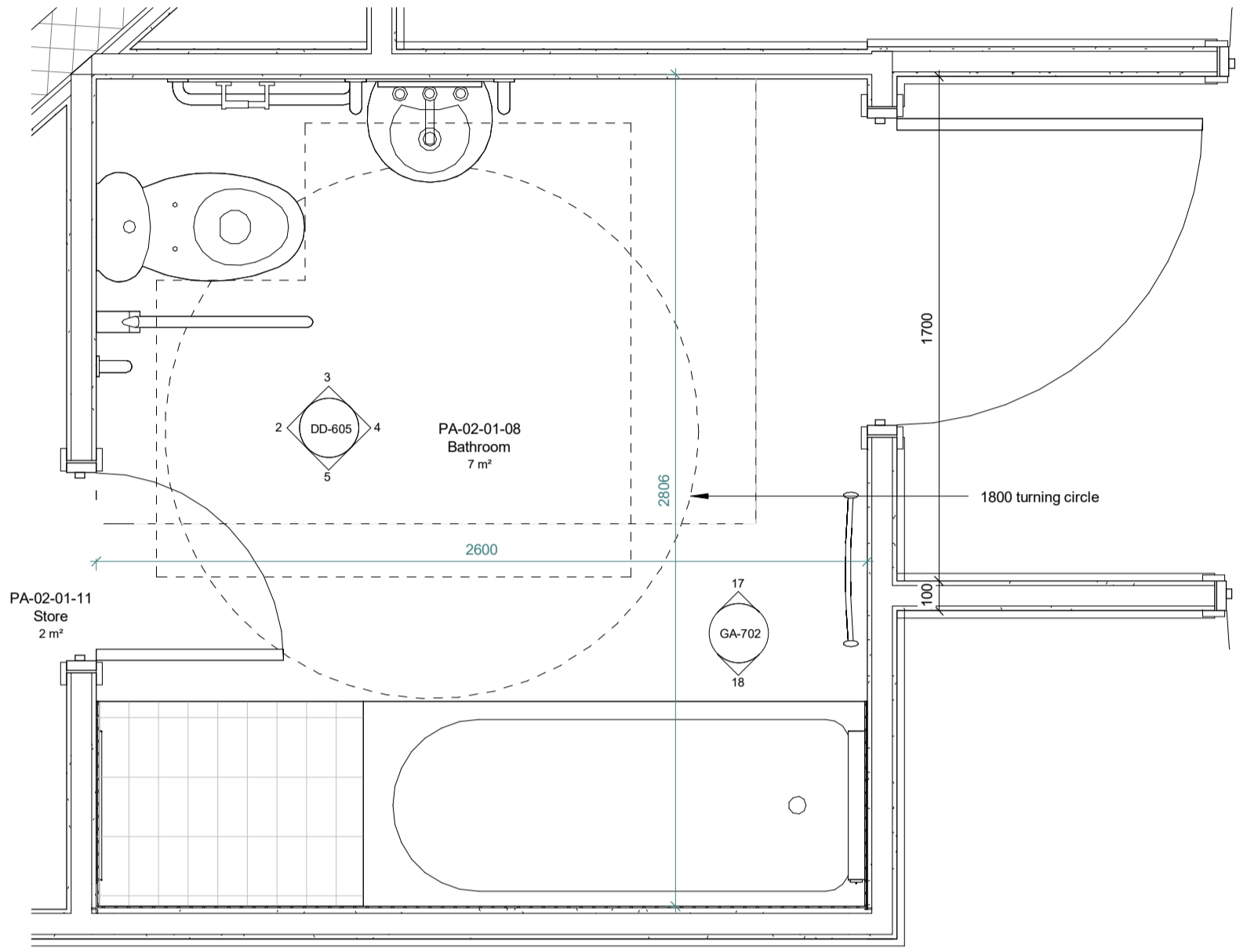




**Notes**  
 This drawing is © Archtype Ltd.  
 Check this drawing is the latest revision.  
 Do not scale from this drawing.  
 Do not use the information on this drawing without checking all dimensions on site.  
 Do not use any areas indicated for either valuation, purchase, sale or any other form of legally binding contract.  
 Do not reproduce any part of this drawing without prior written consent.  
 Report any discrepancies on this document to Archtype.  
 Read this drawing in conjunction with the associated models, specifications and related consultant's documents.  
 Equivalent products / materials may be Approved where the Employer's Requirements, Thermal Performance, Airtightness and any other specified performance requirements are met. Subject to Archtype "Acceptance".  
 All materials to be certified to comply with BS 14001 or BES6001 or be able to provide a Chain of Custody certificate in order to comply Code for Sustainable Homes. All timber species and sources used in this development are not to be listed on the CITES appendices for endangered or threatened species (appendix I, II or III)

**NOTE:**  
 Refer to M&E information for access panel locations and heights to maintain SVPs

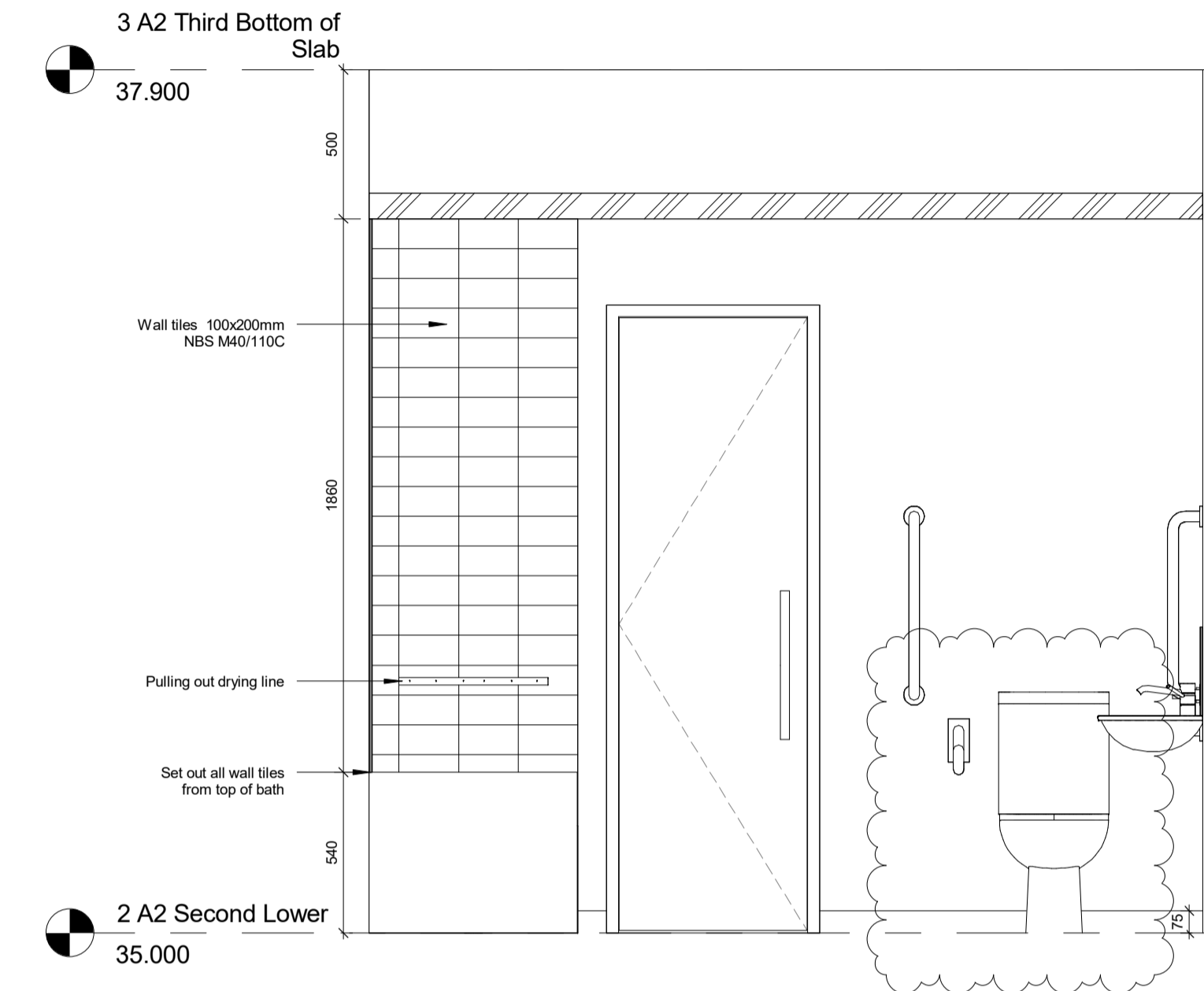
**NOTE:**  
 Tile setting out as per typical tiling. Drawing only indicative of tile alignment, not setting out.



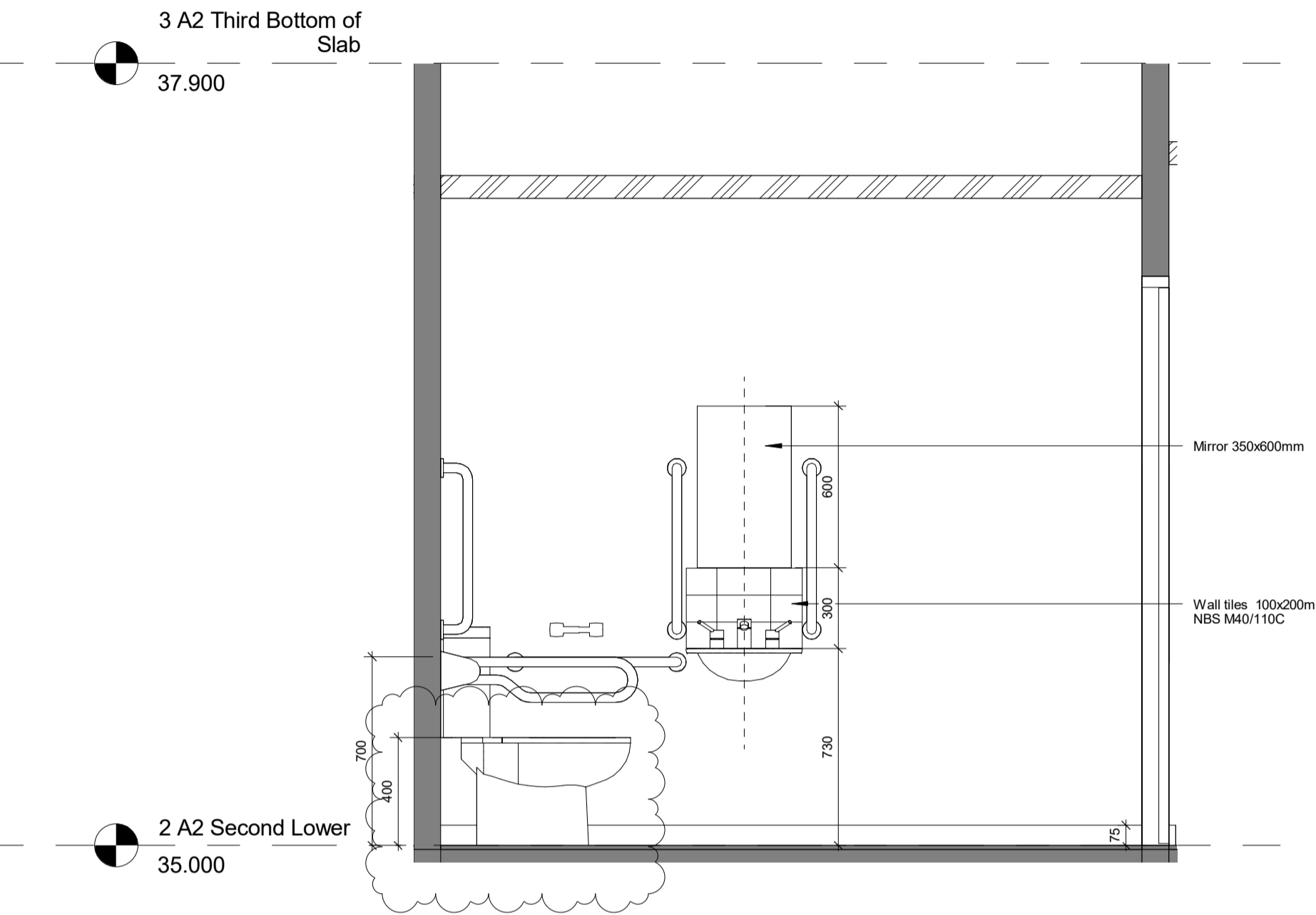
1 Flat type R1 Accessible Bathroom Plan  
 1 : 20

**NOTE:**  
 Bathroom type present in flat type R1

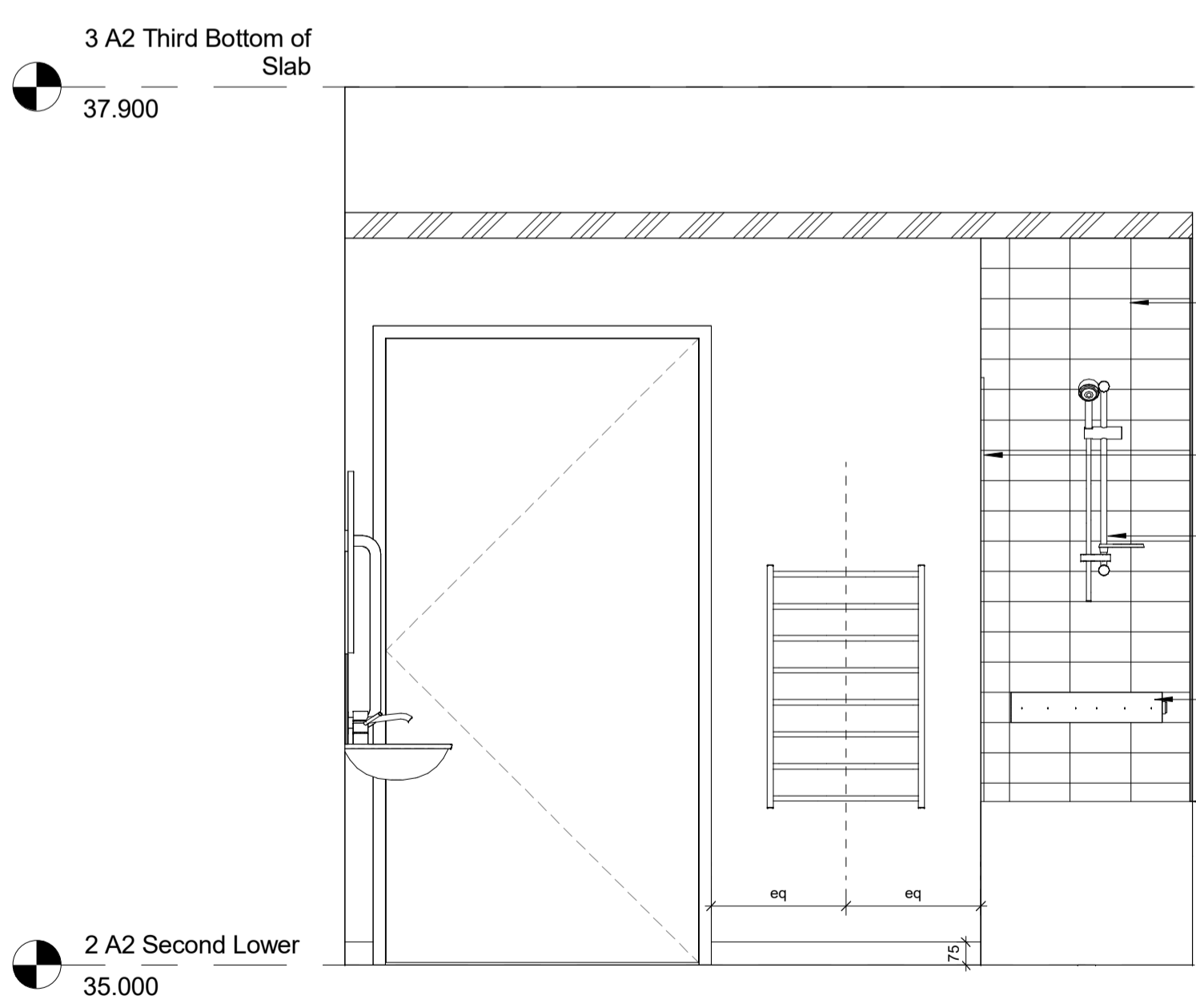
Bathroom R1 Sanitaryware Schedule		
Description	Comments	Manufacturer
Bath	All sanitary ware fixtures and fittings to be Code for Sustainable Homes Level 4 compliant	Twyford
1		
Wall mounted pull-out drying line	Line length to satisfy Code for Sustainable Homes requirements	Leifheit Telegant or similar
1		
Mirror	450x600mm with dome-head chrome fixings	
1		
Heated towel rail	Polished chrome towel rail. Bauhaus Design flat panel 500mm x 1430mm	Bauhaus
1		
Toilet Tissue Dispenser	Chrome toilet roll holder adjacent to WC	Bradley Corporation
1		
Doc M WC Pack	All sanitary ware fixtures and fittings to be Code for Sustainable Homes Level 4 compliant	Ideal Standard (UK) Ltd or equivalent
1		
6		



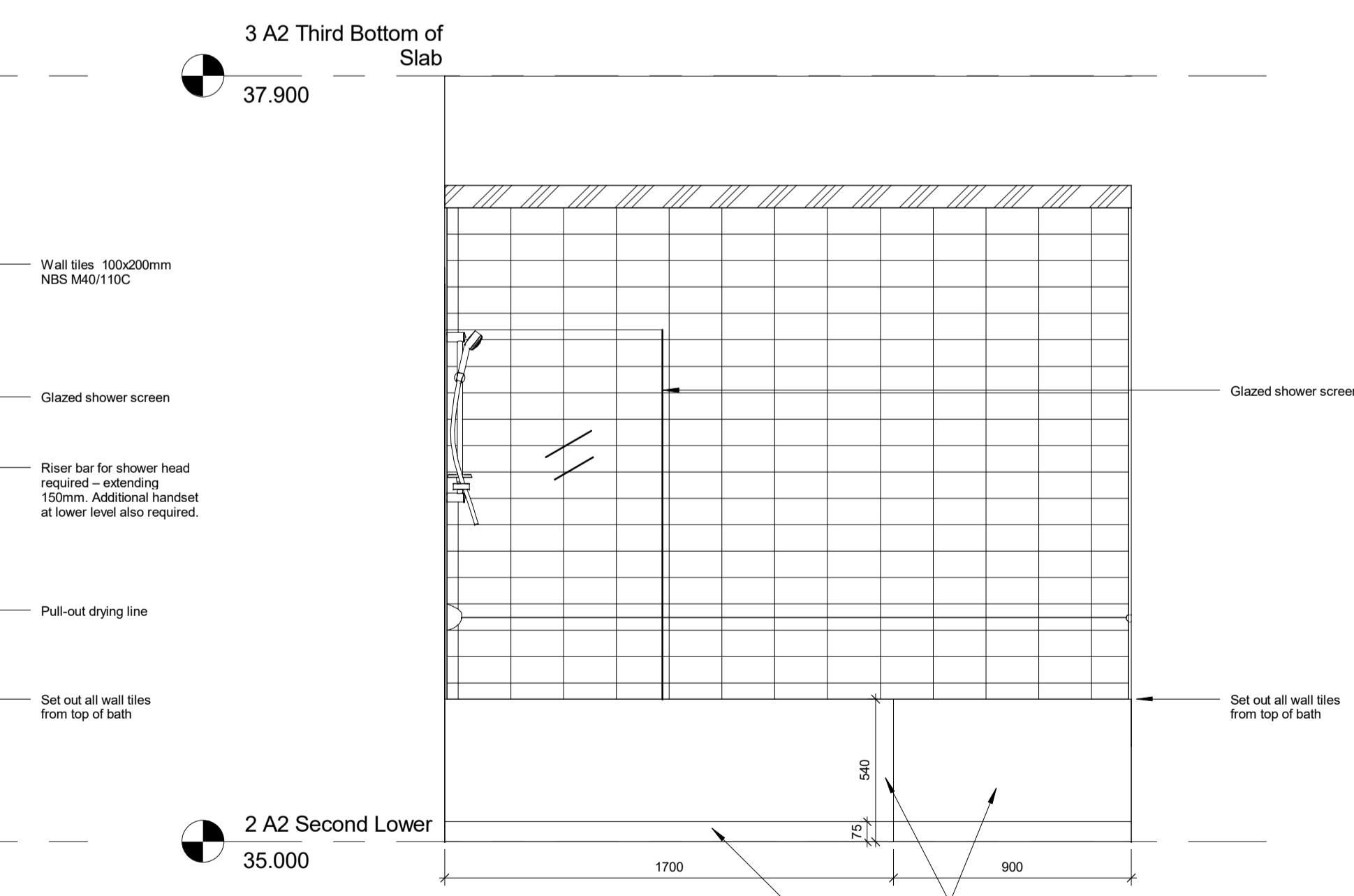
2 IE-ABR1-02  
 1 : 20



3 IE-ABR1-03  
 1 : 20

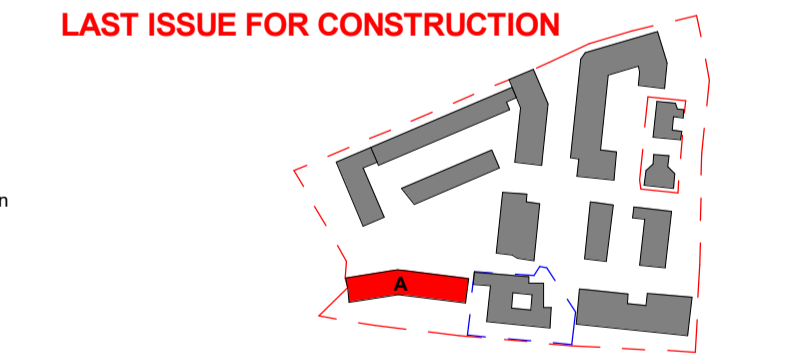


4 IE-ABR1-04  
 1 : 20



5 IE-ABR1-05  
 1 : 20

Rev	Date	Description	Drawn	Checked
4	28.02.18	Amendments for planning	CR	AMF
3	31.01.18	LAST ISSUE FOR CONSTRUCTION	IC	RW
2	10.10.17	Addition of Sanitaryware Schedule	IC	RW
1	06.12.16	Updates an response to Occupational Therapist comments	IC	RW



Client: Hill Partnership Ltd for Camden Council  
 Project: Agar Grove Block A  
 Drawing Title: Flat type R1 Bathroom  
 Project: T14011 - ART - DR - A - 1a A 00 - DD-605  
 Status: A Issued for Construction  
 Revision: Z4 Revision description as above  
 Scale: 1 : 20 @ A1 Date: 05 Dec 16  
 Drawn by: IC Checked by: RW  
 Internal Project Ref: 8090 Model Ref: AG-RAC2015-A-A