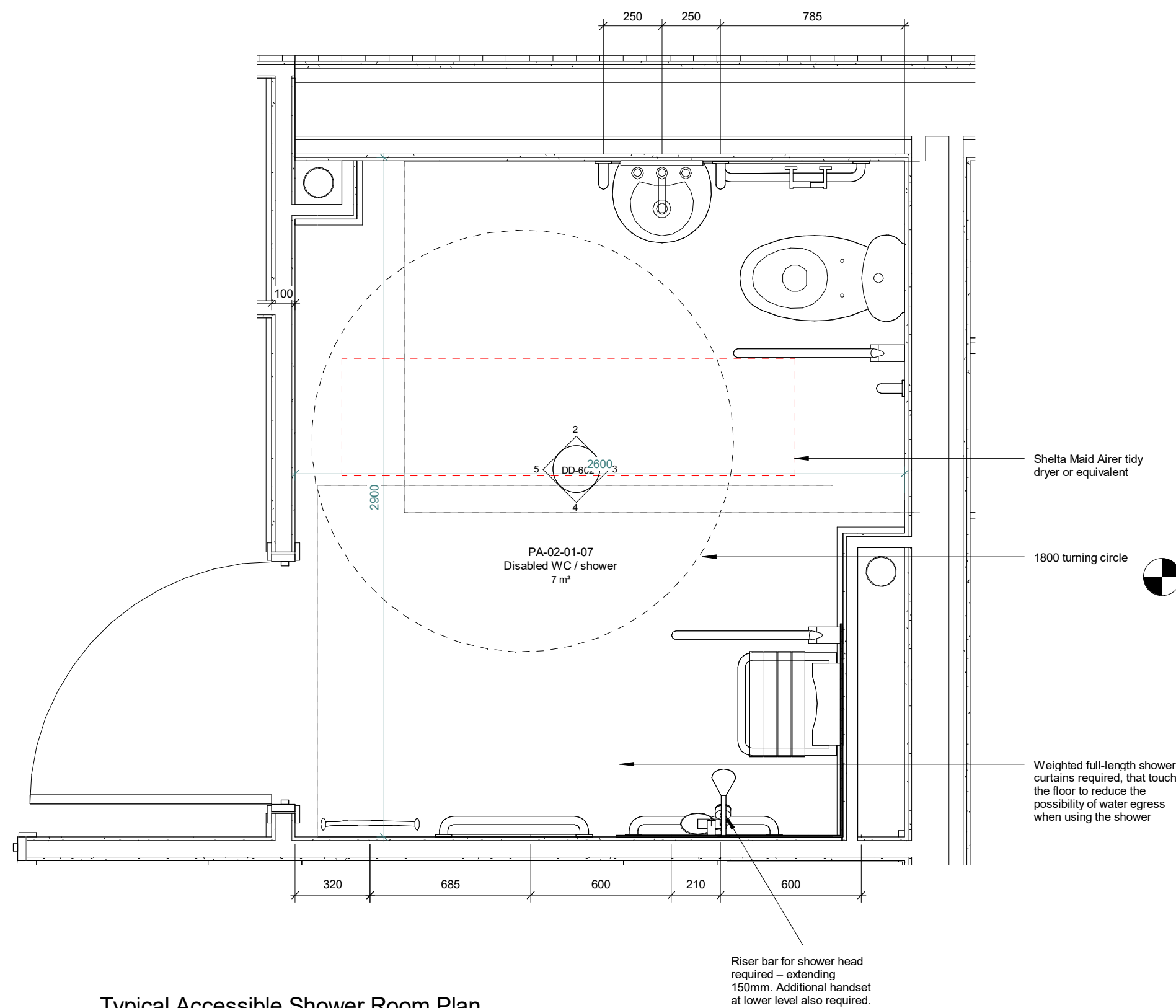


Notes

This drawing is © Archtype Ltd.
Check this drawing is the latest revision.
Do not scale from this drawing.
Do not use the information on this drawing without checking all dimensions on site.
Do not use any areas indicated for either valuation, purchase, sale or any other form of legally binding contract.
Do not reproduce any part of this drawing without prior written consent.
Report any discrepancies on this document to Archtype.
Read this drawing in conjunction with the associated models, specifications and related consultant's documents.
Equivalent products / materials may be Approved where the Employer's Requirements, Thermal Performance, Airtightness and any other specified performance requirements are met. Subject to Archtype "Acceptance".
All materials to be certified to comply with BS 14001 or BES6001 or be able to provide a Chain of Custody certificate in order to comply Code for Sustainable Homes. All timber species and sources used in this development are not to be listed on the CITES appendices for endangered or threatened species (appendix I, II or III).

NOTE:
Refer to M&E information for access panel locations and heights to maintain SVPs

NOTE:
Tile setting out as per typical tiling. Drawing only indicative of tile alignment, not setting out.

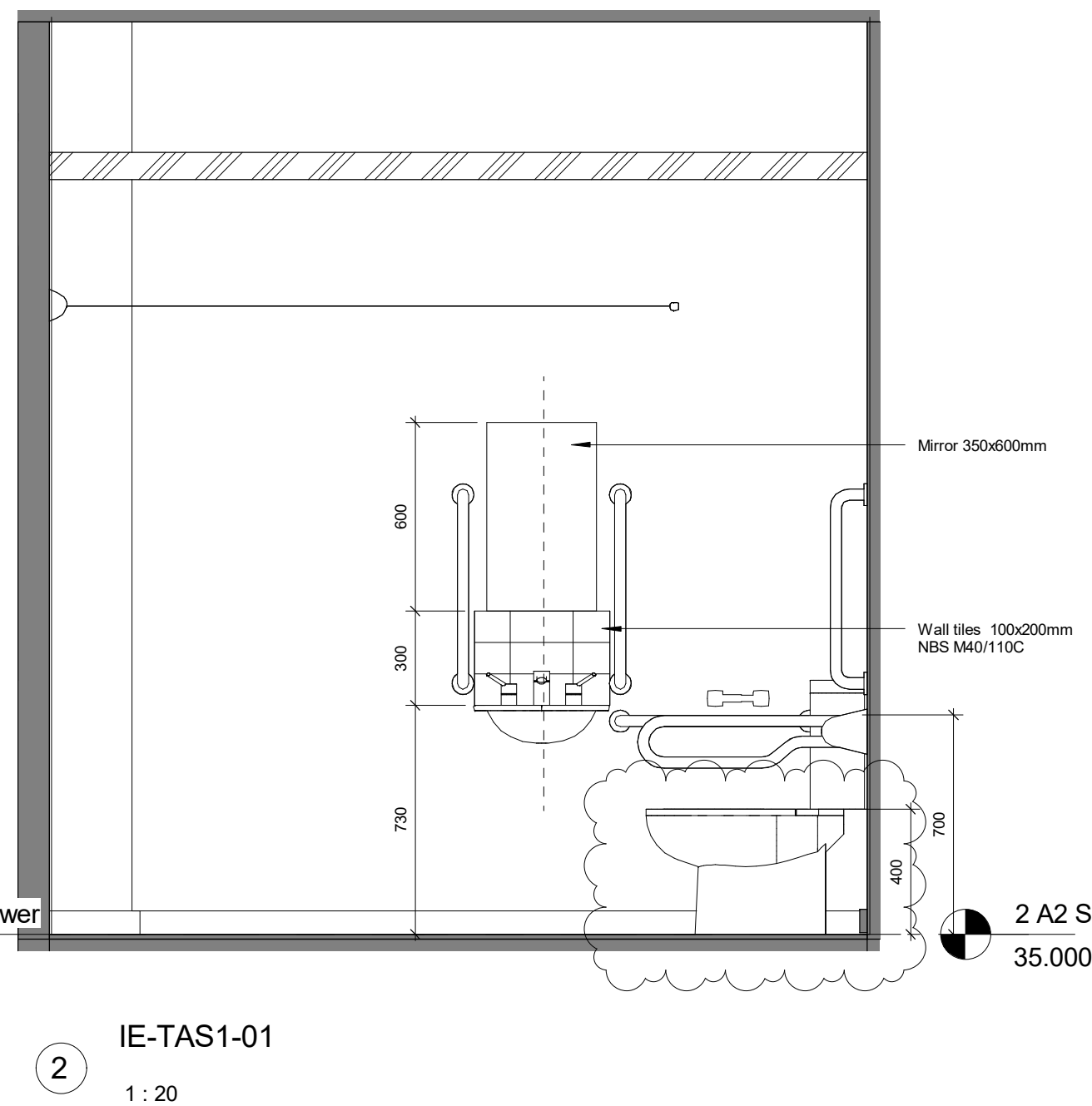


Typical Accessible Shower Room Plan

1 : 20

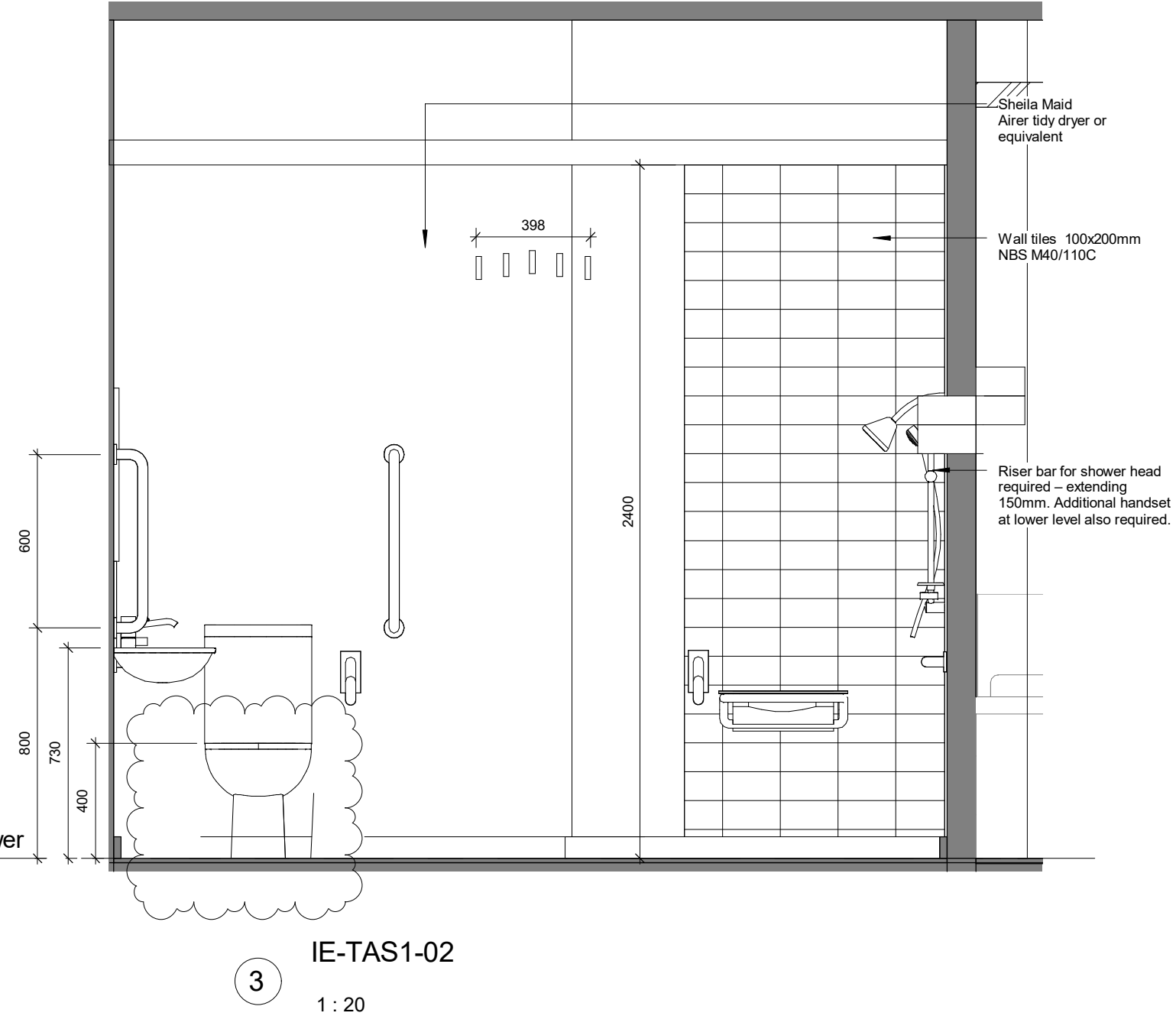
NOTE:
Shower room type present in flat type R1

Typical Accessible Shower Room Sanitaryware Schedule Copy 1		
Description	Comments	Manufacturer
Bathroom - towel rail	Polished chrome towel rail. Bauhaus Design flat panel 450mm x 1430mm	Bauhaus
1 Doc M Shower Pack	All sanitaryware fixtures and fittings to be Code for Sustainable Homes Level 4 compliant	Ideal Standard (UK) Ltd or equivalent
1 Doc M WC Pack	All sanitaryware fixtures and fittings to be Code for Sustainable Homes Level 4 compliant	Ideal Standard (UK) Ltd or equivalent
1 Mirror	450x600mm with dome-head chrome fixings	
1 Toilet Tissue Dispenser	Chrome toilet roll holder adjacent to WC	Bradley Corporation
1 Wall mounted pull-out drying line	Line length to satisfy Code for Sustainable Homes Level 4 requirements	Leifheit Telegant or similar
6		



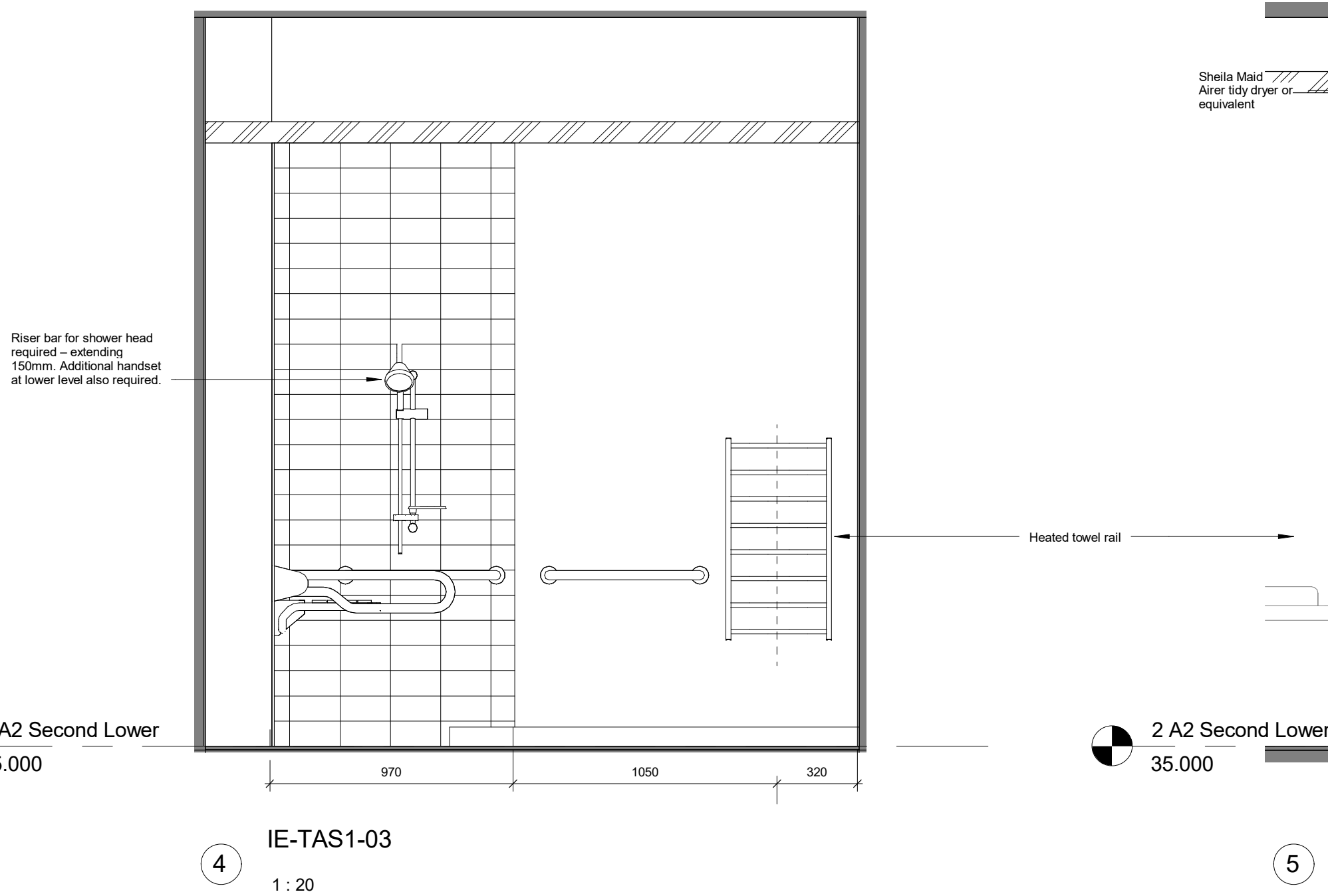
IE-TAS1-01

1 : 20



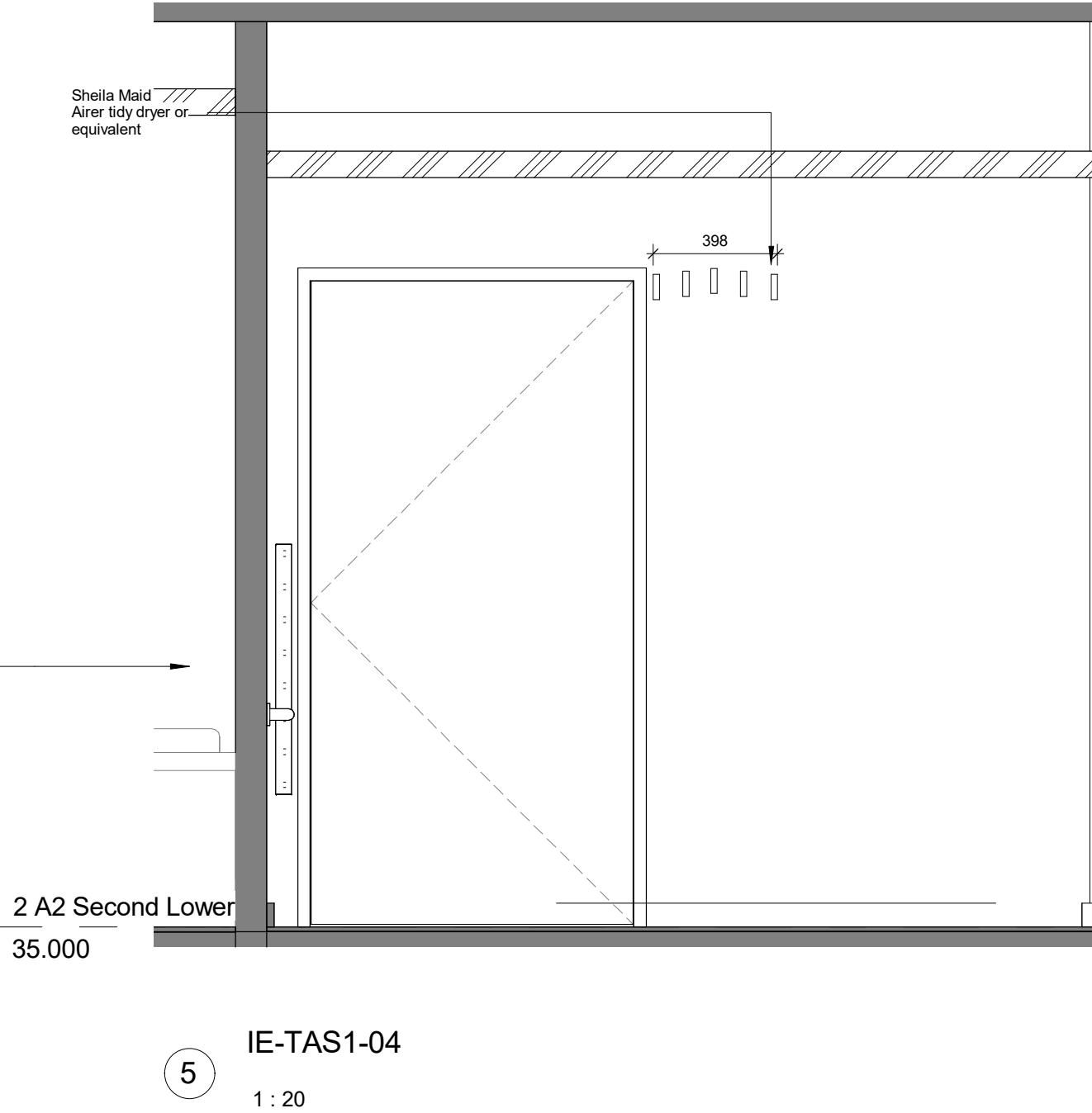
IE-TAS1-02

1 : 20



IE-TAS1-03

1 : 20

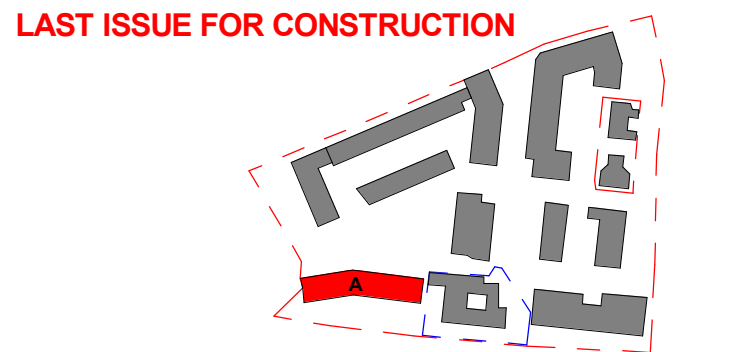


IE-TAS1-04

1 : 20

Rev	Date	Description	Drawn	Checked
10	28.02.18	Amendments for planning	CR	AMF
9	31.01.18	LAST ISSUE FOR CONSTRUCTION	IC	RW
8	10.10.17	Update to flat type references and Sanitaryware Schedule	IC	RW
7	08.12.16	Updates as response to Occupational Therapist comments	IC	RW
6	22.11.16	Addition of bathroom location information & adjustments to lower rail locations	IC	RW
5	22.11.16	Update to tiling, and add to disabled shower room boxing	IC	LF
4	19.08.16	Title specification alteration and general amendments	LM	IC
3	18.06.16	Issued for Construction	AP	IC
2	19.10.15	Issued for Building Control	CD	EB
1	03.09.15	Preliminary Issue	IC	CD

LAST ISSUE FOR CONSTRUCTION



LONDON: 020 7403 2888 WWW.ARCHTYPE.CO.UK HEREFORD: 01881 542 111

Client:	Hill Partnership Ltd for Camden Council						
Project:	Agar Grove Block A						
Drawing Title:	Typical Accessible Shower Room						
Project	Originator	Type	Role	Phase	Block	Unit	Unique ID
T14011	- ART	- DR	- A	- 1a	A 00	- DD-602	
Status:	Code	Suitability Description					
	A	Issued for Construction					
Revision:	Code	Revision Description					
	Z 10	Revision description as above					
Scale:	1 : 20 @ A1	Date:	03 Sep 15				
Drawn by:	IC	Checked by:	CD				
Internal Project Ref:	8090	Model Ref:	AG-RAC2015-A-A				