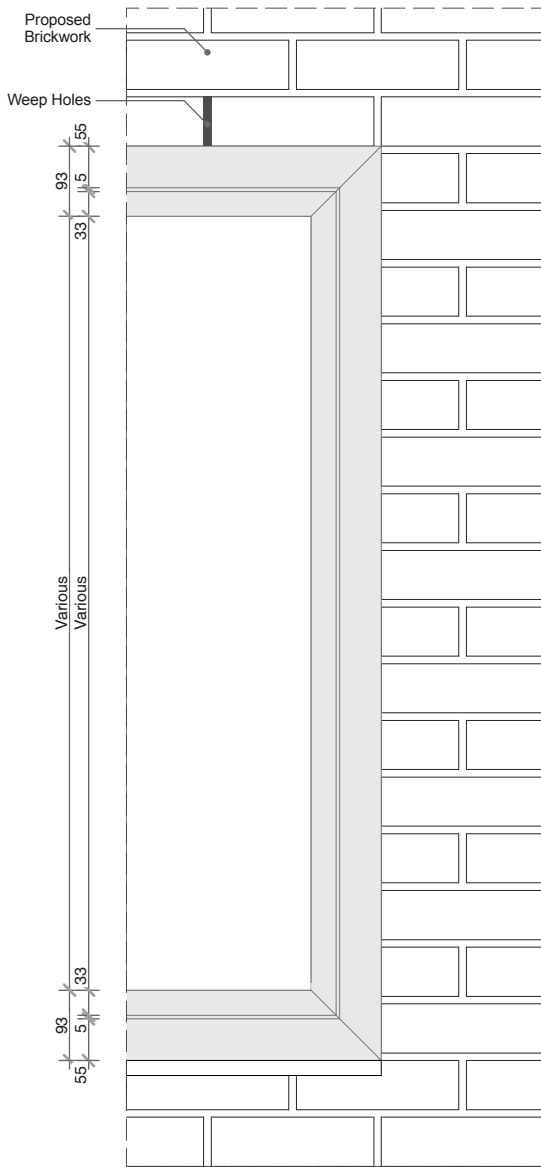
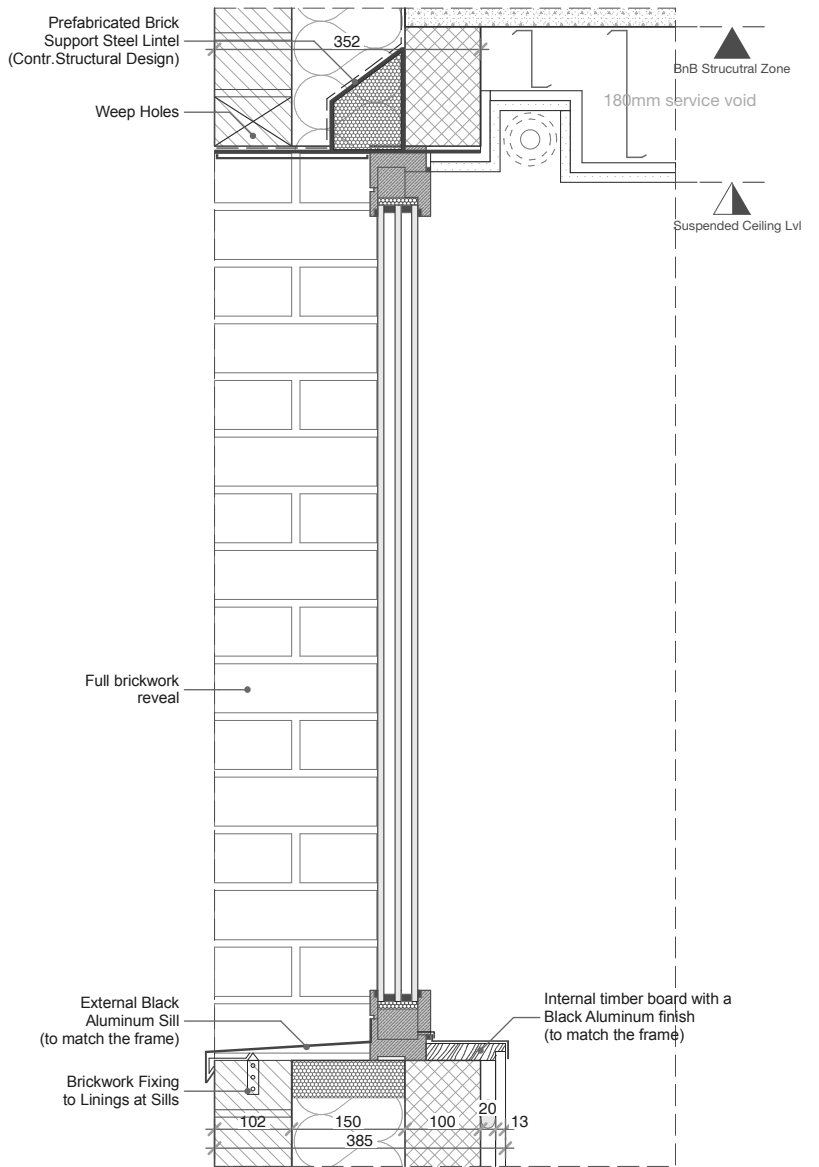


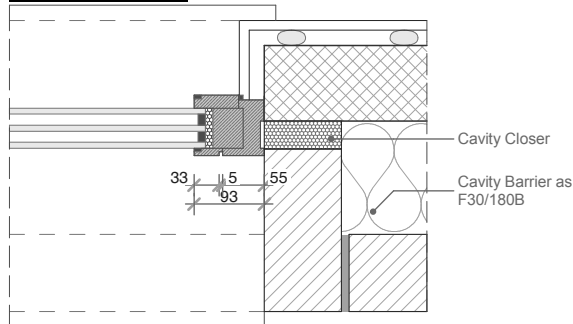
WINDOW DETAIL: ELEVATION



WINDOW DETAIL: SECTION



WINDOW DETAIL: PLAN



WINDOW DETAIL:

Triple glazed openable Window Detail (Tilt and Turn):

Frame model: Aluprof MB-70
 Frame colour: RAL 7016
 Sill type: Aluminum, powder coated



Notes

1. All dimensions to be checked on site.
2. All dimensions are to masonry unless otherwise stated (ie not plaster finishes)
3. All information is to be checked and verified by the contractors and sub-contractors for accuracy and fit.
4. Discrepancies or omissions to be brought to the attention of Douglas & King prior to construction.
5. Do not scale from this drawing.



revision	date	notes	project:	drawing title:
A	28.02.2018	Planning Issue	White Lodge 252 Finchley Road NW3 7AA	Planning Discharge (Condition2): Proposed Window Frame Detail (1)
			client: Finchley Road Developments LTD	

Douglas and King Architects

148-150 Curtain Road London EC2A 3AR
 t + 44 (020) 7613 1395
 info@douglasandking.com
 www.douglasandking.com

scale:	date:	PLANNING DISCHARGE
1:10 @ A4	January 2018	
drawing no:		
FINc252_PL_DR_046_A		