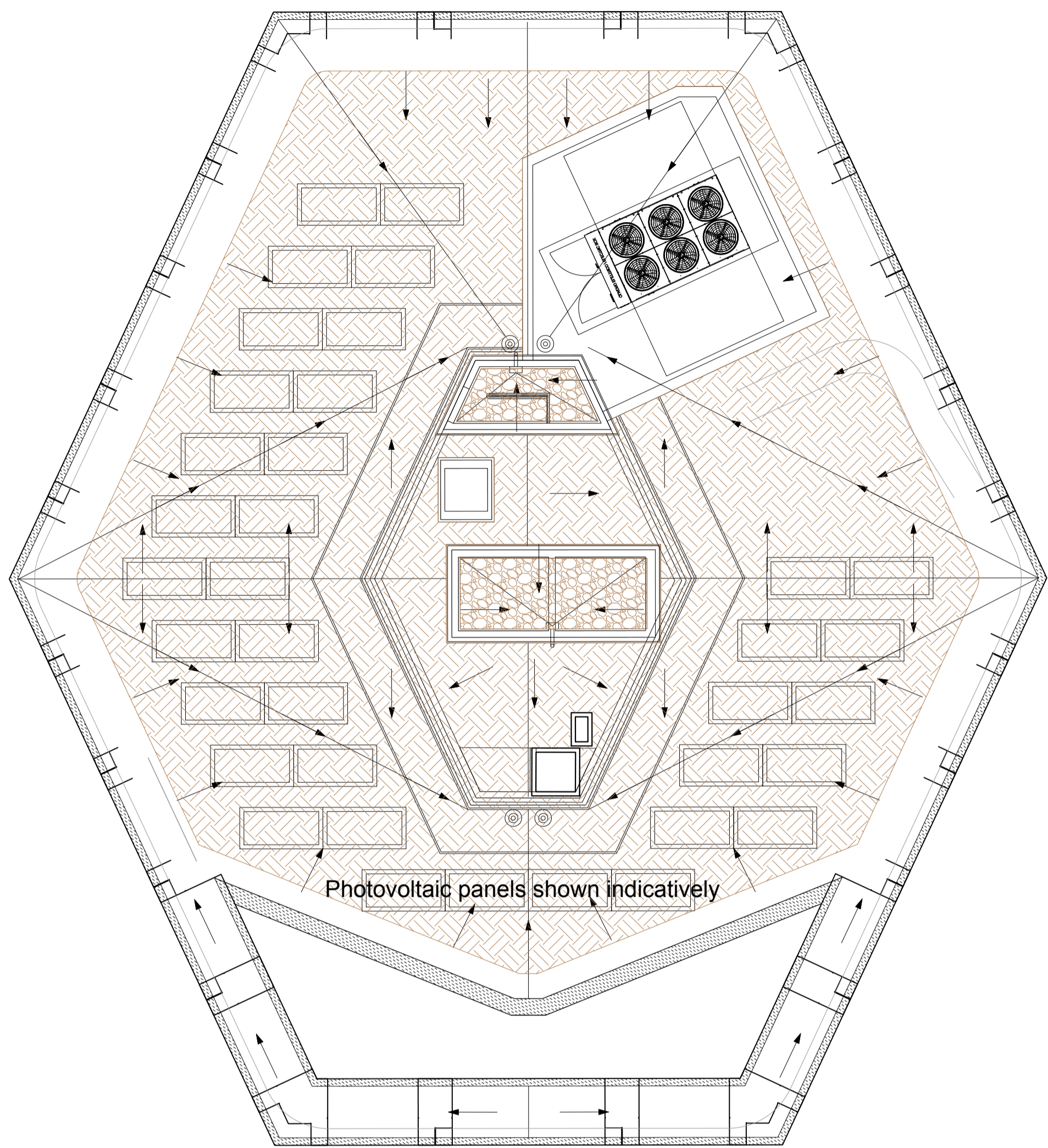


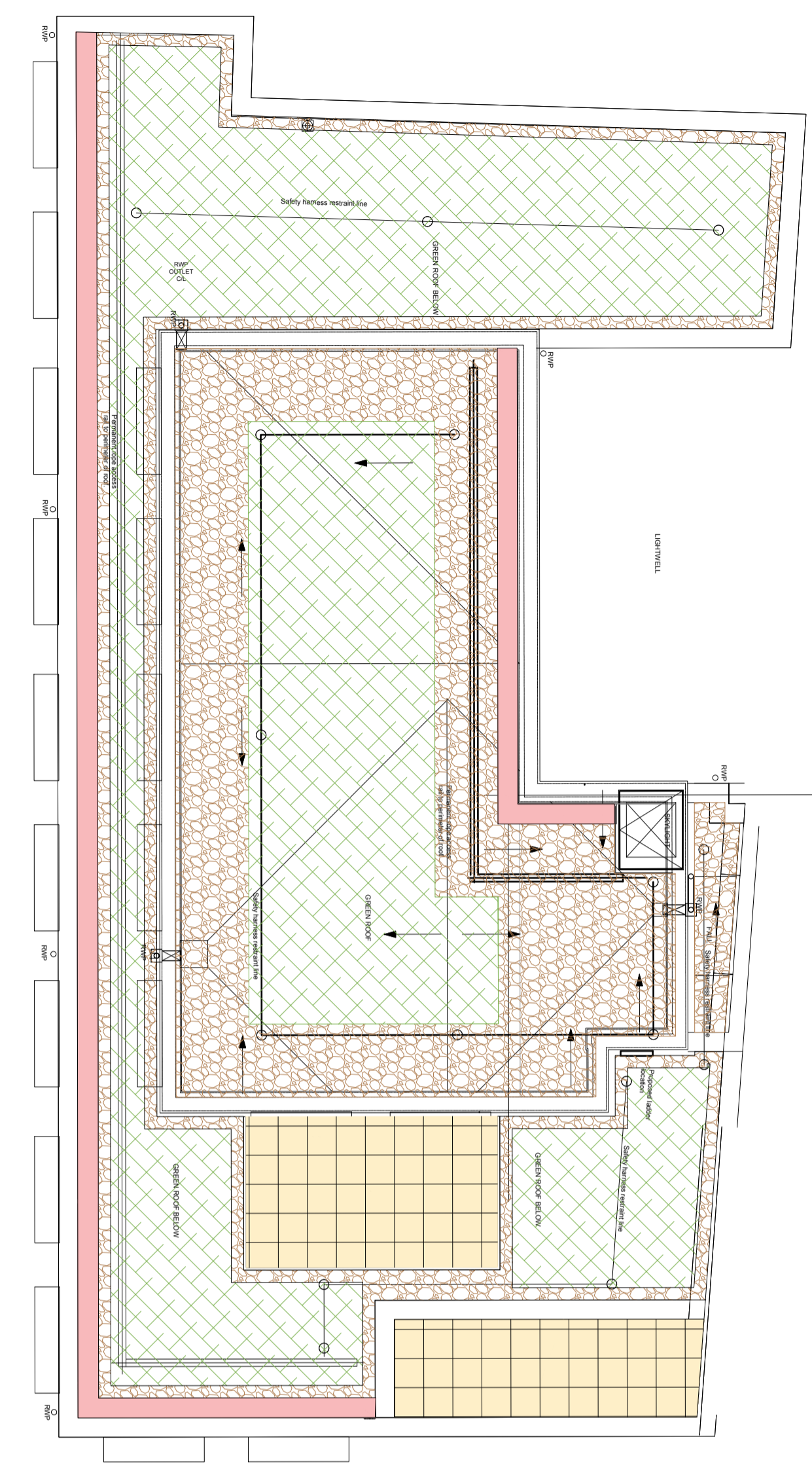
DO NOT SCALE OFF THIS DRAWING  
REPORT ANY ERRORS OR  
DISCREPANCIES TO THE  
ARCHITECT PROMPTLY

**LANDSCAPE KEY:**

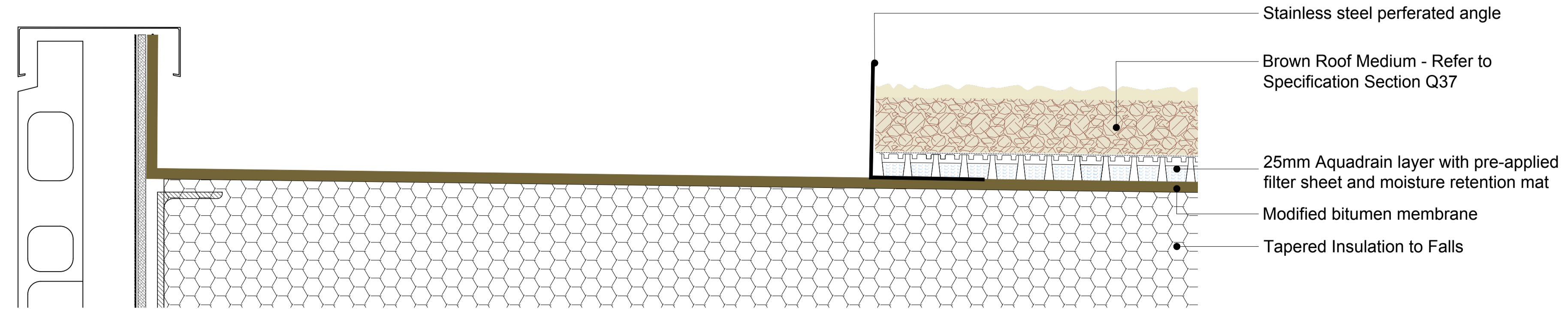
	600x300mm Concrete 'La Linia' Block Paving. Specification Ref. Q25 315A
	Sedum Green Roof. Specification Ref. Q37/ 440A
	Washed Rounded Pebble Maintenance Margin. Specification Ref. Q37/ 440
	Brown Roof Material. Specification Ref. Q37/ 395
	Maintenance Walkway. Detail to be confirmed



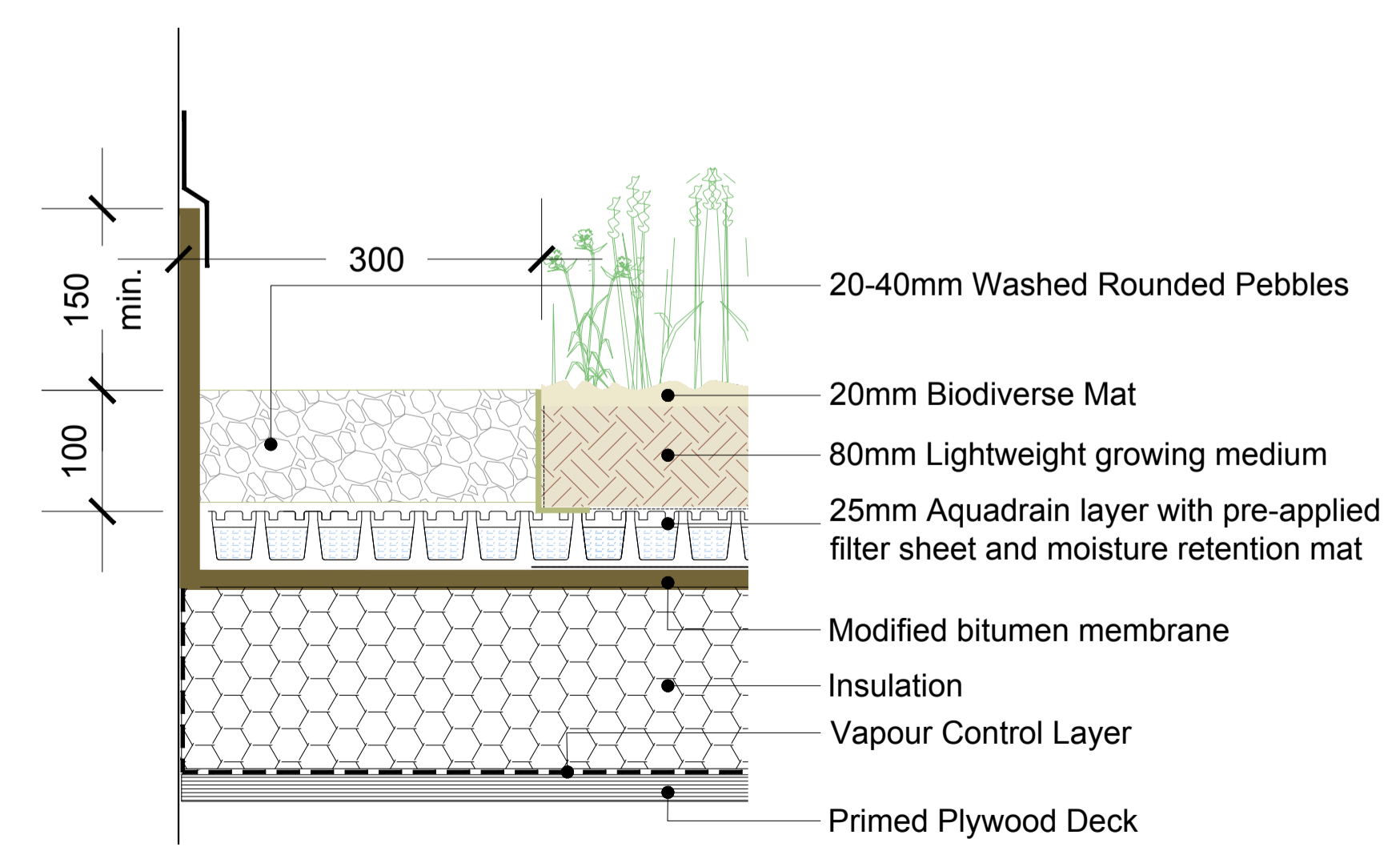
**01** PROPOSED PARKER TOWER ROOF PLAN  
5306 1:100 @ A1



**02** PROPOSED BLOCK A ROOF PLAN  
5306 1:100 @ A1



**03** BROWN ROOF BUILD UP INCLUDING MARGIN DETAIL - MAIN TOWER  
5306 1:5 @ A1



**04** GREEN ROOF BUILD UP INCLUDING BALLAST MARGIN DETAIL - BLOCK A  
5306 1:5 @ A1

P2	08.12.17	DF	Tower roof plans and details revised
P1	20.11.17	PG	PRELIMINARY ISSUE
No	Date	By	Comments

Revision Notes  
Status:

**PRELIMINARY**

**MOXLEY ARCHITECTS**

47 Clapham High St London SW4 7TL  
T +44 (0) 7720 8968 F +44 (0) 7627 2533  
www.moxley.co.uk E info@moxley.co.uk

Client:  
GROUPE LEGENDRE UK

Project:  
PARKER TOWER  
43-49 PARKER STREET  
LONDON  
WC2B 5PS

Drawing Title:  
LANDSCAPE ROOF DETAILS  
TOWER ROOF & BLOCK A

Scale: 1:100 / 1:5 at A1

Date: Oct 2017	Drawn:	Chkd:
Project:	Issuer:	Number:
		Rev:

**PARMOX 5306 P2**

MAL project file: 768 - Parker Tower