

Material Details

Projecting Window Cuffs



Proposed Side Elevation



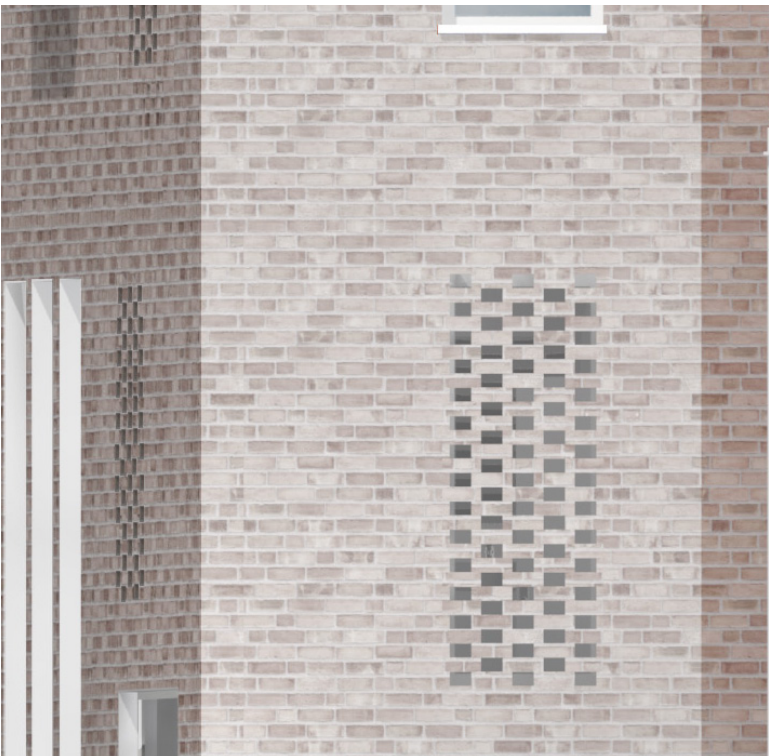
The projecting window cuffs at first and second floor level add depth to the proposed side elevation and help to ‘frame’ the feature windows. The cuffs will match the proposed window frame material and colour.

Material Details

Perforated Brick Pattern



Proposed Front Elevation



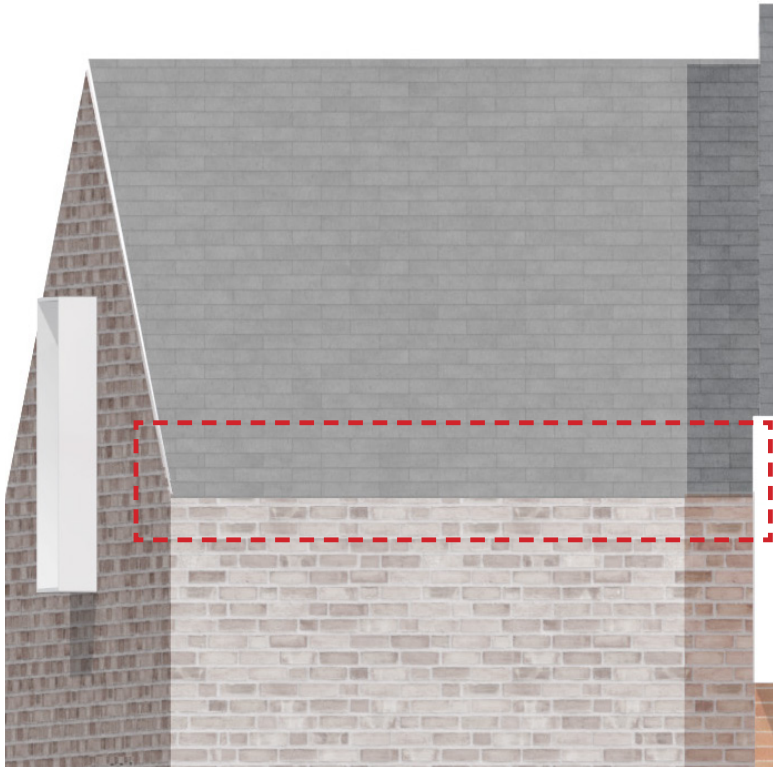
Carmody Groark - Highgate House - London N6

As discussed in the pre-application meeting, we have proposed a perforated brick detail to help obscure views into the bathroom windows at ground and first floors. The level of obscurity is controlled through the pattern of the perforation which follows the pattern of the ‘flemish’ brick bond. The proposed detail will be consistent across front and side elevations and will help tie both elevations together.

Material Details
Concealed Roof Gutters



Proposed Front Elevation



We are proposing a concealed gutter detail for both front and rear roof pitches of the side extension. As discussed in the pre-applicaition meeting, Alma-nac have successfully implemented this detail on a number of previous projects in an effort to neaten up and conceal the proposed drainage system

Sketch 01

Internal View

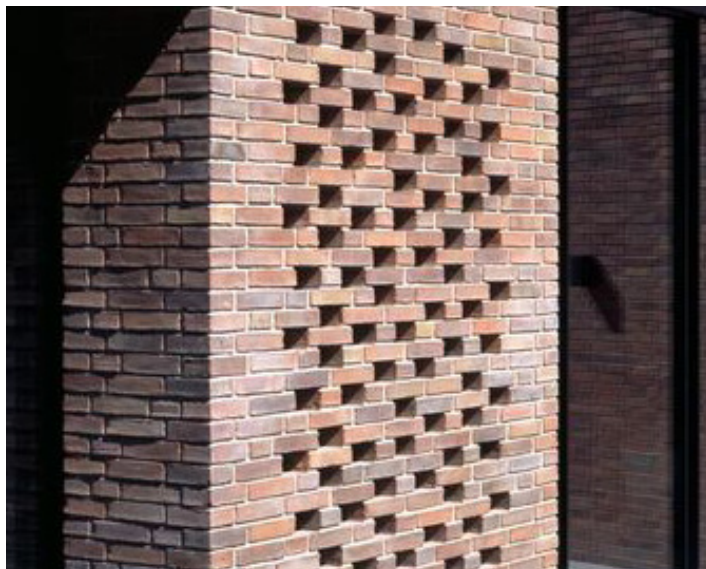


Sketch 02
Internal View



General Precedents

Brick Colour & Texture



alma-nac

Profile

Alma-nac is a London-based studio that emerged in 2010 out of a desire to focus on construction rather than paper architecture. There was a yearning to ask open questions and to go back to first principles. The founding partners – Chris Bryant, Caspar Rodgers and Tristan Wigfall – are also keen on design as having a role in making something worthwhile out of perhaps an unlikely starting point like a difficult site or unusually small space.

This investigative attitude goes hand in hand with Alma-nac's interest in research-based architecture and in using temporary structures and installations as way to explore our environment. Arup invited Alma-nac to do just this as part of the BEL Installation for their headquarters in London. The result was a fresh look at this major engineering firm's own office both from a social as well as an environmental perspective.

Alma-nac's built work includes commissions for creative and forward-thinking individuals from the music industry, publishing and politics. On each project, the architects touch on themes that have a real resonance in the profession and our experience of

places. Slim House in Clapham, London is an example of this type of innovative use of a pocket-of-space that only became valuable through insightful design. The project led onto fresh thinking about micro-living and the practice is currently working on two multi-unit housing projects that further explore the notion of compact homes.

A distinctive aspect of the working methods at Alma-nac is the use of wit together with direct engagement with the public and the design community as a sounding board for their work. To this end, the studio has been actively involved in setting up groups and events such as BOW DIY, Free Architecture and Guerilla Tactics.

In July 2015 Alma-nac was named as one of the 'emerging architectural talents' of the world by Wallpaper magazine as part of their Architects Directory. More recently Alma-nac won named as a finalist in the Royal Accademy's 'Urban Jigsaw' ideas competition looking at new and innovative ideas of how to address brownfield sites in the capital.





Light weight interventions and structural glass floors ensure the two windowless floors to be entirely naturally lit.



alma-nac
Bell House, Hampstead

An open, spacious dwelling arranged to shield
itself from the busy city surround

