


**NOTE**

THIS DRAWING IS TO BE READ IN CONJUNCTION WITH ALL OTHER RELEVANT DRAWINGS AND SPECIFICATIONS  
 THIS DRAWING HAS BEEN PREPARED FOR IDENTIFICATION PURPOSES ONLY. VERIFICATION OF DRAWN INFORMATION TO BE CARRIED OUT BY CONTRACTOR PRIOR TO OTHER USE.

The window survey was an external inspection only - some assumptions regarding openings and window replacements have been made

Some windows are fitted with internal security bars

 Original windows replaced - generally in upvc

The window supplier must check all windows and opening arrangements



**Front elevation - 1**



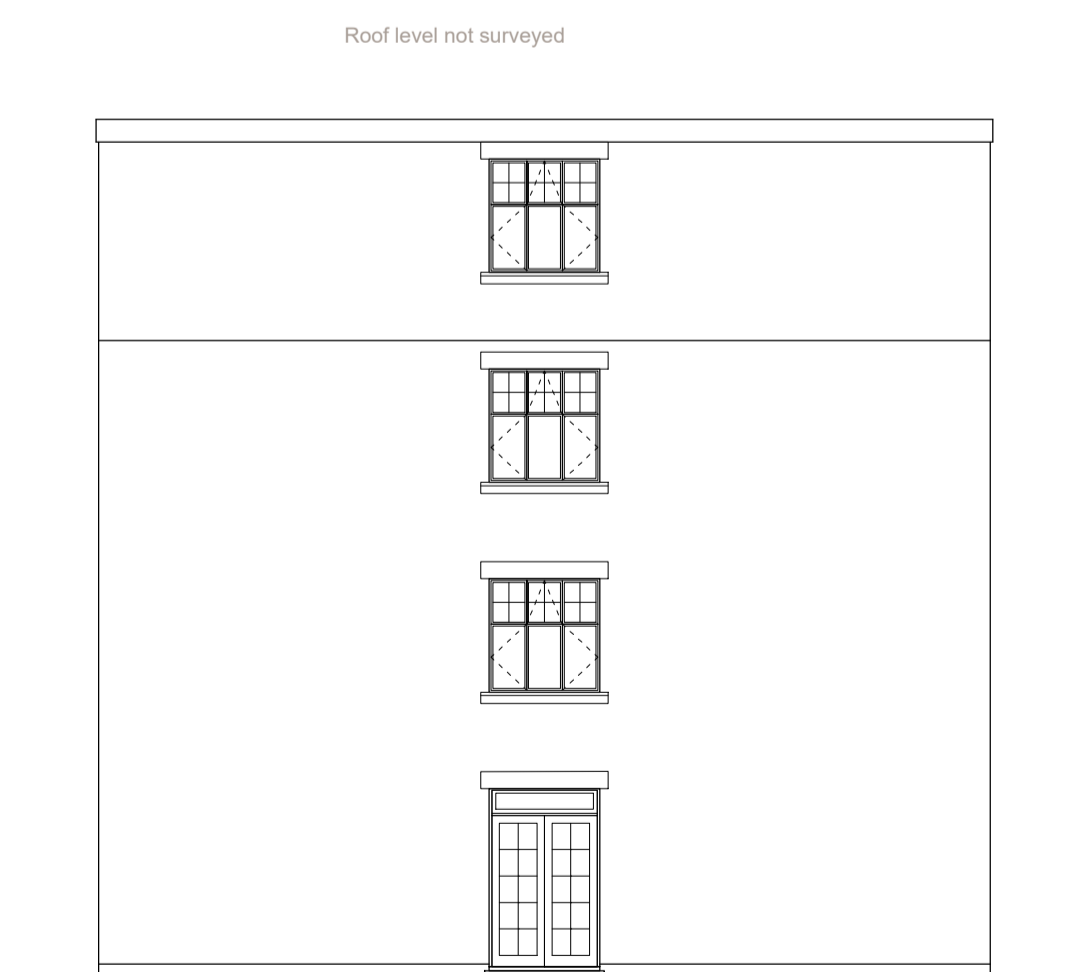
**Elevation - 4**



**Elevation - 3**



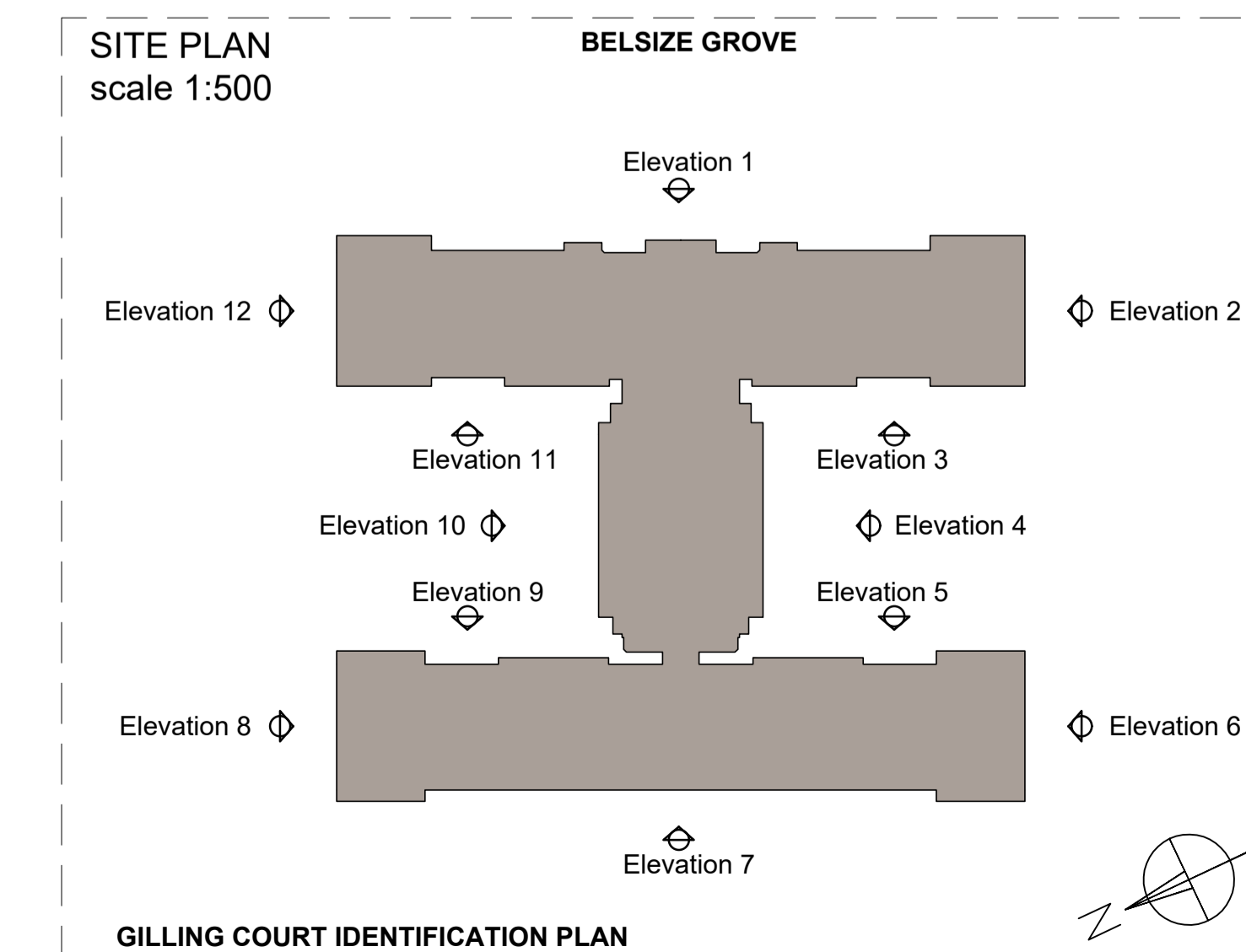
**Elevation - 2**



**Elevation - 6**



**Elevation - 5**



rev	description



- Milton House, 1 Milton Road, Peterborough PE2 8DZ Tel: 01733 344695
- 619 Holloway Road, London N19 5SS Tel: 020 7561 0189

project no  
 Gilling Court, Belsize Grove 1735

drawing no  
 WINDOW REPLACEMENTS - SV 01  
 EXISTING ELEVATIONS

scale date drawn checked  
 1:100@A1 28.11.17 RE




**NOTE**

THIS DRAWING IS TO BE READ IN CONJUNCTION WITH ALL OTHER RELEVANT DRAWINGS AND SPECIFICATIONS  
 THIS DRAWING HAS BEEN PREPARED FOR IDENTIFICATION PURPOSES ONLY. VERIFICATION OF DRAWN INFORMATION TO BE CARRIED OUT BY CONTRACTOR PRIOR TO OTHER USE.

The window survey was an external inspection only - some assumptions regarding openings and window replacements have been made

Some windows are fitted with internal security bars

 Original windows replaced - generally in upvc

The window supplier must check all windows and opening arrangements

Roof level not surveyed



**Elevation - 7**

Roof level not surveyed



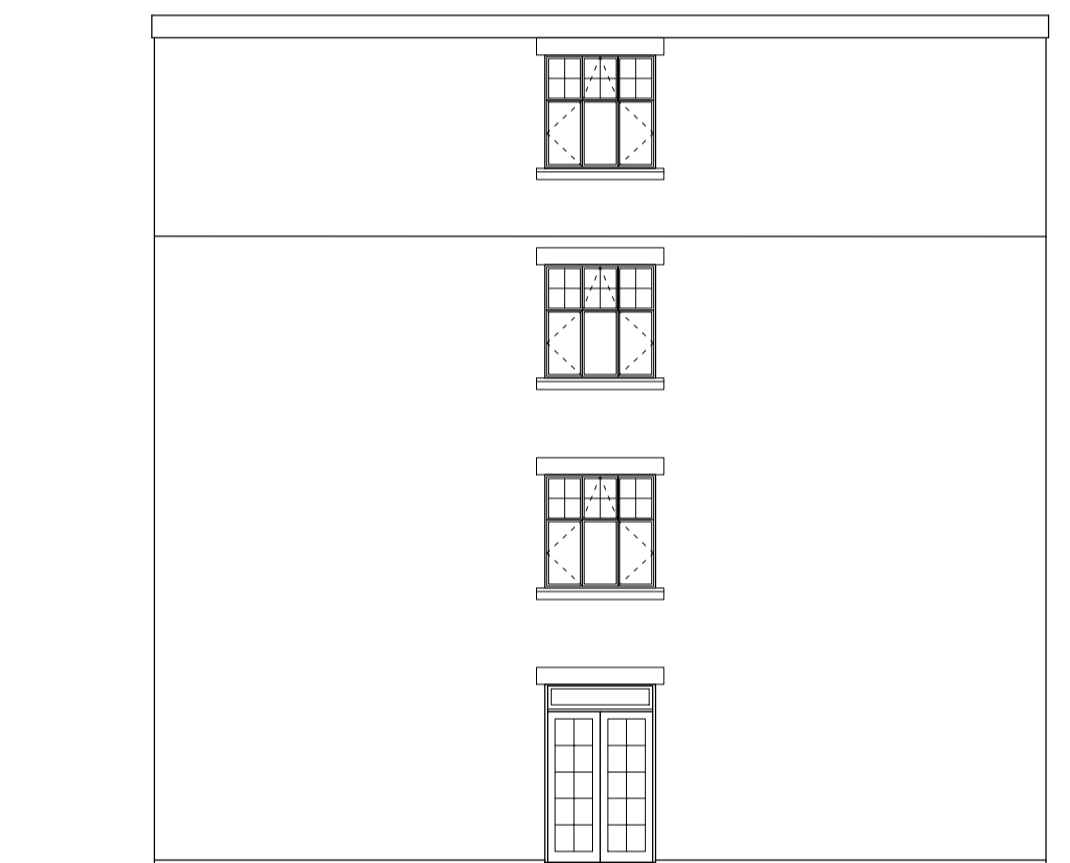
**Elevation - 10**

Roof level not surveyed



**Elevation - 9**

Roof level not surveyed



**Elevation - 8**

Roof level not surveyed



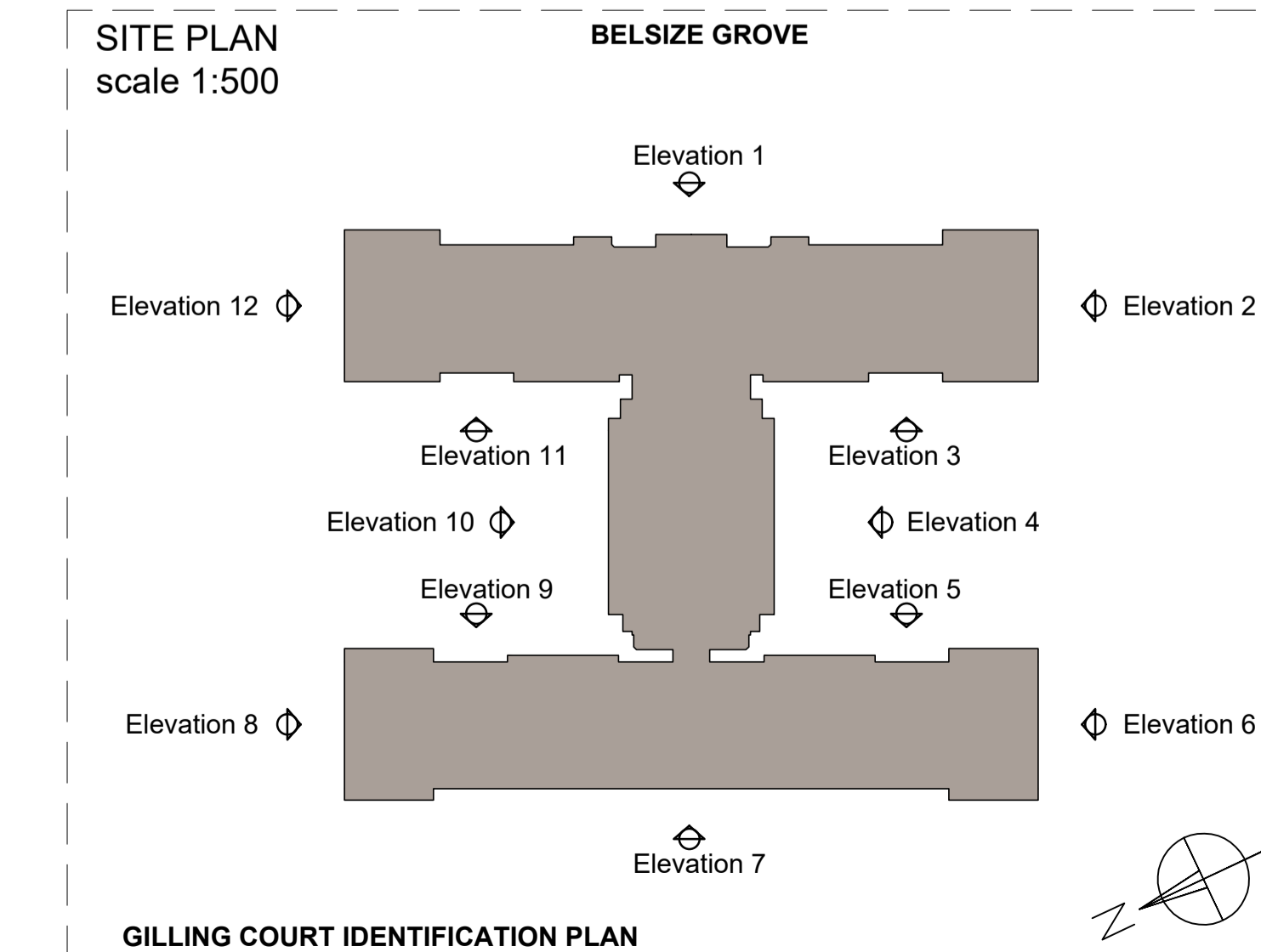
**Elevation - 12**

Roof level not surveyed



**Elevation - 11**

**SITE PLAN**  
scale 1:500



**GILLING COURT IDENTIFICATION PLAN**

rev



- Milton House, 1 Milton Road, Peterborough PE2 8DZ Tel: 01733 344695
- 619 Holloway Road, London N19 5SS Tel: 020 7561 0189

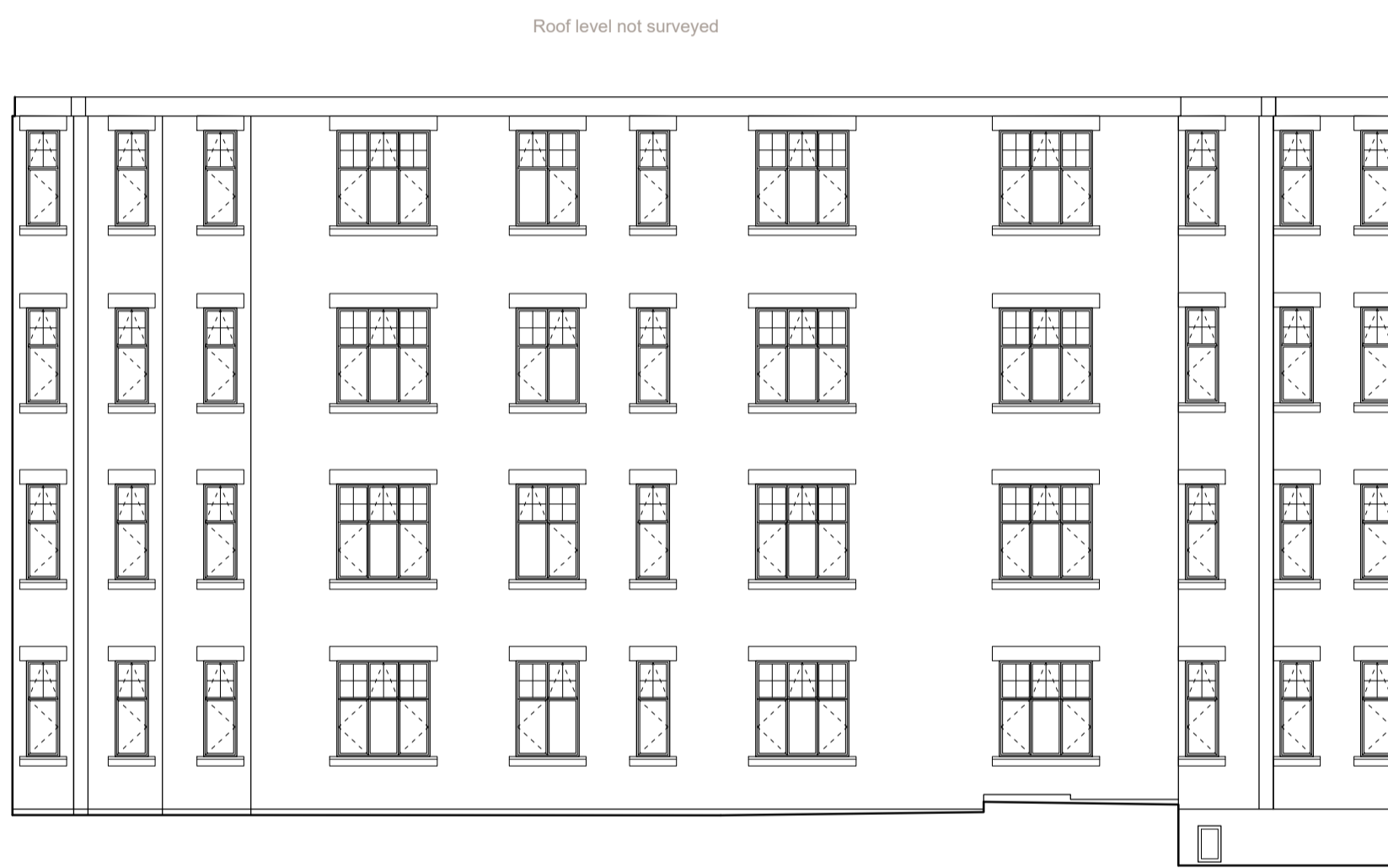
project no  
Gilling Court, Belsize Grove 1735

drawing no  
WINDOW REPLACEMENTS - SV 02  
EXISTING ELEVATIONS

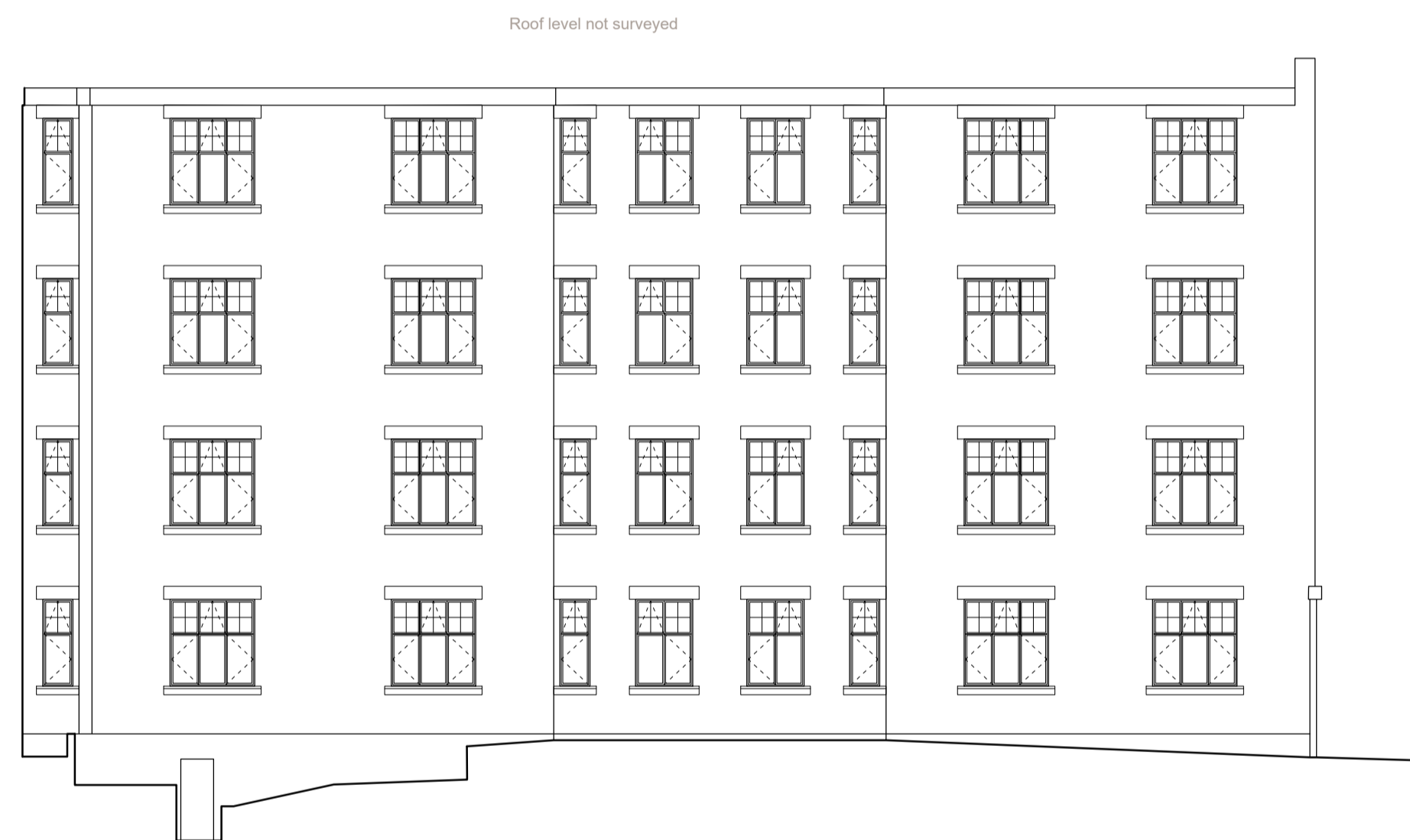
scale date drawn checked  
1:100@A1 28.11.17 RE



**Front elevation - 1**



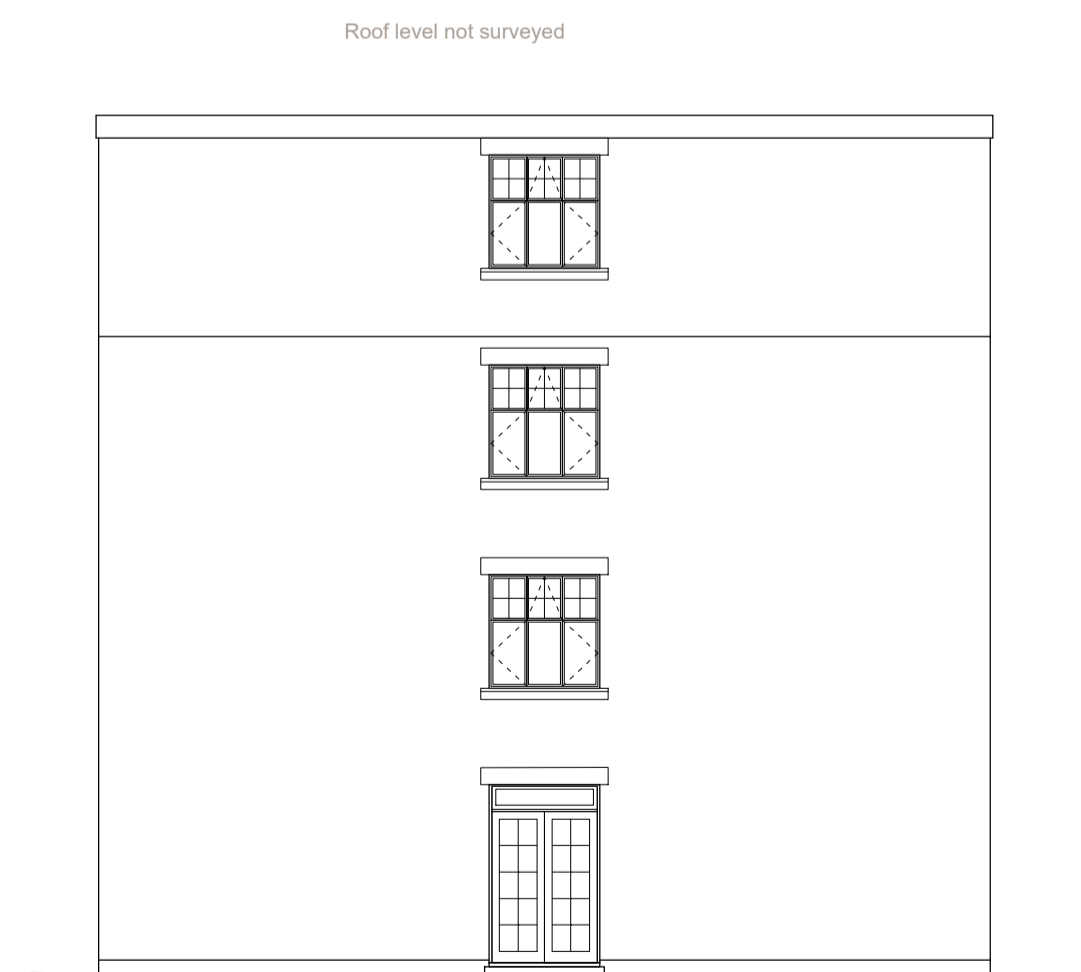
**Elevation - 4**



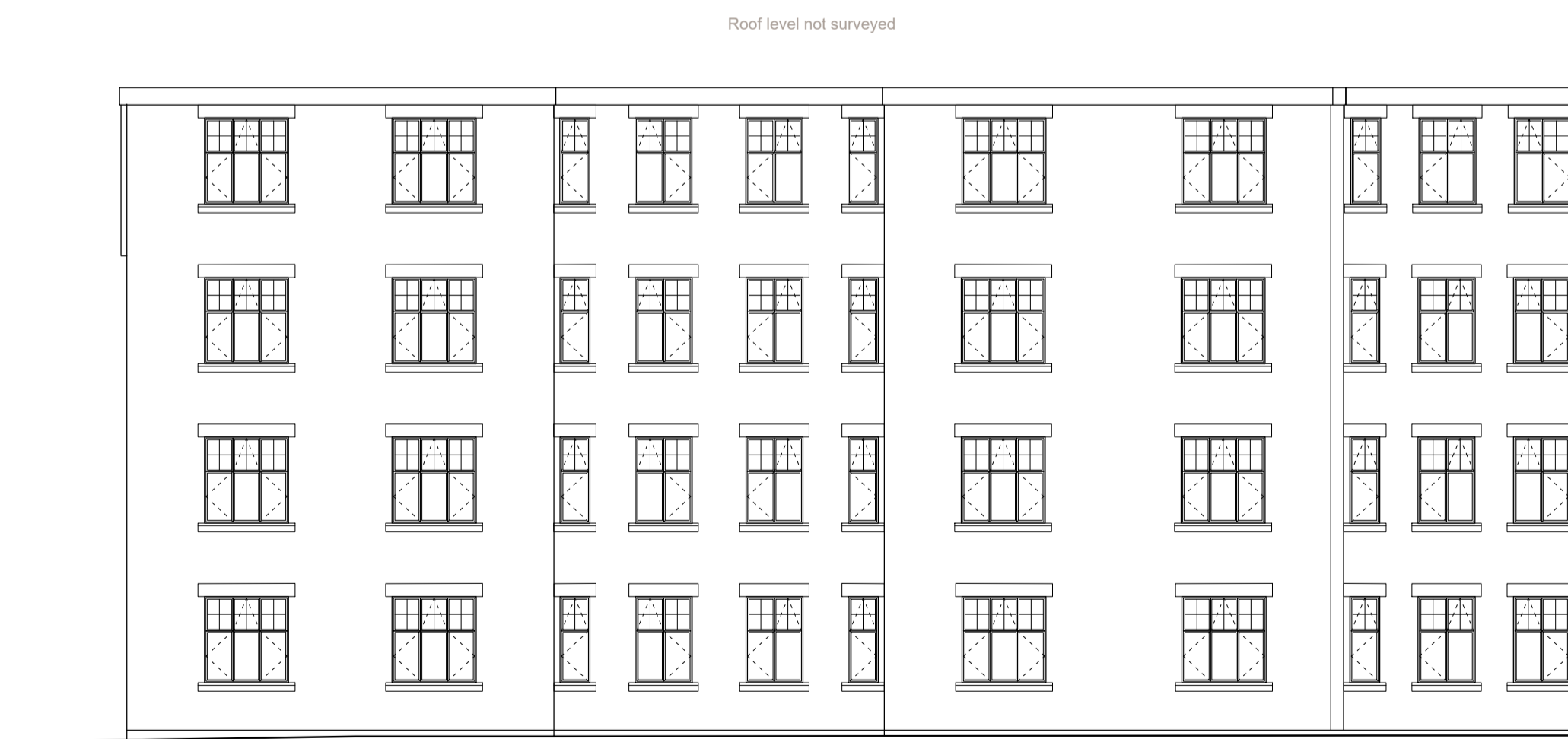
**Elevation - 3**



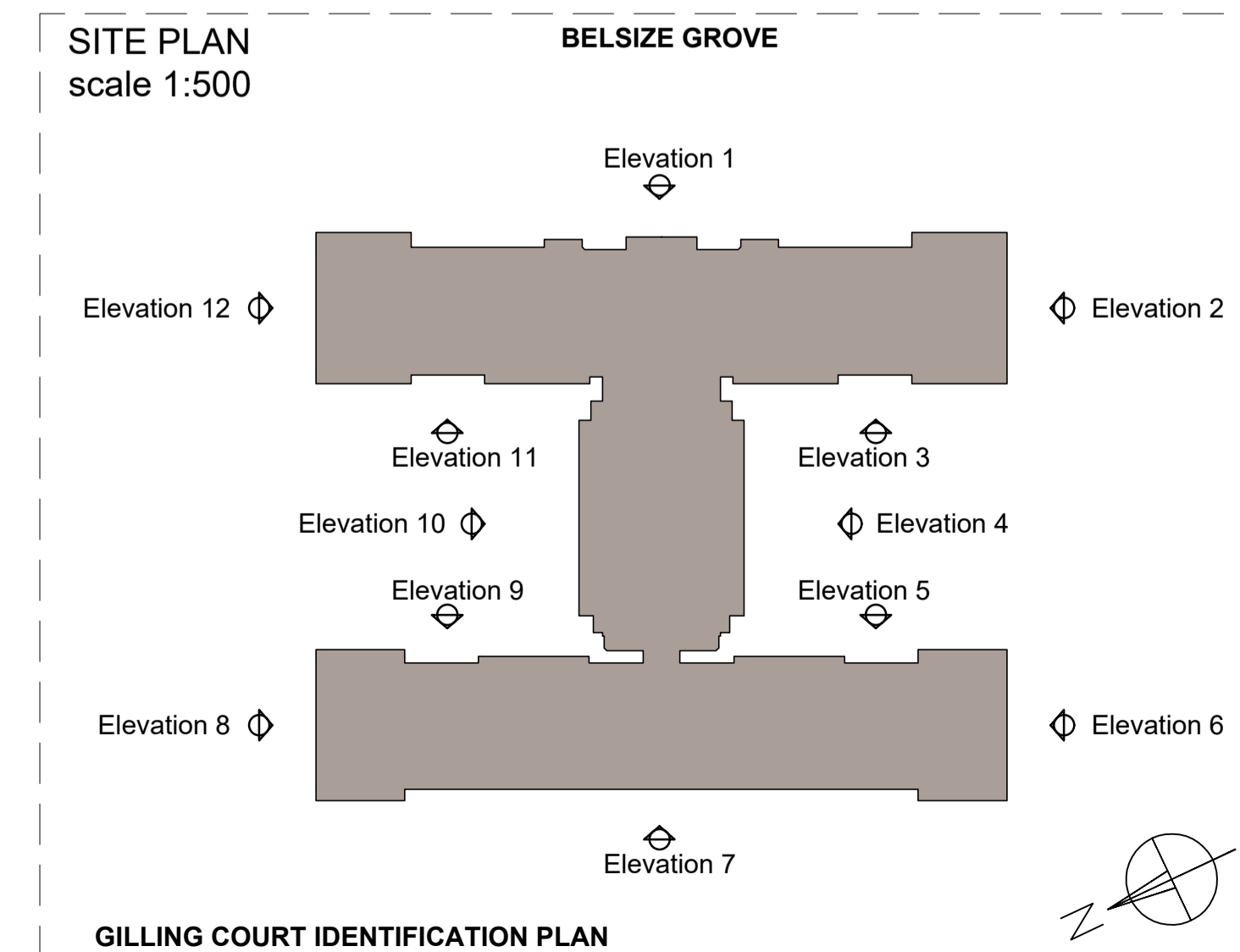
**Elevation - 2**



**Elevation - 6**



**Elevation - 5**



**NOTE**

THIS DRAWING IS TO BE READ IN CONJUNCTION WITH ALL OTHER RELEVANT DRAWINGS AND SPECIFICATIONS

THIS DRAWING HAS BEEN PREPARED FOR IDENTIFICATION PURPOSES ONLY. VERIFICATION OF DRAWN INFORMATION TO BE CARRIED OUT BY CONTRACTOR PRIOR TO OTHER USE.

The window survey was an external inspection only - some assumptions regarding openings and window replacements have been made

Some windows are fitted with internal security bars

All windows to be replaced with the Alitherm Heritage aluminium system and are to closely match the original window design.

The window supplier must check all windows and opening arrangements

**Alitherm Heritage Windows**

The replacement windows are to be Alitherm Heritage design with fixed light and open-out windows, internally and externally beaded.

All opening vents are hung on concealed stainless steel variable angle friction stays and fitted with cockspur/espagnolette locking mechanisms.

Internal beads and gaskets will accommodate 24, 28, 32 & 36mm units.

Thermal breaks are formed with polyamide strips PA 6.6 25 reinforced with glass fibre, fitted between aluminium extrusions. All profiles are extruded from aluminium alloy 6060/6063 T5/T6 and comply with the recommendations of BS EN 12020-2; 2001/BS 755-9: 2001.

Profiles are to be Electrostatic powder coat finished in white

**Manufacturer:**

Smart Systems Ltd. Arnolds Way, Yatton, North Somerset BS49 4QN.

Tel: 01934 876100. Fax: 01934 835169.

Email: [sales@smartsystems.co.uk](mailto:sales@smartsystems.co.uk)

Web: [www.smartsystems.co.uk](http://www.smartsystems.co.uk)

**Thermal:** All windows, in conjunction with a suitable glazing specification, to achieve an average project U-value to meet the current requirements of the approved Building Regulation Document L1/L2 for England and Wales.

rev



- Milton House, 1 Milton Road, Peterborough PE2 8DZ Tel: 01733 344695
- 619 Holloway Road, London N19 5SS Tel: 020 7561 0189

project no  
Gilling Court, Belsize Grove 1735

drawing no  
WINDOW REPLACEMENTS - GA 01  
PROPOSED ELEVATIONS

scale date drawn checked  
1:100@A1 11.12.17 RE



**NOTE**

THIS DRAWING IS TO BE READ IN CONJUNCTION WITH ALL OTHER RELEVANT DRAWINGS AND SPECIFICATIONS  
 THIS DRAWING HAS BEEN PREPARED FOR IDENTIFICATION PURPOSES ONLY. VERIFICATION OF DRAWN INFORMATION TO BE CARRIED OUT BY CONTRACTOR PRIOR TO OTHER USE.

The window survey was an external inspection only - some assumptions regarding openings and window replacements have been made

Some windows are fitted with internal security bars

Original windows replaced - generally in upvc

The window supplier must check all windows and opening arrangements

**Alitherm Heritage Windows**

The replacement windows are to be Alitherm Heritage design with fixed light and open-out windows, internally and externally beaded.

All opening vents are hung on concealed stainless steel variable angle friction stays and fitted with cockspur/espagnolette locking mechanisms.

Internal beads and gaskets will accommodate 24, 28, 32 & 36mm units.

Thermal breaks are formed with polyamide strips PA 6.6 25 reinforced with glass fibre, fitted between aluminium extrusions. All profiles are extruded from aluminium alloy 6060/6063 T5/T6 and comply with the recommendations of BS EN 12020-2; 2001/BS 755-9: 2001.

Profiles are to be Electrostatic powder coat finished in white

**Manufacturer:**

Smart Systems Ltd. Arnolds Way, Yatton, North Somerset BS49 4QN.

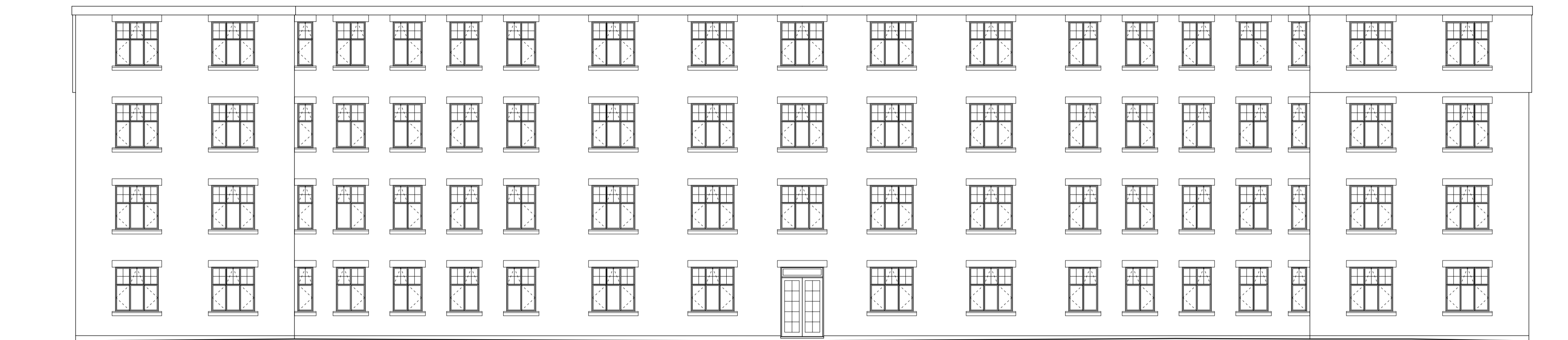
Tel: 01934 876100. Fax: 01934 835169.

Email: [sales@smartsystems.co.uk](mailto:sales@smartsystems.co.uk)

Web: [www.smartsystems.co.uk](http://www.smartsystems.co.uk)

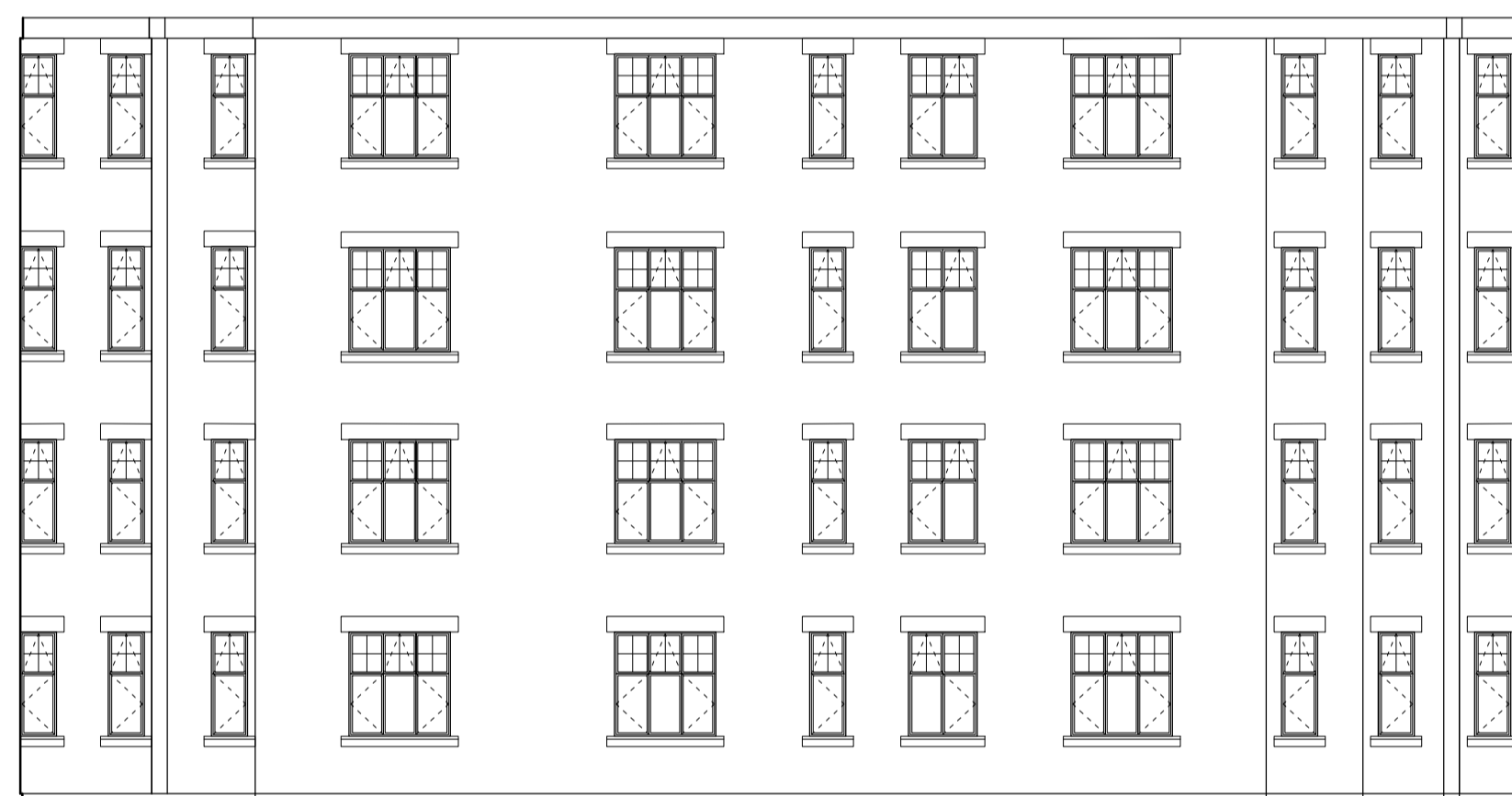
**Thermal:** All windows, in conjunction with a suitable glazing specification, to achieve an average project U-value to meet the current requirements of the approved Building Regulation Document L1/L2 for England and Wales.

Roof level not surveyed



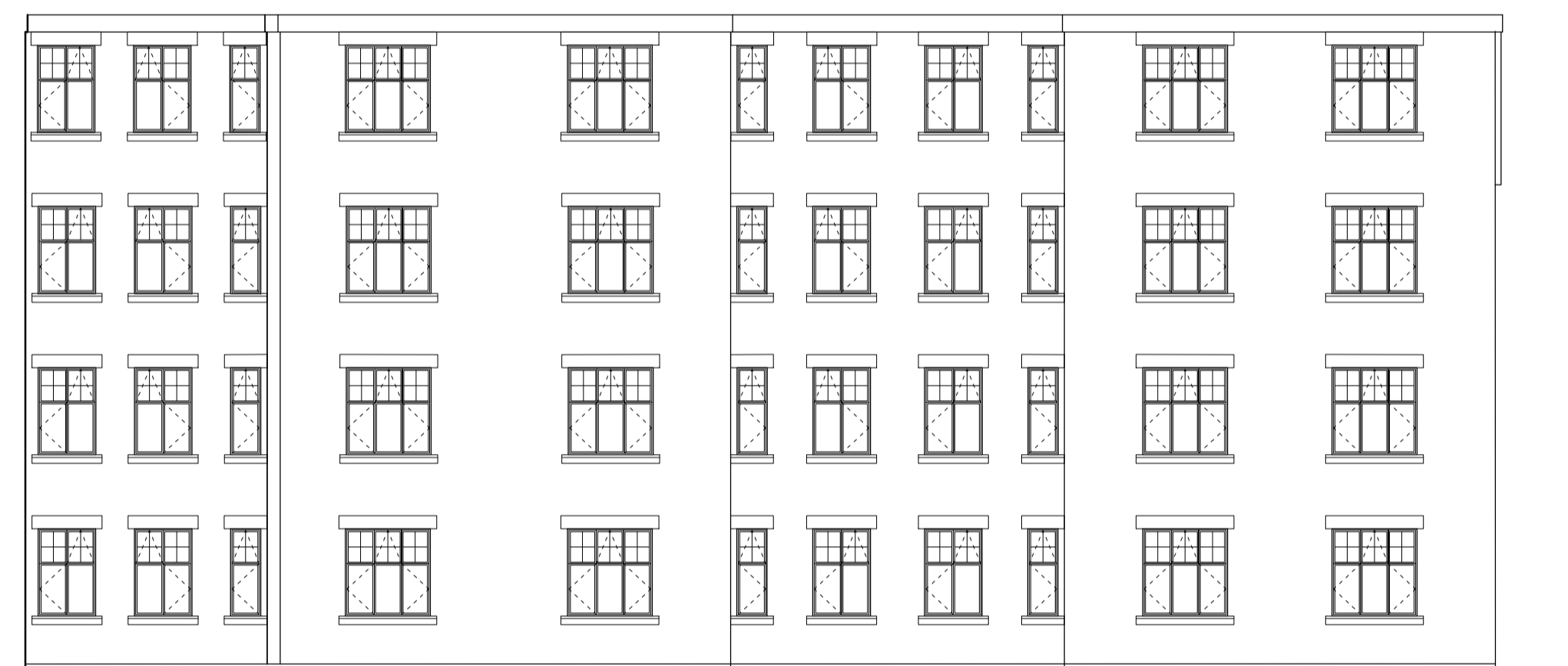
**Elevation - 7**

Roof level not surveyed



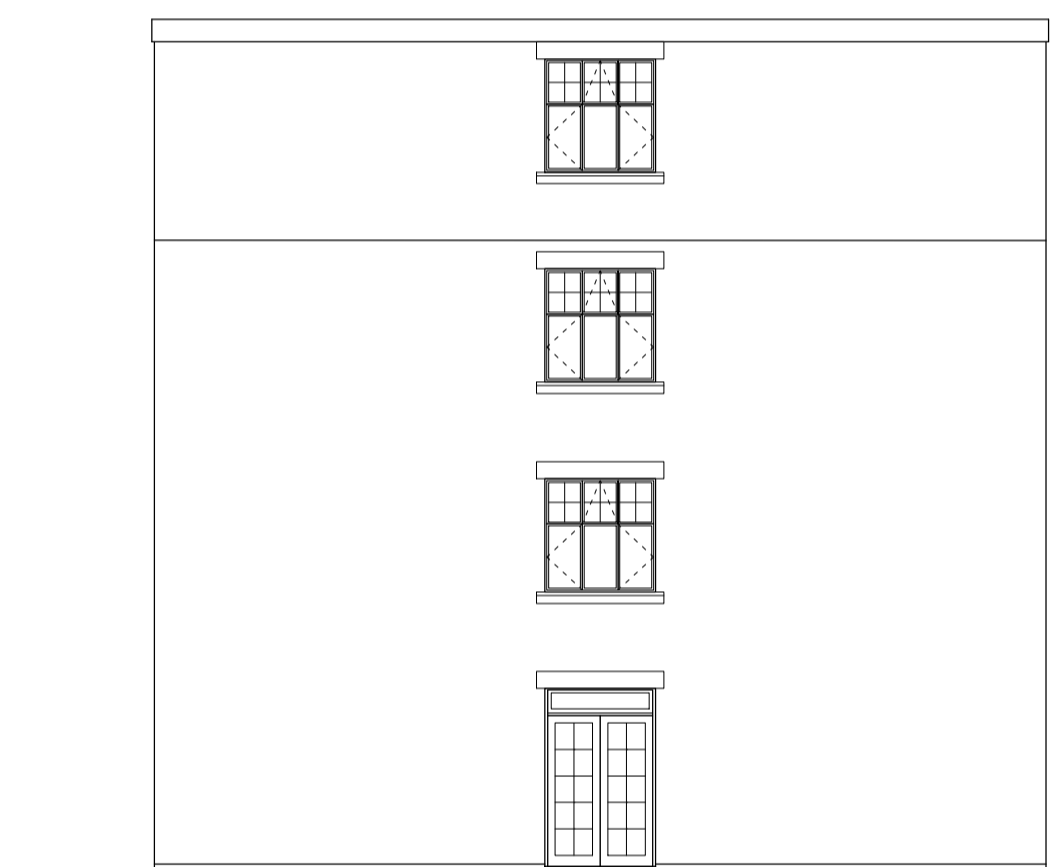
**Elevation - 10**

Roof level not surveyed



**Elevation - 9**

Roof level not surveyed



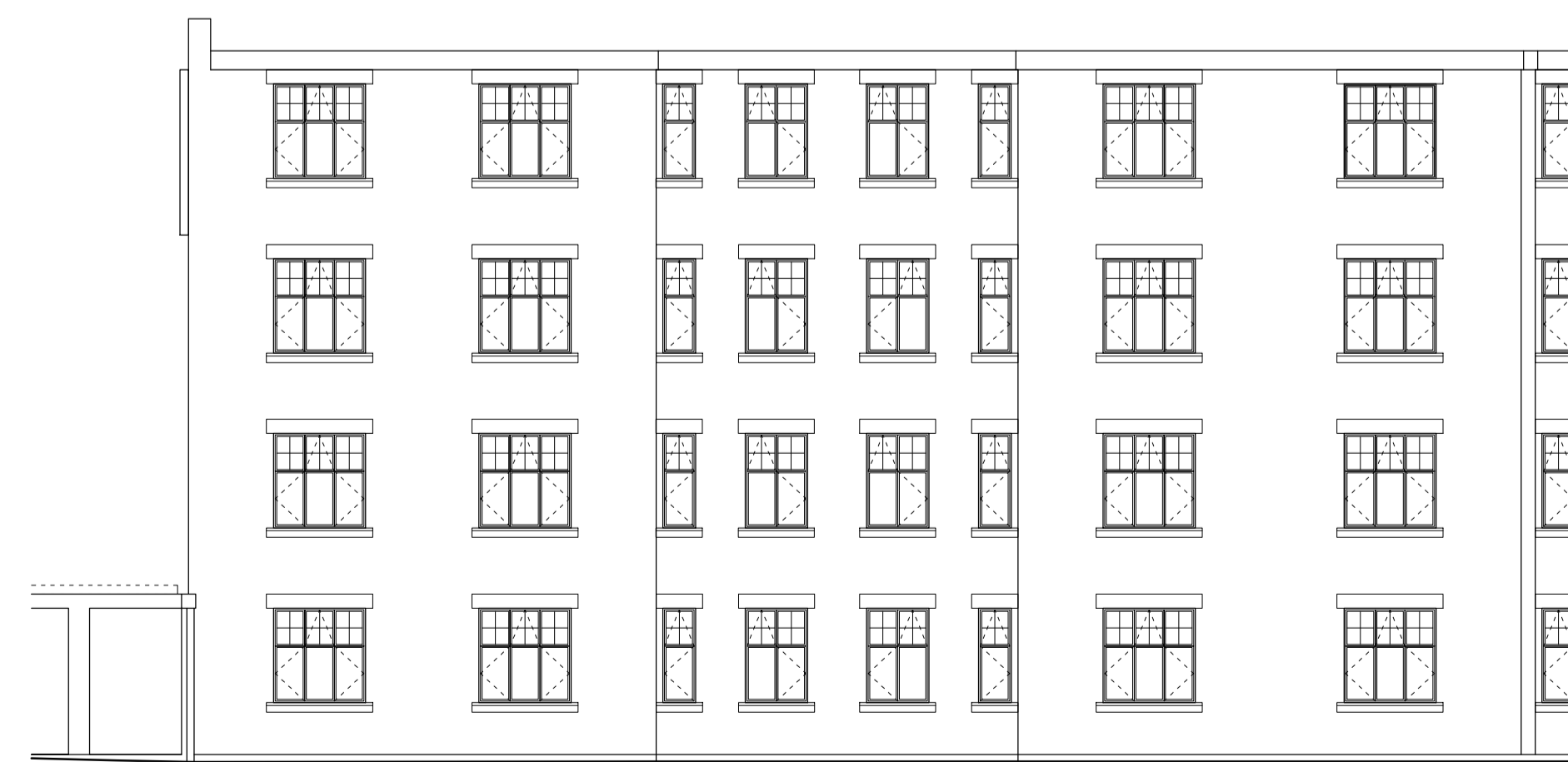
**Elevation - 8**

Roof level not surveyed



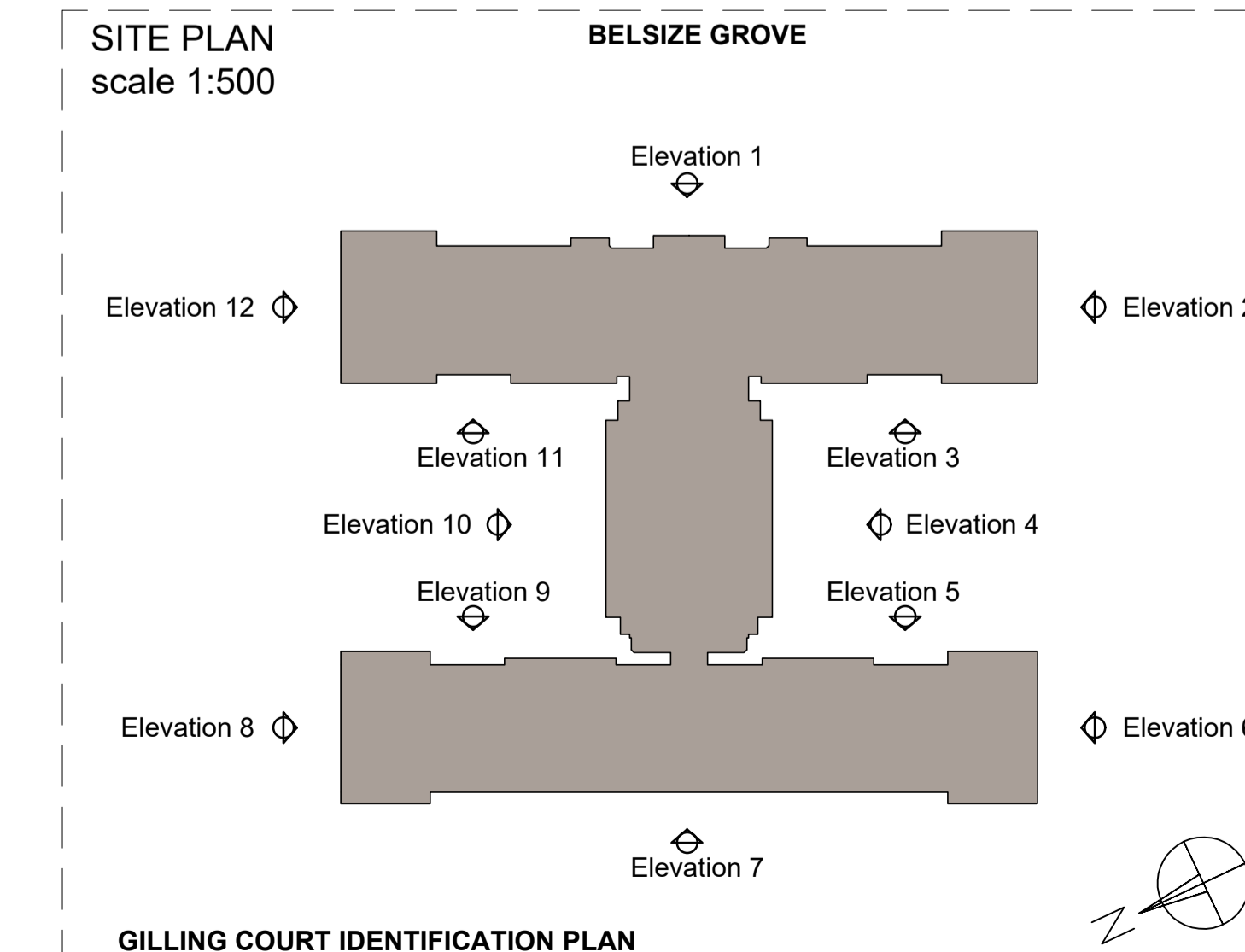
**Elevation - 12**

Roof level not surveyed



**Elevation - 11**

SITE PLAN  
scale 1:500



GILLING COURT IDENTIFICATION PLAN

rev



- Milton House, 1 Milton Road, Peterborough PE2 8DZ Tel: 01733 344695
- 619 Holloway Road, London N19 5SS Tel: 020 7561 0189

project Gilling Court, Belsize Grove no 1735

drawing WINDOW REPLACEMENTS - PROPOSED ELEVATIONS no GA 02

scale 1:100@A1 date 11.12.17 drawn RE checked