

GENERAL NOTES:

- G1 For Site and Grid setting out refer to AXXXX/2000
- G2 All dimensions to be checked on site
- G3 Any discrepancies between drawings to be reported to the Architect immediately.
- G4 All Levels are above Ordnance datum (AOD)
- G5 New Levels are shown thus: +20.345
- G6 Existing Levels are shown thus: EX20.225
- G7 Use Imperial dimensions only. Do not scale from drawings. IF IN DOUBT, ASK.
- G8 Refer to Engineers drawings for all structural and services information.
- G9 For tolerances see the Design Drawings and Specifications
- G10 For details of work subject to Contractor's Design, this shall be subject to the Contractor's Design and approval only. The Contractor is responsible for the detailed design and co-ordination of the installation within the parameters defined in the specification, design drawings, contract terms and contract documents.

G9 Room numbers are shown thus: 119

G10 Door (D) & Window (W) References

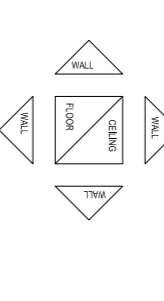


Door No. / Window No. / The Ratio
R402 / R401 / Arched Window Type

G11 Chair height is shown thus 2700

G12 T Sheet Reference shown thus M5-01

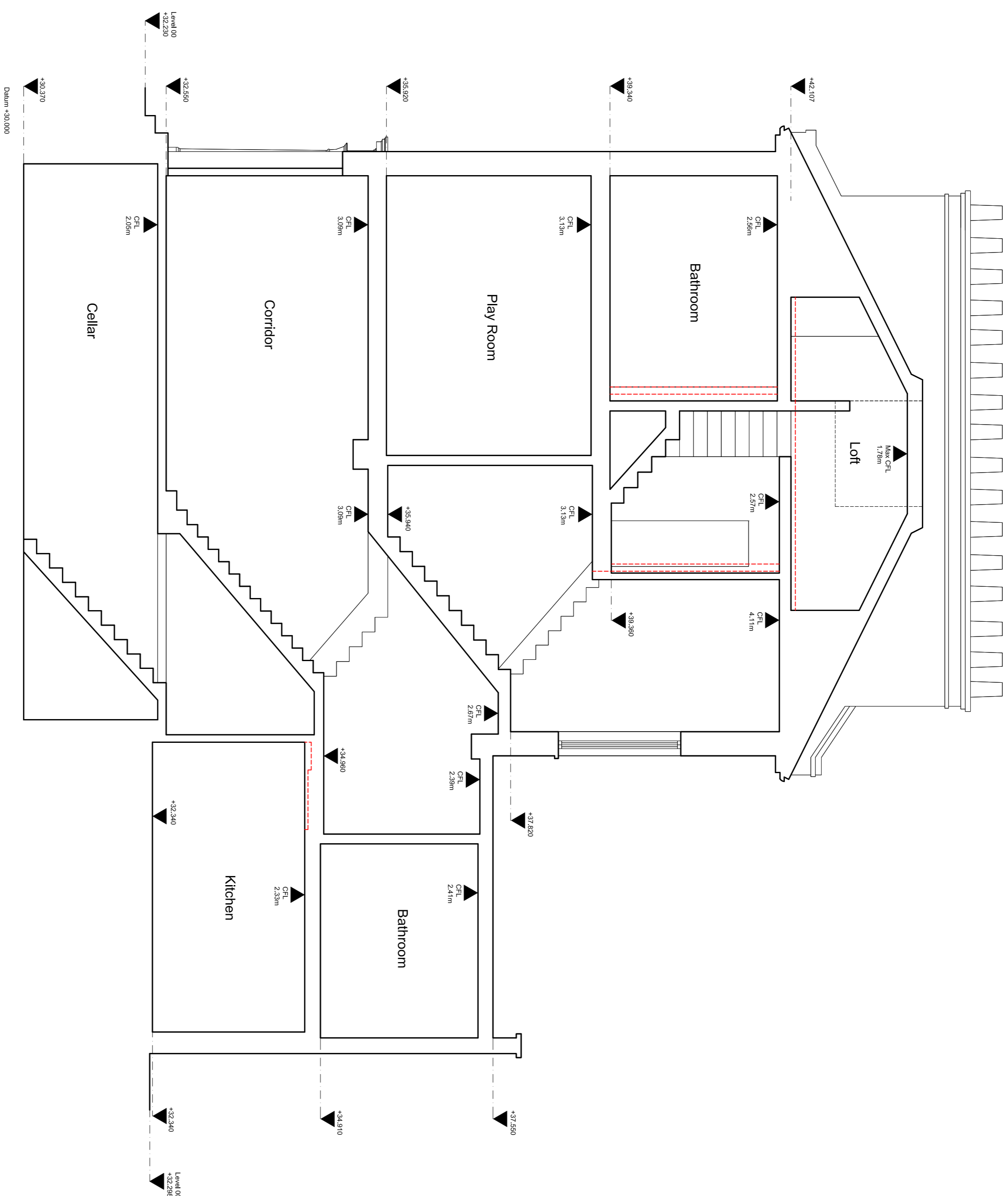
G13 Finishes are shown thus:



G14 Settling Out Points shown thus: S27

G15 Refer to Axxxx9100 for T Sheet references, and to Axxxx9110 to 9167 for Architectural Specifications.

NOTES:



Date	Revision	Status
20/12/17	B	Issue for Construction
20/12/17	B	Issue for Construction
20/12/18	C	Issue for Construction

EDWARD WILLIAMS ARCHITECTS
Newcombe House, 45 Notting Hill Gate, London W1T 3LD, UK
www.edwardwilliamsarchitects.com T. +44 (0)2079850540

Project: 21 Palsill Road
Subject: Section D
Proposed

Scale: 1:50 @ A1 (1:100 @ A3)

Sort Code	Drawing No.	Revision
A21PR	4103	C