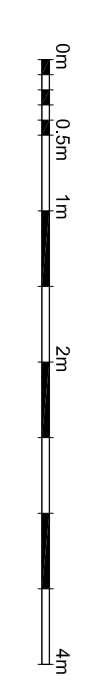
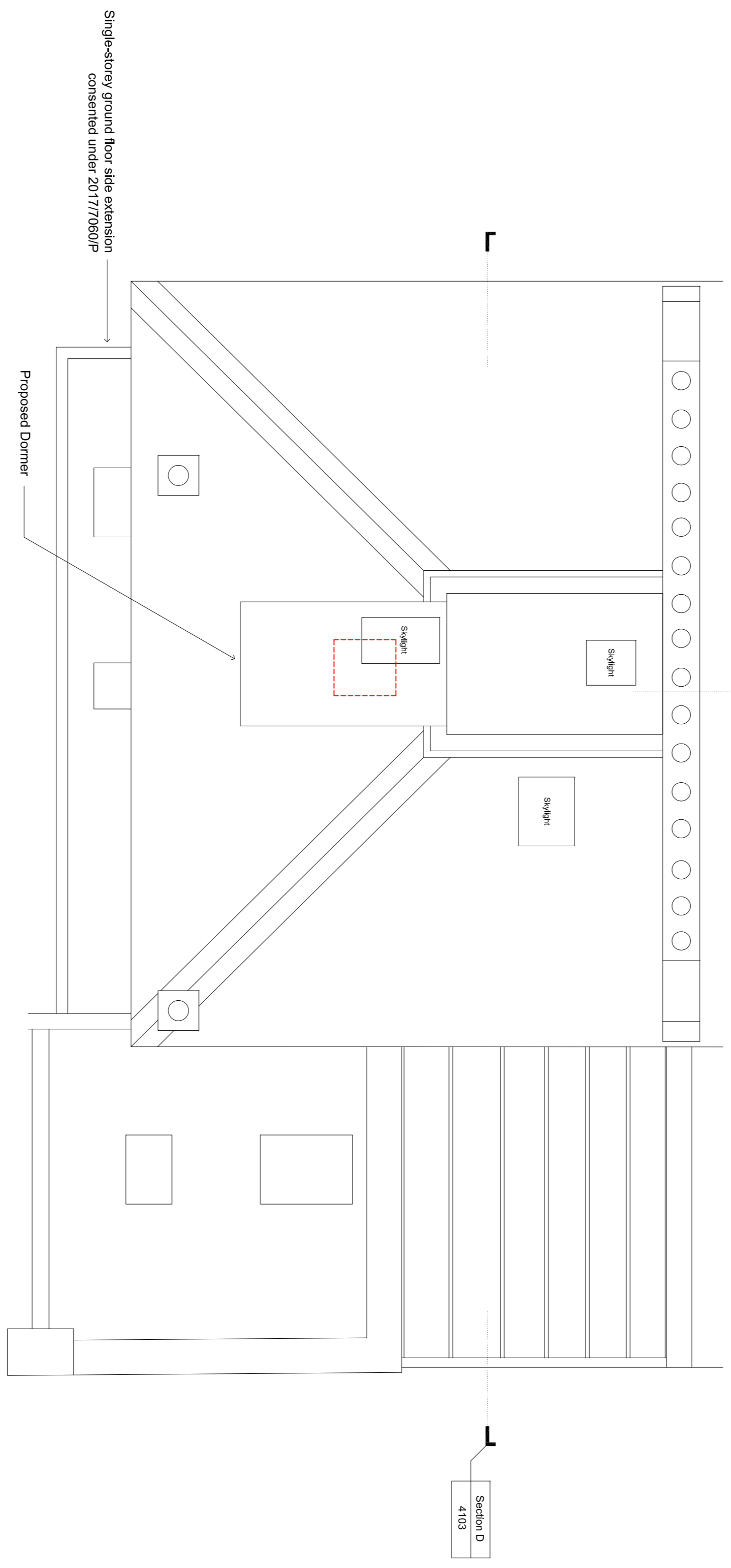


- GENERAL NOTES:**
- G1 For Size and Grid setting out refer to A\XXXX\2000
 - G2 All dimensions to be checked on site
 - G3 Any discrepancies between drawings to be reported to the Architect immediately.
 - G4 All Levels are above Ordnance datum (AOD)
 - G5 New Levels are shown thus: +20.325
 - G6 Existing Levels are shown thus: -15.200
 - G7 Use Imperial dimensions only. Do not scale from drawings. IF IN DOUBT, ASK.
 - G8 Refer to Engineers drawings for all structural and services information.
 - G9 For tolerances see the Design Drawings and Specifications
 - G10 For details of work subject to Contractor's Design, this drawing is not to be used for construction purposes only. The Contractor is responsible for the detailed design and co-ordination of the installation within the parameters defined in the specification, design drawings, contract terms and contract documents.

- G9 Room numbers are shown thus: 119
- G10 Door (D) & Window (W) References R402 W100
- G11 Clear height is shown thus 2700 (finished floor to finished ceiling)
- G12 T Sheet Reference shown thus MS-01
- G13 Finishes are shown thus: 100 100 100
- G14 Settling Out Points shown thus: SP2 SP3
- G15 Refer to A\XXXX\100 for T Sheet references, and to A\XXXX\110 to 319 for Architectural Specifications.

NOTES:



Date	Revision	Status
20/12/2017	B	Issue for Submission
20/12/2017	B	Issue for Submission
14/02/2018	C	Issue for Submission
20/02/2018	D	Issue for Submission

EDWARD WILLIAMS ARCHITECTS
Newcombe House, 45 Notting Hill Gate, London W1T 3LQ, UK
www.edwardwilliamsarchitects.com T: +44 (0)2079859540

Project: 21 Panshull Road
Subject: Roof Plan Proposed

Scale: 1:50 @ A1 (1:100 @ A3)

Sort Code	Drawing No.	Revision
A21PR	3004	D