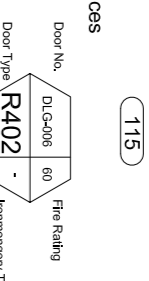

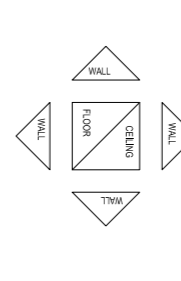
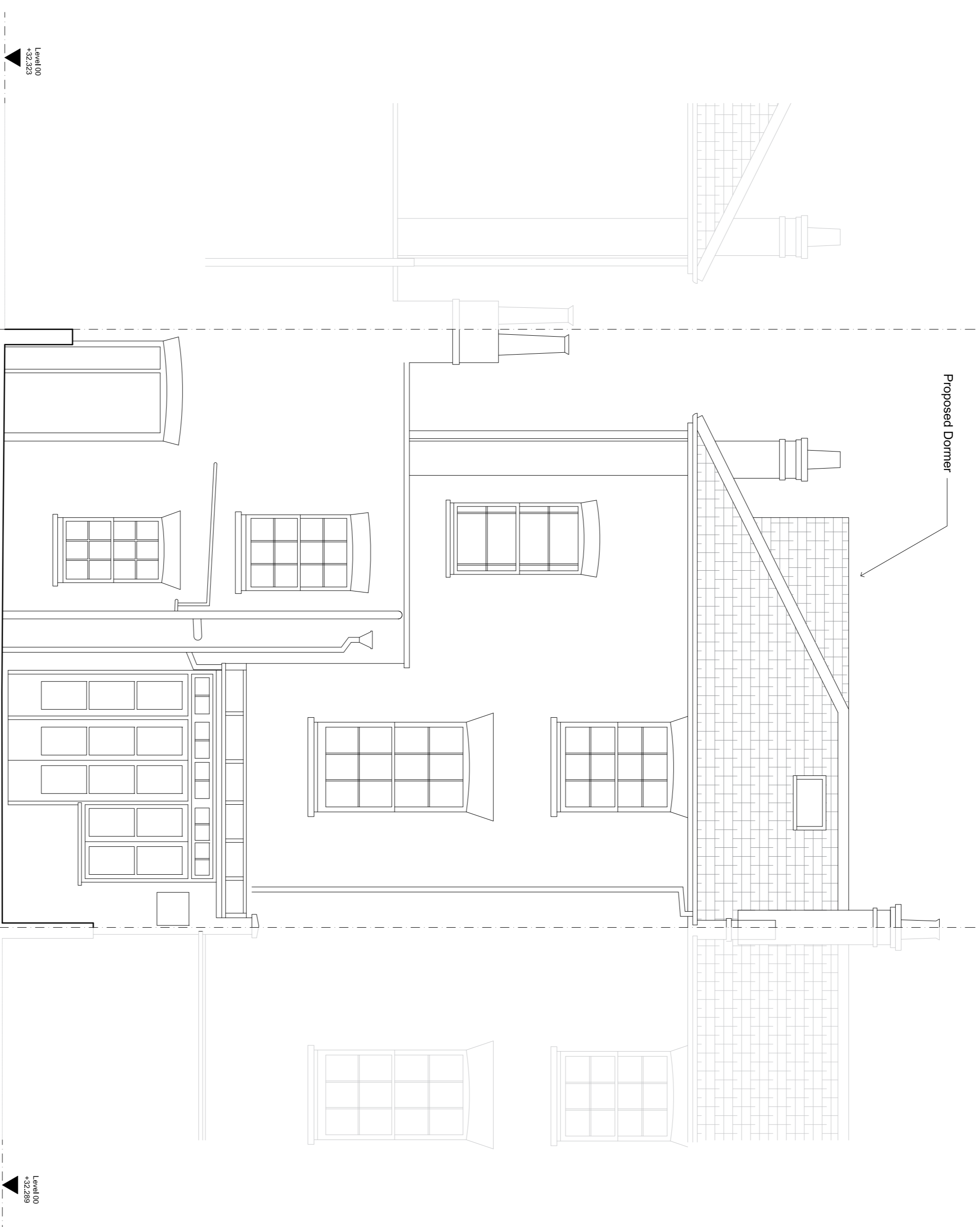


- GENERAL NOTES:**
- G1 For Site and Grid setting out refer to AXXXXX/2000
 - G2 All dimensions to be checked on site
 - G3 Any discrepancies between drawings to be reported to the Architect immediately.
 - G4 All Levels are above Ordnance datum (AOD)
 - G5 New Levels are shown thus: \square 203.25E
Existing Levels are shown thus: \square EX203.25E
Refer to Appendix A for further details.
 - G6 Use Imperial dimensions only. Do not scale from drawings. IF IN DOUBT, ASK.
 - G7 Refer to Engineers drawings for all structural and services information.
 - G8 For tolerances see the Design Drawings and Specifications
 - G9 For elements of work subject to Contractor's Design, this drawing is intended to provide the Contractor with the co-ordination of the installation within the parameters defined in the specification, design drawings, contract terms and compiled documents.

- G9 Room numbers are shown thus: \square 119
- G10 Door (D) & Window (W) References

- G11 Clear height is shown thus


(finished floor to finished ceiling)
- G12 T Sheet Reference shown thus \square M/S-01
- G13 Finishes are shown thus: \square F1

- G14 Settling Out Points shown thus: \square S2
- G15 Refer to AXXXXX/100 for T Sheet references, and to AXXXXX/110 to 310 for Architectural Specifications.

NOTES:



Drawing No: 202000
 21 Patshull Road
 21 Patshull Road
 19 Patshull Road



Date	Revision	Status
13/03/2017	B	Issue for Construction (As Built)
13/03/2017	A	Issue for Construction (As Built)
20/12/2016	C	Issue for Construction (As Built)
22/12/2016	D	Issue for Construction (As Built)
20/12/2016	F	Issue for Construction (As Built)

EDWARD WILLIAMS ARCHITECTS
 Newcombe House, 45 Notting Hill Gate, London W1T 3LD, UK
 www.edwardwilliamsarchitects.com T: +44 (0)2079859540

Project: 21 Patshull Road
Subject: Rear Elevation
 Proposed

Scale: 1 : 50 @ A1 (1 : 100 @ A3)

Sort Code	Drawing No.	Revision
AZ1PR	4001	F