

GENERAL NOTES:

- G1 For Size and Grid setting out refer to AXXXX/2000
- G2 All dimensions to be checked on site
- G3 Any discrepancies between drawings to be reported to the Architect immediately.
- G4 All Levels are above Ordnance datum (AOD)
- G5 Levels are shown thus: +20.345
-20.345
 Refer to Elevation drawings for details.
 Refer to EX-20/25 drawings. IF IN DOUBT, ASK.
- G6 Use figured dimensions only. Do not scale from drawings. IF IN DOUBT, ASK.
- G7 Refer to Engineers drawings for all structural and services information.
- G8 For tolerances see the Design Drawings and Specifications
- G9 For details of work subject to Contractor's Design, this shall be subject to the approval of the Architect only. The Contractor is responsible for the detailed design and co-ordination of the installation within the parameters defined in the specification, design drawings, contract terms and compiled documents.

G10 Room numbers are shown thus: 119

G11 Door (D) & Window (W) References are shown thus: R402 / W100

G12 Clear height is shown thus 2700
 (finished floor to finished ceiling)

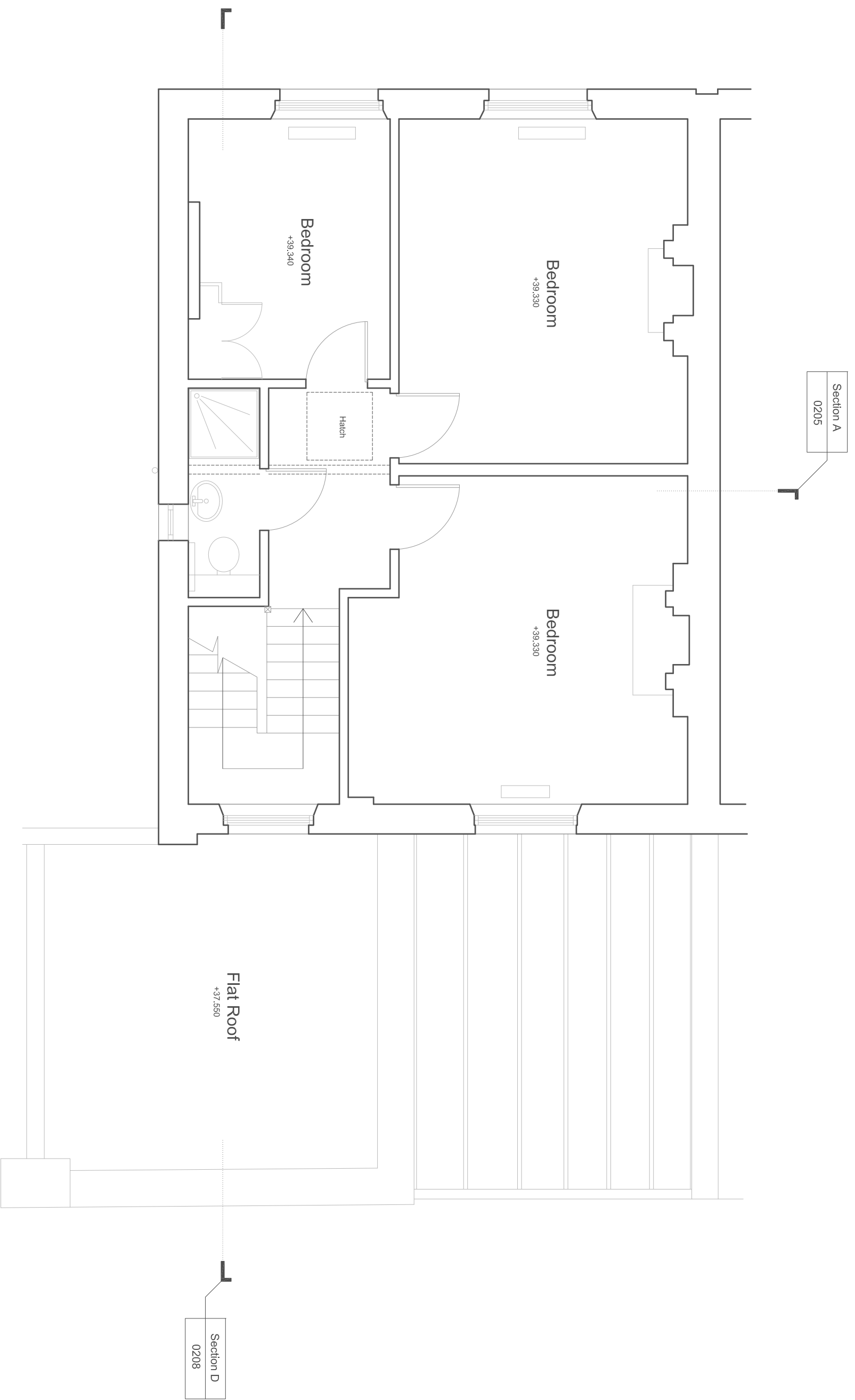
G13 T Sheet Reference shown thus MS-01

G14 Finishes are shown thus: S2 P

G15 Settling Out Points shown thus: S2 P

G16 Refer to AXXXX/100 for T Sheet references, and to AXXXX/110 to 3107 for Architectural Specifications.

NOTES:



Existing Second Floor Plan

EDWARD WILLIAMS ARCHITECTS LTD, 45 Notting Hill Gate, London W1A 1AA, UK

www.edwardwilliamsarchitects.com T: +44 (0)2079850540

Project: 21 Palsbüll Road

Subject: Second Floor Plan Existing

Scale: 1:50 @ A1 (1:100 @ A3)

Sort Code	Drawing No.	Revision
A21PR	0202	C

Date	Revision	Status
20/12/2017	B	Issue for Construction (Architect's Design)
20/12/2017	C	Issue for Construction (Contractor's Design)

EDWARD WILLIAMS ARCHITECTS
 Newcombe House, 45 Notting Hill Gate, London W1A 1AA, UK
 www.edwardwilliamsarchitects.com T: +44 (0)2079850540