

This drawing is © C4 Consulting and is not to be copied, reproduced or re-distributed either in whole or in part without the prior written permission of the originator.

The originator shall have no responsibility for any liability, loss, cost, damage or expense arising from or relating to any use of this document other than for its intended purpose on this project.

This drawing shall be read in conjunction with all other relevant drawings, specifications and associated documentation. Any discrepancies, errors or omissions are to be reported to the originator before proceeding with work.

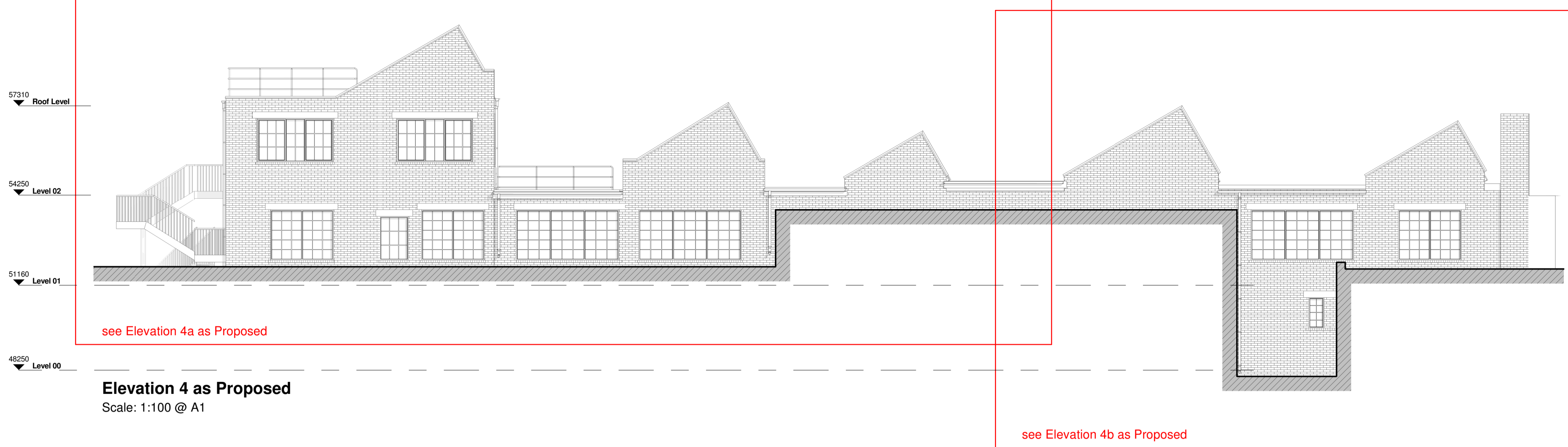
All dimensions are to be checked on site by the contractor prior to proceeding with any work. This drawing shall not be scaled to ascertain any dimensions, work to figured dimensions only.

**DISCLAIMER**  
When this drawing is issued in CAD, it is an uncontrolled version issued for information only, to enable the recipient to prepare their own documents/drawings for which they are solely responsible.

**SOFTWARE INTEROPERABILITY**  
C4 Consulting prepared this drawing using Autodesk REVIT Architecture.

C4 Consulting does not accept liability for any loss or degradation of any information held in the drawing resulting from the translation from the original file format to any other file format or from the recipient's reading of it in any other programme.

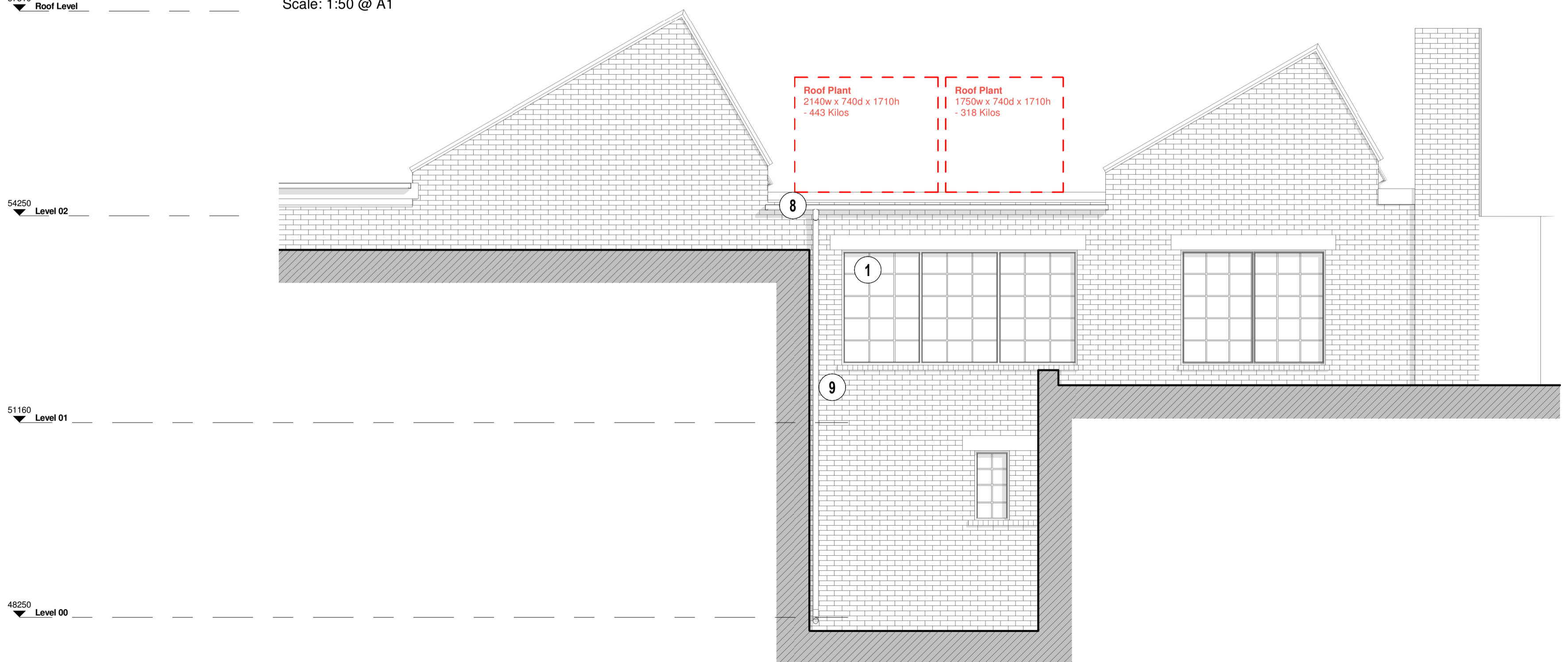
Hazard Identification		
ref	hazard	date



**Elevation 4 as Proposed**  
Scale: 1:100 @ A1



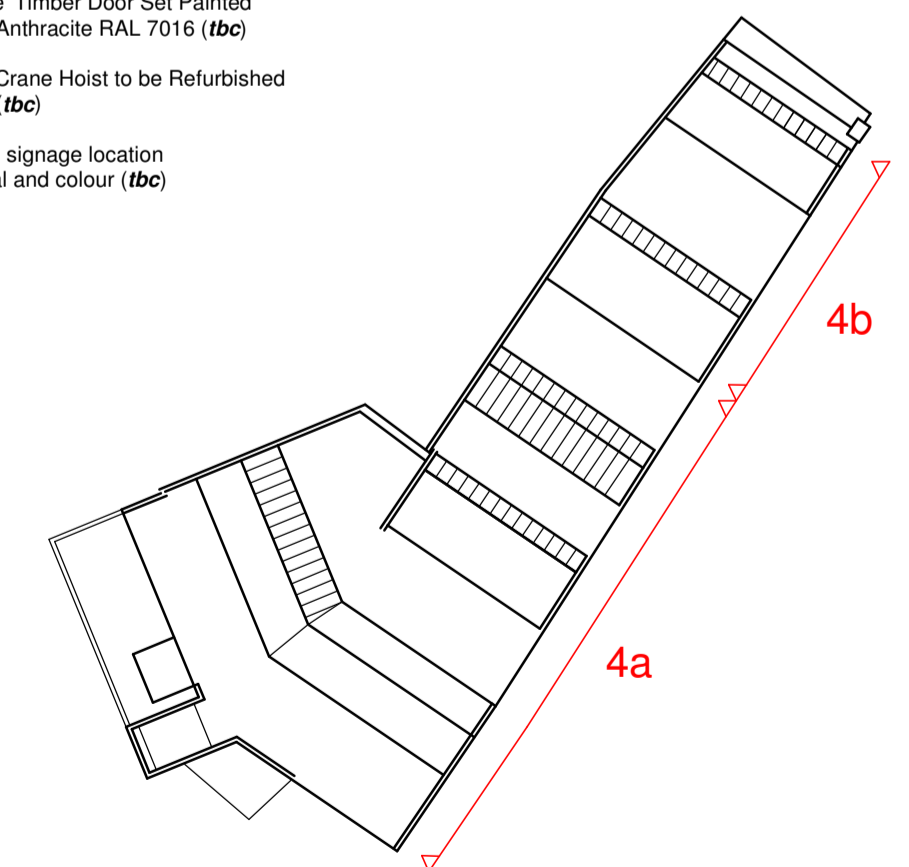
**Elevation 4a as Proposed**  
Scale: 1:50 @ A1



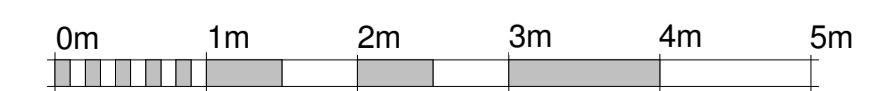
**Elevation 4b as Proposed**  
Scale: 1:50 @ A1

**Materials Key - PROPOSED**

- Kawneer GT70 Slimline Aluminium Renovation Window or similar approved - colour Anthracite RAL 7016 (*tbc*)
- Brick Slips - colour (*tbc*)
- K Rend Through-coloured Silicone Render or similar approved - colour White (*tbc*)
- Proteus HR Rainscreen Cladding or similar approved - Weathered COR-TEN Steel
- Reclaimed Welsh Slate Roof Tiles
- Single-Ply Membrane / GRP Roofing / Roofing Felt - *material tbc*
- Kawneer AA 50mm Curtain Wall System or similar approved - colour Anthracite Grey RAL 7016 (*tbc*)
- EPPC Aluminium Fascia Boards, Copings - colour Anthracite Grey RAL 7016 (*tbc*)
- EPPC Aluminium Rainwater Gutters and Downpipe, Soil Stacks - colour Jet Black RAL 9005 (*tbc*)
- Galvanised Steel Guardrail to be painted - colour Anthracite RAL 7016 (*tbc*)
- Steel Security Fire Door Set / Lower Bin Door Set - colour Anthracite RAL 7016 (*tbc*)
- 'Bespoke' Timber Door Set Painted - colour Anthracite RAL 7016 (*tbc*)
- Historic Crane Hoist to be Refurbished - colour (*tbc*)
- Potential signage location - material and colour (*tbc*)



**Key Plan**



VISUAL SCALE 1:50 @ A1

C	Updated for PLANNING	SW	05.02.18
B	Updated for PLANNING	SW	16.01.18
A	Additional Notes Added	SW	10.01.18
rev	revision details	by	date

**C4 Consulting**

The Chapel, Old Cherry Lane,  
Lymington, Hampshire  
WA13 0TA  
T 01925 751 852  
E info@c4consulting.co.uk  
W www.c4consulting.co.uk

Project Management • Architecture • Cost Consultancy • Building Surveying

**Client**  
Industry House Developments Limited

**Project**  
Industry House  
23-25 Hampshire Street, London NW5 2TE

**Drawing Title**  
Elevations as Proposed - Sheet 2 of 3

Drawn by	S.Wardle	Date	
Checked by	J.Pass	Date	
Job no.	17-048	Scale	As indicated @ A1
Drg no.	C4C-B1-Z1-A1-20-E2-LL-202	Revision	C