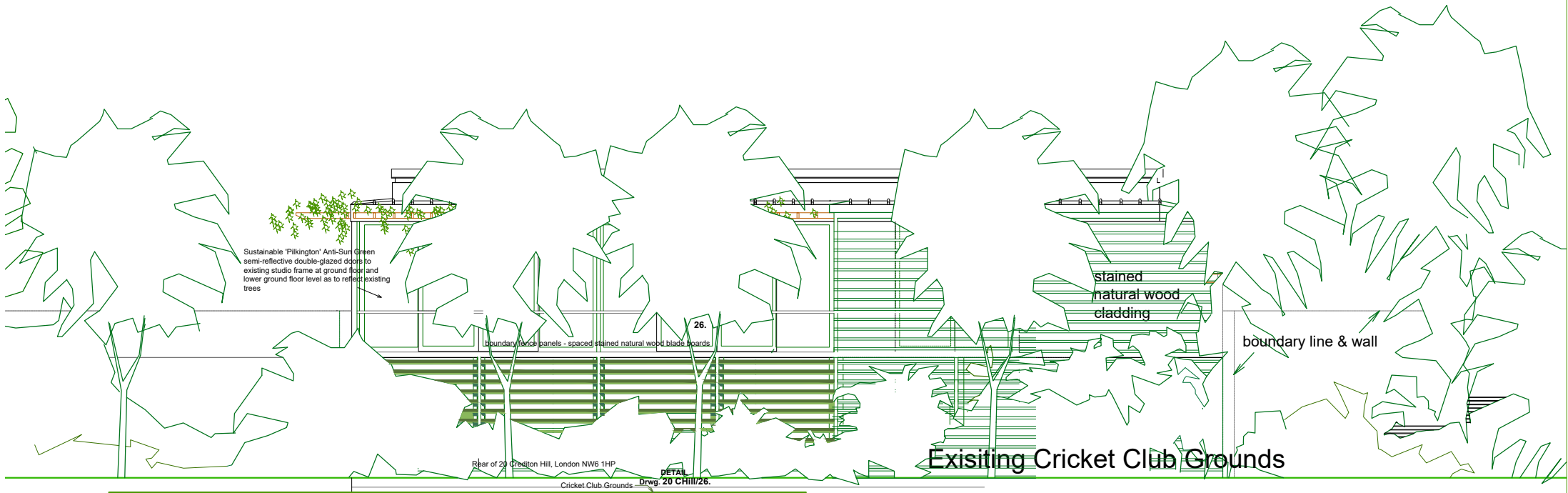


# REVISED REAR ELEVATION

(Existing young trees and shrubs superimposed as viewed from the Cricket Grounds)



Existing Cricket Club Grounds

**Rear of 20 Crediton Hill, NW6**

View of the Revised Rear Elevation  
seen with existing vegetation and young trees retained in place

PM&A ARCHITECTS  
e-mail: info@pmanda.com  
Tel : 07921 771108



**Drwg No. 20CHill/ 09.-2.**