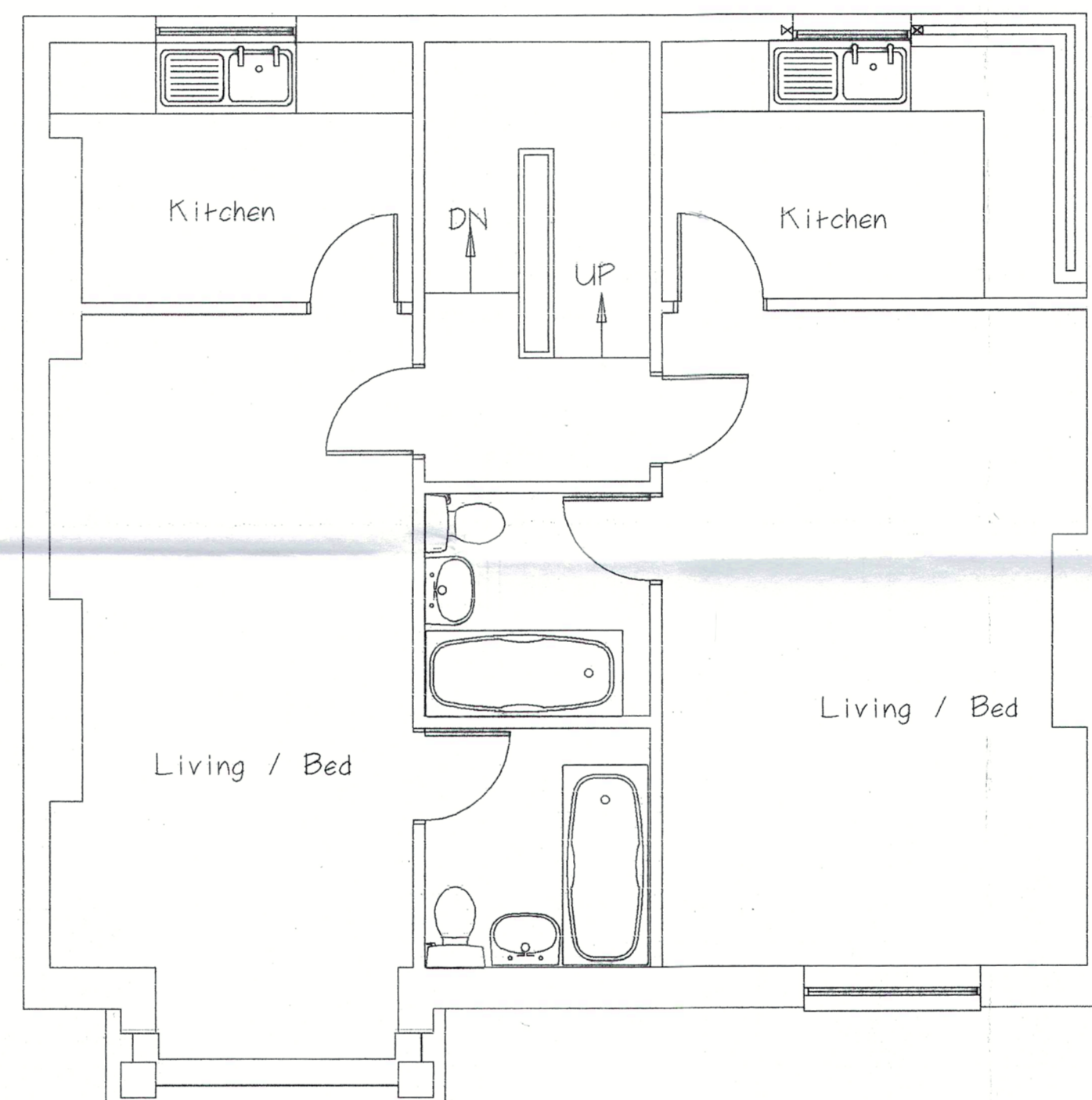
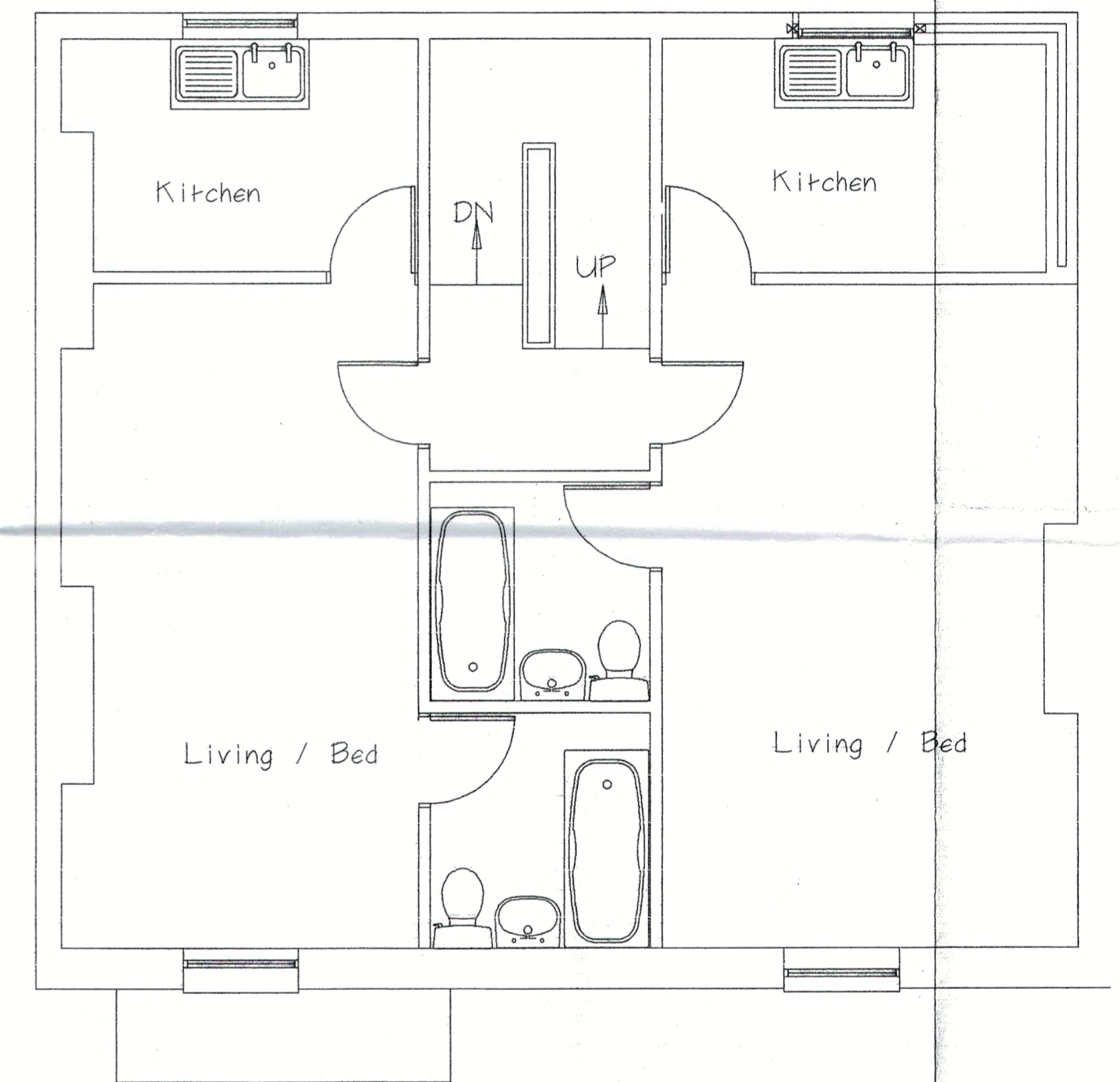


Ground Floor



First Floor



Second Floor

PROPOSED LAYOUT

27 SHERRIFF ROAD, LONDON,
NW6 2AS

SCALE 1:50

(DO NOT SCALE OFF THIS DRAWING)

DATE: JANUARY 2018

DRG. NO: 2018/001

NOTES:

A mixed fire alarm system already in place in accordance with BS5839 Pt:62004. Checked annually and upgraded accordingly by ASA Fire Systems, 11 Apex Court, 22, Sutherland Road, London W13 0DU.

Emergency lighting system in place with infra-red movement detector. Emergency escape lighting already provided using I/R movement detection system.

PLANS SUBMITTED BY

MR FD MANTEGHI
51 WOTTON ROAD,
LONDON,
NW2 6PU
07951 571994