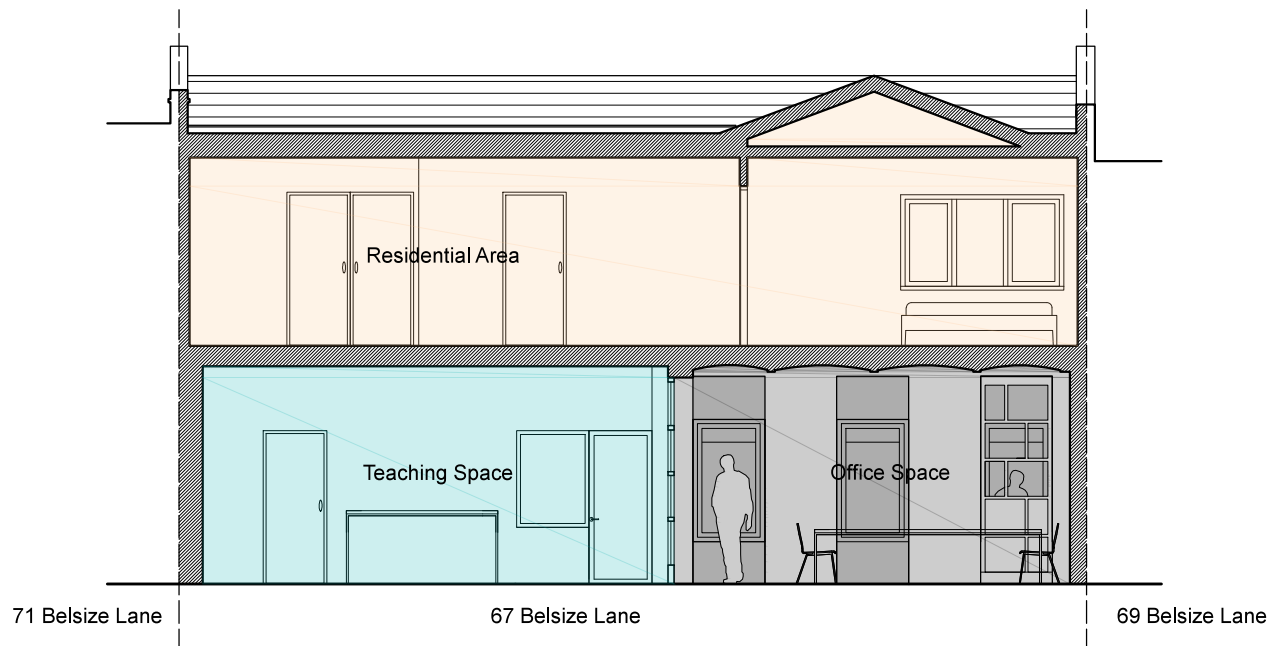
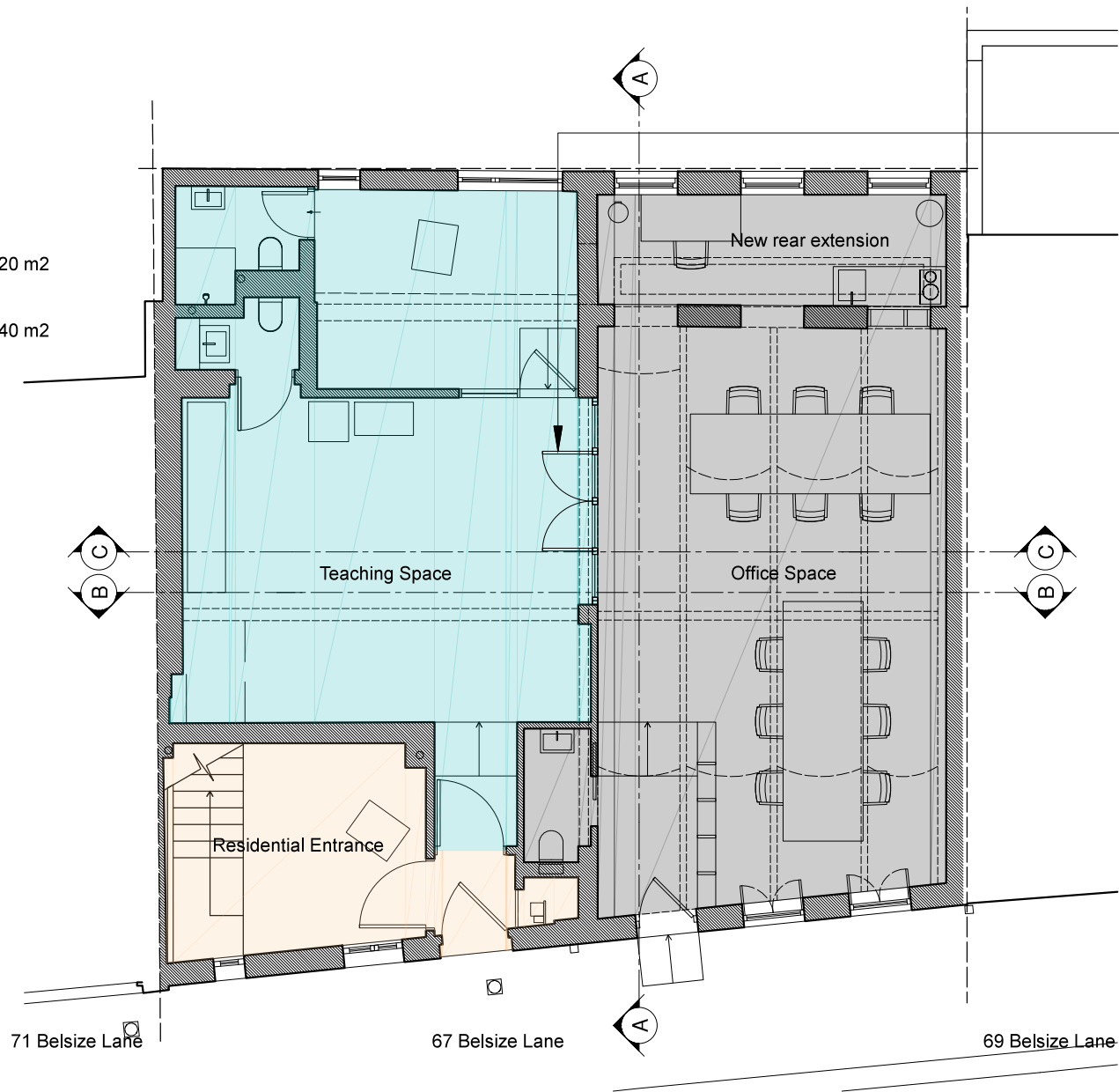


SECTION C-C



GROUND FLOOR

GIA: 51.20 m2
 GIA: 57.40 m2



New opening doors between new office space and teaching area. Fire rated timber doors with obscure double glazing

Residential
 Education space
 Office space



NOTES

DO NOT SCALE FROM THIS DRAWING EXCEPT FOR THE PURPOSES OF PLANNING AND BUILDING REGULATIONS. ALL DIMENSIONS TO BE CHECKED ON SITE.

Gross Internal Area (GIA) m2
 Education Area : 51.20 m2
 New Rear Extension Area : 9.60 m2
 Total Proposed Office Area : 57.40 m2

REVISION: **B**

PROJECT TITLE
 67 BELSIZE LANE

AURAA
 STUDIO

www.auraa.studio 1A Chalk Farm Parade
 info@auraa.studio London NW3 2BN

TITLE
 SECTION C-C AND GROUND FLOOR PLAN AS PROPOSED

DATE 22.02.2018

SCALE 1/100 @ A3

DRAWN LC / RL

STATUS INFORMATION

DRG No 1736_PA_010

REV: **B**