

General Notes
All dimensions to be verified on site
To be read in conjunction with all relevant documents
In the event of discrepancy notify the Architect immediately
This document is copyright of Hugh Cullum Architects Ltd

Issue Status
SK Sketch E Existing Condition
D Design P Permissions
T Tender C Contract

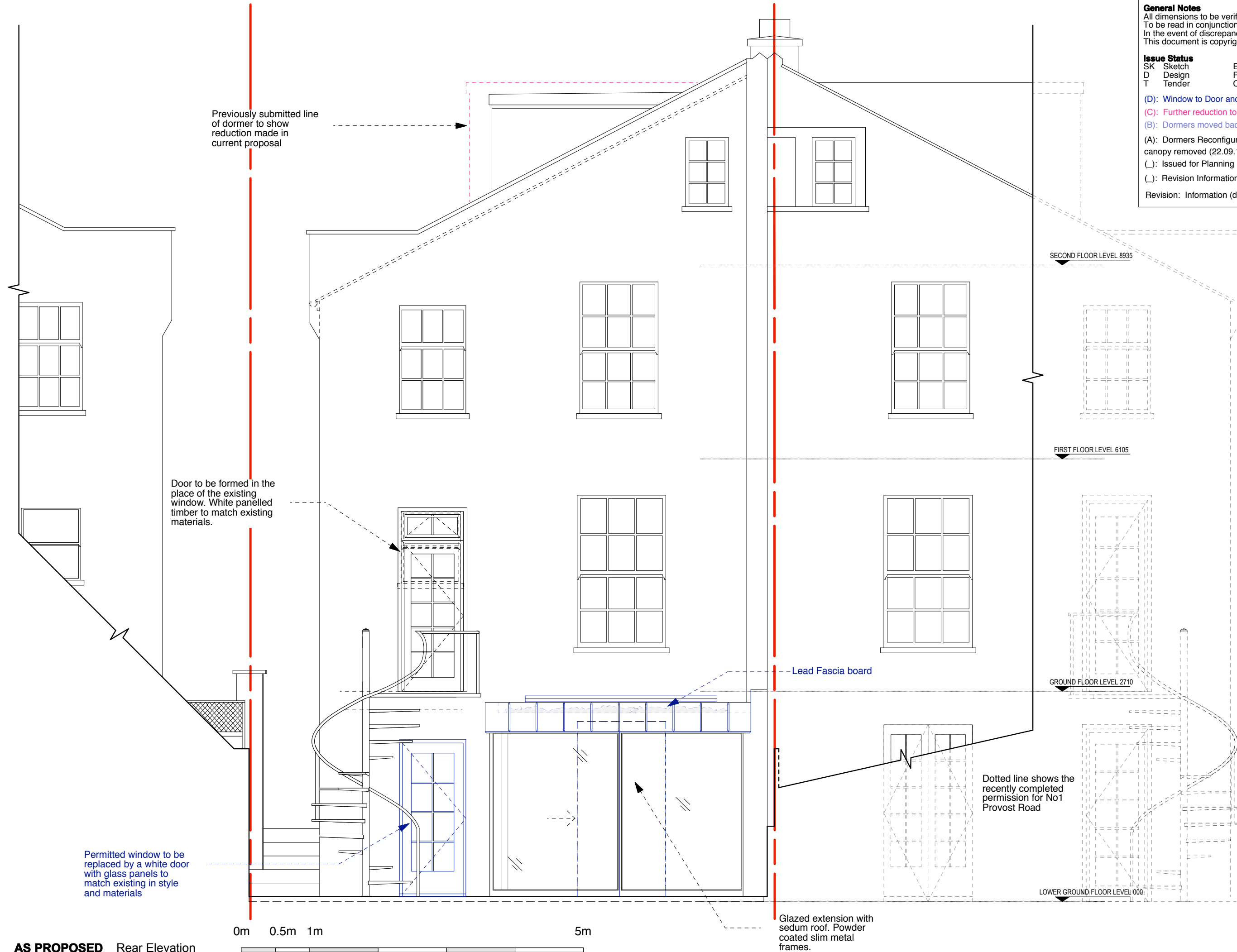
(D): Window to Door and lead cladding (22.02.18/OA/HC)
(C): Further reduction to dormers (04.10.17/OA/HC)
(B): Dormers moved back appr 400mm (27.09.17/OA/HC)
(A): Dormers Reconfigured to two smaller ones & glazed canopy removed (22.09.17/OA/HC)
(_: Issued for Planning (14.08.17/OA/HC)
(_: Revision Information (00.00.02/AA/BB)
Revision: Information (date/drawn by/checked by)

2 Provost Road

Planning Proposal
Rear Elevation
1:50@A3 August 2017

PR002-P126(D)

HUGH CULLUM
ARCHITECTS LTD
Bloomsbury Design
61b Judd Street
London WC1H 9QT
t 020 7383 7647
f 020 7387 7645
mail@hughcullum.com



AS PROPOSED _ Rear Elevation