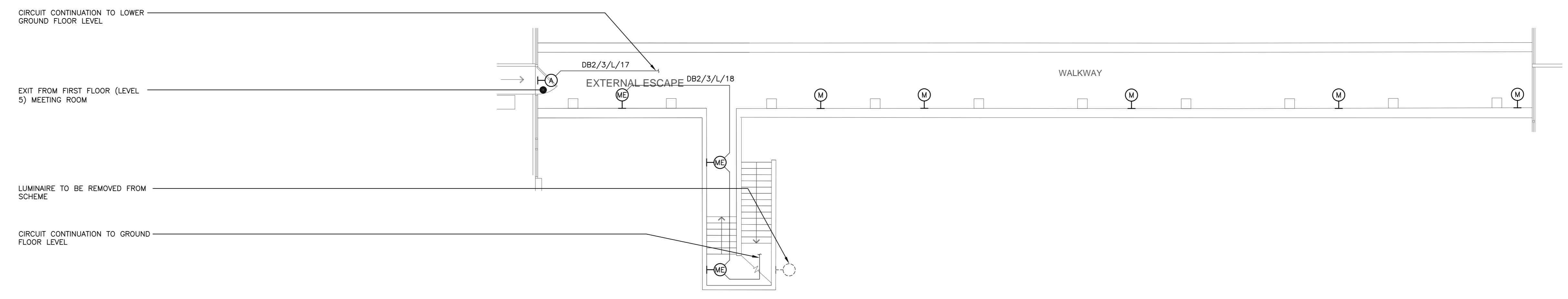
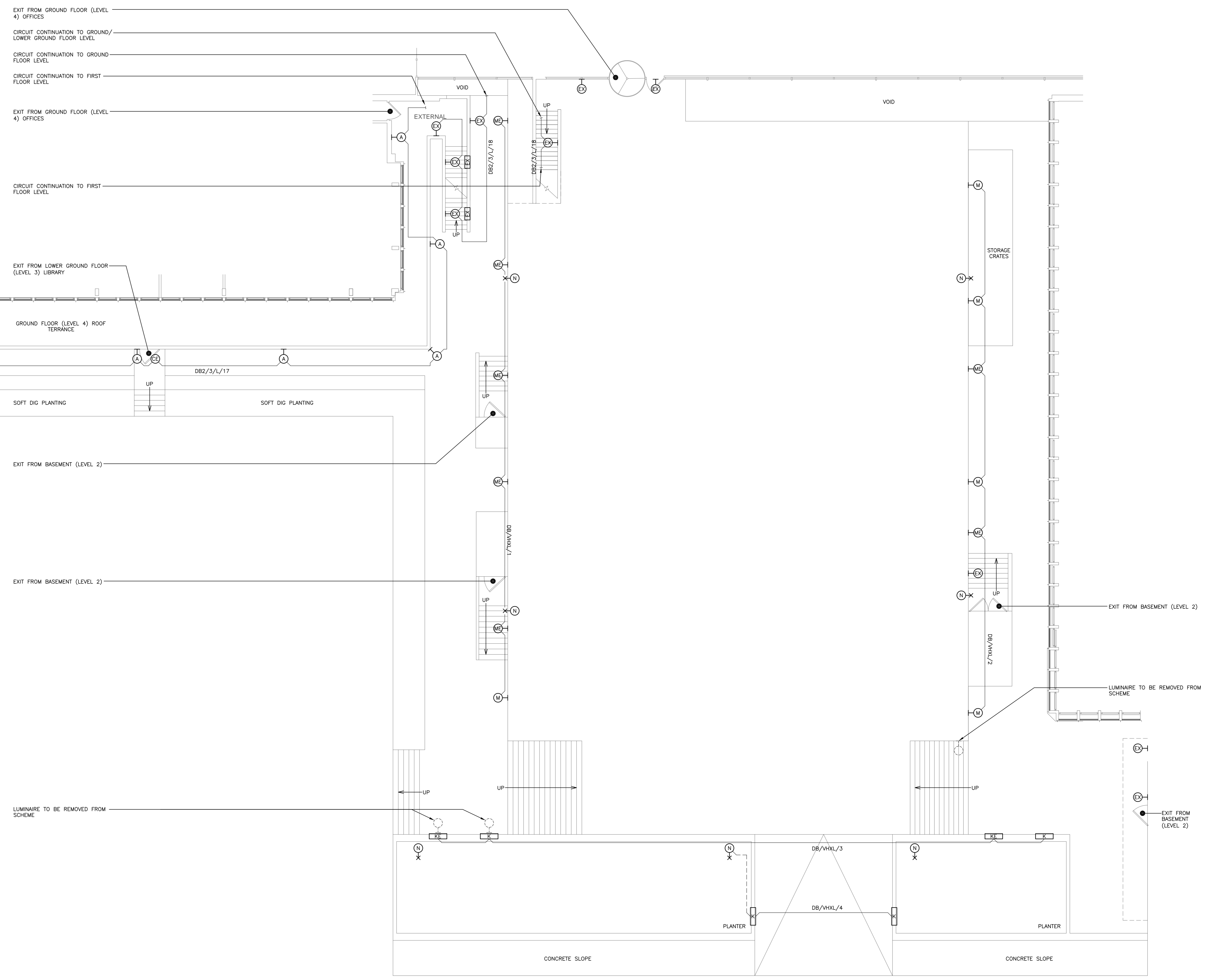


Notes:
 1. THIS DRAWING INDICATES ENGINEERING SERVICES INSTALLATION WORK ONLY AND MUST NOT BE TAKEN AS ACCURATELY REPRESENTING ANY OTHER DETAIL.
 2. THIS DRAWING SHOWS THE DESIGN INTENT AND MUST NOT BE USED FOR INSTALLATION PURPOSES.

- Legend:
- (A) SURFACE MOUNTED LED FLOOD LIGHT
 - (M) SURFACE MOUNTED LED BULKHEAD LUMINAIRE 'E' DENOTES EMERGENCY VERSION
 - (R) RECESSED MOUNTED LUMINAIRE 275mm(L) x 70mm(W) x 100mm(D)
 - (N) EXISTING POST TOP MOUNTED LUMINAIRE
 - (E) EXISTING SURFACE MOUNTED FLOOD LIGHT TO REMAIN
 - (X) EXISTING RECESSED MOUNTED LUMINAIRE 403mm(H) x 130mm (W) x TBC Depth
 - (O) EXISTING SURFACE MOUNTED FITTING TO BE REMOVED



FIRST FLOOR - UPPER WALKWAY



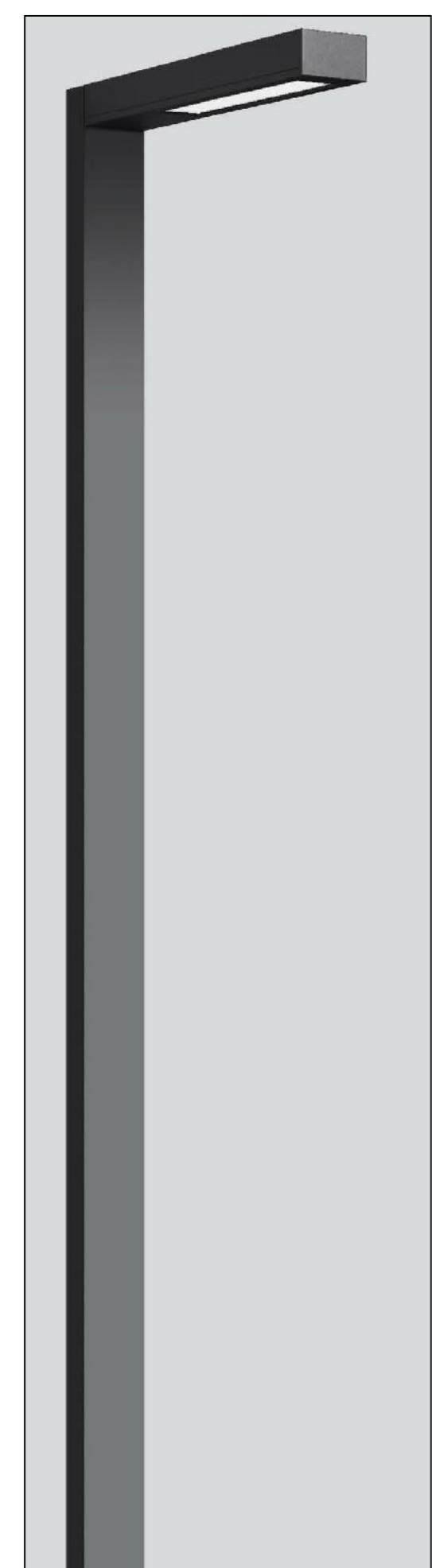
LUMINAIRE TYPE A
 BRONZE/WHITE EXTERNAL ISPO
 FRAMELESS LED FLOOD LIGHT
 C/W BLACK FINISH - 1013B



LUMINAIRE TYPE K/KE
 DESIGN PLAN TUSCAN 88 LED
 LUMINAIRE C/W TEXTURED BLACK
 FINISH



LUMINAIRE TYPE M/ME
 MID FRONTIER EXTERNAL SURFACE
 MOUNTED LED BULKHEAD LUMINAIRE -
 MFINI/LED/23W/STD/830/BR/HD &
 MFINI/LED/23W/STD/830/BR/HD/ME3



LUMINAIRE TYPE N
 BEGA 88977 LED COLUMN

Revisions:

| Ref. | Date | Description | By | Agr |
|------|----------|-------------------|----|-----|
| P1 | 06-02-18 | PRELIMINARY ISSUE | SA | SA |
| P2 | 19-02-18 | PRELIMINARY ISSUE | SA | SA |

Location Plan:

FOWLER MARTIN
 CHARTERED BUILDING SERVICES ENGINEERS
 1-2 Grange Court, The Limes, Ingletons, Evesham, CV22 0JH
 T 01773 550 802 F 01773 550 804
 ISO 9001 ISO 14001
 For further information contact: info@fowlermartin.com www.fowlermartin.com

Client:
 UNIVERSITY COLLEGE LONDON
 ESTATES AND FACILITIES
 GOWER STREET
 LONDON
 WC1E 6BT

Project:
 IOE 20 BEDFORD WAY REMEDIAL WORKS
 TO COURTYARD EXTERNAL LIGHTING

Title:
 EXISTING EXTERNAL LIGHTING LAYOUT

Date: 07-12-17 Designed by: SA
 Paper Size: A0 Approved by: SA
 Scale: 1:100 Drawn by: LW
 Dwg. Ref.: 1717-ES-101 P2