

14045 - Camden Lock Village (Hawley Wharf)
Brick Selection / Scope
Buildings A, WX, C, DE & V

Document Control

Job Title:	Camden Lock Village
Job number:	14045
Report title:	Brick Selection Scope
Report number:	R032
Revision:	04
Date of issue:	November 2017
Purpose of issue:	For Information
Compiled by:	Keval Patel - AHMM Architects Nick Lambert - AHMM Architects Jazmin Rogers - AHMM Architects
Reviewed by:	Kevin Hong - AHMM Architects Anita Howard - AHMM Architects
Date reviewed:	November 2017
File name/location	AHMM Images 2014\14045 Camden Lock Masterplan - Build\5.0 Reports\R\RP032_R_Resi brick selection-scoping update

Contact details

Kevin Hong
khong@ahmm.co.uk

Morelands
5-23 Old Street
London
EC1V 9HL

T: 020 7251 5261
F: 020 7251 5123
www.ahmm.co.uk

**ALLFORD
HALL
MONAGHAN
MORRIS**

Executive Summary

The intent of this document is for information only. It is intended to be an update on current status of brick / mortar selection to client agreement.

This is not to be considered as part of the construction information in whole or in part. Any inaccuracies should be brought to the attention of the contact listed adjacent in the Document Control information.

Although initial discussions and viewings of the brick mock up panels have taken place, formal brick sign off with Camden Planning is to be determined.

Building DE

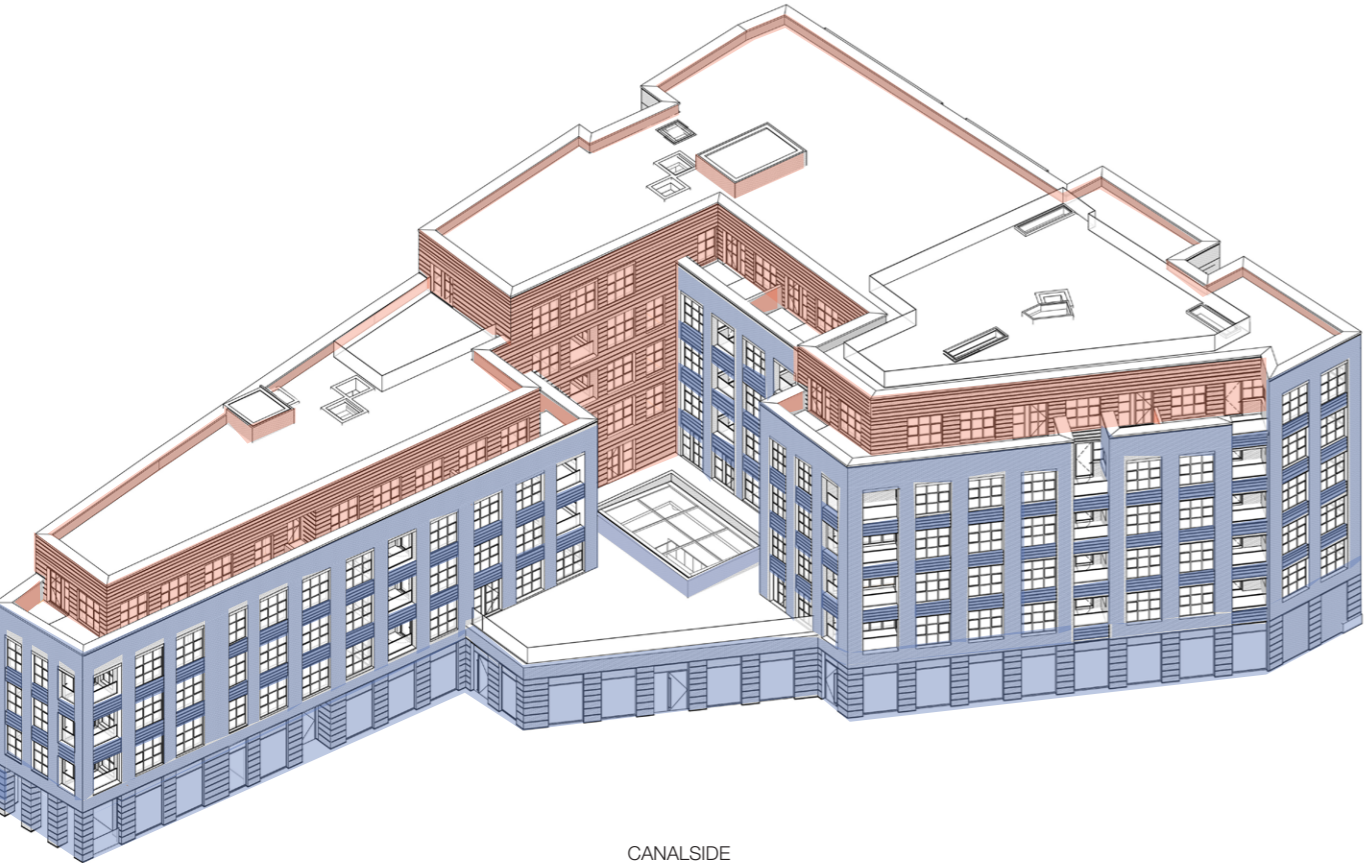
- BRICK:** 100% Dark facings
- BRICK:** 50:50 Dark facings:First Quality Multi
- BRICK:** 100% First Quality Multi

- MORTAR:** M3 ANHLE 102 - Light Brown (CPI mortars)
- MORTAR:** M3 ANHLE 101 - Straw Brown (CPI mortars)
- MORTAR:** M3 ANHLE 102 - Light Brown (CPI mortars)

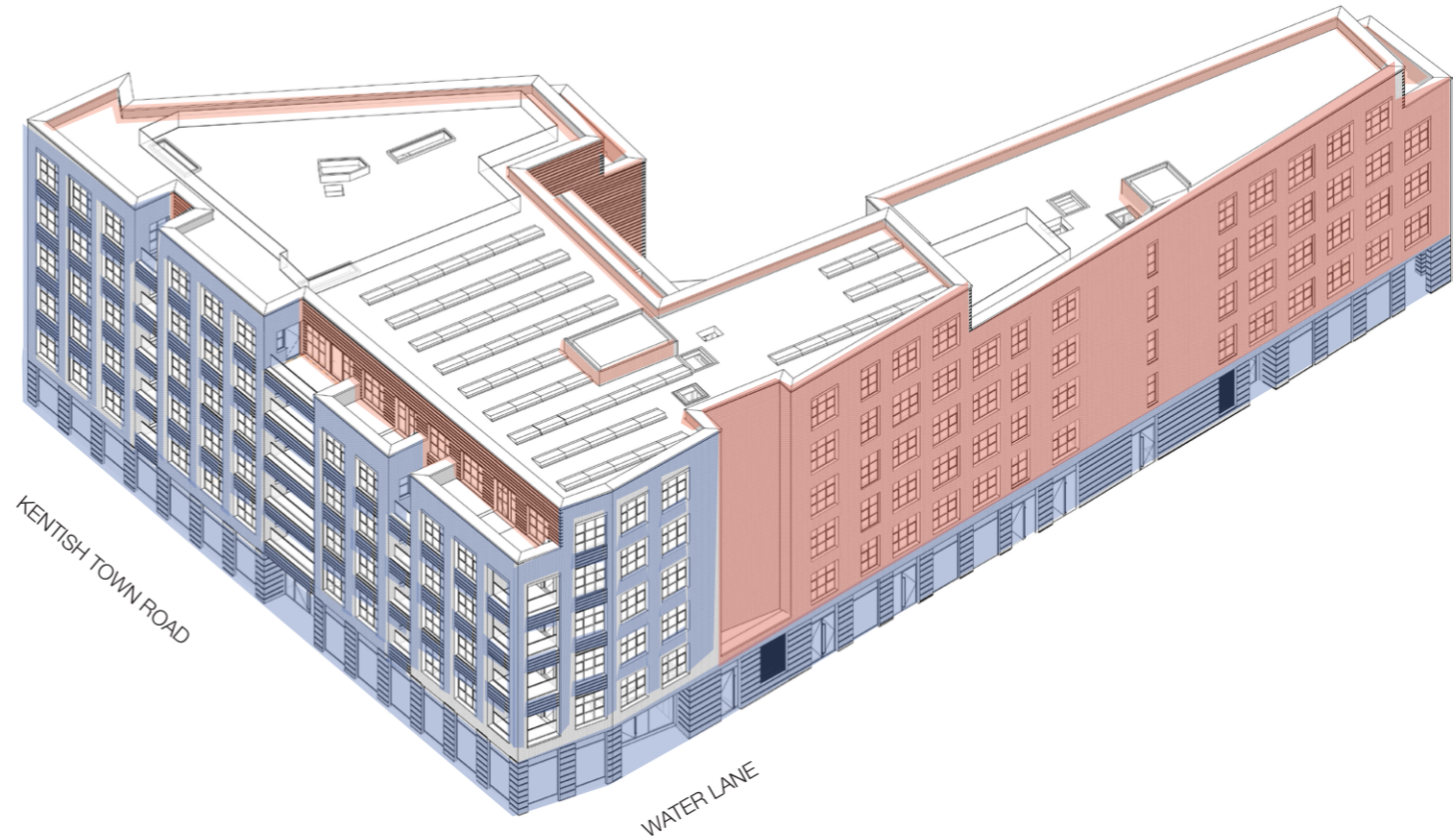
- JOINTS:** Flush Bed joints, Flush perpend on outer bricks, Recessed perpend on inner bricks
- JOINTS:** Recessed joint
- JOINTS:** Recessed joint

- MASTIC:** BUFF (ARBO Sealants)
- MASTIC:** BUFF (ARBO Sealants)
- MASTIC:** BUFF (ARBO Sealants)

CANALSIDE VIEW



ROADSIDE VIEW



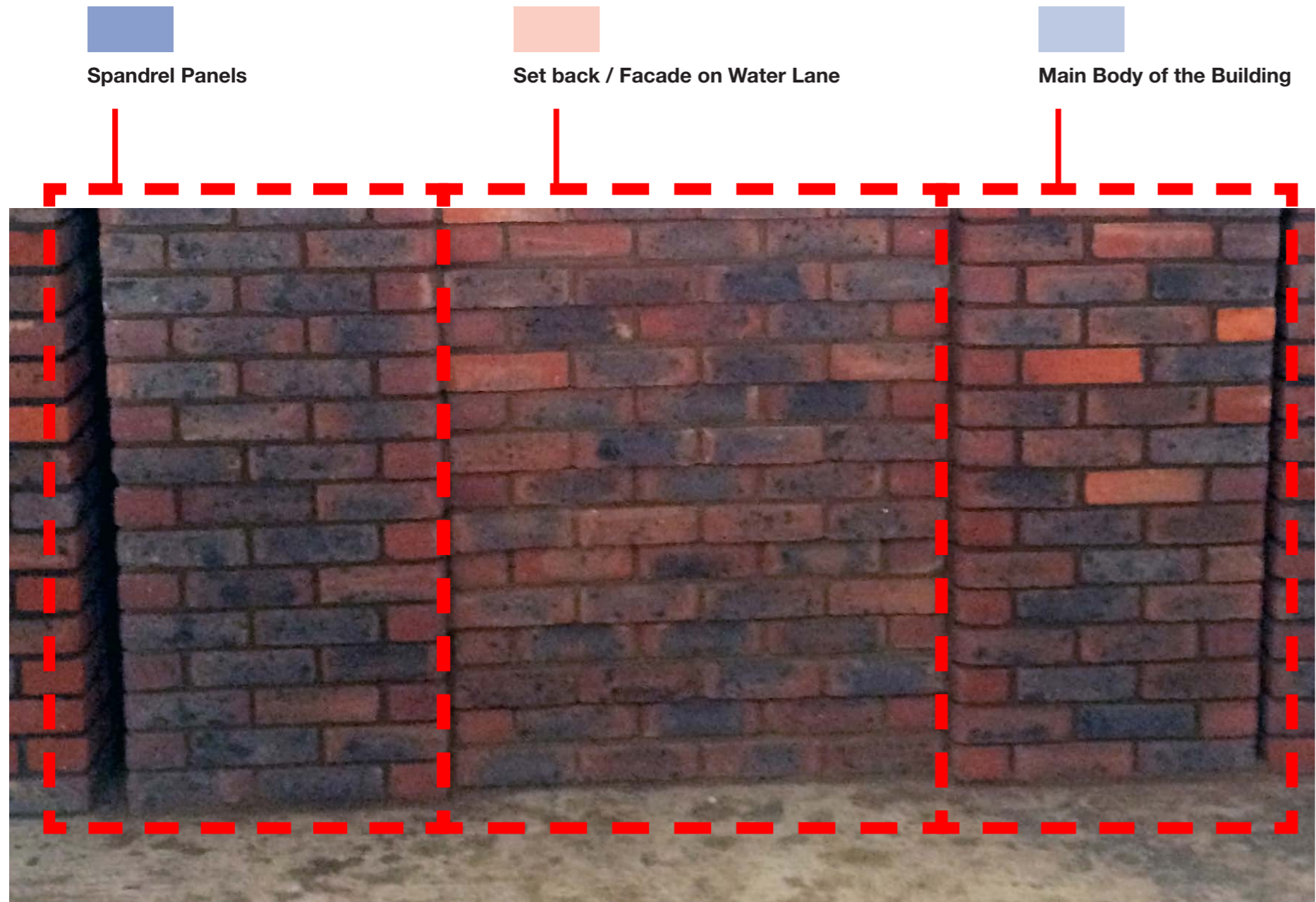
Building DE

- BRICK:** 100% Dark facings
- BRICK:** 50:50 Dark facings:First Quality Multi
- BRICK:** 100% First Quality Multi

- MORTAR:** M3 ANHLE 102 - Light Brown (CPI mortars)
- MORTAR:** M3 ANHLE 101 - Straw Brown (CPI mortars)
- MORTAR:** M3 ANHLE 102 - Light Brown (CPI mortars)

- JOINTS:** Flush Bed joints, Flush perpend on outer bricks, Recessed perpend on inner bricks
- JOINTS:** Recessed joint
- JOINTS:** Recessed joint

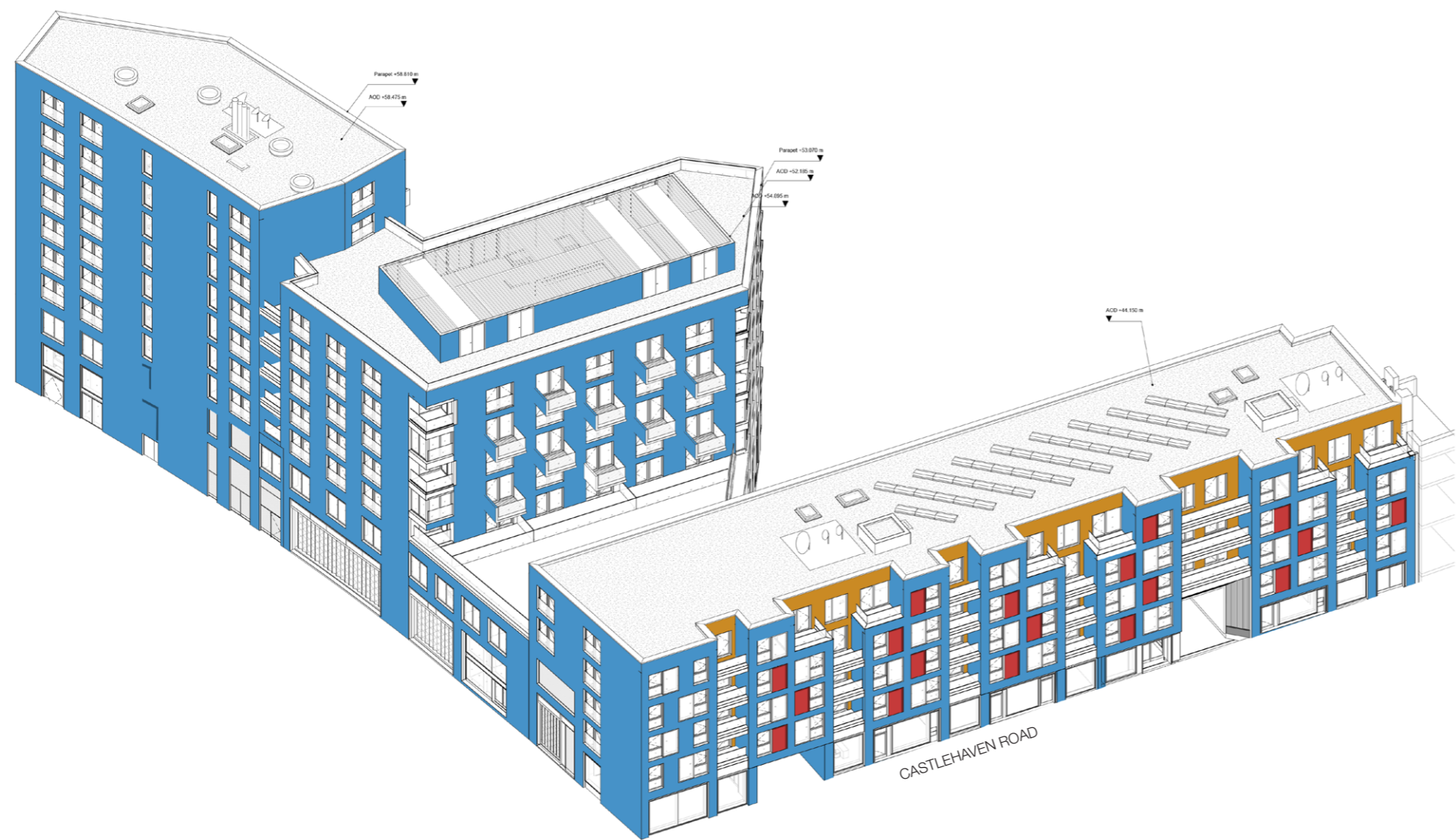
- MASTIC:** BUFF (ARBO Sealants)
- MASTIC:** BUFF (ARBO Sealants)
- MASTIC:** BUFF (ARBO Sealants)



Building C

<div></div> BRICK: 100% Freshfield lane -First Quality Multi	MORTAR: M3 ANHLE 180 - LIGHT BUFF (CPI mortars)	JOINTS: Recessed	MASTIC: BUFF (ARBO Sealants)
<div></div> BRICK: 2 IN - HAND Selected Darks from First Quality Multi 4 OUT - Freshfield lane First Quality Multi	MORTAR: M3 ANHLE 180 - LIGHT BUFF (CPI mortars)	JOINTS: Recessed	MASTIC: BUFF (ARBO Sealants)
<div></div> BRICK: 100% Freshfield lane -First Quality Multi	MORTAR: M3 ANHLE 180 - LIGHT BUFF (CPI mortars)	JOINTS: Recessed	MASTIC: BUFF (ARBO Sealants)

C1-C2 Northern 3d overview



Building C

BRICK: 100% Freshfield lane -First Quality Multi

BRICK: 2 IN - HAND Selected Darks from First Quality Multi
4 OUT - Freshfield lane First Quality Multi

BRICK: 100% Freshfield lane -First Quality Multi

MORTAR: M3 ANHLE 180 - LIGHT BUFF (CPI mortars)

MORTAR: M3 ANHLE 180 - LIGHT BUFF (CPI mortars)

MORTAR: M3 ANHLE 180 - LIGHT BUFF (CPI mortars)

JOINTS: Recessed

JOINTS: Recessed

JOINTS: Recessed

MASTIC: BUFF (ARBO Sealants)

MASTIC: BUFF (ARBO Sealants)

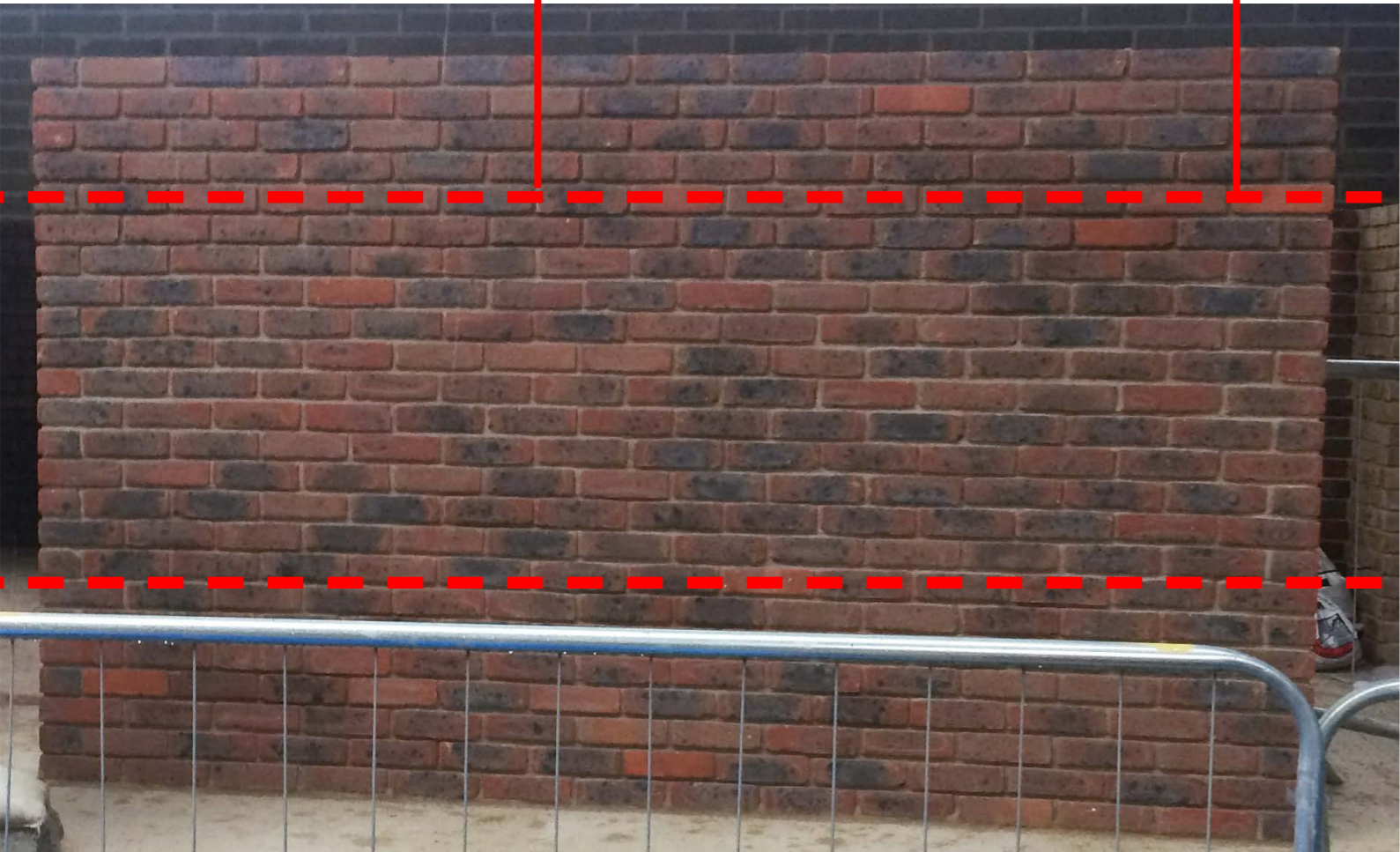
MASTIC: BUFF (ARBO Sealants)



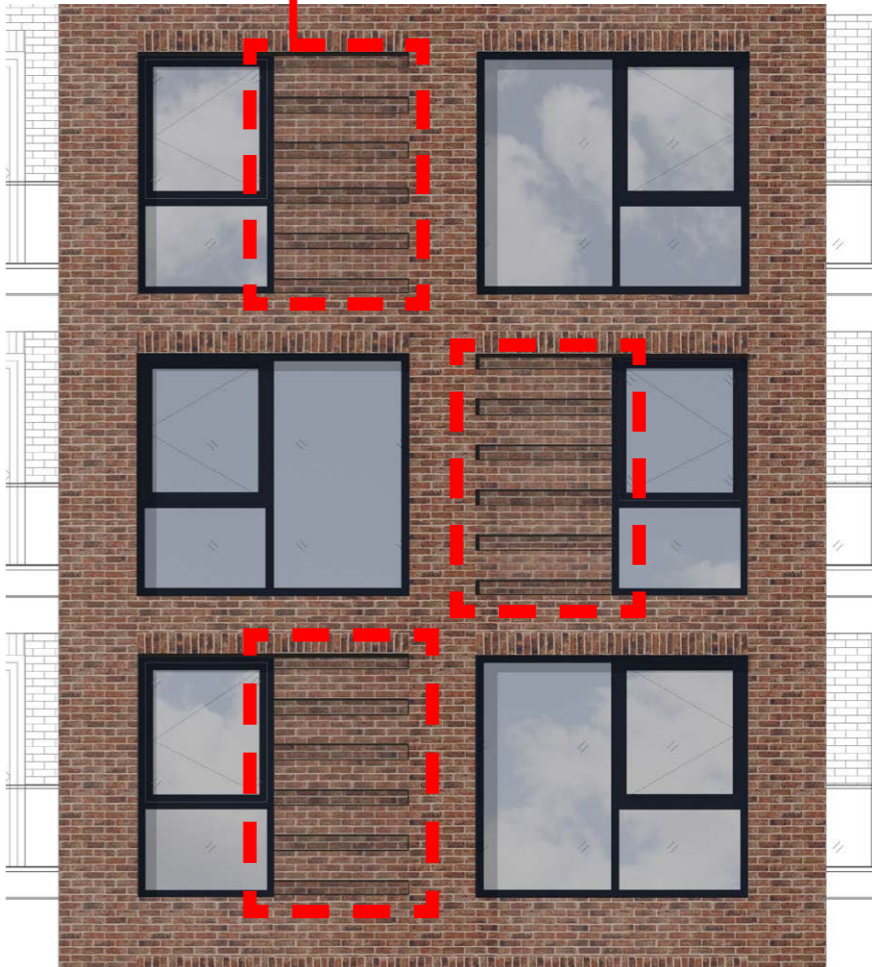
Setback at Castlehaven Road



Main Body of the Building



Recessed Panel at Castlehaven Road



Building X

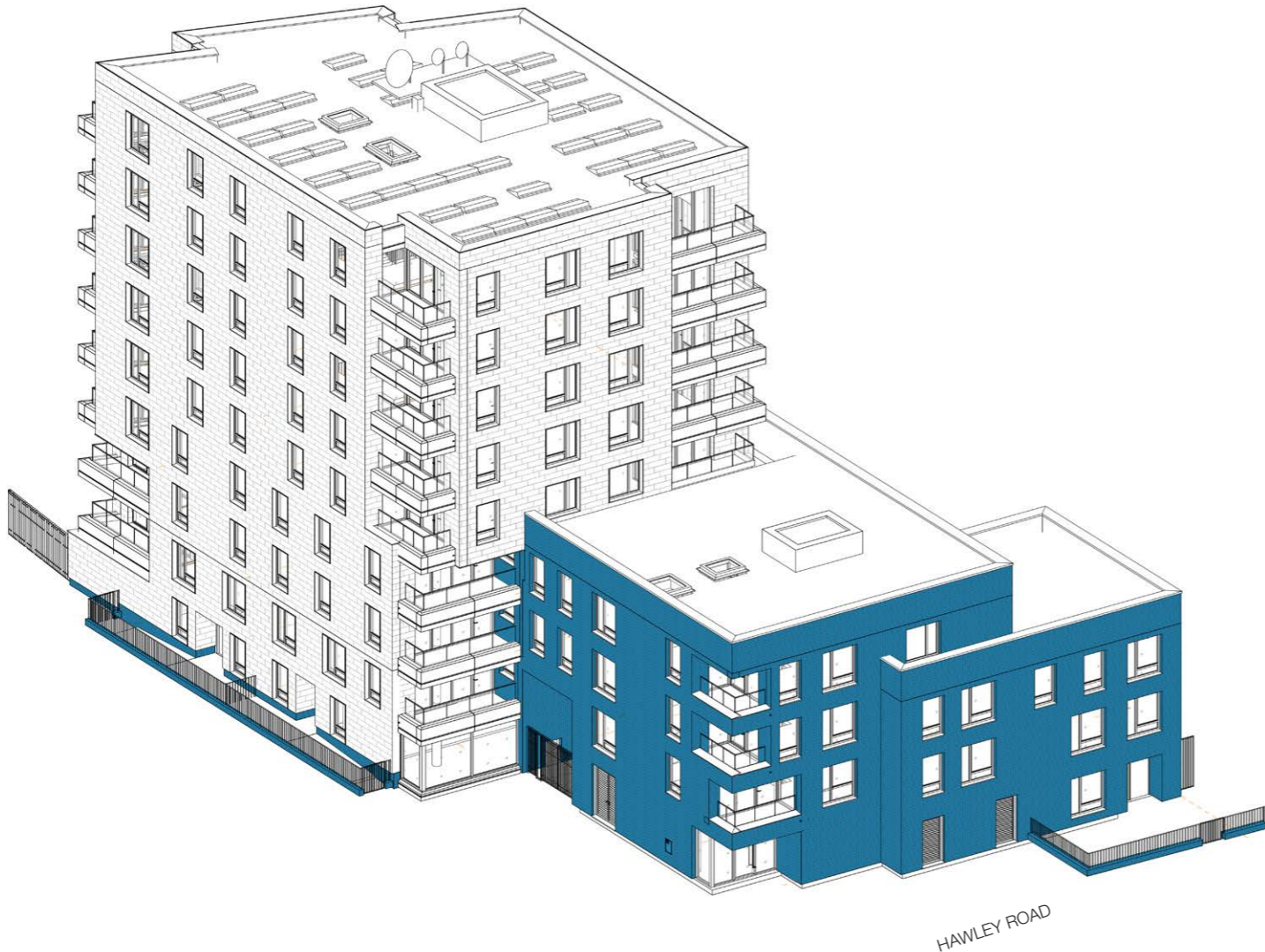
BRICK: 100% Freshfield lane -First Quality Multi

MORTAR: M3 ANHLE 102 - STRAW BROWN DARK
(CPI mortars)

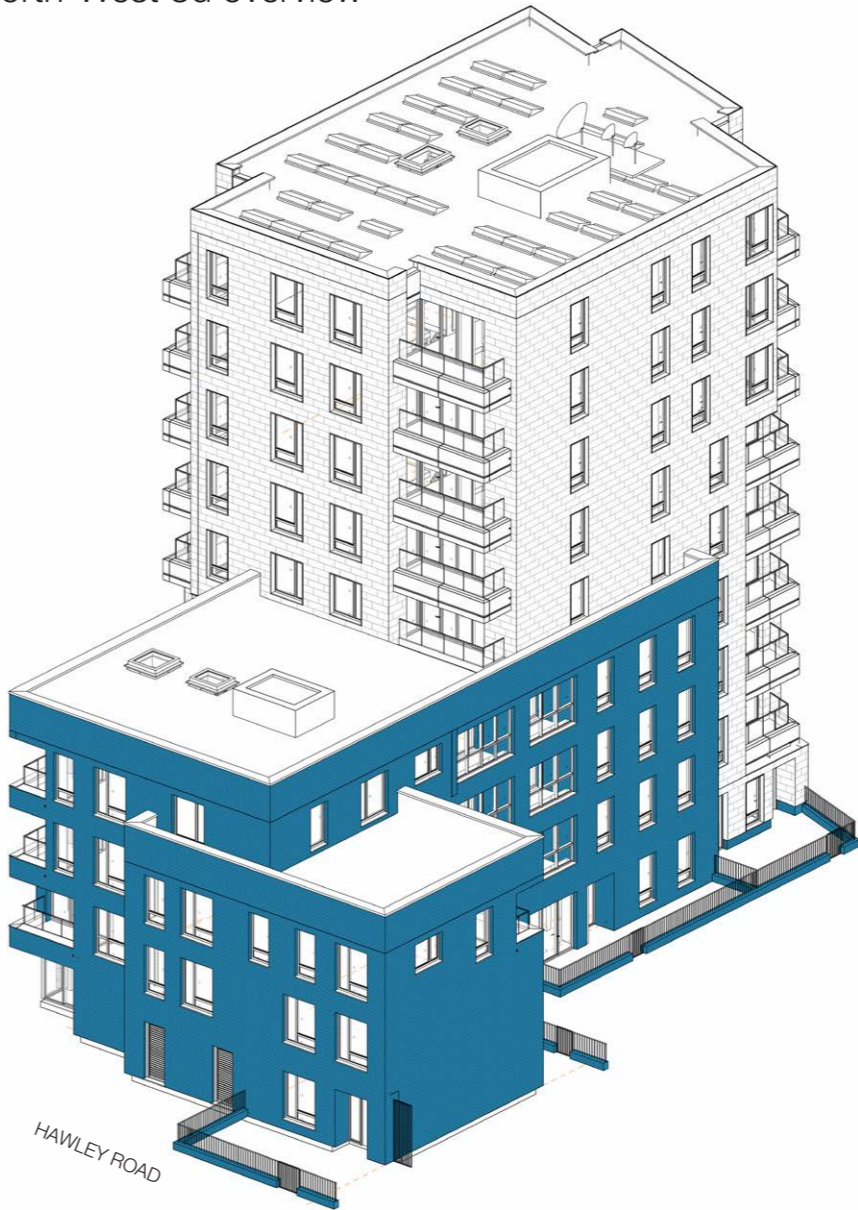
JOINTS: Recessed bed joints, flush perpend joints

MASTIC: BUFF (ARBO Sealants)

X -North-East 3d overview



X -North-West 3d overview



Building X

BRICK: 100% Freshfield lane -First Quality Multi

MORTAR: M3 ANHLE 102 - STRAW BROWN DARK
(CPI mortars)

JOINTS: Recessed bed joints, flush perpend joints

MASTIC: BUFF (ARBO Sealants)



Main body at building X