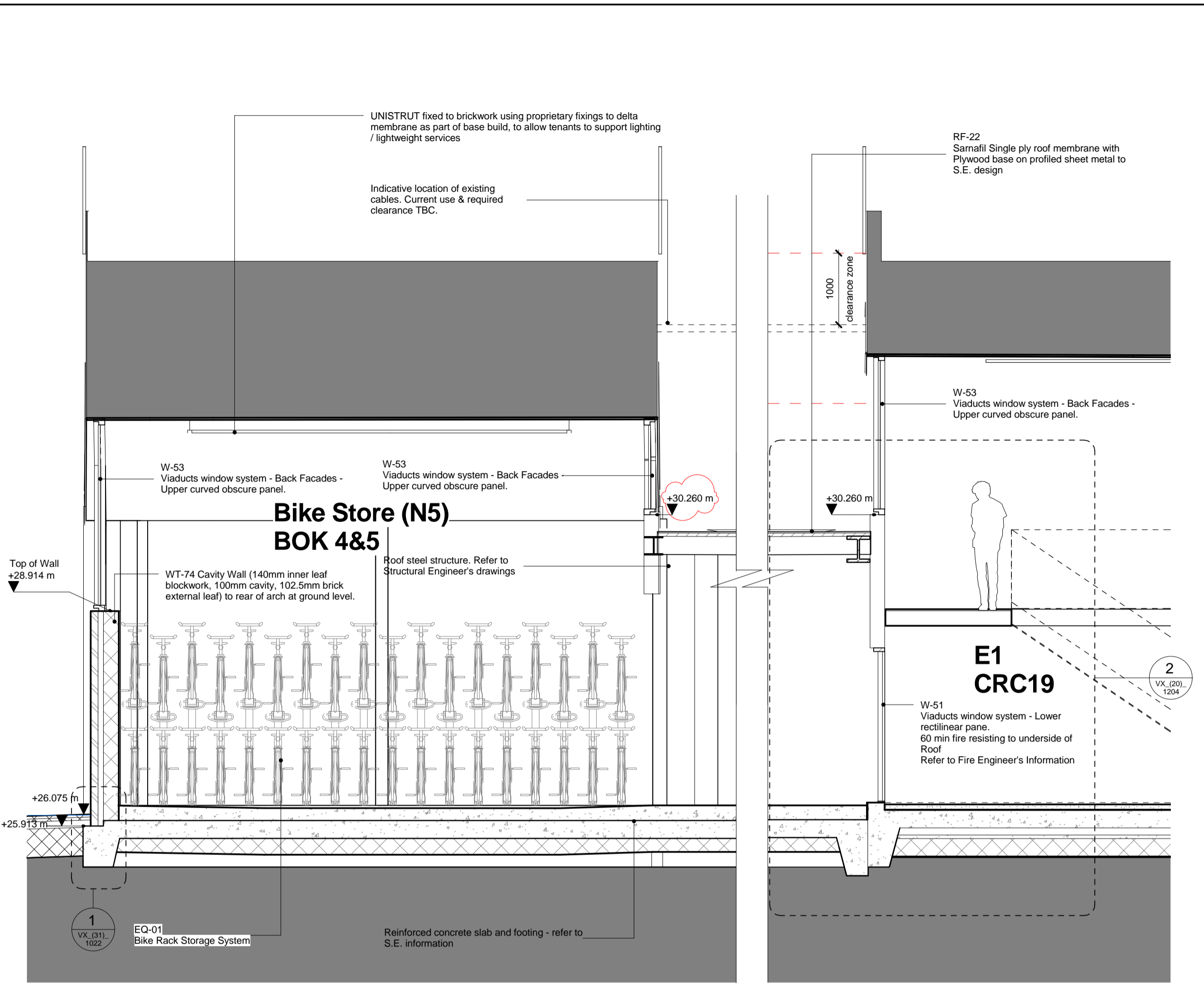
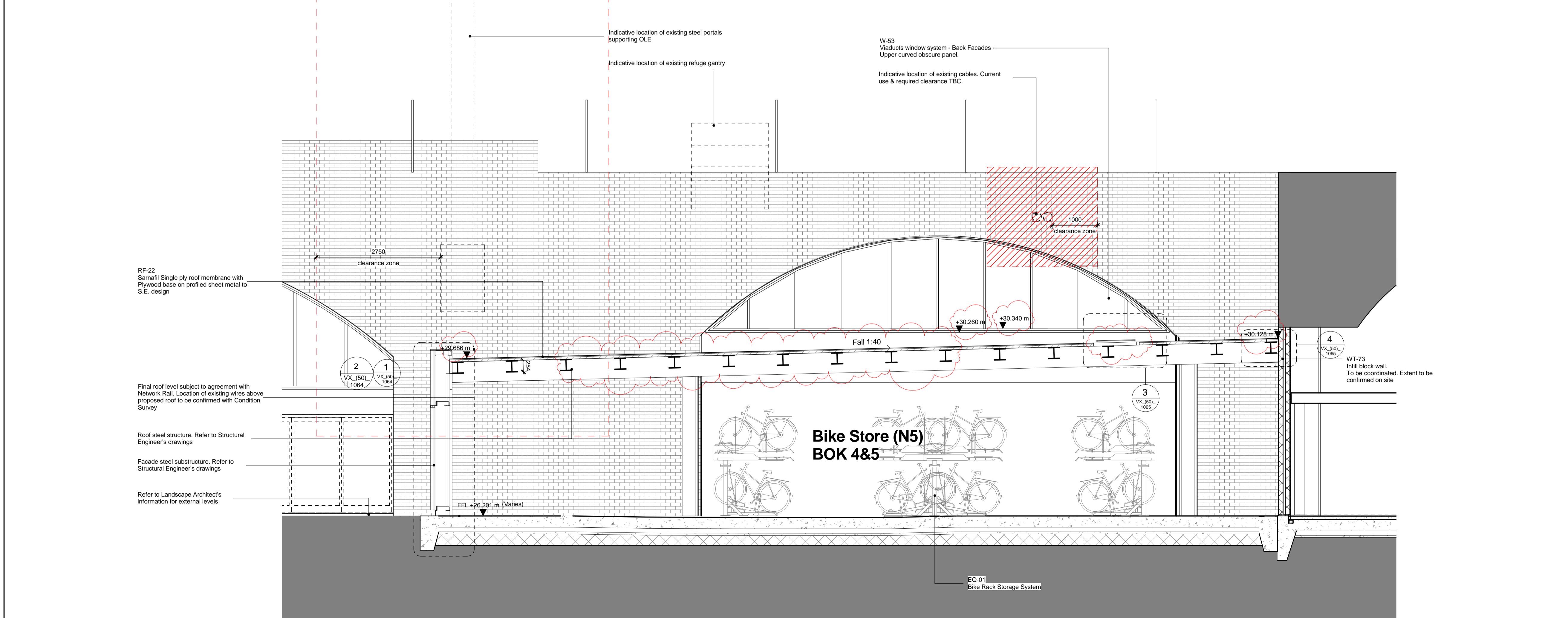


1 Bike Store Rear Elevation



2 Bike Store Cross Section through E1



3 Bike Store North Longitudinal Section

**KEY**

Refer to VX\_(31) series for further detailed information.  
 Refer to VX\_(31)\_1100 for Typical Setting Out Details.  
 Refer to VX\_(20) series for Services Setting Out.

For Fire Strategy, refer to Hoare Lea's Fire Engineers' Report and information. In addition refer to the (68) drawing series.  
 For Structure, refer to Structural Engineers' information.  
 For MEPH, refer to Mechanical and Electrical Engineers' information.  
 For Landscape details and levels, refer to Landscape Architects information.  
 Refer to Hawley School drawings for further information on the adjoining school.

All viaducts to be surveyed, repaired and cleaned out by the Main Contractor and Network Rail prior to construction.

Extent of existing structure and walls are based on the following Survey Drawings prepared by KND Survey LTD B0508\_AR\_GF (6 Dec 2006), E1111 A G (6 June 2011)

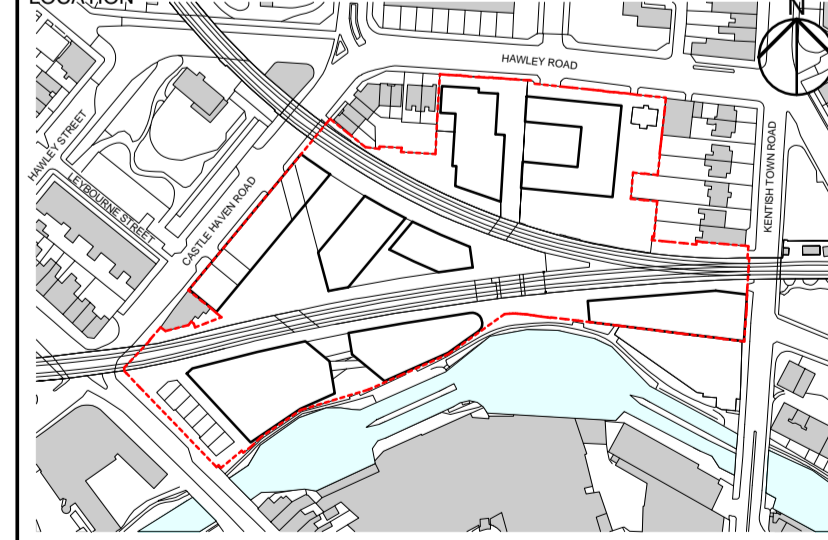
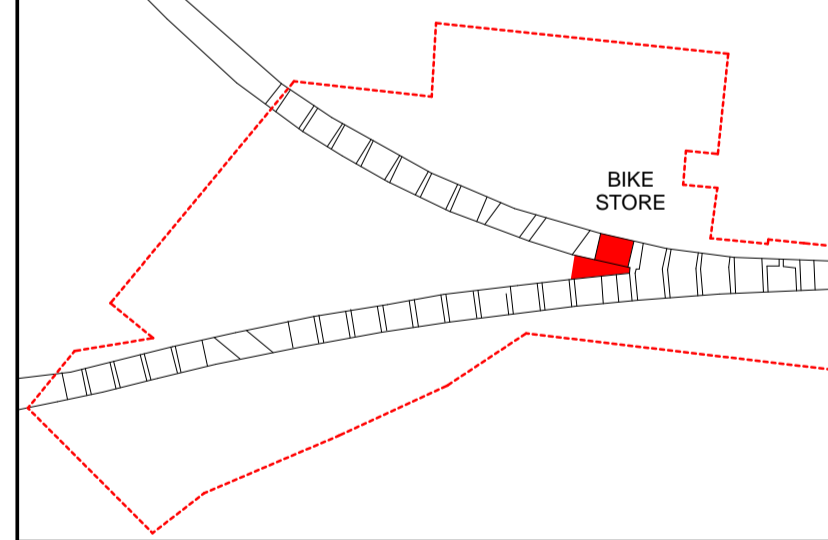
All dimensions to existing viaduct structures are indicative and are included for information only. Contractor to confirm on site prior to fabrication.

- Revision C02 Notes**
1. Roof lights omitted following client instruction.
  2. Roof vent panel included, to satisfy NG venting requirements.
  3. Safety signage provision added to satisfy A&M requirements.
  4. Parapet height reduced following amendments to A&M strategy.
  5. Dimensions and levels added / amended as bubbled.

REV	DATE	DESCRIPTION
C02	07/02/18	For Construction
C01	16/08/16	For Construction
F02	24/06/16	For Coordination
F01	08/06/16	For Coordination

CONSULTANTS	
CLIENT:	Stanley Sidings
CONTRACTOR:	Mace Group
STRUCTURAL ENGINEER:	Walsh Group
MECHANICAL ENGINEER:	AECOM
COST CONSULTANT:	Gardiner & Theobald
PROJECT MANAGER:	Gardiner & Theobald
ACOUSTIC CONSULTANT:	Arup
TRANSPORT CONSULTANT:	Arup
PLANNING CONSULTANT:	Gerald Eve
LANDSCAPE ARCHITECT:	Fabrik
CDM CO-ORDINATOR:	Gardiner & Theobald

- NOTE**
1. Do not scale from this drawing.
  2. All dimensions to be checked on site by the contractor and such dimensions to be his responsibility. Report all drawing errors, omissions and discrepancies to the architect.
  3. This document may be issued in an uncontrolled CAD format to enable others to use it as background information to make alterations and/or additions. In that instance the file will be accompanied by a PDF version. It is for those making such alterations and additions to ensure that they make use of current background information.
  4. AHMM Ltd accepts no liability for any such alterations or additions to the background information or arising out of changes to background information which occur prior to alterations of additions being made.
- REFER TO TECHNICAL REFERENCE SHEET FOR SPECIFICATION CLAUSES  
 DOCUMENT REFERENCE: 14045\_V\_TRS



**ALLFORD HALL MONAGHAN MORRIS**  
 ARCHITECTS Ltd  
 5-23 OLD STREET, LONDON, EC1V 9HL  
 TEL 020 7251 5261 FAX 020 7251 5123 WEB WWW.AHMM.CO.UK

job title  
**Camden Lock Village**

drawing title / location  
**Bike Store/ BOK Arch 5 Sections & Elevations - Sheet 2**

drawn by	checked	scale	status
KT	AH	1 : 50 @ A1	For Construction
project	drawing no.	revision	
14045	VX_(50)_ 1063	C02	