

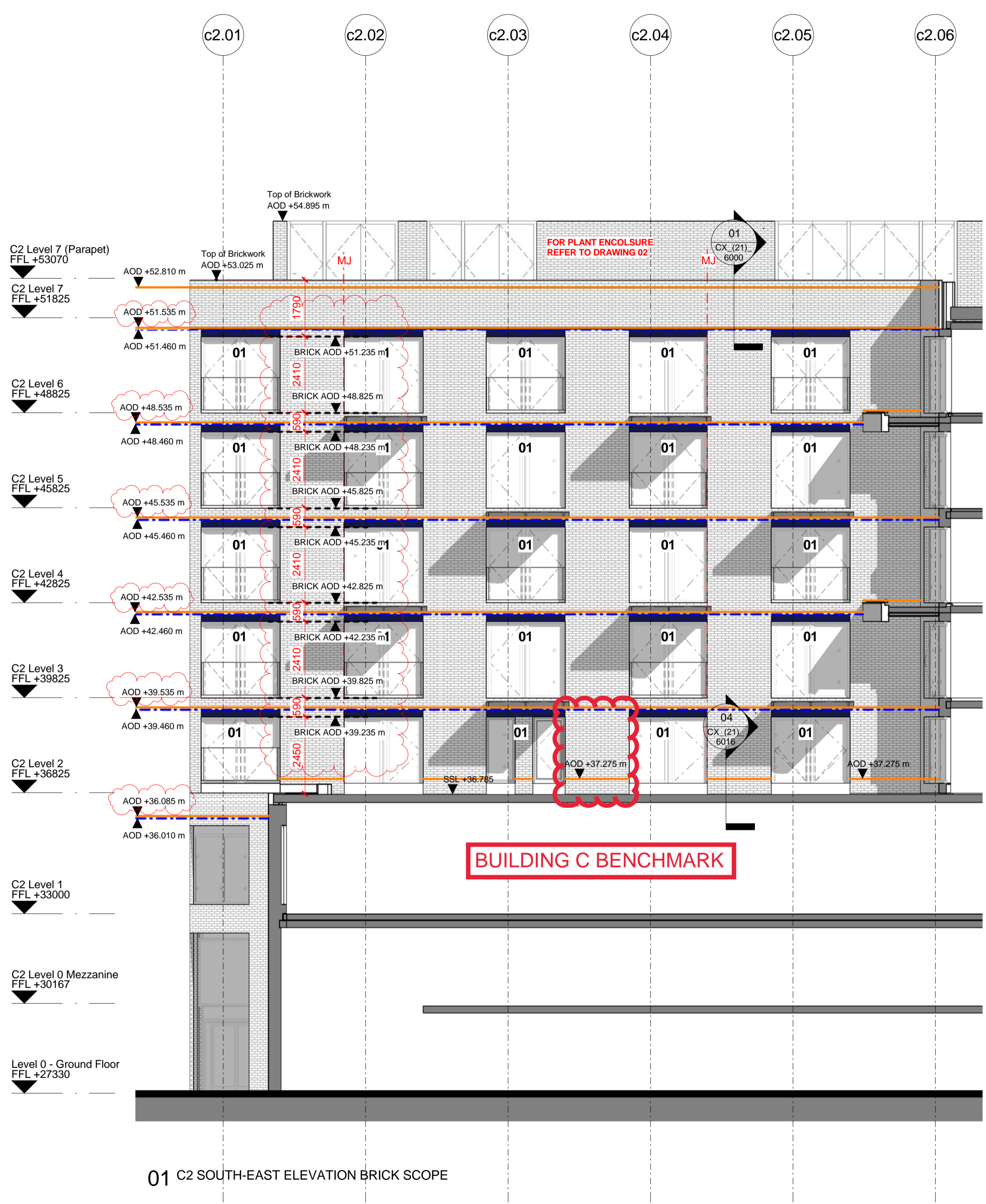
- 01 Brick head detail as CX_(21)_6013 03
- 02 Brick head detail as CX_(21)_6013 06
- 03 Brick head detail as CX_(21)_6002 03
- 04 Balcony Brick head detail as C2_(21)_6000 01& 04
- 05 Brick head detail as CX_(21)_6013 04
- 06 Brick lintel detail as CX_(21)_6010 02
- 07 Brick lintel detail as CX_(21)_6050 01 & 03
- 08 Brick soldier course detail as CX_(21)_6013 05
- 09 Brick soldier course detail as CX_(21)_6010 03
- 10 Brick soldier course detail as CX_(21)_6014 02
- 11 Brick soldier course detail as CX_(21)_6051 01

- 12 Brick soldier course detail as C1_(21)_6001 01
- 13 Brick soldier course detail as C1_(21)_6003 01
- 14 Brick soldier course detail as C1_(21)_6002 01
- 15 Brick soldier course detail as C2_(21)_6002 01
- 16 Brick soldier course detail as C2_(21)_6001 01
- 17 Brick soldier course detail as C2_(21)_6012 01
- 18 Brick soldier course detail as CX_(21)_6013 02
- 19 Brick soldier course detail as C2_(21)_6013 01
- 20 Brick soldier course detail as CX_(21)_6060
- 21 Brick soldier course detail as C1_(21)_6004 01

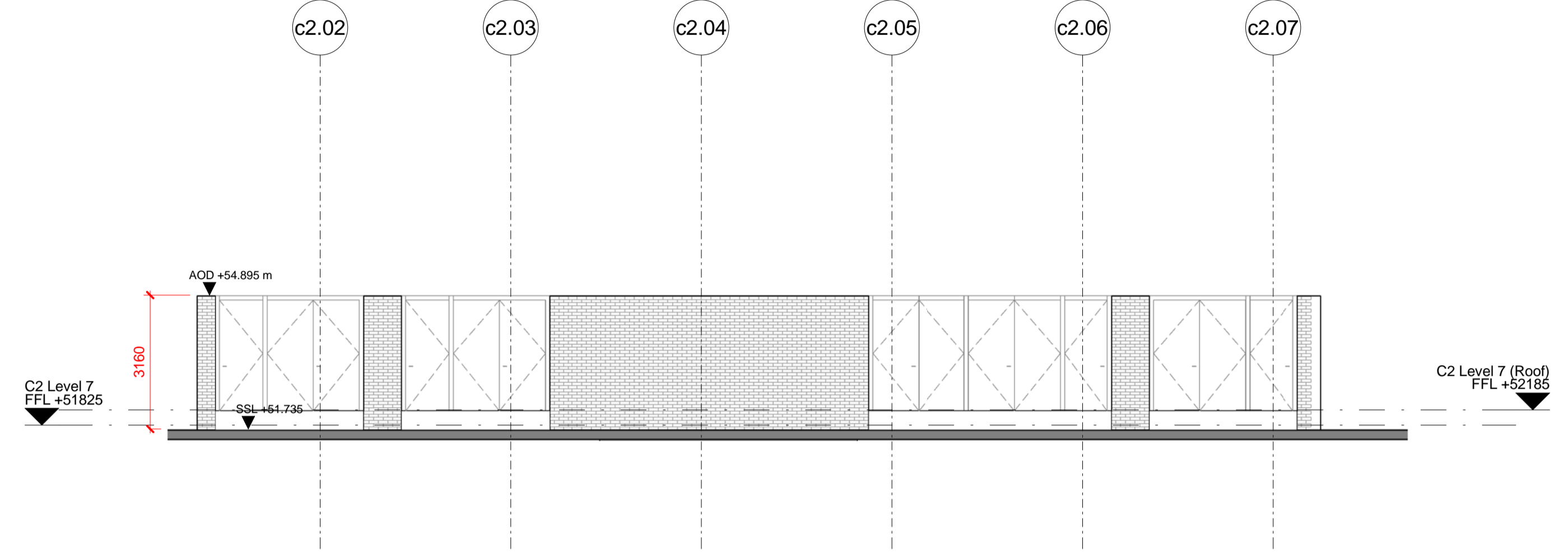
- Brickwork - First quality multi facings as F10/111
- Brickwork - Linfield yellow as F10/111
- Brickwork - TBC as F10/111

- Movement joint
- Brick support level
- Cavity tray and weep hole level

NOTE: HEAD RESTRAINT REQUIRED FOR DEFLECTION AT SOFFITS TO SLABS. REFER TO (21) SERIES FOR FURTHER DETAILS.
 THERMAL BLOCK SHOULD BE USED AT ALL SLAB TO BRICK JUNCTIONS INC. GROUND CONDITIONS. REFER TO CX_(21)_6015 AND 6016 AND (19) SERIES FOR DETAILS.



01 C2 SOUTH-EAST ELEVATION BRICK SCOPE

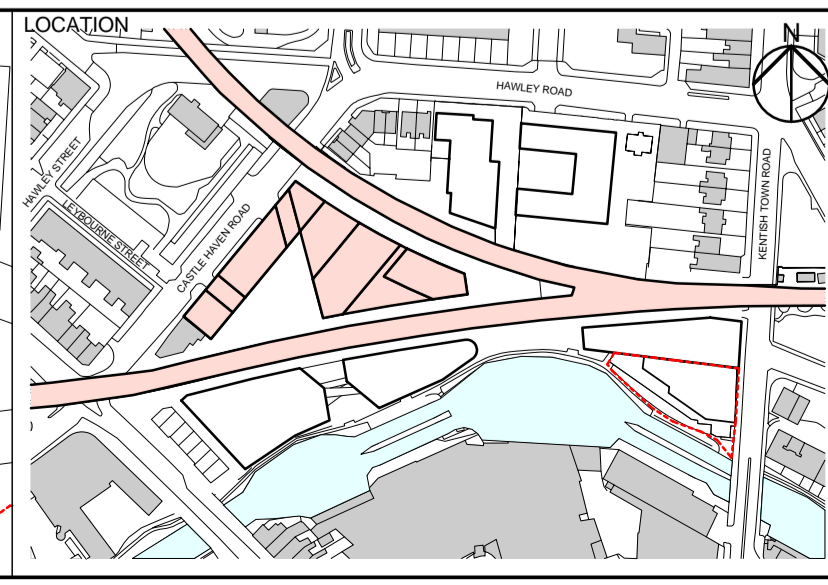
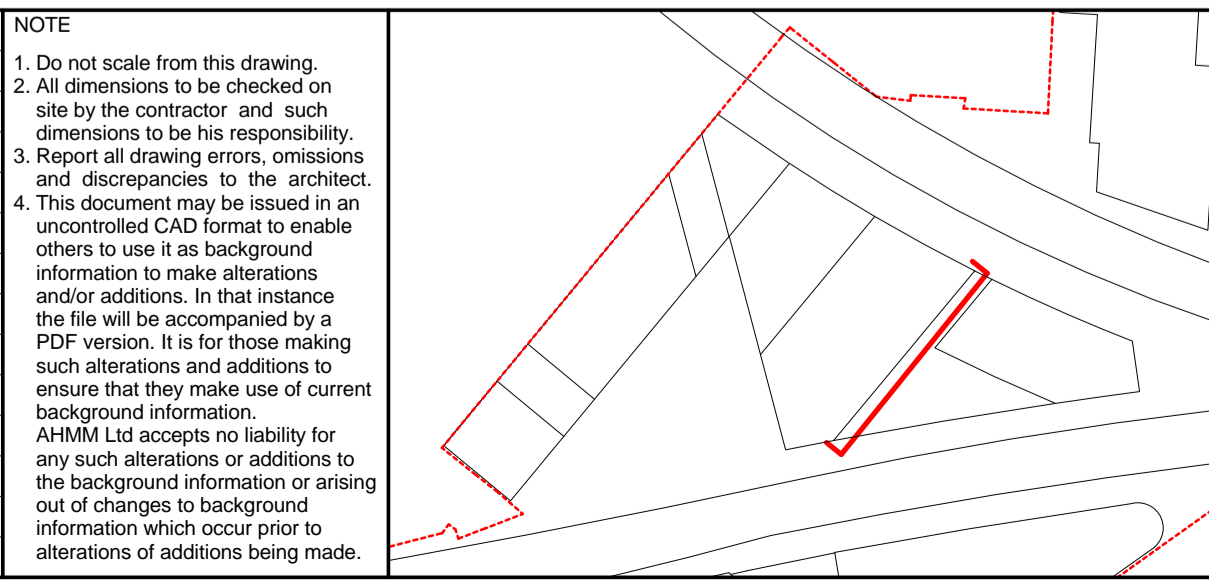


02 BUILDING C2 SOUTH EAST PLANT ENCLOSURE ELEVATION BRICK SCOPE

REV	DATE	DESCRIPTION
C01	23/09/16	ISSUED FOR CONSTRUCTION
C02	09/03/17	Brick movement joints amended to comments
C03	24/03/17	Cavity tray heights amended and AODs added

CONSULTANTS	CLIENT:
CONTRACTOR:	Stanley Sidings
STRUCTURAL ENGINEER:	Mace
MECHANICAL ENGINEER:	Walsh Group
COST CONSULTANT:	AECOM
PROJECT MANAGER:	Gardiner & Theobald
ACOUSTIC CONSULTANT:	Gardiner & Theobald
TRANSPORT CONSULTANT:	Hoare Lea
PLANNING CONSULTANT:	Anup
LANDSCAPE ARCHITECT:	Gerald Eve
CDM CO-ORDINATOR:	Fabrik
PRINCIPAL DESIGNER:	MSA Safety
	Gardiner & Theobald

NOTE
1. Do not scale from this drawing.
2. All dimensions to be checked on site by the contractor and such dimensions to be his responsibility.
3. Report all drawing errors, omissions and discrepancies to the architect.
4. This document may be issued in an uncontrolled CAD format to enable others to use it as background information to make alterations and/or additions. In that instance the file will be accompanied by a PDF version. It is for those making such alterations and additions to ensure that they make use of current background information.
AHMM Ltd accepts no liability for any such alterations or additions to the background information or arising out of changes to background information which occur prior to alterations of additions being made.



ALFORD HALL MONAGHAN MORRIS
 ARCHITECTS Ltd
 5-23 OLD STREET, LONDON, EC1V 9HL
 TEL 020 7251 5261 FAX 020 7251 5123 WEB WWW.AHMM.CO.UK

job title
CAMDEN LOCK VILLAGE

drawing title / location
BRICKWORK - C2 SOUTH EAST ELEVATION (100)

drawn by	checked	scale	status
KP	KH	1 : 100 @ A1	CONSTRUCTION
project	zone	CI/SIB drawing no.	revision
14045	C2_(23)_ 2050		C03