

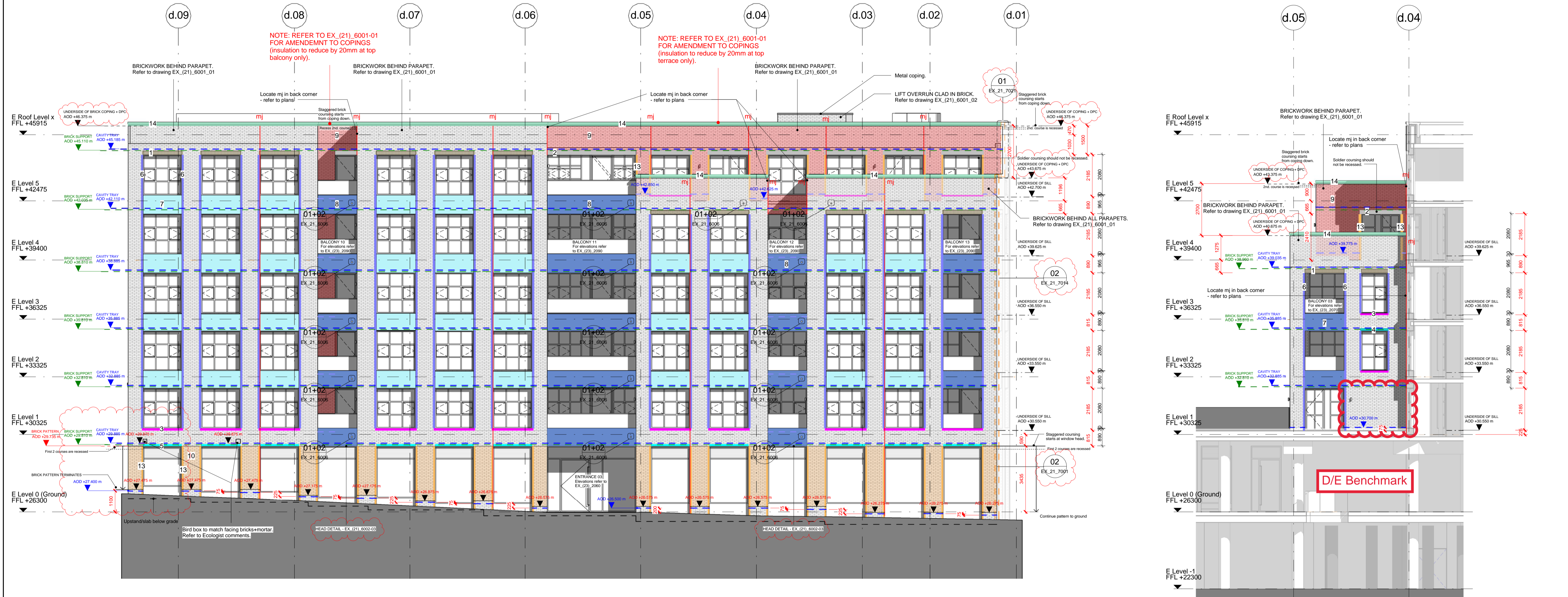
NOTES:

. ALL CORNER JUNCTIONS WITH BULLNOSE BRICKS SHOULD BE FORMED FROM BULLNOSE CORNER SPECIALS BN.7/8/9.

. REFER TO DETAILS (21) SERIES FOR REFERENCE OF UNDERSIDE TO COPING AND SILLS.

. REFER TO EX_(21)_6000 FOR BRICK TYPES UNLESS OTHERWISE STATED ON THIS DRAWING.

GRIDLINES FOR REFERENCE ONLY



01 EAST ELEVATION - Kentish Town rd

02 EAST ELEVATION - Courtyard

PREVIOUS REVISIONS:
T01: 01/07/2016 STAGE F - BRICK SCOPE ONLY
T02: 06/07/2016 STAGE F ISSUE - TYPICAL DETAILS ISSUED FOR BRICK PACK

SETTING OUT:

- MJ MOVEMENT JOINT IN BRICKWORK
- MOVEMENT JOINTS IN PRE-CAST COPINGS TO BE EVERY 2.465m - TBC WITH S/c
- DPC / CAVITY TRAY - TBC with confirmation of brick support connections
- BRICK SUPPORT LEVEL AND HORIZONTAL MOVEMENT JOINT
- CUT + BOND BRICK TO NON-RIGHT ANGLE CORNERS
- MINOR ANGLE CHANGES (1 DEGREE) - PICK UP THROUGH STANDARD COURSING

READ IN CONJUNCTION WITH FIRE AND ACOUSTIC RATINGS DRAWINGS (48 AND 68 SERIES)

THERMAL BLOCK SHOULD BE USED AT ALL SLAB - BRICK JUNCTIONS INC. TO CAPPING BEAM AT GROUND FLOOR. REFER TO (21) AND (19) SERIES FOR DETAILS.

SCOPE: TYPICAL BRICK DETAILS

1	BULLNOSE SOLDIER COURSE	- EX_(21)_6000-01 + EX_(21)_6005-06 at balconies
2	STANDARD SOLDIER COURSE	- EX_(21)_6002-02
3	BULLNOSE SILL	- EX_(21)_6007-01/EX_(21)_6010-01 @ stair core
		- EX_(21)_6009-02
		- EX_(21)_6005-02
4	BULLNOSE HEAD	- EX_(21)_6011-01 / EX_(21)_6010-02 @ stair core
5	TYPICAL HEAD	- EX_(21)_6007-01
6	BULLNOSE JAMB	- EX_(21)_6002-04 / EX_(21)_6010-01 @ stair core
7	SPANDREL PANEL	(Brick type A) - EX_(21)_6000-02 + EX_(21)_6002-03 (detail)
8	BALCONY SPANDREL	(Brick type A) - EX_(21)_6000-02 + EX_(21)_6005-01 (detail)
9	SINGLE STAGGERED	(Brick type B) - EX_(21)_6000-03
10	DOUBLE STAGGERED	(Brick type C) - EX_(21)_6000-04
11	SPANDREL PANEL	(Brick type B) - EX_(21)_6000-05
12	STAGGERED HEAD + SILL	- EX_(21)_6011-03 (various details)
		- EX_(21)_6005-03 + 4th H/S (applies to balconies)
13	STAGGERED JAMB	- EX_(21)_6011-02
14	BRICK COPING	- EX_(21)_6001-01

REV DATE DESCRIPTION

C01	19/09/2016	FOR CONSTRUCTION
C02	19/10/2016	CONSTRUCTION ISSUE
C03	20/10/2016	CONSTRUCTION ISSUE
C04	13/12/2016	CONSTRUCTION - Roof level amended. Bird and bat boxes updated.
C05	10/03/2017	CONSTRUCTION - Movement joints revised
C06	23/03/2017	CONSTRUCTION - Various updates
C07	09/06/2017	CONSTRUCTION ISSUE - Revisions based on S/c construction info.
C08	24/08/2017	CONSTRUCTION ISSUE - Major revisions bubbled

C08 REVISION NOTES:

- Fire barrier locations updated following Consultant meeting
- Brick nib removal on southwest corner as instructed
- Detail references to corner cut + bonded bricks added as requested
- Detail references to head + base details amended for clarity (scope elevations only)
- Parapet level change due to detailed setting out development (scope elevations only)
- GF window + DPC setting out amended as highlighted

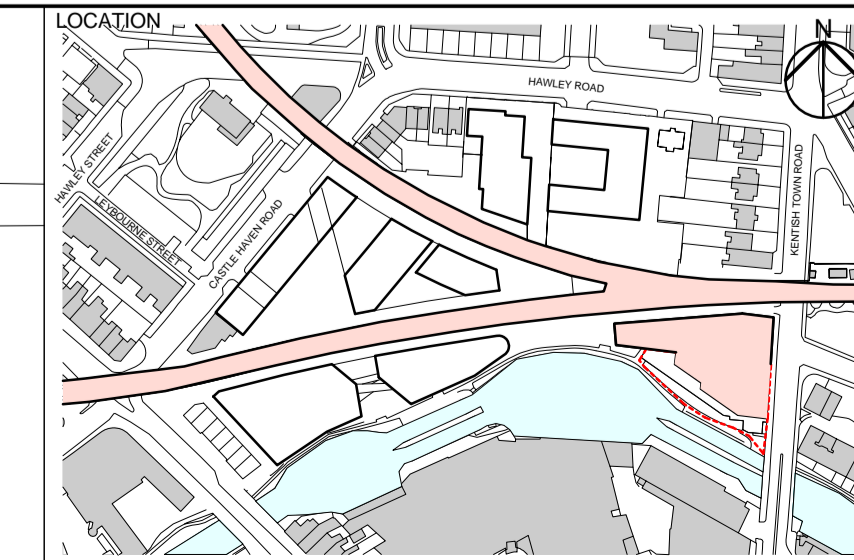
CONSULTANTS

CLIENT:	Stanley Sidings
CONTRACTOR:	Mace
STRUCTURAL ENGINEER:	Walsh Group
COST CONSULTANT:	Gardiner & Theobald
MEP ENGINEER:	AECOM
PROJECT MANAGER:	Gardiner & Theobald
ACOUSTIC CONSULTANT:	Hoare Lea
TRANSPORT CONSULTANT:	Arup
PLANNING CONSULTANT:	Gerald Eve
LANDSCAPE ARCHITECT:	Fabrik
CDM CO-ORDINATOR:	MSA Safety
PRINCIPAL DESIGNER:	Gardiner & Theobald

NOTE

- Do not scale from this drawing.
- All dimensions to be checked on site by the contractor and such dimensions to be his responsibility.
- Report all drawing errors, omissions and discrepancies to the architect.
- This document may be issued in an uncontrolled CAD format to enable others to use it as background information to make alterations and/or additions. In that instance the file will be accompanied by a PDF version. It is for those making such alterations and additions to ensure that they make use of current background information.

AHMM Ltd accepts no liability for any such alterations or additions to the background information or arising out of changes to background information which occur prior to alterations of additions being made.



ALUFORD HALL MONAGHAN MORRIS
ARCHITECTS Ltd
5-23 OLD STREET, LONDON, EC1Y 9HL
TEL 020 7251 5261 FAX 020 7251 5123 WEB WWW.AHMM.CO.UK

job title
CAMDEN LOCK VILLAGE
drawing title / location
EAST ELEVATION - BRICK SETTING OUT

drawn by	checked	scale	status
JR	KH	1:100 @ A1	CONSTRUCTION
project	zone	C/SIB drawing no.	revision
14045	EX_(23)_2040		C08