



REVEAL PANEL

System Technology for Facades



For up-to-date information, technical reports, advanced technical information, parts lists, standard details or specifications please visit our website www.rheinzink.com

Exclusion of Liability

RHEINZINK GmbH & Co. KG takes account of state-of-the-art technology, product development and research at all times in its technical opinions. Such comments or recommendations are based on installation as is possible in standard cases in a European climate, specifically the indoor climate prevailing in Europe. We are of course unable to cater for all conceivable circumstances, which may call for restrictions and/or further measures in individual cases. This means that on no account are such comments provided by RHEINZINK GmbH & Co. KG any substitute for the advice or planning offered by an architect/consultant or contractor in charge of a specific building project under consideration of the specific circumstances prevailing on site.

Usage of documentation made available by RHEINZINK GmbH & Co. KG constitutes a service for which no liability can be assumed for losses or further claims of whatever nature. This does not affect liability arising in the case of intent, gross negligence or injury to life, limb or human health. Claims to compensation governed by the German Product Liability Act shall be likewise by unaffected thereby.

8th edition

© 2015 RHEINZINK GmbH & Co. KG

All rights reserved. No part of this book may be reproduced in any form without written permission of RHEINZINK GmbH & Co. KG.

Foreword

This document describes the use of RHEINZINK-Reveal Panels. Although it forms the basis for proper planning and classical application solutions, it is no more than a guide for users. The detailed drawings included here describe solutions which are feasible at a practical level.

We should like to explicitly point out that in actual practice it may not be possible to create the type of cladding illustrated in this document – or not to their full extent. In this context every situation should be examined in detail by the planner in charge. It is necessary here to take account of the system-specific effects on the property and local/climatic conditions as well as the requirements in terms of building physics. Compliance with the application techniques and specifications described here does not release users from any responsibility in this regard.

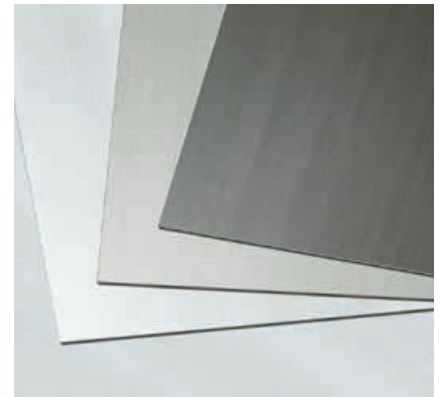
This document is based on our practical experience and represents the latest findings from research and development, recognised standards and state-of-the-art technology. We reserve the right to make changes at any time in the course of further development.

If you have any queries or suggestions, please contact your customer advisor or get in touch with your local RHEINZINK sales office. All contact data can be found on our homepage www.rheinzink.com/contact

For an overview of our sales offices see page 44 of this document.

Datteln, October 2015

The RHEINZINK Product Lines	6	1.6	General Processing Principles	11	2.	PROFILE GROUPS	
1. MATERIAL RHEINZINK TITANIUM ZINC		1.6.1	Marking	11		REVEAL PANEL	Page
		1.6.2	Forming/Radii of Curvature	11	2	RHEINZINK Profile Group	
		1.6.3	Length Change caused by Temperature	11		Reveal Panel SF 25	13
1.1 Alloy and Quality	8					Load Tables	13
1.2 Marking	8	1.7	Storage and Transportation	11	2.1	Profile Geometry	14
1.3 Material Properties	8	1.8	Structural Physics	11	2.1.1	Reveal Panel, vertical Installation	15
1.4 Patina Formation	9	1.9	Windproof building Envelopes	11	2.2	Joint Formation	16
1.4.1 RHEINZINK-prePATINA bright rolled	9				2.2.1	Vertical Panels	16
1.4.2 RHEINZINK-prePATINA blue-grey and graphite-grey	9	1.10	Weather Protection	12	2.3	Accommodating thermal Expansion of Facade Cladding	17
1.4.3 Information about Processing	9	1.11	Moisture	12	2.4	Substructure	18
1.4.4 Surface Uniformity	9	1.12	Thermal Economy	12	2.5	Fasteners	20
1.4.5 Protection during Transportation and Installation	10	1.12.1	Thermal Insulation	12	2.5.1	EJOT® Drilling Screws	20
1.4.6 Information on Wave Formation	10	1.12.2	Summer thermal Insulation	12	2.5.2	EJOT® Blind Rivet with large Collar	20
		1.12.3	Thermal Bridges	12	2.5.3	EJOT® Blind Rivet	20
1.5 Response to external Influences	10	1.13	Fire Protection	12	2.6	Installation and building Tolerances	21
1.5.1 Influence of other Metals placed on Top	10	1.14	Rear-ventilation	12			
1.5.2 Influence of other Building Materials placed on Top	10	1.14.1	Air intake and exhaust Openings	12	2.7	Detail Concept	22
1.5.3 Influence of other Substances incl. Mortar	10	1.15	Soundproofing	12	2.8	Details	23
1.5.4 Effect of Oil Heating	10				2.8.1	General Instructions	23
1.5.5 Base and Splash Water Areas, Rock Salt	10				2.8.2	Pictograph	23
					2.9	Design Grid	24
					2.10	Reveal Panel Design, vertical Application	26
						Contact	44
						Reference Projects	45
						Illustrations	48



ONE BRAND - FOUR PRODUCT LINES

The perfect solution for every requirement

To give you more design freedom, we offer our material in four different product lines and in numerous finishes. You get the perfect solution for every requirement with the trusted RHEINZINK quality. All products meet the high standards of EN 988 and the QUALITY ZINC criteria of TÜV Rheinland. The high level of manufacture is guaranteed by constant inspections and extensive laboratory tests. We have summarised the characteristic features of our four product lines on this double page. On request, we will gladly send you samples of materials.

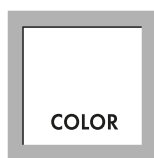
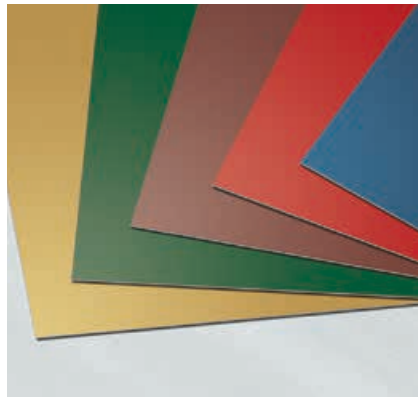
RHEINZINK-PATINA LINE

Living Material –
in three natural Surfaces

The PATINA LINE is the classic version of the RHEINZINK material. No other material is as fascinating as RHEINZINK in its original form. From the outside it is timelessly elegant, it is neither coated nor phosphatised, and is natural through and through. All surface variants in the PATINA LINE are ecologically exemplary, absolutely maintenance-free and set standards with a lifespan of several generations. They become increasingly more charismatic over the course of time and, through the formation of a real patina, develop their very own surface character. They do not age. They mature. What others are only just beginning to discover as innovation, RHEINZINK has already been implementing for almost 50 years.

Surface qualities:

RHEINZINK-prePATINA® bright rolled
RHEINZINK-prePATINA® blue-grey
RHEINZINK-prePATINA® graphite-grey



RHEINZINK-PROTECT LINE

Pure and durable – in two Versions

The PROTECT LINE is RHEINZINK-prePATINA blue-grey and graphite-grey with a transparent coating. Protected externally against ageing, internally completely natural. Constantly reliable, flexible, mouldable and durable. Both surface qualities of the PROTECT LINE consist totally of RHEINZINK. Developed for economic cladding of roof and facades the product line convinces with its permanent look of colour and texture and is therefore especially suited for buildings in extreme climates, or for the finish on specific application details such as soffit cladding. The alloy made of high-quality zinc with 99.995 % purity has identical material properties as RHEINZINK-prePATINA.

Surface qualities:

- RHEINZINK-PROTECT® blue-grey
- RHEINZINK-PROTECT® graphite-grey

RHEINZINK-COLOR LINE

Unlimited Design Options – in a Variety of Colours

This line is the coloured version of our material trusted world wide and used for roof coverings and facade cladding. A durable coating allows a wide range of colour options and offers architects, planners, craftsmen and builders great design possibilities.

Surface qualities:

- RHEINZINK-COLOR® pearl-gold
- RHEINZINK-COLOR® moss green
- RHEINZINK-COLOR® nut-brown
- RHEINZINK-COLOR® blue
- RHEINZINK-COLOR® tile-red

RHEINZINK-INTERIEUR LINE

Highlights Room Accents – in blue-grey and graphite-grey

The INTERIEUR LINE was developed for use in interior rooms and offers a multitude of interior architectural possibilities. A transparent coating applied in the factory on the visible surface protects the visual aesthetics permanently from usage-related influences.

Surface qualities:

- RHEINZINK-INTERIEUR® blue-grey
- RHEINZINK-INTERIEUR® graphite-grey

MATERIAL

**1. Material RHEINZINK
Titanium Zinc**

1.1 Alloy and Quality

RHEINZINK is titanium zinc according to DIN EN 988. The RHEINZINK alloy consists of electrolytically refined zinc according to DIN EN 1179 with a purity grade of 99.995% and precisely determined proportions of copper and titanium.

All RHEINZINK products are certified according to DIN EN ISO 9001:2008 and are subject to a voluntary inspection by TÜV Rheinland according to the strict QUALITY ZINC criteria catalogue (please request free of charge).

Ecological Relevance

RHEINZINK is a natural, 100% recyclable material that has always complied fully with today's strict ecological requirements. The latest production facilities, sophisticated logistics and favourable processing properties are available. Environmentally-conscious action is documented through the introduction of the environmental management system ISO 14001:2004. It is checked and certified according to TÜV Rheinland. We also document responsible action in regard to the environment through the introduction of an energy management system according to ISO 50001:2011. It is our intention to save as much energy as possible, to save resources and to keep the environmental impact of our products as low as possible.

Aspects of ecological Assessment

According to the holistic assessment from the Institute for Construction and Environment e.V., RHEINZINK is declared an environmentally friendly construction product according to ISO 14025, type

III (EPD) and EN 18504 „Sustainability of construction works. Environmental product declarations“. The examination of the environmental and health compatibility criteria also includes the entire life cycle of RHEINZINK products, from the raw material extraction to processing and use to recycling and disposal. It is based on a life cycle assessment according to ISO 14040 (LCA) (please request the certificate free of charge).

Electromagnetic Radiation is safely shielded

There is much public controversial debate about electromagnetic radiation. The International Society for Electromog Research (IGEF e.V.) has provided information here on RHEINZINK's shielding properties. The result: Over 99% of electromagnetic smog present is shielded. Biological measurements on people confirm the technical measurements and show a harmonising effect on heart, circulation and the nervous system. Body relaxation increases.

Remaining Values

With a service life that spans several generations, RHEINZINK is a material that sets new standards. The 30-year guarantee highlights the durability of the 100% recyclable material. This offers additional protection.

1.2 Marking

RHEINZINK sheets and coils:
Recognisable by the consecutive coloured stamping on the metal underside.

RHEINZINK-Roof Drainage Products:
Recognisable by the brand embossing.

RHEINZINK-Roof Drainage Accessories:
Recognisable by the brand embossing.

RHEINZINK-Palette Identification:
Recognisable by the packaging label with detailed product data.

1.3 Material Properties

- Density (spec. weight) 7.2 g/cm³
- Melting point 418 °C
- Expansion coefficient:
in a longitudinal rolling direction: 2.2 mm/m x 100 K
in a transverse rolling direction: 1.7 mm/m x 100 K
- Typical joining techniques: seaming, soft soldering, bonding, screwing, riveting
- Non-magnetic
- Non-combustable
- Electromagnetic radiation shielding
- Recyclability 100%
- High recycling rate
- Assured material cycle
- Environmentally compatible (EPD)
- Natural material
- Low energy use
- Long service life
- Vital trace element
- Extensive resources

Metal thickness (mm)	Weight (kg/m ²)
0.70	5.04
0.80	5.76
1.00	7.20

RHEINZINK weight according to Metal thickness in kg/m² (Numbers are rounded)



A



B



C



D

1.4 Patina Formation

On the natural RHEINZINK-prePATINA surface forms a bonded natural patina in the atmosphere. In so doing all the environmental influences from the air and rain water are integrated into the surface development. The material surface is maintenance free and as a natural product does not require care or cleaning. When using the natural RHEINZINK-PATINA LINE surfaces in areas subject to a marine climate, white deposits may develop on the surface due to the salt in the atmosphere. These natural deposits integrate into the natural patina and because of the colour contrast, are more visible on the darker, RHEINZINK-prePATINA graphite-grey surface. This will not affect the function or expected service life of the material when used on facades, roofs or other cladded building components. The natural patina will appear lighter when used in locations where the air contains chlorides. When used in environments where sulphur levels are higher, (e.g. industrial pollution), the patina may appear somewhat darker than usual. If a change to the surface is not desired from the formation of patina, we recommend using RHEINZINK-PROTECT for surface quality (see page 7).

1.4.1 RHEINZINK-prePATINA bright rolled

Application for all sheet metal work in seaming and soldering techniques. Natural patina forms at different times depending on the application or roof pitch. In areas protected from rain water e.g. beneath eaves or on roof edges sometimes only after a few years.

1.4.2 RHEINZINK-prePATINA blue-grey and graphite-grey

The pre-weathering process was developed by RHEINZINK 25 years ago especially for use in areas where a "finished" picture of the RHEINZINK surface is desired even at the hand-over of keys. This process allows the production of colour of a natural patina although the natural patina itself only forms after installation.

RHEINZINK is the only manufacturer world wide who uses this unique pre-weathering process. The use of a pickling process compared to a coating or phosphating process has two distinct advantages: Pickling gives the surface the appearance of a genuine patina, something that only occurs otherwise after a long time through natural influences. Pickling produces an even colour tone but is not comparable however with a RAL shade. A protective coating applied to the surface achieves temporary protection for storage, transport and processing. This protective film makes oil-free forming possible for processing in the profile roll forming machines.

The RHEINZINK quality prePATINA graphite-grey is the dark alternative and may, after a few years during the formation of patina and depending on the regional climate, develop a slight dark green sheen as with slate.

During the pickling process other natural surface properties are preserved - the surface remains solderable. The visible "Ageing with dignity" is not prevented by pre-weathering and has proved its worth in practice over many decades. The material largely reduces the typical reflections of the surface of thin sheets (oil canning).

1.4.3 Information about Processing

In order to avoid surface reactions from excessive sweating from the skin and other impurities caused by the building site, oil-free clean textile gloves should be worn.

Suitable products can be found at www.rheinzink.de/werbemittelshop



1.4.4 Surface Uniformity

We make every effort to supply profiles with surface uniformity. Production-related slight differences can occur, which are purely of appearance in nature and which, in the PATINA LINE, usually even out during the formation of patina. In order to exclude specific product-related visual imperfections, particular requirements should be requested with respect to surface uniformity.



* environmental label for building products recongnized by the German Federal Environmental Agency

MATERIAL

1.4.5 Protection during Transportation and Installation

Because of the high quality of our products, the surface qualities of PROTECT LINE, COLOR LINE, INTERIEUR LINE and prePATINA graphite-grey are supplied with a protective film. Our facade profiles are also supplied with this protective film. The film protects the surface during transportation, storage and installation and against negative influences during the building stage.

The foliation is a self-adhesive protective plastic film that is applied at the factory and is exposed during installation to UV radiation and temperature variations. If this exposure continues for a long time, the properties of the film may change and cause adhesive residues on the metal surface. To avoid these changes, we recommend removing the film immediately after the installation process. The film should be removed at once from the surface as moisture could be hold back at loose film edges. This could cause visual imperfections (formation of zinc hydroxide).

1.4.6 Information on Wave Formation Strip Material

A characteristic surface phenomenon with strip material is the typical slight wavy structure of thin sheet metal.

These waves form because of the reaction of a natural material to the winding and unwinding process in the factory and the corresponding reworking (profiling etc.) during workshop preparation and installation.

The surface finish prePATINA bright rolled emphasises the changing appearance because of light reflection. With increasing patination this perception reduces. If from the start e.g. for facades and roof surfaces, a high grade appearance is desired, we recommend, the surface finishes prePATINA blue-grey or prePATINA graphite-grey.

Sheet Material

An improved evenness is obtained by using sheet material, which RHEINZINK can manufacture and supply at lengths up to 6 m. The measurement of corrugations is subject to strict controls and must not exceed the value defined under DIN EN 988 (max. 2 mm per metre). The RHEINZINKworks standard prescribes for each metre of sheet length e.g. max. 1 wave 1 mm in height

1.5 Response to external Influences

1.5.1 Influence of other Metals placed on Top

Unproblematic:

- Aluminium, shiny or coated
- Lead
- Stainless steel
- Galvanised steel (rust streaking possible, e. g. caused by unprotected cut edges)

Problematic:

- Copper

1.5.2 Influence of other Building Materials placed on Top

Problematic:

- Unprotected bitumen roof sheeting without grit layer/gravel fill (acid oxidation)
- PVC roof sheeting (hydrochloric acid emissions)

1.5.3 Influence of other substances incl. Mortar

- Mineral-based materials such as chalk, cement or plaster plus moisture have a corrosive effect on metals.
- A suitable separating layer must be fitted between RHEINZINK building profiles and these building materials.
- Installation sequence: Plasterwork prior to RHEINZINK (if possible use material with plastic film)

1.5.4 Effect of Oil Heating

Discolouration on RHEINZINK surfaces can occur in the case of oil-driven heating systems because of the ingredients of the heating oil and additives. Such discolouration is more or less visible on all covering materials and has no influence on the durability of the roofing.

Note:

The builder must be informed about this situation. With gas-operated plants, discolouration is not expected.

1.5.5 Base and Splash Water Areas, Rock Salt

At base areas splash water can cause staining and disturb the patination process. Rock salt in connection with moisture has a corrosive effect on metals. Therefore facade claddings should be installed with a sufficient space to the ground, not less than 30 cm as a rule.

1.6 General Processing Principles

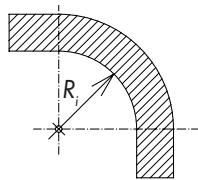
1.6.1 Marking

Mark using soft pens and not sharp pointed objects (scribing tool, pocket knife).

1.6.2 Forming/Radii of Curvature

Zinc and its alloys are anisotropic, which means they have different properties parallel and crosswise to the rolling direction.

The mechanical effect of this anisotropism is reduced to such a degree with RHEINZINK through the alloy and rolling process, that RHEINZINK independent of the rolling direction can be folded at 180° without incipient cracking.



Material thickness	Radius of curvature R_i minimum
1.00 mm	1.75 mm
1.20 mm	2.10 mm
1.50 mm	2.63 mm

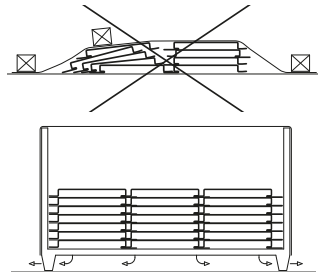
Recommended radii of curvature (inner radius) for RHEINZINK

1.6.3 Length Change caused by Temperature

With coverings, roofs, and facade cladding (panel length), sheet metal work and roof drainage (profile length), changes in length caused by temperature (expansion and contraction) must be taken into account in the design. In particular for penetrations, corners, joints and other transitions, the right design measures must be implemented; e.g. panels or profiles must be installed stress-free from the expansion technology perspective.

1.7 Storage and Transportation

RHEINZINK products must always be stored and transported in dry and ventilated conditions.



Storage and Transportation (Schema)

Note:

Container storage is the best method for optimum storage at the building site. If necessary request a dry and well-ventilated room from the building management. Do not place covers directly over the material as this can cause moisture or rain water to penetrate between the profiles and in the absence of ventilation lead to deterioration in appearance because of the formation of zinc hydroxide.

1.8 Structural Physics

- Weather protection
- Moisture regulation
- Thermal economy
- Rear ventilation
- Sound proofing/fire protection

The rear-ventilated facade is a multi-layered system, which, when designed properly, guarantees permanent functional capability. By functional capability, we mean that all requirements pertaining to structural physics are met. This is described in detail below.

By separating the rain screen facade from the thermal insulation and supporting structure, the building is protected from the weather.

The supporting outer walls and the insulation remain dry and thus fully functional. Even when driving rain penetrates open joints, it is quickly dried out as a result of the air circulation in the ventilation space.

The bracket-mounted rear-ventilated facade protects the components from severe temperature influence. Heat loss in the winter and too much heat gain in the summer are prevented.

Thermal bridges can be reduced considerably.

1.9 Windproof Building Envelope

This does not apply to the rear-ventilated facade, as this component itself cannot be windproof.

The building must be windproof before the rear-ventilated facade is installed. A solid brick or concrete wall will ensure that the building is windproof. Penetrations (e.g. windows, ventilation pipes, etc.) must be sealed from the building component to the supporting structure. In the case of a skeleton construction, the wall surface must also be sealed.

If the building envelope is improperly sealed (wind suction, wind pressure), there is a high degree of ventilation/energy loss, which, along with drafts, creates unpleasant room temperature. Dew or condensation can be expected on the leeward side of the building.

Air circulation in the room should be provided through air conditioning or by opening the windows.

MATERIAL

1.10 Weather Protection

Rear-ventilated facade cladding protects the supporting structure, the water-proofed thermal facade insulation, and the substructure, from the weather.

Bracket-mounted rear-ventilated facade provide a high degree of protection from driving rain.

Because of the physical structure, it is impossible for the rain or capillary water transfer to reach the insulating layers. Furthermore, moisture can always be drawn out through the ventilation space. This allows the insulating layers to dry out quickly, without impeding thermal insulation.

1.11 Moisture

Rear-ventilated facade cladding provides protection from driving rain and moisture. Moisture penetration as a result of diffusion does not occur in the rear-ventilated facade.

When the supporting structure is wind-proof, the diffusion current density is too small to cause the dew point temperature to drop.

1.12 Thermal Economy

In order to understand the thermal economy of the rear-ventilated facade, we must first consider the various heat flow rates, as well as the air exchange between the rear-ventilation space and the outside air, separately, in terms of structural physics.

1.12.1 Thermal Insulation

In the winter, heat flow from the inside to the outside is referred to as a heat transfer co-efficient (U-value).

The smaller the value, the smaller the quantity of heat escaping to the outside. The U-value is determined by the heat conductivity of the thermal insulation and insulation thickness.

The high-grade thermal insulation is a contribution to environmental protection and pays for itself in a relatively short period of time through low heating costs.

1.12.2 Summer thermal Insulation

Summer thermal insulation should provide comfort: The amount of heat flowing from the outside to the inside should remain as small as possible. Proper thermal insulation, as well as a certain mass in the construction itself, will help to achieve this objective.

The advantage of a bracket-mounted, rear-ventilated facade, is that a large portion of the heat which streams onto the cladding is diverted through convective air exchange.

1.12.3 Thermal Bridges

Thermal bridges are elements of the building envelope, that have high thermal conductivity (have high U-values) and are continuous from the warm side to the cold side of the thermal insulation. Apart from general design-dependent thermal bridges of a building, e.g. protruding balconies, the installation of the substructure must be taken into account in the case of a rear-ventilated facade. Thermal bridges can be reduced significantly by installing an insulating strip between the supporting structure and the substructure (thermal break).

Proper installation of the insulation reduces the formation of thermal bridges.

1.13 Fire Protection

Metal facades with a metal substructure and appropriate fasteners meet the highest requirements for non-combustibility (Building Material Class A1, DIN 4102). In the case of bracket-mounted, rear-ventilated facades, it may be necessary to install firestops.

1.14 Rear-Ventilation

The free ventilation cavity between the facade cladding and the layer behind it must be at least 20 mm. Tolerances and plumbness of the building must be taken into account. In some places, this rear-ventilation space may be reduced locally up to 5 mm – e.g. by means of the substructure or the unevenness of the walls.

1.14.1 Air Intake and Exhaust Openings

The rear-ventilation space requires intake and exhaust vent openings. These openings must be designed so that their functionality is guaranteed for the lifetime of the building. It cannot be hindered through dirt or other external influences. The openings are located at the lowest and highest point of the facade cladding, as well as in windowsill and window lintel areas, and penetrations. In the case of higher, multi-storey buildings, additional intake and exhaust vent openings should be provided (e.g. at each floor).

1.15 Soundproofing

To prove that a facade design is sound-proof, the entire wall structure, as well as each building component (windows, etc.) must be defined. The use of proper static fasteners will prevent any potential noise development as a result of the cladding.

**2. RHEINZINK Profile Group
Reveal Panel SF 25**

The reveal panel opens up a wealth of design possibilities for the designer, because it can be installed vertically and diagonally. Variable spacing of the reveal joints (0-30 mm) underscores segmentation when the reveal panel is used. The reveal panel is available in widths of 200-333 mm.

Technical Approval

The RHEINZINK-Reveal Panel System is subject to EN 14782 and is approved for use with substructure spacing ≤ 1.00 m (other support spacing possible on request). In Germany the facade system

is additionally governed by the Construction Products List B, Part 1 (edition 2010/1), section 1.0 relating to construction products subject to harmonised standards according to the Construction Products Directive, section 1.4.10 relating to prefabricated building components made of metal.

Static Load Tables

Load tables are based on DIN 18807 for profile section properties.

Deflection:

1/180 for facade components

Safety factor:

g = 1.50

(this is taken into account in the tables)

Units for Loads and Forces

The load tables indicate permissible forces and loads in kN/m².

Deflection values in relation to span width are given for single span, double span or multi-span conditions.

The following indicators are used for display purposes:

- Single span
- Double span
- Multi-span

Span width in m		0.50	0.60	0.80	0.90	1.00	1.20	1.40	1.50	1.60	1.70
Permissible wind load in kN/m ²	■			3.50	3.14	2.83	2.36	2.00	1.89	1.78	1.67
	■ ■	2.20	1.85	1.42	1.28	1.14	0.95	0.86	0.82	0.77	0.73
	■ ■ ■	2.50	2.14	1.56	1.41	1.30	1.09	0.95	0.91	0.87	0.83

SF 25 - 200, s = 1.00 mm

Span width in m		0.50	0.60	0.80	0.90	1.00	1.20	1.40	1.50	1.60	1.70
Permissible wind load in kN/m ²	■			2.83	2.50	2.27	1.89	1.62	1.49	1.40	1.32
	■ ■	1.78	1.48	1.14	0.99	0.93	0.82	0.70	0.65	0.59	0.53
	■ ■ ■	2.04	1.70	1.30	1.16	1.03	0.91	0.81	0.76	0.71	0.66

SF 25 - 250, s = 1.00 mm

Span width in m		0.50	0.60	0.80	0.90	1.00	1.20	1.40	1.50	1.60	1.70
Permissible wind load in kN/m ²	■	3,37	2.82	2.12	1.89	1.71	1.41	1.18	1.07	0.97	0.89
	■ ■	1.36	1.13	0.89	0.82	0.74	0.59				
	■ ■ ■	1.48	1.30	0.98	0.91	0.85	0.72	0.58	0.52		

SF 25 - 333, s = 1.00 mm

Table 4: Load table for reveal panel

Basis for design: uniformly distributed load, including the weight of the profile itself

Safety factor: 1.50

Tensile yield strength: 100 N/mm²

Width of support profile: ≥ 50 mm

DIN 18807/experimental testing at the University of Karlsruhe, Germany

PROFILE GEOMETRY

2.1 Profile Geometry

Metal gauge

s = 1.00 mm / 1.20 mm

Cover widths SF 25 s = 1.00 mm	Weight
200 mm	11.20 kg/m ²
225 mm	10.70 kg/m ²
250 mm	10.40 kg/m ²
300 mm	9.84 kg/m ²
333 mm	9.60 kg/m ²

Cover widths of 200-333 mm

All sizes in between, in mm intervals, are possible. For widths of over 250 mm, we recommend using a material thickness of 1,20 mm.

Possible Applications

- Facades
- Soffits
- Parapets

Fastening

Using rivets or screws, the panels are fastened directly onto the substructure, through the protruding leg of the groove (see detail above).

Linear expansion is restricted by limiting the length of the facade panel, and accommodated via the deflection of the substructure.

Dimensions

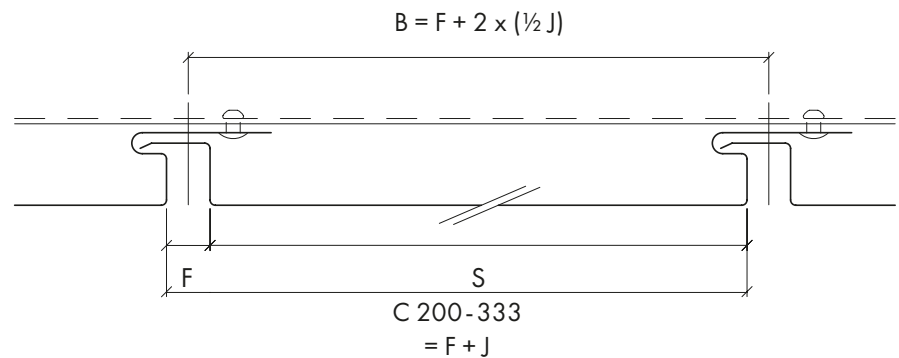
- Drawings: Dimensions in mm
- Panel designation: SF 25-287 (example)
- Standard length: ≤ 4000 mm
- B: bay width
- C: cover width
- J: joint width
- F: face width

Tolerances

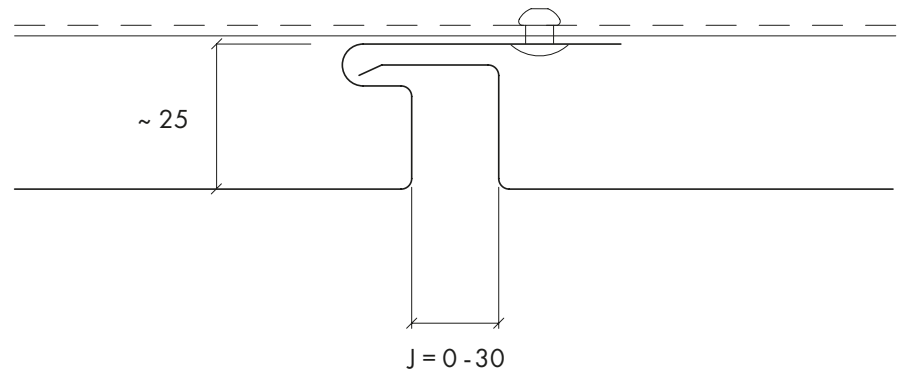
As per RHEINZINK works standard

Note re Installation:

- Reinforcing the panels at both ends with backfolds is recommended
- A 0-33 mm wide reveal joint (J) is possible
- The cover width (C) of the panel is manufactured with a minus tolerance of < 1 mm.



System section



Joint configuration



Telecom Giubiasco, Giubiasco, Switzerland

**2.1.1 RHEINZINK-Reveal Panel,
vertical Installation**



*RHEINZINK panel, SF 25 with 20 mm
reveal joint*



Theater am Marientor (previously: Les Misérables), Duisburg, Germany



*RHEINZINK panel, SF 25 with 15 mm
reveal joint*

JOINT FORMATION

2.2 Joint Formation

2.2.1 Vertical Panels

2.2.1.1 Horizontal Joint

A: Slave Profile

A virtually seamless transition from one panel to the other strongly accentuates the verticality of the facade. This type of joint formation does not affect the rear-ventilation space.

Fastening

Using rivets or adhesives, fastening is one-sided directly onto the substructure or onto the lower panel.

B: Flashing Profile installed within horizontal joint

Panel with backfolds closes the vertical joint and frames the panel with a surrounding reveal joint.

C: Cornice Profile

The horizontal joint can be accentuated by using profiles of varying widths. It is important not to interrupt or close off the rear-ventilation space.

2.2.1.2 Vertical Joint

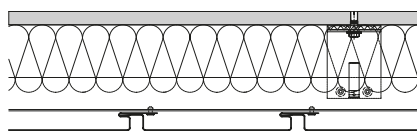
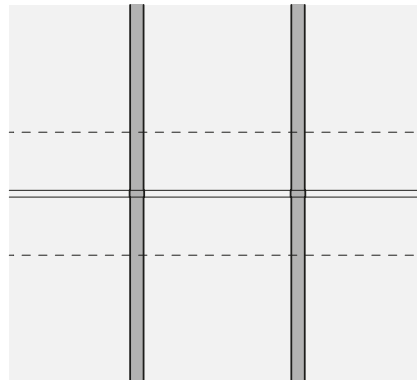
D: Butt Joint

This joint is formed by using a certain type of panel. It can be developed in varying widths from 0-30 mm and affects vertical segmentation.

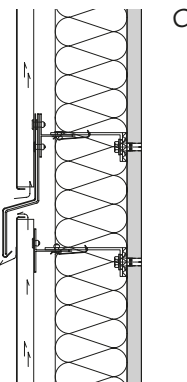
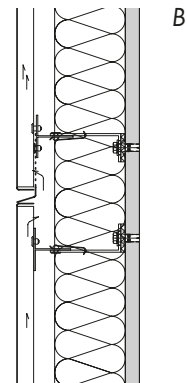
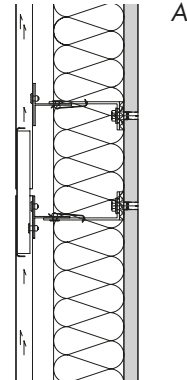
Note:

- Theoretically, all of the joint formations illustrated here can be used on all vertically installed RHEINZINK panels.
- Facade sections should be separated by means of expansion joints - a max. of 4000 mm (Example A, B, C).
- When determining panel lengths (Example C), air intake and exhaust openings must be taken into account.

View



Profile



2.3 Accommodating thermal Expansion of Facade Cladding

- Thermal expansion of facade profiles is accommodated by means of expansion joints.
- Statically connected fields cannot exceed 4000 mm in length. Exceptions must be discussed and approved by Application Engineering Department*.
- In the area of expansion joints the fixing to the substructure must be executed accordingly.
- The substructure must be designed to be independent for each facade field around the expansion joint.

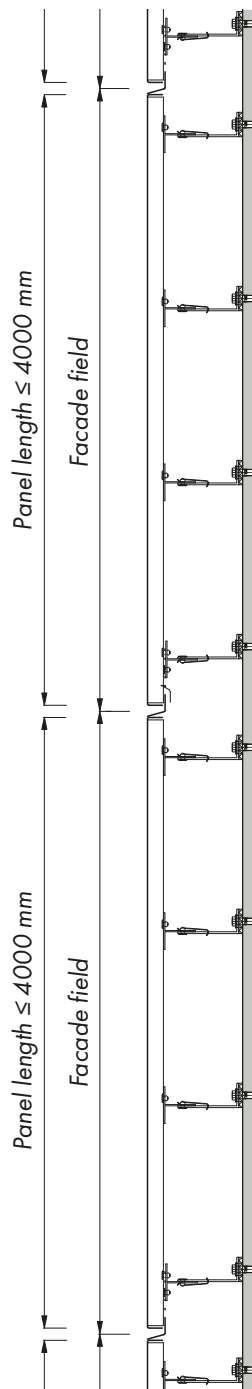
Two examples of facade implementation illustrate the connections schematically:

Example A

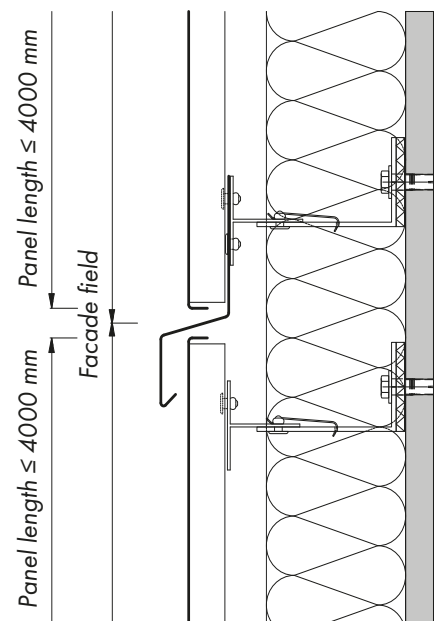
Large cladding components each form a field, which is fastened separately from the next field, by means of expansion joints.

Example B

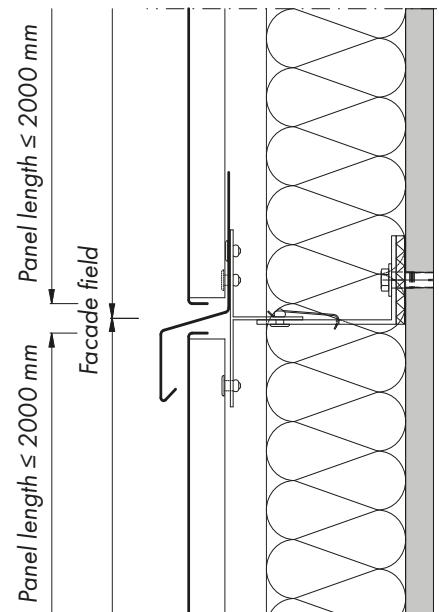
Small facade components are combined to create one facade field. Linear expansions can be accommodated after every third component, however, the total length of 4000 mm should not be exceeded.



Example A: Facade field joint (separation by means of expansion joints)



Example B: Facade joint serving as expansion joint



Example B: Facade joint serving as design feature only

* see addresses and contacts on page 42

SUBSTRUCTURE

2.4 Substructure

RHEINZINK facade systems are normally installed on substructures consisting of single, double, or multiple non-ferrous metal systems. Apart from efficiency and the structural advantages provided by these systems, they also guarantee control and monitoring of fastening patterns and compliance with fire protection regulations. Moreover, the double and multiple systems enable building tolerances to be adjusted without difficulty.

The architectural appearance of the profiles determines the design of the substructure. Before the substructure is constructed, those concerned must determine the appropriate design, otherwise – inevitably – the design would determine the architecture.

Note:

Use of wood as a substructure for large facade surfaces in system technology is not recommended because of its behaviour when damp and difficulty in adjusting tolerances.

However, a dried wooden substructure is definitely suitable for small surface applications such as dormers, fascias and gable walls.

The location and orientation of the fixed and sliding points for metal substructures must be determined based on the type of cladding, the surface and length of the panels.

With single substructure systems, the disadvantages certainly outweigh the advantages, such as:

- inability to accommodate building tolerances
- large thermal bridges

All technical problems are solvable when double/multiple systems are used:

- local thermal bridges only
- rear-ventilation throughout is guaranteed

However, the expensive and elaborate design coupled with the fact that two or more installation procedures must be implemented must be taken into consideration.

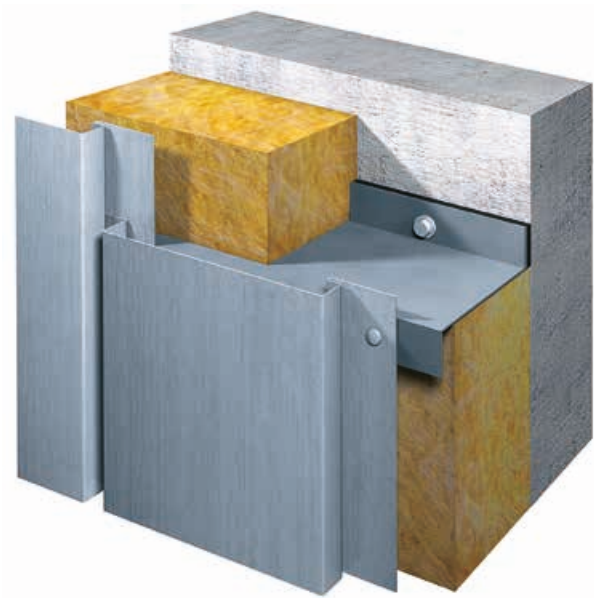
Double or two-part systems constitute the “happy medium”:

Advantages

- cost-effective
- easy accommodation of building tolerances
- local thermal bridges only

Disadvantages:

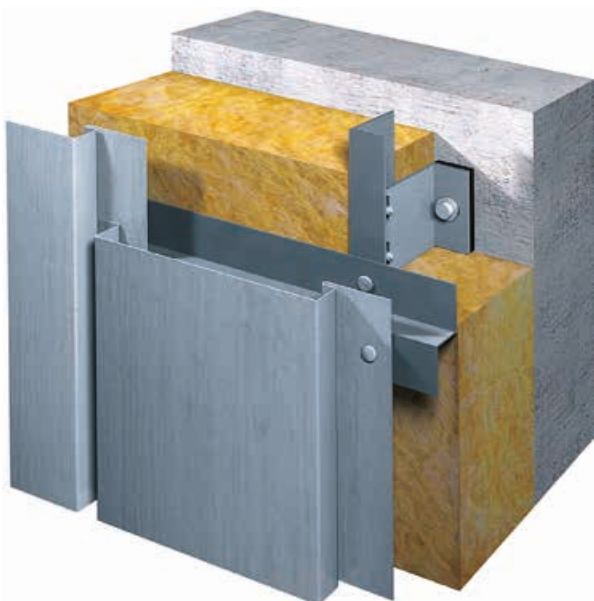
- two installation procedures
- depending on the detailing requirements additional costs can occur



Single substructure



Double or two-part substructure



Multi-part substructure

FASTENING

2.5 Fasteners

Fasteners are parts that connect the cladding to the substructure mechanically. The edge distance of connections and fasteners in the substructure must be at

least 10 mm. Only corrosion-resistant fasteners, which guarantee long-term function capability, may be used.

2.5.1 EJOT® Drilling Screws

Area of Application

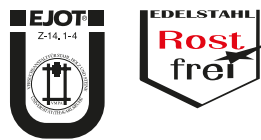
Drilling screws to join

- RHEINZINK panels onto
- steel substructures 1,5-4,0 mm
- aluminum substructures 1,5-4,0 mm

JT3 - FR - 6 - 5,5 x 25 - E11



Marking	Ø x mm	Length mm	Drill capacity t _I + t _{II} mm	Clamping thickness mm
JT3 - FR - 6	5.5 x	25	min. 0,63 + 1,5 max. 2,0 + 4,0	7.0



Note

When using screws without sealing washers, clamping thickness increases by 3 mm.

2.5.2 EJOT®

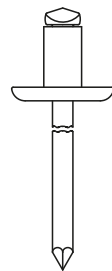
Blind Rivet with large Collar

Aluminum (Al) rivet sleeve
Rivet mandrel made of high-grade steel
Secure connection

Area of Application

- Use blind rivets to fasten
- RHEINZINK panels
- steel or aluminum profile sheets onto
- steel substructures
- aluminum substructures

Blind rivet K14 - Al/E - 5,0 x 8,0



Marking	Ø x mm	Length mm	Clamping thickn. mm	Drill hole Ø mm
Blind rivet K14 - Al/E -	5.0 x	8.0	2.5 - 4.5	5.1
	5.0 x	10.0	4.5 - 6.0	5.1
	5.0 x	12.0	6.0 - 8.0	5.1
	5.0 x	18.0	12.0 - 14.0	5.1

2.5.3 EJOT® Blind Rivet

Aluminum (Al) rivet sleeve
Rivet mandrel made of high-grade steel
Secure connection

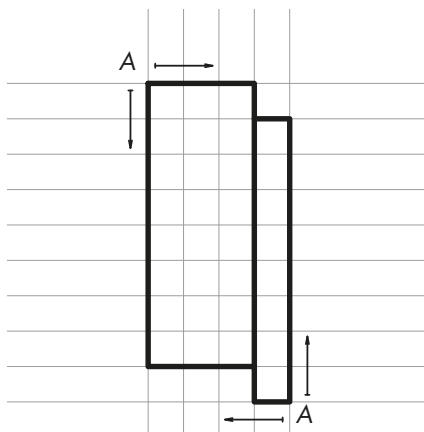
Area of Application

Blind rivets are used to fasten secondary components, e.g. slave profiles.

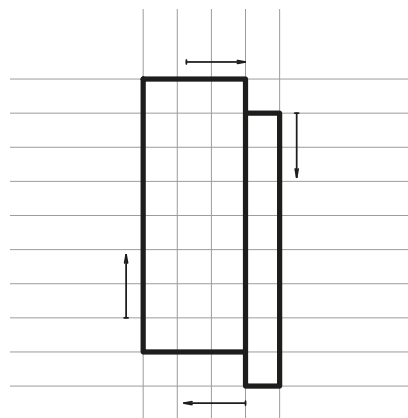
Blind rivet Al/E - 4,8 x 10



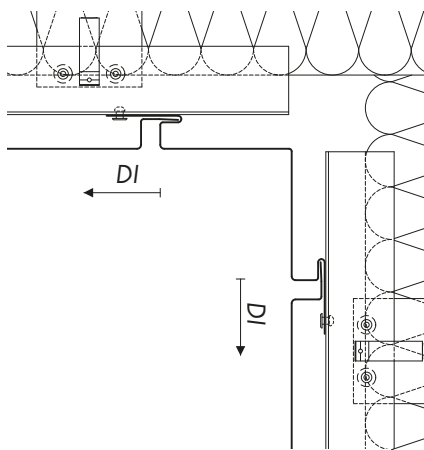
Marking	Ø x mm	Length mm	Clamping thickn. mm	Drill hole Ø mm
Blind rivet Al/E -	4.8 x	10.0	0.5 - 6.5	4.9
	4.8 x	15.0	4.5 - 11.0	4.9
	4.8 x	25.0	11.0 - 19.5	4.9



A: start of installation

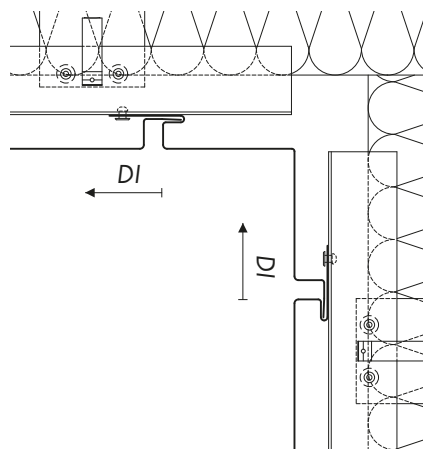


Installation can begin anywhere



Example A:

The corner panel is installed first. Building tolerances are accommodated either by installing an adaptor panel in the centre of the facade, or, next to the outside corner panel.



Example B:

The corner panel is part of the continuous installation sequence. Any tolerances that need to be adjusted at this point can be accommodated by the corner panel.

2.6 Installation and Building Tolerances

Adapter panels are required to accommodate building and installation tolerances.

The location of these panels in the facade is determined by the installation process and sequence.

Trim work, e.g. window and door frames, corner panels, joint profiles, etc., should be installed first. The panels are manufactured at the RHEINZINK system centre to precise dimensions.

Dimensional adjustments can be made on site by making minimum changes to the joint width. The performance of the system is not affected by this.

The panels are installed starting at Installation Point A. Adaptor panels are generally inserted before the next section.

Depending on the size of tolerance to be accommodated, one or two adaptor panels will be installed.

Note:

Tolerance adjustment using adaptor panels ≤ 15 mm difference is hardly noticeable.

DI: direction of installation

DETAIL CONCEPT

2.7 Detail Concept

Detail design creates the lasting impression of the facade. Plan details or sections are required for most of the corners, reveals, as well as connections and terminations. These must be coordinated during detail design development. Two significant design variations will illustrate this.

Visible Width of the Building Profile or Section

The spectrum ranges from sharp-edged profiles to profiles that are several centimeters wide. Precise planning allows for the widths of all termination and frame profiles to be the same, or, to vary these in desired proportions.

Projection of Profiles

Depending on the detail design, the profiles either protrude from, or lie flush with the facade surface.

This overview illustrates three possible principles:

Profile Group 1

A relatively wide joint profile (visible width ca. 60 mm) is selected as the building profile, which is terminated flush with the facade surface.

Various facade systems, such as cassettes or panels, can be used to form the corner of the building.

Profile Group 2

A sharpe-edged profile will be installed flush with the curtain wall, so that the window frame design is not accentuated.

Profile Group 3

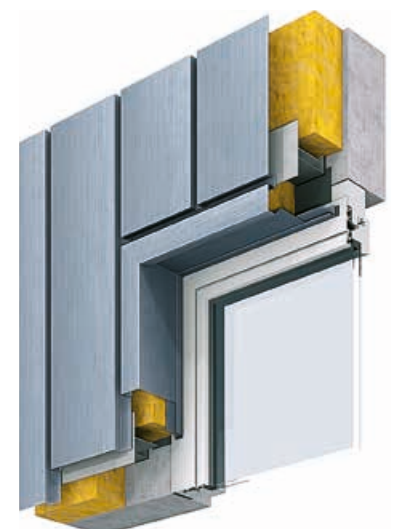
The jamb profile selected for this window surround can replicate the joint profile (see profile group 1) and is used as a flashing in conjunction with the window sill and lintel.



Profile group 1



Profile group 2



Profile group 3

2.8 Details

2.8.1 General Instructions

Third Party Trades

Connections of facade claddings to third party trades are necessary and unavoidable in most cases to ensure impermeability. Because of the warranty obligations on the part of the craftsman, sub-contracting connections and fasteners to third party trades (e.g. windows), must always be approved by the project manager of the trade in question. Please keep the location of the scaffold anchors in mind during planning/design.

Wall Structure

The layered construction is equal to a rear-ventilated metal facade. A solid brick/concrete wall or stud wall with sheathing serves as the supporting structure.

Substructure

See Chapter 2.4

Load Effect

In the case of two-dimensional cladding profiles (all panel types) that are only fastened on one side, flanged backfolds are required to provide additional reinforcement for all profiles in exposed building locations.

Installation Instructions

We will not go into installation details here, because, when it comes right down to it, these are strongly influenced by other trades when it comes to windows, structural steel construction, etc. The installation processes must always be determined individually for each project, considering interfaces and the sequence of installation. Notable deviations from the rule will be pointed out for various details.

Drip Edges

Standards and regulations must be taken into consideration in the detail design, e.g. drip edges above rendered facades (dirt as a result of pollution).

Diagonal Installation

RHEINZINK-Reveal Panels can also be used for diagonal facade installation. To a large extent, technical implementation of the design is commensurate with horizontal installation. Foldbacks must be fabricated on site.

2.8.2 Pictographs

Horizontal profiles (see page 26)

H1: outside corner

H2: inside corner

H3: window jamb

Vertical profiles (see pages 26/27)

V1: base

V2: windowsill

V3: window lintel

V4: roof edge

V5: expansion joint

Variations

In some cases, variations for the same detail are depicted (e.g. window lintel with/without shade). These are identified and include additional explanatory texts or drawings.

Applicability

The details and designs depicted here are suggestions, which have been implemented on various projects. Responsibility must be taken for decisions made on detail suggestions, taking into account applicable standards and regulations, as well as the stylistic intentions of the planner for the project.

Building Height	Overlap	Distance to drip edge
≤ 8 m	≥ 50 mm	≥ 20 mm
> 8 m ≤ 20 m	≥ 80 mm	≥ 20 mm
> 20 m	≥ 100 mm	≥ 20 mm

Table 6: Distance and overlap dimensions for flashings (e.g. windowsills, wall copings, verge profile, etc.)

PLANNING GRID

2.9 Planning Grid
The Grid Principle in Facade Construction

A metal facade consists of components manufactured industrially with a high degree of precision. These components determine appearance through precise horizontal and vertical segmentation. Penetrations and terminations that are not matched/coordinated with the axis grid can have a disturbing effect. The following instructions serve to assist proper planning of facade segmentation:

Principles

As a rule, a differentiation should be made between new construction and renovations when discussing grid problems. In the case of new construction, the facade grid can be coordinated or matched to the design; penetrations such as windows, ventilation piping, etc. are always secondary.

In the case of renovations, the penetrations (e.g. windows) cannot be displaced or removed, so the grid must be coordinated with the penetrations.

When deviating from the grid, the following principles apply:

- At terminations, one should begin or end with an entire module (X or Y)
- Dimensional differences of max. 15 mm (deviations from module X or Y, in the case of two-dimensional profiles), are not noticeable.
- Dimensional tolerances, which cannot be corrected (X or Y dimensional change) must be compensated either in the windowsill or roof edge area.
- Adjustments or displacements of height coordinates can only be implemented in the roof edge or base area.

The principles used to segment a facade are illustrated using the example of a vertical grid for horizontal cladding. This principle also applies to vertical facade cladding.

- B: bay width
- C: cover width
- J: joint width
- F: face width

Module Y

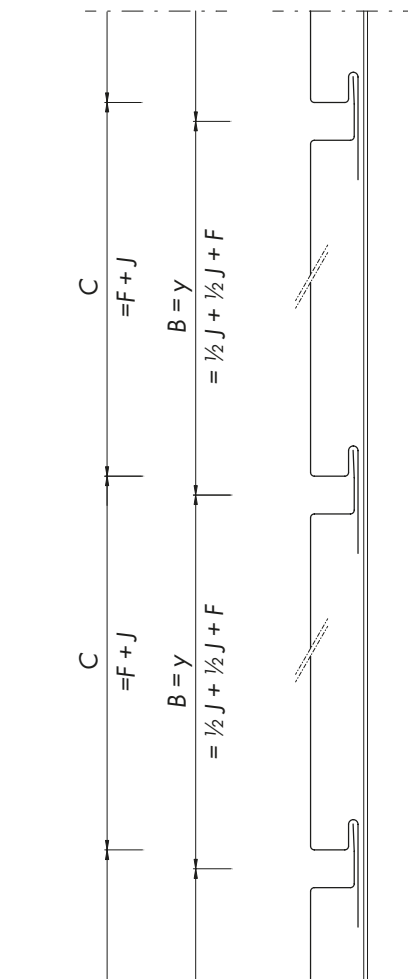
Y corresponds to the smallest segment of the facade, which is repeated again and again, e.g. panel width. The Y grid module determines the precise location of penetrations and terminations. In the case of reveal panels, the Y dimension is discretionary and is produced in cover widths of 200 mm to 333 mm, based on the project.

The bay width (Y) is formed using the visible surface of the panel and two half joints.

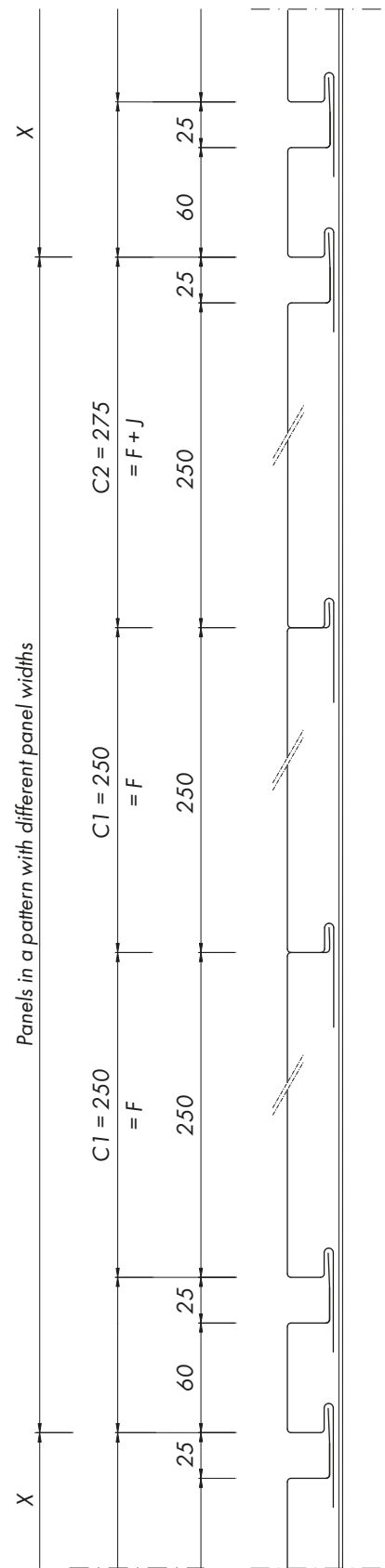
The cover width is established from the visible surface and the width of the joint. The width of the reveal can vary from 0 to 30 mm and is determined by appropriate length of the "tongue".

Dimension X

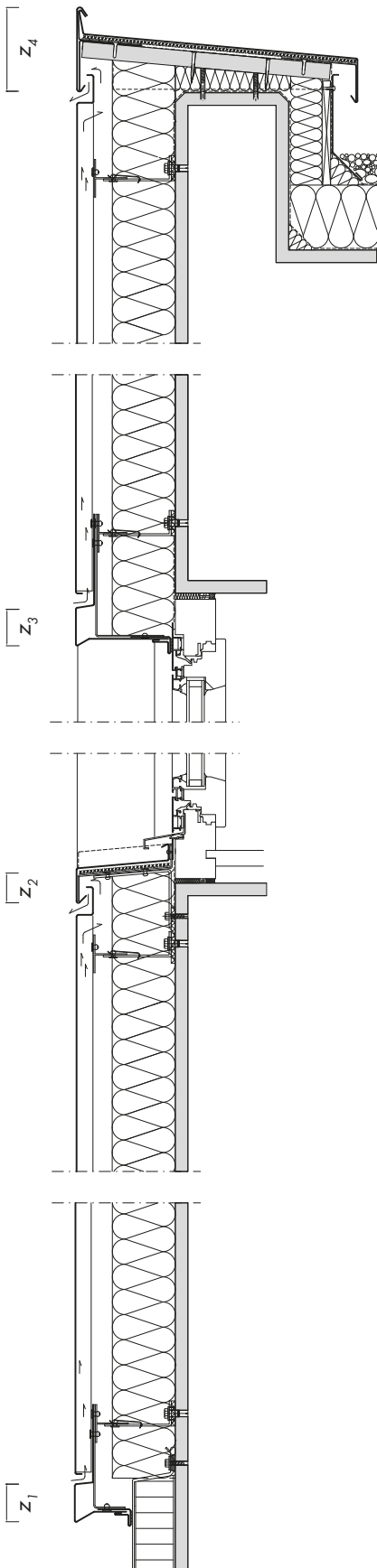
All of the sections marked with X are an integral multiple of selected module Y and, as a rule, correspond to the cover width of a profile.



Repeated panel module



Combination of panels creating a module



Position Z_4 : Roof Edge

Grid for new Construction, respectively, Renovation

If the height coordinates of the roof edge do not fit into the prescribed grid selected, the following corrective options can be selected:

- change the roof edge profile/ incline
- raise or lower the parapet wall or the roof edge board.
- Changing the X or Y module

Position Z_3 : Window Lintel

Position Z_2 : Windowsill

Grid Development for new Construction

- Determine the openings of the building shell
- Determine the window frame profile
- Determine window location
- Determine profile geometry of window connections
- Develop design details within the grid

Grid Development for Renovations

- Determine window frame profile, for new/old window
- Determine window location, for new/old window
- Determine profile geometry of window connections
- Develop design details within the grid

If the location of the window or of the detail does not fit into the grid, the following corrective options can be selected:

- Change the profile geometry of the window lintel profile or the windowsill
- Adjust window height
- change the incline of the windowsill
- Change the X or Y module

Position Z_1 : Base

Grid Development for new Construction, respectively, Renovation

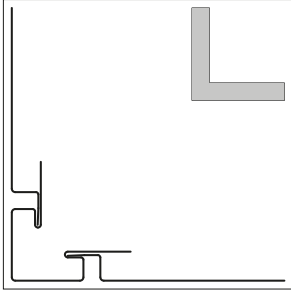
- Define potential deviations to the right or left
- Define profile geometry of base detail in accordance with corner profiles

If the location of the base does not fit into the grid, the following corrective options can be selected:

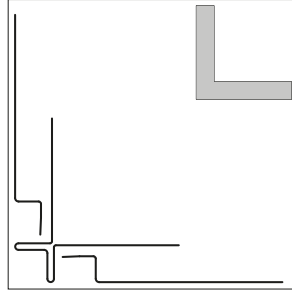
- Shift the facade connection to the right and/or left
- Change the profile geometry of the base profile
- Lower or raise the plinth masonry, if it exists or has been designed

2.10 Reveal Panel Design, vertical Application

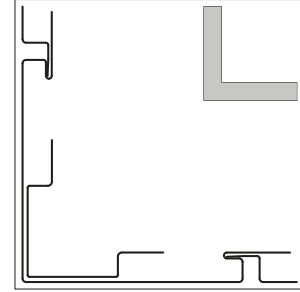
Detail H1: Outside corner, page 28



H1.1

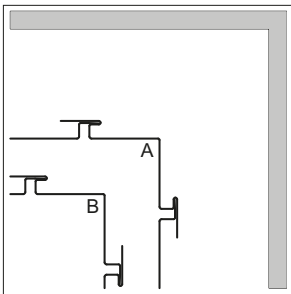


H1.2

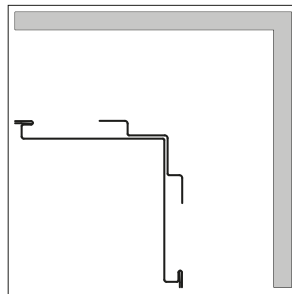


H1.3

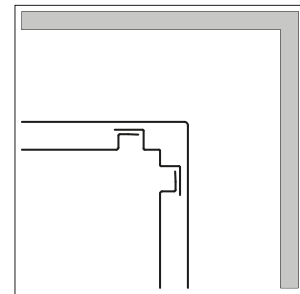
Detail H2: Inside corner, page 30



H2.1

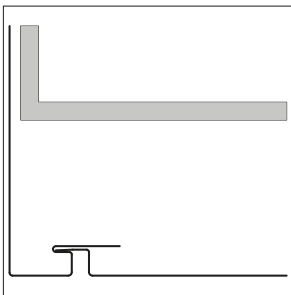


H2.2

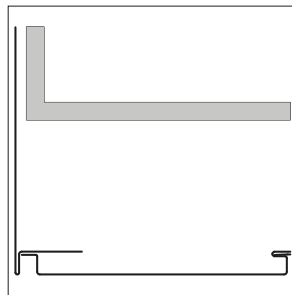


H2.3

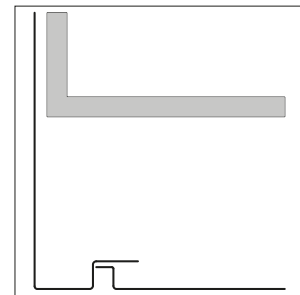
Detail H3: Window jamb, page 32



H3.1

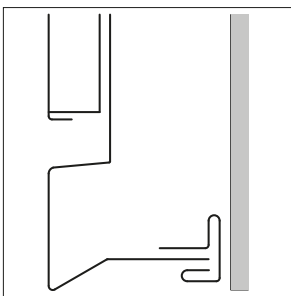


H3.2

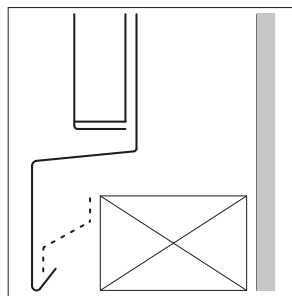


H3.3

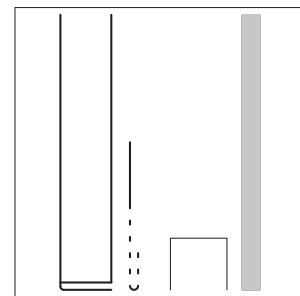
Detail V1: Base, page 34



V1.1

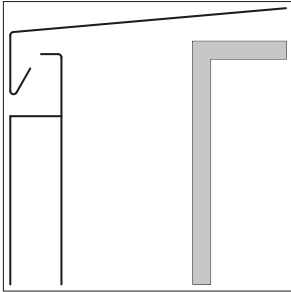


V1.2

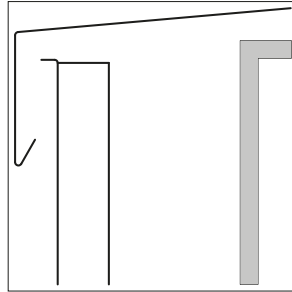


V1.3

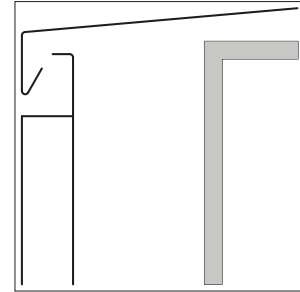
Detail V2: Windowsill, page 36



V2.1

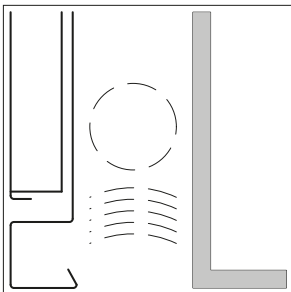


V2.2

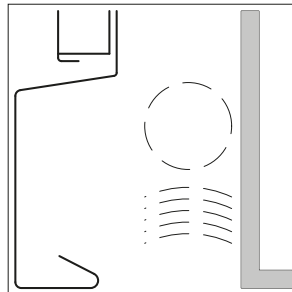


V2.3

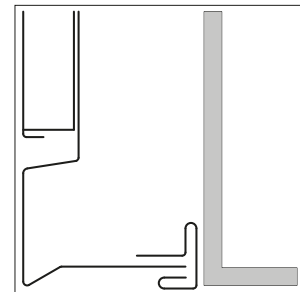
Detail V3: Window lintel, page 38



V3.1

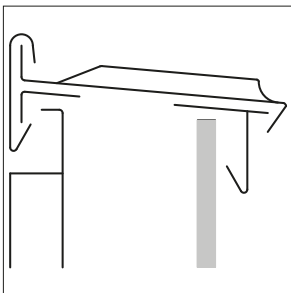


V3.2

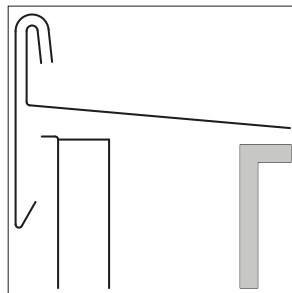


V3.3

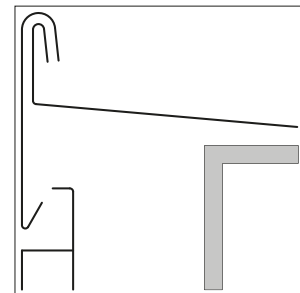
Detail V4: Two-part roof edge, page 40



V4.1

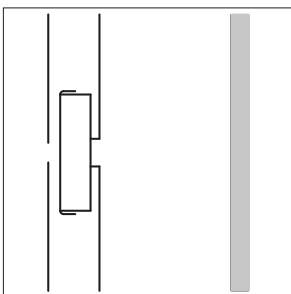


V4.2

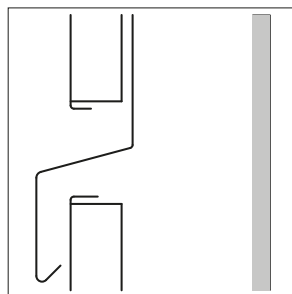


V4.3

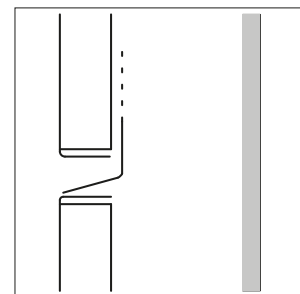
Detail V5: Expansion joint, page 42



V5.1



V5.2

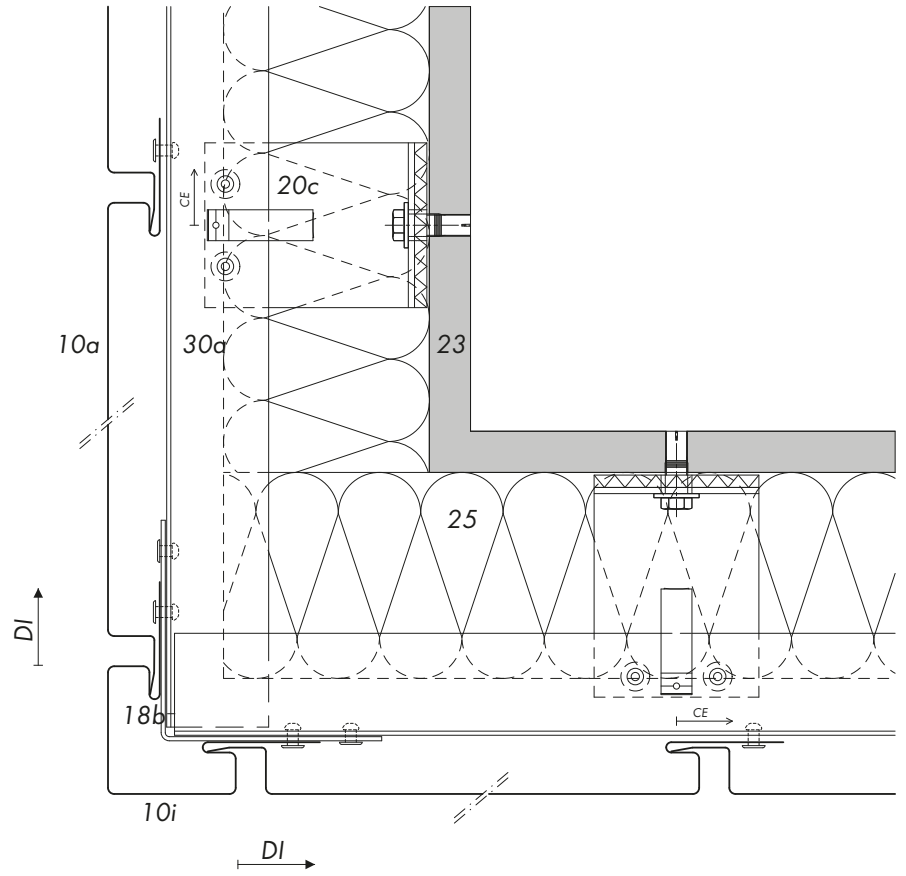


V5.3

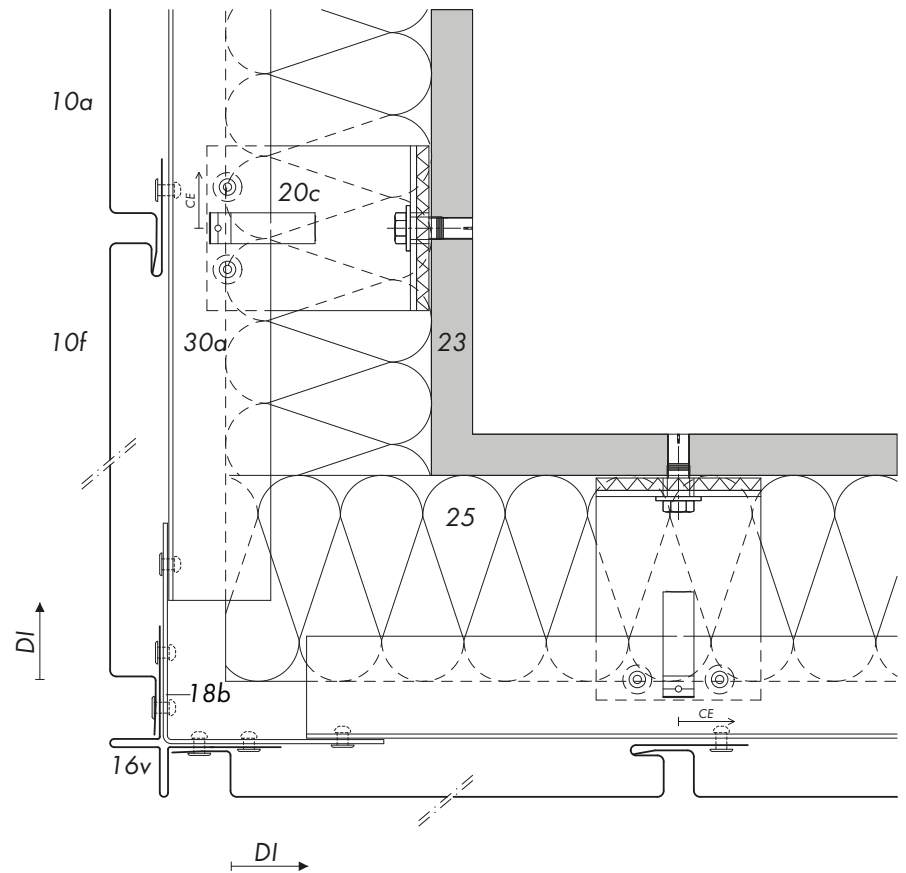
REVEAL PANELS, DESIGN AND APPLICATION

DESIGN – VERTICAL APPLICATION
DETAIL H1: OUTSIDE CORNER

H1.1

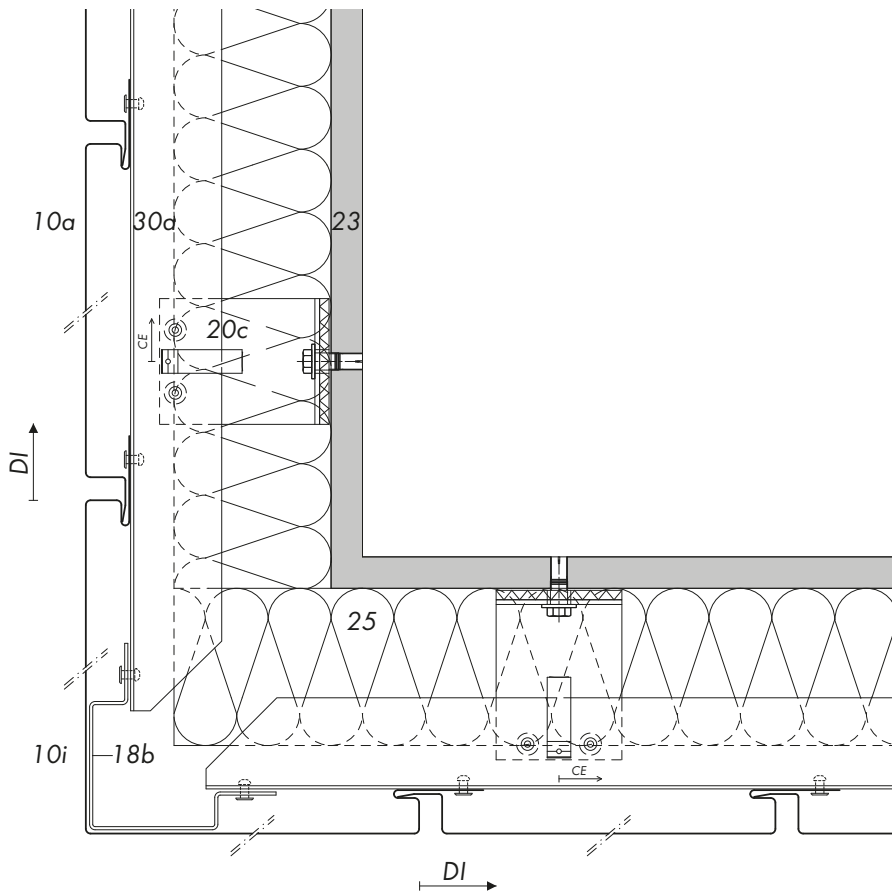


H1.2



DESIGN – VERTICAL APPLICATION
DETAIL H1: OUTSIDE CORNER

H1.3



2.10.1 Detail H1: Outside Corner

- 10 RHEINZINK-Reveal Panel SF 25
 - a Standard panel
 - f Fitting panel
 - i Corner panel, groove-groove
- 16 RHEINZINK-Building Profile
 - v Corner profile
- 18 Support Profile
 - b Aluminium
- 20 Substructure
 - c Bracket system, with thermal break*
- 23 Supporting Structure
- 25 Thermal Insulation
- 30 Ventilated Air Space
 - a Depth of air space ≥ 20 mm

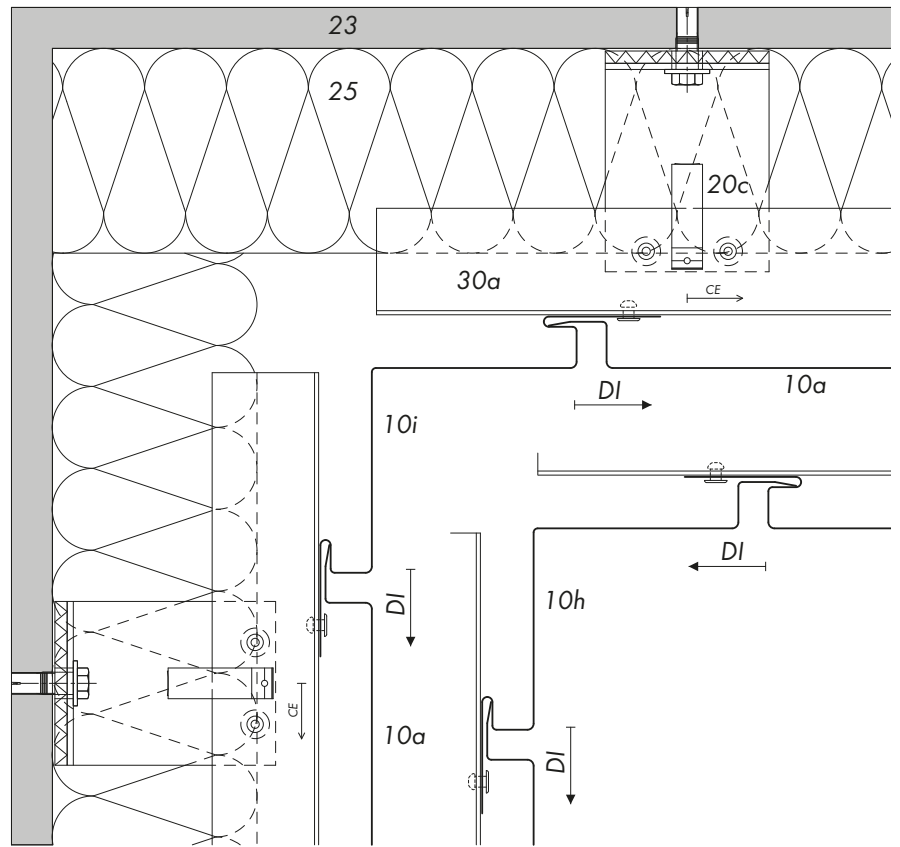
DI Direction of installation
CE Controlled expansion of substructure

* Manufacturers' guidelines must be complied with

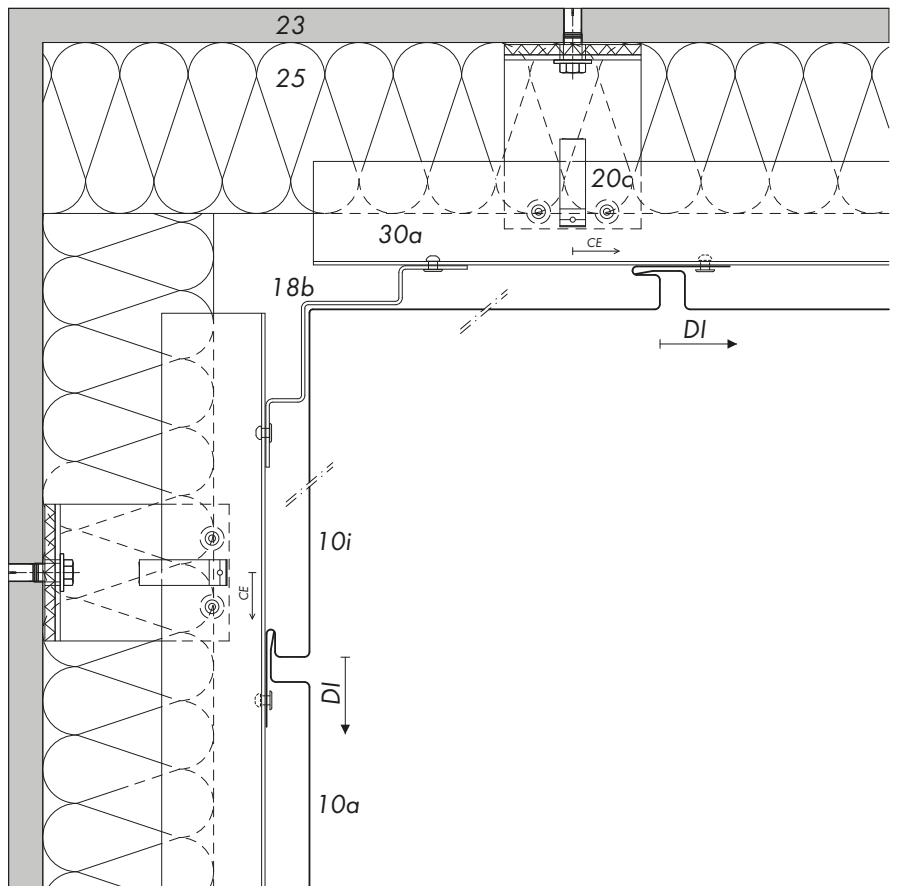
REVEAL PANELS, DESIGN AND APPLICATION

DESIGN – VERTICAL APPLICATION
DETAIL H2: INSIDE CORNER

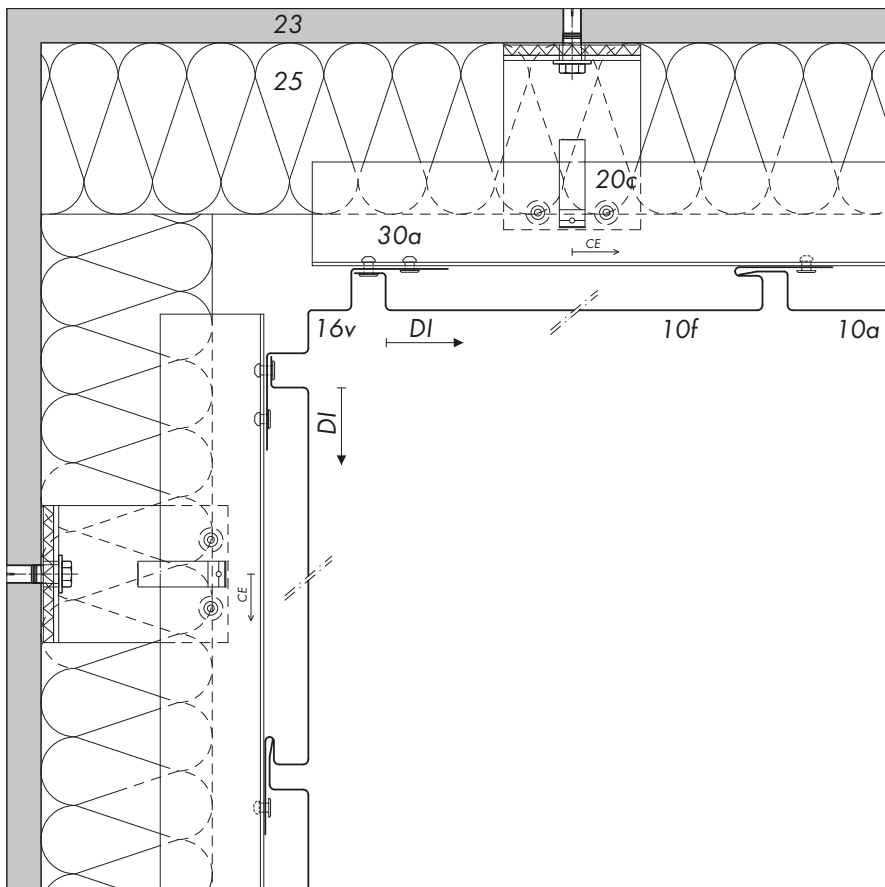
H2.1



H2.2



DESIGN – VERTICAL APPLICATION
DETAIL H2: INSIDE CORNER



H2.3

2.10.2 Detail H2: Inside Corner

- 10 RHEINZINK-Reveal Panel SF 25
 - a Standard panel
 - f Fitting panel
 - h Corner panel, groove-tongue
 - i Corner panel, groove-groove
- 16 RHEINZINK-Building Profile
 - v Corner profile
- 18 Support Profile
 - b Aluminium
- 20 Substructure
 - c Bracket system, with thermal break*
- 23 Supporting Structure
- 25 Thermal Insulation
- 30 Ventilated Air Space
 - a Depth of air space ≥ 20 mm

DI Direction of installation
CE Controlled expansion of substructure

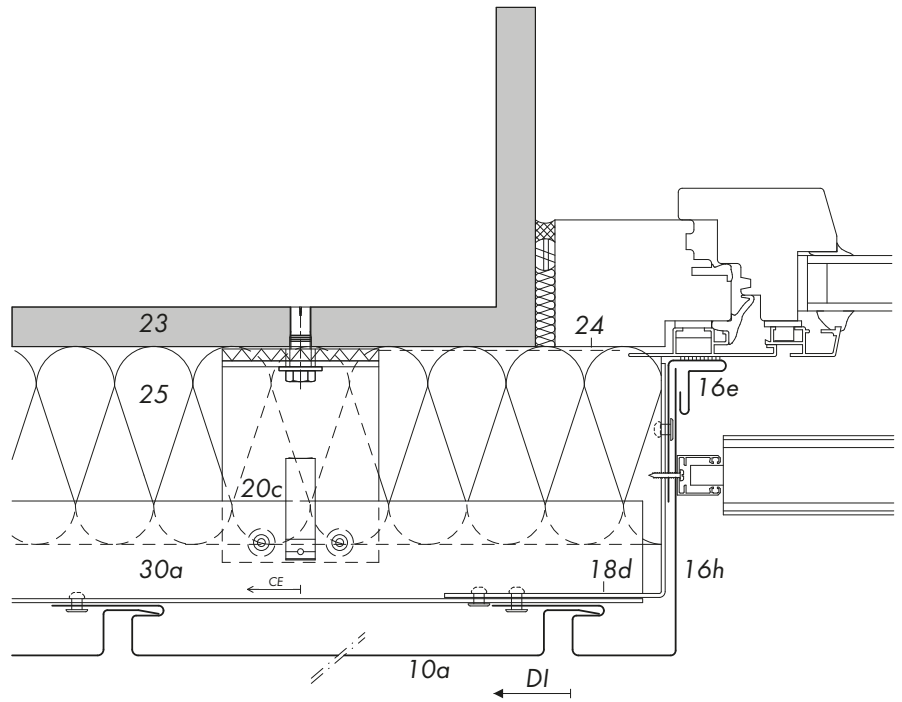
* Manufacturers' guidelines must be complied with

REVEAL PANELS, DESIGN AND APPLICATION

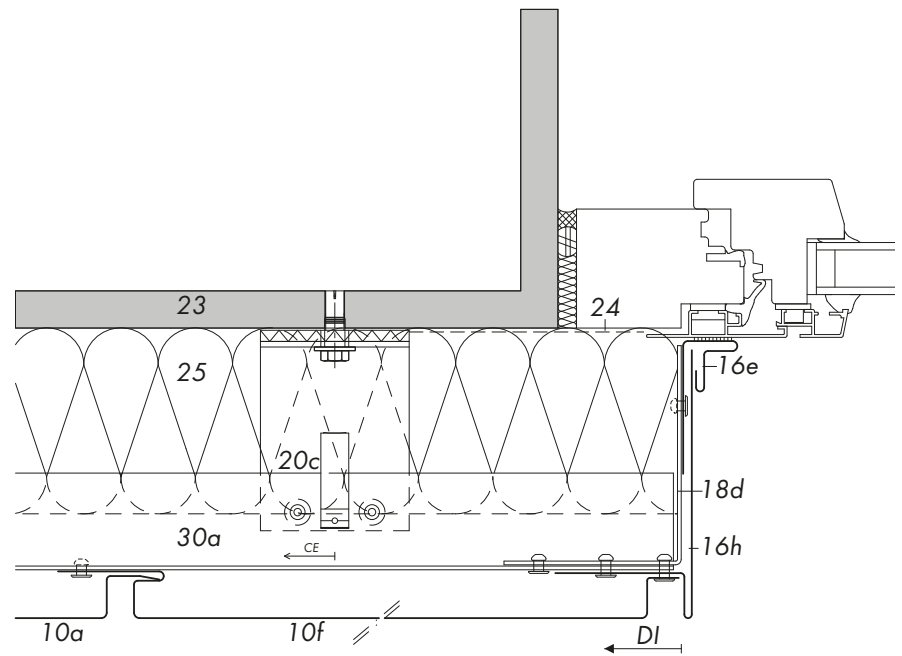
DESIGN – VERTICAL APPLICATION

DETAIL H3: WINDOW JAMB

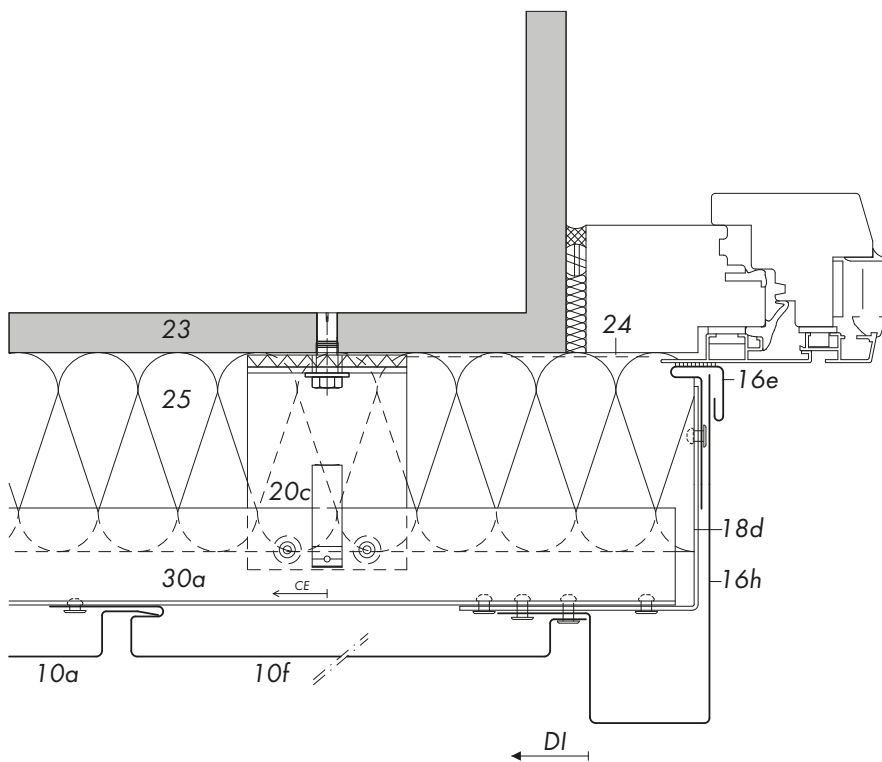
H3.1



H3.2



H3.3



2.10.3 Detail H3: Window jamb

- 10 RHEINZINK-Reveal Panel SF 25
 - a Standard panel
 - f Fitting panel
- 16 RHEINZINK-Building Profile
 - e Receiver strip, with sealant tape
 - h Jamb profile
- 18 Support Profile
 - d Aluminium*
- 20 Substructure
 - c Bracket system, with thermal break**
- 23 Supporting Structure
- 24 Window Foil
- 25 Thermal Insulation
- 30 Ventilated Air Space
 - a Depth of air space ≥ 20 mm

- DI Direction of installation
- CE Controlled expansion of substructure

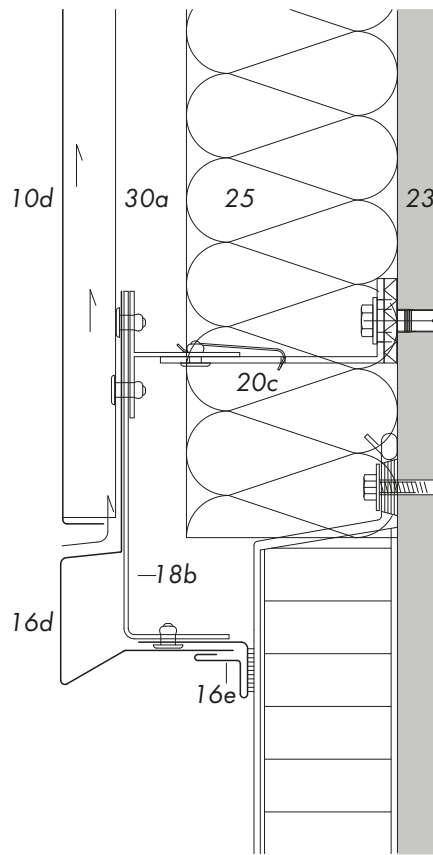
- * If fire breaks are required use galvanised steel ≥ 1 mm
- ** Manufacturers' guidelines must be complied with

REVEAL PANELS, DESIGN AND APPLICATION

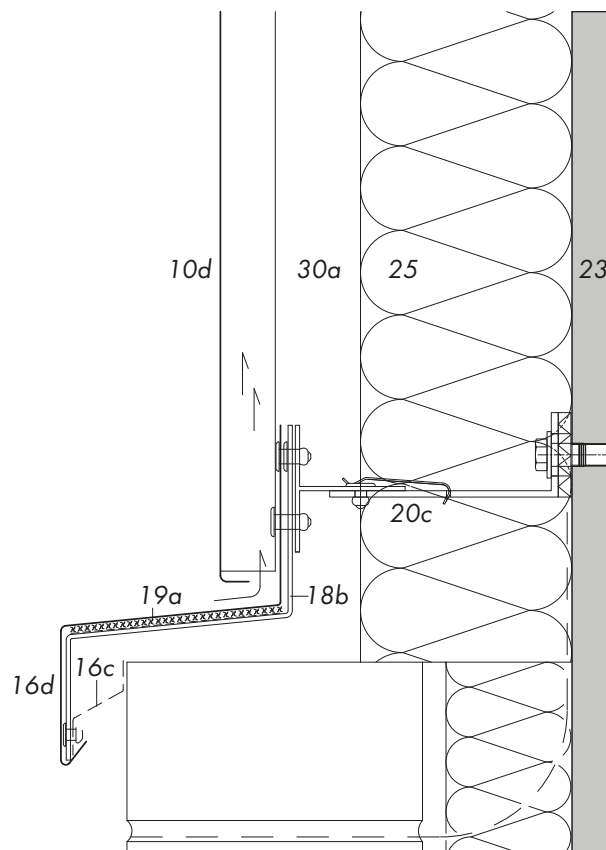
DESIGN – VERTICAL APPLICATION

DETAIL H4: EXPANSION JOINT

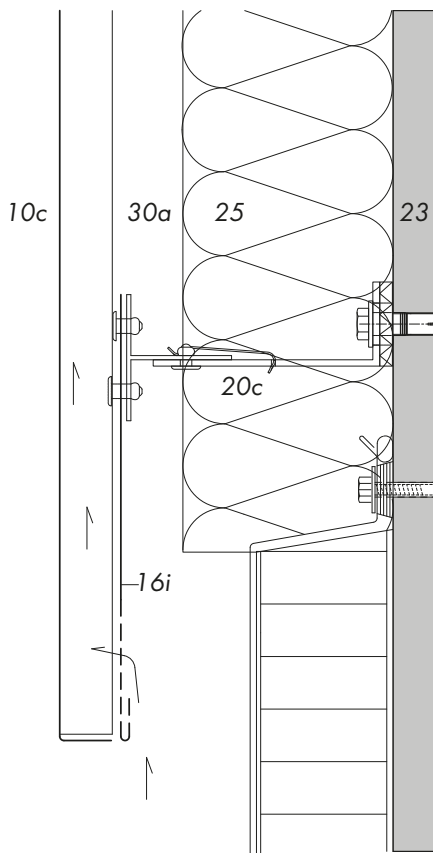
V1.1



V1.2



V1.3



2.10.4 Detail V1: Base

- 10 RHEINZINK-Reveal Panel SF 25
 - c Standard panel, with stopend
 - d Standard panel, with stopend short
- 16 RHEINZINK-Building Profile
 - c Perforated strip
 - d Base profile
 - e Receiver strip, with sealant tape
 - i Termination profile, partly perforated
- 18 Support Profile
 - b Aluminium
- 19 Separating Layer
 - a Structured underlay VAPOZINC
 - Alternative: glued to support profile over entire surface
- 20 Substructure
 - c Bracket system, with thermal break*
- 23 Supporting Structure
- 25 Thermal Insulation
- 30 Ventilated Air Space
 - a Depth of air space ≥ 20 mm

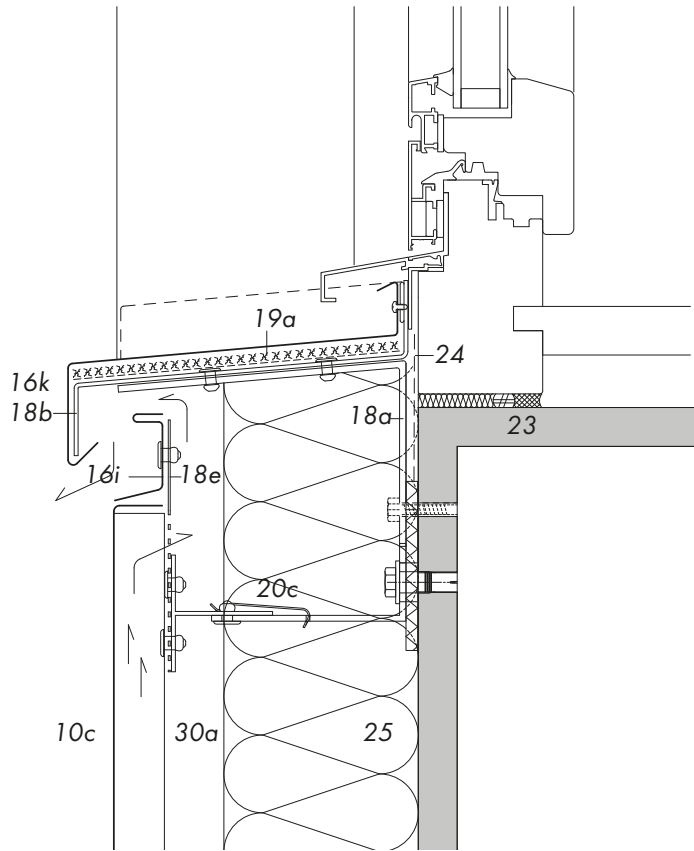
* Manufacturers' guidelines must be complied with

REVEAL PANELS, DESIGN AND APPLICATION

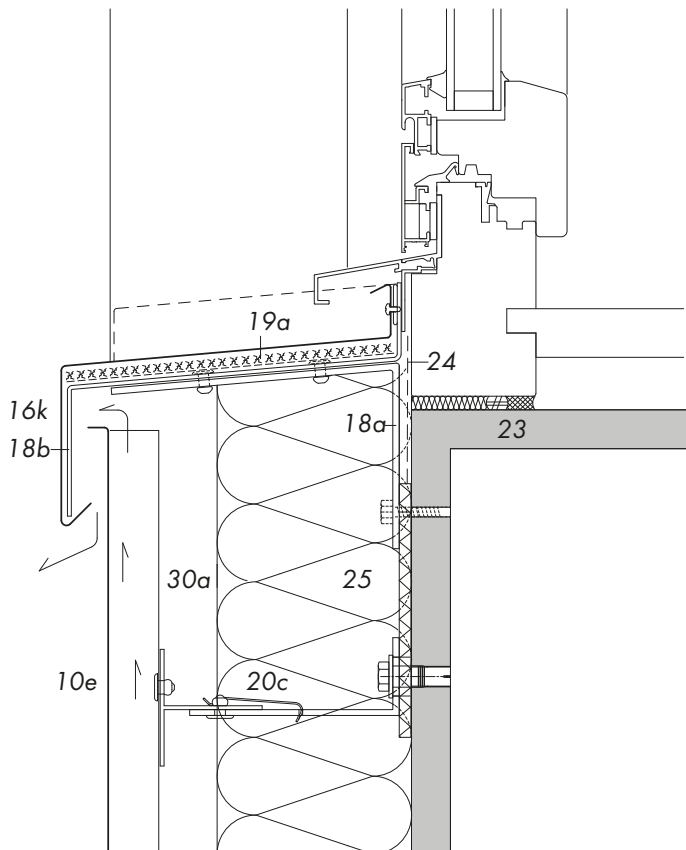
DESIGN – VERTICAL APPLICATION

DETAIL V1: BASE

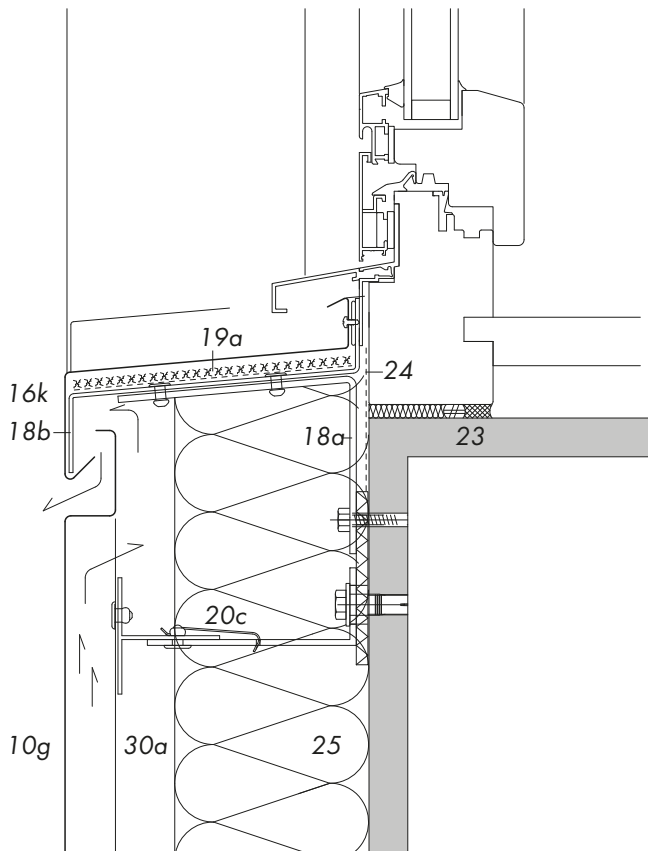
V2.1



V2.2



V2.3



2.10.5 Detail V2: Windowsill

- 10 RHEINZINK-Reveal Panel SF 25
 - c Standard panel, with stopend
 - e Standard panel, with stopend short, outward-facing
 - g Fitting panel, with bent up water drip
- 16 RHEINZINK-Building Profile
 - i Connection/termination profile
 - k Window sill coping
- 18 Support Profile
 - a Galvanised steel, support angle with thermal break
 - b Aluminium
 - e Aluminium, partly perforated
- 19 Separating Layer
 - a Structured underlay VAPOZINC
 - Alternative: glued to support profile over entire surface
- 20 Substructure
 - c Bracket system, with thermal break*
- 23 Supporting Structure
- 24 Window Foil
- 25 Thermal Insulation
- 30 Ventilated Air Space
 - a Depth of air space ≥ 20 mm

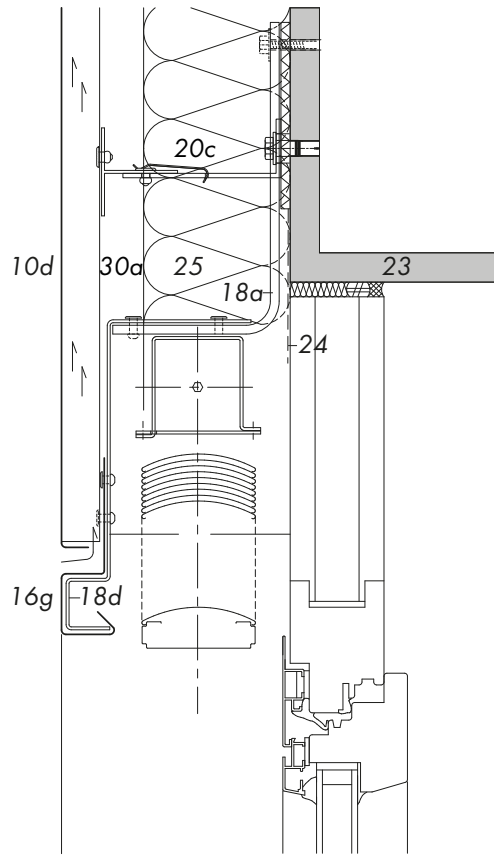
* Manufacturers' guidelines must be complied with

REVEAL PANELS, DESIGN AND APPLICATION

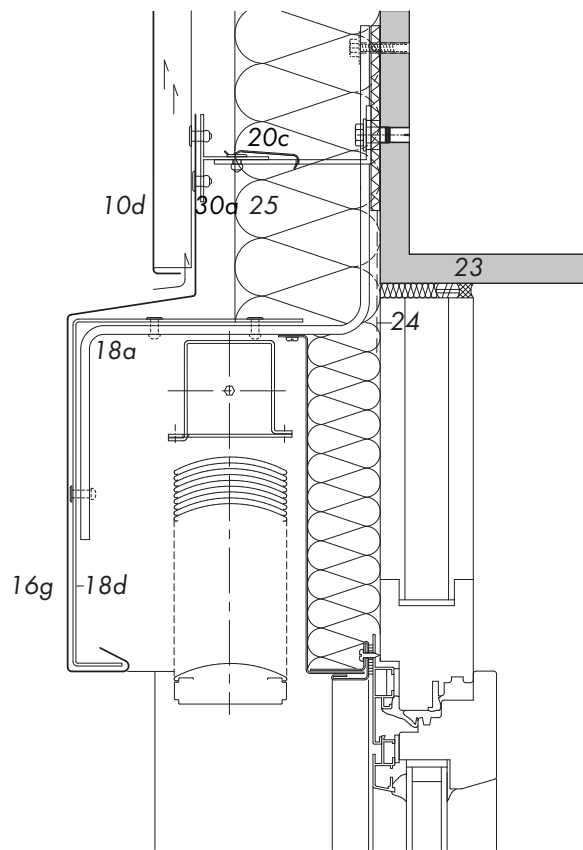
DESIGN – VERTICAL APPLICATION

DETAIL V2: WINDOWSILL

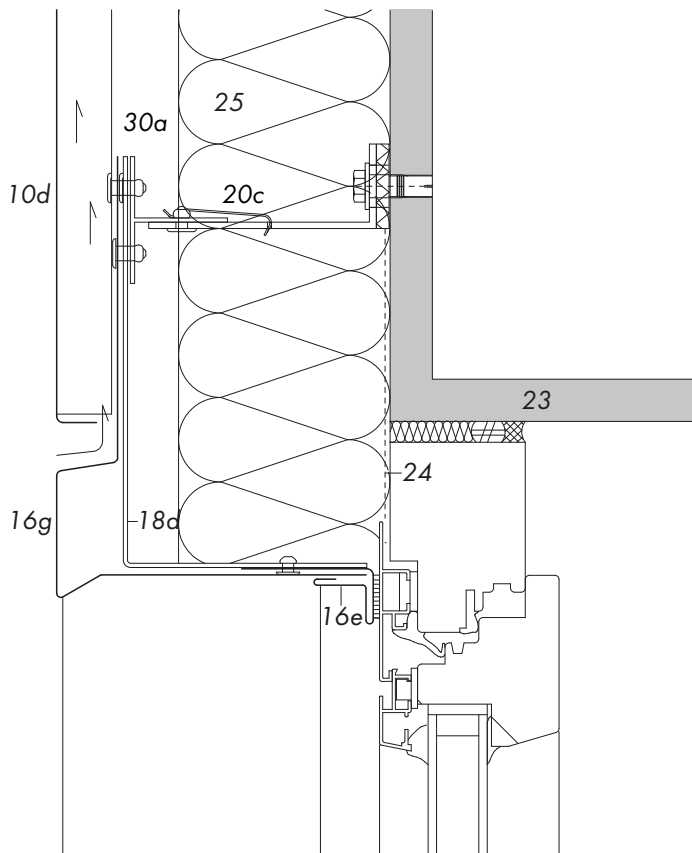
V3.1



V3.2



V3.3



2.10.6 Detail V3: Window lintel

- 10 RHEINZINK-Reveal Panel SF 25
 - d Standard panel, with stopend short
- 16 RHEINZINK-Building Profile
 - e Receiver strip, with sealant tape
 - g Lintel profile
- 18 Support Profile
 - a Galvanised steel, support profile with thermal break
 - d Aluminium *
- 20 Substructure
 - c Bracket system, with thermal break **
- 23 Supporting Structure
- 24 Window Foil
- 25 Thermal Insulation
- 30 Ventilated Air Space
 - a Depth of air space ≥ 20 mm

* If fire breaks are required use galvanized steel ≥ 1.0 mm.

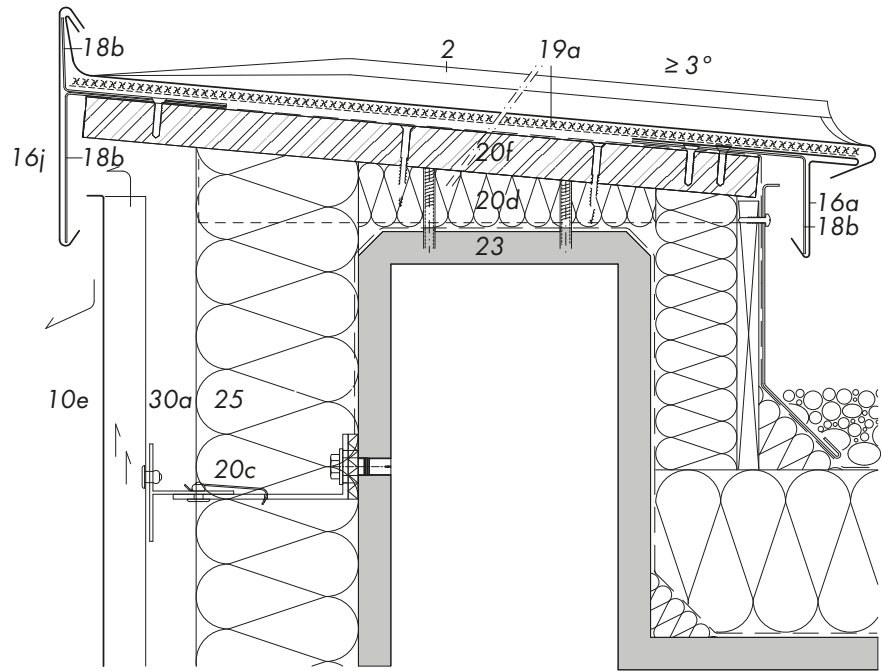
** Manufacturers' guidelines must be complied with

REVEAL PANELS, DESIGN AND APPLICATION

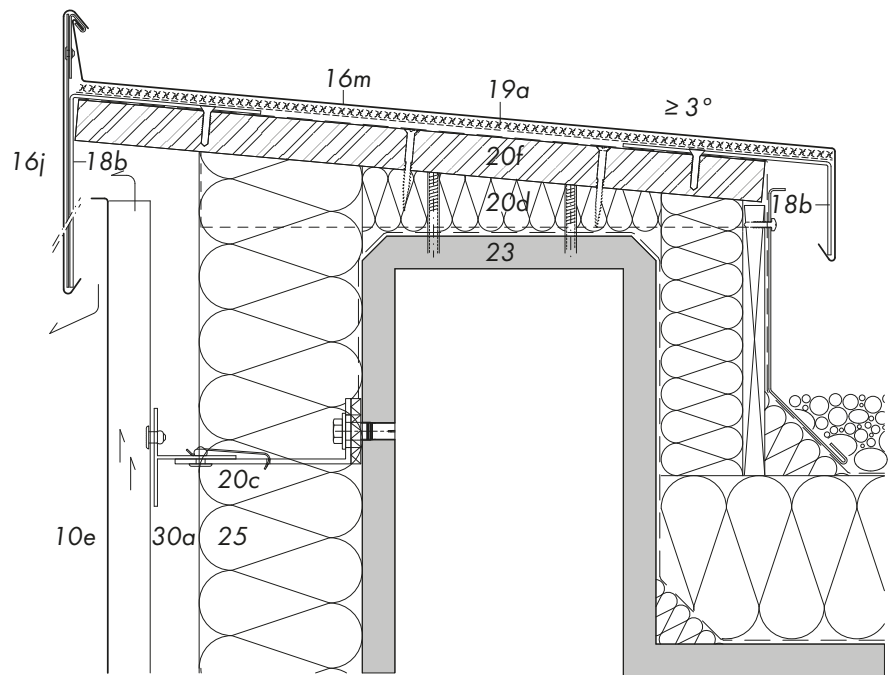
DESIGN – VERTICAL APPLICATION

DETAIL V3: WINDOW LINTEL

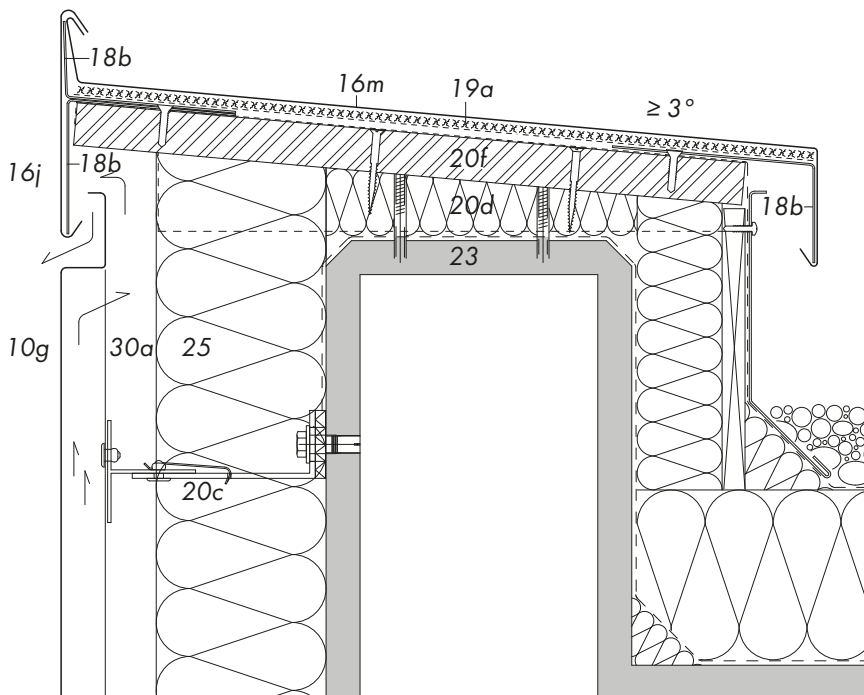
V4.1



V4.2



V4.3



2.10.7 Detail V4: Two-Part Roof Edge

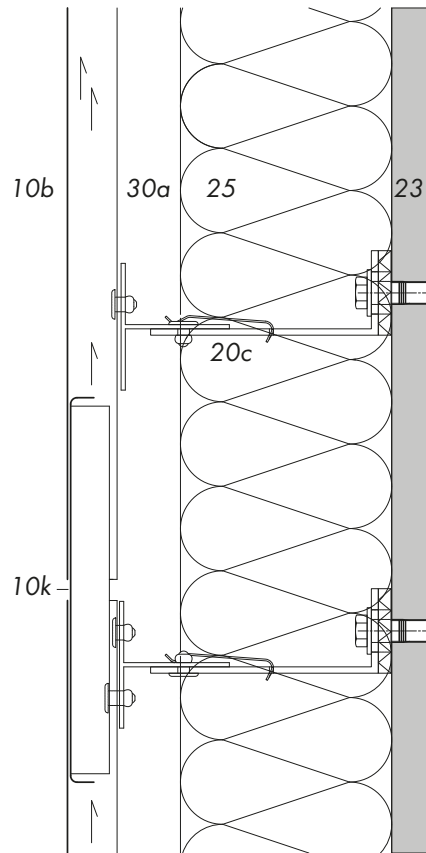
- 2 RHEINZINK-Double Standing Seam
- 10 RHEINZINK-Reveal Panel SF 25
 - e Standard panel, with stopend short, outward-facing
 - g Fitting panel, with bent up water drip
- 16 RHEINZINK-Building Profile
 - a Eaves flashing
 - j Fascia profile
 - m Wall coping
- 18 Support Profile
 - b Aluminium
- 19 Separating Layer
 - a Structured underlay VAPOZINC
 - Alternative: glued to support profile over entire surface
- 20 Substructure
 - c Bracket system, with thermal break*
 - d Wood, wedge board
 - f OSB/veneer plywood sheathing, thickness min. 22 mm
- 23 Supporting Structure
- 25 Thermal Insulation
- 30 Ventilated Air Space
 - a Depth of air space ≥ 20 mm

* Manufacturers' guidelines must be complied with

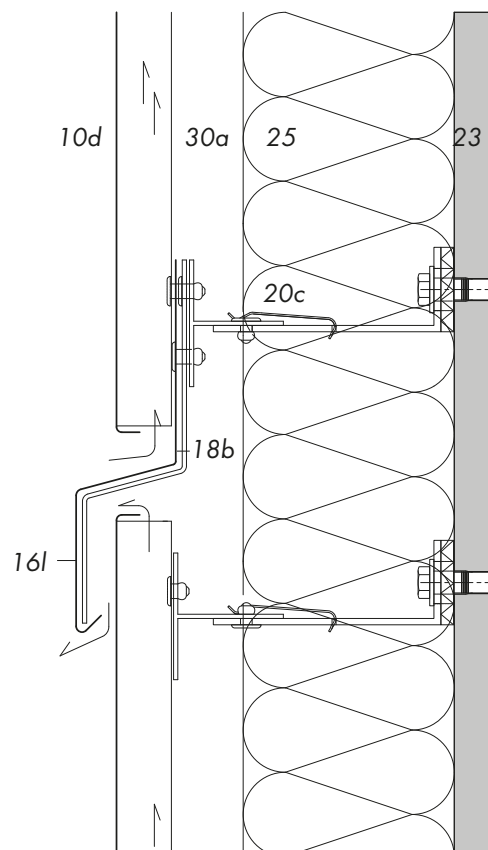
REVEAL PANELS, DESIGN AND APPLICATION

DESIGN – VERTICAL APPLICATION
DETAIL V4: TWO-PART ROOF EDGE

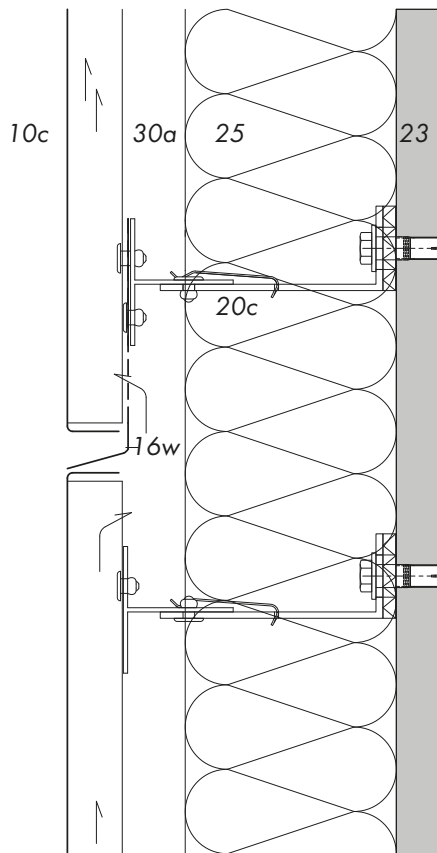
V5.1



V5.2



V5.3



2.10.8 Detail V5: Expansion Joint

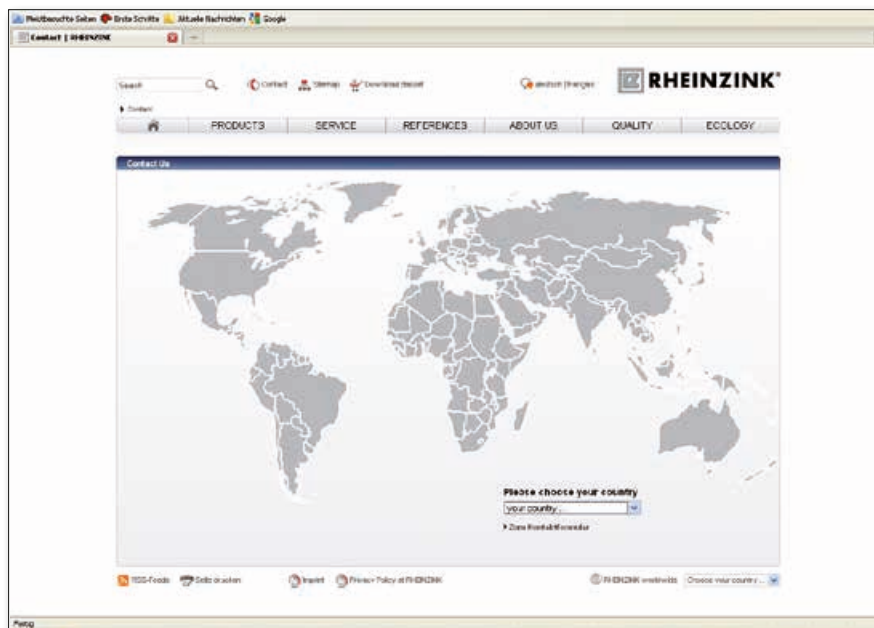
- 10 RHEINZINK-Reveal Panel SF 25
 - b Standard panel, without stopend
 - c Standard panel, with stopend
 - d Standard panel, with stopend short
 - k Slave profile, with stopends
- 16 RHEINZINK-Building Profile
 - l Cornice coping
 - w Shadow gap profile, partly perforated
- 18 Support Profile
 - b Aluminium
- 20 Substructure
 - c Bracket system, with thermal break*
- 23 Supporting Structure
- 25 Thermal Insulation
- 30 Ventilated Air Space
 - a Depth of air space ≥ 20 mm

* Manufacturers' guidelines must be complied with

CONTACT

Visit us online – www.rheinzink.com

We have made improvements to our website for you and adapted it to future requirements. Now you can find information about us and our material, RHEINZINK products and services even quicker. Clear structures and fast access take you directly to your destination. Regardless of whether you are interested in innovation, or are looking for references, reports, professional publications or dimension lists and standards. We are of course still available personally for you in future, all over the world.



Austria

RHEINZINK AUSTRIA GMBH
info@rheinzink.at

Belgium/Luxembourg

RHEINZINK BELUX S.A./N.V.
info@rheinzink.be

China/Asia-Pacific

RHEINZINK Zinc
Manufacturing
(Shanghai) Co., Ltd.
info@rheinzink.sh.cn

Czech Republic

RHEINZINK ČR s.r.o.
info@rheinzink.cz

Denmark

RHEINZINK Danmark A/S
info@rheinzink.dk

Estonia/Latvia/Lithuania

RHEINZINK Balticum Office
info@rheinzink.lv

France

RHEINZINK FRANCE
contact@rheinzink.fr

Germany

RHEINZINK GmbH & Co. KG
info@rheinzink.de

Hungary

RHEINZINK Hungaria Kft.
info@rheinzink.hu

Italy

RHEINZINK Italia S.R.L.
info@rheinzink.it

Netherlands

RHEINZINK Nederland
Wentzel B.V.
info@rheinzink.nl

Norway

RHEINZINK Norge
info@rheinzink.no

Poland

RHEINZINK Polska Sp. z o.o.
info@rheinzink.pl

Romania

RHEINZINK RO
info@rheinzink.ro

Russia

OOO RHEINZINK
info@rheinzink.ru

Slovak Republic

RHEINZINK SK s.r.o.
info@rheinzink.sk

South Africa/Sub-Saharan Africa

RHEINZINK South Africa
info@rheinzink.co.za

Spain/Portugal

RHEINZINK Ibérica S.L.U.
info@rheinzink.es

Sweden/Finland

RHEINZINK Sverige
info@rheinzink.se

Switzerland

RHEINZINK (Schweiz) AG
info@rheinzink.ch

Turkey/Central Asia & Middle East

RHEINZINK Türkiye
info@rheinzink.com.tr

United Kingdom

RHEINZINK U.K.
info@rheinzink.co.uk

USA/Canada/Mexico

RHEINZINK America, Inc.
info@rheinzink.us



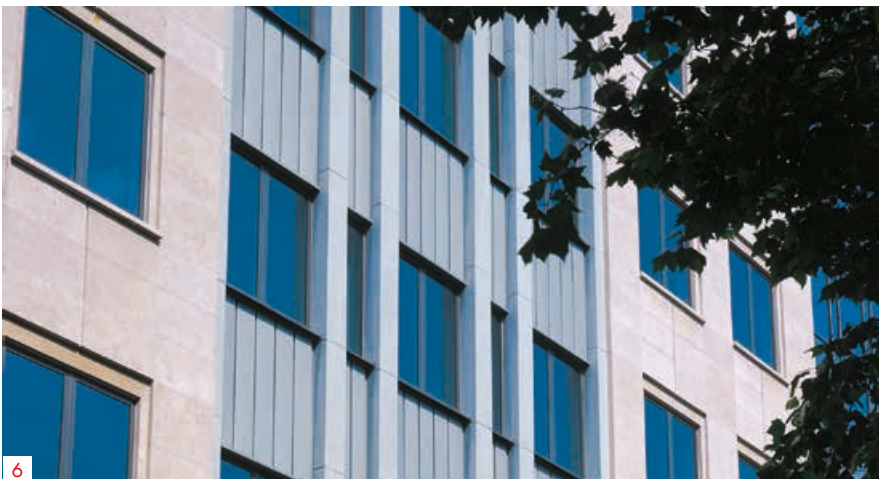
REVEAL PANELS, DESIGN AND APPLICATION

REFERENCE PROJECTS





5



6

For other project references,
please see
www.rheinzink.com



REVEAL PANELS, DESIGN AND APPLICATION

ILLUSTRATIONS

Titel: Universität Nottingham, Business School, Nottingham, Great Britain

Architect: Michael Hopkins & Partners, London, Großbritannien

RHEINZINK work implemented by:

Carlton Building Services Ltd., Bolton, Großbritannien

1. Airport, Bydgoszcz, Polen

Architects: Pracownia Architektoniczna Arus sp. z o.o.,

Bydgoszcz, Poland

RHEINZINK work implemented by:

F.H.U. Budownictwa Krest, Niepołomice, Poland

2./3. Columbarium, De Nieuwe Ooster Begraafplaats, Amsterdam, Netherlands

Architect: Karres en Brands landschapsarchitecten, Hilversum, Netherlands

RHEINZINK work implemented by:

Loodgietersbedrijf C.J. Ockeloen v.o.f., Amsterdam, Netherlands

4. Mt. Druitt Court House, Sydney, Australia

Architect: Perumal Pedavoli Pty Ltd., Ultimo, Australia

RHEINZINK work implemented by:

Perumal Pedavoli Pty Ltd., Hornsby, Australia

5. CargoLifter Werft, Briesen-Brand, Germany

Architect: SIAT Architektur + Technik, Munich, Germany

SIAT Bauplanung und Ingenieurleistungen GmbH & Co. OHG

RHEINZINK work implemented by:

Thale Metallbedachung Bauklempnerei, Lingen/Ems, Germany

6. Artemis Square, Brüssel, Belgium

Architect: De Borman + Gerard, Brussels, Belgium

RHEINZINK work implemented by:

Platteau Dakwerken, Deurne, Belgium



RHEINZINK GmbH & Co. KG
Postfach 1452
45705 Datteln
Germany

Tel.: +49 2363 605-0
Fax: +49 2363 605-209

info@rheinzink.de
www.rheinzink.com