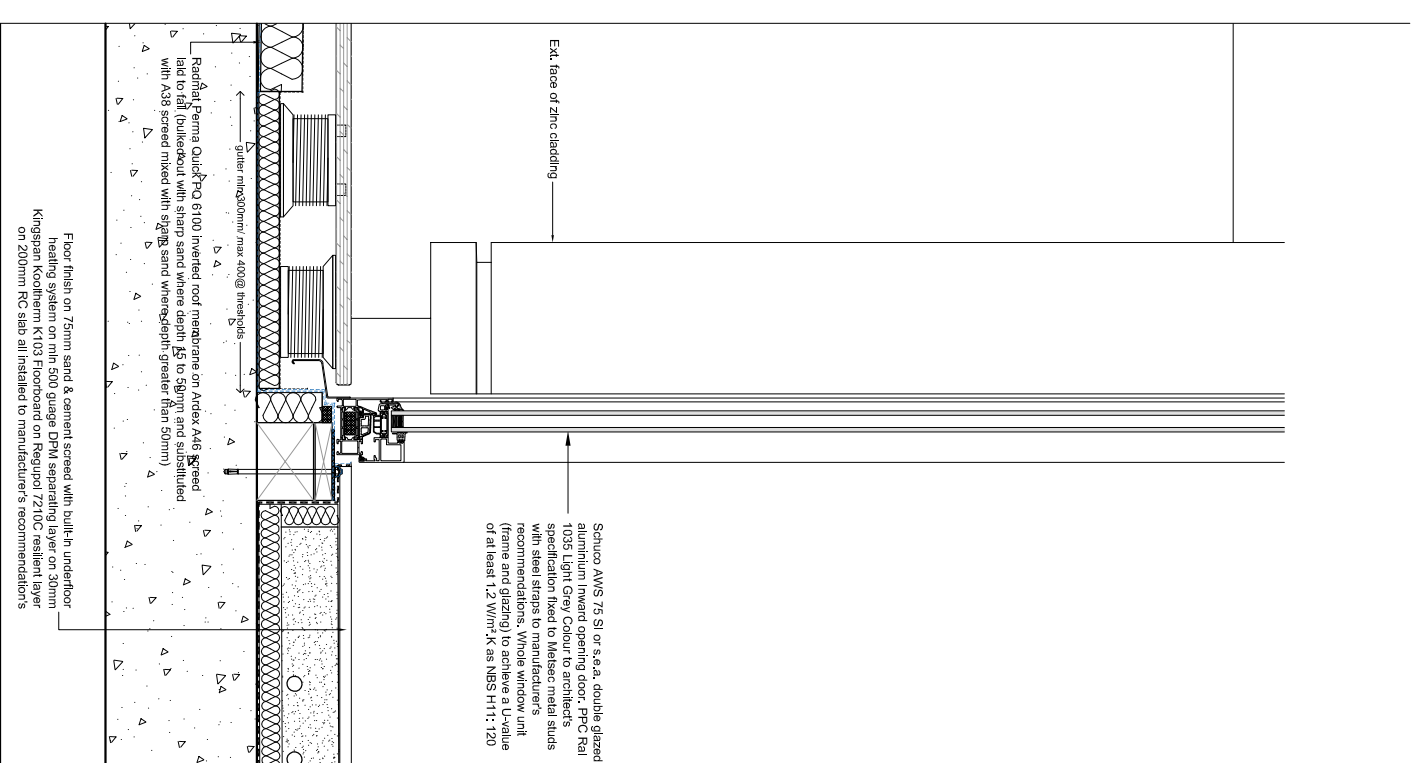
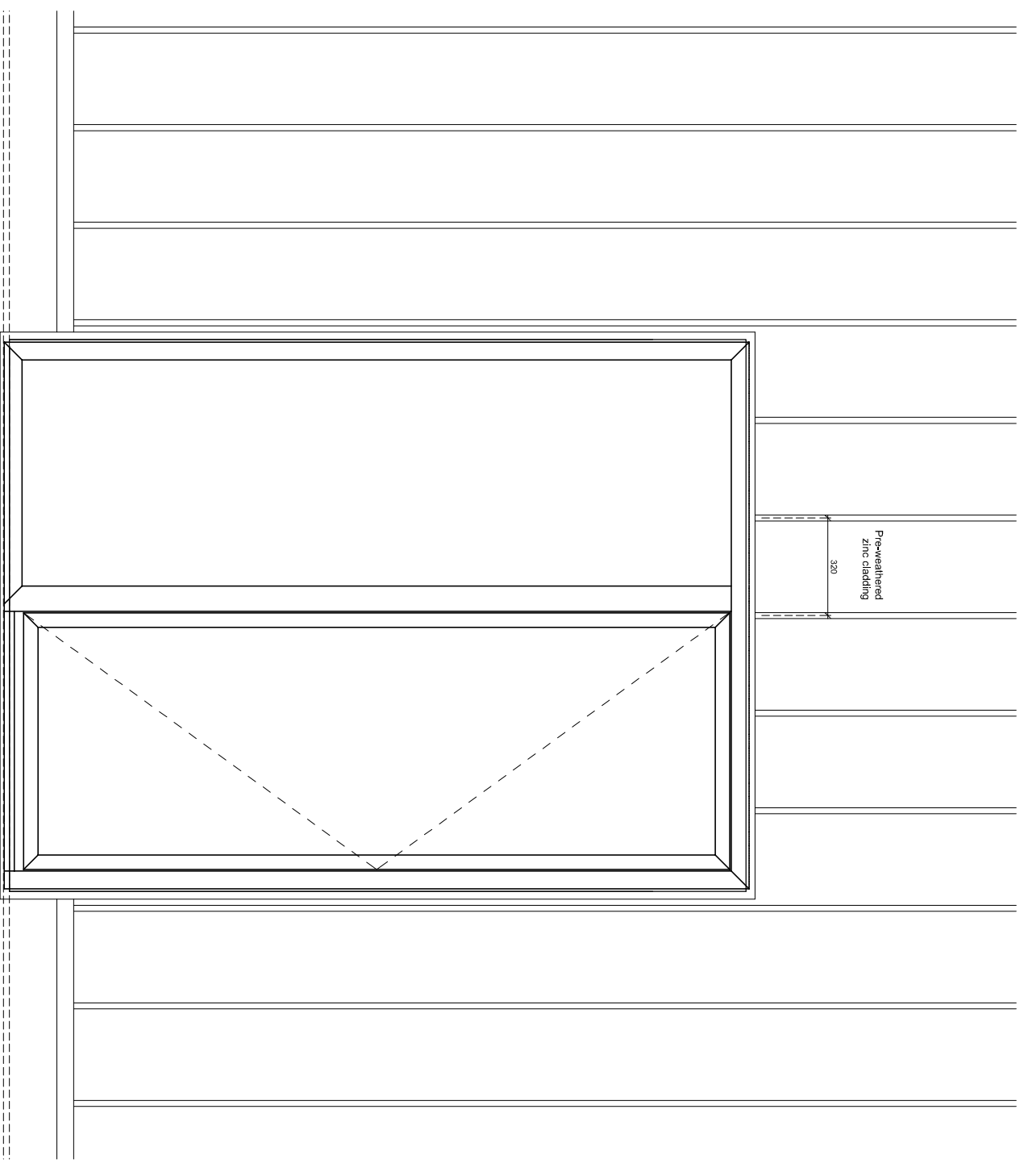


Schuco AWS 75 SI or s.e.a. double glazed aluminium inward opening door: PFC-Rail fixed to wall with steel straps to manufacturer's specifications fixed to Maselec metal studs with steel straps to manufacturer's recommendations. Whole window unit (frame and glazing) to achieve a U-value of at least 1.2 W/m².K as NBS H11: 120



Schuco AWS 75 SI or s.e.a. double glazed aluminium inward opening door: PFC-Rail 1035 Light Grey Colour to architect's specification fixed to Maselec metal studs with steel straps to manufacturer's recommendations. Whole window unit (frame and glazing) to achieve a U-value of at least 1.2 W/m².K as NBS H11: 120

Floor finish on 75mm sand & cement screed with built-in underfloor heating system on in 500 gauge DPC separating layer on 50mm Kiepermat 1000 on 200mm RC slab all installed to manufacturer's recommendations



Elevation - Scale 1:20@A3

PLANNING

THIS DRAWING IS NOT TO BE SCALED. ONLY DIMENSIONS ARE TO BE FOLLOWED. UNLESS THE DRAWING IS PART OF A PLANNING APPLICATION, CONTRACTORS ARE TO CHECK ALL DIMENSIONS BEFORE WORK COMMENCES AND REFER ANY APPARENT DISCREPANCY TO THE ARCHITECT.
THIS DRAWING IS THE SOLE PROPERTY OF M/R PARTNERSHIP LIMITED, AND MAY NOT BE COPIED OR REPRODUCED IN ANY MANNER WHATSOEVER WITHOUT THE OWNERS WRITTEN CONSENT.
(c) COPYRIGHT.

PROJECT 254 Kilburn High Road
London NW6 2BS

DRAWING 5th Floor
Window_Terrace Detail

M/R PARTNERSHIP LTD

MRP

41 Foley Street, London W1W 7TS Tel: (020) 7631 5405 Email:
info@mpartnership.co.uk Web: www.mpartnership.co.uk

DATE: 02/02/18 SCALE: 1:5@A1 DRAWN: DA
DWG No: 3144_039 REV. No:

FILE: 3144_039 Metal Balustrade Balcony Parapet Detail Win Window.dwg