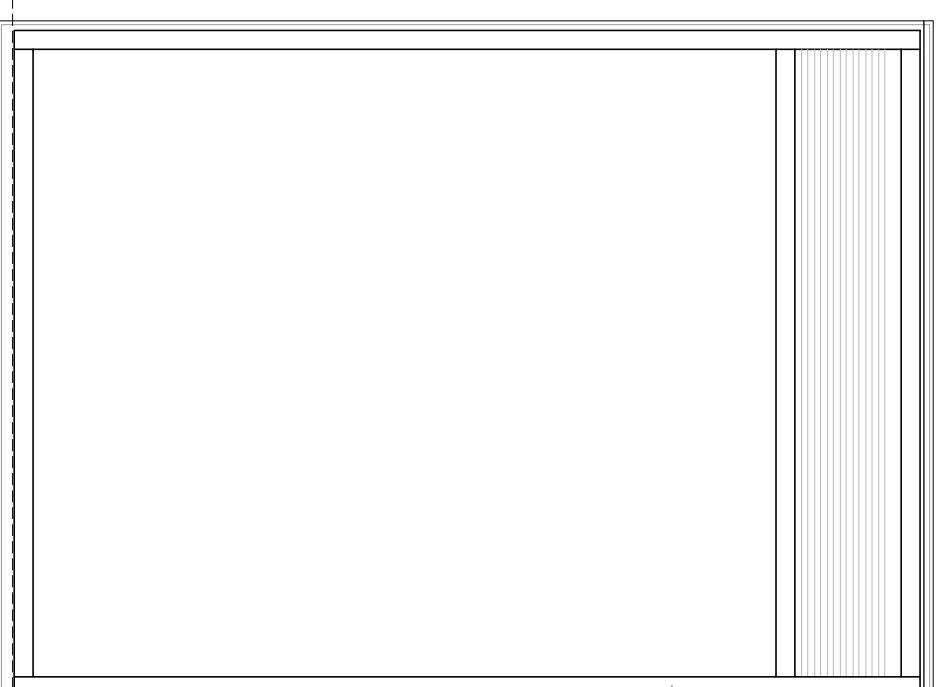


Elevation - Scale 1:20@A3



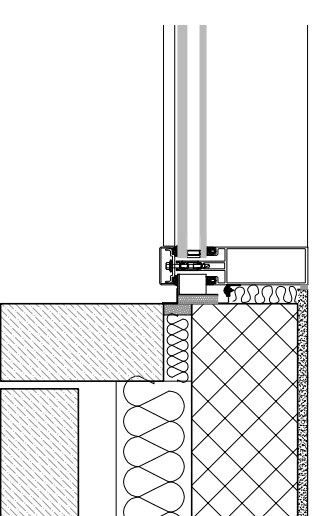
Schuco AWS 75 BS.HI or s.e.a. double glazed aluminium screen anodised Anodok Bronze colour to architect's specification. Whole window unit (frame and glazing) to achieve a U-value of at least 1.2 W/m².K as NBS H11: 120

Steel fixing straps and EPDM to manufacturer's recommendation

Mullion fixed to base bracket with 2 No. M10 St. Steel bolts. Base transform to have suitable notches to allow fitting.

Floor finish on 75mm sand & cement screed with built-in underfloor heating system on min 500 gauge DPM separating layer on 30mm Kingspan Kooltherm K103 Floorboard on Reputol 7210C resilient layer on 200mm RC slab all installed to manufacturer's recommendation's

Schuco AWS 75 BS.HI or s.e.a. double glazed aluminium inward opening doors anodised Anodok Bronze colour to architect's specification fixed to Meisec metal studs with steel straps to manufacturer's recommendations. Whole window unit (frame and glazing) to achieve a U-value of at least 1.2 W/m².K as NBS H11: 120



Commercial Window Head & Base Detail - Scale 1:10@A3

Jamb Detail - Scale 1:10@A3

PLANNING

THIS DRAWING IS NOT TO BE SCALED. ONLY DIMENSIONS ARE TO BE FOLLOWED (UNLESS THE DRAWING IS PART OF A PLANNING APPLICATION). CONTRACTORS ARE TO CHECK ALL DIMENSIONS BEFORE WORK COMMENCES, AND REFER ANY APPARENT DISCREPANCY TO THE ARCHITECT.

THIS DRAWING IS THE SOLE PROPERTY OF M/R PARTNERSHIP LIMITED, AND MAY NOT BE COPIED OR REPRODUCED IN ANY MANNER WHATSOEVER WITHOUT THE OWNERS WRITTEN CONSENT. © COPYRIGHT.

PROJECT 254 Kilburn High Road
London NW6 2BS

DRAWING Ground Floor
Commercial Window Detail

M/R PARTNERSHIP LTD

41 Foley Street, London W1W 7TS Tel: (020) 7631 5406 Email: info@mrapartnership.co.uk Web: www.mrapartnership.co.uk

DATE: 05/02/18 SCALE: 1:5@A1 DRAWN: DA

DWG No: 3144_041

FILE: 3144_041_SJOP FRONT DETAIL.dwg