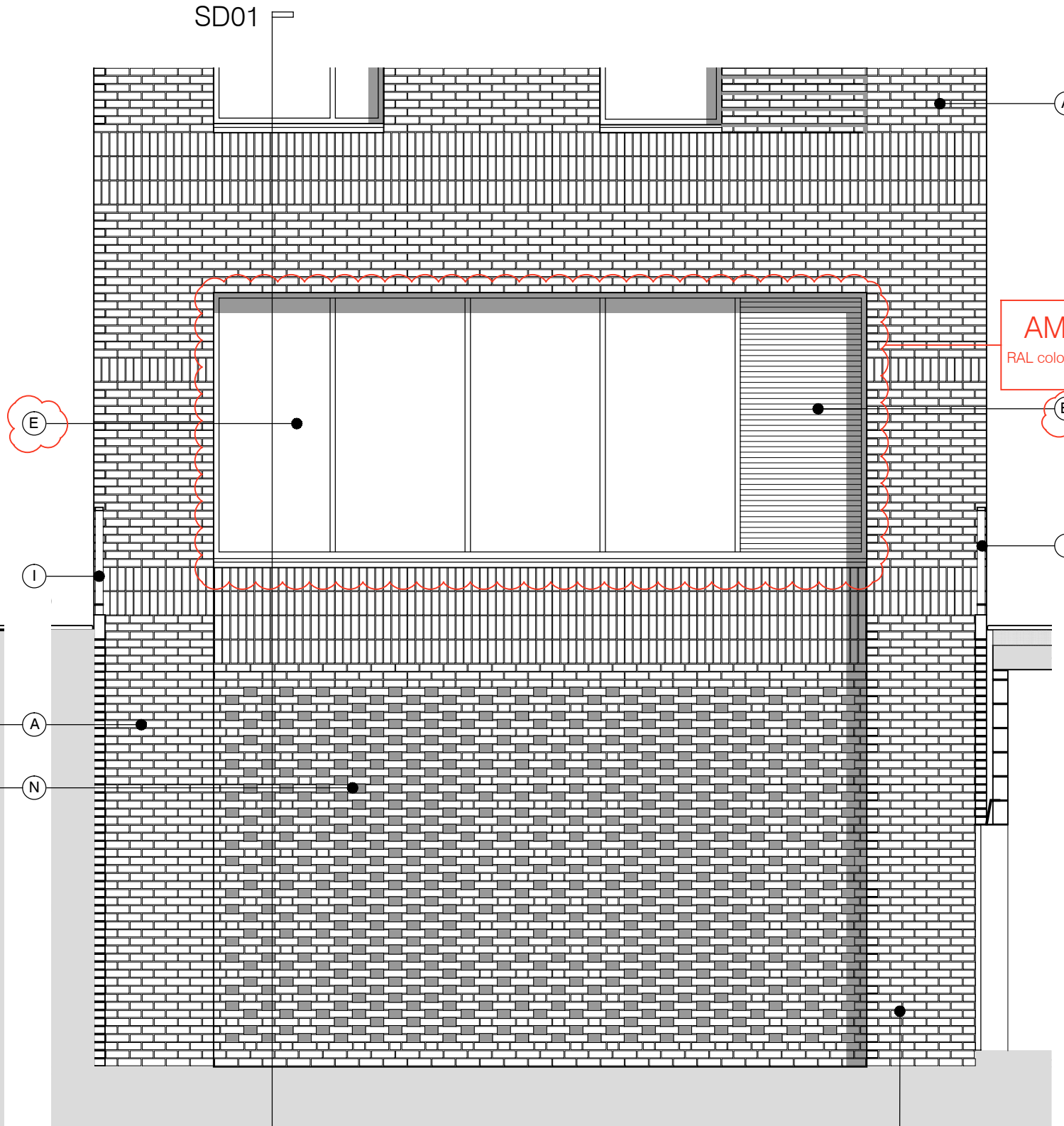
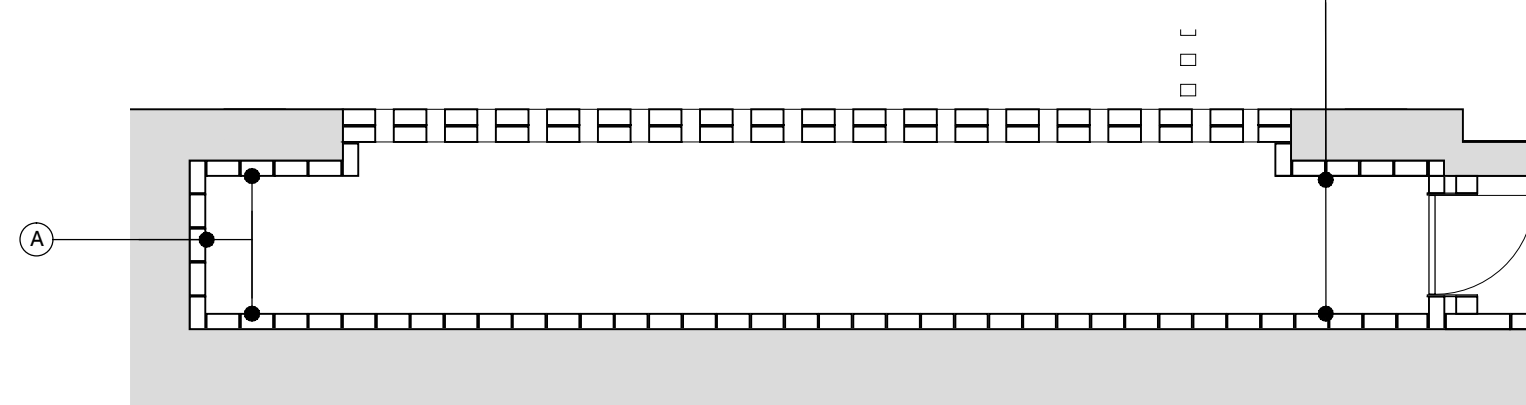


SECTION DETAIL 01



ELEVATION



PLAN

MATERIAL KEY

A - Brick work type 1: Red brick, stretcher bond brickwork with Cemex London White mortar or similar. Openings to have a deep brick reveal (approx 190mm unless stated otherwise).

B - Brick work type 2: Reflective blue/purple brick, but darker than Type 1, stretcher bond brickwork with Cemex London White mortar or similar. Allow for darker mortar to recessed brick walls. Openings to have a deep brick reveal (approx 190mm unless stated otherwise).

E - Shop front frameless glass curtain walling with 75mm aluminum capping at base, RAL colour finish aluminum framed double or triple glazed doors to match. Louvred panels to be same finish.

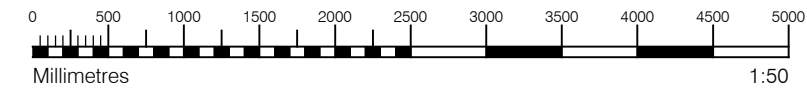
F - Windows / doors: RAL colour finish aluminum framed double or triple glazed units (manufacturer to be agreed).

I - Metal Railing Balustrade: formed from PPC vertical flats (approx 50 x 12mm)

N - Hit and miss brickwork wall to basement cycle store - free area to meet ventilation requirements to basement

Y - Brick work type 2: Slightly recessed brick wall with stepped brick coursing

For specification, refer to drawing PL 001-Rev B included within this Section 73 application



S73 APPLICATION

C 28.04.17 Section 73 issued to planning. DS DPD

C 31.03.17 Amendment references added. Material key updated. Issued to Wates prior to planning submission. DS DB

B 21.06.16 Section 73 issued to planning. EN DPD

| rev. | date | notes | drn | aud |
|------|------|-------|-----|-----|
| | | | | |

drawing status: **PLANNING**

Diespeker Wharf
38 Graham Street
London N1 8JX



t: 020 7336 7777 w: www.ptea.co.uk
f: 020 7336 0770 e: forename.surname@ptea.co.uk

| project | job.no. | drawn | audited | scale | date |
|--|---------|-------|---------|---------|--------|
| ABBEY AREA REGENERATION-PHASE 1 LONDON | 12_510 | EG | DPD | 1:50@A3 | JUL 13 |

| dwg title | orig. no. | rev |
|------------------|--------------|-----|
| VENTILATION VOID | 510_1_PL_410 | C |