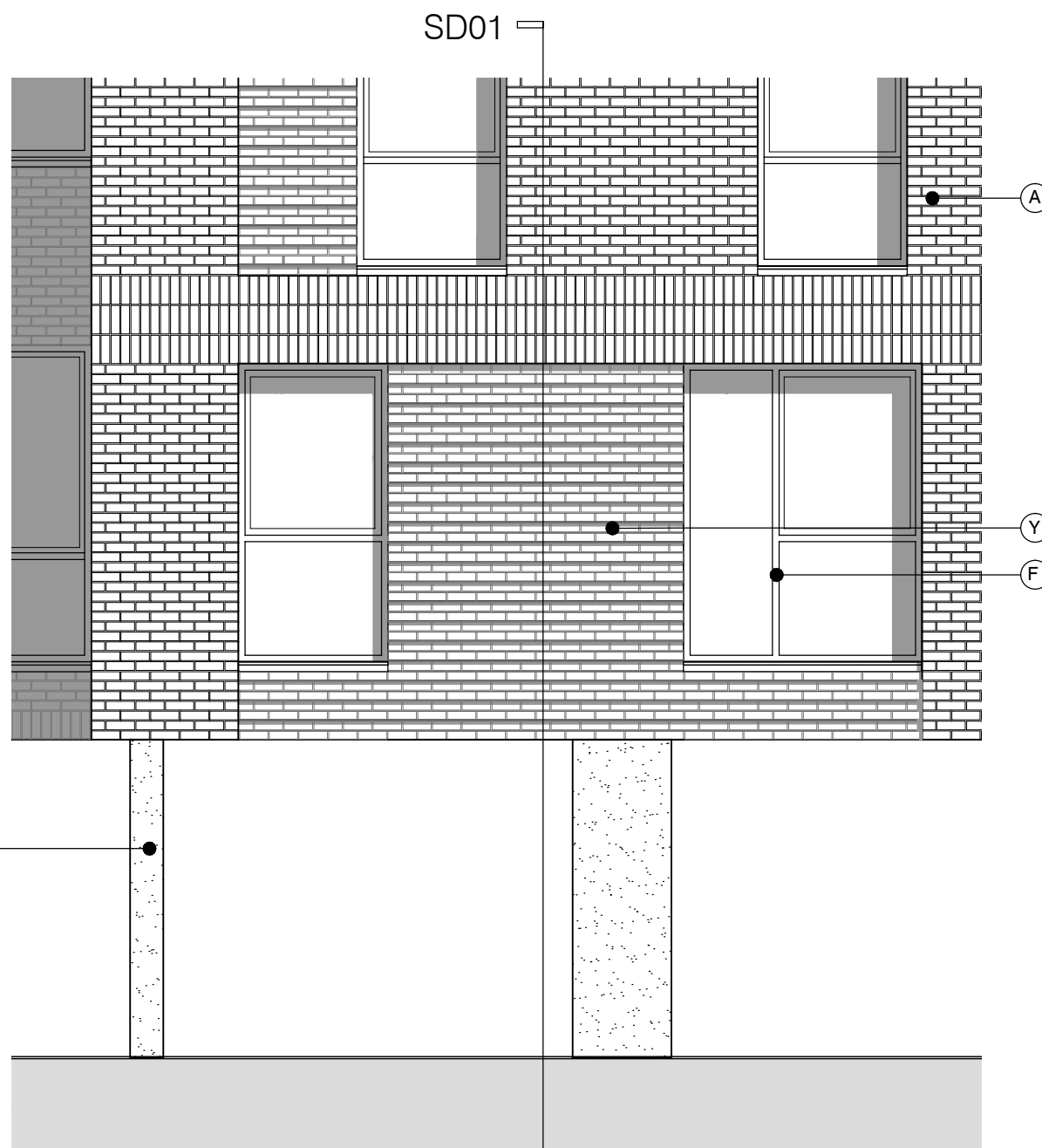
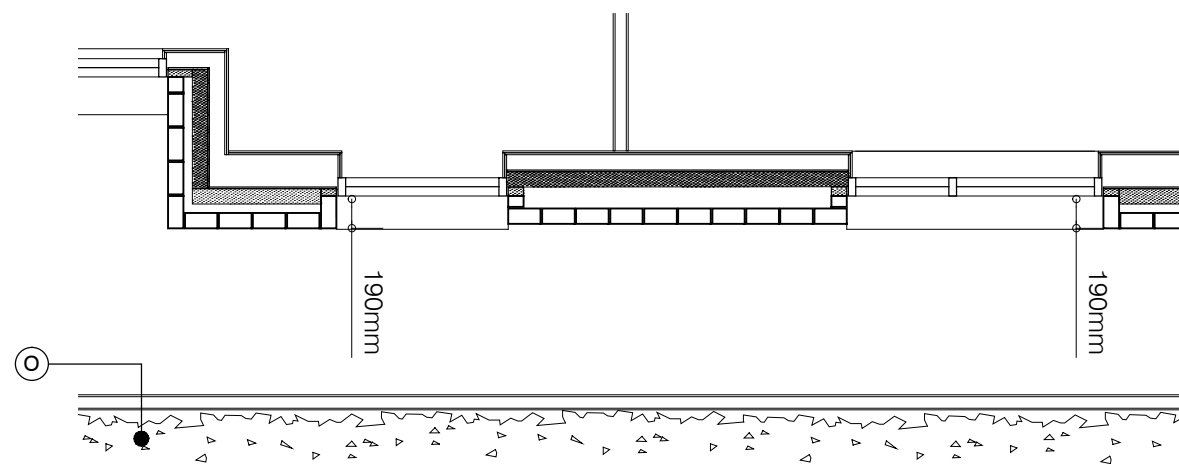


SECTION DETAIL 01



ELEVATION

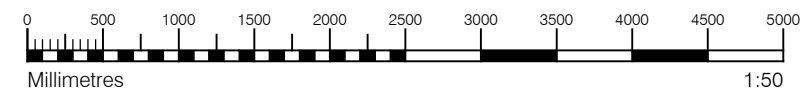


PLAN

MATERIAL KEY

- A** - Brick work type 1: Red brick, stretcher bond brickwork with Cemex London White mortar or similar. Openings to have a deep brick reveal (approx 190mm unless stated otherwise).
- B** - Brick work type 2: Reflective blue/purple brick, but darker than Type 1, stretcher bond brickwork with Cemex London White mortar or similar. Allow for darker mortar to recessed brick walls. Openings to have a deep brick reveal (approx 190mm unless stated otherwise).
- D** - Metal panel: RAL colour finish panels with hidden fixings and minimal joints.
- F** - Windows / doors: RAL colour finish aluminum framed double or triple glazed units (manufacturer to be agreed).
- I** - Metal Railing Balustrade: formed from PPC vertical flats (approx 50 x 12mm)
- O** - 1.2 m high Fagus sylvatica (beech) instant hedge planted in a double staggered row
- Y** - Brick work type 2: Slightly recessed brick wall with stepped brick coursing
- X** - Exposed concrete structure in basement car park

For specification, refer to drawing PL 001-Rev B included within this Section 73 application



S73 APPLICATION											
C 28.04.17 Section 73 issued to planning.						DS DPD					
C 31.03.17 Amendment references added. Material key updated. Issued to Wates prior to planning submission.						DS DB					
B 21.06.16 Section 73 issued to planning.						EN DPD					
rev.	date	notes				drn aud					
drawing status: PLANNING											
Diespeker Wharf 38 Graham Street London N1 8JX											
t: 020 7336 7777		w: www.ptea.co.uk									
f: 020 7336 0770		e: forename.surname@ptea.co.uk									
project	ABBEY AREA REGENERATION-PHASE 1 LONDON	job.no.	12_510	drawn	EG	audited	DPD	scale	1:50@A3	date	JUL 13
dwg title	GROUND LEVEL/CARPARK BELSIZE ROAD		orig. no.	510_1_PL_408		rev	C				