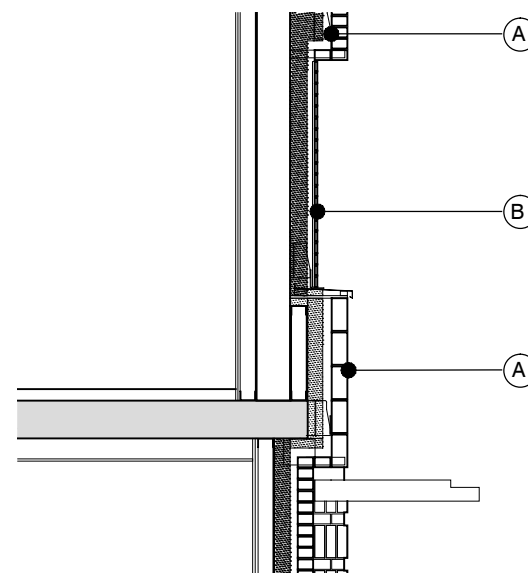
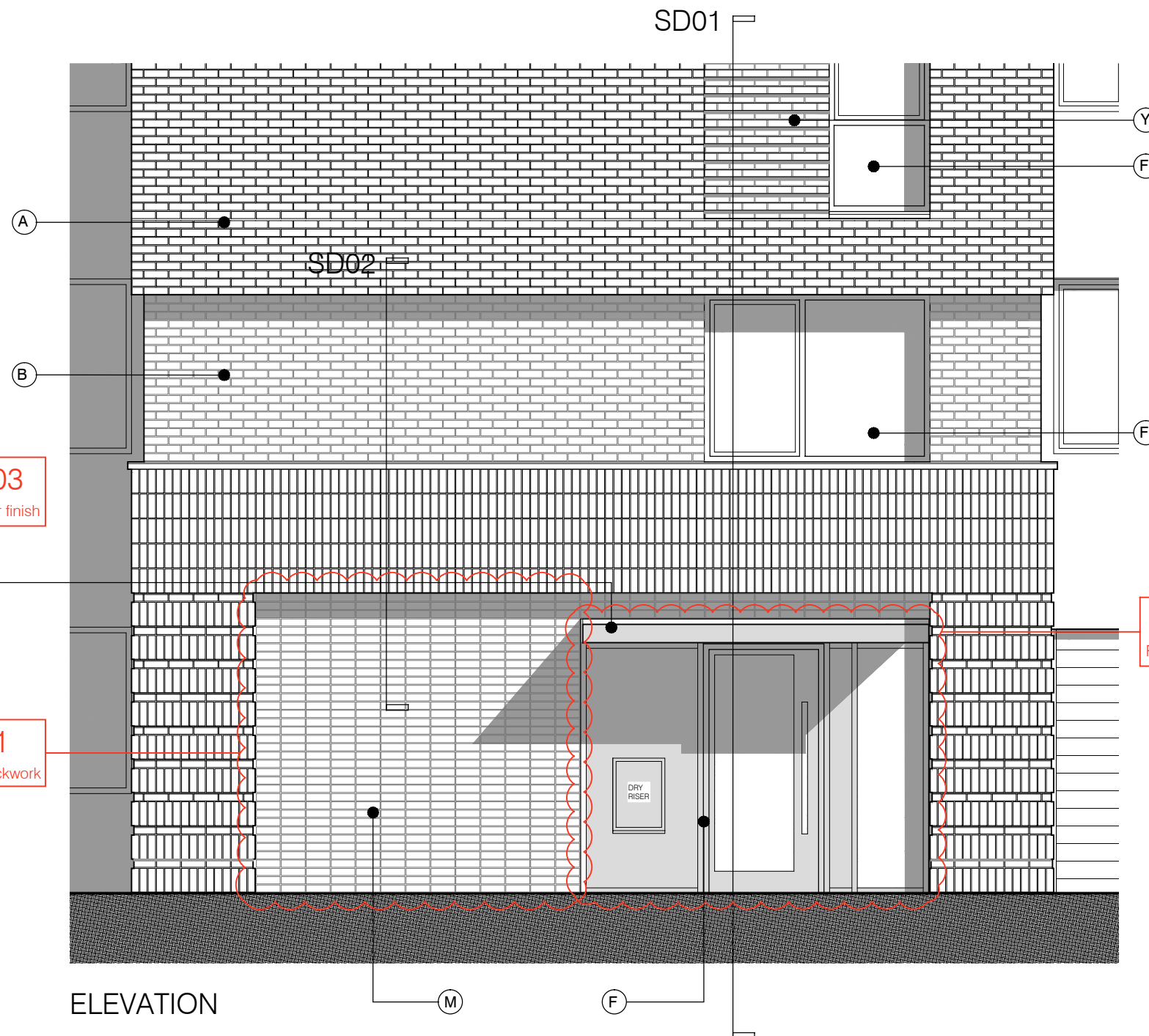


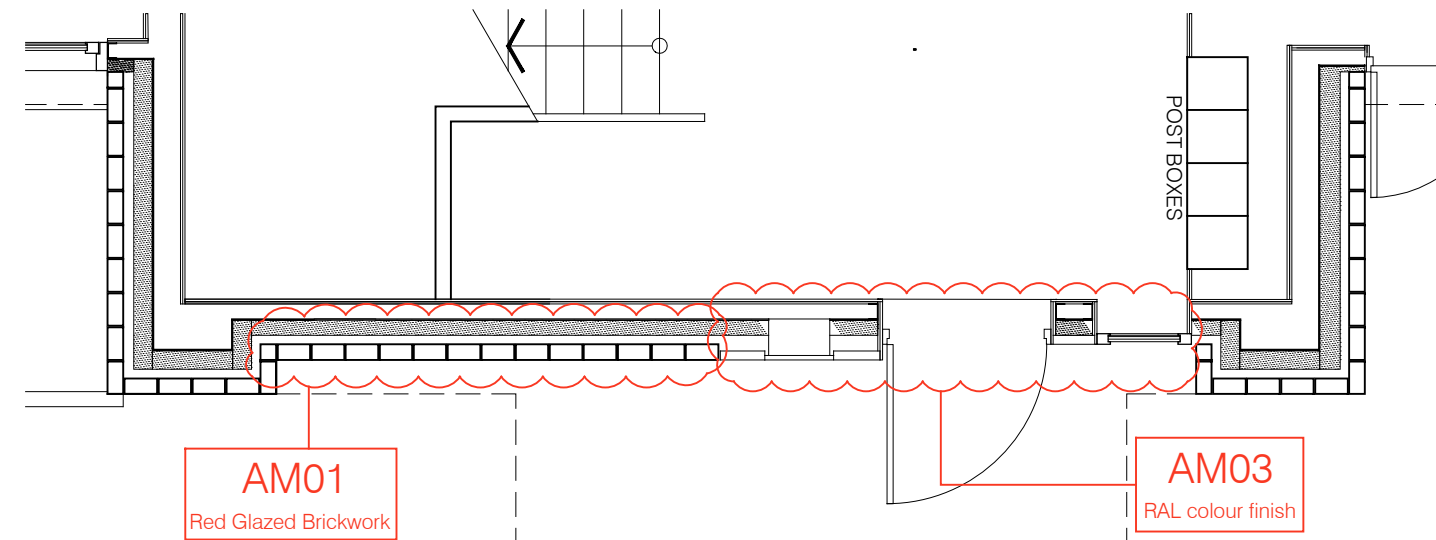
SECTION DETAIL 01



SECTION DETAIL 02



ELEVATION

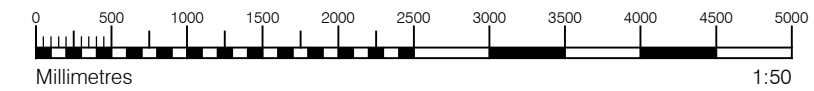


PLAN

MATERIAL KEY

- A** - Brick work type 1: stretcher bond brickwork. Openings to have a deep brick reveal (approx 190mm unless stated otherwise).
- B** - Brick work type 2: stretcher bond brickwork. Allow for darker mortar to recessed brick walls. Openings to have a deep brick reveal (approx 190mm unless stated otherwise).
- F** - Windows / doors: RAL colour finish aluminum framed double or triple glazed units (manufacturer to be agreed).
- G** - Canopies: Pre-formed metal boxed canopy in RAL colour finish with hidden structure and integral lighting.
- M** - Residential Entrances: Glazed brickwork - Red stack bonded.
- Y** - Brick work type 2: Slightly recessed brick wall with stepped brick coursing

For specification, refer to drawing PL 001-Rev B included within this Section 73 application



S73 APPLICATION

D	28.04.17 Section 73 issued for planning.	DS	DPD	
D	31.03.17 Amendment references added. Material key updated. Issued to Wates prior to planning submission.	DS	DB	
C	21.06.16 Section 73 issued to planning.	EN	DPD	
rev.	date	notes	drn	aud

PLANNING

Diespeker Wharf
38 Graham Street
London N1 8JX

t: 020 7336 7777 w: www.ptea.co.uk
f: 020 7336 0770 e: forename.surname@ptea.co.uk



project	ABBEY AREA REGENERATION-PHASE 1 LONDON	job.no.	12_510	drawn	EG	audited	DPD	scale	1:50@A3	date	JUL 13
dwg title	FRONT ENTRANCE - BLOCK C		orig. no.	510_1_PL_404		rev	D				