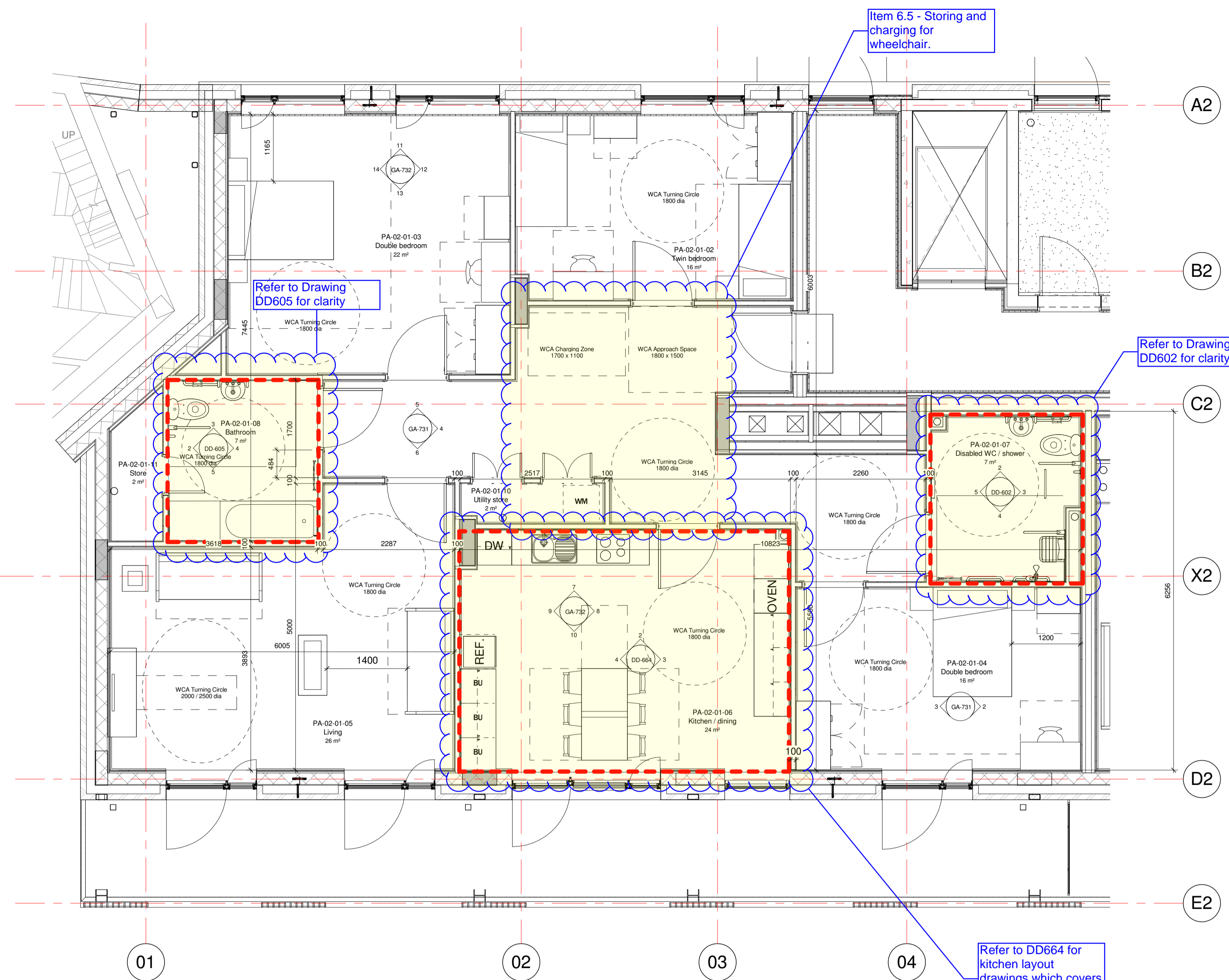


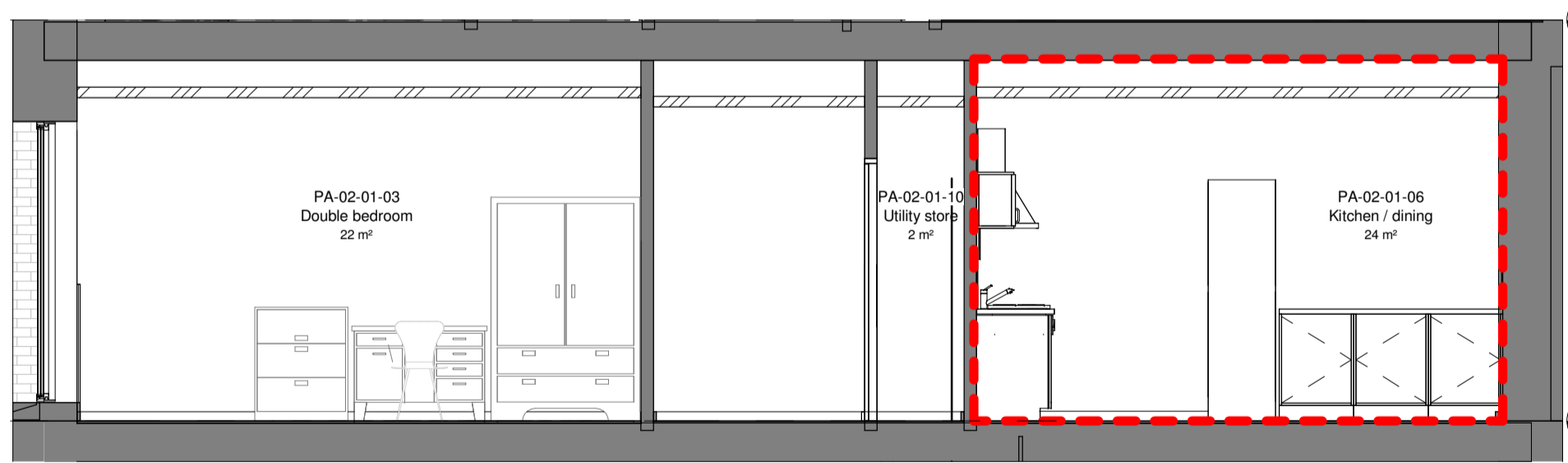
Notes
 This drawing is © Archtype Ltd.
 Check this drawing is the latest revision.
 Do not scale from this drawing.
 Do not use the information on this drawing without checking all dimensions on site.
 Do not use any areas indicated for either valuation, purchase, sale or any other form of legally binding contract.
 Do not reproduce any part of this drawing without prior written consent.
 Report any discrepancies on this document to Archtype.
 Read this drawing in conjunction with the associated models, specifications and related consultant's documents.
 Equivalent products / materials may be Approved where the Employer's Requirements, Thermal Performance, Airtightness and any other specified performance requirements are met. Subject to Archtype "Acceptance".
 All materials to be certified to comply with BS 14001 or BES6001 or be able to provide a Chain of Custody certificate in order to comply Code for Sustainable Homes. All timber species and sources used in this development are not to be listed on the CITES appendices for endangered or threatened species (appendix I, II or III)

AG Flat Areas - R1				
Department	Occupancy	Number	Area	Name
PA-02-01				
R1	3B6P	PA-02-01-01	26 m ²	Hallway
R1	3B6P	PA-02-01-02	16 m ²	Twin bedroom
R1	3B6P	PA-02-01-03	22 m ²	Double bedroom
R1	3B6P	PA-02-01-04	16 m ²	Double bedroom
R1	3B6P	PA-02-01-05	26 m ²	Living
R1	3B6P	PA-02-01-06	24 m ²	Kitchen / dining
R1	3B6P	PA-02-01-07	7 m ²	Disabled WC / shower
R1	3B6P	PA-02-01-08	7 m ²	Bathroom
R1	3B6P	PA-02-01-10	2 m ²	Utility store
R1	3B6P	PA-02-01-11	2 m ²	Store
10			148 m ²	



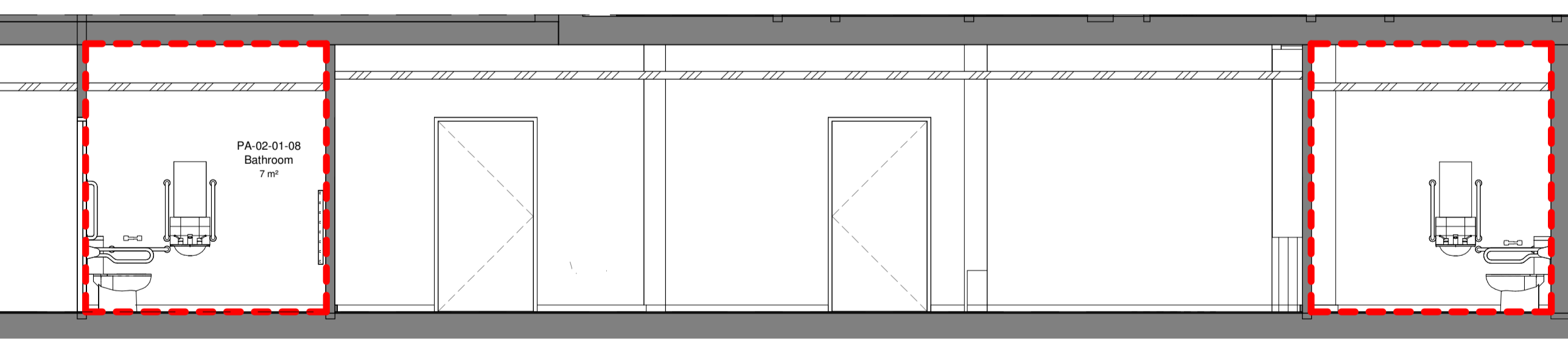
1 Flat type R1 Plan
1 : 50

3 A2 Third Lower
38.225



4 IE-R1-E2
1 : 50

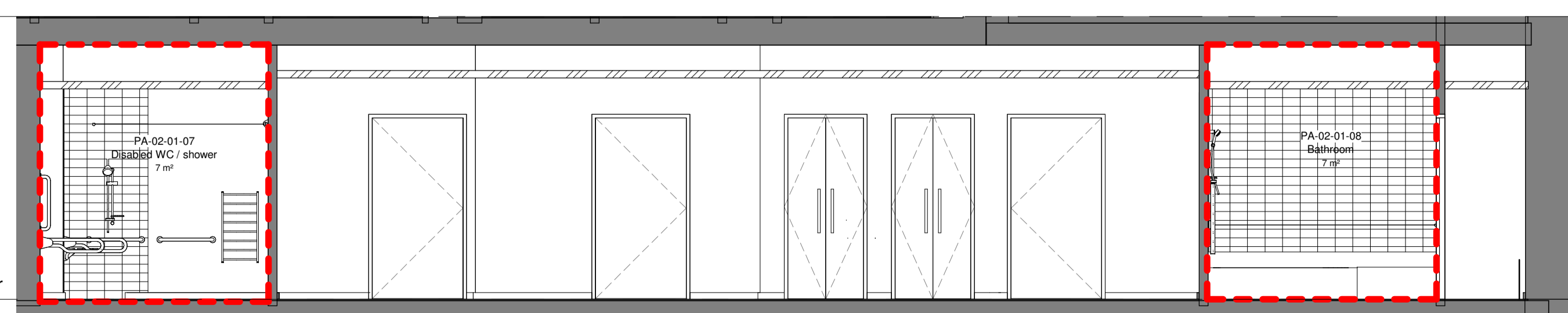
3 A2 Third Lower
38.225



5 IE-R1-N2
1 : 50

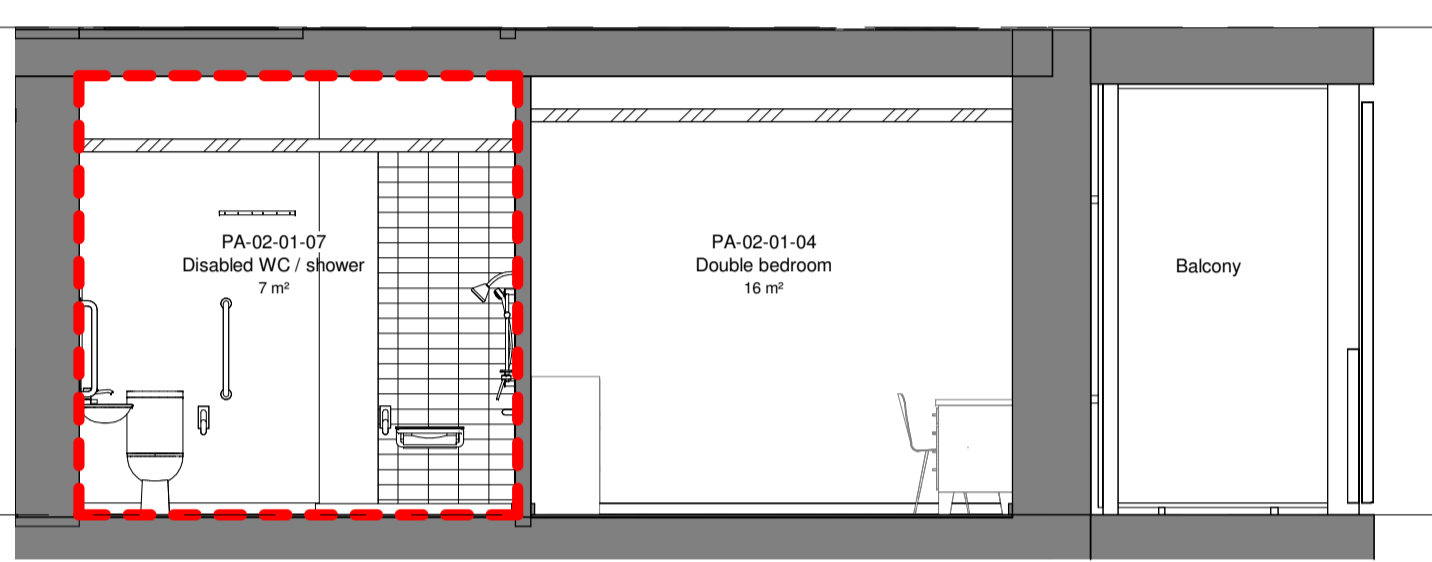
2 A2 Second Lower
35.000

3 A2 Third Lower
38.225



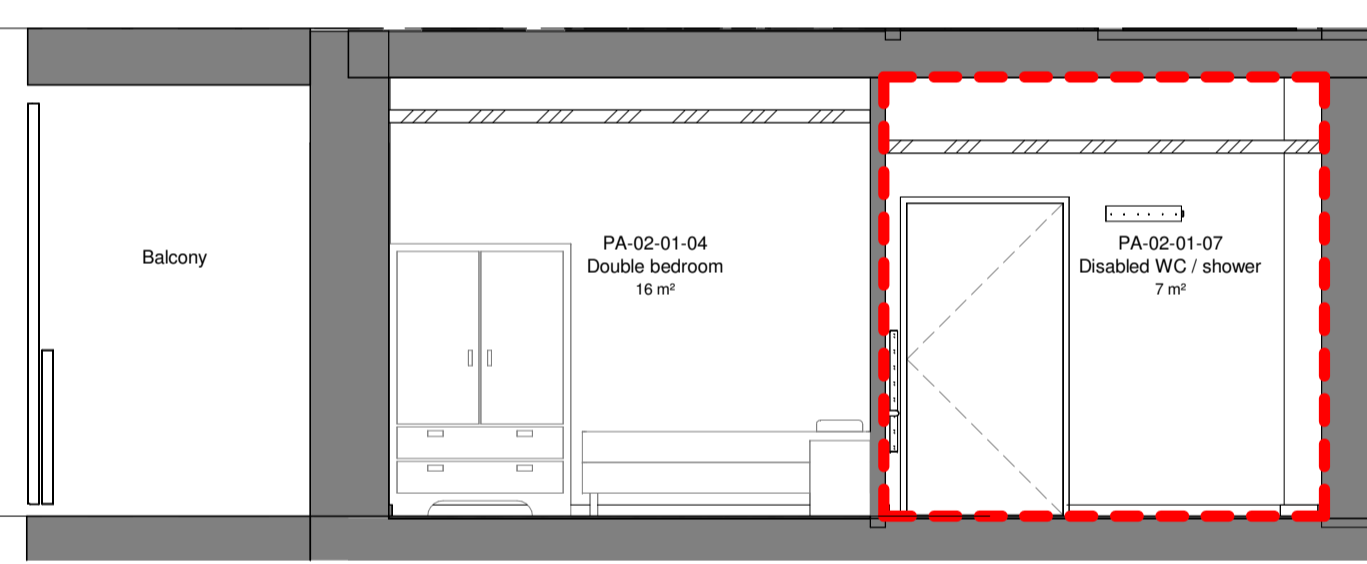
6 IE-R1-S2
1 : 50

3 A2 Third Lower
38.225



2 IE-R1-E1
1 : 50

2 A2 Second Lower
35.000



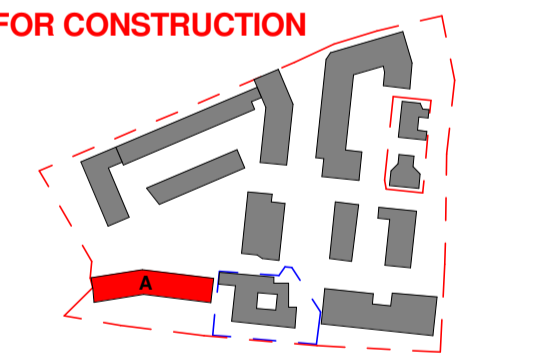
3 IE-R1-W1
1 : 50

Notes:
 - All H/B areas here are taken from their DWGs issued with EIR - App. 6.
 - The flat type GIA calculations include all internal walls and columns and area occupied by the reveals of windows when measured and assessed as the internal dominant face. This description above has been taken from the following document available online "RICS_property_measurement_1st_edition_PGguidance_2015". Note this document supersedes the previous rules of measurement from RICS and references GIA floor area calculations in comparison with IPMS 2 method of GIA measurement Code of Measuring Practice

Rev	Date	Description	Drawn	Checked
5	31.01.18	LAST ISSUE FOR CONSTRUCTION	IC	RW
4	06.12.16	Updates as response to Occupational Therapist comments	IC	RW
3	05.05.16	Issued for Construction	AP	IC
2	19.10.15	Issued for Building Control	CD	EB
1	11.08.15	Preliminary Issue	CD	EB

Revision Schedule

LAST ISSUE FOR CONSTRUCTION



LONDON: 020 7403 2888 WWW.ARCHTYPE.CO.UK HEREFORD: 01961 542 111

Client: Hill Partnership Ltd for Camden Council

Project: Agar Grove Block A

Drawing Title: Flat type R1

Project Originator Type Role Phase Block Unit Unique ID
 T14011 - ART - DR - A - 1a A 00 - GA-731

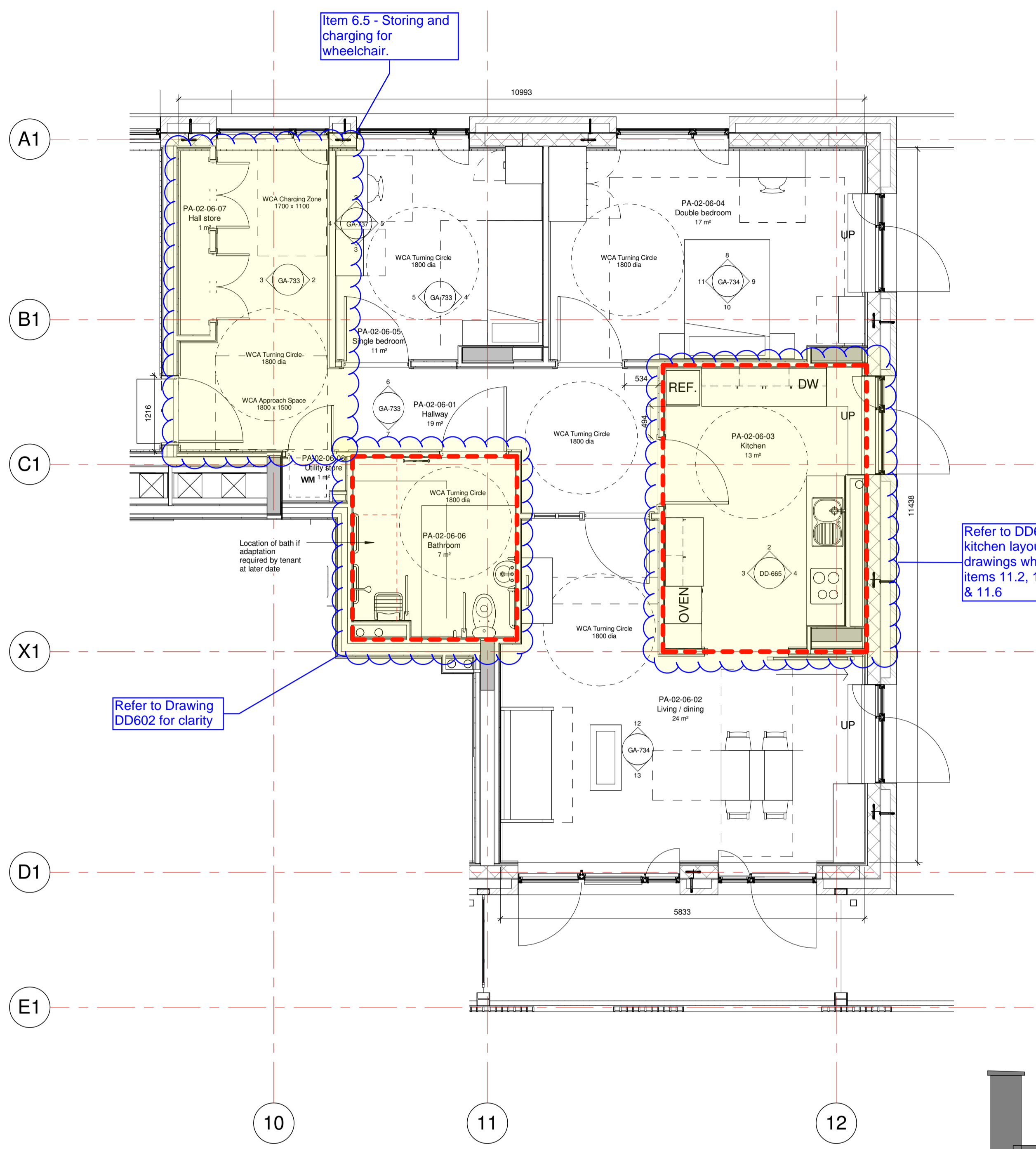
Status: Code Suitability Description
 A Issued for Construction

Revision: Code Revision Description
 Z5 Revision description as above

Scale: As indicated @ A1 Date: 02 Feb 15

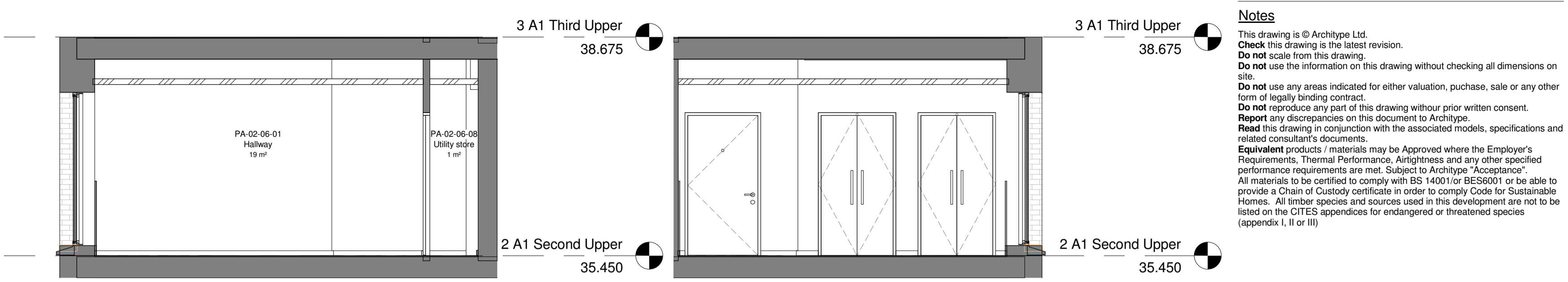
Drawn by: IC Checked by: CD
 Internal Project Ref: 8090 Model Ref: AG-RAC2015-A-A

Refer to DD-600 series for accurate setting out of bathrooms
 Refer to DD-650 series for accurate setting out of kitchens
 Elevations indicative here only

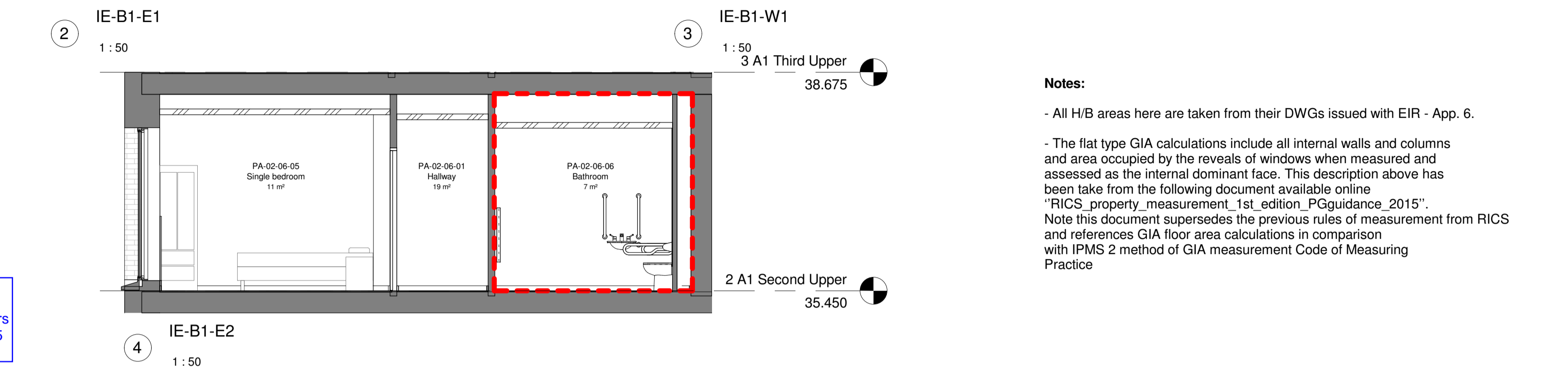


Refer to Drawing DD602 for clarity

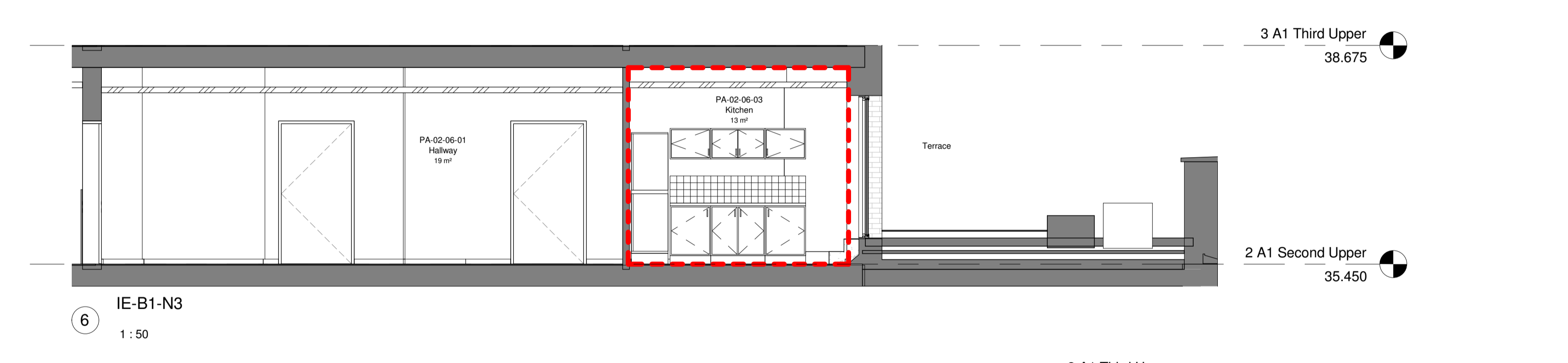
Refer to DD665 for kitchen layout drawings which covers items 11.2, 11.4, 11.5 & 11.6



Notes
 This drawing is © Archtype Ltd.
 Check this drawing is the latest revision.
 Do not scale from this drawing.
 Do not use the information on this drawing without checking all dimensions on site.
 Do not use any areas indicated for either valuation, purchase, sale or any other form of legally binding contract.
 Do not reproduce any part of this drawing without prior written consent.
 Report any discrepancies on this document to Archtype.
 Read this drawing in conjunction with the associated models, specifications and related consultant's documents.
 Equivalent products / materials may be Approved where the Employer's Requirements, Thermal Performance, Airtightness and any other specified performance requirements are met. Subject to Archtype "Acceptance".
 All materials to be certified to comply with BS 14001 or BES6001 or be able to provide a Chain of Custody certificate in order to comply Code for Sustainable Homes. All timber species and sources used in this development are not to be listed on the CITES appendices for endangered or threatened species (appendix I, II or III)

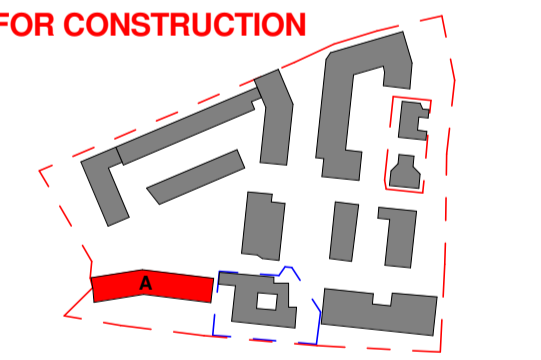


Notes:
 - All H/B areas here are taken from their DWGs issued with EIR - App. 6.
 - The flat type GIA calculations include all internal walls and columns and area occupied by the reveals of windows when measured and assessed as the internal dominant face. This description above has been taken from the following document available online "RICS property measurement 1st edition PGuidance 2015". Note this document supersedes the previous rules of measurement from RICS and references GIA floor area calculations in comparison with IPMS 2 method of GIA measurement Code of Measuring Practice



Rev	Date	Description	Drawn	Checked
4	31.01.18	LAST ISSUE FOR CONSTRUCTION	IC	RW
3	06.12.16	Updates as response to Occupational Therapist comments	IC	RW
2	19.10.15	Issued for Building Control	CD	EB
1	11.08.15	Preliminary Issue	CD	EB

LAST ISSUE FOR CONSTRUCTION

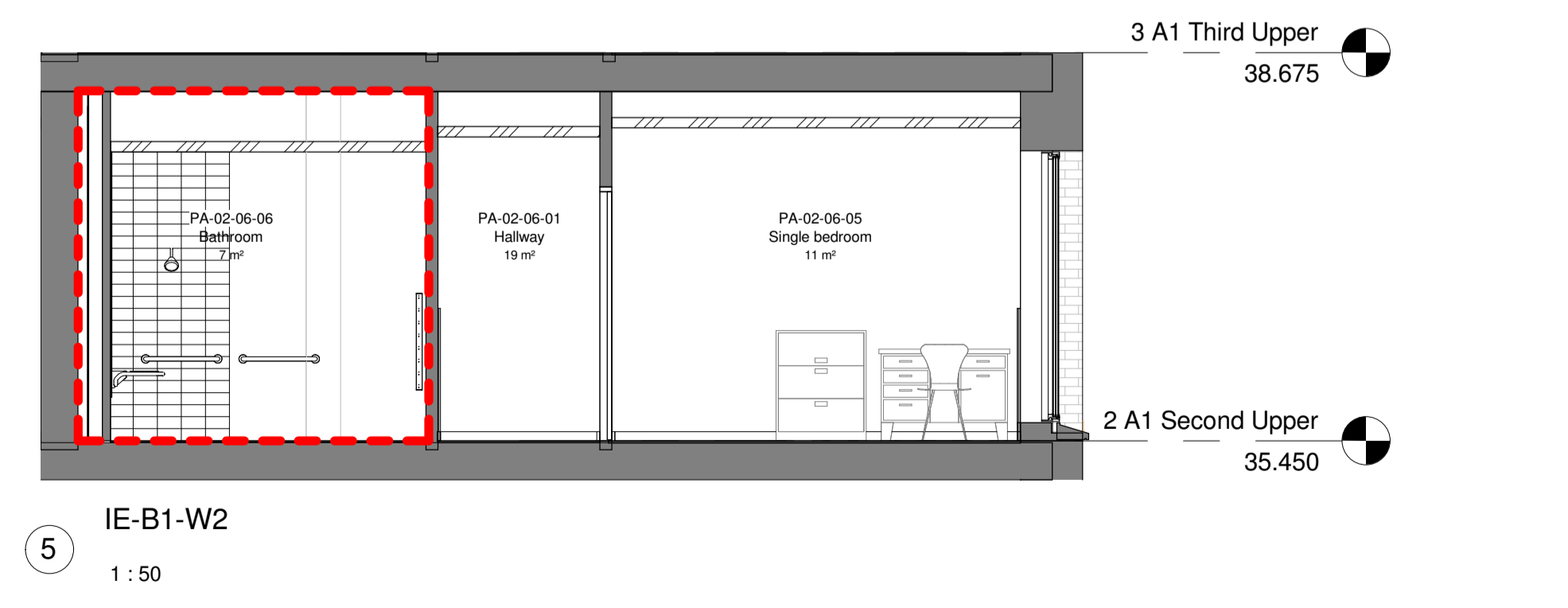
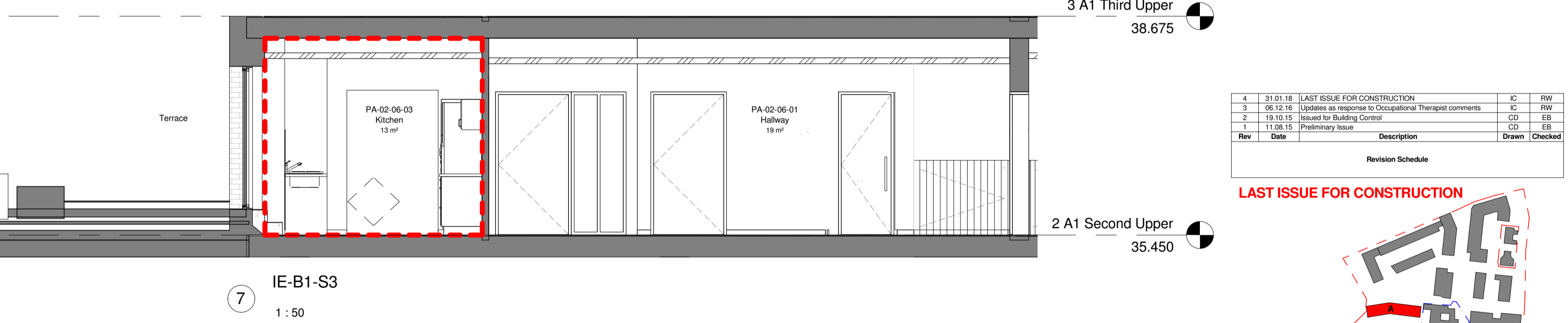


1 Flat type B1 Plan
1:50

AG Flat Areas - P5				
Department	Occupancy	Number	Area	Name
PA-04-06				
P5a	3B5P	PA-04-06-01	12 m ²	Hallway
P5a	3B5P	PA-04-06-02	27 m ²	Living / dining
P5a	3B5P	PA-04-06-03	12 m ²	Kitchen
P5a	3B5P	PA-04-06-04	13 m ²	Double bedroom
P5a	3B5P	PA-04-06-05	13 m ²	Double bedroom
P5a	3B5P	PA-04-06-06	8 m ²	Single bedroom
P5a	3B5P	PA-04-06-07	5 m ²	Bathroom
P5a	3B5P	PA-04-06-08	3 m ²	WC
P5a	3B5P	PA-04-06-09	1 m ²	Utility store
P5a	3B5P	PA-04-06-10	1 m ²	Hall store
10			95 m ²	
PA-05-06				
P5b	3B5P	PA-05-06-01	11 m ²	Hallway
P5b	3B5P	PA-05-06-02	27 m ²	Living / dining

AG Flat Areas - P5				
Department	Occupancy	Number	Area	Name
P5b	3B5P	PA-05-06-03	12 m ²	Kitchen
P5b	3B5P	PA-05-06-04	13 m ²	Double bedroom
P5b	3B5P	PA-05-06-05	13 m ²	Double bedroom
P5b	3B5P	PA-05-06-06	8 m ²	Single bedroom
P5b	3B5P	PA-05-06-07	5 m ²	Bathroom
P5b	3B5P	PA-05-06-08	3 m ²	WC
P5b	3B5P	PA-05-06-09	1 m ²	Utility store
P5b	3B5P	PA-05-06-10	1 m ²	Hall store
10			95 m ²	
PA-06-03				
P5c	3B5P	PA-06-03-01	12 m ²	Hallway
P5c	3B5P	PA-06-03-02	27 m ²	Living / dining
P5c	3B5P	PA-06-03-03	12 m ²	Kitchen
P5c	3B5P	PA-06-03-04	13 m ²	Double bedroom

AG Flat Areas - P5				
Department	Occupancy	Number	Area	Name
P5c	3B5P	PA-06-03-05	13 m ²	Double bedroom
P5c	3B5P	PA-06-03-06	8 m ²	Single bedroom
P5c	3B5P	PA-06-03-07	5 m ²	Bathroom
P5c	3B5P	PA-06-03-08	3 m ²	WC
P5c	3B5P	PA-06-03-09	1 m ²	Utility store
P5c	3B5P	PA-06-03-11	1 m ²	Hall store
10			95 m ²	



Hill
ARCHTYPE

LONDON: 020 7403 8888 WWW.ARCHTYPE.CO.UK HEREFORD: 01961 542 111

Client: Hill Partnership Ltd for Camden Council
 Project: Agar Grove Block A
 Drawing Title: Flat type B1

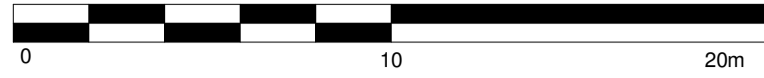
Project	Originator	Type	Role	Phase	Block	Unit	Unique ID
T14011	- ART	- DR	- A	- 1a	A 00	- GA-733	

Status: Code Suitability Description
 A Issued for Construction

Revision: Code Revision Description
 Z4 Revision description as above

Scale: As indicated @ A1 Date: 02 Feb 15
 Drawn by: IC Checked by: CD
 Internal Project Ref: 8090 Model Ref: AG-RAC2015-A-A

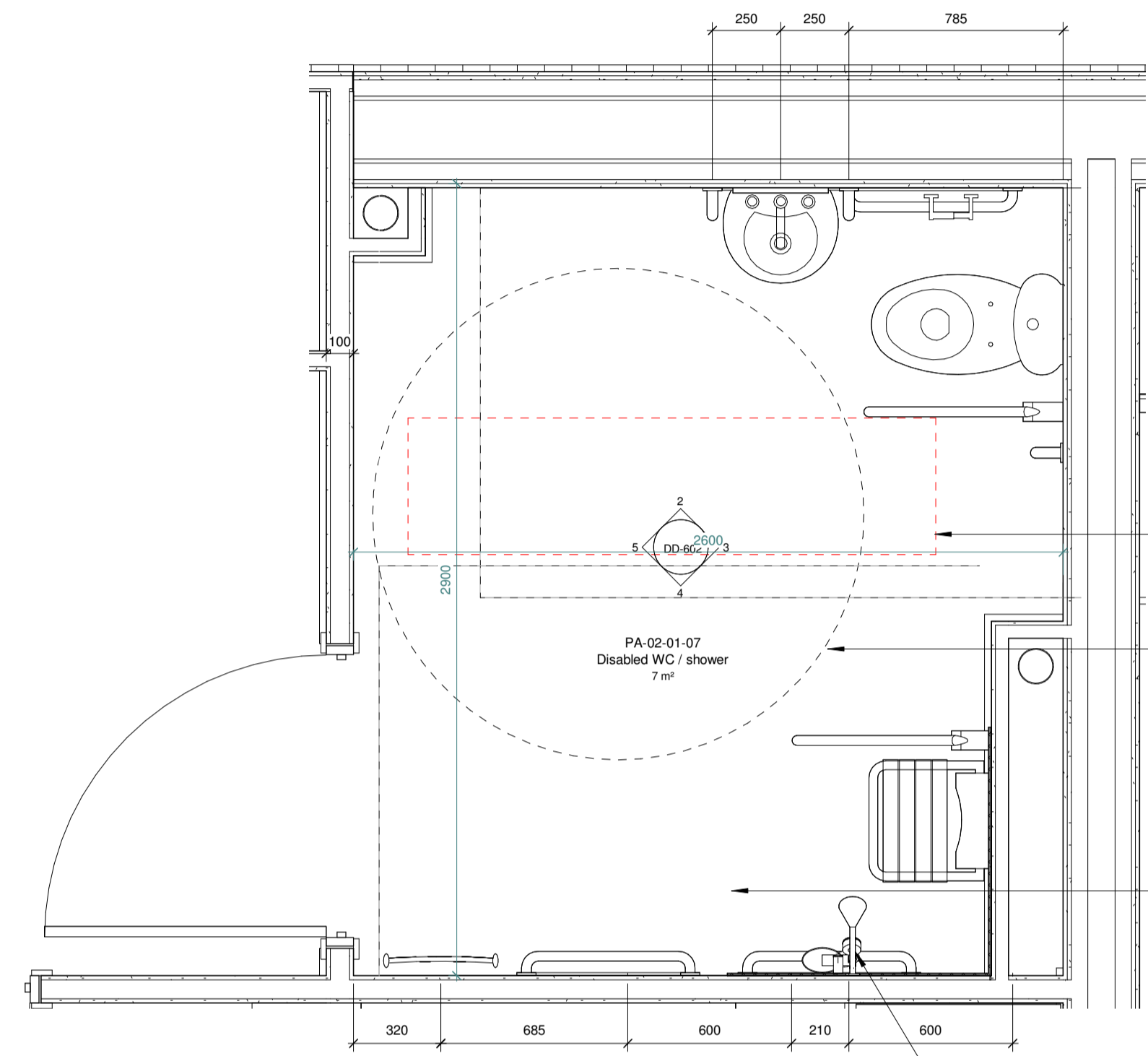
Refer to DD-600 series for accurate setting out of bathrooms
 Refer to DD-650 series for accurate setting out of kitchens
 Elevations indicative here only



Notes
 This drawing is © Archtype Ltd.
 Check this drawing is the latest revision.
 Do not scale from this drawing.
 Do not use the information on this drawing without checking all dimensions on site.
 Do not use any areas indicated for either valuation, purchase, sale or any other form of legally binding contract.
 Do not reproduce any part of this drawing without prior written consent.
 Report any discrepancies on this document to Archtype.
 Read this drawing in conjunction with the associated models, specifications and related consultant's documents.
 Equivalent products / materials may be Approved where the Employer's Requirements, Thermal Performance, Airtightness and any other specified performance requirements are met. Subject to Archtype "Acceptance".
 All materials to be certified to comply with BS 14001 or BES6001 or be able to provide a Chain of Custody certificate in order to comply Code for Sustainable Homes. All timber species and sources used in this development are not to be listed on the CITES appendices for endangered or threatened species (appendix I, II or III)

NOTE:
 Refer to M&E information for access panel locations and heights to maintain SVPs

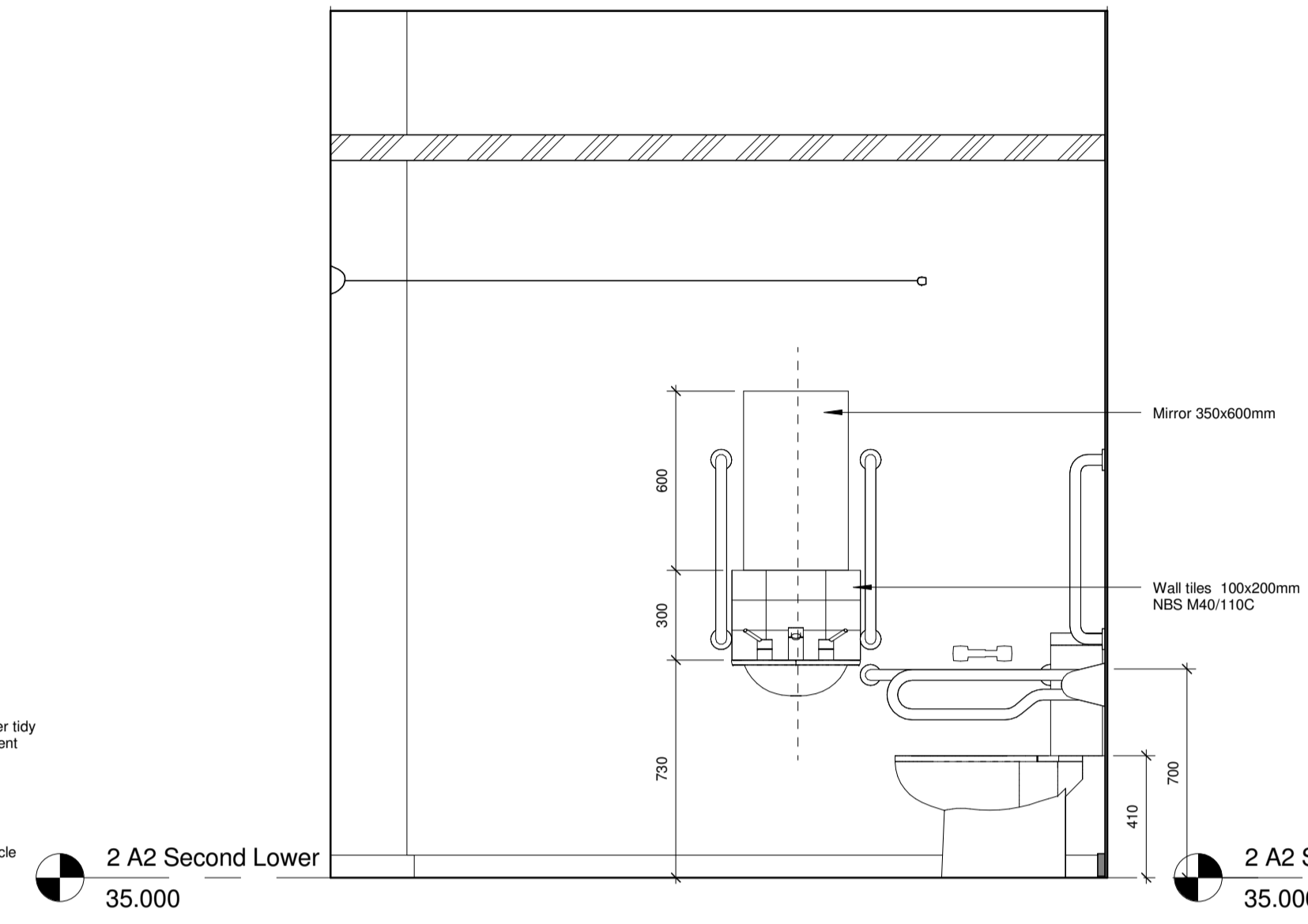
NOTE:
 Tile setting out as per typical tiling. Drawing only indicative of tile alignment, not setting out.



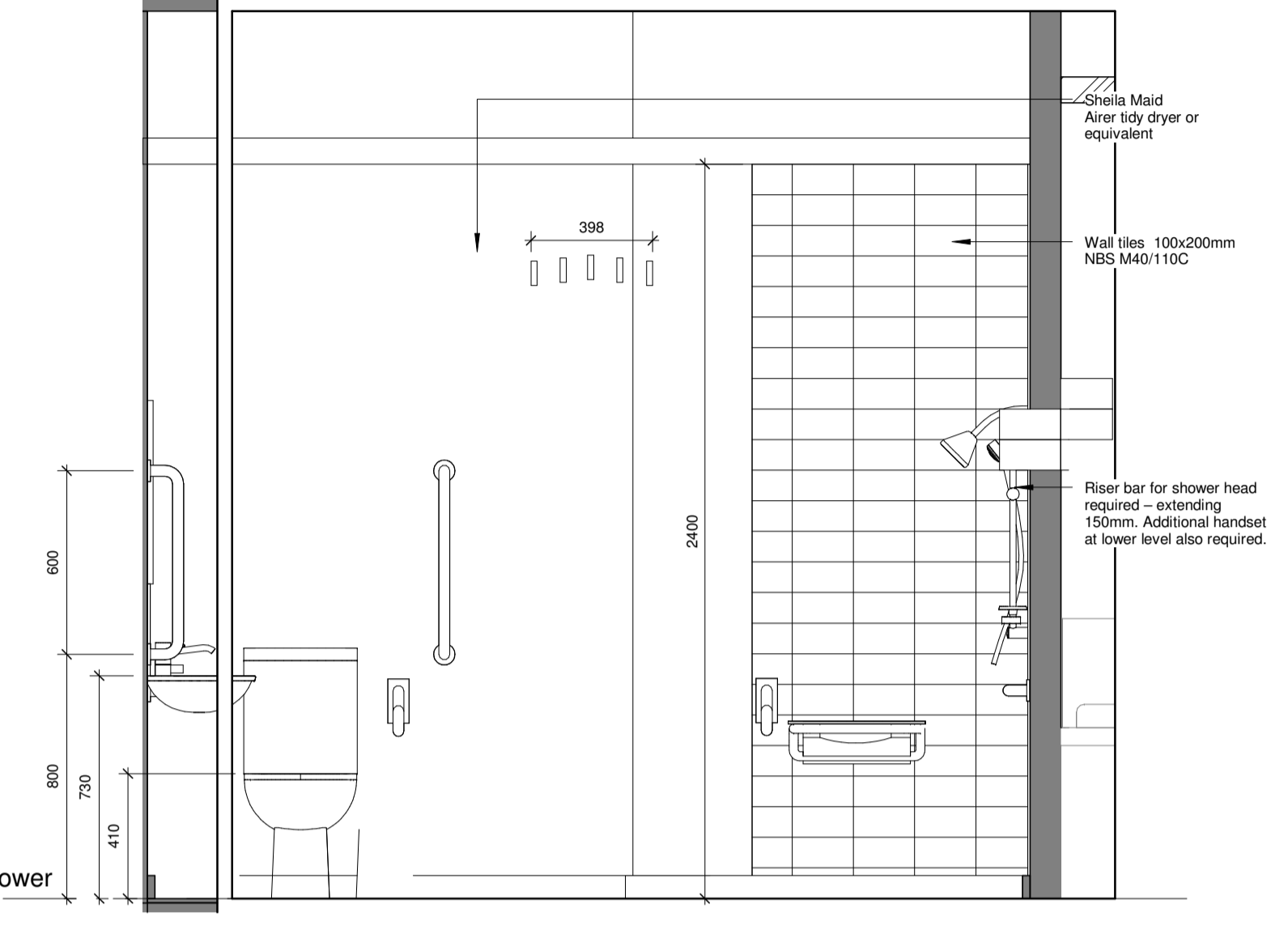
1 Typical Accessible Shower Room Plan
 1 : 20

NOTE:
 Shower room type present in flat type R1

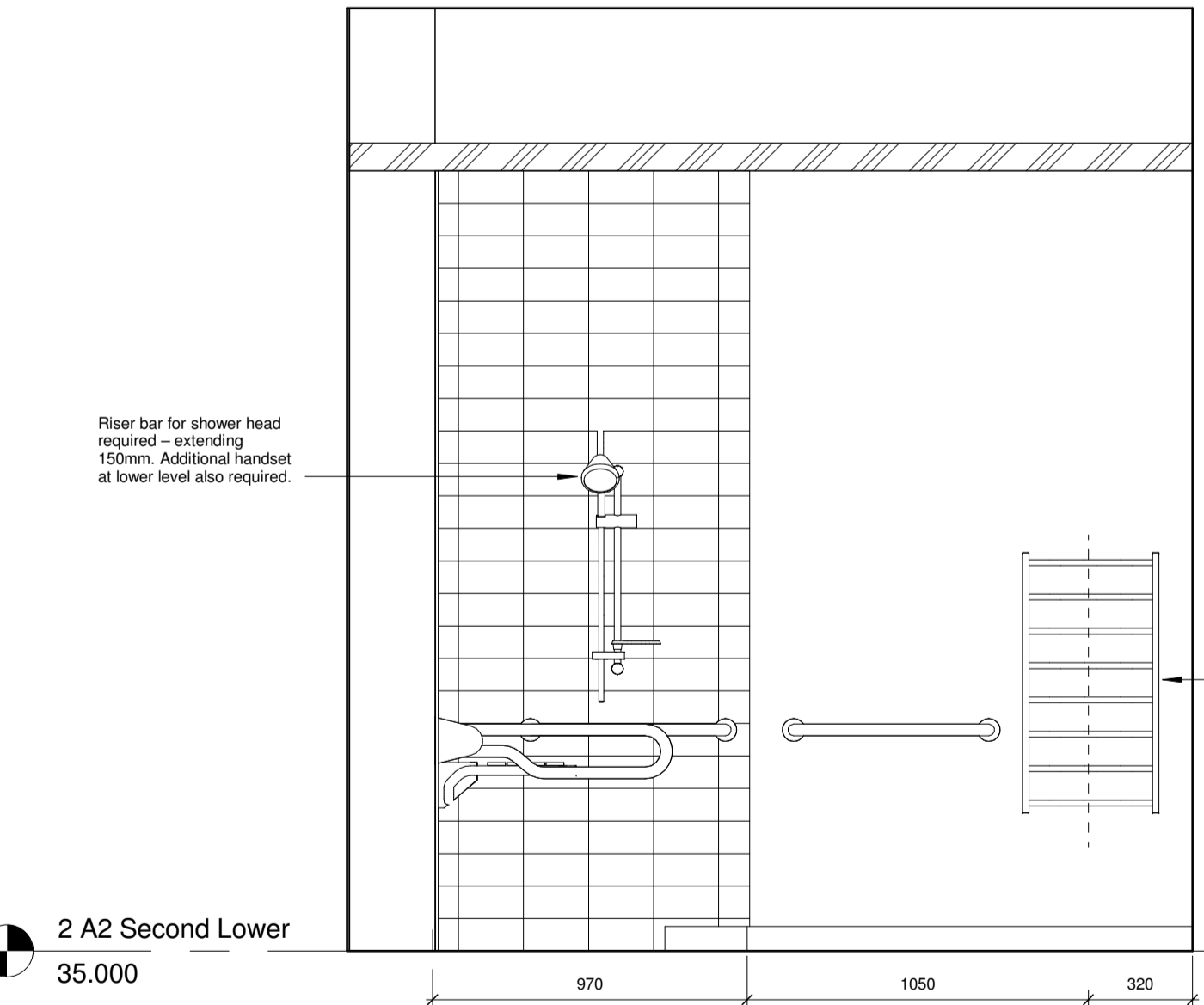
Typical Accessible Shower Room Sanitaryware Schedule Copy 1		
Description	Comments	Manufacturer
Bathroom - towel rail	Polished chrome towel rail. Bauhaus Design flat panel 450mm x 1430mm	Bauhaus
1 Doc M Shower Pack	All sanitaryware fixtures and fittings to be Code for Sustainable Homes Level 4 compliant	Ideal Standard (UK) Ltd or equivalent
1 Doc M WC Pack	All sanitaryware fixtures and fittings to be Code for Sustainable Homes Level 4 compliant	Ideal Standard (UK) Ltd or equivalent
1 Mirror	450x600mm with dome-head chrome fixings	
1 Toilet Tissue Dispenser	Chrome toilet roll holder adjacent to WC	Bradley Corporation
1 Wall mounted pull-out drying line	Line length to satisfy Code for Sustainable Homes Level 4 requirements	Leifheit Telegant or similar
6		



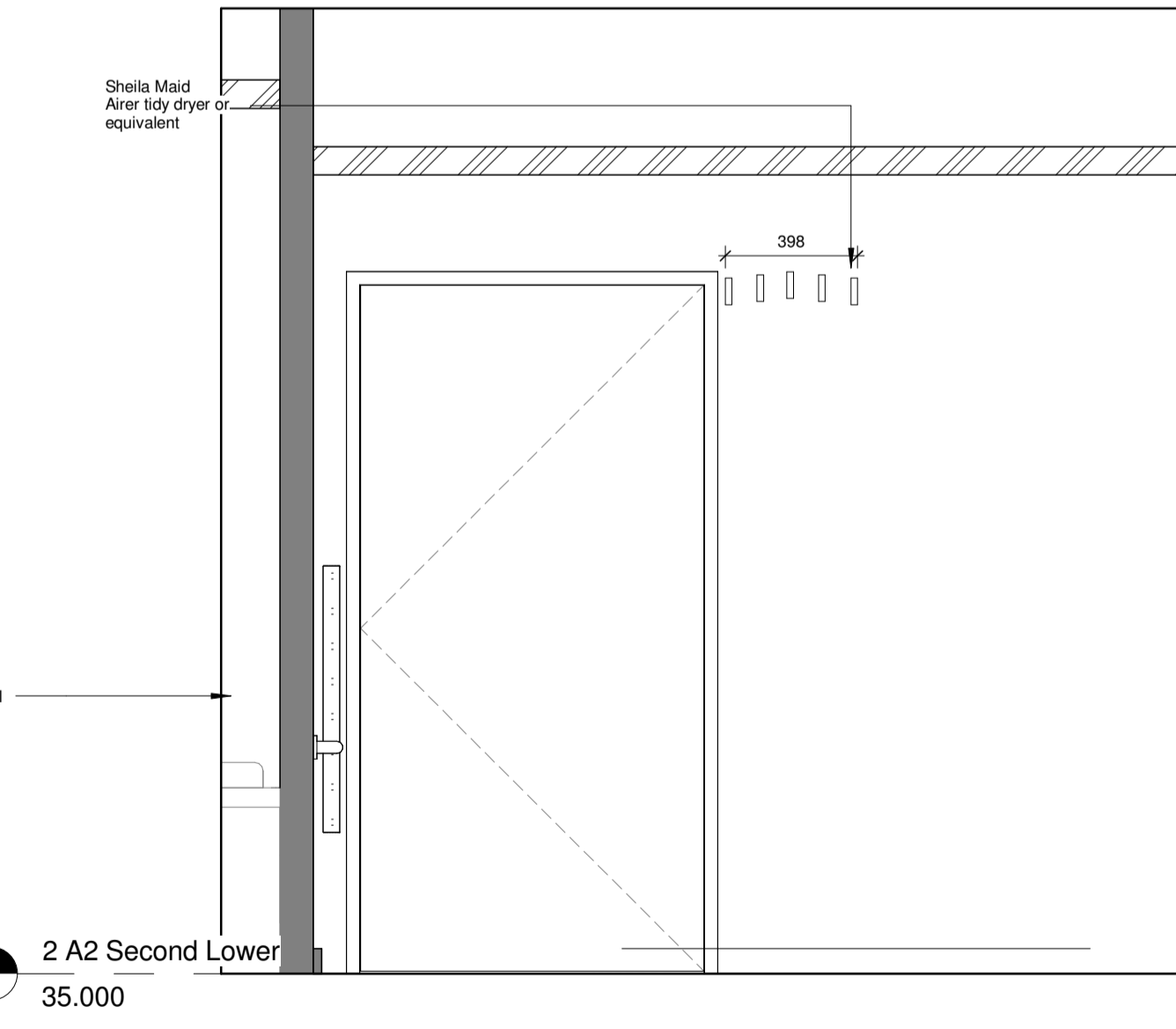
2 IE-TAS1-01
 1 : 20



3 IE-TAS1-02
 1 : 20



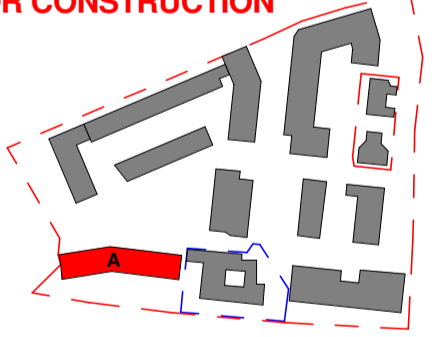
4 IE-TAS1-03
 1 : 20



5 IE-TAS1-04
 1 : 20

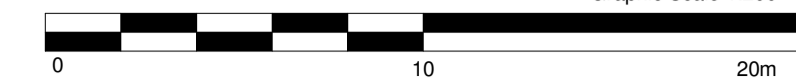
Rev	Date	Description	Drawn	Checked
9	31.01.18	LAST ISSUE FOR CONSTRUCTION	IC	RW
8	10.10.17	Update to flat type references and Sanitaryware Schedule	IC	RW
7	06.12.16	Updates as response to Occupational Therapist comments	IC	RW
6	22.11.16	Addition of bathroom location information & adjustments to lower rail locations	IC	RW
5	23.11.16	Update to tiling, and add to disabled shower room booms	IC	LF
4	19.08.16	Title specification alteration and general amendments	LM	IC
3	18.05.16	Issued for Construction	AP	IC
2	19.10.15	Issued for Building Control	CD	EB
1	03.09.15	Preliminary Issue	IC	CD

LAST ISSUE FOR CONSTRUCTION



LONDON: 020 7403 2888 WWW.ARCHTYPE.CO.UK HEREFORD: 01981 542 111

Client: Hill Partnership Ltd for Camden Council
 Project: Agar Grove Block A
 Drawing Title: Typical Accessible Shower Room
 Project Originator Type Role Phase Block Unit Unique ID
 T14011 - ART - DR - A - 1a A 00 - DD-602
 Status: Code Suitability Description
 A Issued for Construction
 Revision: Code Revision Description
 Z9 Revision description as above
 Scale: 1 : 20 @ A1 Date: 03 Sep 15
 Drawn by: IC Checked by: CD
 Internal Project Ref: 8090 Model Ref: AG-RAC2015-A-A

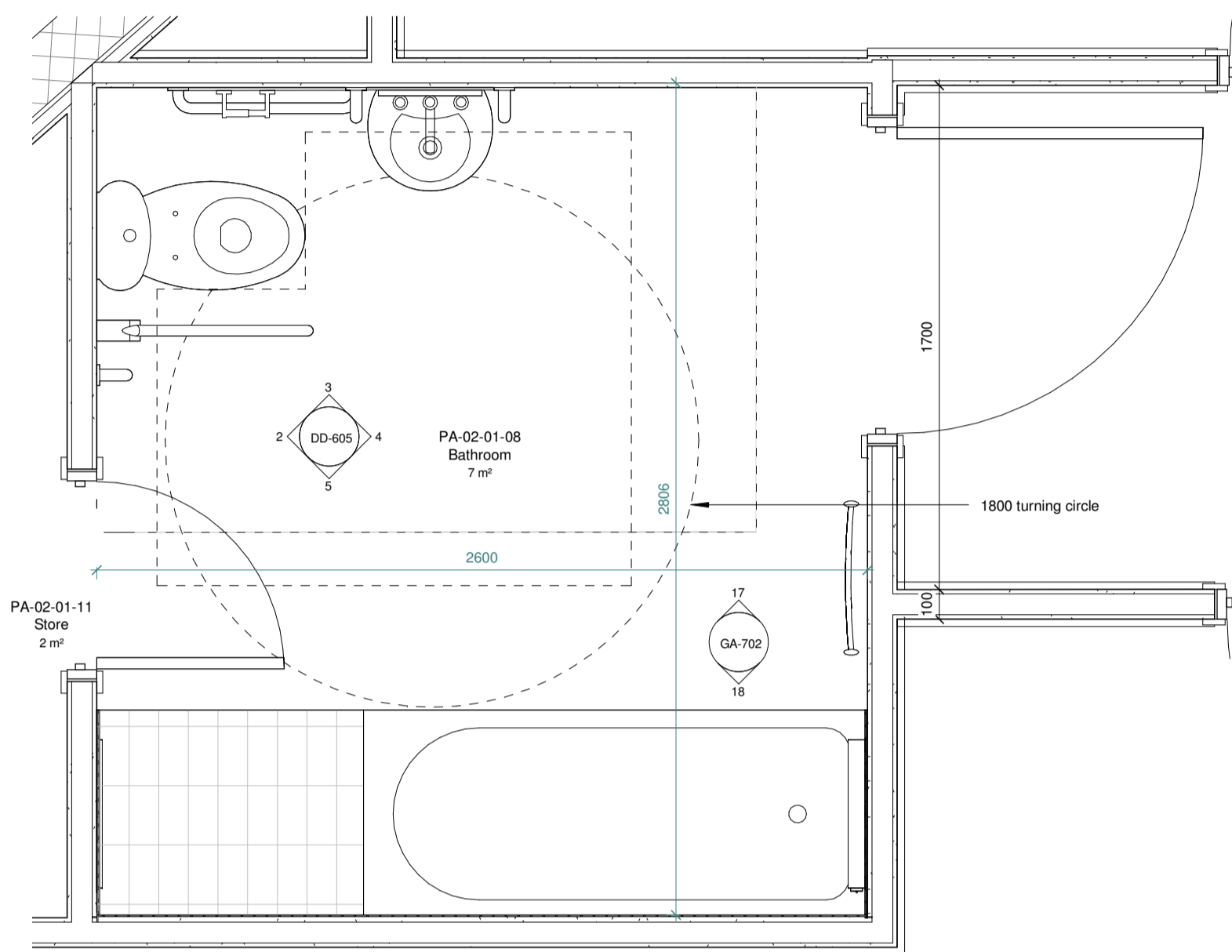


Notes

This drawing is © Archtype Ltd.
 Check this drawing is the latest revision.
 Do not scale from this drawing.
 Do not use the information on this drawing without checking all dimensions on site.
 Do not use any areas indicated for either valuation, purchase, sale or any other form of legally binding contract.
 Do not reproduce any part of this drawing without prior written consent.
 Report any discrepancies on this document to Archtype.
 Read this drawing in conjunction with the associated models, specifications and related consultant's documents.
 Equivalent products / materials may be Approved where the Employer's Requirements, Thermal Performance, Airtightness and any other specified performance requirements are met. Subject to Archtype "Acceptance".
 All materials to be certified to comply with BS 14001 or BES6001 or be able to provide a Chain of Custody certificate in order to comply Code for Sustainable Homes. All timber species and sources used in this development are not to be listed on the CITES appendices for endangered or threatened species (appendix I, II or III).

NOTE:
 Refer to M&E information for access panel locations and heights to maintain SVPs

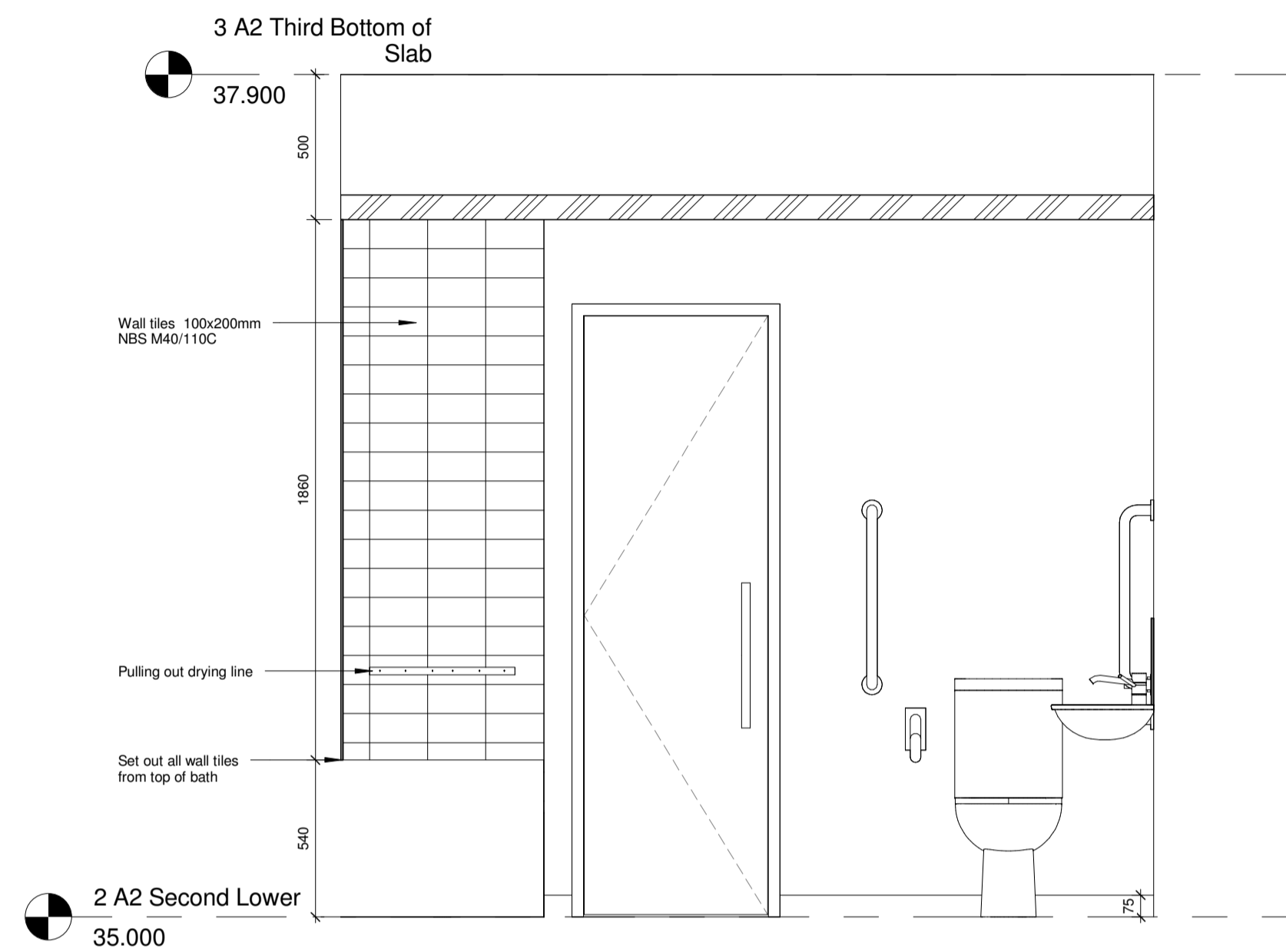
NOTE:
 Tile setting out as per typical tiling. Drawing only indicative of tile alignment, not setting out.



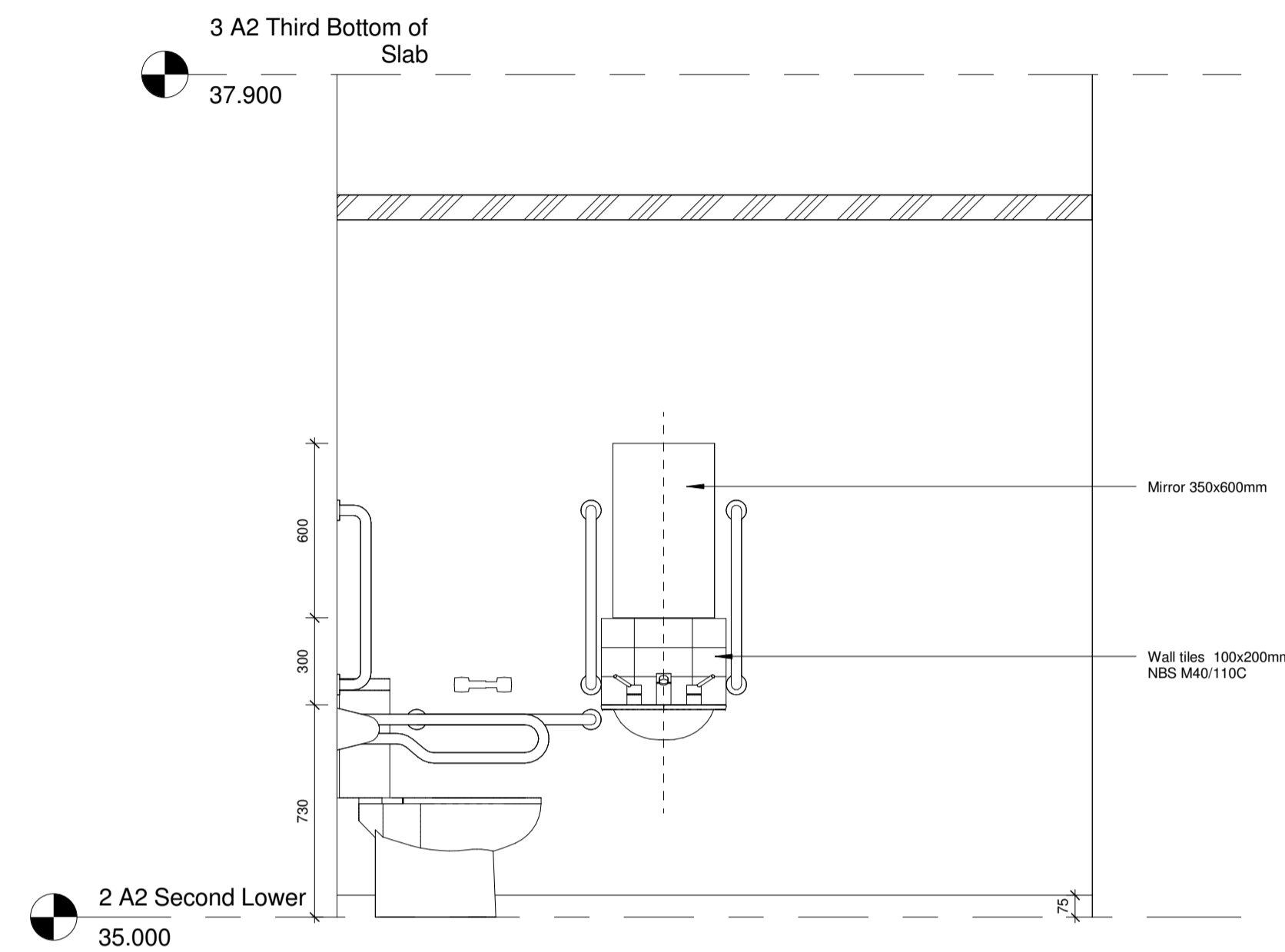
1 Flat type R1 Accessible Bathroom Plan
 1 : 20

NOTE:
 Bathroom type present in flat type R1

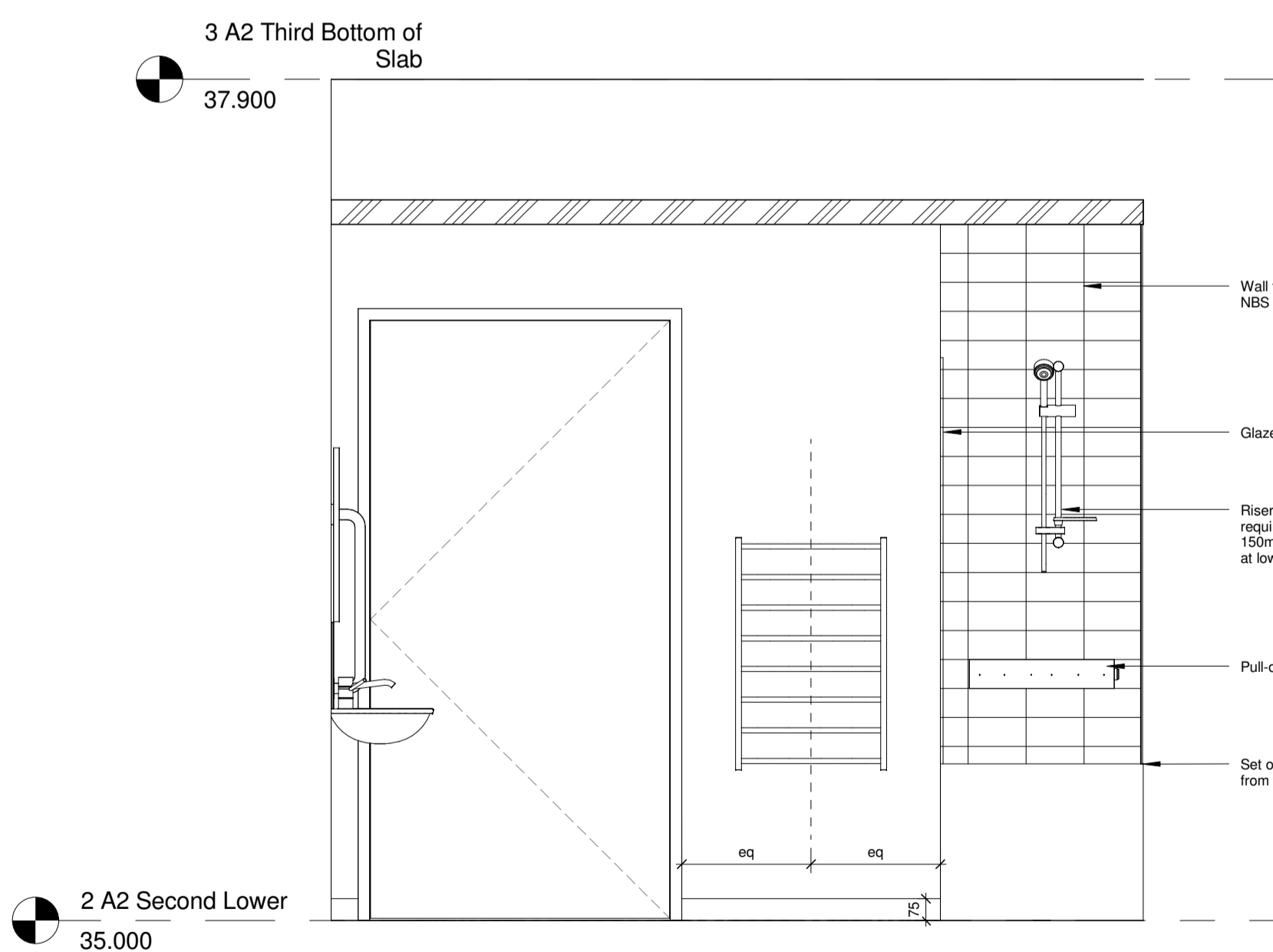
Bathroom R1 Sanitaryware Schedule		
Description	Comments	Manufacturer
Bath	All sanitary ware fixtures and fittings to be Code for Sustainable Homes Level 4 compliant	Twyfords
1		
Wall mounted pull-out drying line	Line length to satisfy Code for Sustainable Homes requirements	Leifheit Telegant or similar
1		
Mirror	450x600mm with dome-head chrome fixings	
1		
Heated towel rail	Polished chrome towel rail. Bauhaus Design flat panel 500mm x 1430mm	Bauhaus
1		
Toilet Tissue Dispenser	Chrome toilet roll holder adjacent to WC	Bradley Corporation
1		
Doc M WC Pack	All sanitary ware fixtures and fittings to be Code for Sustainable Homes Level 4 compliant	Ideal Standard (UK) Ltd or equivalent
1		
6		



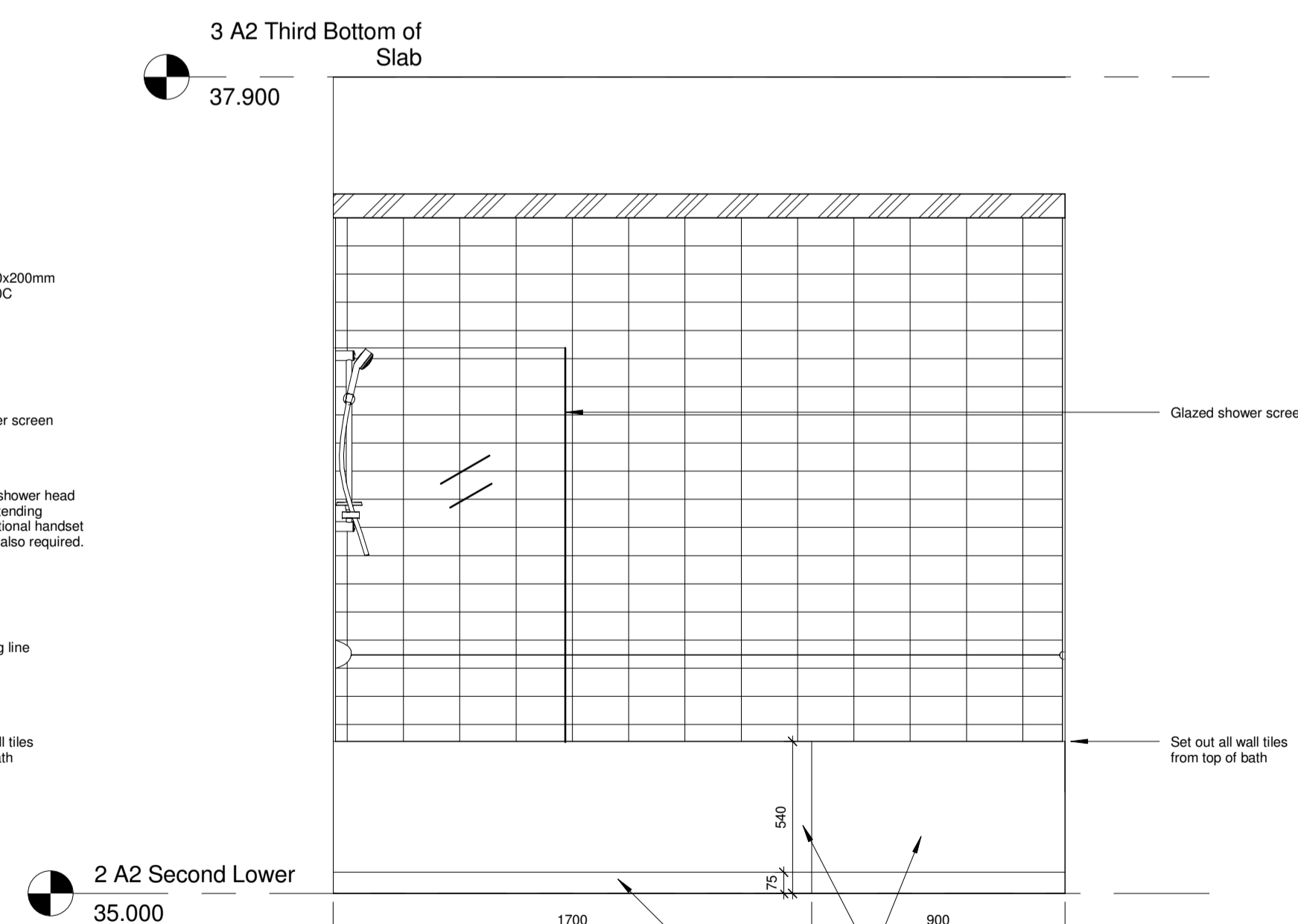
2 IE-ABR1-02
 1 : 20



3 IE-ABR1-03
 1 : 20



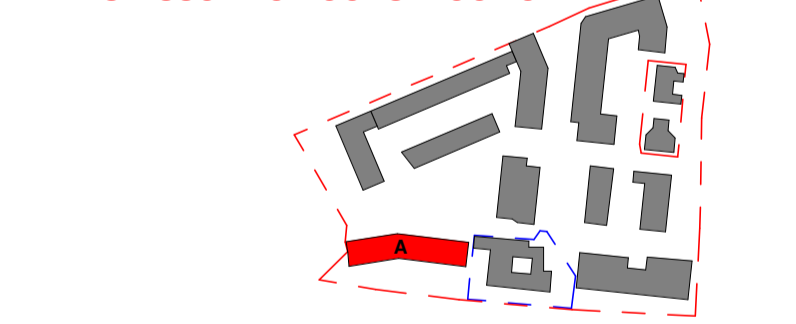
4 IE-ABR1-04
 1 : 20



5 IE-ABR1-05
 1 : 20

Rev	Date	Description	Drawn	Checked
3	31.01.18	LAST ISSUE FOR CONSTRUCTION	IC	RW
2	10.10.17	Revision of Sanitaryware Schedule	IC	RW
1	06.12.16	Updates as response to Occupational Therapist comments	IC	RW

LAST ISSUE FOR CONSTRUCTION



LONDON: 020 7403 2888 WWW.ARCHTYPE.CO.UK HEREFORD: 01961 542 111

Client: Hill Partnership Ltd for Camden Council

Project: Agar Grove Block A

Drawing Title: Flat type R1 Bathroom

Project Originator Type Role Phase Block Unit Unique ID
 T14011 - ART - DR - A - 1a A 00 - DD-605

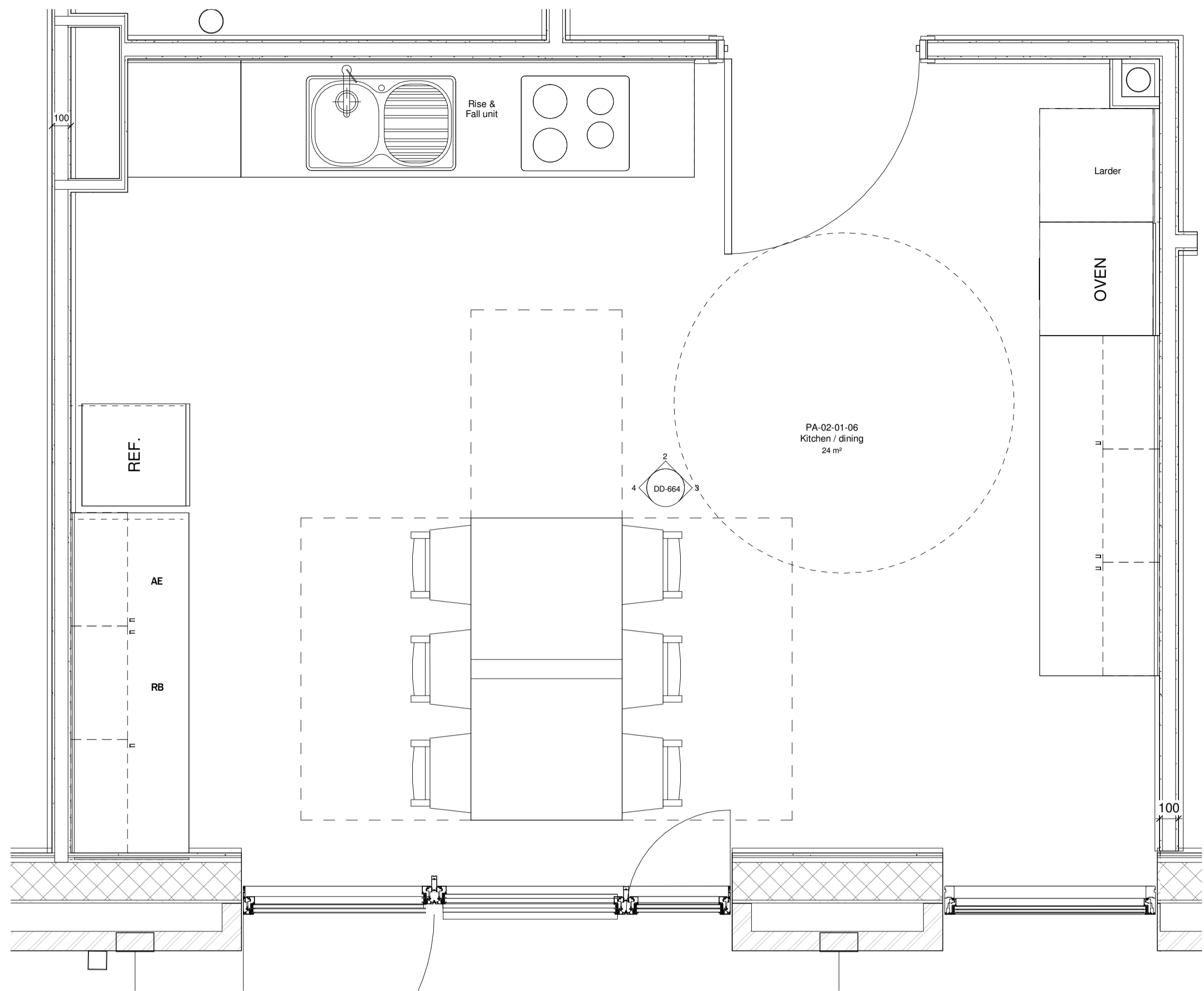
Status: Code Suitability Description
 A Issued for Construction

Revision: Code Revision Description
 Z3 Revision description as above

Scale: 1 : 20 @ A1 Date: 05 Dec 16

Drawn by: IC Checked by: RW

Internal Project Ref: 8090 Model Ref: AG-RAC2015-A-A



1 Flat Type R1 Kitchen Plan
1 : 20

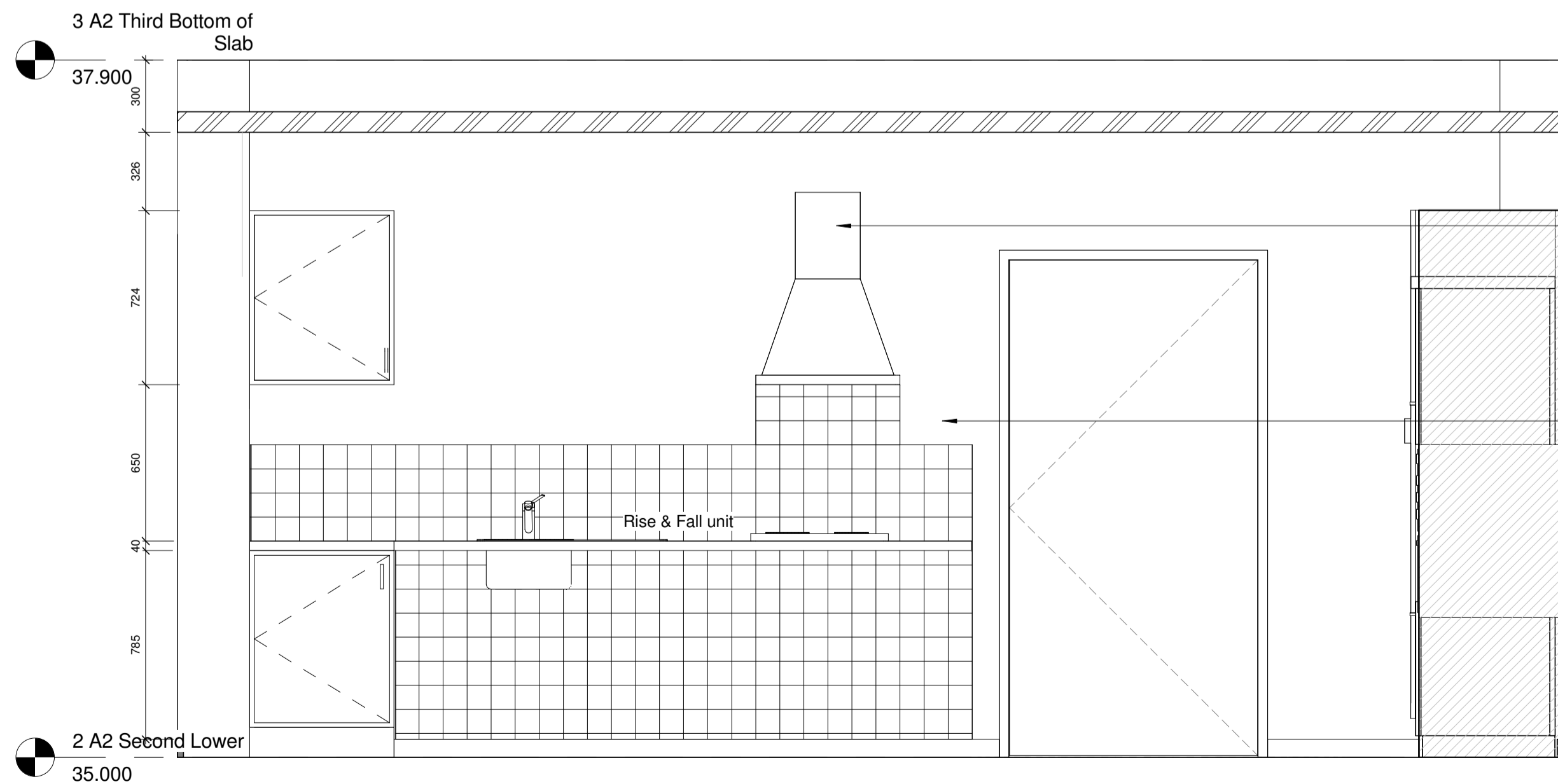
Casework Schedule IE-R1K				
Description	Mark	Width	Height	Depth
40mm Worktop	IE-R1K-WT01		900.0	625.0
40mm Worktop	IE-R1K-WT02		900.0	625.0
40mm Worktop	IE-R1K-WT03		900.0	625.0
40mm Worktop	IE-R1K-WT04		900.0	625.0
4				
600mm Base unit	IE-R1K-BU01	600.0	860.0	600.0
600mm Base unit	IE-R1K-BU04	600.0	860.0	600.0
600mm Base unit	IE-R1K-BU05	600.0	860.0	600.0
600mm Base unit	IE-R1K-BU06	600.0	860.0	600.0
600mm Base unit	IE-R1K-BU07	600.0	860.0	600.0
5				
600mm Base unit 3 drawers	IE-R1K-BU03	600.0	860.0	600.0
1				
600mm Base unit single drawer: Recycling bin	IE-R1K-BU02	600.0	860.0	600.0
1				
600mm Larder	IE-R1K-LA01	600.0	2276.0	600.0
1				
600mm Tall oven unit	IE-R1K-TO01	600.0	2000.0	600.0
1				
600mm Wall unit	IE-R1K-WU01	600.0	724.0	300.0
600mm Wall unit	IE-R1K-WU02	600.0	724.0	300.0
600mm Wall unit	IE-R1K-WU03	600.0	724.0	300.0
600mm Wall unit	IE-R1K-WU04	600.0	724.0	300.0
600mm Wall unit	IE-R1K-WU05	600.0	724.0	300.0
600mm Wall unit	IE-R1K-WU06	600.0	724.0	300.0
600mm Wall unit	IE-R1K-WU07	600.0	724.0	300.0
7				

Grand total: 20

Kitchen Equipment Schedule IE-R1K		
Description	Mark	Comments
Extractor Fan	IE-R1K-EX01	Client supplies
1		
Fridge Freezer	IE-R1K-FF01	Client supplies
1		
Electric Hob	IE-R1K-H01	Client supplies
1		
600mm Larder	IE-R1K-LA01	
1		
Oven	IE-R1K-OV01	Client supplies
1		
Sink	IE-R1K-SK01	
1		
Grand total: 6		

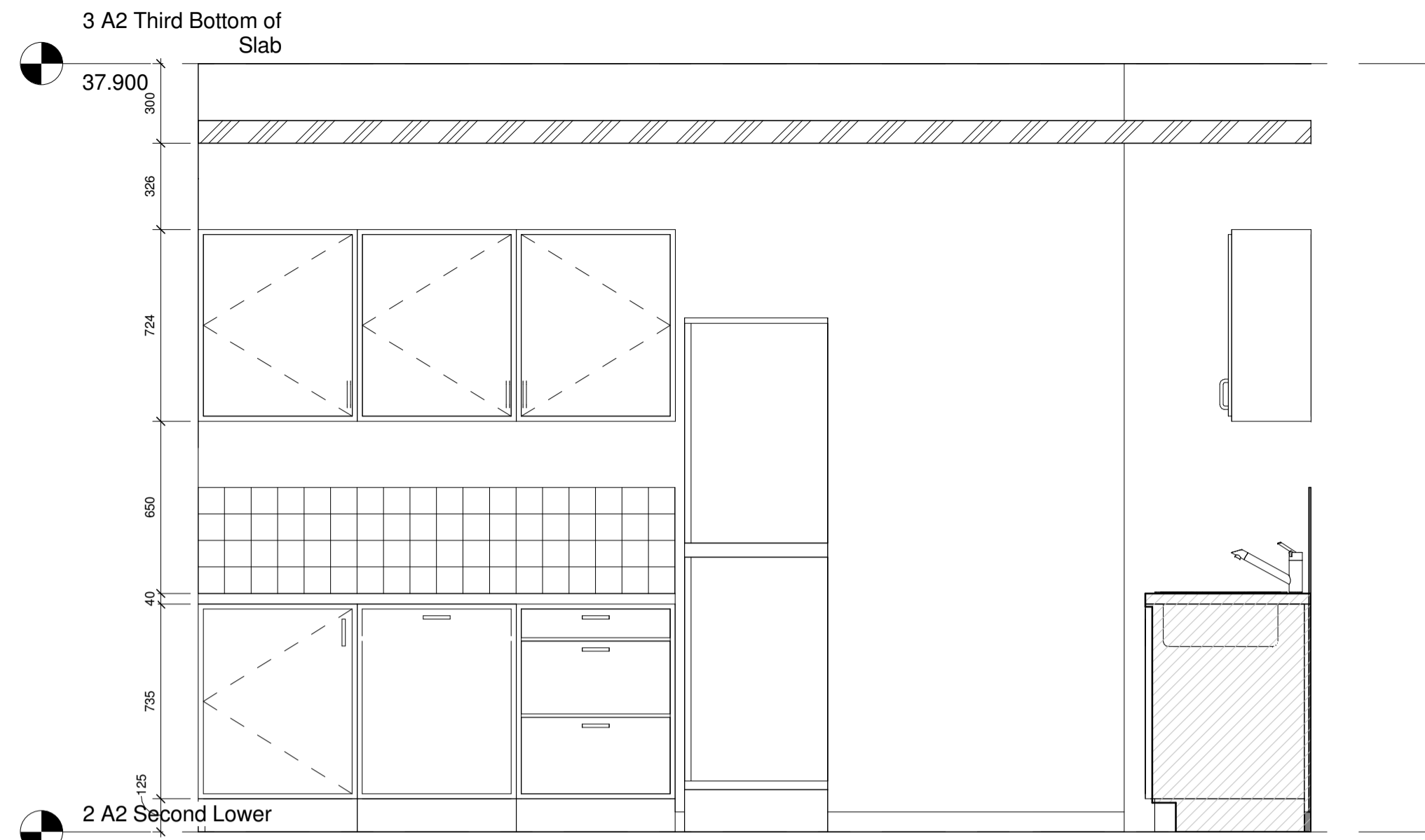
Note: Refer to Archtype NBS for specification of all Contractor supplied items

Please refer to kitchen subcontractors kitchen drawings for set-out.

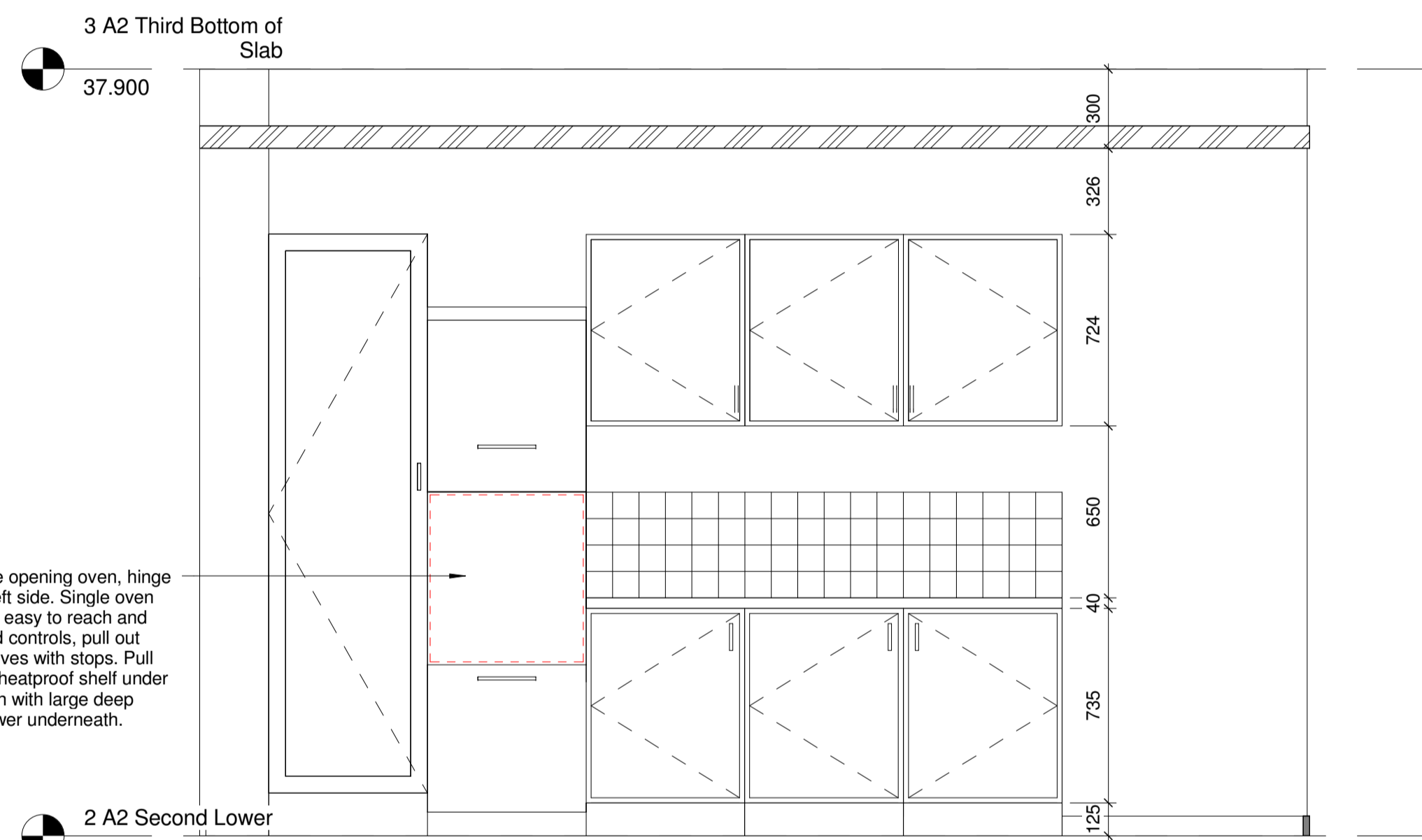


2 IE-R1K-02
1 : 20

Side opening oven, hinge to left side. Single oven with easy to reach and read controls, pull out shelves with stops. Pull out heatproof shelf under oven with large deep drawer underneath.



4 IE-R1K-03
1 : 20

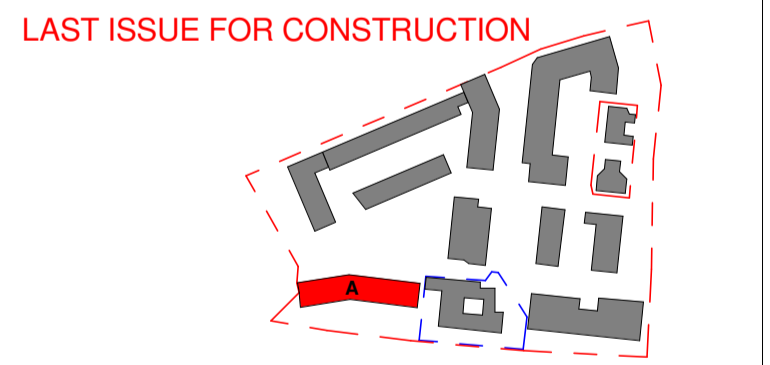


3 IE-R1K-01
1 : 20

Notes

This drawing is © Archtype Ltd.
Check this drawing is the latest revision.
Do not scale from this drawing.
Do not use the information on this drawing without checking all dimensions on site.
Do not use any areas indicated for either valuation, purchase, sale or any other form of legally binding contract.
Do not reproduce any part of this drawing without prior written consent.
Report any discrepancies on this document to Archtype.
Read this drawing in conjunction with the associated models, specifications and related consultant's documents.
Equivalent products / materials may be Approved where the Employer's Requirements, Thermal Performance, Airtightness and any other specified performance requirements are met. Subject to Archtype "Acceptance".
All materials to be certified to comply with BS 14001 or BES6001 or be able to provide a Chain of Custody certificate in order to comply Code for Sustainable Homes. All timber species and sources used in this development are not to be listed on the CITES appendices for endangered or threatened species (appendix I, II or III)

Rev	Date	Description	Drawn	Checked
10	31.01.18	LAST ISSUE FOR CONSTRUCTION	IC	RW
9	09.06.17	Update to kitchen drawings to reflect kitchen subcontractor proposal. Tiling layout adapted to suit.	MF	RW
8	06.12.16	Updates as response to Occupational Therapist comments	IC	RW
7	28.07.16	Tiling size and specification updated. Unit schedule updated	IC	EB
6	09.06.16	Adjustments to tiling to get Hacking/Brown comments	IC	EB
5	18.04.16	Issued for Construction. Kitchen layouts updated following M&E and kitchen supplier coordination.	AP	EB
4	19.10.15	Issued for Building Control	CD	EB
3	13.10.15	Updates to kitchen layout due to SWP locations	IC	CD
2	29.09.15	Kitchen layout alterations to cater for SWP locations	IC	CD
1	02.09.15	Preliminary Issue	IC	CD



Hill Partnership Ltd for Camden Council
Project: Agar Grove Block A

Drawing Title: Flat Type R1 Kitchen

Project: T14011 - ART - DR - A - 1a A 00 - DD-664

Status: A Issued for Construction

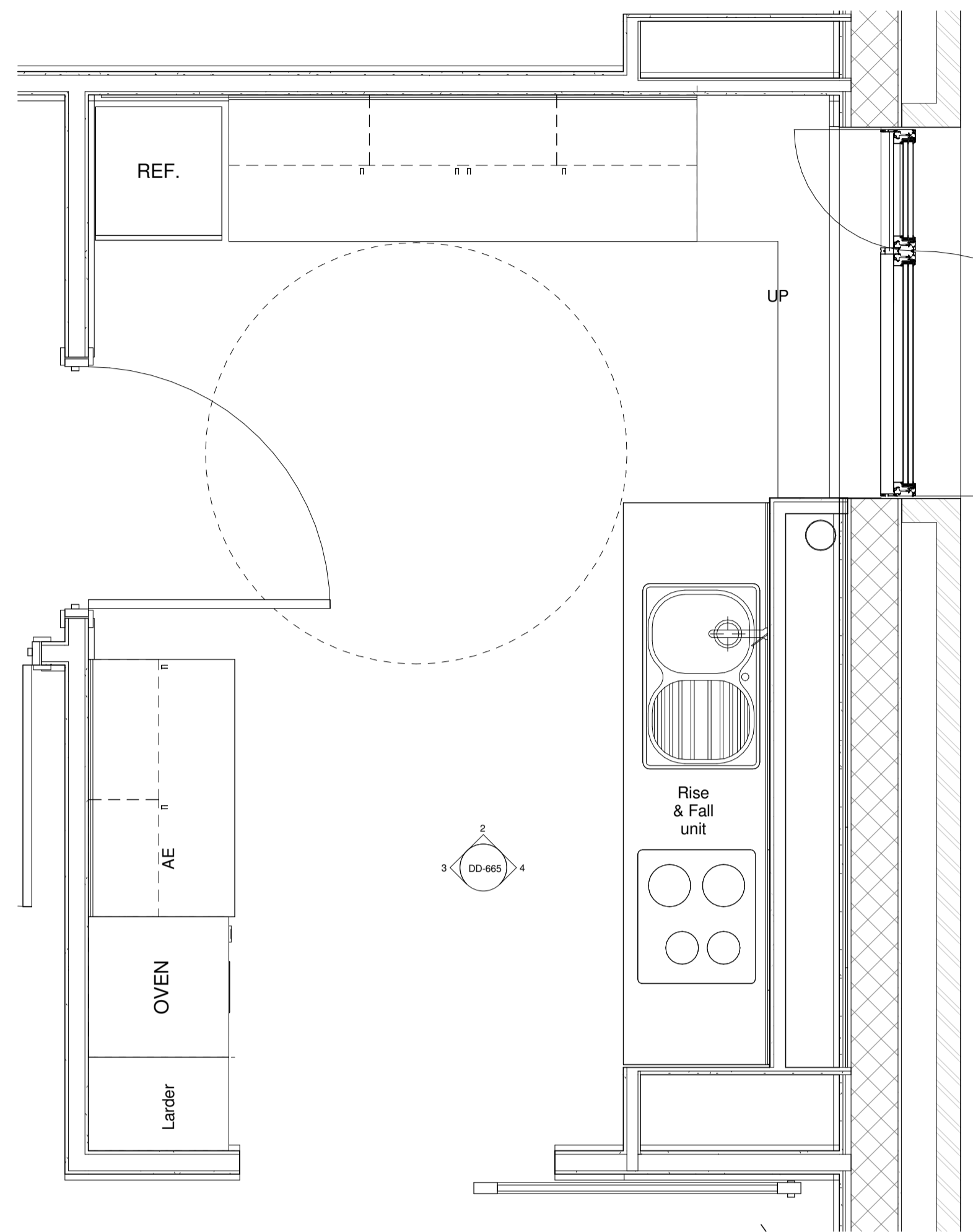
Revision: Z 10 Revision description as above

Scale: As indicated @ A1 Date: 02 Sep 15

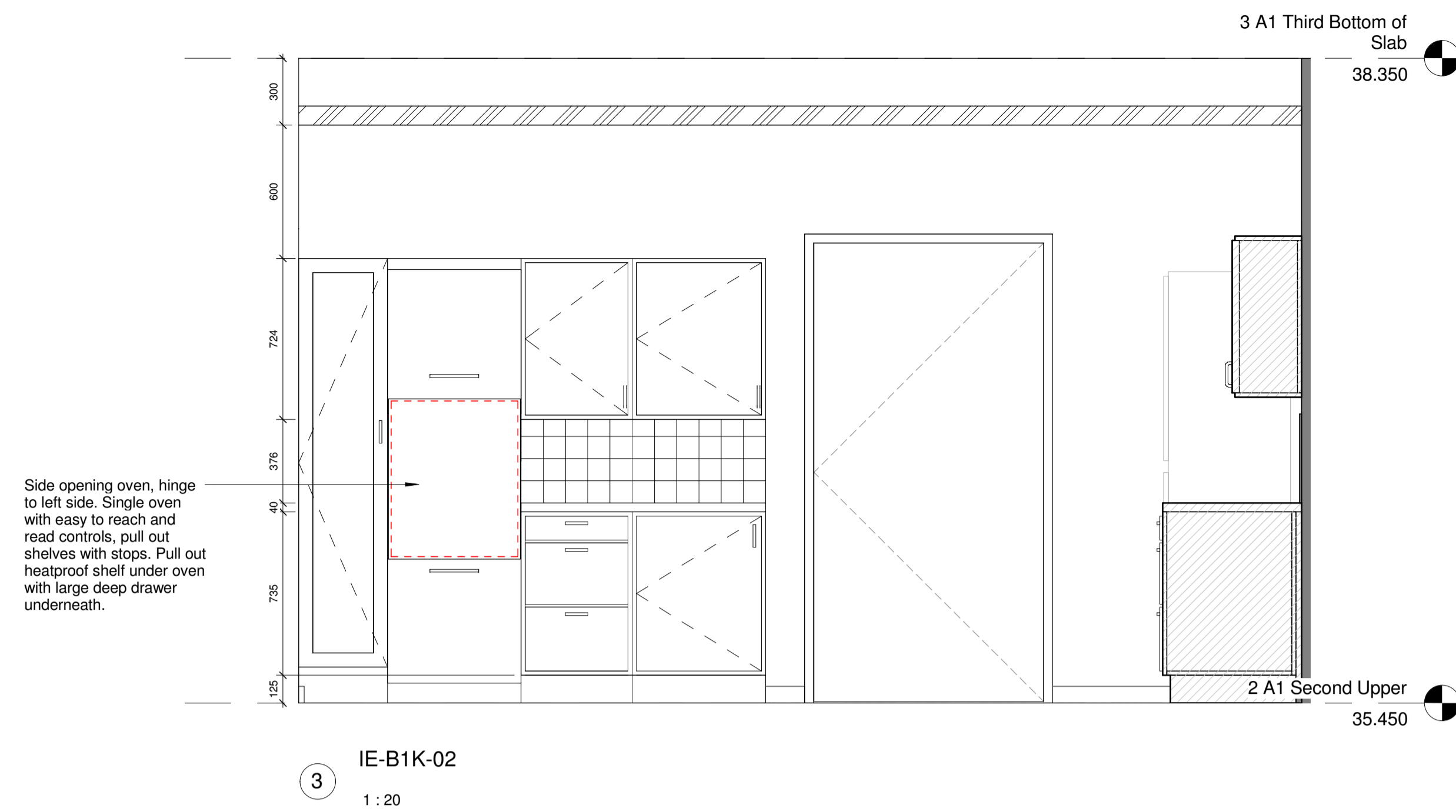
Drawn by: IC Checked by: CD

Internal Project Ref: 8090 Model Ref: AG-RAC2015-A-A

NOTE - Kitchen type occurs 1no. times in Block A

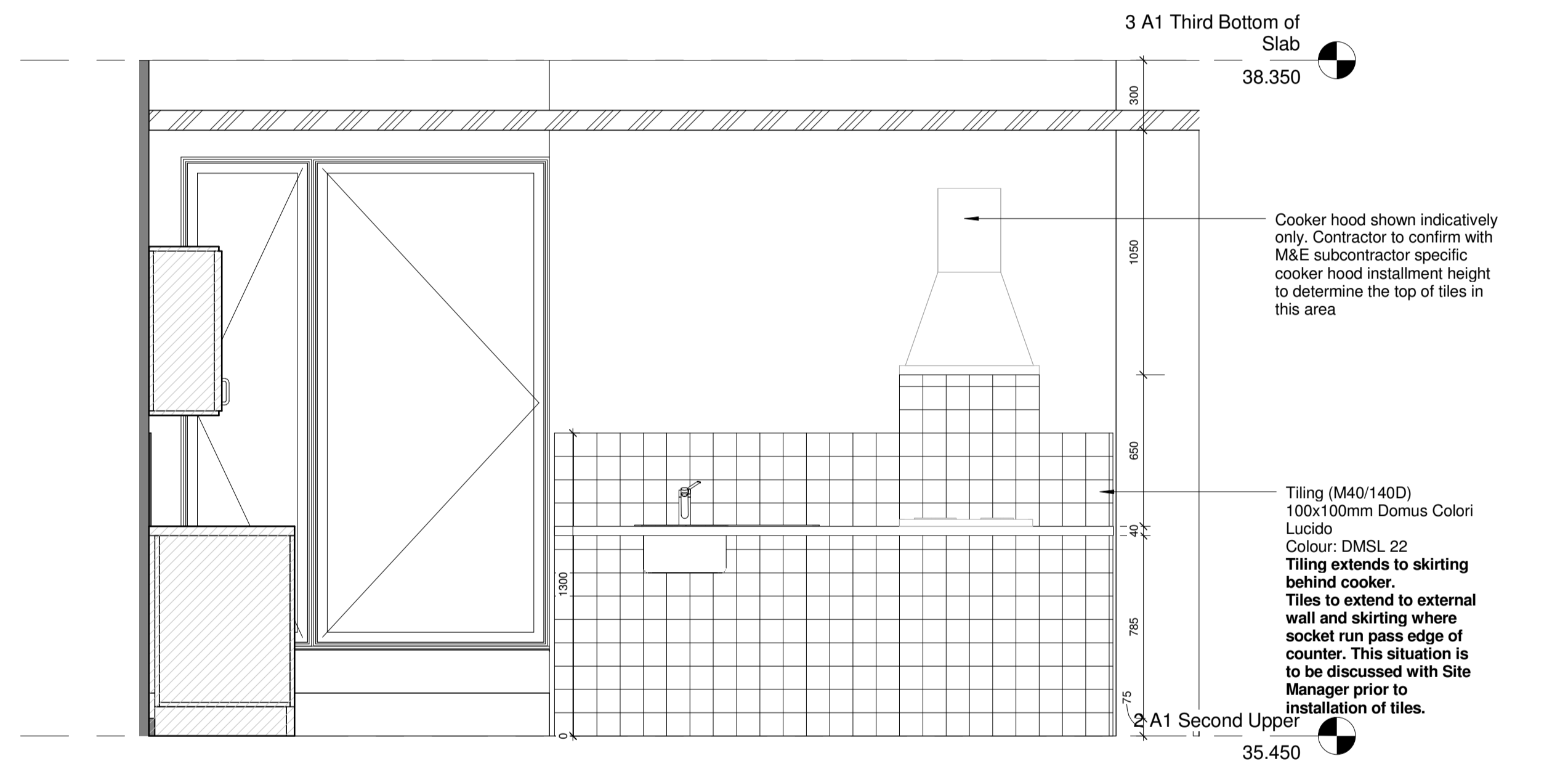


1 Flat Type B1 Kitchen Plan
1 : 20



Side opening oven, hinge to left side. Single oven with easy to reach and read controls, pull out shelves with stops. Pull out heatproof shelf under oven with large deep drawer underneath.

3 IE-B1K-02
1 : 20



Cooker hood shown indicatively only. Contractor to confirm with M&E subcontractor specific cooker hood installation height to determine the top of tiles in this area

Tiling (M40/140D) 100x100mm Domus Colori Lucido
Colour: DMSL 22
Tiling extends to skirting behind cooker.
Tiles to extend to external wall and skirting where socket run pass edge of counter. This situation is to be discussed with Site Manager prior to installation of tiles.

4 IE-B1K-03
1 : 20

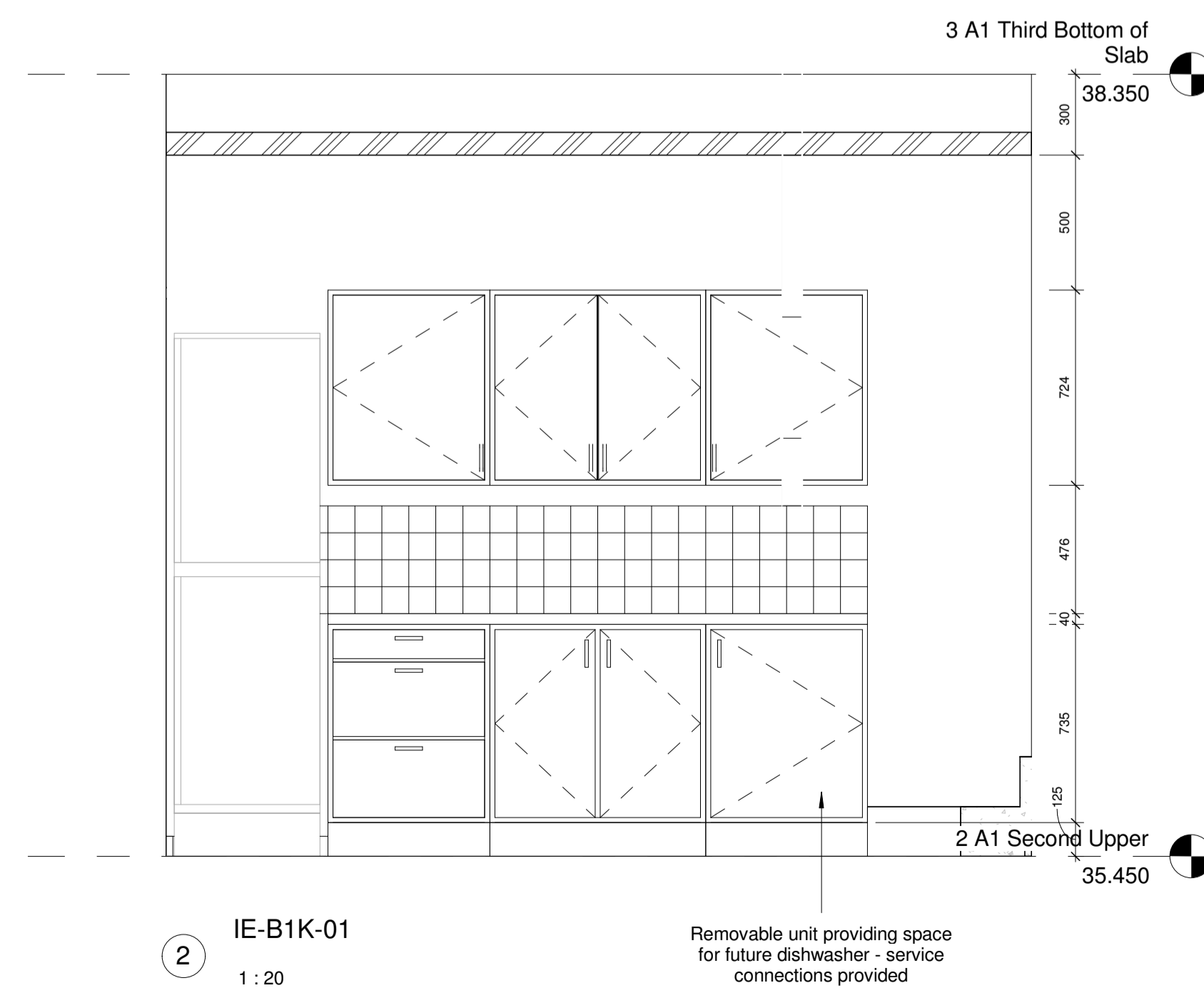
Casework Schedule IE-B1K				
Description	Mark	Width	Height	Depth
40mm Worktop	IE-B1K-WT01	900.0	625.0	
40mm Worktop	IE-B1K-WT02	900.0	625.0	
40mm Worktop	IE-B1K-WT03	900.0	625.0	
3				
400mm Larder unit	IE-B1K-LA01	400.0	2000.0	600.0
1				
500mm Base unit 3 drawers	IE-B1K-BU04	500.0	860.0	600.0
1				
500mm Wall unit	IE-B1K-WU04	500.0	724.0	300.0
1				
600mm Base unit	IE-B1K-BU03	600.0	860.0	600.0
600mm Base unit	IE-B1K-BU05	600.0	860.0	600.0
2				
600mm Base unit 3 drawers	IE-B1K-BU01	600.0	860.0	600.0
1				
600mm Tall oven unit	IE-B1K-TO01	600.0	2000.0	600.0
1				
600mm Wall unit	IE-B1K-WU01	600.0	724.0	300.0
600mm Wall unit	IE-B1K-WU03	600.0	724.0	300.0
600mm Wall unit	IE-B1K-WU05	600.0	724.0	300.0
3				
800mm Base unit, double doors	IE-B1K-BU02	800.0	860.0	600.0
1				
800mm Wall unit double doors	IE-B1K-WU02	800.0	724.0	300.0
1				
Grand total:				15

Kitchen Equipment Schedule IE-B1K		
Description	Mark	Comments
Extractor Fan	IE-B1K-EX01	Client supplies
1		
Fridge Freezer	IE-B1K-FF01	Tenant supplies
1		
Electric Hob	IE-B1K-H01	Client supplies
1		
Oven	IE-B1K-OV01	Client supplies
1		
Sink	IE-B1K-SK01	
1		
Grand total:		5

Note: Refer to Archtype NBS for specification of all Contractor supplied items

Please refer to kitchen subcontractors kitchen drawings for set-out.

NOTE - Kitchen type occurs 2no. times in Block A



Removable unit providing space for future dishwasher - service connections provided

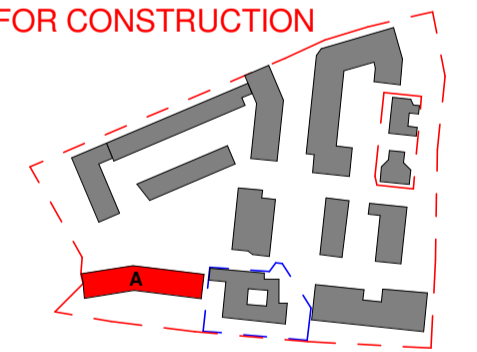
2 IE-B1K-01
1 : 20

Notes

This drawing is © Archtype Ltd.
Check this drawing is the latest revision.
Do not scale from this drawing.
Do not use the information on this drawing without checking all dimensions on site.
Do not use any areas indicated for either valuation, purchase, sale or any other form of legally binding contract.
Do not reproduce any part of this drawing without prior written consent.
Report any discrepancies on this document to Archtype.
Read this drawing in conjunction with the associated models, specifications and related consultant's documents.
Equivalent products / materials may be Approved where the Employer's Requirements, Thermal Performance, Airtightness and any other specified performance requirements are met. Subject to Archtype "Acceptance".
All materials to be certified to comply with BS 14001 or BES6001 or be able to provide a Chain of Custody certificate in order to comply Code for Sustainable Homes. All timber species and sources used in this development are not to be listed on the CITES appendices for endangered or threatened species (appendix I, II or III)

Rev	Date	Description	Drawn	Checked
8	31.01.18	LAST ISSUE FOR CONSTRUCTION	IC	RW
7	09.06.17	Update to kitchen drawings to reflect kitchen subcontractor set-out. Tiling layout adapted to suit.	MF	RW
6	06.12.16	Updates as response to Occupational Therapist comments	IC	RW
5	28.07.16	Tiling size and specification updated. Unit schedule updated	IC	EB
4	08.06.16	Adjustments to tiling as per Hawkins/Drew comments	IC	EB
3	19.04.16	Issued for Construction. Kitchen layout updated following M&E and kitchen supplier coordination.	AP	EB
2	19.10.15	Issued for Building Control	CD	EB
1	02.09.15	Preliminary Issue	IC	CD

LAST ISSUE FOR CONSTRUCTION



LONDON: 020 7403 2888 WWW.ARCHTYPE.CO.UK HEREFORD: 01961 542 111

Client: Hill Partnership Ltd for Camden Council
Project: Agar Grove Block A
Drawing Title: Flat Type B1 Kitchen

Project Originator Type Role Phase Block Unit Unique ID
T14011 - ART - DR - A - 1a A 00 - DD-665

Status: Code Suitability Description
A Issued for Construction

Revision: Code Revision Description
Z 8 Revision description as above

Scale: As indicated @ A1 Date: 02 Sep 15

Drawn by: IC Checked by: CD

Internal Project Ref: 8090 Model Ref: AG-RAC2015-A-A